

# Safari

CHEETAH 09

Live out loud.™





BALI NIGHT INTERIOR WITH NEWPORT CHERRY, 42PAQ





WE'VE BEEN EXPECTING YOU.

At Safari, we know you. You're notorious for your independent streak. Always looking for the real deal. Sampling the local specialties. Going hours out of your way to see things others miss. You want a coach that's adventure by day and contentment by night. The marriage of luxury and adrenaline.



The 2009 Cheetah.



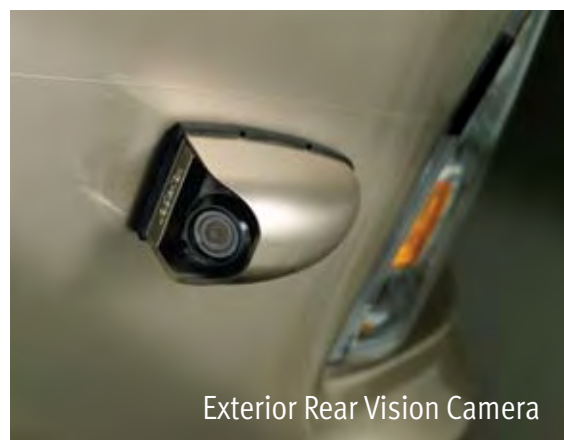


42PAQ, BALI NIGHT INTERIOR WITH NEWPORT CHERRY

### THIS'LL REV YOUR ENGINE.

The 2009 Cheetah sports an all-new dash with a sophisticated Roman bronze instrumentation panel. It's equipped for the latest bells and whistles with an in-dash driver's message center, optional satellite radio, iPod controls and optional GPS. Adjustable brake and accelerator pedals increase safety and reduce driving fatigue, while solar sunscreens block out annoying glare. And, you'll enjoy it all from the plush comfort of Ultraleather™ cockpit seats.





Exterior Rear Vision Camera

Make a bold statement with the Cheetah's all-new graphics in deluxe, full-body paint. The coach features a sleek new front cap with newly styled headlights and fog lights. Wherever you go, the view is better through the enormous, wraparound Panaview™ 1-piece windshield with no obstructing seam. Shown at left is a side camera for the optional 3-camera rear vision system.









## HAVE A LOOK AROUND.

Style and convenience come together throughout the Cheetah's living area. You'll enjoy beautiful hardwood cabinetry, polished solid surface countertops with radiused edges, an exquisite dining area with freestanding chairs, and top appliances, including an optional central vacuum system. The bedroom features a stunning new hardwood and fabric headboard, and in the bath you'll enjoy a large, round one-piece shower (neo-angled on 40SKQ).



Newport Cherry



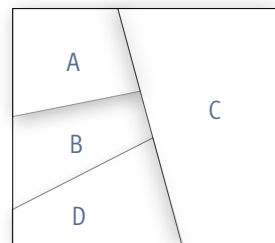
Champagne Select



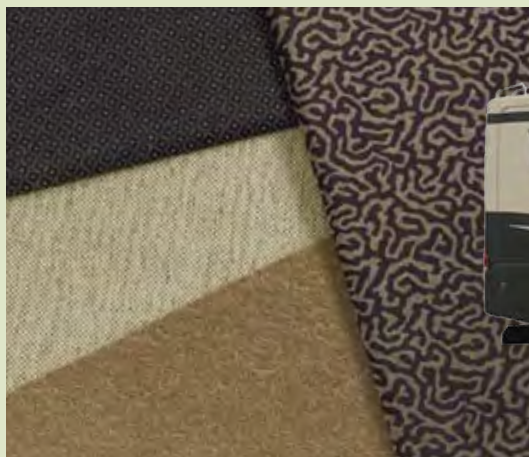


## COLORFUL CHARACTERS.

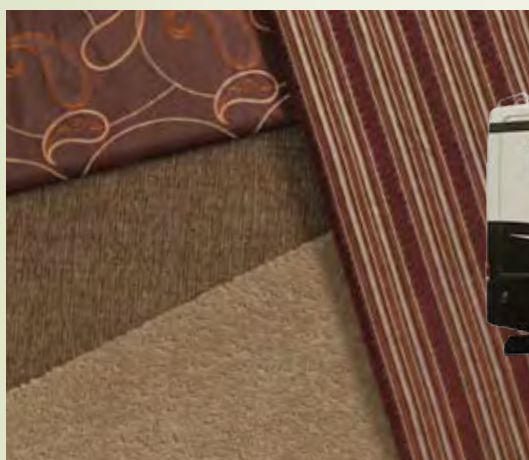
For 2009, the Cheetah continues to be one of the road's most distinctive motorcoaches. You'll choose from three striking color schemes with exquisite fabric combinations and stunning cabinetry styles. They're just like you — filled with warmth, personality and just a hint of rebellion.



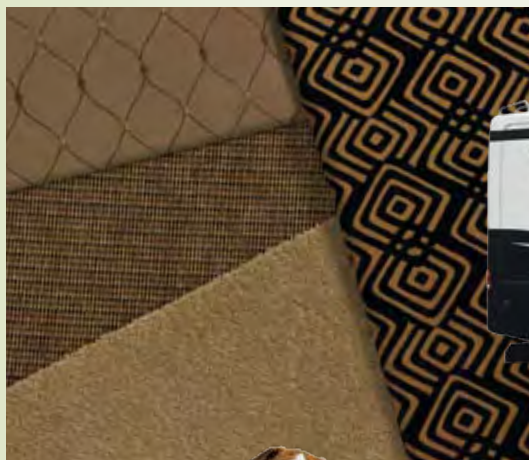
- A. BEDSPRING
- B. SOFA
- C. DINETTE
- D. CARPET



DRIFTSCAPE



SANGRIA



BALI NIGHT

BETTER  
STAIN  
PROTECTION



## FOR LOOKS THAT LAST.

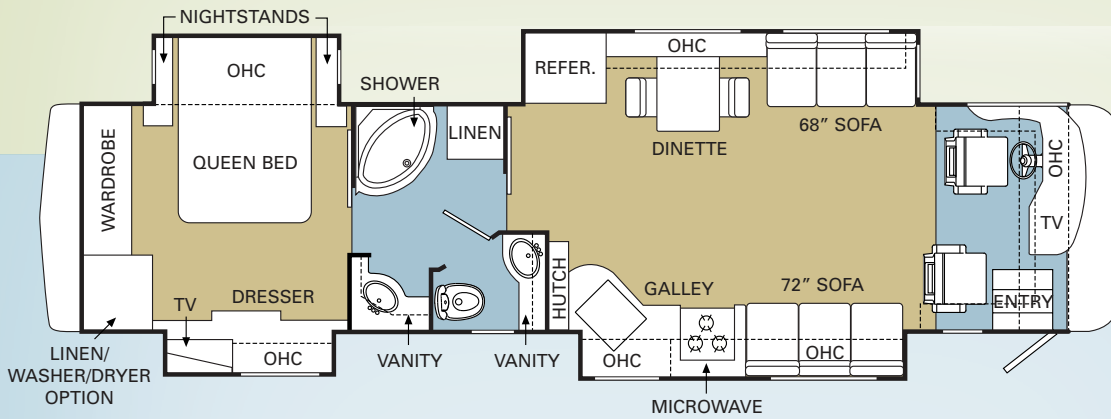
Every Safari coach features upholstery fabric with soil repellent that's not just added on, but applied during the manufacturing process, for superior coverage.\*

\*Brand and application of upholstery fabric protection may vary depending on date recreational vehicle was manufactured.

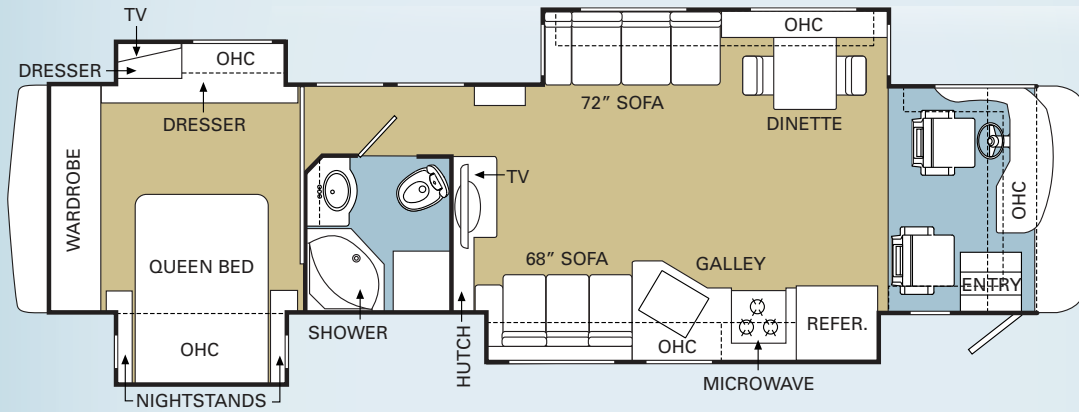


CARPET TILE

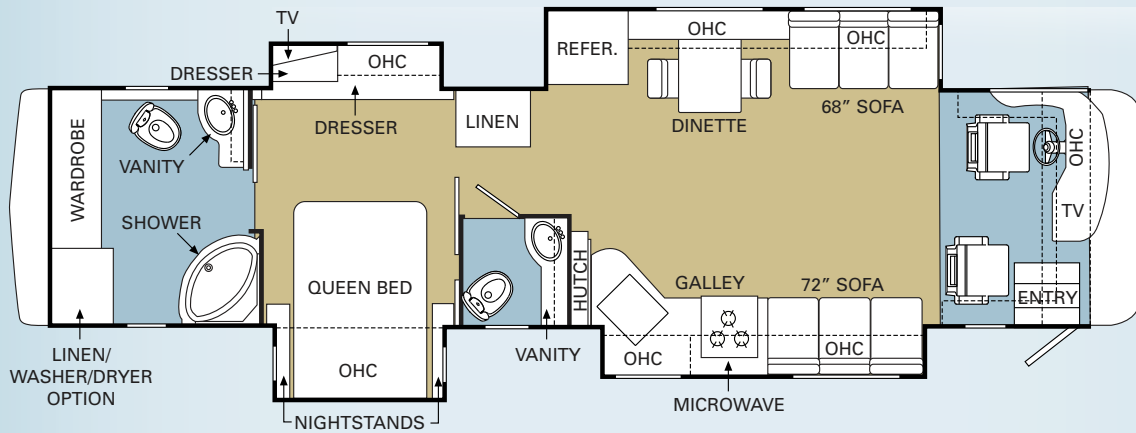
40PBQ



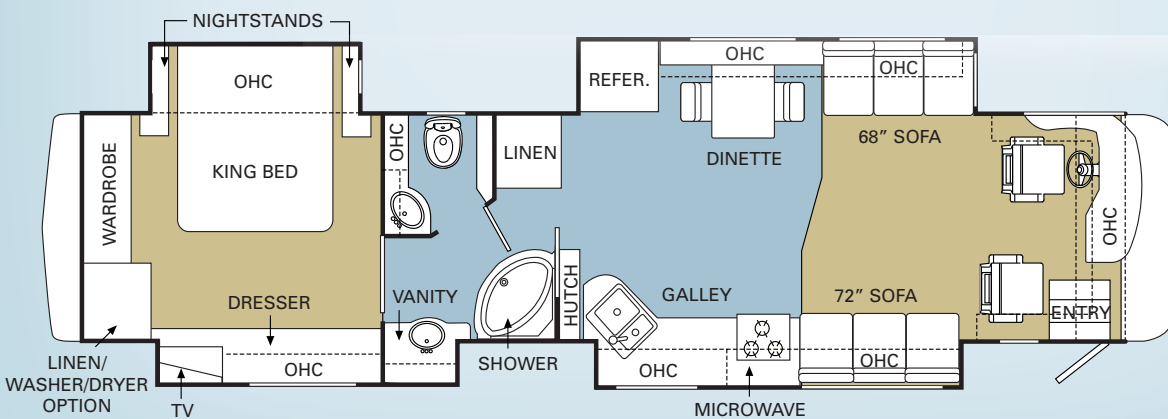
40SKQ



42PAQ



42PBQ

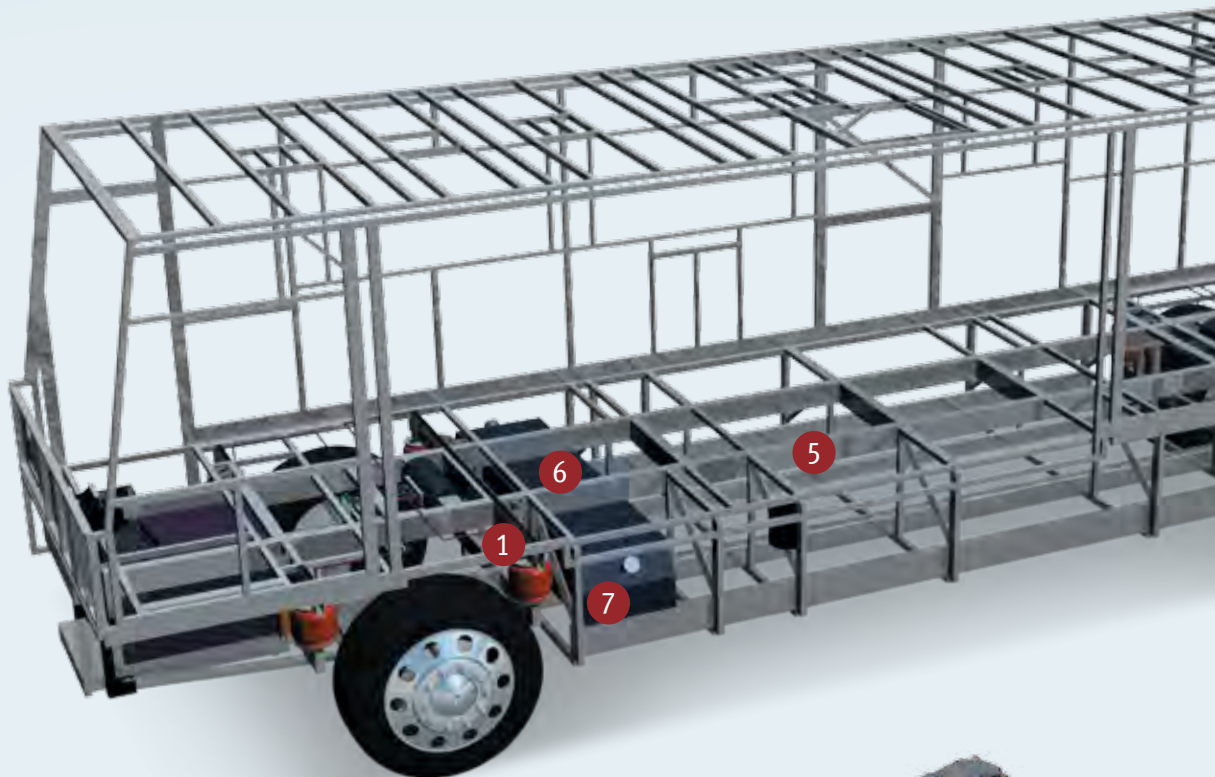




# THE HEART OF A CHEETAH.

## ROADMASTER R-SERIES CHASSIS

The 2009 Cheetah offers the best-in-class performance of the Roadmaster R-Series Chassis. Roadmaster is the only chassis manufacturer with a 100 percent commitment to producing only chassis for luxury motorhomes. In fact, every Roadmaster chassis is custom built for the exact model and floorplan to give you a smoother ride, superior front-to-rear balance and unbeatable strength and reliability. We encourage you to take a few minutes to learn more about the many features that put Roadmaster in a class by itself.



1. **The Cushion Air Glide suspension** features 8 outboard-mounted gas-charged shocks and air bags.
2. **The Power of Caterpillar** is at the wheel of the 2009 Cheetah. You'll have the muscle of a Caterpillar® C7 350 HP engine — or, on the 42-foot model, the remarkable C9 400 HP. Both are compliant with 2007 EPA standards and feature ACERT™ technology for reduced emissions, powerful performance and outstanding fuel economy.
3. **Allison® 3000 MH 6-Speed World Transmission** with electronic shifter. Our exclusive use of synthetic transmission fluid allows for up to three-year maintenance intervals for the Allison® transmission.
4. **Automatic Traction Control (ATC)** eliminates wheel slippage in slick conditions and heightens control. The **Anti-Lock Braking System (ABS)**, with front disc brakes and rear drum brakes, gives you superior stopping power, especially on steep grades. Together, these sophisticated systems offer the very best safety on the road.
5. Our exclusive **raised rail design** provides for larger full pass-through storage bays with flush floors.
6. **Aluminum Fuel Tank** is lightweight and resists corrosion, unlike steel tanks.
7. **Dual Fuel Fill** allows you to fill the tank from either side of the coach for greater convenience and flexibility at the pump.
8. A **10,000 lb. tow hitch** rating is the highest in its class. Prewired for supplemental braking system that works with your tow vehicle.





The Cheetah's 40-foot models (40PBQ and 40SKQ) ride on the Roadmaster RR8R-Series chassis with eight outboard-mounted air bags, which provide a wider, more stable platform for the coach.



### RR10R Series TAG AXLE

The 42PAQ & 42PBQ models feature 10 air bags and a tag axle with anti-lock brakes. It's all part of Safari's commitment to overall performance and, most importantly, your safety.



Our pass-through storage with this optional slide-out tray makes it easy to quickly retrieve larger items.

### 9-Layer Roof (top to bottom)

- Seamless one-piece crowned smooth gel coat fiberglass roof enhances water runoff
- Luaun backing increases rigidity
- 2-1/2" tapered bead foam insulation
- 1-1/2" x 3" aluminum I-beam superstructure on 16" centers filled with 3" fiberglass insulation
- Vapor barrier
- Structure foam provides added thermal barrier
- 1/2" bead foam insulation
- Foam padding for extra insulation
- Easy-to-clean padded vinyl ceiling



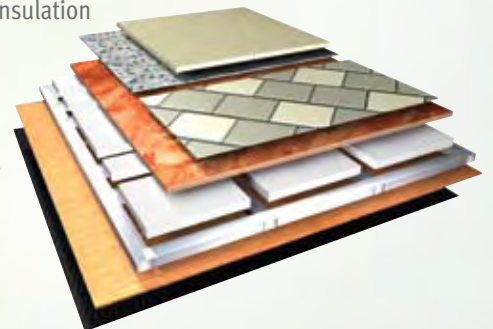
### 5-Layer Exterior Wall (left to right)

- Wallpaper
- 1/8" luaun
- 1-1/2" x 1-1/2" square tubular and welded aluminum frame
- High-performance thermal insulation
- High-gloss gel coat fiberglass exterior



### 6-Layer Floor (top to bottom)

- Carpet pad and carpeting or tile
- Structurwood™ for added stability
- High-performance thermal insulation
- 1-1/2" x 1-1/2" square tubular frame
- 1/8" luaun
- Waterproof Darco underbelly provides moisture barrier





## BODY CONSTRUCTION

- Aluminum Superstructure
- Laminated Smooth Gel Coat Fiberglass Exterior Walls
- Seamless One-Piece Molded Crowned Fiberglass Roof
- All-Season Foam Insulated Roof
- Panaview™ 1-Piece Front Windshield
- Interior Height 84"
- Front and Rear Molded Fiberglass Cap
- One-Piece Generator Access Door
- Fiberglass Engine Cover
- Aluminum Framed Floor on Steel Trusses
- Structurwood™ Flooring
- Electric Flush-Floor Stepwell Cover
- Interior Paneling with 3/4" Insulation
- Foam Insulated Floor Framing with 3-Ply Underbelly
- 17.5" Chrome Head Power-Heated Remote Mirrors
- Side-Hinged Baggage Doors
- Full-Length Mud Flap
- 3M Film Front Mask
- Deluxe Full-Body Paint
- Roof Ladder
- Undercoating
- Slide-Out Battery Tray (42 PAQ, 42PBQ)

## OPTIONS

- Storage Bay Slide-Out Tray — Pass-Through
- Slide-Out Battery Tray (Standard on 42PAQ, 42PBQ)

## CHASSIS/ENGINE/SUSPENSION

- Roadmaster Raised Rail Chassis RR8R (N/A: 42PAQ, 42PBQ)
- Caterpillar® C7 350 Electronic Engine with Allison® 3000 MH 6-Speed World Transmission and Electronic Shifter (N/A: 42PAQ, 42PBQ)
- Engine Displacement: 7.2L / 441 cu. in. (N/A: 42PAQ, 42PBQ)
- Torque: 860 lbs./ft. Max. Net at 1,600 RPM (N/A: 42PAQ, 42PBQ)
- Roadmaster Raised Rail Chassis RR10R (42PAQ, 42PBQ)
- Caterpillar® C-9 400 Engine & Allison® 3000 MH 6-Speed Transmission with Electronic Shifter (42PAQ, 42PBQ)
- Torque: 1250 lbs./ft. Max. Net @ 1,400 RPM (42PAQ, 42PBQ)
- Engine Displacement: 9.3L / 567 cu. in. (42PAQ, 42PBQ)
- Aluminum Rear-Mounted Radiator with CAC Cooler
- Chrome Exhaust Tip - Engine
- Dual Fuel Fill
- 160 Amp Alternator
- Rear Axle Ratio: 4.30:1
- Goodyear Radial Tires: 275/70R/22.5
- Polished Aluminum Wheels
- 8 Gas Shocks and 8 Outboard-Mounted Air Bags (N/A: 42PAQ, 42PBQ)
- 10 Gas Shocks and 10 Outboard-Mounted Air Bags (42PAQ, 42PBQ)
- Anti-Lock Braking System with Full Air Brakes (N/A: 42PAQ, 42PBQ)
- Tag Axle with Anti-Lock Braking System (42PAQ, 42PBQ)
- Prewire for Supplemental Braking System
- Automatic Traction Control
- Exhaust Braking System (N/A: 42PAQ, 42PBQ)
- Caterpillar® Variable Geometry Turbo Exhaust Brake (42PAQ, 42PBQ)
- Auto Slack Adjusters on Brakes
- Transmission Temperature Gauge
- Air Cleaner Restriction Indicator
- Fuel and Water Separator
- Remote Transmission Fill
- Engine Block Heater
- Automatic Hydraulic Leveling System
- 10,000 Lb. Hitch Receiver with Dual Connector 4-Pin or 7-Pin

## COCKPIT

- Automotive Dash with Roman Bronze Instrumentation Panel
- Ultraleather™ Pilot and Co-Pilot Seats
- In-Dash AM/FM/CD Stereo with Sirius-Ready Compatibility, iPod Control, Aux in Connection, SD Card Slot, and Weather Band
- Dash 12V Chassis Battery Gauge
- CB Prep
- Rear Vision System with Audio and Adjustable Camera
- Adjustable Brake and Accelerator Pedals
- Audible Turn Signals
- Roof-Mounted Dual Trumpet Air Horns
- Carpeted Pilot and Co-Pilot Floor Mats
- In-Dash Driver's Message Center
- Power Sunvisors

## OPTIONS

- Auxiliary Blower
- 10-Disc CD Changer
- Sirius Satellite Radio System (Requires Subscription)
- 3-Camera Rear Vision System with Audio and Adjustable Center Camera
- GPS System
- Pilot and Co-Pilot Pulldown Sunshades
- Interior Solar Privacy Sunscreens

## APPLIANCES AND ACCESSORIES

- Large Four-Door Refrigerator with Ice Maker
- High-Output 3-Sealed Burner Cooktop without Oven
- Removable Solid Surface Range Covers
- Spacesaver Convection Microwave
- Home Theater System
- 37" Flatscreen LCD TV in Living Area Hutch (40SKQ)
- 32" Flatscreen LCD TV in Front Cockpit Overhead (N/A: 40SKQ)
- 20" LCD TV in Bedroom
- Exterior Hook-Ups for DSS Dish and Cable
- Washer/Dryer Prep
- Digital Satellite System Prep

## OPTIONS

- High-Output 3-Sealed-Burner Range with Oven
- Bedroom DVD Player with IR repeater
- 26" LCD Bedroom TV
- Combination Washer/Dryer
- 14 Cu. Ft. 2-Way Refrigerator with Water and Ice Dispenser in the Door
- Stainless Steel Package (Includes Stainless Steel Refrigerator and Microwave)
- Central Vacuum
- R5 KVH In-Motion Satellite (Does Not Include Receivers)
- Fireplace with Hardwood Frame (40SKQ)
- Exterior Entertainment Center (26" LCD/AM/FM/CD Radio with Two Speakers)



## INTERIOR

- Hardwood Cabinetry
- Heavy-Duty Ball Bearing Drawer Guides
- Wood Cabinet Drawer Boxes
- Refrigerator with Hardwood Inserts
- Satin Nickel Cabinetry Hardware and Bath Accessories
- Polished Radius Solid Surface Kitchen Countertop with Stainless Steel Sink with Two Sink Covers
- Kitchen Backsplash: Corian® with Decorative Tile Inlay Accent
- Corian® Solid Surface Countertops Throughout
- Laminate with Corian® Edge Countertops in Bedroom
- Ceramic Tile Kitchen, Entry and Bath
- Designer Carpeting in Living Area and Bedroom
- Soft Touch Padded Vinyl Ceiling
- Queen Bed with Wraparound Nightstands
- Day/Night Pleated Blackout Shades in Living Area and Bedroom
- Mini Blinds Kitchen and Bath
- Soil Repellent on Fabric

## OPTIONS

- Decors: Bali Night, Sangria, Driftscape
- Full-Tile Living Room
- Hardwood Choice: Newport Cherry and Champagne Select

## FURNITURE

- Queen Bed with Overhead Cabinet and Nightstands (N/A: 42PBQ)
- King Bed (42PBQ)
- Freestanding Dinette with Full-Length Wall Cabinet and Two Freestanding Chairs with Two Folding Chairs
- Roadside Furniture: Fabric Easy Bed Sofa
- Curbside Furniture: Fabric Easy Bed Sofa

## OPTIONS

- Roadside Furniture: Fabric Hide-A-Bed with Air Mattress
- Roadside Furniture: Ultraleather™ Easy Bed Sofa
- Roadside Furniture: Ultraleather™ Hide-A-Bed with Air Mattress
- Roadside Furniture: Ultraleather™ Booth Dinette Ensemble
- Curbside Furniture: Fabric Hide-A-Bed with Air Mattress (N/A: 40SKQ)

- Curbside Furniture: Ultraleather™ Hide-A-Bed with Air Mattress (N/A: 40SKQ)
- Curbside Furniture: Ultraleather™ Easy Bed Sofa
- Roadside: Wraparound Computer Desk with Ultraleather™ Euro-Recliner (N/A: 40SKQ)
- Queen Select Comfort Air Mattress
- King Bed Select Comfort Air Mattress (40PBQ, 42PBQ)
- King Bed with One Nightstand (40PBQ)

## ELECTRICAL SYSTEMS AND LIGHTS

- 50 Amp 120V Distribution Panel and Power Cord
- Battery Maintainer
- Energy Management System
- Onan® 8.0 kW Quiet Diesel Generator with Auxiliary Start Switch (N/A: 42PAQ, 42PBQ)
- Onan® 10 kW Quiet Diesel Generator with Auxiliary Start Switch (42PAQ, 42PBQ)
- Four 6V Deep Cycle House Batteries
- Two 12V Heavy-Duty Chassis Batteries
- Battery Disconnect Switch at Front Door
- Battery Boost Switch in Cockpit
- 2000 Watt Inverter
- Exterior Power Double Entry Step, with Lights
- Water Pump Switches in Service Bay, Bath, Private Bath and Galley
- Convenience Center in Hallway

## OPTIONS

- 50-Amp Electric Power Cord Reel
- Solar Panel

WHEREVER YOU ARE,  
WE'RE THERE.



Safari is always just a click away at [www.safarimotorcoaches.com](http://www.safarimotorcoaches.com). Here you'll find dealer links, service center locations, owner news and all the latest information about your Cheetah. It's your direct link to all things Safari — and a great way to keep in touch.

[www.safarimotorcoaches.com](http://www.safarimotorcoaches.com)





## PLUMBING AND LP SYSTEMS

- Kitchen Under-Mounted Stainless Steel Sink with Single Lever Satin Nickel Faucet with Pullout Sprayer
- Central Water Filtration System
- Demand Water System and Water Pump
- Winterization Valving System
- Water Heater Bypass Valving
- China Toilet with Sprayer
- Thetford China Toilet Electronic Silent Plus (42PAQ)
- No-Fuss Flush Holding Tank Rinsing System
- Insulated Systems Compartment with Easy Access to Hook-Up
- Shower inside Wet Bay with Hot/Cold Water
- Gravity and Pressurized Water Fill
- Contained Storage Area for Sewer Hose
- One-Piece Round Shower with Reeded Glass Door (N/A: 40SKQ)
- One-Piece Neo-Angled Shower with Obscured Glass Door (40SKQ)

## OPTIONS

- RV Sani-Con Holding Tank Rinsing System
- Water Hose Reel
- Exterior Tank Monitor Gauge in Wet Bay
- Neo-Angled Tub (N/A: 42PAQ)

## HEATING, VENTS AND AIR CONDITIONING

- Dual 13.5M BTU Roof Air Conditioner with Ducted Air, Heat Pumps, and Digital Thermostat Control (N/A: 42PAQ, 42PBQ)
- Three 13.5M BTU Roof Air Conditioners with Wall Thermostat and Heat Pump (42PAQ, 42PBQ)
- Dual Zone Electronic Ignition Furnaces (One 31M BTU and One 21M BTU)
- In-Floor Ducted Heating System
- Kitchen and Bath Powered Attic Fan with Wall Control of Automatic Dome and Fan Power
- 12V Heater in Wet Bay

## OPTIONS

- Ceiling Fan in Bedroom
- Dual 15M BTU Roof Air Conditioner with Ducted Air, Heat Pumps, and Digital Thermostat Control (N/A: 42PAQ, 42PBQ)
- Two 15M BTU Roof Air Conditioners & One 13.5M BTU Roof Air Conditioner with Wall Thermostats and Heat Pumps (42PAQ, 42PBQ)

## WINDOWS, DOORS AND AWNINGS

- Radius Flush-Mounted Dual Pane Safety Glass Dark Tinted Slider Windows
- Front Entry Door with Clear Glass, Removable Screen, and Anti-Skid Steps
- Automatic Front Door Awning
- Eclipse Automatic Patio Awning
- Roadside Slide-Out Living Room Window Awning with Metal Cover
- Topper Slide-Out Awnings Living Area and Bedroom Slide-Outs with Metal Covers
- Tinted Skylight in Bathroom with Protecta Glaze

## OPTIONS

- Bedroom Window Awning
- Keyless Entry

## SAFETY

- Backup Alarm
- Fire Extinguisher
- Deadbolt Lock on Entrance Door
- 120V GFI Protected Circuit Kitchen, Bath and Exterior
- LP Gas Detector
- Smoke Detector
- Carbon Monoxide Detector
- Driver and Passenger Three-Point Seatbelts
- Third Brake Safety Light
- Egress Windows

Due to continuous product improvement, please see the website for the latest in standards and options, specifications, and technical data. Go to [www.safarimotorcoaches.com](http://www.safarimotorcoaches.com).

Roadworthy.

	40PBQ	40SKQ	42PAQ	42PBQ
<b>Weights * (Lbs.)</b>				
Gross Vehicle Weight Rating	33,000	33,000	43,000	43,000
Gross Combined Weight Rating	43,000	43,000	53,000	53,000
Front Gross Axle Weight Rating	13,000	13,000	13,000	13,000
Rear Gross Axle Weight Rating	20,000	20,000	20,000	20,000
Tag Axle Weight Rating (Lbs.)	N/A	N/A	10,000	10,000
<b>Measurements</b>				
Wheelbase	261"	261"	261"	261"
Overall Length	40' 8"	40' 8"	42' 8"	42' 8"
Overall Exterior Height (12' 9.5" to top of Satellite)	12' 8"	12' 8"	12' 8"	12' 8"
Interior Height	7'	7'	7'	7'
Interior Width	94.5"	94.5"	94.5"	94.5"
Exterior Width	100.5"	100.5"	100.5"	100.5"
<b>Tank Capacities ** (Gal.)</b>				
Water Heater	10	10	10	10
Gray Tank	62	62	62	62
Black Tank	42	42	42	42
Fresh Tank	100	100	100	100
LP Tank ***	39	39	39	39
Fuel Tank	100	100	100	100

\* Towing capacity is limited by GCWR; your vehicle's towing capacity is the difference between the GCWR and the actual vehicle weight, including all water, fuel, passengers and cargo. Your towed vehicle should be equipped with auxiliary brakes if the weight of the towed vehicle exceeds 1,000 lbs. Consult your owner's manual for further towing information.

\*\* All tank capacities are estimated based upon calculations provided by the tank manufacturers and represent approximate capacities. The actual "usable capacity" may be greater or less than the estimated capacities based upon fabrication and installation of the tanks.

\*\*\* Actual filled LP capacity is 80% of listing due to safety shut-off required on tank.

The actual overall length of the recreational vehicle may differ from that indicated in the brochure due to variances in the manufacturing process and/or installed components. The actual length may be greater or less than that indicated. Due to the large variety of options and floorplan arrangements available to our customers, actual weights for each unit can differ significantly. Safari provides a weight sticker on each unit we produce which includes that unit's tank capacities and approximate weight. Consult your local Safari dealer for unit availability and further information. The information printed in this brochure reflects product design, fabrication, and component parts at the date of printing. The manufacturer reserves the right, at any time, to make changes in product design or material or component specifications as its sole option, without notice. This includes the substitution of components of a different brand or trade name which will result in comparable performance. All information printed in this brochure is subject to change after the date of printing. Some features shown or mentioned in this brochure are optional and may only be available in selected floorplans. Photographs may show props or decorations that are not standard equipment on Safari models. Safari, the Safari logo and its design, are registered trademarks. All other products and company names are trademarks and/or registered trademarks of their respective holders. While the color of the motorhome's exterior and the interior fabrics depicted in this sales brochure are fair and reasonable depictions, the colors depicted may not be an exact match of the actual colors because of the variances in photo-processing and variances caused by inserting the photographs within the sales brochure. Due to product improvements, changes during the model year and/or transcription errors that may occur, information represented within this brochure may not be accurate at the time of your purchase. If certain information is significant to your purchasing decision, please confirm the information with your dealer prior to submitting your order. Component part and appliance manufacturers issue limited warranties covering those portions of the recreational vehicle not covered by the Limited Warranties issued by Monaco Coach Corporation. To learn which specific component parts and appliances are excluded from the Limited Warranties issued by Monaco Coach Corporation, please contact your selling dealership or Monaco Coach Corporation directly, or review the warranty packet inside the recreational vehicle.



WE'RE HERE. ANYTIME, EVERY TIME.

- Reach us anytime — literally — via our live customer support line.
- Drive in to one of our 350 Service Centers.
- Enjoy the first year free when you enroll in our Owner Advantage Roadside Assistance Program.
- See where it all begins with a tour of one of our facilities in Indiana or Oregon.  
Call 1-800-650-7337 or 1-800-634-0855 to find out more.



**EMERGENCY ASSISTANCE**  
SALES • TECH • ROADSIDE



# Safari

CHEETAH 09



## BEING DIFFERENT MAKES ALL THE DIFFERENCE.

Take a closer look, and you'll discover that Safari, a brand of Monaco Coach Corporation, gives you more industry "bests" than any other RV manufacturer. Like the incomparable ride and handling of the Roadmaster Chassis. The convenience of our 3,500 service centers. The peace of mind of 24/7 roadside assistance. The value of Monaco Financial Services. And the online support of [safariMotorcoaches.com](http://safariMotorcoaches.com). At Safari, we've built our reputation by listening to you — and answering to you. And that's the difference that's made us the best. Find out more by visiting [www.monacodifferent.com](http://www.monacodifferent.com).

## WARRANTIES

12 MONTH/24,000 MILE basic limited warranty

5 YEAR/50,000 MILE limited warranty on aluminum or steel frame structure of sidewall, roof, front and rear cap

3 YEAR/50,000 MILE limited warranty on Roadmaster chassis

Applies to certain models. See owner's manual for complete details.

CHEETAH



SIMBA® RD



COMPRESSION  
GAS & DIESEL TOYHAULER



SIMBA® GAS



TREK®



PASSAGE™



IVORY®



DAMARA®

