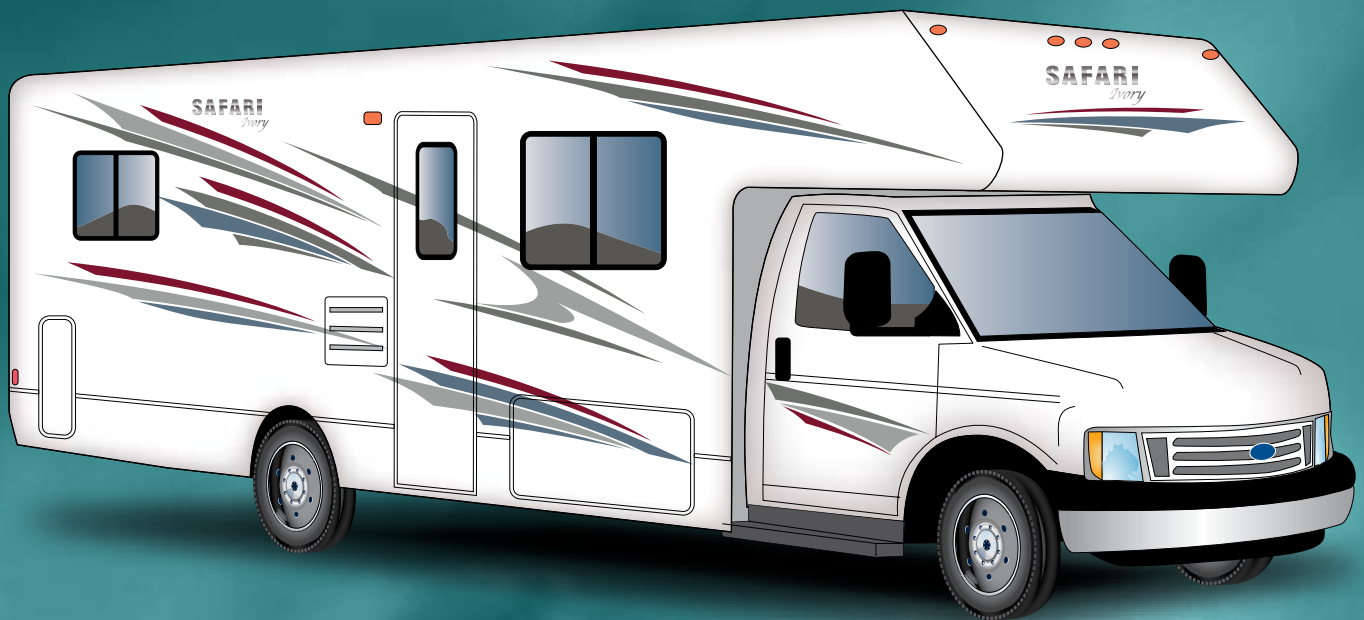
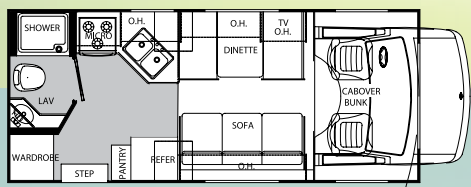


Safari

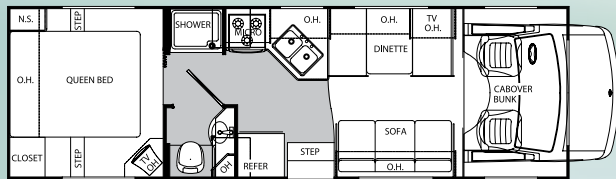
Ivory 09

Live out loud.™

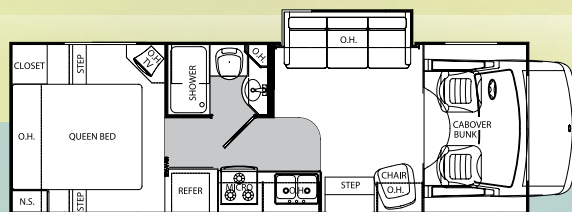
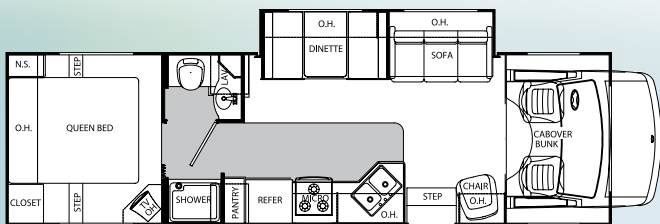




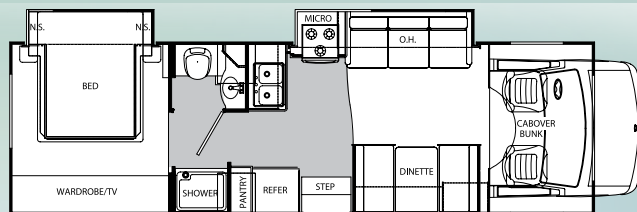
128



131



130



LIPOLEUM

CARPET

IVORY 09 FEATURES & OPTIONS

BODY CONSTRUCTION

- Fully Welded Tubular Aluminum Roof, Sidewalls and Floor
- Fully Laminated Roof, Walls and Floors w/ High-Density Block Foam Insulation
- Seamless Fiberglass Exterior Sidewalls
- Roto-Cast Storage Compartments
- Powder-Coated Rear Bumper
- Locking Exterior Storage Doors
- Pass-Through Storage Areas
- Deluxe Exterior Mirrors
- Manual Entrance Step
- Rear Wheel Mud Flaps
- Undercoating

BODY CONSTRUCTION OPTIONS

- Rear Ladder
- Heated Power Mirrors
- Electric Entrance Step
- Aluminum Running Boards
- Trailer Hitch with Wire
- Exterior Paint Package

FORD CHASSIS / ENGINE (GAS) / SUSPENSION

- Ford E350 Chassis
- Ford E450 Chassis
- 6.8L Triton® V-10 Gasoline Engine with Sequential Electronic Fuel Injection (SEFI), 305 HP @ 4,250 RPM / 420 lb. - ft. Torque @ 3250 RPM
- 5-Speed TorqShift® Automatic Transmission with Overdrive; In-tank Oil Cooler
- 115 Amp Alternator - Gas Engine / 110 Amp with opt. Diesel Engine
- Rear Axle Ratio 4.10:1 (E350 Chassis)
- Rear Axle Ratio 4.56:1
- Radial Tires
- Stainless Steel Wheel Covers
- Rear Multi-Leaf Spring Suspension with Stabilizer Bar
- ABS Brake System
- 5,000 lb. Hitch Receiver with Dual Connector 4-Pin or 7-Pin
- Dash Heating and Air Conditioner System with Defroster
- One 12V Chassis Battery
- Emergency Start Circuit

FORD CHASSIS / ENGINE / SUSPENSION / OPTIONS

- Diesel Engine
- 6.0L Power Stroke® V8 Turbo Diesel, Direct Injection

235 HP @ 3,150 RPM / 440 lb.-ft. Torque @ 2,000 RPM

- Rear Axle Ratio 4.10:1 (E450 Diesel Chassis)
- Spare Tire
- Canadian RV Certification
- Transport Canada MVSR (Also Requires RIVA)
- Stainless Steel Wheel Inserts

CHEVY CHASSIS / ENGINE / SUSPENSION

- Vortec™ 6.0L V8 Sequential Fuel Injection (SFI), 300 HP @ 4,400 RPM, 360 lb. - ft. Torque @ 4000 RPM
- 4-Speed Automatic, Heavy Duty Transmission, Electronically Controlled with Overdrive; Internal Transmission Oil Cooler
- 145 Amp Alternator
- Rear Axle Ratio 4.10:1
- Radial Tires
- Stainless Steel Wheel Covers
- Rear Multi-Leaf Spring Suspension with Stabilizer Bar
- ABS Brake System
- 5,000 lb. Hitch Receiver with Dual Connector 4-Pin or 7-Pin
- Dash Heating and Air Conditioner System with Defroster
- One 12V Chassis Battery
- Emergency Start Circuit

CHEVY CHASSIS / ENGINE / SUSPENSION / OPTIONS

- Spare Tire
- Canadian RV Certification
- Transport Canada MVSR (Also Requires RIVA)
- Stainless Steel Wheel Inserts

COCKPIT

- AM / FM / CD Radio
- Multi-Positioned Sun visors
- Power Door Locks and Windows
- Factory Air Conditioning, Cruise Control and Tilt Steering Wheel
- Intermittent Windshield Wipers
- Map Light
- Reclining Captain's Chairs

COCKPIT OPTIONS

- Rear Vision System

APPLIANCES AND ACCESSORIES

- Double - Door Refrigerator
- High Output 3-Burner Range Top
- Lighted Power Range Hood
- Satellite Dish Prep

APPLIANCES AND ACCESSORIES OPTIONS

- 3-Burner Range w/ Oven
- Microwave
- Sink Covers (2)
- Cabover Entertainment Center w/ 26" LCD Color TV
- 19" LCD Color TV - Living Room
- 19" LCD Color TV - Bedroom
- TV Antenna / Booster / Jack, Cable Ready
- DVD Video Package
- Exterior Entertainment Center, CD Player Radio with Two Speakers

INTERIOR

- Newport Cherry Cabinetry
- Booth Dinette with Cabinet Doors
- Double Bowl Stainless Steel Kitchen Sink with Satin Nickle High Rise Faucet
- Single Lever Satin Nickle Lavatory Faucet
- Laminate Countertops
- Mini Blinds with Valances and Lambrequins
- Bedsprad, Pillows and Pillow Shams
- Carpet with Padding
- Windshield Privacy Curtain

INTERIOR OPTIONS

- Decors: Brass Ring, Autumn Trail II
- Day / Night Shades
- Black Plexi-glass Refrigerator Front
- Booth Dinette IPO Sofa
- Front Cabover Window (N/A with Cabover Entertainment Center)

FURNITURE

- Barrell Chair
- Queen Bed with Innerspring Mattress
- Plush Sofa

ELECTRICAL SYSTEMS AND LIGHTS

- 30 Amp 120V Distribution Panel
- Shore Line Power Cord
- Solid State 55 Amp Electronic 12V Power Converter
- Guardian 4.0 KW Generator
- 12 V Auxiliary Battery
- Porch Light

ELECTRICAL SYSTEMS AND LIGHTS OPTIONS

- Onan RV Microquiet 4.0 Kw Generator
- Emergency Start Switch with Battery Disconnect

PLUMBING AND LP SYSTEMS

- 6 Gallon Gas Water Heater
- 12V Water Pump
- City Water Hook-up
- Water Heater By-Pass Valve
- Thetford Commode
- Shower or Tub with Bi-fold Door
- Shower Surround

PLUMBING AND LP SYSTEMS OPTIONS

- 6 Gallon Gas / Electric Water Heater with DSI
- Glass Shower Door

HEATING, VENTS AND AIR CONDITIONING

- Pre-Wire for Roof A/C

- 12V Power Roof Vent

- Furnace BTU's

HEATING, VENTS AND AIR CONDITIONING OPTIONS

- 13,500 BTU Air Conditioner
- Heat Pads for Holding Tanks
- Fantastic 12V Attic Fan with Rain Sensor

WINDOWS, DOORS AND AWNINGS

- Radius Entrance Door
- Exterior / Interior Assist Grab Handle
- Tinted Radius Corner Windows
- Skylight in Bathroom
- Topper Slide-Out Awnings

WINDOWS, DOORS AND AWNINGS OPTIONS

- Patio Awning
- Dual Pane Windows

SAFETY

- Fire Extinguisher
- Deadbolt Lock on Entrance Door
- GFI Protected Circuit, Exterior
- LP Gas Detector
- Smoke Detector
- Carbon Monoxide Detector
- Pilot and Co-Pilot Three-Point Seat Belts

IVORY B-PLUS 09 WEIGHTS & MEASUREMENTS

	121	127	128	130	131
Weights (GM Chassis - 6.0 L Vortec - V-8)					
Gross Vehicle Weight Rating	12,300	14,050	14,050	14,050	14,050
Gross Combined Weight Rating	16,000	17,600	17,600	17,600	17,600
Front Gross Axle Weight Rating	4,300	4,600	4,600	4,600	4,600
Rear Gross Axle Weight Rating	8,600	9,450	9,450	9,450	9,450
Weights (Ford Chassis - 6.8 L Triton - V-10) * (Lbs.)					
Gross Vehicle Weight Rating	11,500	14,500	14,500	14,500	14,500
Gross Combined Weight Rating (V-10 engine)	18,500	20,000	20,000	20,000	20,000
Front Gross Axle Weight Rating	4,600	5,000	5,000	5,000	5,000
Rear Gross Axle Weight Rating	8,500	9,500	9,500	9,500	9,500
Measurements					
Wheelbase - Ford	138"	191"	190"	202"	215"
Wheelbase - Chevy	139	192"	191"	203"	216"
Overall Length, Without Ladder & Spare Tire - Ford	22' 2"	27' 4"	29' 2"	30' 5"	31' 3"
Overall Length, Without Ladder & Spare Tire - Chevy	22' 11"	28' 1"	29' 11"	31' 2"	32' 0"
Overall Height, Including A/C	10' 8"	10' 8"	10' 8"	10' 8"	10' 8"
Interior Height	80"	80"	80"	80"	80"
Interior Width	95.5"	95.5"	95.5"	95.5"	95.5"
Exterior Width	99"	99"	99"	99"	99"
Tank Capacities ** (Gal.)					
Water Heater (gal.)	6	6	6	6	6
Grey Tank (gal.)	21	27	21	27	21
Black Tank (gal.)	21	25	25	25	25
Fresh Tank (gal.)	29	29	29	28	29
LP Tank (lb. / gal)	41 / 9.8	41 / 9.8	41 / 9.8	41 / 9.8	41 / 9.8
Fuel - Ford / Chevy (gal.)	37 / 35	55 / 57	55 / 57	55 / 57	55 / 57

* Towing capacity is limited by GCWR; your vehicle's towing capacity is the difference between the GCWR and the actual vehicle weight, including all water, fuel, passengers and cargo. Your towed vehicle should be equipped with auxiliary brakes if the weight of the towed vehicle exceeds 1,000 lbs. Consult your owner's manual for further towing information.

** All tank capacities are estimated based upon calculations provided by the tank manufacturers and represent approximate capacities. The actual "usable capacity" may be greater or less than the estimated capacities based upon fabrication and installation of the tanks.

*** Actual filled LP capacity is 80% of listing due to safety shut-off required on tank.

The actual overall length of the recreational vehicle may differ from that indicated in the brochure due to variances in the manufacturing process and/or installed components. The actual length may be greater or less than that indicated. Due to the large variety of options and floorplan arrangements available to our customers, actual weights for each unit can differ significantly. Safari provides a weight sticker on each unit we produce which includes that unit's tank capacities and approximate weight. Consult your local Safari dealer for unit availability and further information. The information printed in this brochure reflects product design, fabrication, and component parts at the date of printing. The manufacturer reserves the right, at any time, to make changes in product design or material or component specifications as its sole option, without notice. This includes the substitution of components of a different brand or trade name which will result in comparable performance. All information printed in this brochure is subject to change after the date of printing. Some features shown or mentioned in this brochure are optional and may only be available in selected floorplans. Photographs may show props or decorations that are not standard equipment on Safari models. Safari, the Safari logo and its design, are registered trademarks. All other products and company names are trademarks and/or registered trademarks of their respective holders. While the color of the motorhome's exterior and the interior fabrics depicted in this sales brochure are fair and reasonable depictions, the colors depicted may not be an exact match of the actual colors because of the variances in photo-processing and variances caused by inserting the photographs within the sales brochure. Due to product improvements, changes during the model year and/or transcription errors that may occur, information represented within this brochure may not be accurate at the time of your purchase. If certain information is significant to your purchasing decision, please confirm the information with your dealer prior to submitting your order. Component part and appliance manufacturers issue limited warranties covering those portions of the recreational vehicle not covered by the Limited Warranties issued by Monaco Coach Corporation. To learn which specific component parts and appliances are excluded from the Limited Warranties issued by Monaco Coach Corporation, please contact your selling dealership or Monaco Coach Corporation directly, or review the warranty packet inside the recreational vehicle.



WE'RE HERE. ANYTIME, EVERY TIME.

- Reach us anytime — literally — via our live customer support line.
- Drive in to one of our 350 Service Centers.
- Enjoy the first year free when you enroll in our Owner Advantage Roadside Assistance Program.
- See where it all begins with a tour of one of our facilities in Indiana or Oregon.
Call 1-800-650-7337 or 1-800-634-0855 to find out more.



EMERGENCY ASSISTANCE
SALES • TECH • ROADSIDE

Safari

Ivory 09



BEING DIFFERENT MAKES ALL THE DIFFERENCE.

Take a closer look, and you'll discover that Safari, a brand of Monaco Coach Corporation, gives you more industry "bests" than any other RV manufacturer. Like the incomparable ride and handling of the Roadmaster Chassis. The convenience of our 350 service centers. The peace of mind of 24/7 roadside assistance. The value of Monaco Financial Services. And the online support of safariMotorcoaches.com. At Safari, we've built our reputation by listening to you — and answering to you. And that's the difference that's made us the best. Find out more by visiting www.monacodifferent.com.

WARRANTIES

12 MONTH/24,000 MILE basic limited warranty

5 YEAR/50,000 MILE limited warranty on aluminum or steel frame structure of sidewall, roof, front and rear cap

3 YEAR/50,000 MILE limited warranty on Roadmaster chassis

Applies to certain models. See owner's manual for complete details.

CHEETAH

SIMBA® RD

COMPRESSION
GAS & DIESEL TOYHAULER

SIMBA® GAS

TREK®

PASSAGE™

IVORY®

DAMARA®