

# Safari

Passage 09

Live out loud.™





### JUST A CLICK AWAY

Safari is always just a click away. You'll find dealer links, service center locations, owner news and all the latest information on your Passage on our friendly, easy-to-navigate website. It's a direct link to everything Safari that can be accessed anytime, day or night, from home or on the road. Visit [www.safarimotorcoaches.com](http://www.safarimotorcoaches.com).

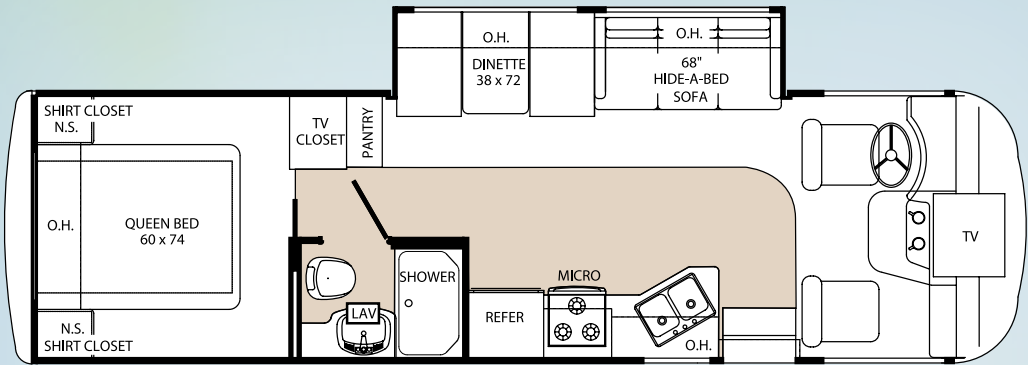


**Live out loud.**

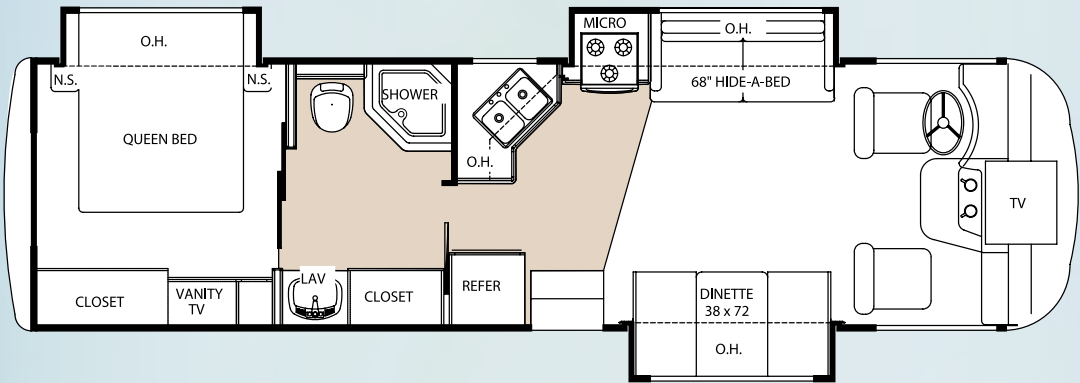
[www.safarimotorcoaches.com](http://www.safarimotorcoaches.com)

LINOLEUM CARPET

300



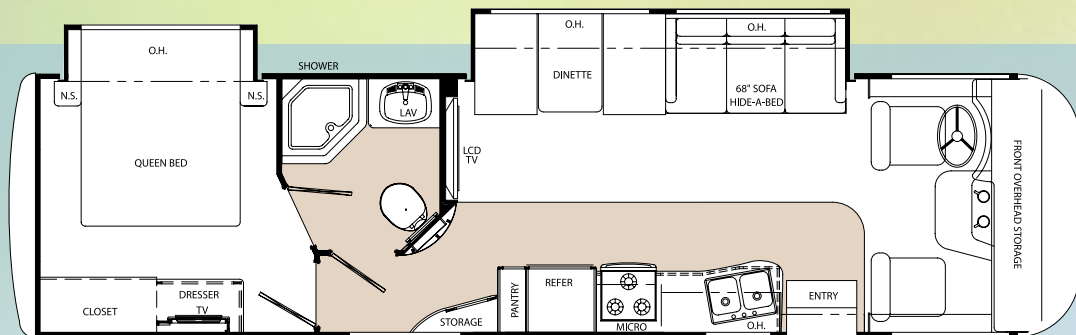
310



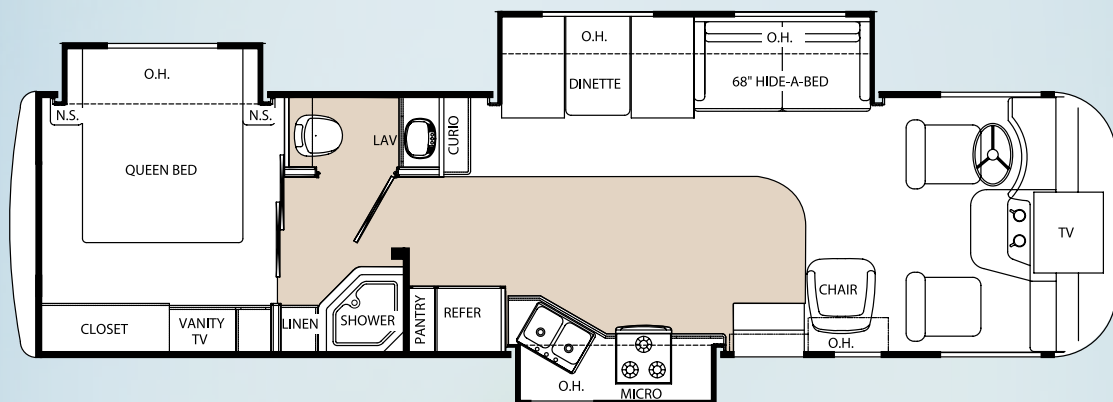
LINOLEUM

CARPET

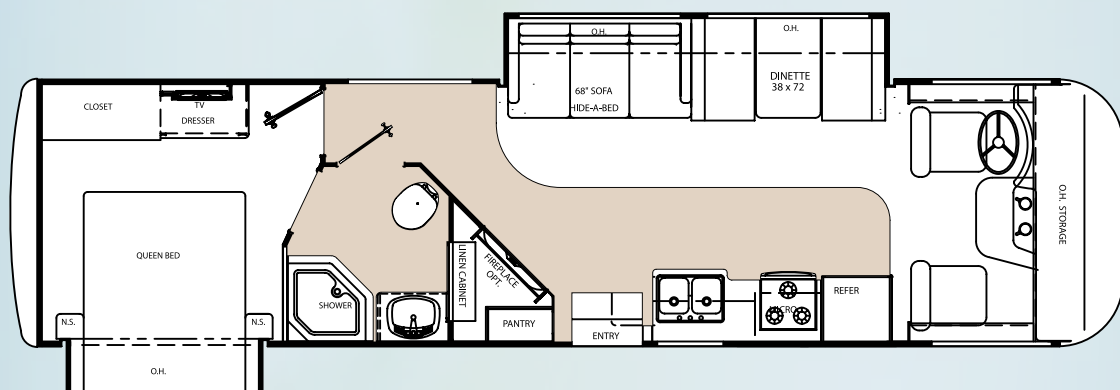
330



340



341





	300	310	330	340	341
<b>Weights (Workhorse Chassis - 8.1 L Vortec - V-8) * (Lbs.)</b>					
Gross Vehicle Weight Rating	16,000	18,000	21,200	21,200	21,200
Gross Combined Weight Rating	22,000	22,000	26,000	26,000	26,000
Front Gross Axle Weight Rating	6,500	7,000	7,500	7,500	7,500
Rear Gross Axle Weight Rating	10,500	12,000	13,500	13,500	13,500
<b>Weights (Ford Chassis - 6.8 L Triton - V-10) * (Lbs.)</b>					
Gross Vehicle Weight Rating	16,000	18,000	20,500	20,500	20,500
Gross Combined Weight Rating	26,000	26,000	26,000	26,000	26,000
Front Gross Axle Weight Rating	6,000	7,000	7,000	7,000	7,000
Rear Gross Axle Weight Rating	11,000	11,000	13,500	13,500	13,500
<b>Measurements</b>					
Wheelbase - Ford	190"	190"	208"	208"	208"
Wheelbase - Workhorse	190"	190"	208"	208"	208"
Overall Length, Without Ladder - Ford	31'	32' 8"	33' 11"	34' 8"	34' 8"
Overall Length, Without Ladder - Chevy	31'	32' 8"	33' 11"	34' 8"	34' 8"
Overall Height, Including A/C	11' 8"	11' 8"	11' 8"	11' 8"	11' 8"
Interior Height	80"	80"	80"	80"	80"
Interior Width	95.5"	95.5"	95.5"	95.5"	95.5"
Exterior Width	99"	99"	99"	99"	99"
<b>Tank Capacities ** (Gal.)</b>					
Water Heater (gal.)	6	6	6	6	6
Grey Tank (gal.)	40	40	40	40	40
Black Tank (gal.)	40	40	40	40	40
Fresh Tank (gal.)	50	50	50	50	50
LP Tank (lb. / gal.)	68 / 16	68 / 16	68 / 16	68 / 16	68 / 16
Fuel - Ford / Workhorse (gal.)	75	75	75	75	75

\* Towing capacity is limited by GCWR; your vehicle's towing capacity is the difference between the GCWR and the actual vehicle weight, including all water, fuel, passengers and cargo. Your towed vehicle should be equipped with auxiliary brakes if the weight of the towed vehicle exceeds 1,000 lbs. Consult your owner's manual for further towing information.

\*\* All tank capacities are estimated based upon calculations provided by the tank manufacturers and represent approximate capacities. The actual "usable capacity" may be greater or less than the estimated capacities based upon fabrication and installation of the tanks.

\*\*\* Actual filled LP capacity is 80% of listing due to safety shut-off required on tank.

The actual overall length of the recreational vehicle may differ from that indicated in the brochure due to variances in the manufacturing process and/or installed components. The actual length may be greater or less than that indicated. Due to the large variety of options and floorplan arrangements available to our customers, actual weights for each unit can differ significantly. Safari provides a weight sticker on each unit we produce which includes that unit's tank capacities and approximate weight. Consult your local Safari dealer for unit availability and further information. The information printed in this brochure reflects product design, fabrication, and component parts at the date of printing. The manufacturer reserves the right, at any time, to make changes in product design or material or component specifications as its sole option, without notice. This includes the substitution of components of a different brand or trade name which will result in comparable performance. All information printed in this brochure is subject to change after the date of printing. Some features shown or mentioned in this brochure are optional and may only be available in selected floorplans. Photographs may show props or decorations that are not standard equipment on Safari models. Safari, the Safari logo and its design, are registered trademarks. All other products and company names are trademarks and/or registered trademarks of their respective holders. While the color of the motorhome's exterior and the interior fabrics depicted in this sales brochure are fair and reasonable depictions, the colors depicted may not be an exact match of the actual colors because of the variances in photo-processing and variances caused by inserting the photographs within the sales brochure. Due to product improvements, changes during the model year and/or transcription errors that may occur, information represented within this brochure may not be accurate at the time of your purchase. If certain information is significant to your purchasing decision, please confirm the information with your dealer prior to submitting your order. Component part and appliance manufacturers issue limited warranties covering those portions of the recreational vehicle not covered by the Limited Warranties issued by Monaco Coach Corporation. To learn which specific component parts and appliances are excluded from the Limited Warranties issued by Monaco Coach Corporation, please contact your selling dealership or Monaco Coach Corporation directly, or review the warranty packet inside the recreational vehicle.



WE'RE HERE. ANYTIME, EVERY TIME.

- Reach us anytime — literally — via our live customer support line.
- Drive in to one of our 350 Service Centers.
- Enjoy the first year free when you enroll in our Owner Advantage Roadside Assistance Program.
- See where it all begins with a tour of one of our facilities in Indiana or Oregon.  
Call 1-800-650-7337 or 1-800-634-0855 to find out more.



**EMERGENCY ASSISTANCE**  
SALES • TECH • ROADSIDE

## EXTERIOR

- Fully Welded Tublar Aluminum Roof, Sidewalls and Floor
- Fully Laminated Roof, Walls and Floors w/ High-Density Block Foam Insulation
- Seamless Fiberglass Exterior Sidewalls
- Roto-Cast Storage Compartments
- One-Piece Fiberglass Front and Rear Caps
- Rubber Roof
- Rear Ladder
- Flush-Mount Radius Baggage Doors
- Pass-Through Storage Areas
- Deluxe Exterior Mirrors
- Automatic Electric Entrance Step
- Roof Ladder
- Fog Lights
- Rear Wheel Mud Flaps

## OPTIONS

- Full Body Paint
- Partial Paint
- Heated Power Mirrors

## FORD CHASSIS / ENGINE / SUSPENSION

- 6.8L Triton® V-10, 3-Valve, Gasoline Engine with Sequential Electronic Fuel Injection (SEFI), 362 HP @ 4,750 RPM / 457 lb. - ft. Torque @ 3250 RPM
- Engine Displacement: 6.8 Liters 415 Cu. In.
- 5-Speed TorqShift® Automatic Transmission with Overdrive & Tow / Haul Mode
- 130 Amp Alternator
- Rear Axle Ratio 5.38:1
- Radial Tires
- Stainless Steel Wheel Liners w/ Valve Extenders
- Rear Multi-Leaf Spring Suspension
- Automatic Hydraulic Leveling Jacks
- Four-wheel ABS Brake System
- 5,000lb Hitch Receiver with Dual Connector 4-Pin

- or 7-Pin
- Dash Heating and Air Conditioner System with Defroster
- One 12V Chassis Battery
- Emergency Start Switch

## WORKHORSE CHASSIS / ENGINE / SUSPENSION

- Vortec™ 8.1L V-8, Sequential Fuel Injection (SFI), Gasoline Engine 340 HP @ 4,200 rpm; 455 lb.-ft. torque @ 3,200 rpm
- Engine Displacement: 8.1 Liters, 496 Cu. In.
- Hydra-matic 4L85-E, Automatic 4-speed Electric with Overdrive
- Allison 1000 MH Automatic 6-Speed Automatic Transmission with Overdrive and Transmission Grade Braking
- 145 Amp Alternator
- Rear Axle Ratio 4.63:1
- Rear Axle Ratio 5.13:1
- Radial Tires
- Stainless Steel Wheel Liners w/ Valve Extenders
- Rear Multi-Leaf Spring Suspension
- Automatic Hydraulic Leveling Jacks
- ABS Brake System
- 5,000lb Hitch Receiver with Dual Connector 4-Pin or 7-Pin
- Dash Heating and Air Conditioner System with Defroster
- One 12V Chassis Battery
- Emergency Start Circuit

## OPTIONS

- Canadian RV Certification
- Transport Canada MVSR (Also Requires RIVA)
- Automatic Hydraulic Leveling Jacks

## COCKPIT

- AM / FM / CD / Cassette Radio w/ Weather Band and Sirius® Satellite Ready
- Wood Grain Dash Kit
- Dash Fans
- Multi-Positioned Sun Visors
- Power Door Locks and Windows
- Factory Air Conditioning, Cruise Control and Tilt Steering Wheel
- Intermittent Windshield Wipers
- Map Lights
- Leatherette, Reclining Captain's Chairs

## OPTIONS

- Rear Vision System
- Six-Way Power Driver's Seat

## APPLIANCES AND ACCESSORIES

- Double -Door Refrigerator
- 3-Burner High Output Gas Range with Oven
- 32" Color LCD TV in Main Living Area
- 26" Color LCD TV in Cockpit Overhead Cabinet
- 19" Color LCD TV - Bedroom (Select Floorplans)
- Microwave Oven
- Slide-Out pantry
- Lighted Power Range Hood
- Cable TV & Satellite Dish Prep

## OPTIONS

- Half-Time Microwave Oven w/ 3 Burner Range Top
- Fireplace (Select Floorplans)
- Surround Sound Home Theater w/ DVD Player
- DVD Player
- 19" Color LCD TV - Bedroom
- Satellite Dish
- Exterior Entertainment Center, AM / FM / CD w/ 2 Speakers

## INTERIOR

- Newport Cherry Cabinetry
- Booth Dinette with Cabinet Doors
- Residential Linoleum (entry way, galley and bath)
- Soft-Touch Vinyl Ceiling
- Large Double Bowl Stainless Steel Kitchen Sink
- Single Lever Satin Nickel Lavatory Faucet
- Mortise and Tenon Arched Raised Panel Overhead Cabinet Doors

- Brushed Nickel Cabinet Hardware
- Laminate Countertops Throughout
- Kitchen Countertop Extension
- Mini Blinds with Valances and Lambrequins
- Television Cabinet - Bedroom
- Bedroom Vanity w/ Stool
- Bedspread, Pillows and Pillow Shams
- Carpet with Padding

## OPTIONS

- Decors: Brass Ring, Autumn Trail II
- Day / Night Shades Throughout

## FURNITURE

- Barrell Chair
- Fabric Hide-a-Bed Sofa

- Queen Bed with Innerspring Mattress

## OPTIONS

- Leatherette Hide-a-Bed Sofa
- Leatherette Euro Recliner w/ Ottoman IPO Barrel Chair

## ELECTRICAL SYSTEM OPTIONS

- 30 Amp 120V Distribution Panel
- 50 Amp 120V Distribution Panel
- Shore Line Power Cord
- Guardian 4.0 Kw Generator
- Guardian 5.5 Kw Generator

- 12 V Auxiliary Battery
- Battery Disconnect Switch
- Overhead Lights in Living Room
- Porch Light

## OPTIONS

- 50 amp Service w/ 6-gal Gas / Elec. Water Heater (requires 50 amp service)
- Onan 4.0 Kw Generator
- Guardian 5.5 Kw Generator
- Onan 5.5 Kw Generator
- Second Auxiliary Battery

## PLUMBING AND LP SYSTEMS

- 6 Gallon Gas Water Heater
- 12V Water Pump
- Exterior Utility Center
- Exterior Shower

- Water Heater By-Pass Kit
- China Bowl Toilet
- Neo-Angled Shower w/ Glass Door

## OPTIONS

- Exterior Shower
- Glass Shower Door

## HEATING, VENTS AND AIR CONDITIONING

- 13,500 BTU Roof Air Conditioner - Front
- In-Floor Rigid Heat Ducts
- 12V Power Roof Vent in Bathroom

- Heated Holding Tanks

## OPTIONS

- 13,500 BTU Roof Air - Rear Requires 50 Amp Svc. & 5.5 KW Generator
- Heat Pads for Holding Tanks
- Fantastic Fan - Living Room

## WINDOWS, DOORS AND AWNINGS

- Radius Entrance Door
- Patio Awning
- Slide-Out Topper Awnings
- Large Metal Entry Grab Handle

- Tinted Radius Corner Windows
- Skylight in Shower
- Topper Slide-Out Awnings

## OPTIONS

- Dual Pane Windows

## SAFETY

- Fire Extinguisher
- Deadbolt Lock on Entrance Door
- GFI Protected Circuit, Exterior

- LP Gas Detector
- Smoke Detector
- Carbon Monoxide Detector

- Pilot and Co-Pilot Three-Point Seat Belts
- Seat Belts Throughout



## BEING DIFFERENT MAKES ALL THE DIFFERENCE.

Take a closer look, and you'll discover that Safari, a brand of Monaco Coach Corporation, gives you more industry "bests" than any other RV manufacturer. Like the incomparable ride and handling of the Roadmaster Chassis. The convenience of our 350 service centers. The peace of mind of 24/7 roadside assistance. The value of Monaco Financial Services. And the online support of [safari motorcoaches.com](http://safari motorcoaches.com). At Safari, we've built our reputation by listening to you — and answering to you. And that's the difference that's made us the best. Find out more by visiting [www.monacodifferent.com](http://www.monacodifferent.com).

## WARRANTIES

12 MONTH/24,000 MILE basic limited warranty

5 YEAR/50,000 MILE limited warranty on aluminum or steel frame structure of sidewall, roof, front and rear cap

3 YEAR/50,000 MILE limited warranty on Roadmaster chassis

Applies to certain models. See owner's manual for complete details.

CHEETAH

SIMBA® RD

COMPRESSION  
GAS & DIESEL TOYHAULER

SIMBA® GAS

TREK®

PASSAGE™

IVORY®

DAMARA®