

## 391SUT SPORT/UTILITY TRAILER



## OUTSTANDING IN ITS FIELD

Take it all with you without compromising quality and elegant living space. Our SUT model is built on a Titan fifth wheel chassis. It's the best toy hauler in the industry.



## WE LIKE TO CALL IT OUR "SURV." YOU'LL CALL IT BRILLIANT

The SUT (Sport/Utility Trailer) is unique compared to the competition. It appeals to the discriminating RVer who wants a more solid trailer along with a more luxurious living area. The 40' SUT's 10' cargo area is ideal for hauling golf carts, ATVs, motorcycles or any kind of bulky, yet valuable, cargo.



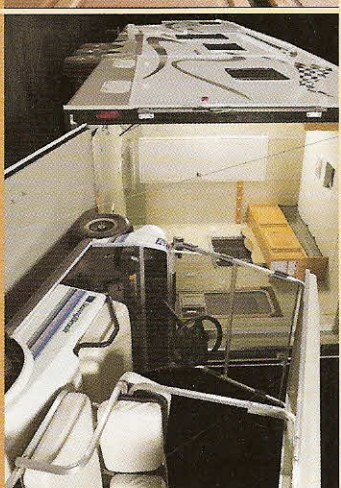
### PARTITION WALL WITH DOOR

The cargo area features a sealed wall to keep fumes and dirt out of the living area. A Rhino brand sprayed floor highlights the cargo floor.



### LUXURIOUS LIVING AREA

Built on the popular, high-end Titan chassis, the SUT gives up nothing in elegant, comfortable living, dining and sleeping space.



### LARGE CARGO AREA

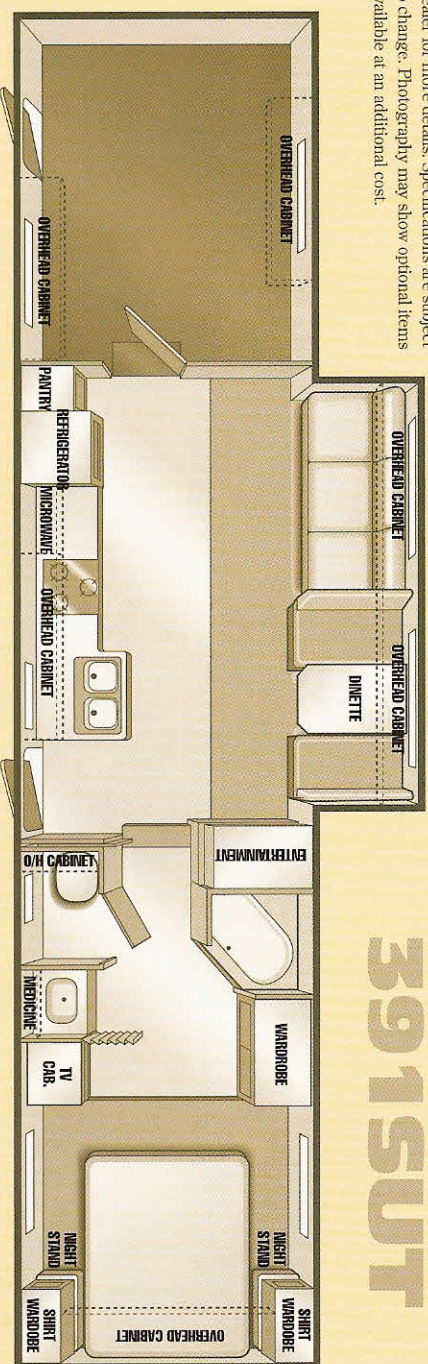
The 10' cargo compartment has a separate side door and ramp door, cabinetry, window, tie downs and many other user-friendly features.

### SPECIFICATIONS

#### 3915UT

Exterior Length*	39'-10"
Exterior Height**	12'-6"
Exterior Width	8'-2.5"
Interior Height	7'-5"
Dry Hitch Weight***	2760
Dry Gross Weight***	12,076
GVMR	18,000
Carrying Capacity	5924
Axles	Triple Straight
Tire Size	L1235/80 R16D
Hitch Height	46"
Optional Awning Size	19'
Furnace Size	35M BTU
Domestic Gas/EI. Refer.	Double Door
Fresh Water Capacity	60
Black Water Tank Cap.	50
Gray Water Tank Cap.	90
Sleeping	6

See your authorized SunnyBrook or Mobile Scout dealer for more details. Specifications are subject to change. Photography may show optional items available at an additional cost.



### FLOORPLAN AVAILABLE WITH THESE OPTIONS

