

BROOKSIDE

By Sunny Brook

THE BEST OF ALL WORLDS



MID-LEVEL PRICING.

HIGH-END AMENITIES.

SUNNYBROOK QUALITY.



Model 302 FKS shown in Elegance color.

Brookside fifth-wheel and travel trailers are unique in that they combine comfort features and amenities more common to RVs costing much more, with SunnyBrook RV's great reputation for solid value and quality of construction. You are sure to benefit from years of enjoyment as you travel in luxury. And travel with peace of mind knowing a Brookside, by SunnyBrook RV, will hold up down the road. We offer elegant fabrics and color choices, a wide variety of floorplans and, best of all, unsurpassed standard features unique to a Brookside.



Model 349 FWSB shown in Summer Jazz



Bathrooms with the amenities of home.



A true Queen-sized bed (60"x80") is standard.

The photograph at the top of this page shows just how large and luxurious a Brookside interior is. From its standard stain-resistant Marquessa® fabrics, to solid wood cabinetry and

extra tall interior slideout height; Brookside has it all. Bathrooms feature standard Porcelain toilets and tub shower surround. Bedrooms are spacious and feature a true Queen-sized

bed along with quality bedspread and valances with curtains. Your elegant Brookside interiors are built on 5/8" exterior grade plywood decking and I-beam frame—best in the industry!



Model 299 FWBHS shown in Contemporary.



Extra large storage and radiused baggage doors are standards.



Residential style countertops and pull-out faucet are standard.



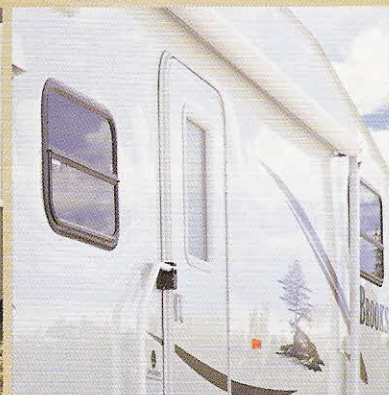
Other brands come with cheap plastic toilets. Not a Brookside. We offer standard porcelain foot-flush toilets.



This aluminum tread plate (ATP) front stoneguard is standard on travel trailer models. It looks great while keeping road debris down.



Dual 30 lb. LP tanks are standard in this slider compartment. Brookside offers many convenience features others ignore.



Standard gelcoat exterior sidewalls make a Brookside look better and radiused 30" entry door and windows are high-end as well.



All Aluminum Superstructure!

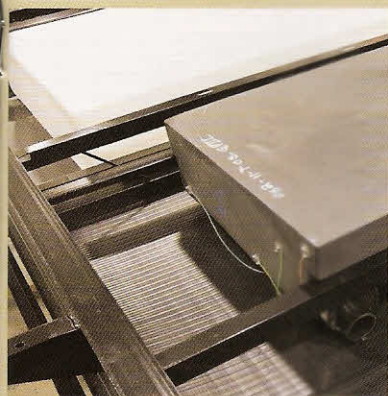
CONSTRUCTION

With a Brookside, you'll find that our aluminum Superstructure is stronger, tows easier and will look better longer than others on the market today. You will also get a higher return on your investment than any of the want-to-be aluminum units on the market.

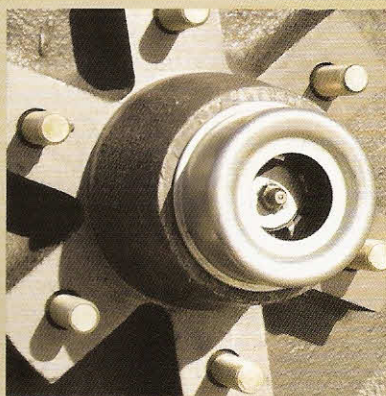
SunnyBrook RV set the standard high. That's why we created and developed this aluminum-framed construction. Our ultra-light structure means a smoother ride, less fuel consumption, and a stronger body. Other brands either use minimal aluminum framing or an inexpensive, complete wood structure. Of course, if you look closer, it's easy to see that they use far less aluminum and structural support. SunnyBrook RV pioneered the aluminum Superstructure over 15 years ago because they care about quality. If you're looking for the best built trailers, see what's under the surface on a Brookside.

FEATURES	BROOKSIDE	OTHERS*
Z-Frame Storage	YES	NO
All Aluminum Superstructure	YES	NO
Hi-Gloss Gelcoat Exterior	YES	NO
XL Fresh Water Storage Capacity (60 gal.)	YES	NO
"Sky View" Window (Above Slideout)	YES	NO
True Queen-Size Bed (60" x 80")	YES	NO
True 5.1 Stereo Surround Sound	YES	NO
Satellite Prep	YES	NO
Oversized Countertops	YES	NO
Extra Tall Interior Slideout Height	YES	NO
Poplar Hardwood Cleats	YES	NO
Lumber Core Stiles	YES	NO
Steel Bathroom Floor Framing	YES	NO
Pull-Out Faucet in Galley	YES	NO
Floor Decking - 5/8" Exterior Grade Plywood	YES	NO

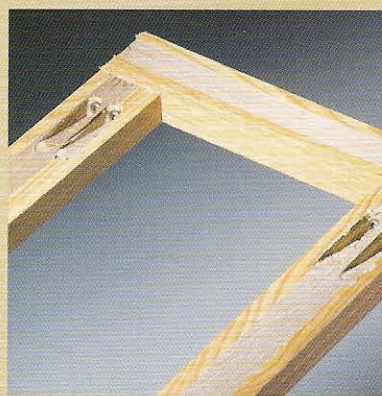
* This comparison is to "other" competitors in same category. Competitive models and features may vary.



Heated and enclosed holding tanks (60 gallon fresh!) along with ducted floor heat, and solid steel I beam frame are first class!



Beefy, six-lug hubs and Super Lube axles are standard. A Brookside unit is built better and easier to maintain than others.

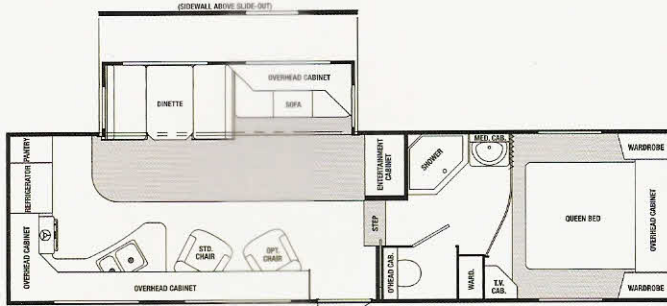


Real, poplar hardwood (vs. cheap yellow pine) is screwed together to provide the best cabinetry. We use Lumber Core cabinet stiles too.

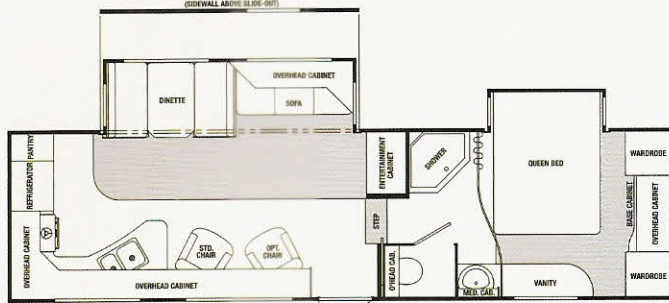


Your Brookside is built better. R7 insulation and a full walk-on and rubber roof are more proof. Check out our aluminum superstructure!

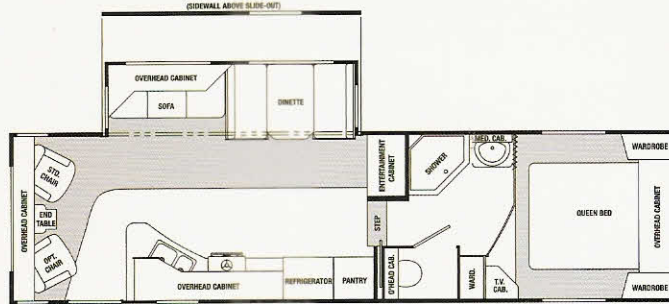
MODERN BROOKSIDE FLOORPLAN LAYOUTS



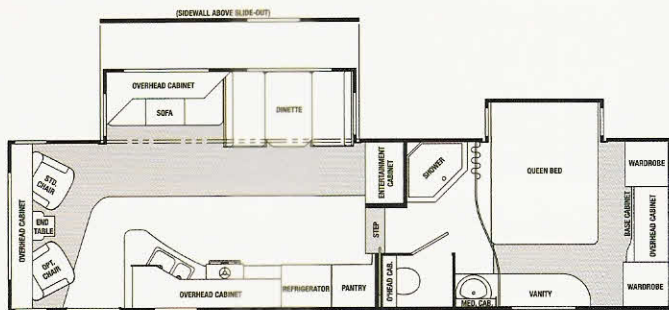
275 FWRKS | FIFTH WHEEL



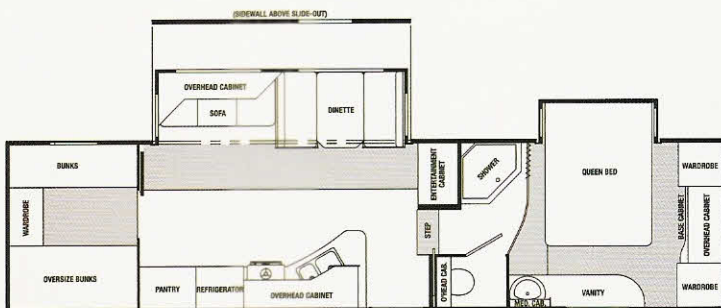
276 FWSCS | FIFTH WHEEL



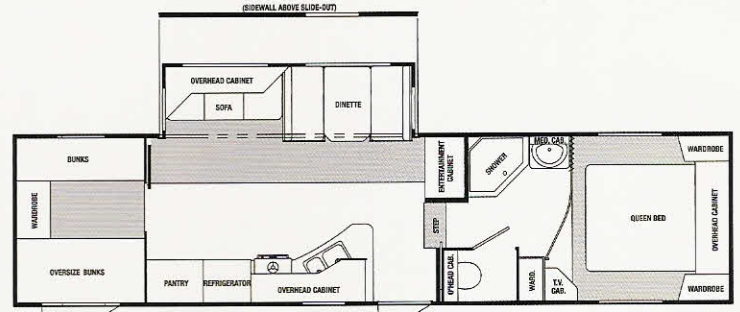
289 FWRLS | FIFTH WHEEL



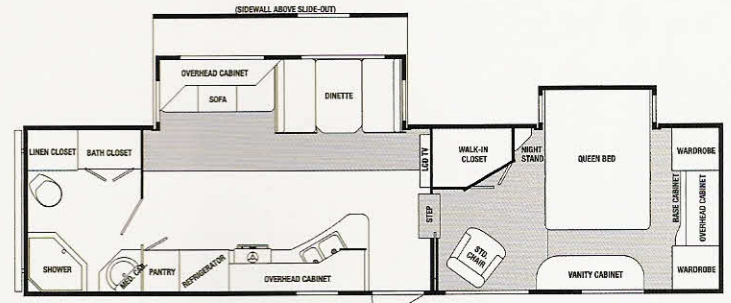
290 FWRLS | FIFTH WHEEL



298 FWBHS | FIFTH WHEEL



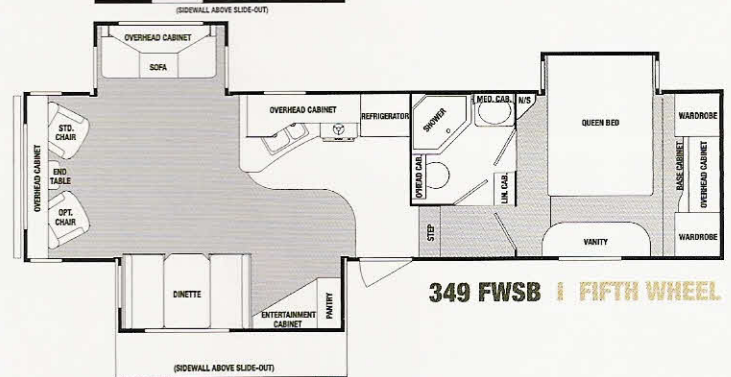
299 FWBHS | FIFTH WHEEL



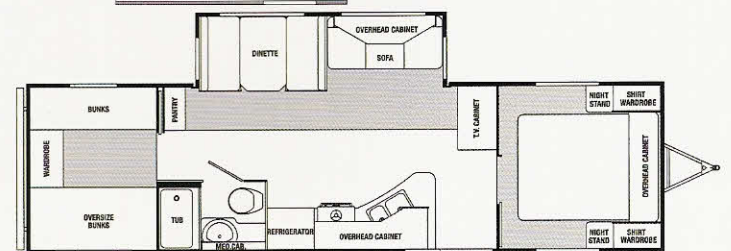
310 FWMS | FIFTH WHEEL



345 FWSE | FIFTH WHEEL



349 FWSB | FIFTH WHEEL

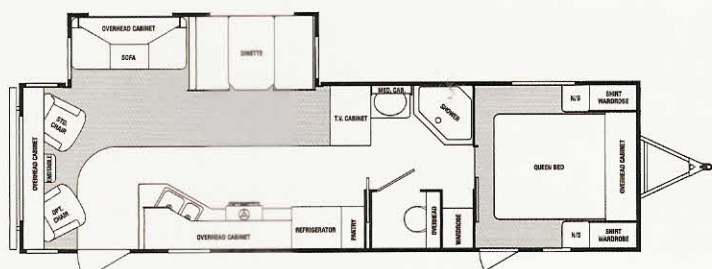


297 BHS | TRAVEL TRAILER

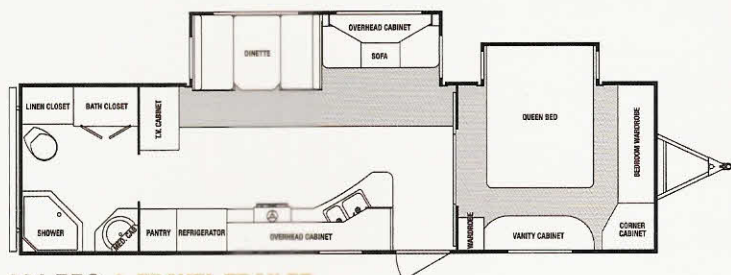
UNSURPASSED SPECIFICATIONS & FEATURES

	275 FWRKS	276 FWSCS	289 FWRLS	290 FWRLS	298 FWBHS	299 FWBHS	310 FWMS	345 FWSE	349 FWSB	297BHS	300 RLS	301 RBS	302 FKS	303 SLS
EXTERIOR LENGTH*	32'	32'	32'	32'	34'- 2"	34'- 2"	34'- 1"	34'- 9"	34'- 10"	33'- 9 5/8"	33'- 1"	33'- 10"	33'- 10"	33'- 10"
EXTERIOR HEIGHT**	12'- 3"	12'- 3"	12'- 1"	12'- 3"	12'- 7"	12'- 5"	12'- 7"	12'- 3"	12'- 3"	11'- 1"	11'- 1"	11'- 1"	11'- 1"	11'- 1"
EXTERIOR WIDTH	8'- 0"	8'- 0"	8'- 0"	8'- 0"	8'- 0"	8'- 0"	8'- 0"	8'- 0"	8'- 0"	8'- 0"	8'- 0"	8'- 0"	8'- 0"	8'- 0"
INTERIOR HEIGHT	7'- 11"	7'- 11"	7'- 11"	7'- 11"	7'- 11"	7'- 11"	7'- 11"	7'- 11"	7'- 11"	6'- 8"	6'- 8"	6'- 6"	6'- 6"	6'- 8"
DRY HITCH WEIGHT/LBS.***	1490	1831	1750	2145	2119	1831	1975	2183	2084	1103	905	1194	955	1020
DRY GROSS WEIGHT/LBS.***	8128	8623	8143	8668	9032	8608	8940	9484	9472	7381	7112	7543	7588	7442
GVWR/LBS.	12700	12700	12700	12700	12700	12700	12700	12700	12700	10000	10000	10000	10000	10000
DUAL 5,200 LBS.	STR Axles	STR Axles	STR Axles	STR Axles	STR Axles	STR Axles	STR Axles	STR Axles	STR Axles	STR Axles	STR Axles	STR Axles	STR Axles	STR Axles
TIRE SIZE	ST225/75D15D	ST225/75D15D	ST225/75D15D	ST225/75D15D	ST225/75D15D	ST225/75D15D	ST225/75D15D	ST225/75D15D	ST225/75D15D	ST225/75D15D	ST225/75D15D	ST225/75D15D	ST225/75D15D	ST225/75D15D
HITCH HEIGHT	45 1/2"	45 1/2"	45 1/2"	45 1/2"	45 1/2"	45 1/2"	45 1/2"	45 1/2"	45 1/2"	20"	20"	20"	20"	20"
AWNING SIZE	17'	17'	17'	17'	20'	20'	20'	14'	14'	20'	19'	20'	20'	20'
FURNACE SIZE	31M BTU	31M BTU	31M BTU	31M BTU	31M BTU	31M BTU	35M BTU	30M BTU	30M BTU	30M BTU	30M BTU	31M BTU	31M BTU	30M BTU
DOMETIC GAS/ELEC REFRIG.	Double Door	Double Door	Double Door	Double Door	Double Door	Double Door	Double Door	Double Door	Double Door	Double Door	Double Door	Double Door	Double Door	Double Door
FRESH WATER CAPACITY/GAL.	56	56	56	56	56	56	56	60	56	56	56	56	56	56
BLACK WATER CAPACITY/GAL.	33	33	33	33	33	33	33	33	33	33	33	33	33	33
GRAY WATER CAPACITY/GAL.	63	63	63	63	63	63	35	63	63	33	33	35	66	35
SLEEPING CAPACITY	6	6	6	6	10	10	6	6	6	10	6	6	6	6

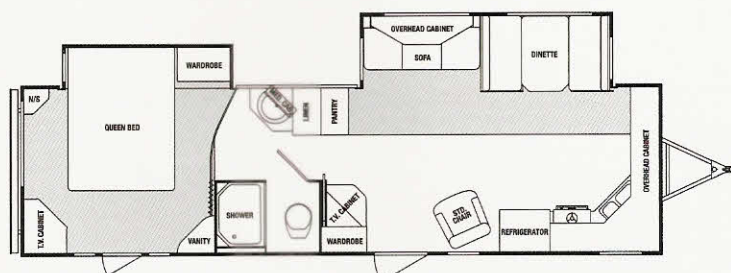
*Measured from center of king pin to rear bumper. **Includes air conditioner on roof. ***Does not include optional equipment.



300 RLS | TRAVEL TRAILER



301 RBS | TRAVEL TRAILER



302 FKS | TRAVEL TRAILER

STANDARD FEATURES

EXTERIOR

- I-Beam Frame
- Heated and Enclosed Tanks
- R-7 Insulation
- Full Walk on Roof
- Rubber Roof
- 30" Radius Entry Door
- High Illumination Scare Light
- Large Swing Out Entry Handle
- Dual 30lb. LP Tanks w/ Slide Tray
- Radius Baggage Doors
- Dual Hitch Safety Chains (TT's only)
- Bumper w/ Drain Hose Carrier
- Super Lube Axles
- Awning
- Stabilizer Jacks
- 60 Gallon Fresh Water Tank
- Telephone Jack
- High Gloss Gel Coat Exterior
- Power Front Jacks (FW's only)

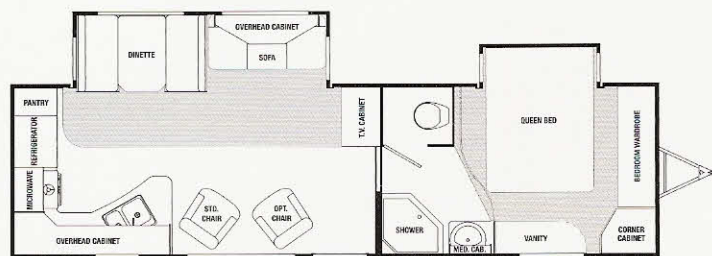
INTERIOR

- 13.5 Ducted Air Conditioner
- Ducted Floor Heat
- Extra Large Storage
- 5/8" Plywood Flooring
- Porcelain Foot Flush Toilet
- Night Shades
- Satellite Prep
- Rebound Carpet Padding
- Cable TV Hookup
- Glass Shower Door (when applicable)
- TV Antenna and Booster
- Tub / Shower Surround
- Double Door Refrigerator
- Deep Lipped Overhead Cabinetry
- Microwave
- Oven 21"
- Entertainment Center Cabinet
- Pull-out Kitchen Faucet
- Under Bed Storage w/ Gas Struts
- Residential Style Countertop
- Oversized Lavatory Sink
- True 5.1 Stereo Surround
- AM/FM/DVD 5.1 Entertainment Center
- Lumber Core Cabinet Stiles
- 3 Burner Range
- Screwed Cabinet Frames
- Extra Large Kitchen Countertop
- 2 Year Cabinet Door Warranty
- LP Leak Detector
- Metal Drawer Guides
- Carbon Monoxide detector
- Poplar Wood Cleats (a true hardwood)
- Bathroom Power Vent
- Extra Large Booth Dinette

- 60" X 80" Bed
- Angled and Stylish Overhead Cabinetry
- Wallpaper Border
- Bedspread
- Valances with Curtains
- Water Heater By-pass
- 6 Gallon DSI Gas/Electric Water Heater
- E-Z Winterizing System

OPTIONAL EQUIPMENT

- Range Cover
- Sink Cover
- TV Shelf w/ Jack in Bedroom
- 10 Gallon Gas/Electric DSI Water Heater
- Free Standing Table w/ 4 Chairs
- Outside Shower
- Spare Tire
- Rear Ladder
- 8 Cu Ft. Extra Large Refrigerator
- Swivel Rocker
- Hide-a-Bed Sofa
- 15,000 BTU Air Conditioner
- Raised Panel Refrigerator Front
- Tinted Safety Glass Windows



303 SLS | TRAVEL TRAILER



BROOKSIDE
By SunnyBrook



www.sunnybrookrv.com

(574) 825-5250

201 14th Street

Middlebury, IN 46540

Printed in the USA

© SunnyBrook RV, Inc

Rev. 3/08

All illustrations and specifications contained in this literature are based on the latest product information available at the time of printing. SunnyBrook RV, Inc. reserves the right to make changes to colors, materials, specifications and pricing without notice or obligation. Photography may show optional equipment available at an additional cost. Items used as props in photography are not part of the packages. All liquid capacities and weights are approximate and dimensions are nominal. SunnyBrook RV reserves the right to make changes and improvements without incorporating these changes into similar models produced at an earlier date. Consult your local, authorized Brookside or SunnyBrook dealer for the latest information and changes. SunnyBrook RV, Inc. continues to be a member in good standing of the RVIA.