

# *Sunny Brook* *Mobile Scout*

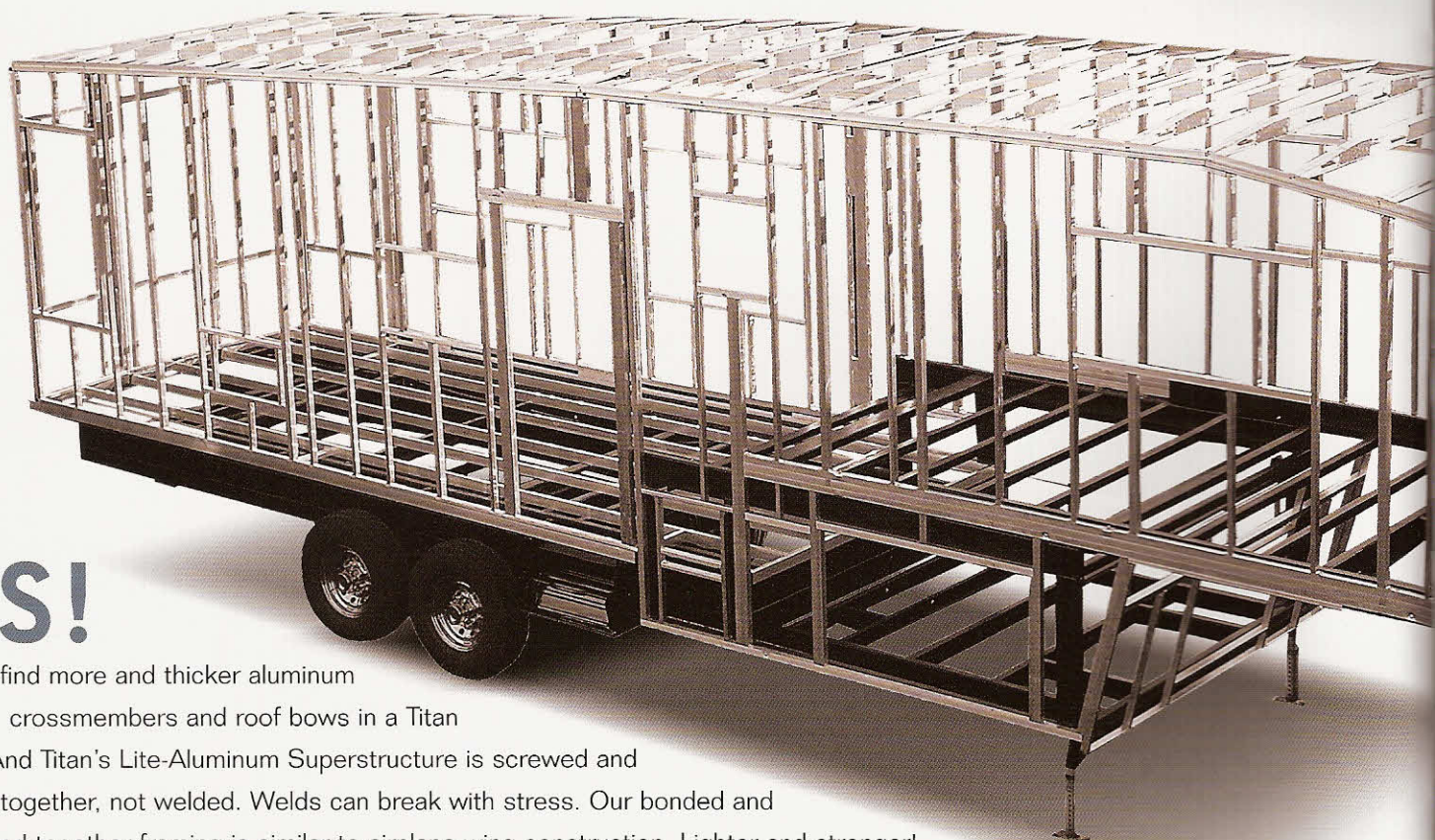


*They'll know you've arrived.*

TITAN LX TITAN SURV

## THE ORIGINAL LITE-ALUMINUM SUPERSTRUCTURE

You've arrived at the pinnacle of RV quality. Titan models feature the original Lite-Aluminum Superstructure by which all the other so-called aluminum-framed fifth-wheel brands are measured. Does anyone build to SunnyBrook's high standards? See for yourself. Our aluminum Superstructure is stronger, tows easier and will look better longer—giving you a higher return on your investment than anything else on the market today. Ultimate luxury begins here.

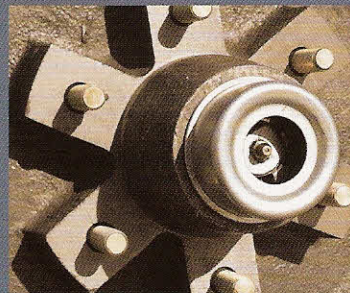


# US!

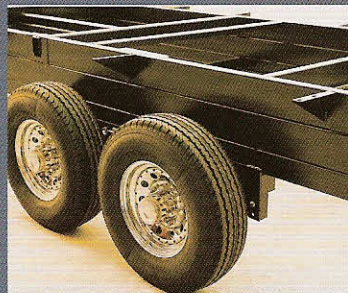
You'll find more and thicker aluminum posts, crossmembers and roof bows in a Titan unit. And Titan's Lite-Aluminum Superstructure is screwed and glued together, not welded. Welds can break with stress. Our bonded and screwed together framing is similar to airplane wing construction. Lighter and stronger!



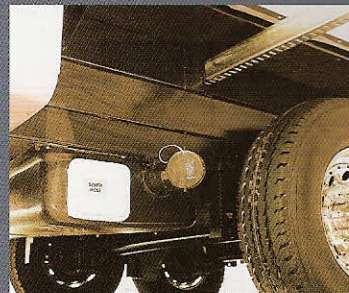
Holding tanks and valves are insulated. We even heat the valves so you'll have no worries in cold weather.



Dexter® EZ Lube axles and sealed bearings are maintenance free. Only quality components in a Titan.



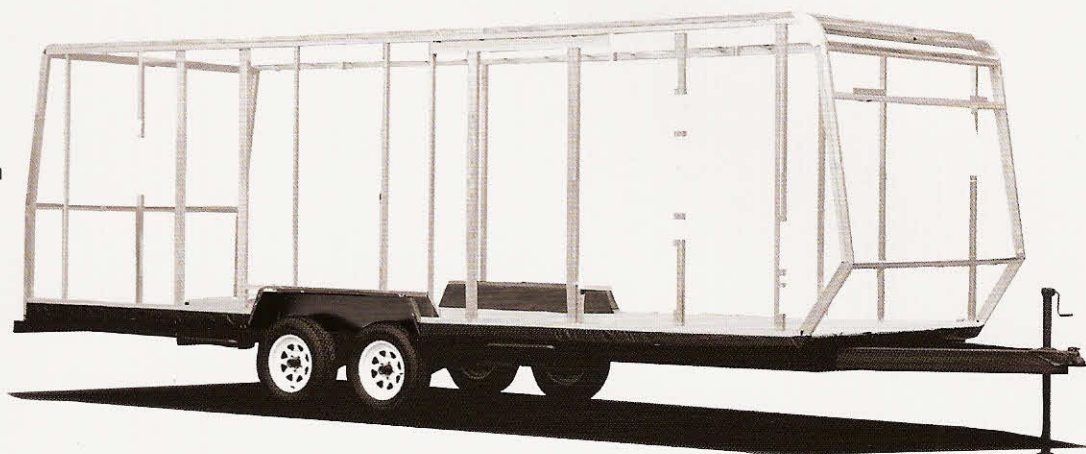
We start with a solid foundation. Fifth-wheel's central frame is 16" deep—strongest in the industry!



Dump valves are easy to access. Tanks are heated and also notice the enclosed underbelly.

# THEM.

Many of the competitor's brands use thinner posts, much less aluminum and even sidewalls glued to lauan. There is a difference. Look into this before you decide. SunnyBrook RV has always kept the standard high.



## CONSTRUCTION HIGHLIGHTS

- All Aluminum Bonded Superstructure
- 16" Triple-Stacked Tube Steel Chassis
- 12" Double-Stacked Tube Steel Chassis
- 5/8" Tongue-and-Groove Exterior Grade Plywood Floors
- Floor is Bonded and Screwed to Aluminum
- Floor Joists on 16" Centers
- Tapered Aluminum Truss-Type Roof Rafters on 16" Centers
- 1/2" Exterior-Grade Plywood Roof Decking
- Gel-Coat Fiberglass Sidewalls and End Caps
- L.E.D. Taillights and Clearance Lights
- Enclosed Under-bellies
- All Wheel Electric Brakes
- EZ Lube Axles
- MOR/ryde® RE Suspension



MOR/ryde® RE suspensions offer smoother and easier towing.



Roofs have R-12 insulation and sidewalls are R-8. We insulate your unit for better economy and value.



5/8" tongue-and-groove, exterior-grade plywood decking from Dyna Lock™ has a limited lifetime mfg's warranty.



Our all aluminum bonded structure features a unique ducting system integrated into the roof bows.



35 REKS in Calypso color and shown with optional fireplace.



33 CKTS in Serenity color.

Titan fifth-wheels are among the most luxurious available today. Elegant interiors are crafted with the finest hard woods, plush carpets and fabrics, and stylish amenities. And they're built to last. Our construction techniques, along with brand name components, mean your Titan unit will provide comfort and value for generations to come. Experience Titan's quality.





All Titans have std. pull-out pantry (applicable models)

User-friendly, intelligent standard features abound in a Titan. Our years of experience building quality RVs translate into one of the finest, most livable fifth-wheels available. Corian edged countertops, brand name appliances, high-end audio systems and more are waiting for you. For a complete list of features, see pages 14 and 15.



Optional water filter shown.



Convenient, hidden cutting board is standard.



Island kitchen floorplan layout is featured on select models.



34 BWKS in Blue Ridge color.

Elegant and comfortable bedrooms, and all rooms for that matter, are a Titan tradition. Large Queen sized (60"x80") beds assure a good night's sleep. Slide rooms, like the one shown below, allow for additional living space, just like home!



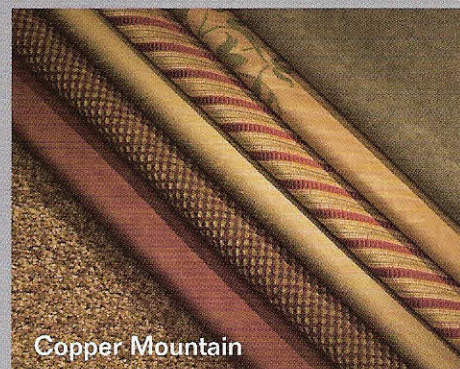
One-piece, fiberglass tub/shower upgrade.



Blue Ridge



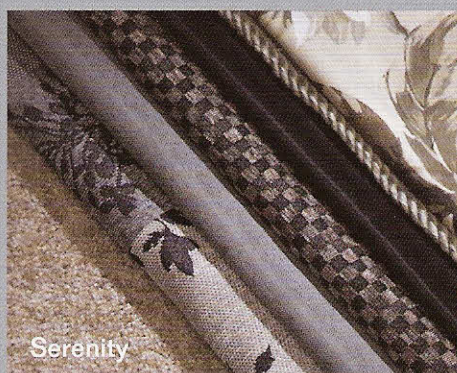
Cocoa Bay



Copper Mountain



Calypso



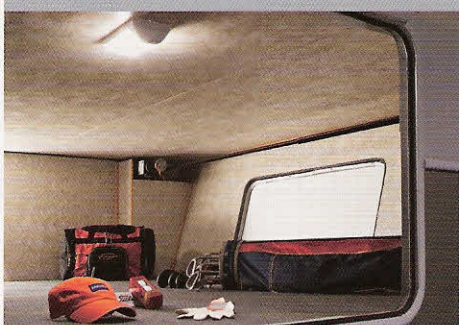
Serenity



Ceramic-look vinyl flooring

Wood-look vinyl flooring

Hand chosen by our experienced interior designers, these fabrics provide the texture and colors to please even our most discriminating customer. Higher quality materials and plush, contemporary styling let everyone know you have good taste.



Our fifth-wheels feature a fully furnished, extra large basement storage.



Our unique frame design allows for extra large storage compartments.



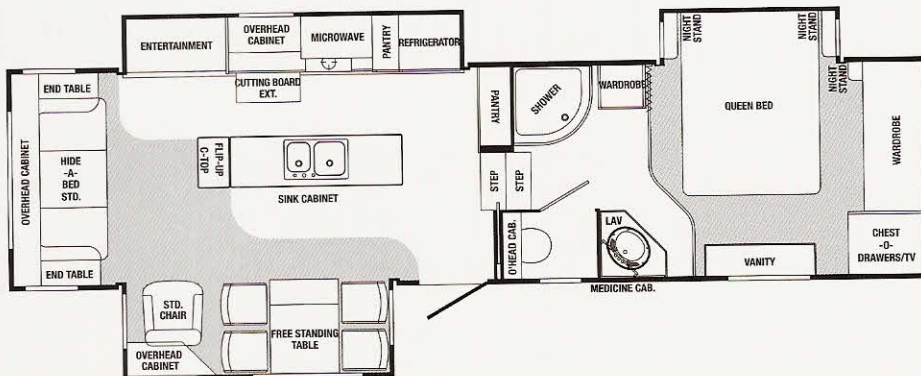
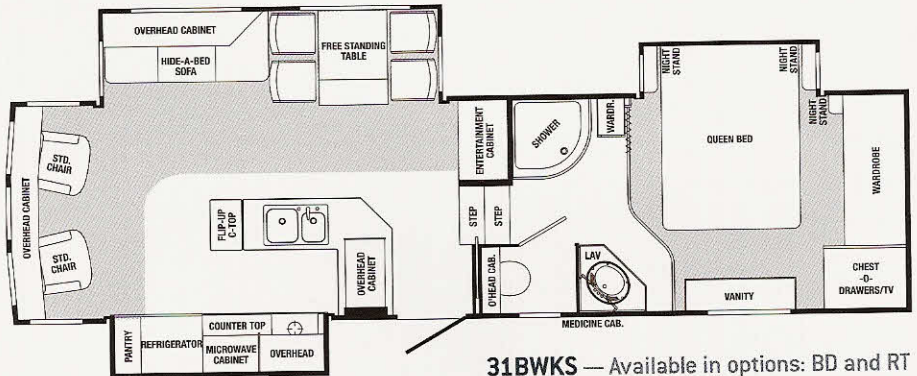
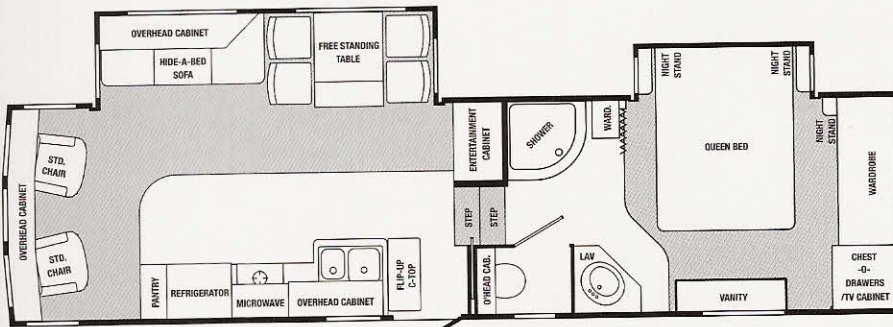
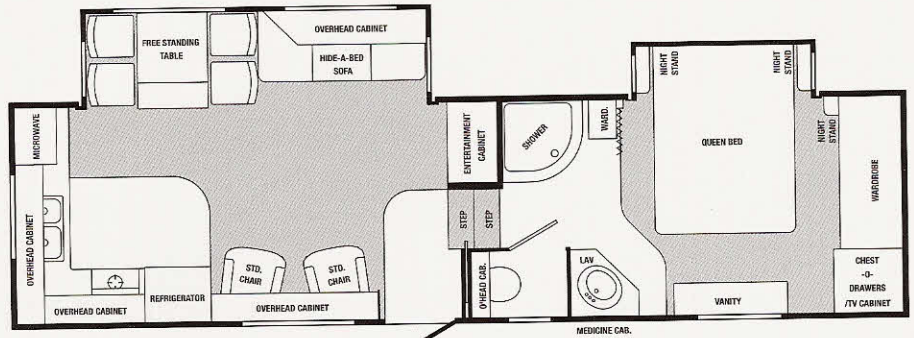
Message center swings away to reveal interior command center.

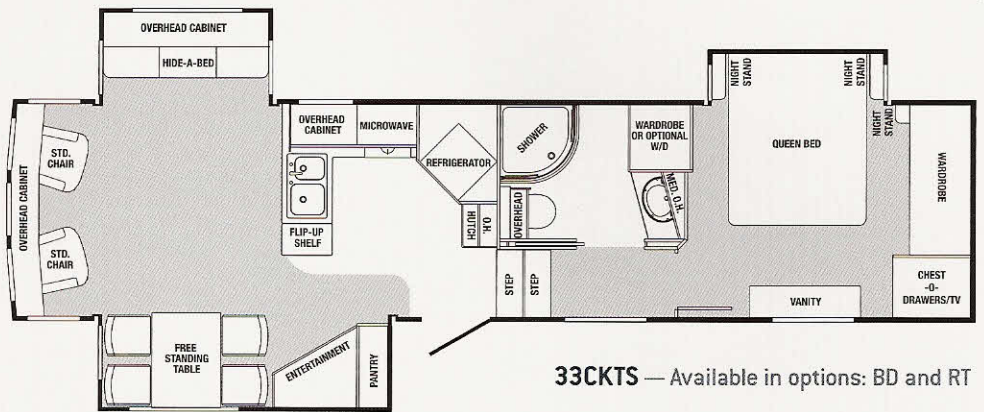


Titan provides one convenient location for hook-ups, dumping and controls.

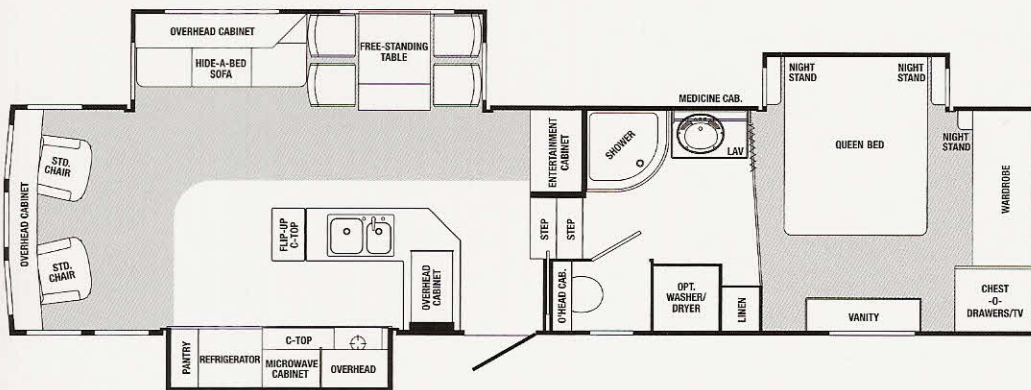


This lockable safe is inconspicuously secured under bed. Standard on all models.





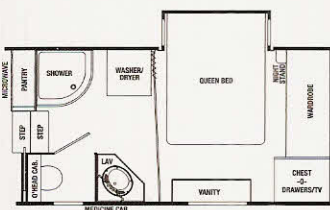
**33CKTS** — Available in options: BD and RT



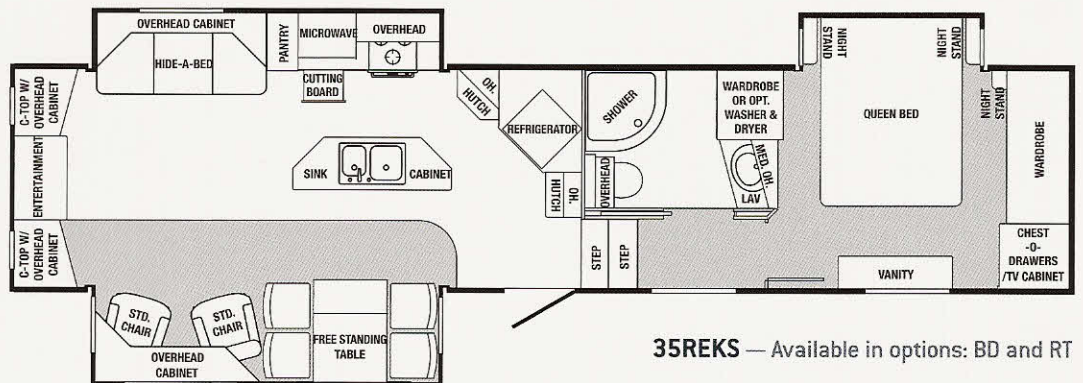
**34BWS** — Available in options: BD and RT



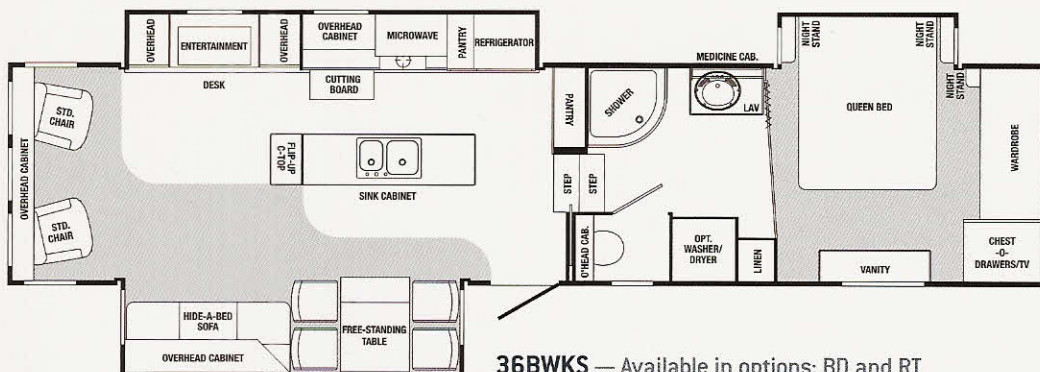
**WITH WASHER/DRYER OPTION**  
FOR THESE MODELS: 30RKFS,  
31BWS and 31BWS



**WITH WASHER/DRYER OPTION**  
FOR MODEL: 32BWS



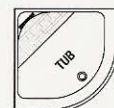
**35REKS** — Available in options: BD and RT



**36BWS** — Available in options: BD and RT



**OPTION BD**

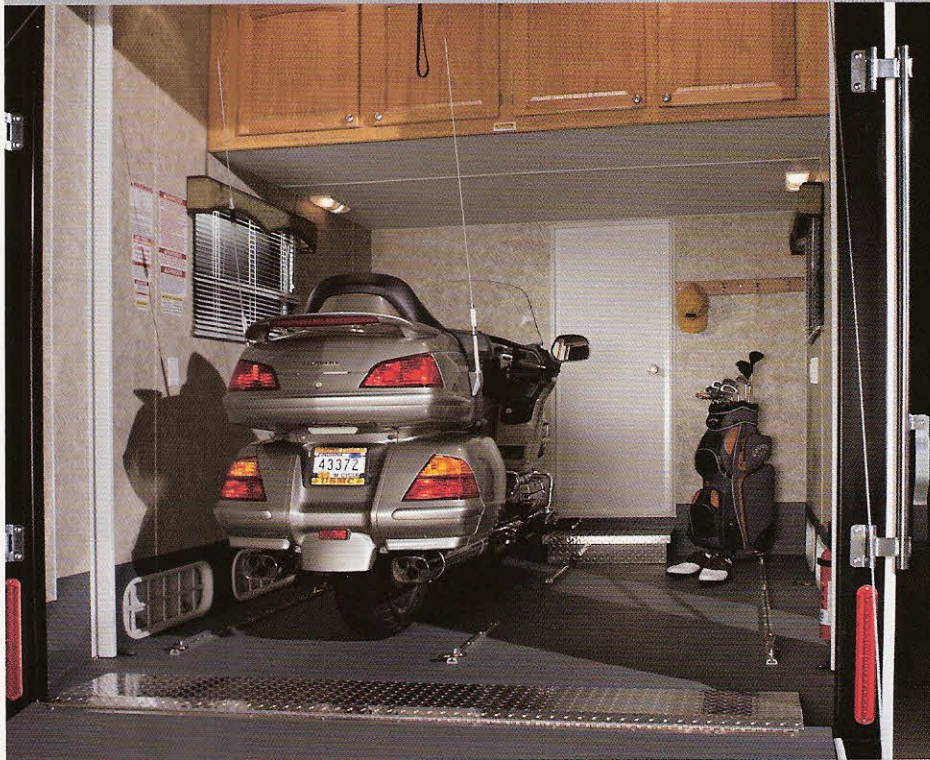


**OPTION RT**



The elegance of a Titan fifth-wheel, the practicality of a toy hauler.

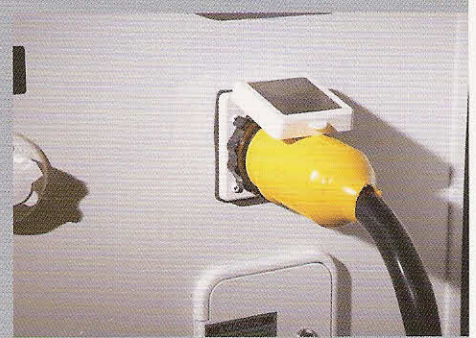
Luxurious Titan SURV models offer the same level of quality and styling as our standard line of Titan fifth-wheels yet give you the freedom to carry larger items along. The garage rooms, available in four distinct floorplans, range from 9 to 12 feet in length. They're large enough for hauling and securing most of your toys.



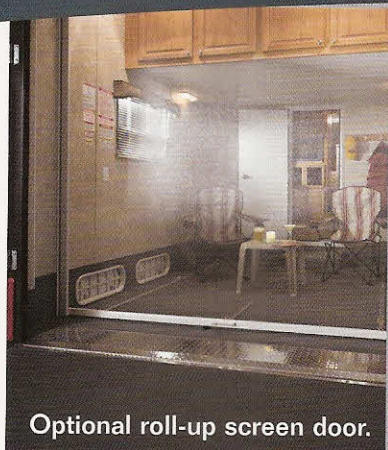
Like having a built-in, portable garage! Our SURV's feature a solid wall with entry door, overhead cabinet storage, spray-on bed liner floor, window(s) with blinds, and diamond plate trim all as standard features. The floor tie-down rails are optional.



A 30-gallon fuel reservoir with fill nozzle is a great option if you're hauling motorcycles or ATVs.



This standard 30 AMP marine-style power cord is removable and stores out of the way.



Optional roll-up screen door.



Bathroom with large shower.

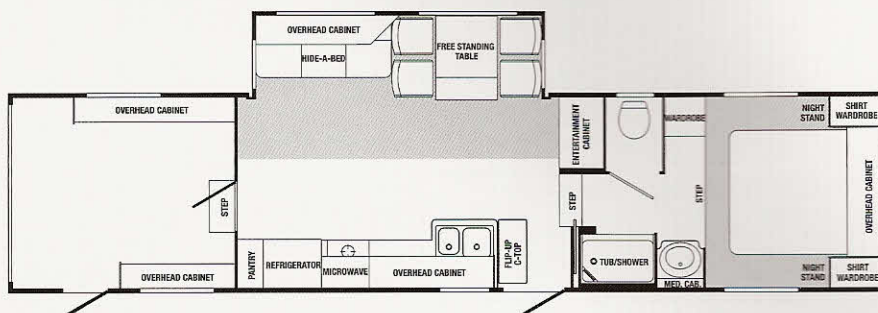


391SURV shown in Cocoa Bay

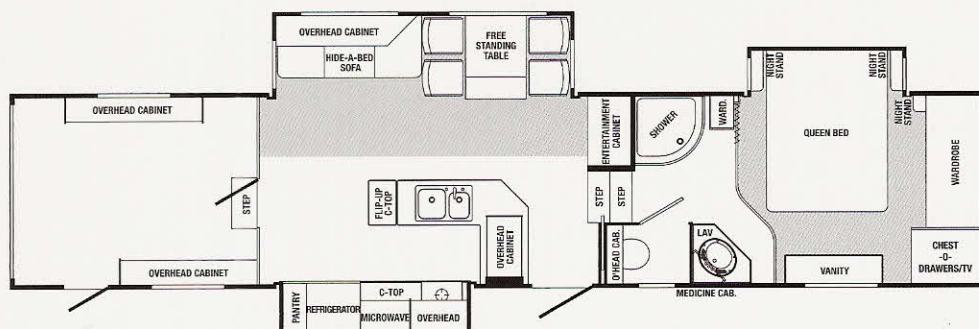
Release your adventurous spirit in an SURV. These units are highly refined, luxurious homes with a practical side. Interiors crafted of higher quality materials feature plush, contemporary styling. Floorplans are well designed and offer a bunk option for sleeping a larger family. You are sure to enjoy are brand name components and old-world craftsmanship. Have it all in a Titan SURV!



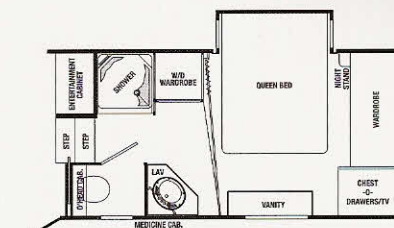
Optional loft adds a bunk room.



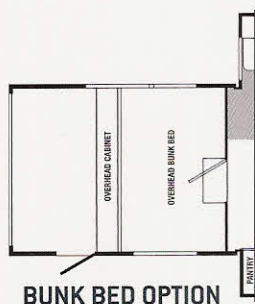
**349SURV** — Available in options : BD and Bunk



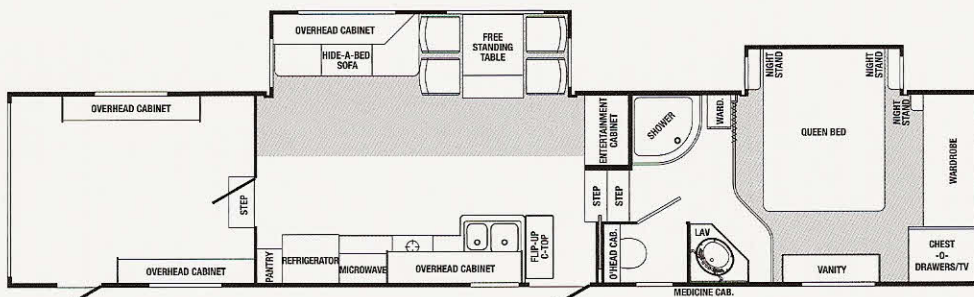
**391KSURV** — Available in options : BD, RT and Bunk



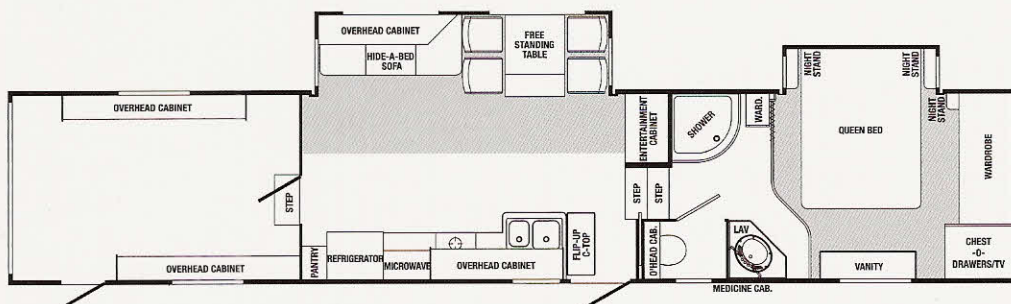
**WITH WASHER/DRYER OPTION**  
FOR 391SURV, 391KSURV and 412SURV



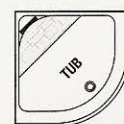
**BUNK BED OPTION**



**391SURV** — Available in options : BD, RT and Bunk



**412SURV** — Available in options : BD, RT and Bunk



**OPTION RT**



**OPTION BD**

## TITAN LX FIFTH-WHEEL SPECIFICATIONS

	30RKFS	31BWFS	31BWKS	32BWKS	33CKTS	34BWKS	35REKS	36BWKS
EXTERIOR LENGTH*	31'- 8"	32'- 6"	32'- 6"	33'- 4"	35'- 0"	36'- 0"	37'- 4"	37'- 4"
EXTERIOR HEIGHT**	12'- 10.25"	12'- 10.25"	12'- 10.25"	12'- 10.25"	12'- 10.25"	12'- 10.25"	12'- 10.25"	12'- 10.25"
EXTERIOR WIDTH	8'- 2.5"	8'- 2.5"	8'- 2.5"	8'- 2.5"	8'- 2.5"	8'- 2.5"	8'- 2.5"	8'- 2.5"
INTERIOR HEIGHT	7'- 5"	7'- 5"	7'- 5"	7'- 5"	7'- 5"	7'- 5"	7'- 5"	7'- 5"
DRY HITCH WEIGHT***	2380	2311	2298	2588	2419	2569	2555	2528
DRY GROSS WEIGHT***	10860	10898	11468	11788	12122	12122	12936	13151
GVWR	15000	15000	15000	15000	15000	15000	16000	16000
DUAL 6000 LBS.	Str. Axles	Str. Axles	Str. Axles	Str. Axles	Str. Axles	Str. Axles	Str. Axles (Triple)	Str. Axles (Triple)
TIRE SIZE	ST235/80R16E	ST235/80R16E	ST235/80R16D	ST235/80R16E	ST235/80R16E	ST235/80R16E	ST235/80R16E	ST235/80R16E
HITCH HEIGHT	48.5"	46"	46"	46"	46"	46"	48.5"	46"
AWNING SIZE	20'	16'	16'	16'	17'	18'	18'	16'
FURNACE SIZE	34M BTU	34M BTU	35M BTU	35M BTU	35M BTU	35M BTU	40M BTU	40M BTU
DOMETIC GAS/EL. REFER.	Dbl. Door	Dbl. Door	Dbl. Door	Dbl. Door	Dbl. Door	Dbl. Door	Dbl. Door	Dbl. Door
FRESH WATER CAPACITY	60	60	60	60	60	60	60	60
BLACK WATER TANK CAP.	50	50	50	50	50	50	50	50
GRAY WATER TANK CAP.	90	86	86	90	90	90	90	90
SLEEPING	4 (opt. 6)	4 (opt. 6)	4 (opt. 6)	4 (opt. 6)	4 (opt. 6)	4 (opt. 6)	4 (opt. 6)	4 (opt. 6)

## TITAN SURV SPECIFICATIONS

	349-SURV	391-KSURV	391-SURV	412-SURV
EXTERIOR LENGTH*	35'- 1"	39'- 7"	39'- 7"	41'- 7"
EXTERIOR HEIGHT**	12'- 10-1/4"	12'- 10-1/4"	12'- 10-1/4"	12'- 10-1/4"
EXTERIOR WIDTH	8'- 2.5"	8'- 2.5"	8'- 2.5"	8'- 2.5"
INTERIOR HEIGHT	7'- 5"	7'- 5"	7'- 5"	7'- 5"
GARAGE LENGTH	9'	10'	10'	12'
DRY HITCH WEIGHT***	2336	2613	2794	2985
DRY GROSS WEIGHT***	11925	13467	13192	13532
GVWR	18000	18000	18000	18000
AXLES 6000 LBS.	Str. Axles (Triple)	Str. Axles (Triple)	Str. Axles (Triple)	Str. Axles (Triple)
TIRE SIZE	ST235/80R16E	ST235/80R16E	ST235/80R16E	ST235/80R16E
HITCH HEIGHT	46"	48-1/2"	46"	46"
AWNING SIZE	16'	16'	19'	19'
FURNACE SIZE	35M BTU	34M BTU	35M BTU	35M BTU
DOMETIC GAS/EL. REFER.	Dbl. Door	Dbl. Door	Dbl. Door	Dbl. Door
FRESH WATER CAPACITY	60	60	100	100
BLACK WATER TANK CAP.	50	50	50	50
GRAY WATER TANK CAP.	90	90	90	90
SLEEPING	4 (opt. 8)	4 (opt. 8)	4 (opt. 8)	4 (opt. 8)

\* FW exterior lengths are measured from center of king pin to rear.

\*\* The exterior height includes air conditioner unit on roof.  
\*\*\* Does not include optional equipment.

† Extended pinbox available.

# STANDARD AND OPTIONAL FEATURES AND EQUIPMENT

## CONSTRUCTION

All Aluminum Bonded Superstructure	S
16" Triple Stacked Tube Steel Chassis	S
5/8" Tongue and Groove Exterior Grade Plywood Floors	S
Floor is Bonded and Screwed to Aluminum	
Floor Joists on 16" Centers	S
Tapered Aluminum Truss-Type Roof Rafters on 16" Centers	S
1/2" Exterior-Grade Plywood Roof Decking	S
R-8 Fiberglass Insulation in Side Walls	S
R-40 Fiberglass Insulation in Floor *	S
R-26 Fiberglass Insulation in Roof *	S
Fome-Cor® Insulation Board (Front & Rear Walls)	S
Extreme Weather Package (Increases R-Values)	O

## INTERIOR

Autumn Maple Cabinetry with Black Glaze	O
Congoleum® Deluxe Ceramic Tile Look Vinyl Flooring	S
Congoleum Wood Look Vinyl Flooring	O
Nylon Filament Carpeting with Rebond Padding (FHA Approved)	S
Solid Surface Edged Countertops	S
Corian® Countertop Upgrade for Kitchen and Bathroom	O
Cream Colored Day/Night Shades	S
Color Coordinated Day/Night Shades (N/A Kitchen & Bath)	O
Mini Blinds in Kitchen and Bathroom	S
Solid Oak Framed Cabinet Door and Drawer Fronts	S
Pocket Screwed Construction on all Cabinet Faces	S
Slide Rooms are 6'3" Interior Height	S
Heated Below Floor Water Tanks for More Inside Storage	S
Deluxe Lighting Upgrade Package (Florescent Lights Down Center of Unit and Stool Room, 4-1/2" Recessed Halogen Lights in Kitchen)	O
Steel Ball Bearing Full Extention Drawer Guides	S

## KITCHEN

Large Stainless Steel Look Acrylic Double Sink with Covers	S
Single-lever Faucet with Pull Out Sprayer on Kitchen Sink	S
Dometic® Large Double Door Refrigerator **	O
Dometic 12 cu/ft Side by Side Refrigerator (N/A 33CKTS)	O
Ice Maker (N/A in Units with Kitchen Slide)	O
Raised Oak Refrigerator Door Panels	S
Microwave Oven	S
Convection Microwave	O
Kitchen Countertop Extension (Select Models)	S
Three Burner Range and Oven with Piezo® Ignition	S
Water Filter at Kitchen Sink with Separate Faucet	O

Oak Table and 4 Chairs with Hidden Storage Compartments	S
Waste Basket	S
Roof Vent	S
Fantastic® Fan with Rain Sensor	O
Create-a-Breeze® Roof Vent (Kitchen or Bedroom)	O
Booth Dinette	O

## LIVING ROOM

Hide-a-Bed	S
End Table	O
Recliner (Swivel and Glider)	S
Ceiling Fan	S
Window Draperies with Decorative Tie Backs	S
Wallpaper Border	S
Leather Recliner Upgrade (Swivel and Glider)	O
Recessed Halogen Lights with Wall Switch in Slide Room	S

## BATHROOM

Acrylic Bathroom Lavatory Sink	S
Brushed Nickel Single-Lever Faucet on Lavatory Sink	S
Sealand® Porcelain Toilet with Sprayer Upgrade	S
Create-a-Breeze in Hallway and Stool Room	S
Skylight in Shower	S
One-piece Fiberglass Shower	S
Tub Option	O
Glass Shower Door	S
32" x 34" Shower on 30' and 31' FW with Queen Bedroom Slide, and Washer & Dryer	O
Congoleum Ceramic Tile Look Flooring	S

## BEDROOM

Bedroom Slide-out (60" x 80" Queen Bed w/ Night Stands)	S
California King Width Bed (72" x 80")	O
Deluxe Pillow Top Mattress	S
19" Color Television	S
Deluxe Curtains and Bedspread	S
Pillow Shams and Decorative Accent Pillow	S
Deluxe Headboard	S
Wall Sconces at Head of Bed	S
Gas Piston Assist Beds with Finished Storage	S
Edge Trimmed Bed Board	S
Lighted Under Bed Storage Compartment	S
Safe	S
Lighted Wardrobe (Select Models)	S
Shirt Wardrobes (Select Models)	S
Wall Switched Overhead Light	S
Fantastic Fan with Rain Sensor and Wall Switch	O
Create-a-Breeze Vent	O

## ENTERTAINMENT

TV Antenna with Power Booster	S
Surround Sound AM/FM Stereo with CD & DVD	S
Cable TV Hook-up and Telephone Jack	S
TV Outlets in Bedroom	S
TV Outlet in Basement	S
Pre-wired for Satellite to Off Door Side of Unit	S
Satellite Dish	O
27" Flat Screen Color Television	S

## SYSTEMS

AC/DC Power Converter with Charger	S
Floor-Ducted, Forced Air Furnace	S
Dual 30 lb Liquid Propane Tanks with Auto Change Over Regulator on Sliding Tray	S
Dual 40 lb Liquid Propane Tanks Upgrade	O
LP Quick Disconnect	S
Enclosed, Insulated and Heated Holding Tanks	S
Enclosed, Insulated and Heated Fresh Water Tanks	S
Atwood® 10 Gallon DSI Hot Water Heater	S
16 Gallon Effective Water Heater	O
Water Heater By-Pass System	S
Central Vacuum (Requires 50 AMP Service)	O
Dometic 15,000 BTU Ducted Air Conditioner **	O
Pre-Wire for 2nd Air Conditioner in Bedroom (Requires 50 AMP Electrical Service)	O
13.5 BTU Air Conditioner in Bedroom (Requires 50 AMP Electrical Service)	O
15.0 BTU Air Conditioner in Bedroom (Requires 50 AMP Electrical Service)	O
Heat Strip for Air Conditioner	O
Cool Air Diverter with All Air Conditioners	S
Washer / Dryer Prep or Installed (All FWs)	O
No-Fuss Flush for Black Tank	S
Generator Prep or Installed with Carbon Monoxide Detector	O
Electric Fireplace – Requires 50 Amp	O
30 AMP Electrical Service w/ Detachable Pwr Cord	S
50 AMP Electrical Service w/ Detachable Pwr Cord (Available on Most Models – Standard on 36')	O

## EXTERIOR

Gel-Coat Fiberglass Sidewalls and End Caps	S
Dead Bolt Locks on Entry Doors	S
Door Side Patio Light and Front & Roadside Setup Lights	S
Security Lights with Wall Switches (4 Corners)	S
30" Main Entry Door (Wheelchair Accessible)	S
Lights in Exterior Storage Compartments	S
Storage Slide Tray	O
Black Framed Radius Windows	S
White Framed Radius Doors (Entry and Baggage)	S

12 Volt Power Front Jacks	S
A&E® 8500 Series Awning **	O
A&E 9000 Series Awning with Metal Wrap	O
Outside Shower	O
Rear Window Stone Guard (Select Models)	O
Reinforced Rubber Roof	S
Ladder with 1/2" Plywood Roof Decking	S
Thermopane Windows	O
Safety Glass Windows	S
Deep Tint Windows	S
Aluminum Wheels Upgrade	O
Spare Tire and Carrier	S
Folding Assist Grab Handle	S
Extended Pin Box	O
MOR/ryde® RE Rubberized Medium Pin Box Upgrade	O
Mor/Ryde RE Rubberized Extended Pin Box Upgrade	O
King Combo Gooseneck Hitch Upgrade	O
L.E.D. Taillights and Clearance Lights	S
Enclosed Underbelly	S
Lighted Main Entry Steps	S
Lower Skirt Paint Upgrade	O
Custom Paint Package Upgrade	O
12 Volt Rear Stabilizer Jacks	O
12 Volt Power Awning	O

## SAFETY

16" Name Brand Radial Tires **	O
All Wheel Electric Brakes	S
Break-Away Switch	S
Smoke Detector	S
LP Leak Detector	S
GFI Electrical Circuit Protection	S
EZ Lube Axles **	O
Shock Absorbers	S
MOR/ryde RE Suspension	S

## GARAGE (SURV)

Custom Paint Package Upgrade	O
Diamond Plate Entry Step	S
Solid Wall Between Garage & Main Living Area	S
Spray-On Bed Liner on Floors, Sidewalls & Ramp	S
Mini Blinds on Windows	S
Overhead Cabinet Storage	S
Rear Roll-Up Screen Door	O
Cargo Tie Down Rails	O

\* With the Extreme Weather Package

\*\* Mandatory Option-Included in TITAN Consumer Package

Your authorized Titan dealer is:

*SunnyBrook*  
*Mobile Scout*

[www.sunnybrookrv.com](http://www.sunnybrookrv.com)  
(574) 825-5250  
201 14th Street  
Middlebury, IN 46540  
Printed in the USA  
© SunnyBrook RV, Inc  
Rev. 5/08

All illustrations and specifications contained in this literature are based on the latest product information available at the time of printing. SunnyBrook RV, Inc. reserves the right to make changes to colors, materials, specifications and pricing without notice or obligation. Photography may show optional equipment available at an additional cost. Items used as props in photography are not part of the packages. All liquid capacities and weights are approximate and dimensions are nominal. SunnyBrook RV reserves the right to make changes and improvements without incorporating these changes into similar models produced at an earlier date. Consult your local, authorized SunnyBrook or Mobile Scout Titan dealer for the latest information and/or changes. SunnyBrook RV is a member in good standing of the RVIA.