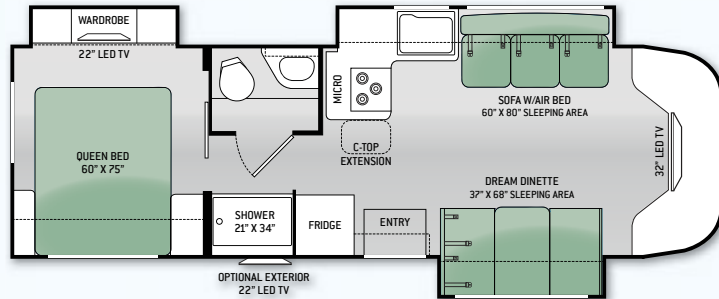


CITATION

29TB



BREEZY BLUE FULL BODY PAINT



RED VELVET HD-MAX™



PLUM CRAZY FULL BODY PAINT

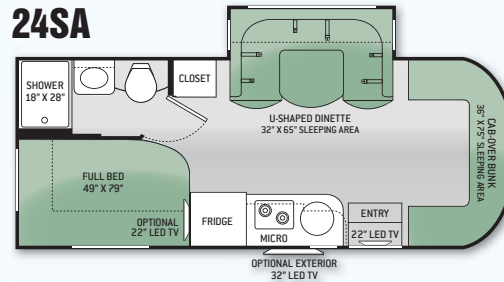


STARLIGHT HD-MAX™

FLOOR PLAN	29TB	24SA	24SL	24SR	24ST
Chassis	Ford	Sprinter	Sprinter	Sprinter	Sprinter
Gross Vehicle (GVWR)	14,500	11,030	11,030	11,030	11,030
Gross Combined (GCWR)	22,600	15,250	15,250	15,250	15,250
Wheel Base	220"	170.3"	170.3"	170.3"	170.3"
Exterior Length (w/o ladder)	31'-7"	24'-6"	24'-10"	24'-10"	25'-9"
Exterior Height (w/AC)	10'-10"	10'-10"	10'-10"	10'-10"	10'-10"
Exterior Width (w/o mirrors)	94"	90"	90"	90"	90"
Interior Height	80"	80"	80"	80"	80"
Awning Size	14'	14'-6"	13'	11'	11'
Fuel (gal)	55	26.4	26.4	26.4	26.4
LPG (lbs)	40.9	68.2	68.2	68.2	68.2
Fresh/Waste/Gray Water (gal)	40 / 25 / 23	40 / 38 / 38	40 / 38 / 38	40 / 38 / 38	42 / 22 / 24
Water Heater (gal)	6	6	6	6	6
Furnace (BTUs)	25,000	25,000	25,000	25,000	25,000
Exterior Storage Capacity (cu. ft.)	56.3	49.6	61	39	62.9

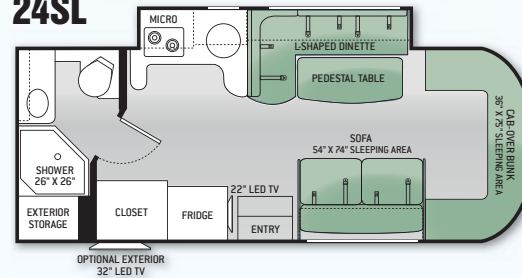
CITATION *SPRINTER*

24SA



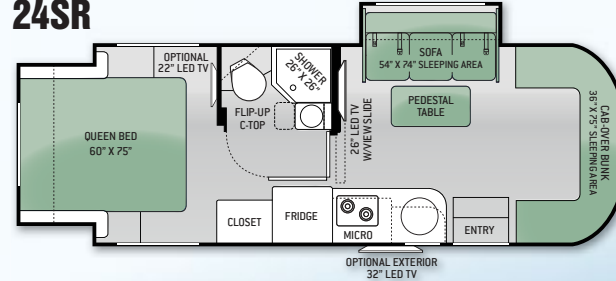
BREEZY BLUE FULL BODY PAINT

24SL



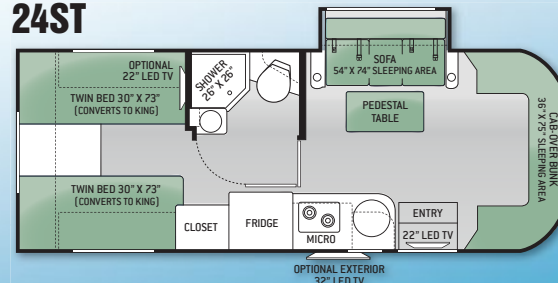
PLUM CRAZY FULL BODY PAINT

24SR



RED VELVET HD-MAX™

24ST



STARLIGHT HD-MAX™



CITATION

CONSTRUCTION & EXTERIOR

- One-Piece Fiberglass Front & Rear Caps
- HD-MAX™ Exterior with Graphics Package
- MEGA Storage™ Compartment
- Rotocast Storage Compartments
- Power Patio Awning with Integrated LED Lighting
- Roof Ladder
- Outside Shower

CONSTRUCTION & EXTERIOR OPTIONS

- Automatic Hydraulic Leveling Jacks
- Full Body Paint Package with Gel-Coat Sidewalls

AUTOMOTIVE & COCKPIT

- Touchscreen Dash Radio with CD Player & Back-up Monitor
- Heated/Remote Exterior Mirrors with Integrated Side View Cameras
- Wood Dash Applique
- Leatherette Captain's Chairs
- Fiberglass Running Boards
- Valve Stem Extenders
- 8,000-lb. Trailer Hitch with 7-pin Round Connector*

AUTOMOTIVE & COCKPIT OPTIONS

- Spare Tire Kit
- Power Driver's Seat

INTERIOR

- Residential Vinyl Flooring Throughout
- Leatherette Dream Dinette Booth
- Leatherette Sofa with Air Bed
- Night Shades

INTERIOR OPTION

- Single Child Safety Seat Tether

KITCHEN

- Double Door Refrigerator
- 3-Burner Gas Cooktop with Cover & Oven
- Over-the-Range Microwave Oven
- Solid Surface Kitchen, Sink Cover & Dinette Countertops
- Flip-up Countertop Extension

BEDROOM & BATHROOM

- Queen Size Deluxe Plush Mattress
- Shower with Glass Door
- Foot Flush Porcelain Toilet
- 12-volt Attic Fan in Bedroom*

ENTERTAINMENT

- Cab-Over Entertainment Center with 32" LED TV & DVD Player
- 22" LED TV in Bedroom
- Coach Radio System with Exterior Speakers
- Cable TV & Satellite Ready

ENTERTAINMENT OPTION

- Exterior 22" LED TV

ELECTRICAL & PLUMBING

- Cummins Onan® RV QG 4000 Gas Generator
- 30-amp Service with Shoreline Power Cord
- Automatic Shoreline-to-Generator Transfer Switch
- 13,500 BTU Low-Profile Air Conditioner
- Emergency Start Switch
- 6-gallon DSI Gas/Electric Water Heater
- Water Heater Bypass System
- Black Tank Flush System
- Systems Control Center

ELECTRICAL & PLUMBING OPTIONS

- 15,000 BTU Low-Profile Air Conditioner
- Second Auxiliary House Battery
- Holding Tanks with Heat Pads

*INCLUDED ON UNITS BUILT AFTER 10/1/14

CITATION SPRINTER

CONSTRUCTION & EXTERIOR

- HD-MAX™ Exterior with Graphics Package
- Side Hinged Slab Luggage Doors
- Rotocast Storage Compartments
- Power Patio Awning with Integrated LED Lighting
- Frameless Windows
- Roof Ladder (24SA, 24SL & 24ST Only)
- Outside Shower

CONSTRUCTION & EXTERIOR OPTION

- Full Body Paint Package with Gel-Coat Sidewalls

AUTOMOTIVE & COCKPIT

- Touchscreen Dash Radio with CD Player & Back-up Monitor
- Heated/Remote Exterior Mirrors
- Wood Dash Applique*
- Leatherette Captain's Chairs
- Fiberglass Running Boards
- 5,000-lb. Trailer Hitch
- Spare Tire

INTERIOR

- Residential Vinyl Flooring Throughout
- Electric Euro-Skylight
- Leatherette U-Shaped Dinette (24SA Only)
- Leatherette L-Shaped Dinette (24SL Only)
- Leatherette Sofa (24SL Only)
- Night Shades

INTERIOR OPTIONS

- Leatherette Sofa & Pedestal Table (STD 24SR & 24ST)
- Single Child Safety Tether (24SA & 24SL Only. N/A with Sofa Option.)

KITCHEN

- Double Door Refrigerator with Stainless Steel Door Inserts
- European 2-Burner Gas Cooktop with Glass Cover
- Convection Microwave Oven
- Solid Surface Kitchen & Dinette Countertops

BEDROOM & BATHROOM

- Full Size Denver Mattress™ Weekender (24SA)
- Queen Size Bed (24SR)
- Two (2) Twin Beds with Upholstered Covers (Converts to King Size Bed) (24ST)
- Foot Flush Porcelain Toilet

BEDROOM & BATHROOM OPTION

- 12-volt Attic Fan in Bedroom (24SR & 24ST)

ENTERTAINMENT

- 22" LED TV with DVD Player (24SA, 24SL & 24ST)
- Mid-Ship Entertainment Center with 26" LED TV on Always-in-View™ Slide System & DVD Player (24SR)
- Cable TV & Satellite Ready

ENTERTAINMENT OPTIONS

- 26" LED TV & Storage Cabinets in Cab-Over (24SA, 24SL & 24ST)
- Front Storage Cabinets in Cab-Over (24SR Only)
- 22" LED TV in Bedroom (24SA, 24SR & 24ST)
- Exterior 32" LED TV

ELECTRICAL & PLUMBING

- Cummins Onan® RV QG 3600 LP Generator
- 30-amp Service with Shoreline Power Cord
- Automatic Shoreline-to-Generator Transfer Switch
- 13,500 BTU Low-Profile Air Conditioner
- 6-gallon DSI Gas/Electric Water Heater
- Enclosed Heated Holding Tanks (24ST Only)
- Systems Control Center

ELECTRICAL & PLUMBING OPTIONS

- Cummins Onan® RV QD 3200 Diesel Generator
- Second Auxiliary House Battery
- Holding Tanks with Heat Pads (24SA, 24SL & 24SR)

*INCLUDED ON UNITS BUILT AFTER 10/1/14

ARABIAN SPICE



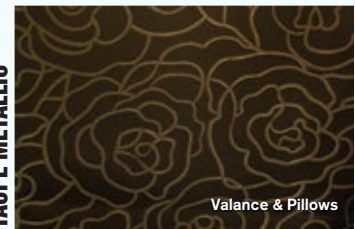
Valance & Pillows

DARK RUM



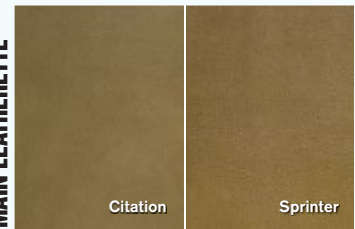
Valance & Pillows

TAUPE METALLIC



Valance & Pillows

MAIN LEATHERETTE



Citation

Sprinter

OLYMPIC CHERRY



SYDNEY MAPLE



OLYMPIC CHERRY
SPRINTER ONLY



SYDNEY MAPLE
SPRINTER ONLY



CITATION CITATION
SPRINTER



YOUR LOCAL TMC DEALER:



Go RVing.



P.O. Box 1486, Elkhart, Indiana 46515
Sales Department: 800.860.5658 • Customer Service: 877.855.2867

CITATION-MOTORHOME.COM • CITATION-SPRINTER.COM



IMPORTANT - PLEASE READ: This brochure reflects product design, fabrication, material, components and specifications at the date of printing, which date is disclosed on the last page. PLEASE VISIT US ONLINE AT THORMOTORCOACH.COM OR CONSULT WITH YOUR SELLING DEALERSHIP FOR THE LATEST IN STANDARDS, OPTIONS, SPECIFICATION AND TECHNICAL INFORMATION. Photographs in the brochure may depict optional equipment or may only be available in certain floor plans. Components, appliances and the chassis may have been manufactured in a calendar year before the vehicle's designated model year. All capacities are approximate. The actual length of the vehicle may differ from that indicated in the brochure due to variances in the manufacturing processes and/or installed components. All dry weights are based on standard model features and do not include optional features or equipment. Component part and appliance manufacturers issue limited warranties covering portions of the vehicle not covered under the limited warranty issue.