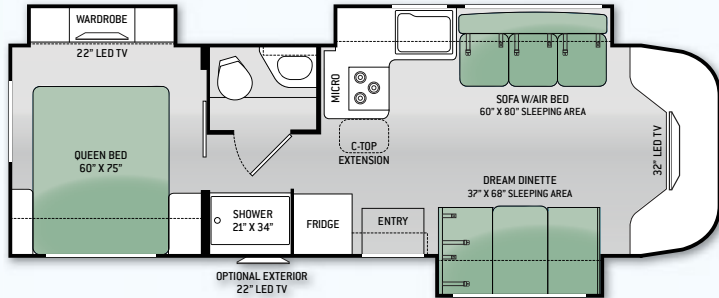


# SIESTA

## 29TB



COBALT BLUE FULL BODY PAINT



GOLDEN NUGGET HD-MAX™ **THOR**



FALL ESCAPEDE FULL BODY PAINT

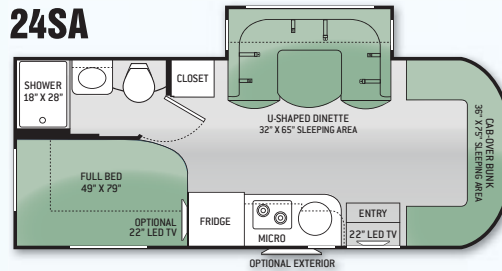


RIO RED HD-MAX™ **THOR**

FLOOR PLAN	29TB	24SA	24SL	24SR	24ST
Chassis	Ford	Sprinter	Sprinter	Sprinter	Sprinter
Gross Vehicle (GVWR)	14,500	11,030	11,030	11,030	11,030
Gross Combined (GCWR)	22,600	15,250	15,250	15,250	15,250
Wheel Base	220"	170.3"	170.3"	170.3"	170.3"
Exterior Length (w/o ladder)	31'-7"	24'-6"	24'-10"	24'-10"	25'-9"
Exterior Height (w/AC)	10'-10"	10'-10"	10'-10"	10'-10"	10'-10"
Exterior Width (w/o mirrors)	94"	90"	90"	90"	90"
Interior Height	80"	80"	80"	80"	80"
Awning Size	14'	14'-6"	13'	11'	11'
Fuel (gal)	55	26.4	26.4	26.4	26.4
LPG (lbs)	40.9	68.2	68.2	68.2	68.2
Fresh/Waste/Gray Water (gal)	40 / 25 / 23	40 / 38 / 38	40 / 38 / 38	40 / 38 / 38	42 / 22 / 24
Water Heater (gal)	6	6	6	6	6
Furnace (BTUs)	25,000	25,000	25,000	25,000	25,000
Exterior Storage Capacity (cu. ft.)	56.3	49.6	61	39	62.9

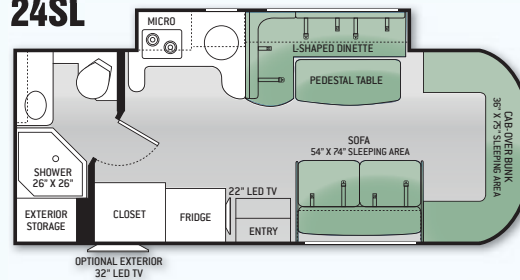
# SIESTA SPRINTER

## 24SA



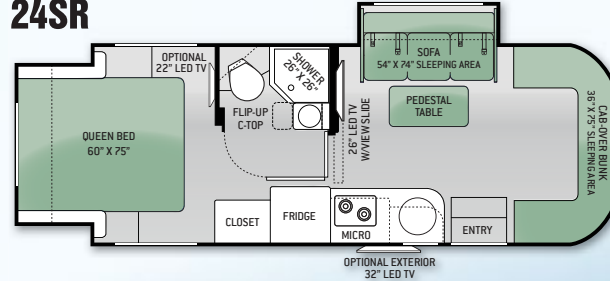
COBALT BLUE FULL BODY PAINT

## 24SL



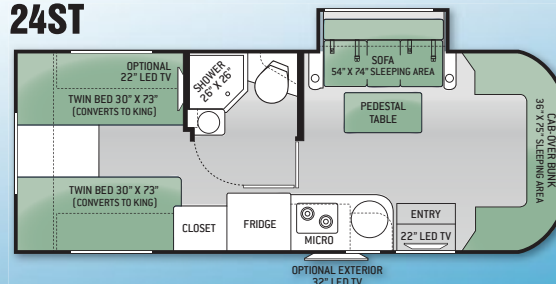
FALL ESCAPEDE FULL BODY PAINT

## 24SR



GOLDEN NUGGET HD-MAX™ **THOR**

## 24ST



RIO RED HD-MAX™ **THOR**



# SIESTA

## CONSTRUCTION & EXTERIOR

- One-Piece Fiberglass Front & Rear Caps
- HD-MAX™ Exterior with Graphics Package
- MEGA Storage™ Compartment
- Rotocast Storage Compartments
- Power Patio Awning with Integrated LED Lighting
- Roof Ladder
- Outside Shower

## CONSTRUCTION & EXTERIOR OPTIONS

- Automatic Hydraulic Leveling Jacks
- Full Body Paint Package with Gel-Coat Sidewalls

## AUTOMOTIVE & COCKPIT

- Touchscreen Dash Radio with CD Player & Back-up Monitor
- Heated/Remote Exterior Mirrors with Integrated Side View Cameras
- Wood Dash Applique
- Leatherette Captain's Chairs
- Fiberglass Running Boards
- Valve Stem Extenders
- 8,000-lb. Trailer Hitch with 7-pin Round Connector\*

## AUTOMOTIVE & COCKPIT OPTIONS

- Spare Tire Kit
- Power Driver's Seat

## INTERIOR

- Residential Vinyl Flooring Throughout
- Leatherette Dream Dinette Booth
- Leatherette Sofa with Air Bed
- Night Shades

## INTERIOR OPTION

- Single Child Safety Seat Tether

## KITCHEN

- Double Door Refrigerator
- 3-Burner Gas Cooktop with Cover & Oven
- Over-the-Range Microwave Oven
- Solid Surface Kitchen, Sink Cover & Dinette Countertops
- Flip-up Countertop Extension

## BEDROOM & BATHROOM

- Queen Size Deluxe Plush Mattress
- Shower with Glass Door
- Foot Flush Porcelain Toilet
- 12-volt Attic Fan in Bedroom\*

## ENTERTAINMENT

- Cab-Over Entertainment Center with 32" LED TV & DVD Player
- 22" LED TV in Bedroom
- Coach Radio System with Exterior Speakers
- Cable TV & Satellite Ready

## ENTERTAINMENT OPTION

- Exterior 22" LED TV

## ELECTRICAL & PLUMBING

- Cummins Onan® RV QG 4000 Gas Generator
- 30-amp Service with Shoreline Power Cord
- Automatic Shoreline-to-Generator Transfer Switch
- 13,500 BTU Low-Profile Air Conditioner
- Emergency Start Switch
- 6-gallon DSI Gas/Electric Water Heater
- Water Heater Bypass System
- Black Tank Flush System
- Systems Control Center

## ELECTRICAL & PLUMBING OPTIONS

- 15,000 BTU Low-Profile Air Conditioner
- Second Auxiliary House Battery
- Holding Tanks with Heat Pads

\*INCLUDED ON UNITS BUILT AFTER 10/1/14

# SIESTA SPRINTER

## CONSTRUCTION & EXTERIOR

- HD-MAX™ Exterior with Graphics Package
- Side Hinged Slab Luggage Doors
- Rotocast Storage Compartments
- Power Patio Awning with Integrated LED Lighting
- Frameless Windows
- Roof Ladder (24SA, 24SL & 24ST Only)
- Outside Shower

## CONSTRUCTION & EXTERIOR OPTION

- Full Body Paint Package with Gel-Coat Sidewalls

## AUTOMOTIVE & COCKPIT

- Touchscreen Dash Radio with CD Player & Back-up Monitor
- Heated/Remote Exterior Mirrors
- Wood Dash Applique\*
- Leatherette Captain's Chairs
- Fiberglass Running Boards
- 5,000-lb. Trailer Hitch
- Spare Tire

## INTERIOR

- Residential Vinyl Flooring Throughout
- Electric Euro-Skylight
- Leatherette U-Shaped Dinette (24SA Only)
- Leatherette L-Shaped Dinette (24SL Only)
- Leatherette Sofa (24SL Only)
- Night Shades

## INTERIOR OPTIONS

- Leatherette Sofa & Pedestal Table (STD 24SR & 24ST)
- Single Child Safety Tether (24SA & 24SL Only. N/A with Sofa Option.)

## KITCHEN

- Double Door Refrigerator with Stainless Steel Door Inserts
- European 2-Burner Gas Cooktop with Glass Cover
- Convection Microwave Oven
- Solid Surface Kitchen & Dinette Countertops

## BEDROOM & BATHROOM

- Full Size Denver Mattress™ Weekender (24SA)
- Queen Size Bed (24SR)
- Two (2) Twin Beds with Upholstered Covers (Converts to King Size Bed) (24ST)
- Foot Flush Porcelain Toilet

## BEDROOM & BATHROOM OPTION

- 12-volt Attic Fan in Bedroom (24SR & 24ST)

## ENTERTAINMENT

- 22" LED TV with DVD Player (24SA, 24SL & 24ST)
- Mid-Ship Entertainment Center with 26" LED TV on Always-in-View™ Slide System & DVD Player (24SR)
- Cable TV & Satellite Ready

## ENTERTAINMENT OPTIONS

- 26" LED TV & Storage Cabinets in Cab-Over (24SA, 24SL & 24ST)
- Front Storage Cabinets in Cab-Over (24SR Only)
- 22" LED TV in Bedroom (24SA, 24SR & 24ST)
- Exterior 32" LED TV

## ELECTRICAL & PLUMBING

- Cummins Onan® RV QG 3600 LP Generator
- 30-amp Service with Shoreline Power Cord
- Automatic Shoreline-to-Generator Transfer Switch
- 13,500 BTU Low-Profile Air Conditioner
- 6-gallon DSI Gas/Electric Water Heater
- Enclosed Heated Holding Tanks (24ST Only)
- Systems Control Center

## ELECTRICAL & PLUMBING OPTIONS

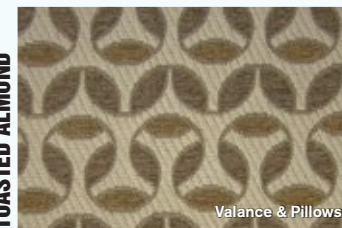
- Cummins Onan® RV QD 3200 Diesel Generator
- Second Auxiliary House Battery
- Holding Tanks with Heat Pads (24SA, 24SL & 24SR)

\*INCLUDED ON UNITS BUILT AFTER 10/1/14

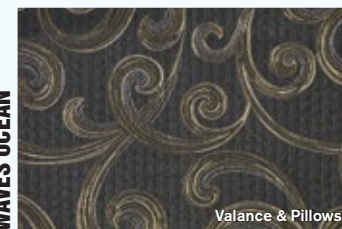
BRONZE COIN



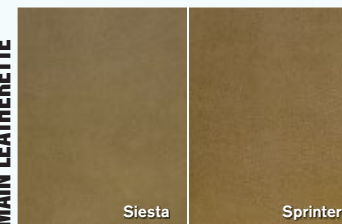
TOASTED ALMOND



WAVES OCEAN



MAIN LEATHERETTE



OLYMPIC CHERRY



SYDNEY MAPLE



OLYMPIC CHERRY  
SPRINTER ONLY



SYDNEY MAPLE  
SPRINTER ONLY



SIESTA

SIESTA  
SPRINTER



YOUR LOCAL TMC DEALER:



THOR  
MOTOR COACH  
Made to fit.

P.O. Box 1486, Elkhart, Indiana 46515  
Sales Department: 800.860.5658 • Customer Service: 877.855.2867

SIESTA-RV.COM • SIESTA-SPRINTER.COM



IMPORTANT - PLEASE READ: This brochure reflects product design, fabrication, material, components and specifications at the date of printing, which date is disclosed on the last page. PLEASE VISIT US ONLINE AT THORMOTORCOACH.COM OR CONSULT WITH YOUR SELLING DEALERSHIP FOR THE LATEST IN STANDARDS, OPTIONS, SPECIFICATION AND TECHNICAL INFORMATION. Photographs in the brochure may depict optional equipment or may only be available in certain floor plans. Components, appliances and the chassis may have been manufactured in a calendar year before the vehicle's designated model year. All capacities are approximate. The actual length of the vehicle may differ from that indicated in the brochure due to variances in the manufacturing processes and/or installed components. All dry weights are based on standard model features and do not include optional features or equipment. Component part and appliance manufacturers issue limited warranties covering portions of the vehicle not covered under the limited warranty we issue.

COPYRIGHT THOR MOTOR COACH, INC. © 8/22/14



Go RVing.