

WINDSPORT 07

Class A Motorhome



FW Four Winds
INTERNATIONAL



Shown with Ebony Reflection interior and Cherry cabinetry, with Infiniss™ Leather hide-a-bed sofa, driver and passenger captain's chairs and Euro recliner with ottoman.

Experience The

Now, you can experience a whole new way to travel with the Windsport Class A motorhome. It offers the perfect blend of world-class comfort and contemporary style.

With a choice of innovative floorplans, you'll find a model to meet your needs, tastes and lifestyle. Once you experience the Windsport, nothing else quite measures up. In comfort. In quality. And in value.

The Windsport offers a greater choice of upscale amenities to meet a wide range of lifestyle needs—from the casual to full-time recreational vehicle enthusiast. With a variety

of single, double and triple slide-out models available, you can choose the size and floorplan that is right for you.

All Windsport motorhomes are built to meet high quality standards—from the inside out. The cockpit area is designed for maximum driver and passenger comfort. It features an oversized AM/FM radio with large buttons, compact disc and cassette player with a weather band. A convenient computer hook-up (including a 110-volt outlet and phone jack), is located on the passenger side. A full 27" television is located in the front overhead with convenient storage cabinets on either side.



Shown with *Ebony Reflection* interior and *Cherry* cabinetry with *curio* cabinet (standard on Model 36E).

INTERIOR DECOR

Ebony Reflection

Janus Steel

Tandem Taupe

Standard Oak

Optional Maple

Optional Cherry

Possibilities

The sofa/dinette slide dramatically expands the entire living area so there is plenty of room to entertain guests. An elegant curio cabinet, (standard on Model 36E), offers extra storage and countertop space, and adds a touch of style to the living area.

Model 36R is new for 2007, and is a great motorhome for those who like to "live large." This spacious floorplan includes a round free-standing dinette, hide-a-bed sofa with recliner combination and an entertainment center in the living area with a full 32" LCD television.



Above: Shown with Ebony Reflection interior and Cherry cabinetry.

Right: The slide-out pantry offers plenty of handy storage. When closed, it holds all items securely in place—even when on the road.

Upscale Comfort... Practical Convenience

The spacious kitchen is fully equipped with name brand appliances and convenience features to meet your food planning and preparation needs. You can enjoy any kind of meal—from a quick snack or elegant meal—at the cozy dinette with vinyl backed cushions. When not in use, the dinette easily converts into a bed when extra sleeping accommodations are required.

Windsport motorhomes are available in models that sleep from four to eight people—with many unique features as well. For example, Model 35B is a triple slide-out floorplan that is truly a chef's delight.

The kitchen slide provides even more room to prepare your favorite meals. Plus, the handy roll-out countertop extension is perfect for additional food preparation space.

Model 36E offers dual zone living. Not only is there a comfortable sitting area in the front, but a second one is located in the bedroom when you want additional privacy. The bedroom sitting area has two cozy leather Euro recliners and convenient radio stand.





Above: Optional bedroom workstation with upholstered chair and one Euro recliner (Model 36E only), shown with Ebony Reflection interior and Cherry cabinetry.

Above right: Bedroom vanity with upholstered stool shown with Tandem Taupe interior and Maple cabinetry.

Right: Shown with Tandem Taupe interior and Maple cabinetry.

You can indulge yourself in gentle comfort after a full day of activities in the cozy bedroom. It features a queen-size bed with inner spring mattress that has a memory foam top for added sleeping comfort. The color-coordinated bedspread, pillow shams and headboard add a touch of style and elegance.

While relaxing in bed, you can enjoy watching television or turn on the sconce style wall lights to read your favorite book or magazine. The handy nightstands provide additional storage for small items. Day/night shades keep the room dark when you want to sleep and enhance your privacy.



The bath area offers all the conveniences of home. Standard features include a medicine cabinet with adjustable shelves, lavatory sink with decorative faucet and china bowl toilet. Model 36Z has a full bath in the bedroom and a half bath off of the living area.

Windsport Features

BODY CONSTRUCTION/ EXTERIOR

Standard

- ❑ 3" steel welded floor system
- ❑ Vacu-Bond laminated roof, walls and floors with high-density block foam insulation
- ❑ Fully welded tubular aluminum roof and sidewall cage construction
- ❑ One-piece fiberglass front and rear caps
- ❑ Exterior graphics package
- ❑ Air conditioning ductwork molded into roof insulation
- ❑ Heated and enclosed utility station with full hook-ups
- ❑ Fully automatic hydraulic leveling jacks
- ❑ Premium one-piece TPO roof—Energy Star approved and labeled
- ❑ Rubber tread entry steps
- ❑ Patio awning
- ❑ Roof ladder
- ❑ Exterior shower

Options

- ❑ Exterior partial paint package
- ❑ Slick fiberglass exterior
- ❑ Electric patio awning

AUTOMOTIVE/COCKPIT

Standard

- ❑ 5,000-lb. trailer hitch
- ❑ Dash fans
- ❑ Heated, remote exterior mirrors
- ❑ Passenger side work-station with computer hook-ups including a 110V outlet and phone jack
- ❑ Fog lights
- ❑ Back-up camera with audio

- ❑ Oversized AM/FM radio with large buttons, compact disc and cassette player, and weather band
- ❑ Generator start switch on dash
- ❑ 22.5" tires
- ❑ Aluminum wheels

Options

- ❑ Infiniss™ Leather driver and passenger captain's chairs
- ❑ Six-way power driver's seat

INTERIOR

Standard

- ❑ Full 84" interior ceiling height
- ❑ Residential linoleum (galley, bath and entry way)
- ❑ Two 13,500 BTU roof air conditioners
- ❑ Oak cabinetry
- ❑ Raised panel wall cabinet doors with hidden hinges
- ❑ Hardware with Brushed Nickel finish
- ❑ Day/night shades throughout
- ❑ Soft Touch vinyl ceiling
- ❑ Fabric hide-a-bed sofa
- ❑ Fabric hide-a-bed sofa and recliner combination (36R only)
- ❑ Fabric barrel chair
- ❑ Attractive curio cabinet with glass doors (36E only)
- ❑ Faux flat floor slide-out (sofa and dinette)

Options

- ❑ Cherry or Maple cabinetry
- ❑ Dual pane windows
- ❑ Fantastic® fan in kitchen
- ❑ Infiniss™ Leather hide-a-bed sofa

- ❑ Infiniss™ Leather hide-a-bed sofa and recliner combination (36R only)
- ❑ Fabric recliner in place of barrel chair
- ❑ Leather Euro recliner with ottoman in place of barrel chair
- ❑ Infiniss™ Leather recliner in place of barrel chair

GALLEY

Standard

- ❑ 8-cubic-foot double door refrigerator with raised panel inserts
- ❑ 3-burner high-output cooktop with oven
- ❑ Microwave oven
- ❑ Large Stainless Steel double bowl sink
- ❑ Slide-out pantry (not available with 12-cubic foot double door refrigerator)
- ❑ Full extension metal drawer guides
- ❑ Silverware tray
- ❑ Round free-standing dinette and four chairs (36R only)
- ❑ Booth dinette with cup holders (not available on 36R)
- ❑ Flip-up countertop extension (not available on 35B and 36R)
- ❑ Roll-out countertop extension (35B and 36R only)

Options

- ❑ 12-cubic foot side-by-side refrigerator with ice maker and raised panel inserts
- ❑ Convection microwave with 3-burner high-output range top
- ❑ Solid surface galley countertop

- ❑ Legless free-standing dinette with buffet and four chairs (36R only)

ENTERTAINMENT

Standard

- ❑ Cable television and satellite prep
- ❑ 27" television in front overhead
- ❑ 32" LCD television in living room entertainment center (36R only)
- ❑ 20" television in bedroom

Options

- ❑ Home theater system with DVD player and recessed ceiling speakers (standard on 36R)
- ❑ DVD player
- ❑ Satellite dish

BEDROOM/BATHROOM

Standard

- ❑ Queen size bed and innerspring mattress with memory foam top
- ❑ Bedspread and pillow shams
- ❑ Attractive headboard with sconce wall lighting
- ❑ Two leather Euro recliners (36E only)
- ❑ Glass shower doors
- ❑ China bowl toilet

Options

- ❑ Computer workstation in place of one Euro recliner (36E only)

SAFETY/CONVENIENCE

Standard

- ❑ Entry door with deadbolt lock
- ❑ Telephone jack
- ❑ Systems Control Center
- ❑ Smoke detector
- ❑ Fire extinguisher
- ❑ LPG detector

- ❑ Carbon monoxide detector
- ❑ Three-point seatbelts for the driver and passenger, and seatbelts throughout
- ❑ Washer/dryer prep (35B, 36R and 36Z only)

Options

- ❑ Washer/dryer combination (35B, 36R and 36Z only)
- ❑ Utility package: includes two-way radios and valve stem extenders
- ❑ Cental vacuum system

ELECTRICAL SYSTEMS

Standard

- ❑ Guardian RV Quietpack™ 55G generator (5500 watts)
- ❑ 50-amp service
- ❑ Marine-type detachable power cord
- ❑ 10-gallon gas/electric water heater
- ❑ Water heater bypass system
- ❑ Second auxiliary battery

Options

- ❑ Onan® RV Marquis Gold™ 5500 generator (5500 watts)
- ❑ Onan® RV Marquis Gold™ 7000 generator (7000 watts)

STORAGE AREAS

Standard

- ❑ Large pass-through roto-cast storage compartments
- ❑ Deluxe heavily insulated aluminum compartment doors
- ❑ In-floor slide system allowing for full height storage compartments
- ❑ Heated and enclosed roto-cast holding tanks

Specifications

MODEL	3 2 R	3 5 B	3 6 E	3 6 R	3 6 Z
WEIGHT RATING (LBS.)					
Ford Chassis 6.8L Triton (22.5" tires)	V10	V10	V10	V10	V10
Gross Vehicle (GVWR)	22,000	22,000	22,000	22,000	22,000
Gross Combined (GCWR)	26,000	26,000	26,000	26,000	26,000
MEASUREMENTS					
Wheel Base	208"	228"	235"	235"	235"
Exterior Length (without ladder)	33'2"	35'10"	37'	37'	37'
Exterior Height (with air conditioner)	12'11"	12'11"	12'11"	12'11"	12'11"
Interior Height	84"	84"	84"	84"	84"
Awning Size	17'	18'	18'	18'	18'
TANK CAPACITIES					
Fuel (gallons)	75	75	75	75	75
LPG (pounds)	96	96	96	96	96
Fresh Water (gallons)	60	60	60	60	60
Waste Water (gallons)	55	48	48	48	48
Gray Water (gallons)	56	49	49	49	49
Water Heater (gallons)	10	10	10	10	10
Furnace	35,000	35,000	35,000	35,000	35,000

Exterior Choices



Sahara exterior paint option

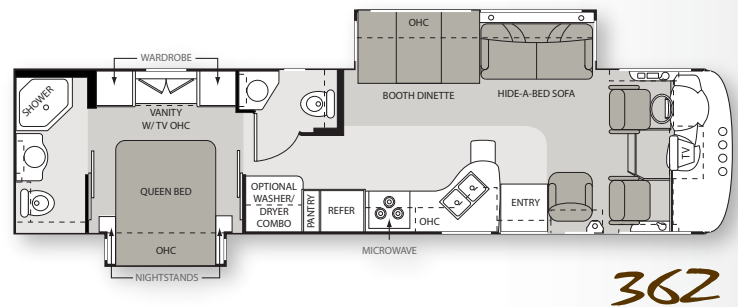
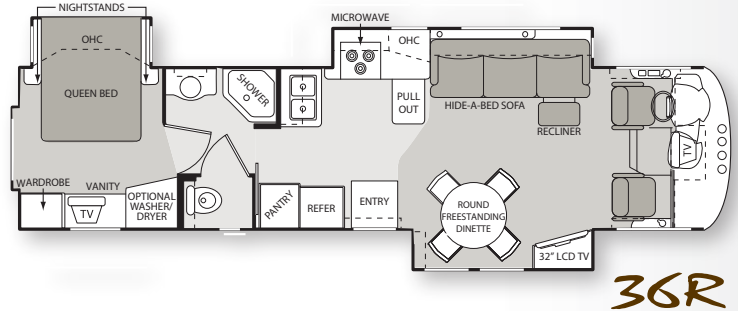
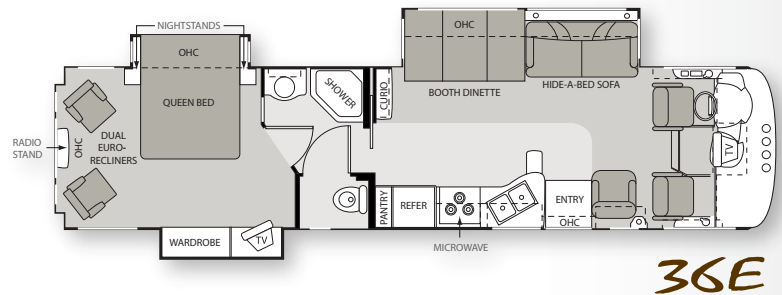
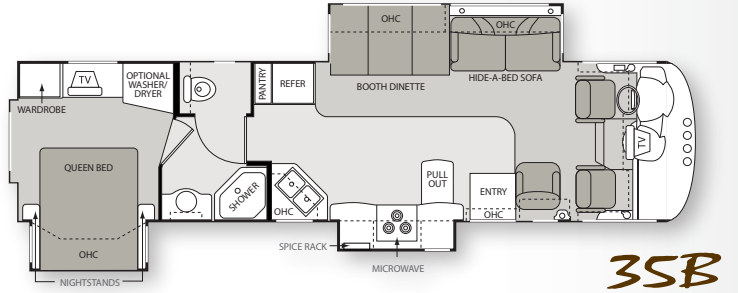
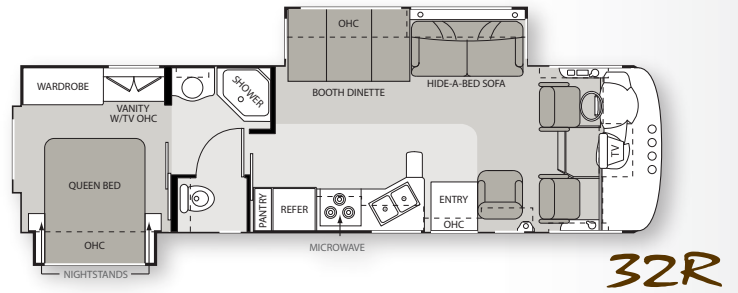


Taupe Mist exterior paint option



Standard graphics exterior

Floorplans



Carpet Linoleum

THE FOUR WINDS INTERNATIONAL QUALITY DIFFERENCE

What sets Four Winds International apart from other manufacturers? It's a better level of quality built in each motorhome from the inside out. It's exceptional value that is integrated into each design. It's a dedication to innovation that allows us to continually improve our motorhomes. Our ultimate goal is to build the right combination of quality, functionality and durability so you get many years of enjoyment from your new motorhome. It's a commitment we take seriously, and one on which you can depend.



**3-Year/
45,000
Mile
Limited
Structural
Warranty**

THE DIFFERENCE IS CLEAR

At Four Winds International (FWI), we strive to go beyond your expectations with every motorhome we build. By doing so, you will be able to enjoy a better quality of life while on the road.

All FWI motorhomes come with a full one-year, 15,000 mile bumper-to-bumper warranty, as well as a three-year, 45,000-mile limited

structural warranty. Our nationwide dealer network is fully equipped and trained to meet your service needs. The FWI support staff has many years of experience, and is available to provide assistance on all technical, service and warranty issues. For complete warranty details, contact your Four Winds International dealer.

FWI is proud to offer high-quality products and support services that result in customer satisfaction—one customer at a time. So whether you are a first-time recreational vehicle owner, or an experienced one, we're confident that you'll enjoy years of adventures in your new motorhome. This is the Four Winds International difference.

VEHICLE LOADING

Every effort has been made to provide the greatest number of options for the recreation vehicle owner. Along with these choices comes the responsibility to manage the loads that are imposed by the choices so that they remain within the manufacturer's specified chassis weight limits. Do not overload the recreation vehicle.

DRY WEIGHTS

Based on standard features; optional equipment not included. Net carrying capacity (NCC) determined by subtracting unloaded vehicle weight (UVW) from gross vehicle weight, (GVWR) and includes fluids, options, and cargo. Liquid capacities and weights are approximations only.

Product information, specifications, and photography in this brochure were as accurate as possible at time of printing. Photographs may contain some features that are optional on your vehicle. Since we continually strive to improve our products, actual products may differ. Prices and specifications are subject to change without notice. All capacities are approximate and dimensions are nominal. Some features or options may be different or unavailable in Canada.

WARNING

This information is intended as a guide only. Weights of individual vehicles may vary. Consult your owner's manual for complete loading, weighing, and towing instructions.

IMPORTANT

Towing capacity may vary by chassis model, floorplan, options and loading of the vehicle. This may result in a towing capacity which is less than the maximum capacity of the hitch. Do not exceed the vehicle's Gross Combined Weight Rating (GCWR), or the hitch rating. A separate functioning brake system is required for any towed vehicle or trailer weighing more than 1,000 lbs. (450 KG) when fully loaded.

WHY THOR IS YOUR BEST RV VALUE

Thor Industries, Inc., listed on the New York Stock Exchange (THO), proudly traces its history back over 70 years to the pioneering days of the recreational vehicle industry with the founding of Airstream, the industry's oldest and most renowned brand. Our total commitment to quality and our philosophy of putting our customers first has led to our continuous growth.

Today, Thor is the largest builder of recreational vehicles. Thor's strong financial condition and years of solid growth are your assurance that we will be here to serve you for years to come. We think this extra peace of mind is important when you are making a significant investment. Because our customers are always #1 with us, we work harder than other manufacturers to satisfy you.

FW
Four Winds
INTERNATIONAL

P.O. Box 1486 • Elkhart, Indiana 46515-1486

Phone: 574-266-1111 • Fax: 574-294-8971

www.fourwinds-rv.com



© 2006 Four Winds International Litho USA 1006-20M