

The HWH hydraulic flush floor slideout gives the elegant and spacious living area an almost seamless surface. By day, the sofa and ultra leather chairs offer exceptional comfort for you to enjoy the 32" LCD TV and home theater system. By night, the hide-a-bed boasts an air coil mattress to make guests feel like part of the family.



Pictures on this page are of the A371Q in Encore Décor.



With its decorative bedspread and throw pillows, the 60" x 80" residential queen size bed creates a bedroom fit for royalty. The bedroom features full hanging wardrobe with full-length dressing mirrors, directional overhead lighting above the padded headboard for reading and ample overhead storage, not to mention a 19" LCD TV.



Seasoned Explorer

Experience pure joy on the open road in the 2009 Signature, the latest addition to the Triple E motorhome family. This eye-popping 37-foot diesel pusher is dressed to the nines and features two slides or four to suit your lifestyle. Truly a home for all seasons, the Signature's climate controlled thermal pane windows and winter-friendly construction will keep you snug as a bug no matter where or when you go. So no matter which direction your heart and your compass point you, the Signature will be your dependable and stylish companion year round.

STANDARDS AND OPTIONS

	A371Q	A372D
CHASSIS AND SUSPENSION		
Air Brakes - c/w Slack Adjusters	S	S
Air Suspension - c/w Sachs Tuned Shock Absorbers	S	S
Alternator - 160 Amp	S	S
Block Heater (1000 W)	S	S
Chassis - Freightliner XC - Cummins 6.7L ISB 340 HP / 660 Ft Lb Turbo Diesel Raised Rail Rear Radiator w/ Exhaust Brake	S	S
Clutched Radiator Fan	S	S
Driveline Upgrade - Cummins 6.7L ISB 350 HP / 750 Ft Lbs Torque and Allison 3000 MH Transmission	0	0
Fuel Fill - Concealed Locking Fuel Fill Access On Both Sides	S	S
Hitch - Trailer Hitch Receiver w/ Wiring and Plug - 1000lb/10,000 lb.	S	S
Tires - Radial -- 255/80R22.5 w/ Wheel Simulators	S	S
Transmission - Allison 2500MH Series Six Speed Automatic c/w Lock Up & Transmission Cooler	S	S
DRIVERS AREA CONVENIENCES		
Blinds - Side Driver & Passenger Roller Blinds	0	0
Cameras - Side Turn Cameras	0	0
Cover - Flip Down Front Step Cover	S	S
09 Cover - Hydraulic Powered Front Step Cover w/ Driver and Passenger Controls (Pre Production Only)	0	0
Cruise Control	S	S
Dash Air and Heat - Dual Blower in Steel Cage	S	S
Fan - Overhead Blower Above Windshield	S	S
Mirrors - Front Mounted Heated Remote Power Mirrors	S	S
Rearview Camera w/ Monitor Mounted in Dash	S	S
Seat - Ultra Leather / Ultra Trim Swivel Driver Captain Chair - 6 Way Power w/ Infinity Adjustable Arms	S	S
Seat - Ultra Leather / Ultra Trim Swivel Passenger w/ Manual Foot Rest w/ Infinity Adjustable Arms	S	S
Steering Wheel - Tilt Telescopic	S	S
Sun Visor - Driver and Passenger Sun Visors	S	S
09 Sun Visor - Power Driver and Passenger Sun Visor w/ Switch on Dash	0	0
Switch - Battery Boost (Chassis to Coach Batteries)	S	S
Switch - Battery Selector for Radio	S	S
Transmission Temperature Gauge	S	S
Wipers - Wet Arm 32" Windshield Wipers c/w Intermittent Function	S	S
VEHICULAR		
09 Air Horns	0	0
Bumpers - Integrated Fiberglass - Steel Reinforced	S	S
Headlights - Styled with Halogen Bulbs	S	S
Jacks - HWH "One Touch" Automatic Leveling System w/ Dash Mounted Air Dump Switch	S	S
Light - High Mount Spotlight -- LED Long Life	S	S
Lights - Exterior Clearance Lights	S	S
Lights - Halogen Automotive Driving Lights	S	S
Rust Protection	0	0
Undercoating - Automotive Type	S	S
CONSTRUCTION		
Baggage Doors - Aluminum Baggage Doors c/w Gas Struts and Slam Latches	S	S
Baggage Doors - Slide Swing Aluminum Baggage Doors c/w Gas Struts and Slam Latches Under Curbside Slideout	S	-
Fiberglass Molded Front & Rear Mask	S	S
GelCoat Vetrolite Fiberglass Sidewalls	S	S

09 New for 2009 S Standard 0 tion

CONSTRUCTION (con't)		
Lined and Lit Baggage Compartments	S	S
Roof - Domed Kemlite FRP Flexroof	S	S
Steel Cab Floor, Firewall and Dash Structure	S	S
Vacuum Bonded Aluminum Framed Insulated Roof Construction	S	S
Vacuum Bonded Aluminum Framed Insulated Sidewall Construction with Thermal Break	S	S
Vacuum Bonded Steel Framed Insulated Floor Construction	S	S
Windows - Tinted Radius Corner Thermal Pane Windows	S	S
EXTERIOR		
Diamondshield® Paint Protection Film on Front End	0	0
Door - Screened Entry Door with Deadbolt Lock	S	S
Handle - Entry Door Assist Handle (Interior Mounted)	S	S
Handle - Exterior Assist - Monogrammed	S	S
Ladder - Exterior Ladder c/w Detachable Lower Section	S	S
Lights - Docking Lamps (2 each Side)	S	S
Paint - Full Body Exterior Paint with Clear Coat	S	S
09 Quick Draw pull-out storage tray - Forward Bay (2/3 length)	0	0
09 Quick Draw pull-out storage tray - Rearward Bay	0	0
Step - Exterior Electric Retractable Entry Step	S	S
Windshield - One Piece	S	S
INTERIOR		
84" Interior Ceiling Height w/ Padded Vinyl Headliner	S	S
Adjustable Shelves in Washer/Dryer Cabinet	S	S
09 Cabinet Doors - Contemporary Styled Solid Cherry Wood Cabinet doors	S	S
Covers - Insulated Vent Covers	0	0
Detectors - Electronic Smoke, LP and CO	S	S
Drawers - Full Extension Ball Bearing Drawer Tracks w/ Snap Latches	S	S
Flooring - Carpet w/ Underlay in Living and Bedroom Areas	S	S
Flooring - Porcelain Tile Flooring in Galley, and Bath as per floorplan	0	0
Flooring - Tile Look High Pressure Laminate Flooring in Galley, and Bath as per floorplan	S	S
Keylock Safe Box	0	0
Latches - Snap Latches on all Cabinet Doors	S	S
Lighting - Courtesy Floor Lamps	S	S
Lighting - Fluorescent Aisle Lighting	S	S
Pillows - Color coordinated pillows in Living Area	S	S
Shades - Day/Night Pleated in Living Area	S	S
Slide Out - Electric Bed Slide Out on Driver Side	S	S
Slide Out - Electric Slide - Dresser and Drawers	S	-
Slide Out - Flush Floor HWH Hydraulic System in Living Area	S	S
Slide Out - HWH Hydraulic Galley Slide on Passenger side	S	-
FURNITURE		
Booth Dinette w/ Slide Out Drawers and Wall Mount Solid Wood Table (Hutch Deleted)	0	0
Hide-A-Bed - Ultra Leather / Ultra Trim on Driver Side w/ Air Coil Mattress	S	S
Love Seat - Ultra Leather / Ultra Trim on Passenger Side (ILO Recliner on the A372D)	S	0
Recliner - Ultra Leather / Ultra Trim Recliner w/ Solid Wood Flip Table	-	S
Table - Solid Wood Extendable Cantilevered Wall Mount Table w/ Hutch c/w 2 Solid Wood Chairs and 2 Folding Chairs	S	S

STANDARDS AND OPTIONS

GALLEY		
Backsplash - Solid Surface Backsplash in Galley	S	S
Cook Top - Recessed Cook Top c/w High Output Burner and Solid Surface Recessed Bi-fold Range Cover	S	S
Countertop - Solid Surface Countertop c/w Matching Cutting Board Sink Covers and Stainless Steel Sink	S	S
Faucets - Deluxe Single Lever Faucet w/ Sprayer	S	S
Micro/Convection Oven - Black Finish (OTR) c/w 110V Range Hood and Light	S	S
Oven - 21" LP Glass Door Oven	0	0
09 Refrigerator - 4 Door 12 cu. Ft. c/w Ice Maker - LP/Electric, Cherry Finished Framed Raised Panel Inserts w/ Ignition Lock	0	0
09 Refrigerator - Dometic LP/Electric 9 Cu. Ft. w/ Temp Control, w/ Cherry Finished Framed Raised Panel Inserts	S	S
LAVATORY		
Countertop - Solid Surface Counter and Basin	S	S
Shower - Fiberglass Enclosed Shower w/ Glass Shower Door	S	S
Skylight - Residential Dual Pane in Shower Compartment	S	S
Toilet - Sealand Traveller Light - China - with Sprayer	S	S
Window - w/ Valance and Venetian Blind in Toilet Room	S	S
BEDROOM		
Bedspread - Decorative Bedspread c/w Throw Pillows	S	S
Lighting - Fluorescent Lighting in Bedroom	S	S
Mattress - Residential Quality	S	S
09 Mattress - Residential Quality King (70" x 80") Deluxe Pillow Top	0	0
Mattress Upgrade	0	0
09 Pillows - 2 Sleeping Pillows in Bedroom	S	S
Shades - Day/Night Pleated w/ Blackout	S	S
ENTERTAINMENT		
CB Antenna - includes Labeled Coax Lead in under Dash	0	0
09 GPS Touch Screen Navigation System c/w CD w/ Sirius Satellite Prewire and Antenna (subscription not included), (N/A with 10 Stack CD Changer Option)	0	0
Master Control - Deluxe Audio/Video Master Control Switch Box w/ RCA Cables	S	S
Prewire - Satellite Dish Prewire (with 12V Power and Motosat Cable)	S	S
Radio Monopex System - Switching for Rear Bedroom Speakers	S	S
Satellite Dish - Explorer Dish for Star Choice - Automatic Acquisition	0	0
Satellite Dish - Motosat 18" Executive w/ DVB Automatic Acquisition and Identification	0	0
Satellite Dish - Winegard with Electronic Elevation Sensor	0	0
Satellite Radio Prewire - including Satellite Antenna (Subscription not Included)	0	0
Stereo - AM/FM/CD/MP3 Sirius Ready Player in Dash w/ Wireless Remote and Auxiliary Input	S	S
Stereo - Home Theater System - 5 Channel Stereo with Subwoofer	S	S
Telephone & Cable TV Hook-up - Exterior	S	S
TV - AC 19" LCD Color Stereo TV c/w Remote in Bedroom	S	S
09 TV - AC 32" LCD Widescreen TV c/w Remote in Front Overhead Cabinet	S	S
TV Antenna - Roof Top Retractable Antenna c/w Booster	S	S
HEATING VENTILATING AND AIR CONDITIONING		
Air Conditioner - Dual (2) Centrally Ducted 13,500 BTU w/ Heat Strip and Remote Return Air	S	S
Fan - Fantastic Non Reversible Thermostatically Controlled in Lavatory w/ Wall Switch	S	S
Fan - Fantastic Non Reversible Thermostatically Controlled in Toilet Room w/ Wall Switch	S	S
Fan - Reversible Thermostatically Controlled Fantastic Fan in Bedroom w/ Wall Switch	S	S
Fan - Reversible Thermostatically Controlled Fantastic Fan in Living Area w/ Wall Switch	S	S
Furnace - Dual Forced Air Furnaces (25,000 BTU - Front; 35,000 BTU - Rear)	S	S
Heaters - Dual Rear Auxiliary Automotive Heaters c/w Electric Control Valve	S	S

ELECTRICAL		
Batteries - 2 x 6V Deep Cycle Auxiliary Coach Batteries on Slide Out Tray	S	S
Bi-Directional Isolator Relay Delay (BIRD) Battery Charging System	S	S
Convenience Center - Mounted Mid Ship includes Level Monitor, Block heater, Thermostat, EMS controls, and Optional Inverter Control	S	S
Converter - 55 Amp - 120/12 Volt c/w Charger	S	S
Converter - 55 Amp - 120/12 Volt c/w Charger	S	S
Generator - 8.0 KW Onan Quiet Diesel w/ Hour Meter in Convenience Center	S	S
Inverter - 2000 Watt Inverter c/w 100 Amp Charger with Remote and 2 Additional Six Volt Batteries	0	0
Inverter - 600 Watt (For Front TV, Bedroom TV, Home Theater, Sat Receiver)	S	S
Panel - 50 Amp Electrical Service c/w Energy Management System	S	S
Prewire - for Solar Panel	S	S
Prewire - Satellite Dish (with 12V Power, Ground, RG-6 Coax and Fish Wire)	S	S
Prewire For Power Main Awning	S	S
Receptacle - Patio GFI Receptacle	S	S
Switch - Battery Disconnect (Coach Batteries)	S	S
PLUMBING AND LP SYSTEMS		
Black Tank Flush w/ Atmospheric Break	S	S
Exterior Shower	S	S
09 Holder - Swing Out Underbody Sewer Hose Holder	S	S
Holding Tanks - Enclosed and Insulated, Dual Heated Waste Holding Tanks	S	S
LP Tank - Easy Access Propane Tank	S	S
Rough in for Washer/Dryer (incl Exterior Vent)	S	S
Water Filter - Whole House Water Filter in Utility Module	S	S
Water Heater - 10 Gallon Electronic Ignition Gas/Electric/Motoraid Water Heater	S	S
Water Tank - Enclosed and Insulated, Dual Heated Fresh Water Tank	S	S
Winterization System c/w Antifreeze Pickup	S	S
SYSTEMS		
Central Vacuum - w/ Outlet in Baggage Compartment	0	0
Washer/Dryer (vented)	0	0
AWNING PACKAGE		
Manual Awning Package includes:	S	S
- Black Awning Hardware		
- Front Door Awning - A&E Oasis Manual		
- Weathershield Equipped 2 Step Patio Awning - Acrylic - 19'		
- Weathershield Equipped A&E Elite Slide Toppers (Number of Awnings Shown)	3	2
Power Awning Package includes:	0	0
- Black Awning Hardware		
- Front Door Awning - A&E Oasis Power w/ Remote		
- Weathershield Equipped A&E Elite Slide Topper (Number of Awnings Shown)	3	2
- Weathershield Equipped Weatherpro Power - Acrylic w/ Remote and Wind Sensor 19 Ft		
Awning - Weathershield Equipped A&E Elite Window Awnings (Main Slide Windows & Bedroom Window)	0	0
Windows - Tinted Radius Corner Thermal Pane Windows	S	S
CERTIFICATION		
Factory P.D.I.	0	0

Exterior Options



Blue Currant

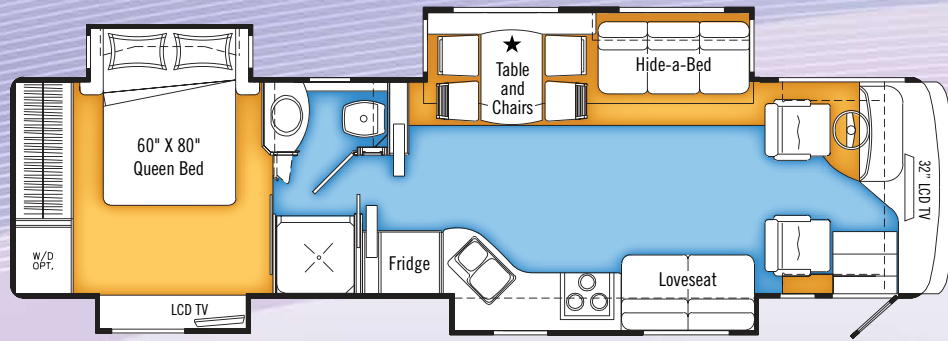


Gold Currant

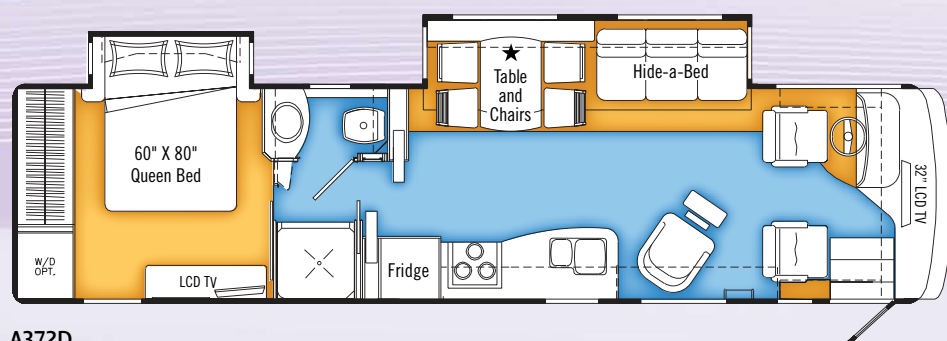


Red Currant

Floorplans



A371Q



A372D

Laminate or Porcelain Tile Carpet ★ Optional Booth Dinette

Specifications

SIGNATURE 2009	A371Q	A372D
GVWR - lbs (kg)	30020 (13616)	30020 (13616)
UVW - lbs (kg)	24010 (10890)	22490 (10201)
NCC - lbs (kg)	6010 (2726)	7530 (3415)
Wheelbase - in (mm)	228" (5791)	228" (5791)
Length - ft (mm)	37'6" (11430)	37'6" (11430)
Width - ft (mm)	8'4" (2534)	8'4" (2534)
Height incl. A/C - ft (mm)	12'4" (3759)	12'4" (3759)
Water Tank Cap.** - gal (l)	102 (386)	102 (386)
Black Holding Tank Cap. - gal (l)	57 (216)	57 (216)
Grey Holding Tank Cap. - gal (l)	57 (216)	57 (216)
Fuel Cap. - gal (l)	100 (379)	100 (379)
Propane Cap. - gal (l)	32 (121)	32 (121)

**Includes 10 gal. water heater
All capacities in U.S. gallons

GVWR (GROSS VEHICLE WEIGHT RATING)
The maximum permissible weight of this motorhome. The GVWR is equal to or greater than the sum of the unloaded vehicle weight (UVW) plus the net carrying capacity (NCC).

UVW (UNLOADED VEHICLE WEIGHT)
The weight of the motorhome as built at the factory. The UVW does not include cargo, fresh water, LP gas, factory or dealer installed accessories.

NCC (NET CARRYING CAPACITY)
The maximum weight of personal belongings, food, fresh water, LP gas, tools, tongue weight of towed vehicle, factory and dealer installed accessories, etc., that can be carried by this motorhome. (NCC is equal to or less than GVWR minus UVW.) Please see your dealer for weights of factory installed options.

Décor

Furniture Dining Chairs Accent Bedspread Carpet



Encore



Veranda



Sun Chasers



Cole Harbour



Chestnut Cherry



Two Year Limited Warranty Triple E is proud to offer a two year limited warranty on structure as well as most major components. Please see your dealer for further details.

Triple E Recreational Vehicles P.O. Box 1230, Winkler, Manitoba, Canada R6W 4C4 Telephone: (204) 325-4361 Fax: (204) 325-5241

Triple E Recreational Vehicles are designed and built to meet or surpass CSA-RVIA standards covering electrical services, gas services, plumbing services and vehicular safety. Signature motorhomes exceed 96" in width. In some states, 96" is the maximum width of vehicles travelling some or all state roads. It is the responsibility of the owner to be familiar with the road usage laws of the states in which you travel. Product improvement is a continuing process at Triple E Recreational Vehicles. We reserve the right to change specifications on any or all products without prior notice; errors and omissions excepted. Triple E Recreational Vehicles is under no obligation to undertake modification to units manufactured prior to changes on specifications. Brochure pictures may be shown with optional equipment. Colours may not be exactly as shown due to the printing process. Please see your dealer for specific colours.

www.tripleerv.com

The elegant flooring accentuates the spaciousness of the full-featured galley. The rich cherry wood cabinetry is complemented by the solid surface backsplash and bifold range cover. The suite of appliances, including an optional 4-door 12 cu.ft. refrigerator and 21" LP glass door oven, make it easy for the creative juices to flow.



Pictures on this page are of the A371Q in Encore Décor.



Offering a place for everything, the Signature is perfect for weekend trekkers or 4 season explorers. There's lots of space in drawers, the hamper and the hanging wardrobe. There's even room for an optional washer/dryer set.

The bathroom has a fiberglass-enclosed shower with glass shower door, residential dual pane skylight in the shower compartment and solid surface counter and basin.

SIGNATURE 2009



Signature 2009 *Let the Good Times Roll*

