

**FLEETWOOD RV**

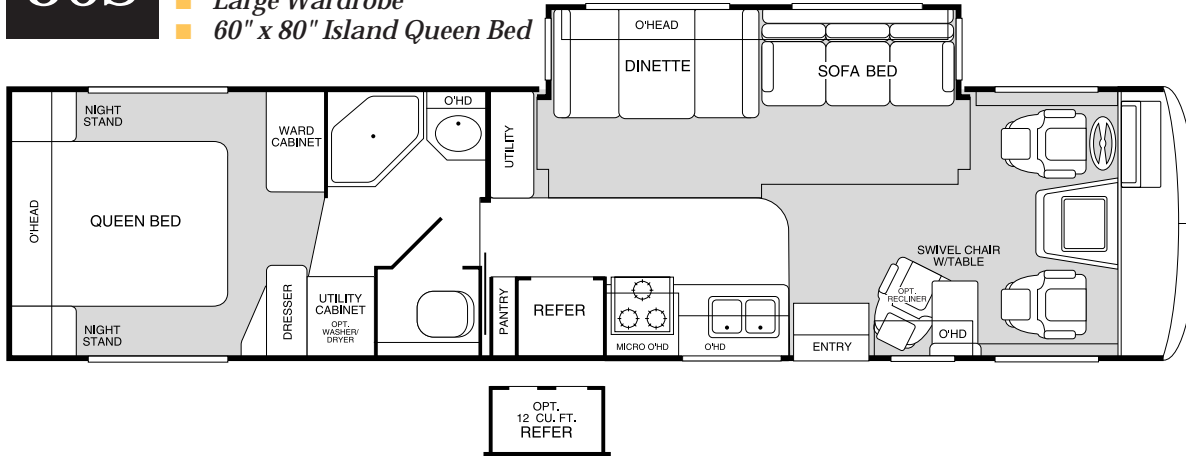


1 9 9 9

# Frequently Asked Questions About Bounder Diesel

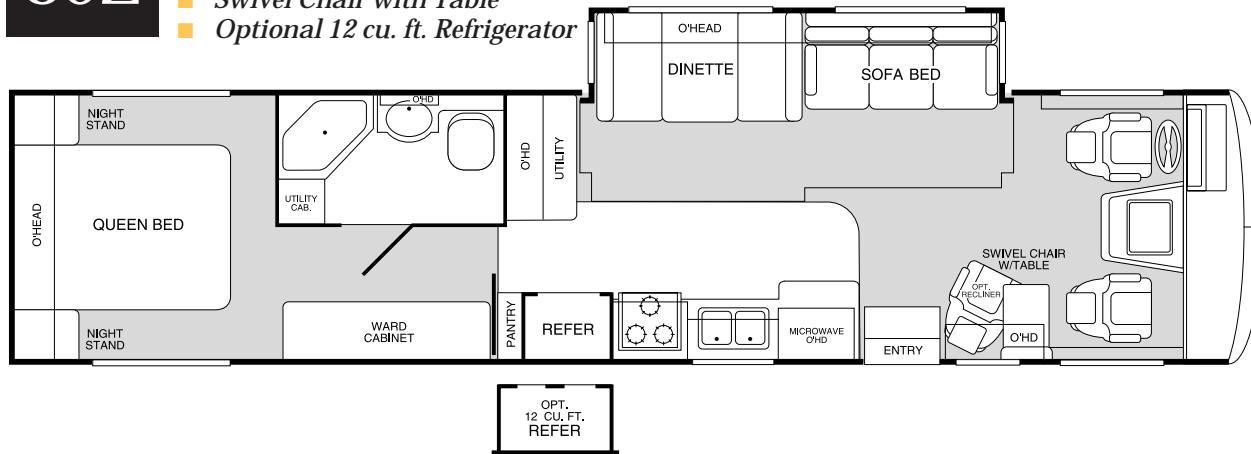
## MODEL 36S

- Living Room Slide-Out
- Large Bathroom
- Private Toilet Area
- Large Wardrobe
- 60" x 80" Island Queen Bed



## MODEL 39Z

- Living Room Slide-Out
- 60" x 80" Island Queen Bed
- Abundant Galley Storage
- Swivel Chair with Table
- Optional 12 cu. ft. Refrigerator



Why Should I Consider the Bounder Diesel?

*Bounder is the most popular RV brand in the world. When John Crean designed the first Bounder, he contacted fellow RVers to determine what was important to them. We did the same when we designed the Bounder Diesel. We took our first prototype to several Bounder rallies, and asked owners what they thought. Then we refined the Bounder Diesel based on their input. And because it's a Bounder, we built in a lot of practicality and function, like a basement platform for pass-through storage and a 100 gallon fresh water tank for extended trips.*

What Makes a Bounder Diesel Different from a Gas Motor Home?

*A Diesel RV isn't for everyone, but it does offer the best value if you have certain requirements. Because diesel engines are very powerful and have long lives, diesel RVs are good if you need a lot of towing and carrying capacity, or if you do a lot of traveling in your coach. In "pusher" models, like the Bounder diesel, the cabin is also quieter since the engine is located in the rear. Long term cost of ownership is typically lower than a gas coach, which offsets a higher initial cost.*

What Is the Power Train for the Bounder Diesel?

*The Bounder Diesel is equipped with a Cummins® ISB 275 h.p. Turbo Diesel engine. The transmission is an Allison® MT-643 heavy duty four-speed automatic with a lock up torque converter. This ideal combination offers excellent power for towing and a smooth, comfortable ride. Bounder owners who tested the vehicle were impressed with the overall performance of the engine and transmission.*

What Is the Warranty for the Bounder Diesel?

*Bounder Diesel is covered by a limited 1 Year/3 Year warranty supported by Fleetwood RV dealers throughout the US and Canada. In addition, the engine is covered by a 5 Year/100,00 mile manufacturer's warranty.*

# 1999 BOUNDER DIESEL FEATURES AND AVAILABLE EQUIPMENT

## **Bounder Diesel by Fleetwood RV** Custom Chassis Standard Features

### Chassis, **Freightliner® XC-Series Motor Home Chassis Features**

13.2 CFM Air Compressor ■ Set-Back Front Axle ■ Dual Fuel Fill  
Air Filter Restriction Indicator ■ Air Suspension Deflation System  
Douglas® Tilt/Telescoping Steering Column ■ Fuel/Water Separator  
Jacobs® Extarder Exhaust Brake ■ Electronic Cruise Control w/High Idle  
750 Watt In-Block Engine Heater ■ VIP® 18" Steering Wheel

### Engine, **Cummins ISB Turbocharged, Aftercooled, 5.9L Electronic Diesel**

Peak HP: 275 hp @ 2,500 rpm ■ Peak Torque: 660 lb/ft @ 1,600 rpm

### Transmission, **Allison MT-643 4-Speed Heavy Duty Automatic w/Lock Up**

Ratios: 1st- 3.58:1 ■ 2nd- 2.09:1 ■ 3rd- 1.39:1 ■ 4th- 1.00:1 ■ Rev- 5.67:1

### Front Axle, **Rockwell FD-965 I-Beam, Wide Track**

Track Width: 81.9 inches

### Rear Axle, **Rockwell RS-15-120**

Track Width: 69.3 inches ■ Drive Ratio: 3.31:1

### Brakes, **Full Air Brakes w/Auto Slack Adjusters and ABS**

Front & Rear Service: 15"x4" (front) & 15"x6" (rear) drum-style S-Cam  
Parking: Push-Pull Lever Controlled Spring-Applied Air Release 15"x6"  
Drum-Style (Rear Axle)

### Electrical System

Alternator: Delco 130 Amp ■ Starting: Delco 28MT, 12 volt ■ Battery: Two

### Steering System, **TRWTAS 65, Integral Hydraulic Power Gear**

Ratio: 20.4:1 ■ Wheel Cut: 50°

### Suspension, **Neway® Air Suspension (Front & Rear)**

Shock Absorbers: Tuned Shocks, Bilstein®  
Stabilizer Bar: Front, Heavy Duty, 1.5" Diameter

### Tires, **Standard**

6 Michelin® XRV 235/80R22.5, LRG

### Wheels, **Standard**

Steel 22.5" x 7.50" w/8 Bolt Lugs

### Instrumentation, **Gauges**

Speedometer w/Odometer ■ Tachometer ■ Engine Oil Pressure  
Water Temperature ■ Coolant Level ■ Voltmeter ■ Fuel Level  
Dual Air Pressure

### Exterior Automotive & Electrical, **Standard Equipment**

S.S. Simulators ■ Valve Extenders ■ Mud Flaps ■ Fog Lamps  
Underhood Utility Light ■ 5,000 lb. Capacity Trailer Hitch  
Halogen Headlamps ■ Windshield Wipers w/Wet Arm\*

### Interior Automotive, **Standard Equipment**

Single-Motor Wiper System w/Intermittent Mode ■ Dash Fans  
Driver/Passenger Sun Visors ■ Auxiliary Start Circuit  
Panasonic® Radio w/Cassette AM/FM/MX Electronic Tune  
Battery Shut-Off Switch ■ Nippendenso® Cab A/C System  
Travel/Park Radio Switch ■ Soft Surface Automotive Dash  
Computer Hookups in Dash ■ Tilt-Up Instrument Panel  
Driver/Passenger Captain's Chairs w/Reclining Back/Slide Controls  
Solar Battery Charger ■ Ducted Roof Air Conditioning

### Platform Construction, **Standard Features**

Heated Water & Holding Tank Compartments ■ Basement Floor Configuration

### Body Structure, **Standard Features**

Vacubond Sidewalls, Rear/Roof Sections, Lower & Upper Floors  
Steel Wall/Roof Framing ■ Rubber Roof Covering ■ EZ-Glide™ Slide-Out System

### Appliances, **Standard Features**

20" Panasonic® Stereo TV in Living Room ■ Video Switch Box (TV/VCR)  
20" Panasonic® Stereo TV in Bedroom ■ Winegard® TV Antenna  
Dual Furnace 20M BTU/35M (39Z Only) ■ Furnace 42M BTU (36S Only)  
3 Burner Deluxe Range w/Oven (Large) ■ Light/Power Range Hood  
RV System Monitor Panel, Dash Mounted ■ Folding Range Cover  
Dual Roof A/C, High Efficiency ■ Water Heater Bypass ■ Garbage Disposal  
Porcelain Toilet (RV Type) ■ Eye-Level Panasonic® Microwave  
Dometic® 8.0 cu. ft. Refrigerator ■ Single-Lever Galley Faucet  
Water Filter w/Faucet ■ Demand Water Pump w/Filter  
Dual Fantastic® Power Vent in Galley & Bath ■ Park Phone Ready  
Phone Jack under Dash ■ Rear Speakers in Bedroom

### Electrical, **Standard Features**

3 Remote Water Pump Switches ■ Detachable 30' 30 Amp Power Cord  
Wall Switches ■ Electronic Climate Control System ■ VCR Ready  
2,000 Watt Heart Interface Inverter/Converter ■ Satellite Ready  
Four 6V/Deep Cycle 217 Amp House Batteries

# 1999 BOUNDER DIESEL FEATURES AND AVAILABLE EQUIPMENT

## Interior, **Standard Features**

Skylight in Tub/Shower ■ Glass Shower Door w/ Bright Brass Frame  
 Flexsteel® Furniture ■ Wall to Wall Nylon Carpet w/Pad  
 Vinyl Floor Covering (Galley & Bath) ■ Wood Drawers ■ Storage Behind Sofa  
 Roller Guide Drawer Slides w/Transit Ship Locks ■ Radius Corner Cabinetry  
 Large Overhead Cabinets w/Adjustable Shelves ■ Innerspring Mattress ■ Headboard  
 Bedspread w/Decor Pillows ■ Decorator Wood Mini-Blinds Throughout  
 Underbed Storage w/Auto Lift ■ Corian® Galley Counter Tops  
 Corian® Sink Covers ■ Crown Molding ■ Slide-Out Living Room & Dinette Areas  
 Corian® Edge Lavy Top w/Porcelain Bowl ■ Beveled Mirrors  
 Deluxe Medicine Cabinet Large Concealed Trash Compartment (39Z Only)  
 Wood Trim Table Tops ■ Deluxe One-Piece Tub/Shower Enclosure w/Seat  
 Bright Brass Bath Accessories ■ Residential-Style Seating  
 Oak Trimmed Dinette Table ■ Entry Assist Rail (Oak& Brass)  
 Decor Lighting ■ Extra Large Cutting Board (39Z Only) ■ Large Double Porcelain Sink  
 Flex-O-Lator® Dinette w/Adjustable Seating ■ 3 Light Brass Vanity in Bath  
 48" 120V Fluorescent Light Above Galley w/Oak Bezel

## Exterior, **Standard Features**

Aerodynamic Bus Styling ■ Radius Entry Doors/Deadbolt Latch  
 Dual Pane Radius Slider Windows ■ Hydraulic Levelers, 4 Point  
 Roof Ladder ■ 110V Patio Receptacle (Road/Door Sides)  
 Heated Remote Rear View Mirrors ■ Park Cable Receptacle  
 Power Entry Step ■ Exterior Shower  
 Porch Light (Road/Door Sides) ■ 25' Water Hose w/Quick Disconnect  
 Lower Body Accent Paint

## Exterior Storage, **Standard Features**

Insulated Luggage Doors ■ Single Padded/Metal Latches  
 Continuous One-Piece Bulb Seal ■ Central Utilities Compartment  
 EZ-Store™ System (Storage Compartments Move w/Slide-Out Room)  
 Lighted, Carpeted Luggage Compartments

## Sleeping Accommodations, **Standard Features**

Convertible Sofa: 46" x 76" ■ Dinette: 42" x 74" ■ Queen Bed: 60" x 80"

## Safety Equipment, **Standard Features**

Fire Extinguisher ■ Smoke Detector ■ LP Detector ■ CO Detector  
 3-Point Seat Belts w/Shoulder Restraints

## Bounder Diesel Optional Features

Awning, USA ■ Stereo AM/FM CD Player ■ DSS Manual Lift Satellite Dish  
 Dishwasher (39Z Only) ■ Sharp® Convection Microwave ■ Washer/Dryer  
 Dometic® 12 cu. ft. Side-By-Side Refrigerator w/Ice Maker  
 Onan® 7.5 KW Quiet Diesel Generator ■ Lounge Recliner  
 Panasonic® Rear Vision Camera ■ Leather Driver/Passenger Seats

## ***Bounder Diesel by Fleetwood RV*** Specifications

Weight Capacities	36S	39Z
GVWR <sup>1</sup> Lbs.	24,850	24,850
Front GAWR <sup>2</sup> lbs.	9,350	9,350
Rear GAWR lbs.	15,500	15,500
GCWR <sup>3</sup> lbs.	29,850	29,850

Dimensions		
Overall Length	36'	39'
Wheel Base	228"	252"
Overall Height w/AC	12'1"	12'1"
Exterior Width	102"	102"
Interior Height	79"	79"
Interior Width	96"	96"

Capacities		
Exterior Storage (cu. ft.)	121	125
Fresh Water (gal.)	100	100
Black Water Holding (gal.)	50	50
Grey Water Holding (gal.)	50	50
LPG Tank <sup>4</sup> (gal.)	35	35
Fuel Tank (gal.)	90	90
Water Heater (gal.)	6	6

<sup>1</sup> GVWR (Gross Vehicle Weight Rating): Maximum permissible weight of this motor home. The GVWR is equal to or greater than the sum of the unloaded vehicle weight plus the net carrying capacity.

<sup>2</sup> GAWR (Gross Axle Weight Rating): Maximum permissible loaded weight a specific axle is designed to carry.

<sup>3</sup> GCWR (Gross Combination Weight Rating): Value specified by the motor home manufacturer as the maximum allowable loaded weight of this motor home with its towed trailer or towed vehicle.

<sup>4</sup> Tank manufacturer's listed water capacity (WC) actual filled. LP capacity is 80% of listing due to safety shutoff required on tank.



Your local Fleetwood dealer is:

If your local dealer is not indicated, write to the address below, or call us toll free at 1-800-444-4905.  
Or visit our Website at <http://www.fleetwood.com>



**Fleetwood Enterprises, Inc.**  
**PO Box 2875, Van Nuys, CA 91404-2875**

Product information and photography included in this brochure were as accurate as possible at the time of publication. Subsequent refinements may be evident in the actual product. Prices and specifications are subject to change without notice. All fuel and liquid capacities are approximate and dimensions are nominal. Fleetwood has designed its motor home brands to provide a variety of potential uses for its customers. Each unit features the optimum storage, fluid, seating and sleeping capabilities. Though the customer enjoys this potential, he/she also has the responsibility to select the proper combinations of loads without exceeding the chassis weight capacities.

© 1999 Fleetwood Enterprises, Inc. Inventory Control No. 159901