



2 0 0 1

FLEETWOOD.RV

GET OUT AND
LIVE A LITTLE



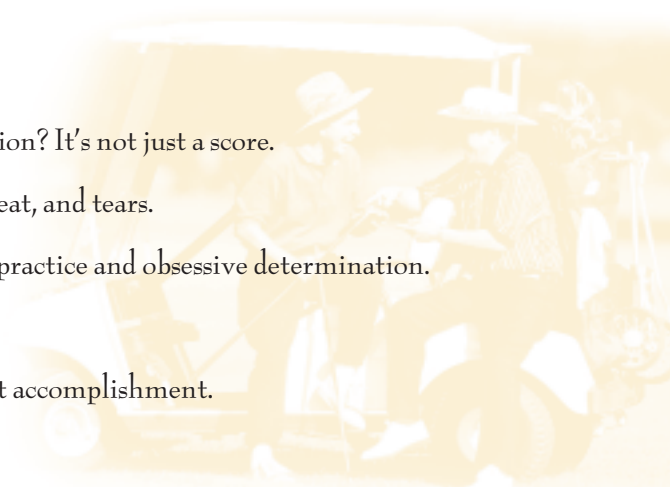
Relax

When was the last time you witnessed perfection? It's not just a score.
It's not whether you win or lose. It's not the blood, sweat, and tears.

It happens after long hours of practice and obsessive determination.

After studying the pros.

After fantasizing about accomplishment.



Inspired by the original Bounder®, this diesel motor home captivates with its wide-open interior and contemporary decor that makes it your home-away-from home.



You're never far away from your favorite program with an easy-to-operate video control box for the 20" Panasonic® TV and VCR.



Backsplash and countertop of Corian® in the galley complete with large porcelain sink, name-brand appliances and lots of storage give new meaning to eating out.

Take

Take life in as you travel with the Bounder® Diesel.

Nothing has been overlooked in providing the elegance and comfort you desire in this contemporary motor home. Living areas are made even larger with generous slide-outs. For entertaining or just being on the road, preparing food will be a delight. There's a large 8 cu. ft. Dometic® double-door refrigerator (or an optional 14 cu. ft. side-by-side with ice maker), a Magic Chef® 22" 3-burner, high-output range and oven, Sharp® microwave and a large porcelain sink surrounded

by a countertop and backsplash of durable Corian®. Pantry and dish space is never a problem with roomy storage drawers.

The bath also features porcelain for both sink and toilet, and a countertop edged with Corian®. For even more on-the-road convenience, there's an optional residential-style washer/dryer.

It's no wonder this RV has earned its place in the hearts and minds of owners throughout North America. The wonderful feeling you experience with the Bounder Diesel never changes, just the scenery.



Enjoy the



1



2

1 Hookups are easily accessed from the driver's side. Adjacent is the wash station for convenient outside cleaning.

2 Every Bounder Diesel comes prewired for an optional Winegard® satellite dish.

3 A coach-length, aluminum drip rail prevents discoloring of the sidewall.

4 Practical, single die-cast metal paddle latches are flush-mounted for a luggage door system that's durable and easy-to-operate.

5 Single key access to Bounder Diesel's entry door and compartments provides practical entry and convenient storage.

6 Bounder Diesel's automotive-bonded windshield is designed to prevent moisture intrusion and provide an unobstructed panoramic view.

Par, goal, home run—however it adds up. The perfection begins the moment the ball is in flight.

After the balanced swing or throw. We watch with our hearts pounding.

We lose ourselves in the spin, the speed, and the direction it flies. Even as we yell our praise or disapproval, we wonder and wait in surreal silence for the ball to reach its destination.

When was the last time you witnessed perfection?

We'll ask you when you get back.



The optional computer workstation has lots of storage for all your computer equipment.



Double-length bedroom slide-out features include a spacious wardrobe with 20" Panasonic® TV over the handcrafted dresser drawers.



The coordinated colors of bed and window fabrics are as charming as the crown molding and the decor brass and glass lighting.

All the special features and luxury you encounter with Bounder Diesel are a constant reminder that, no matter how far into the wilderness you travel, you're never far from civilization.

You'll want the freedom Bounder Diesel affords you with its 80-gallon fresh water capacity and the 6-gallon quick-recovery water heater for refreshing showers. The interior also features large, overhead cabinets with adjustable shelving. Underneath the coach, there's expansive, insulated exterior cargo holds with strut-assisted doors that enable easy transfer of gear. In the bed-

room, full-size wardrobe closets with large drawers underneath are the kind of storage features you'll appreciate. Then sense the comfort and style with its bedspread, decor pillows and color-coordinated window coverings. You have three decors to choose from.

For indoor entertainment, view two different shows at once. There are 20" Panasonic® TVs in the front and rear.

Once you've experienced Bounder Diesel, you'll never forget it. It's your chance to fill your life with a scrapbook of memories.



2 0 0 1

FLEETWOOD® RV

Life's a Journey. Savor It.

Hit the fairway. Set out for the desert. Go into the wilderness. Reward yourself with miles of experiences and panoramic vistas as you travel in the Boulder® Diesel motor home.

Imagine the gas Boulder that's known for its function, value and convenience. Then add more features and amenities. Especially the power and reliability provided by a 275-HP Cummins® diesel engine and a 6-speed electronic Allison World Transmission® for long-range performance and economy. Now you can effortlessly tow your boat, personal watercraft or motor cycles with a 5000 lb. hitch-rated towing capacity*.

This motor home sports a full fiberglass front cap and rear valance for improved aerodynamics and

even greater fuel efficiency. On the interior, luxury styling with contemporary decor choices will captivate you. Check out the jacquard fabrics that elegantly frame the torque windows in the bedroom. You'll also love the crown molding in the bedroom and countertops made of Corian® in the galley.

This is the chance for loyal Boulder owners to move into a diesel experience without leaving the club and rallies you've come to know. Or, it's time to get acquainted.

So travel long. Travel hard. The Boulder Diesel is a home that's meant to be enjoyed.



* Check your owner manual(s) for towing safety, rules and guidelines.

Cummins® is a registered trademark of Cummins • Allison World Transmission® is a registered trademark of Allison • Corian® is a registered trademark of DuPont of the United States.

Features for 2001 Bounder Diesel

Our engineering may set us apart from the rest, but the things you'll notice most when you and your family take a trip, are the top-of-the-line features. Here are but a few of the items that make life on the road with Bounder Diesel memorable.



The optional extra-large 14 cu. ft. side-by-side Dometic® refrigerator with ice maker will make long trips or entertaining lots of friends more convenient.



Conveniently store your pots and pans in one of the galley's special kitchen drawers with dual-metal drawer guides to assure fluid movement.



A standard electronic climate control system with dual A/C controls enables a separate climate in the front and rear of the coach.



Get "live" sound with the optional DHS Home Theater Sound System.

The driver's compartment features an easy-to-read instrument panel and an extra-large, flip-up storage area.



There's plenty of room for all your favorite things in our spacious overhead cabinets.

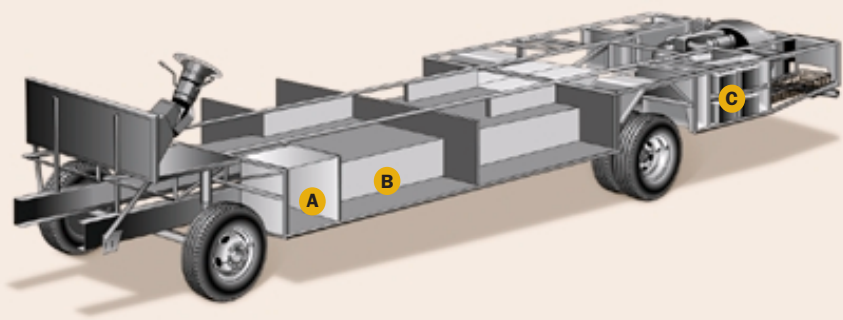


Bounder Diesel's basement space includes lots of storage for your gear.



The Diesel Power Platform II Makes the Difference

Bounder Diesel's quality begins long before the features come on board. We begin by building on our exclusive diesel Power Platform II, a unique truss design welded together using tubular steel that's durable, strong, and dependable. The result is a quiet and nearly flawless ride, increased floor strength, and substantially more storage space below. An all-steel foundation further reduces stress loads on the sidewalls and minimizes chassis flex on uneven roads.



A All exterior compartments are reinforced with substantial steel outriggers for increased durability and years of cargo carrying.

B Full basement construction maximizes space beneath the floor, encloses the heated water and holding tank compartments and provides easy-to-reach storage.

C Easy access compartments let you get to Bounder Diesel's batteries and dual-battery charge control.

Drawing is for illustrative purpose only to highlight aspects of motor home construction. Actual motor home design depends on model and is subject to change.

2001 Bounder Diesel Standard Features

Appliances

- Front 20" Panasonic® Television in Overhead
- Rear 20" Panasonic® Television
- VHS/VCR
- Smoke Detector/Alarm
- Video Control Box (TV/VCR)
- LPG Detector/Alarm
- CO Detector/Alarm
- 6-Gallon, Quick Recovery Water Heater with D.S.I. (Gas/Electric)
- 22" 3-Burner, High-Output Range with Oven
- Light/Power Range Hood
- RV System Monitor Panel
- Folding Range Cover
- High Efficiency, Dual Roof A/C with Solar Panel
- Water Heater Bypass
- Garbage Disposal
- Porcelain Toilet with Water Saver
- Toilet Tank San-T-Flush™ System
- 1-cu. ft. Microwave
- 8-cu. ft. Dometic® Double Door Refrigerator
- Single Lever Galley Faucet
- Water Filter with Faucet
- Demand Water Pump with Filter
- TV Antenna
- Fan-Tastic® Power Roof Vents in Galley and Bath
- Fire Extinguisher
- Telephone Jack in Dash and Bedroom
- Rear Speakers in Bedroom

Body Structure

- Vacubond Upper/Lower Floors
- Vacubond Walls with High Gloss Exterior Fiberglass
- Radius Roof with Ducted A/C
- Rubber Roof
- Steel Wall/Ceiling Framing

Electrical

- Dual Patio Receptacle
- 120V/12V AC/DC Converter Central Electrical Panel
- 2000 Watt Inverter
- 120V/12V Wire Raceways
- Water Pump Switch
- 30-amp Service
- Wall Switches
- ECC Climate Control
- 4-6V/Deep Cycle 218 amp House Batteries

Exterior

- Full Fiberglass Front Cap
- Side Opening Engine Access Door
- Fiberglass Front and Rear Bumpers
- Fiberglass Wheel Trims
- Aerodynamic Styling
- Radius Entry Door with Deadbolt Latch
- Dual Pane Slider Windows
- Torque Windows in Bedroom
- Bounder Diesel Logo Badging

Exterior (cont.)

- Utility Compartment
- 4-Pt. Manual Hydraulic Levelers
- Roof Ladder
- Dual Location Fuel Fill
- Exterior Assist Handle
- Heated Remote Rear View Mirrors
- 20' Sewer Hose
- Park Cable Receptacle
- Awning Rail/Drip Molding (Both Sides)
- Power Entry Step
- Dual Battery Charge Control
- Porch Light
- 25' Water Hose
- Exterior Shower
- 3 Colorway Graphics to Match Decor
- Lower Body Accent Paint

Exterior Automotive

- Large Curved Aerodynamic Windshield
- Undercoating
- Stainless Steel Wheel Simulators
- Valve Extenders
- Mud Flaps
- Underhood Utility Light
- Steel Surface on Bulkhead
- Trailer Hitch with 7 Pin Electrical Hookup
- Halogen Headlights
- Fog Lights
- Rear Camera Ready
- Windshield Wipers with Wet Arm
- Freightliner® Chassis 275 HP

Exterior Storage

- Insulated Luggage Doors
- Single Paddle/Metal Latches
- Continuous One Piece Bulb Seal
- Central Utility Compartment
- Hidden Stainless Steel Latch Rods
- Gas Lift Strut Supports
- Lighted Compartments
- Steel Seal Frames
- Carpeted Luggage Compartment

Interior

- 3 Interior Decors
- Jacquard Feature Fabrics
- Skylight in Tub/Shower
- Glass Shower Door with Bright Brass Frame
- Flexsteel® Furniture
- Oak Wood Grain
- Wall to Wall Nylon Carpet with Carpet Pad
- Vinyl Floor Covering—Galley/Bath
- Wood Drawers
- Roller Guide Drawer Slides with Transit Ship Locks
- Radius Corner Cabinetry
- Large Overhead Cabinets
- Brass Cabinet Hardware

Interior (cont.)

- Vinyl Pull Shades in Entry
- Metal Mini Blinds in Galley
- Day/Night Shades
- Bedspread with Decor Pillows
- Innerspring Mattress
- Oak Cabinet Doors & Drawers
- Corian® Galley Countertops
- Crown Molding in Bedroom
- Headboard
- Beveled Mirrors
- Window Coverings—Color Coordinated to Decor
- Wainscot Paneling in Bedroom
- Wood Trim Table Tops
- Solid Surface Sink Cover
- Solid Surface Edge Lavy Top with Porcelain Bowl
- ABS Molded Tub/Shower
- Bright Brass Bath Accessories
- Residential Seat Styling
- Entry Rail (Oak & Brass)
- Raised Panel Cabinet Doors
- Adjustable Cabinet Shelves (Selected Cabinets)
- Sink Cutting Board
- Large, Double Porcelain Sink
- Ducted Roof Air Conditioning

Interior Automotive

- Intermittent Wiper Control
- Multi-Function Sun Visor
- Cruise Control
- Radio with Cassette AM/FM/MX—Electronic Tuning
- Auxiliary Start Circuit
- Battery Disconnect System
- Auto A/C Heater Combo
- Radio Switch—Main/Auxiliary
- Soft Surface Automotive Dash
- Tilt/Telescoping Steering Wheel
- Driver/Passenger Captain's Chairs with Reclining Back/Side Controls
- Dash Fans
- Solar Battery Charger
- 3-Point Seat Belts on Driver/Passenger Seats

Interior Lighting

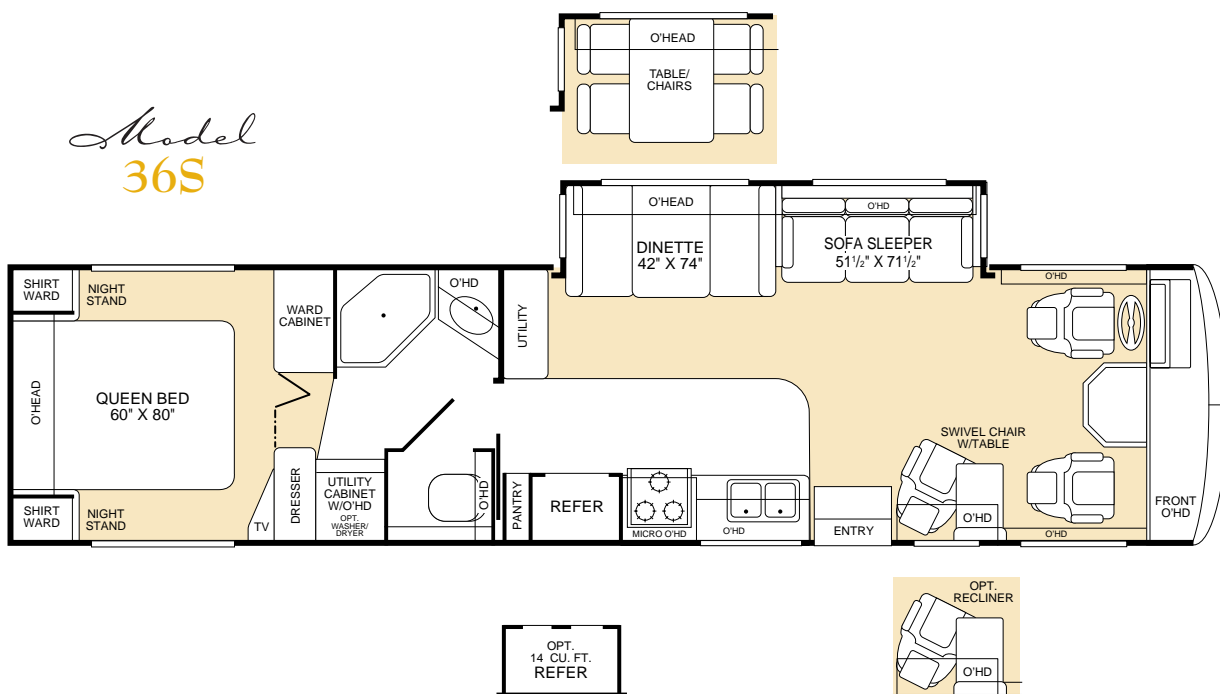
- Fluorescent Ceiling Lighting
- Decor Lighting
- Incandescent Lighting
- 4-Light Brass Vanity
- Make-Up Lights in Bath

Platform Construction

- Power Platform II Floor Configuration
- Heated Water & Holding Tank Compartments
- Polyethylene Luggage Compartment Box (Selected Locations)
- Steel Truss System
- Steel Outriggers

2001 Bounder Diesel Floor Plans

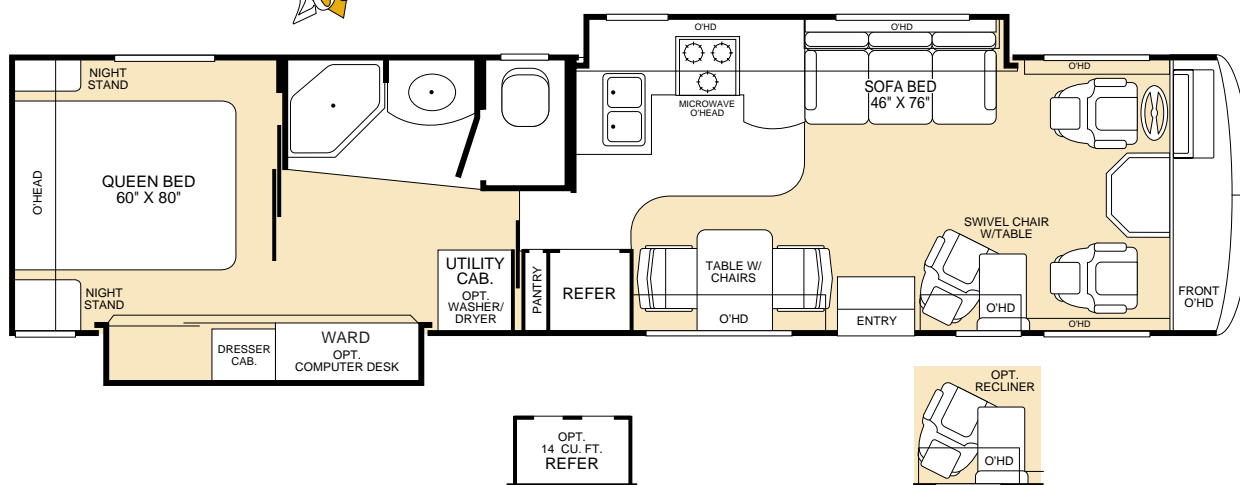
Model 36S



- Island Queen Bed
- Dual Shirt Wards and Nightstands
- Dresser
- Optional 14 cu. ft. Refrigerator
- Optional Washer/Dryer
- Private Toilet
- Living Room Slide-Out with Sofa Sleeper
- Dinette or Optional Table with Chairs
- Swivel Chair with Table or Optional Recliner

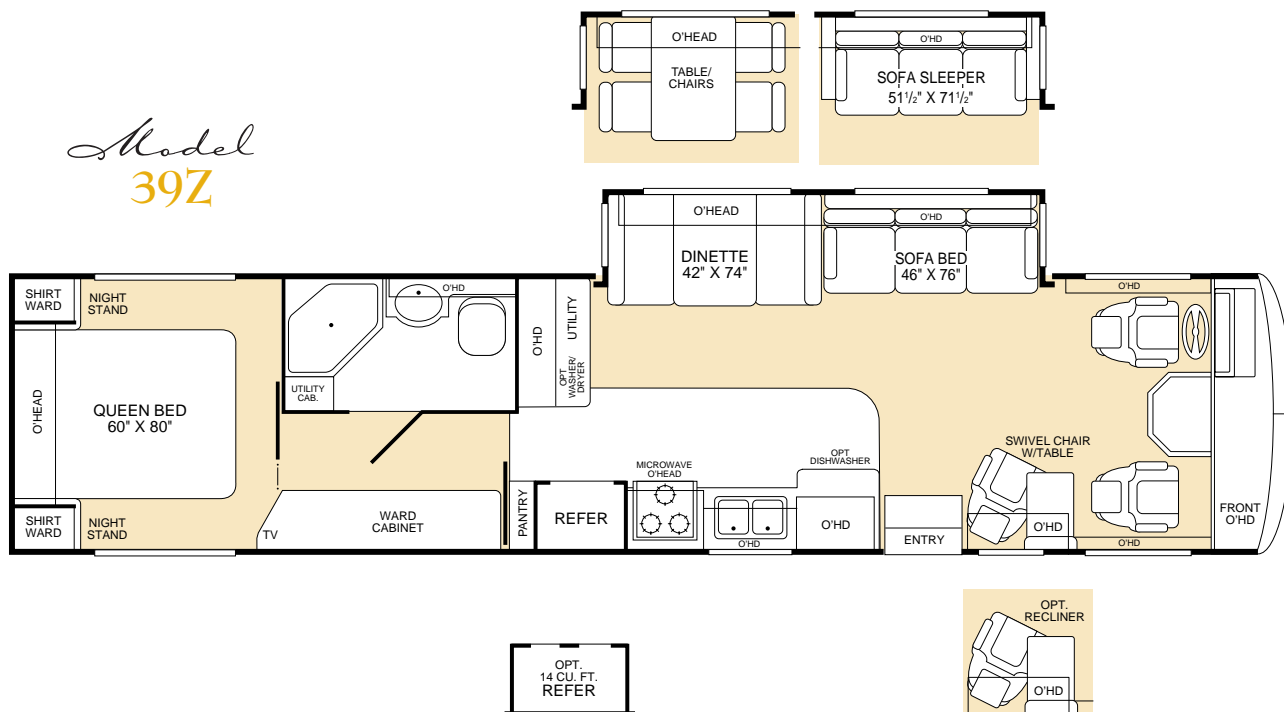
Model 37K

NEW FOR 2001



- Island Queen Bed
- Double-Length Wardrobe Slide-Out with Dresser and TV
- Optional Computer Desk
- Optional 14 cu. ft. Refrigerator
- Optional Washer/Dryer
- Private Toilet
- Galley/Living Room Slide-Out with Sofa Bed
- Swivel Chair with Table or Optional Recliner
- Table with Chairs

Model
39Z



- Island Queen Bed
- Dual Shirt Wards and Nightstands
- Fully Enclosed Bathroom
- Dinette or Optional Table with Chairs
- Optional Dishwasher
- Optional 14 cu. ft. Refrigerator
- Living Room Slide-Out with Sofa Bed
- Optional Sofa Sleeper
- Swivel Chair with Table or Optional Recliner

Realize a new sense of adventure by joining a Bounder Club.

Traveling to new destinations and making new friends are some of the adventures awaiting you in a Bounder Diesel RV. Especially when you join a Bounder Club where you'll meet others with a similar passion for the RV lifestyle. Contact any of these organizations for membership information.

Bounders United

530-647-0809
P.O. Box 3580
Diamond Springs, CA 95619-9998
lelandja@directcon.net

Bounders of America

863-984-8272
P.O. Box 866
Polk City, FL 33868
james31@mindspring.com



2001 Bounder Diesel Options



Appliances	36S	37K	39Z
Dishwasher	N/A	N/A	OPT
Convection Microwave	OPT	STD	STD
Washer/Dryer	OPT	OPT	OPT
14 cu. ft. Side-by-Side Dometic® Refrigerator with Ice Maker	OPT	OPT	OPT
CSA Convection Microwave	OPT	OPT	OPT
Furnace 20M BTU/34M (Dual)	N/A	STD	STD
Furnace 34M BTU	STD	N/A	N/A
Electrical	36S	37K	39Z
7.5kW Onan® Diesel Generator	OPT	OPT	OPT
CSA Package–Freightliner®	OPT	OPT	OPT
DSS Manual Lift Satellite Dish	OPT	OPT	OPT
Exterior	36S	37K	39Z
Awning–USA	OPT	OPT	OPT
Interior	36S	37K	39Z
Lounge Recliner	OPT	OPT	OPT
Coffee Table	OPT	OPT	OPT
Free-Standing Dinette and Chairs	OPT	STD	OPT
Rear Vision Camera	OPT	OPT	OPT
Leather Driver/Passenger Seats with Power Driver	OPT	OPT	OPT
Concealed Trash Compartment	N/A	STD	STD
Storage Behind Sofa	N/A	STD	STD
Wardrobe Lighting	STD	STD	N/A
Bedroom Radio	OPT	OPT	OPT
Laundry Hamper	OPT	OPT	OPT
Home Theater Sound	OPT	OPT	OPT
Interior Automotive	36S	37K	39Z
Stereo AM/FM CD Player	OPT	OPT	OPT
CB Radio Ready	OPT	OPT	OPT
Multiple Compact Disc Player/Changer	OPT	OPT	OPT

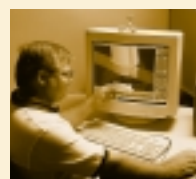
IMPORTANT – PLEASE READ: Product information and photography included in this brochure were as accurate as possible at the time of publication. For the most current product information and changes, please visit our website at www.fleetwood.com or contact your local Fleetwood dealer. Subsequent refinements may be evident in the actual product. Prices and specifications are subject to change without notice. All weights, fuel, liquid capacities and dimensions are approximate. Fleetwood has designed its recreational vehicles to provide a variety of uses for its customers. Each vehicle features optimal seating, sleeping, storage and fluid capacities. The user is responsible for selecting the proper combination of loads to ensure that the recreational vehicle's capacities are not exceeded.

Onan® is a registered trademark of Cummins.

What happens when you've been setting the standards of RV quality for over 50 years?

You set them even higher. Our customers expect us to. As a matter of fact, first-time RV buyers, who bought other manufacturers' RVs, tell us they wish they'd spent a little bit more for better quality. That's why experienced buyers are more likely to buy a Fleetwood RV.* That's also why Fleetwood RV invests in people, systems and manufacturing quality that are second to none. This may make us a bit more expensive than some brands, but satisfied Fleetwood RV owners know we're worth it.

People... We hire engineers, designers and drafters from leading automotive design schools. Our front-line associates are well-trained, quality-minded men and women who take pride in their work. No other manufacturer has a larger, more professional team behind their products.



Systems... Our product development team uses state-of-the-art, computer-assisted-design (CAD)

technology to build in fit and finish right from the drawing board. Each product is meticulously documented with over 3,500 pages of engineering drawings. A computerized bill of materials details over 20,000 pieces that go into your motor home. And, a vehicle specific *Electronic Parts Catalog* shows 600-800 common parts... so, if you need a new part, your authorized Fleetwood RV service dealership knows exactly what you need. Some manufacturers may not invest the extra time and money to accurately document their products, which could cost you plenty in headaches and hassles.

*Angus Reid RV Market Segmentation Study, 1998

2001 Bounder Diesel Specifications

Freightliner® Chassis 275 HP Engine	36S	37K	39Z
Engine LD	5.9L	5.9L	5.9L
Wheelbase	228"	242"	252"
GVWR lbs/kgs (1)	26,500/12,018	26,500/12,018	26,500/12,018
Front GAWR lbs/kgs (2)	9,500/4,308	9,500/4,308	9,500/4,308
Rear GAWR lbs/kgs (2)	17,000/7,711	17,000/7,711	17,000/7,711
Base Weight lbs/kgs (3)	18,964/8,600	19,312/8,758	19,325/8,764
GCWR lbs/kgs (4)	31,500/14,286	31,500/14,286	31,500/14,286
Hitch Rating/Tongue Weight lbs	5,000/500	5000/500	5,000/500
Hitch Rating/Tongue Weight kgs	2,268/227	2,268/227	2,268/227
Fuel Capacity gal/lbs (7.1 lbs/gal)	90/639	90/639	90/639
Dimensions	36S	37K	39Z
Length (5)	36' 10"	37' 4"	38' 10"
Height (with A/C)	12' 1"	12' 1"	12' 1"
Width (maximum) (6)	102"	102"	102"
Interior Height (maximum)	79"	79"	79"
Interior Width (maximum)	96"	96"	96"
Liquid Capacities (Gallons/Liters)	36S	37K	39Z
Fresh Water Holding Tank (8.3 lbs/gal)	80/302	80/302	80/302
Grey Water Holding Tank (8.3 lbs/gal)	50/189	50/189	50/189
Black Water Holding Tank (8.3 lbs/gal)	50/189	50/189	50/189
Appliance LPG Tank (4.5 lbs/gal) (WC) (7)	35/133	35/133	35/133
Water Heater	6/23	6/23	6/23
Metric Conversions:	Feet to meters: ft x .304 = meters	Lbs to kgs: lbs x .454 = kgs	Gallons to liters: gal x 3.78 = ltrs

1. **GVWR (Gross Vehicle Weight Rating):** Means the maximum permissible loaded weight of the motor home. The GVWR is equal to or greater than the sum of the unloaded vehicle weight plus the net carrying capacity.
2. **GAWR (Gross Axle Weight Rating):** Means the maximum permissible loaded weight a specific axle is designed to carry.
3. **BW (Base Weight):** Means the weight of the motor home without fuel, options, water, cargo or passengers.

4. **GCWR (Gross Combined Weight Rating):** Means the value specified by the motor home manufacturer as the maximum allowable loaded weight of this motor home with its towed vehicle. Towing and braking capacities may differ. Refer to Fleetwood and chassis manufacturer manuals for complete information.
5. Length taken from front bumper to rear bumper.
6. Excludes safety equipment and awnings.
7. Tank Manufacturer's listed water capacity (WC). Actual LPG capacity is 80% of water listing as required by the safety code.

TuffPEX™ is a trademark of Uponor.

Manufacturing... We only do what we know we're best at—building a quality-finished motor home. When it comes to the appliances, doors, windows, and furniture, we partner with other recognized leaders to do what they know best... top names like Sharp®, Panasonic®, Dometic®, Restonic® and Flexsteel®. Some manufacturers will tell you partnering like this makes us final assemblers. We call it working smarter to bring you more value.



We build our cabinets and secure them to the floor before the walls go up to add strength, and help eliminate noises.

Quality... The quality outside reflects the quality inside—places where you can't see it, but where it really counts. For example, we use vacubonded sidewall construction that's required for the special needs of a motor home. Automotive bonded windshields on most models. Our new TuffPEX™ plumbing system is able to withstand temperatures as low as -40° F. And now offered on our mid- to high-end Class A motor homes, a new, revolutionary exterior sidewall material which contains no wood products to guard against swelling, rotting and delamination. Before any unit rolls off the line at each of our plants, it goes through a documented checklist containing hundreds of items specific to

that product. It won't leave the plant until it has met our high standards. And, the list goes on.

For strength, noise reduction and insulation, composite sidewalls and floors are constructed of steel, plywood and polystyrene foam.



From the drawing board to the assembly line, we will continue to develop and manufacture quality products for our customers.

Fleetwood RV... Setting standards beyond your expectations.

Fleetwood's Far-Reaching Warranty and Service Program



Limited One-Year/ Three-Year Warranty

Leaving the Fleetwood dealership after you've purchased your RV doesn't mean leaving each dealer's commitment to your satisfaction behind.

OWNERCARE, Fleetwood's extensive warranty and service program, provides one/three year(s) of dedicated customer satisfaction. OWNERCARE stands out as one of the RV industry's most comprehensive programs and includes systems and applications, construction, no deductible and no service charge. See your nearest Fleetwood dealer for a full explanation of benefits and restrictions.

Fully Transferable

At Fleetwood RV, we're confident in our products and don't hesitate to stand behind them. Your newly purchased Fleetwood RV comes with one of the industry's most comprehensive warranties, fully transferable for the first 12 months.

National Coverage

Have a question about your new Fleetwood RV? We've got it covered.

The nation's largest trained dealer network—ready, willing and able to provide you with the services you need to make every moment of owning your RV enjoyable.

Over 1,100 Fleetwood dealers throughout the U.S. and Canada are available to you. With national coverage, peace of mind and complete satisfaction are just a phone call away.



An Extra Thank You

Ask your dealer about your Thousand Trails complimentary 30-day membership certificate. It's your chance to get going in your new RV and enjoy some scenic camping, plus our way of thanking you again for your purchase of a Fleetwood RV. For more information on your complimentary membership certificate, please call

1-800-205-0606. Happy (Thousand) Trails!



Fleetwood RV and Motor Sports: A Winning Team



Three wide in the first turn. 200 miles per hour on the back straight. Passing for the lead through the short chute. Nothing beats the excitement of NASCAR racing. Every year thousands of NASCAR fans and Fleetwood RV owners travel to races to support their favorite drivers, enjoy time with family and rekindle friendships.

RVs have become as much a part of motorsports as pit row and the checkered flag. That's why Fleetwood RV is a proud sponsor of 1999 Winston Cup Champion Dale Jarrett and the Robert Yates Racing Team.

As the number one RV manufacturer* in the country, our winning ways continue. Fleetwood RV is now the "Official Recreational Vehicle" at nine

*According to Statistical Surveys Jan. '99-Dec. '99

International Speedway Corporation racetracks.** And for Fleetwood owners, emergency service crews are available at select tracks to ensure a trouble-free weekend. While you're enjoying the race, be sure to look for the Fleetwood RV Prize Patrol and go home with some exciting giveaways.

So this weekend, pack up your friends and family and experience the thrill of cheering on Dale firsthand, in first-class style, with Fleetwood RV.

** Daytona International Speedway, Darlington Raceway, Talladega Superspeedway, California Speedway, Richmond International Speedway, Michigan Speedway, Watkins Glen International Speedway, Phoenix International Raceway, Homestead-Miami Speedway.



www.fleetwood.com

Visit our website to find a dealer near you, learn more about other Fleetwood products or purchase Fleetwood branded apparel. Or call 1-800-444-4905.

FOR CUSTOMER ASSISTANCE, call toll free 24 hours a day at 1-800-322-8216, visit our website, or you may write to Fleetwood Enterprises, Inc., P.O. Box 7638, Riverside, CA 92513-7638.

IMPORTANT—PLEASE READ: Product information and photography included in this brochure were as accurate as possible at the time of publication. For the most current product information and changes, please visit our website at www.fleetwood.com or contact your local Fleetwood dealer. Subsequent refinements may be evident in the actual product. Prices and specifications are subject to change without notice. All weights, fuel, liquid capacities and dimensions are approximate. Fleetwood has designed its recreational vehicles to provide a variety of uses for its customers. Each vehicle features optimal seating, sleeping, storage and fluid capacities. The user is responsible for selecting the proper combination of loads to ensure that the recreational vehicle's capacities are not exceeded.

FLEETWOOD RV

America's Favorite Recreational Vehicles

Fleetwood Enterprises, Inc., RV Marketing, P.O. Box 7638, Riverside, CA 92513-7638

Your local Fleetwood RV dealer is:



Interior & Exterior Colors

Your motor home takes you to new adventures every day.

And since this home will be an enduring part of your life, we offer a selection of colors and textures that are a fine blend of classic and contemporary style.

We search to obtain quality fabrics that are elegant, yet durable, to keep up with your active lifestyle.

Year after year, the look will be as welcoming to you as it is to your guests.

Hunt Club



Celadon Mist



Smokey Quartz



FLEETWOOD FAMILY FUN... THE JOURNEY CONTINUES

Where do you want to be? The possibilities are almost limitless. From mini motor homes to luxury coaches, from gas to diesel performance, there's a Fleetwood motor home to fulfill your dreams.

We know exactly how you feel, realizing there's a whole new world to experience. That's why we made sure you can choose from the broadest selection of brands and floor plans the world has to offer. It's no wonder that one out of four motor homes sold is a Fleetwood.*

This is your journey. Take it for a spin.

*According to Statistical Surveys Jan.'99–Dec.'99

FLEETWOOD RV

© 2000 Fleetwood Enterprises, Inc.
Inventory Control Number BD01B1/1st Edition 7/00

