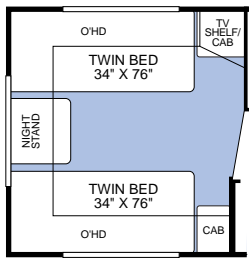




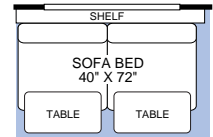
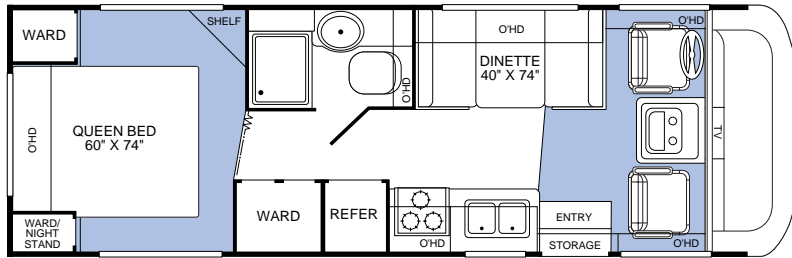
# FIESTA

*Experience A New Beginning*





OPT. 835  
TWIN BEDS W/NIGHTSTAND

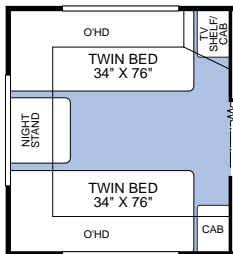


OPT. 808  
CONVERTIBLE SOFA W/TABLES

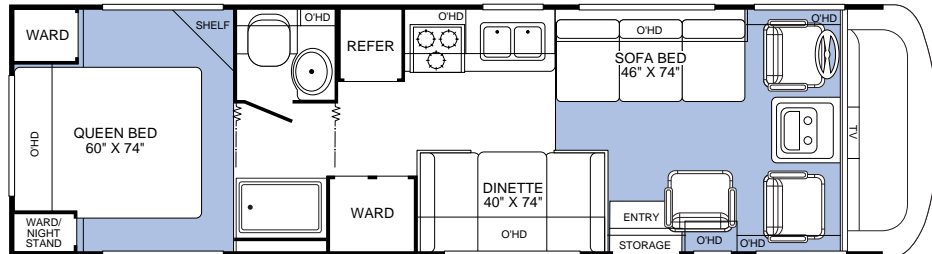
- Dinette
- Spacious Wardrobe
- Queen Bed with Under Bed Storage
- Optional Twin Bed
- Optional Sofa with Tables

- Fully Enclosed Bathroom with Residential-Style Door
- Draw-Tite® Trailer Hitch
- Large, Pass-Through Storage Compartment

*Model 26Y*



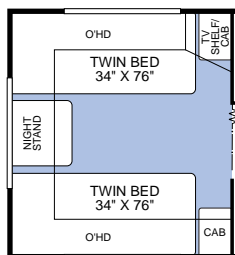
OPT. 835



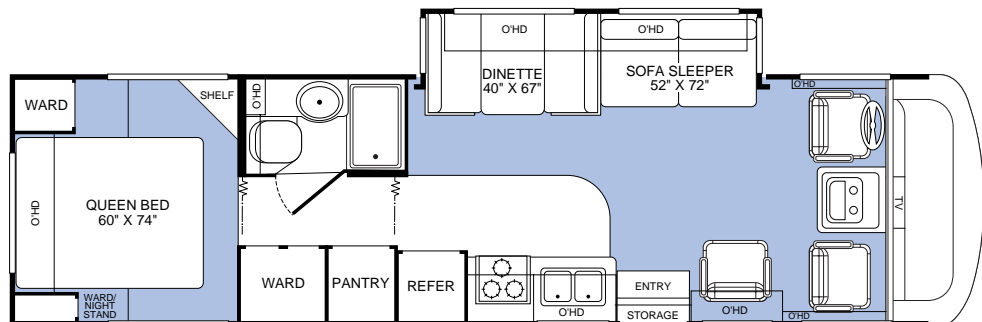
- Sofa Bed and Lounge Chair
- Dinette
- Spacious Wardrobe
- Queen Bed with Under Bed Storage
- Optional Twin Bed

- Residential-Style Bathroom Door
- Private Toilet and Lavy
- Draw-Tite® Trailer Hitch
- Large, Pass-Through Storage Compartment

*Model 31H*



OPT. 835



- Living Room Slide-Out with Sofa Sleeper and Dinette
- Swivel Chair
- Spacious Wardrobe
- Spacious Pantry
- Queen Bed with Under-Bed Storage

- Optional Twin Beds
- Fully Enclosed Bathroom with Residential-Style Door
- E-Z Store Storage
- Draw-Tite® Trailer Hitch
- Large, Pass-Through Storage Compartment

*Model 32S*

# Standard Features

## Appliances

- Systems Monitor Panel
- Marine Toilet
- Single-Lever Galley Faucet
- Video Control Box
- Telephone Jack
- 12V Power Jack

## Body Structure

- 2" Vacu-bond® Floor
- Vacu-bond® Walls with High Gloss Tuff Coat Smooth Exterior Fiberglass
- Radius Roof with Ducted A/C and Flat Ceiling
- Steel Floor/Wall/Ceiling Framing

## Electrical

- Patio Receptacle
- 120V/12V AC/DC Converter/Central Electrical Panel with Charger
- Water Pump Switch
- 4.0kW Onan® Generator
- 30 AMP Service
- 12V Deep Cycle House Battery
- VCR Ready
- Rear TV Receptacle

## Exterior

- Two-Piece Fiberglass Front Cap
- One-Piece Swing-Down Engine Access Door

- UV Resistant ABS Front/Rear Wheel Well Trims
- Deadbolt Latch on Entry Door
- Slider Windows Throughout
- Roof Ladder
- Exterior Entry Assist Handle
- Exterior Rear View Mirrors
- TV Antenna with Booster
- Park Cable Receptacle
- Awning Rail/Drip Molding (Both Sides)
- Power Entry Step
- Amber Porch Light
- 2" "Colorway" Graphics to Match Decor

## Exterior Automotive & Electrical

- Automotive Undercoating
- Stainless Steel Wheel Simulators
- Valve Extenders on Rear Wheels
- Trailer Hitch\* with 7-Point Electrical Hook-up
- Halogen Headlights with Polycarbonate Lens
- Rear Wall Mounted Spare Tire
- Dual Battery Charge Control

## Exterior Storage

- Insulated Luggage Doors
- Large Lighted Pass-Through Exterior Storage Compartment

## Interior

- 2 Interior Decors
- Skylight in Tub/Shower
- Carpet Pad
- Vinyl Floor Covering in Lavy/Galley
- Wood Drawers
- Roller Guide Drawer Slides with Transit Ship Locks
- Brass Finished Cabinet Hardware
- Innerspring Mattress
- Molded ABS Tub/Shower
- Raised Panel, Alder Wood Cabinet Doors
- Sink Cutting Board
- Large White Double Sink at Galley
- 20" Panasonic® TV in Front Dash
- Model 26Y Furnace BTU-25M
- Model 31H Furnace BTU-35M
- Model 32S Furnace BTU-35M
- 6-Gallon Quick-Recovery Water Heater with D.S.I.
- 3-Burner Range
- Single Front Roof A/C
- Microwave with Built-in Range Hood & Light
- 6-cu. ft. Dometic® Refrigerator
- On-Demand Water Pump with Filter
- Power Bath Vent

## Interior Automotive

- Intermittent Wiper Control System

- Double Swivel Sun Visors with Map Pockets
- Engine Cover Convenience Tray
- Cruise Control
- AM/FM Radio with CD and Electronic Tuning
- Tilt Steering Wheel
- Auxiliary Start Circuit
- Battery Disconnect System
- Denso® A/C Heater Combo
- Radio Switch—Main/Auxiliary
- Driver/Passenger Captain's Chairs with Reclining Back and Side Controls
- 3-Point Seat Belts at Driver and Passengers' Seats

## Interior Lighting

- Incandescent Lighting
- Make-up Lights in Bath

## Platform Construction

- Raised Floor Configuration
- Roto Cast Luggage Compartments

## Safety Equipment

- Smoke Detector/Alarm
- LPG Detector/Alarm
- CO Detector/Alarm
- Fire Extinguisher
- Seat Belts at Designated Seating Positions

# Specifications

— Workhorse® —      — Ford® —

Workhorse®/Ford® Chassis	26Y	31H	32S	31H	32S
Engine Liters	8.1L	8.1L	8.1L	6.8L	6.8L
Wheelbase	158.5	190	208	190	208
GVWR (lbs.) (1)	15,000	15,000	17,000	15,700	18,000
Front GAWR (lbs.) (2)	6,000	6,000	6,000	7,000	7,000
Rear GAWR (lbs.) (2)	11,000	10,000	11,000	11,000	11,000
Base Weight (lbs.) (3)	10,664	12,159	13,505	13,040	14,005
GCWR (lbs.) (4)	18,500	18,500	20,500	20,700	23,000
Hitch Rating Weight (lbs.)*	3,500	3,500	3,500	5,000	5,000
Tongue Weight (lbs.)*	350	350	350	500	500
Fuel Capacity (gal.)	60	75	75	75	75
<b>Dimensions and Capacities</b>	<b>26Y</b>	<b>31H</b>	<b>32S</b>		
Overall Length (5)		26' 10"	31' 3"	32' 9"	
Overall Height (with A/C)		11' 4"	11' 4"	11' 4"	
Overall Width (maximum) (6)		102"	102"	102"	
Interior Height (maximum)		79"	79"	79"	
Interior Width (maximum)		96"	96"	96"	
Fresh Water Holding Tank (gal.)		60	60	60	
Grey Water Holding Tank (gal.)		37	48	45	
Black Water Holding Tank (gal.)		30	38	38	
Appliance LPG Tank (gal.) (WC) (7)		14	25	14	
Water Heater Tank (gal.)		6	6	6	
<b>Sleeping Accommodations</b>	<b>26Y</b>	<b>31H</b>	<b>32S</b>		
Sofa Bed	N/A	46" x 74"	52" x 72"		
Dinette		40" x 74"	40" x 74"	40" x 67"	
Queen Bed		60" x 74"	60" x 74"	60" x 74"	

## Liquid Weight Reference

Water (gal.) = (8.3 lbs./3.8 kgs.)

Fuel (gal.) = (6.1 lbs./2.8 kgs.)

LPG (gal.) = (4.2 lbs./1.9 kgs.)

## Metric Conversion

Multiply pounds x 0.453 to obtain kilograms

Multiply gallons x 3.785 to obtain liters

# Options

	26Y	31H	32S
8-cu. ft. Double-Door Refrigerator AC/Gas	OPT	OPT	OPT
3-Burner Range w/Oven	OPT	OPT	OPT
Fan-tastic® Power Roof Vent	OPT	OPT	OPT
Water Heater By-Pass	OPT	OPT	OPT
Electronic Climate Control With Dual A/C w/5.5kW Generator Upgrade (Recommended for extreme temperatures and high humidity conditions)	N/A	OPT	OPT
Day/Night Shades	OPT	OPT	OPT
Dual 6V Auxiliary Batteries	OPT	OPT	OPT
Holding Tank Heater	OPT	OPT	OPT
Satellite Dish	OPT	OPT	OPT
VCR-VHS	OPT	OPT	OPT
Awning—USA	OPT	OPT	OPT
Twin Beds (34" x 76") with Nightstand	OPT	OPT	OPT
Full Dash Mat	OPT	OPT	OPT

- GVWR (Gross Vehicle Weight Rating): Means the maximum permissible loaded weight of the motor home. The GVWR is equal to or greater than the sum of the unloaded vehicle weight plus the net carrying capacity.
- GAWR (Gross Axle Weight Rating): Means the maximum permissible loaded weight a specific axle is designed to carry.
- Base Weight: Means the estimated weight of the motor home without fuel, options, water, cargo or passengers.
- GCWR (Gross Combined Weight Rating): Means the value specified by the motor home manufacturer as the maximum allowable loaded weight of this motor home with its towed vehicle. Towing and braking capacities may differ. Refer to Fleetwood and chassis manufacturer manuals for complete information.
- Length taken from front bumper to rear bumper (excludes accessories).
- Excludes safety equipment and awnings.
- Tank Manufacturer's listed water capacity (WC). Actual LPG capacity is 80% of water listing as required by the safety code.

N/A: Information not available at the time of publication.

\* The chassis manufacturer recommends the installation of a supplemental brake control system to activate the brakes on the vehicle or trailer you are towing.

# Why would you buy anything else?

For every road you travel, Fleetwood has the RV to fit your high standards and lifestyle. We build the recreational vehicles America wants, accounting for nearly one out of every three RVs on the road today. How do we do it? We call it the **Fleetwood Equation**.

## Size + Service + Quality = Value!

### Size *The world's #1 RV manufacturer*

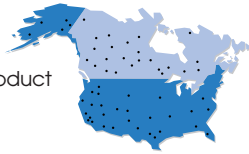
Over the past half-century, Fleetwood has grown to become the largest manufacturer of recreational vehicles in the world.

Fleetwood remains, year after year, the largest, most influential, innovative and recognized leader in the RV industry.

### Service *Listening to our customers*

With over 1,100 service dealers in the US and Canada, Fleetwood has the largest network in the RV industry.

No other RV company comes close to equaling this vital customer support system. Fleetwood RV service dealers have instant, real-time electronic access to your service records as well as parts inventory and warranty repair authorization inquiries. We also provide a 24-hour customer call center for service and product information so no matter where you travel in North America, professional support and fast answers are always nearby. Call toll free 24 hours a day: **1-800-322-8216**.



### Quality *Using only the best materials*

At Fleetwood, quality begins at the design stage so every coach is built right, right from the start. Subsequent to design approval, full-functioning prototypes are built, then punished on a test track and subjected to accelerated life cycle tests where a few weeks can equal 10 years of normal use. At the same time, components and systems are test-cycled thousands of times assuring years of problem-free use.



Once approved for production, each unit is built by skilled technicians using quality materials and components, many of which are sourced through, or manufactured by, our subsidiary companies such as Gold Shield Fiberglass and Continental Lumber Products.



Fleetwood engineers specify the very best products and appliances from companies such as Coleman®, Dometic®, Flexsteel®, Ford®, Freightliner®, Magic Chef®, Panasonic®, and Workhorse®. These companies are experts in their respective fields and play a significant role as partners, not just suppliers.

All this assures that every Fleetwood RV has the fit, finish and details required by our high standards – as well as yours.

### Value *Priced right with style and content*

At Fleetwood RV, we look at value as the sum of everything we offer.

- **Value** is our design, engineering expertise, and innovative manufacturing methods.
- **Value** is structures and components that are the best in the industry, that meet or exceed government and industry safety standards.
- **Value** is Ownercare — a one-year/three-year warranty with coverage from a company that will be around in the future to service your needs. Ownercare is one of the RV industry's most comprehensive programs and includes systems and applications, construction, no deductible and no service charge. And it is fully transferable for the first 12 months. See your nearest Fleetwood dealer for a full explanation of benefits and restrictions.
- **Value** is customer satisfaction. When asked, more experienced RV owners would recommend Fleetwood to a friend than any other brand. Fleetwood RVs consistently hold their value better than most RVs at trade-in time.



### Value is peace of mind.

**SSQV** — Size, Service, Quality, and Value. Together they equate to the very best RV you can buy, and the reason you should purchase a Fleetwood over any other brand.

**Require these features when you purchase your next RV... Fleetwood does!**

*See you on the road!*

**FLEETWOOD RV™**

**America's #1 RV Manufacturer!**

Fleetwood Enterprises, Inc. • RV Marketing • P.O. Box 7638 • Riverside, CA 92513-7638

Your local Fleetwood RV dealer is:



Join Now!  
(877) 577-2560

[www.fleetwoodrv.com](http://www.fleetwoodrv.com)

Visit our website to find a dealer near you or learn more about other Fleetwood products. Or call 1-800-444-4905.

FOR CUSTOMER ASSISTANCE, call toll free at 1-800-322-8216, visit our website, or write to Fleetwood Enterprises, Inc., P.O. Box 7638, Riverside, CA 92513-7638.

IMPORTANT—PLEASE READ: Product information, photography and illustrations included in this publication were as accurate as possible at the time of printing. For further product information and changes, please visit our website at [www.fleetwoodrv.com](http://www.fleetwoodrv.com) or contact your local Fleetwood dealer. Prices, materials, design and specifications are subject to change without notice. All weights, fuel, liquid capacities and dimensions are approximate. Fleetwood has designed its recreational vehicles to provide a variety of uses for its customers. Each vehicle features optimal seating, sleeping, storage and fluid capacities. The user is responsible for selecting the proper combination of loads (i.e. occupants, equipment, fluids, cargo, etc.) to ensure that the vehicle's capacities are not exceeded.