

*Fiesta*<sup>®</sup>  
Class A Gas

MAKING MEMORIES BY THE MILE.



 **FLEETWOOD.**

2008 FIESTA





ADVENTURE  
IS CALLING.



*The Galley* includes everything you need to prepare a feast: a 6 cu. foot refrigerator, three-burner stove, oven, microwave, large stainless steel sink, and high-rise faucet. There's even wiggle room for your toes under the cabinets, thanks to handy toe kicks.

*The Passenger Chair* is designed for comfort, with reclining back and slide controls. Sit back with the footrest and you have a great spot to relax and enjoy the mid-coach TV.



FIESTA



*The Fiesta 34B (shown in Cabernet interior décor with Windsor Birch cabinetry) is made for entertaining, with a large 32" LCD HDTV in the center of the coach.*



*The Overhead Galley Cabinetry has a stylish design, with satin nickel hardware and hidden hinges. The adjustable shelves are large enough for full-size plates and lined to protect your dishes in transit.*



THE COMFORTS OF HOME.  
THE FREEDOM TO ROAM.



*The Bunk Beds* (34B model only) provide a cozy place to sleep or hang out. Each bunkmate can have their own optional flip-down TV screen with inputs for portable DVD or video game players.



*The Bedroom* features a cushiony, queen-size innerspring mattress and overhead storage for books and more. Catch up on your reading by the adjustable lights and set your drink upon his/her nightstands.



*The Wardrobe* is residential size, which means plenty of space for your clothes and shoes. Before you head out, check your look in the full-length mirrored doors. Watch your favorite show from your comfy bed with the optional 19" LCD HDTV.

## DECORATE WITH EASE.

*Personalizing your Fiesta is a snap. Pick your favorite fabric palette, and then select your wood finish.*

### Lake

Living/Dining Room



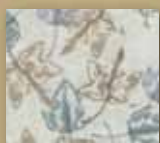
Dinette  
Cushions



Sofa



Ultraleather™  
Driver & Front  
Passenger Seats



Bedspread &  
Headboard



Headboard &  
Pillow Shams

### Pebble Beach

Living/Dining Room



Dinette  
Cushions



Sofa



Ultraleather™  
Driver & Front  
Passenger Seats



Bedspread &  
Headboard



Headboard &  
Pillow Shams

### Cabernet

Living/Dining Room



Dinette  
Cushions



Sofa



Ultraleather™  
Driver & Front  
Passenger Seats



Bedspread &  
Headboard



Headboard &  
Pillow Shams

### Wood Finishes



Plantation Cherry



Windsor Birch

## WHATEVER COLOR YOU CHOOSE, YOU'RE SURE TO TURN HEADS.

*The interior and exterior color palettes are tied together, so the overall look is coordinated.*

### Lake



### Pebble Beach

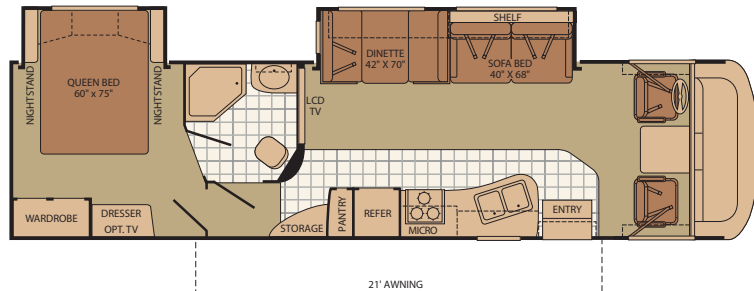


### Cabernet



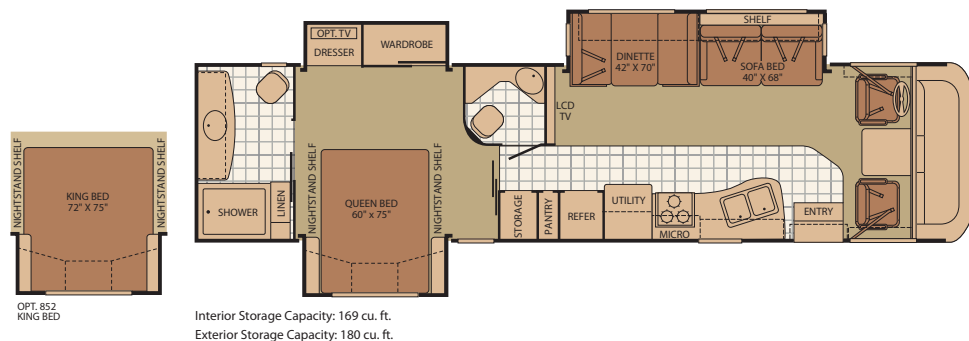


- 33L** • Mid-coach home theater with 32" LCD HDTV  
 • Side aisle floor plan provides large bathroom and extra bedroom privacy

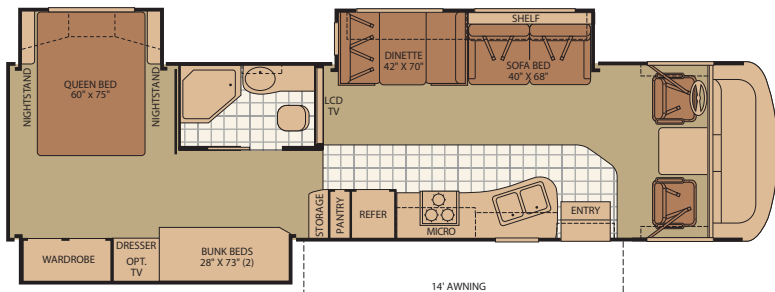


Interior Storage Capacity: 134 cu. ft.  
 Exterior Storage Capacity: 155 cu. ft.

- 36T** • Mid-coach home theater with 32" LCD HDTV  
 • Bath and a half floor plan for maximum usability



- 34B** • Mid-coach home theater with 32" LCD HDTV  
 • Triple slide floor plan with bunk beds



Interior Storage Capacity: 144 cu. ft.  
 Exterior Storage Capacity: 167 cu. ft.



**Pass-Through Storage** lets you access your stuff from either side of the motor home. With several extra large compartments, you don't have to trim your packing list.

#### DIMENSIONS & CAPACITIES

| MODELS   | 33L    | 34B    | 36T    |
|--|--------|--------|--------|
| Overall Length <sup>4</sup>                    | 33' 7" | 35' 7" | 37' 7" |
| Overall Height (with A/C)                      | 12' 0" | 12' 0" | 12' 0" |
| Overall Width (maximum) <sup>5, 6</sup>        | 102"   | 102"   | 102"   |
| Interior Height (maximum)                      | 79"    | 79"    | 79"    |
| Interior Width (maximum)                       | 96"    | 96"    | 96"    |
| Fresh Water Holding Tank (gal)                 | 50     | 50     | 85     |
| Grey Water Holding Tank (gal)                  | 40     | 40     | 40     |
| Black Water Holding Tank (gal)                 | 30     | 30     | 30     |
| Appliance Propane Tank (gal) (WC) <sup>7</sup> | 25     | 25     | 25     |
| Water Heater Tank (gal)                        | 6      | 6      | 6      |

#### CHASSIS

**Model:** Ford®/Workhorse™  
**Engine:** 6.8L Triton V10/8.1L Vortec™ V8  
**Torque:** 457 lb-ft @ 3250 RPM/455 lb-ft @ 3200 RPM  
**Alternator:** 130 Amp/145 Amp  
**Transmission:** Ford®, 5-Speed Automatic w/Overdrive  
 Workhorse™, 6-Speed Automatic w/Overdrive  
**Horsepower:** 362HP/340HP

#### FORD® CHASSIS / WORKHORSE™ CHASSIS

| MODELS                                 | 33L           | 34B           | 36T           |
|--|---------------|---------------|---------------|
| Engine Displacement (Liters)           | 6.8/8.1       | 6.8/8.1       | 6.8/8.1       |
| Wheelbase (Inches)                     | 208"/208"     | 228"/228"     | 228"/228"     |
| GVWR (lbs) <sup>1</sup>                | 20,500/22,000 | 20,500/22,000 | 22,000/22,000 |
| Front GAWR (lbs) <sup>2</sup>          | 7,000/8,000   | 7,000/8,000   | 7,500/8,000   |
| Rear GAWR (lbs) <sup>2</sup>           | 13,500/14,500 | 13,500/14,500 | 14,500/14,500 |
| GCWR (lbs) <sup>3</sup>                | 25,500/26,000 | 25,500/26,000 | 26,000/26,000 |
| Hitch Rating Weight (lbs) <sup>1</sup> | 5,000/5,000   | 5,000/5,000   | 5,000/5,000   |
| Tongue Weight (lbs) <sup>1</sup>       | 500/500       | 500/500       | 500/500       |
| Fuel Capacity (gal)                    | 75/75         | 75/75         | 75/75         |

Liquid Weight Reference: Water (gal) = (8.3 lbs/3.8 kgs) Fuel (gal) = (6.1 lbs/2.8 kgs)  
 Propane (gal) = (4.2 lbs/1.9 kgs)

Metric Conversion: Multiply pounds x 0.453 to obtain kilograms. Multiply gallons x 3.785 to obtain liters. Multiply liters x 61 to obtain cubic inches.

## STANDARD FEATURES

### INTERIOR

#### INTERIOR THROUGHOUT

- 15,000 BTU Ducted Air Conditioner
- 3 Interior Décor's
- 34,000 BTU Furnace
- 6 Gallon Quick Recovery Water Heater w/Direct Spark Ignition
- Battery Disconnect System
- Automotive A/C Heater Combo
- TuffPEX Plumbing System
- Deluxe Roller Bearing, Full Extension Drawer Guides
- Radius Edged Cabinet Doors & Drawer Fronts
- Hidden Cabinet Door Hinges
- On Demand Water Pump w/Filter
- Systems Monitor Panel
- 120V/12V AC/DC Converter
- Central Electrical Panel w/Charger
- Energy Management System
- Wall Mounted Heat Registers
- Water Heater Bypass

#### DRIVER CONVENIENCE

- 3 Point Seat Belts at Driver & Front Passenger Seats
- AM/FM Radio w/CD & Electronic Tuning
- Auxiliary Start Circuit
- Cruise Control
- Double Swivel Sun Visors w/Map Pockets
- Driver Captain's Chair w/Reclining Back/Slide Controls
- Passenger Chair w/Reclining Back/Slide Controls/Footrest/Adjustable Armrests
- Intermittent Wiper Control
- Radio Switch Main/Auxiliary Power
- Tilt Steering Wheel
- Telephone Jack
- 12V Power Jack

### LIVING ROOM

- 32" LCD HDTV Mid-Coach Location
- Day/Night Pleated Shades
- Video Control Box
- Flexsteel® Furniture
- Vinyl Floor Covering in Lavy/Galley/Entry

### GALLEY

- 6 cu. ft. Dometic® Refrigerator
- 3 Burner Range w/Oven
- 30" Microwave
- Fan-Tastic® Power Roof Vent
- Satin Nickel Cabinet Hardware
- Large Stainless Steel Double Sink
- High Rise Faucet
- Wood Drawer Construction

### BEDROOM

- Wardrobe w/Mirrored Sliding Doors
- Innerspring Mattress
- Rear TV Receptacle
- TV Shelf w/Cable Jack (TV not included)
- Adjustable Reading Lights

### BATHROOM

- Marine Toilet
- Molded ABS Shower/Tub w/Surround
- Power Bath Vent
- Skylight in Tub/Shower
- Glass Shower Door
- Medicine Cabinet w/Adjustable Shelves
- Vanity Lights

### SAFETY/CONVENIENCE

- 10 ABC Fire Extinguisher
- Carbon Monoxide Detector/Alarm
- Propane Detector/Alarm
- Smoke Detector/Alarm
- Entry Grab Handle
- Child Safety Tether
- Multiple Seatbelt Locations

### EXTERIOR

#### EXTERIOR THROUGHOUT

- 3 Colorway Graphics to Match Décor
- 30 Amp Service
- 4.0 kW Onan® MicroQuiet Generator
- Amber Porch Light
- Awning Rail/Drip Molding (Both Sides)
- Exterior Wash Unit
- Power/Heated Rear View Mirrors
- Full Basement Configuration
- Dometic® Patio Awning
- Radius Entry Door
- Roof Ladder
- TV Antenna w/Signal Booster
- ABS Front/Rear Wheel Well Trims
- 4 Point Automatic Levelers
- Dual 6V Deep Cycle 217 Amp Auxiliary Batteries

#### AUTOMOTIVE

- Halogen Headlights w/Polycarbonate Lens
- Rear Fuel Fill
- Trailer Hitch w/7 Pin Electrical Hook-Up†
- 5,000 lb. Towing Capacity†
- Stainless Steel Wheel Simulators

#### SAFETY/CONVENIENCE

- Deadbolt Latch on Entry Door
- Dual Battery Charge Control
- High Mounted Taillights
- Entry Assist Handle
- One-Piece Swing-Down Engine Access Door
- Park Cable Receptacle
- Patio Receptacle
- Power Entry Step
- Automotive Safety Glass
- Daytime Running Lights
- Hydraulic 4 Wheel Disk Brakes w/4 Wheel Anti-Lock Brakes

### BODY STRUCTURE

- Aluminum Interlocking Floor/Wall/Ceiling Framing
- Vacu-bond® Floor and Ceiling
- Vacu-bond® Walls w/Smooth High Gloss Exterior Tuff-Coat® Fiberglass
- Fiberglass Front/Rear Cap
- Windshield Bonded to Fiberglass Front Cap
- One-Piece Royal Tuff-Ply Radius Roof

#### STORAGE

- Large, Exterior Pass-Through Storage Compartments
- Lighted Luggage Compartments
- Insulated, Side-Swing Luggage Doors
- Rotomolded Polyethylene Luggage Compartments
- Continuous One-Piece Compartment Bulb Seal

## OPTIONS

### INTERIOR

- High Efficiency Ducted Dual Air Conditioners
- Sirius Satellite Radio® (6 Month Subscription Included)
- DVD Player
- 8 cu. ft. Dometic® Refrigerator
- 19" LCD HDTV
- King Bed (Select Models)

### EXTERIOR

- 30 Amp EMS w/5.5kW Generator/Dual A/C
- 50 Amp EMS w/5.5kW Generator/Dual A/C
- Spare Tire

## FLEETWOOD ADVANTAGES

- Pass-Through Basement Storage with Side-Swing Door for Easy Access
- Exciting Floor Plans with Mid-Coach 32" LCD HDTV
- Ultra High Gloss Fiberglass Walls for Striking Looks
- Interlocking Floor-to-Sidewall Construction for Improved Fit, Finish and Integrity

1. GVWR (Gross Vehicle Weight Rating) is the maximum permissible weight of this fully loaded motor home. The GVWR is equal to or greater than the sum of the (UVW) unloaded vehicle weight plus the (CCC) cargo carrying capacity\*.
2. GAWR (Gross Axle Weight Rating) is the maximum permissible loaded weight a specific axle is designed to carry.
3. GCWR (Gross Combined Weight Rating) is the value specified by the motor home manufacturer as the maximum allowable loaded weight of this motor home with its towed vehicle. Towing and braking capacities may be different. Refer to Fleetwood and chassis manufacturer's manuals for complete information.
4. Length measured from front bumper to rear bumper (excludes accessories).
5. Excludes safety equipment and awnings.
6. Motor homes feature a body-width over 96" which will restrict your access to certain roads. Before purchasing, you should research any state and/or province road laws which may affect your usage.
7. Tank manufacturer's listed water capacity (WC). Actual propane capacity is 80% of water listing as required by the safety code.

† The chassis manufacturer recommends the installation of a supplemental brake control system to activate the brakes on the vehicle or trailer you are towing. Hitch receiver ratings expressed are maximum for the hitch receiver installed and may require the purchase of additional equipment that is dependent on the weight of the towed load. Consult with hitch receiver manufacturer for further information.

N/A = not available at time of printing.

\* UVW and CCC are found on the cargo carrying capacity label in each RV.

IMPORTANT — PLEASE READ: Product information, photography and illustrations included in this publication were as accurate as possible at the time of printing. For further product information and changes, please visit our website at [www.fleetwoodrv.com](http://www.fleetwoodrv.com) or contact your local Fleetwood dealer. Prices, materials, design and specifications are subject to change without notice. All weights, fuel, liquid capacities and dimensions are approximate. Fleetwood has designed its recreational vehicles to provide a variety of uses for its customers. Each vehicle features optimal seating, sleeping, storage and fluid capacities. The user is responsible for selecting the proper combination of loads (i.e. occupants, equipment, fluids, cargo, etc.) to ensure that the vehicle's capacities are not exceeded.



#### RV OWNERCARE\*

Limited one-year/15,000-mile coach warranty and three-year/50,000-mile structural warranty, whichever occurs first, and it is fully transferable for the first 12 months. RV OWNERCARE is one of the RV industry's most comprehensive programs and includes systems, appliances, components and construction, with no deductible and no service charge. RV OWNERCARE coverage is provided from a company that will be around in the future to service your needs. See your nearest Fleetwood dealer for a full explanation of benefits and restrictions.

#### CONTACT US

To locate a dealer near you, visit our website at [www.fleetwoodrv.com](http://www.fleetwoodrv.com) or call 1-800-444-4905. We can also be contacted at Fleetwood Customer Relations, P.O. Box 1007, Decatur, IN 46733.

#### FLEETWOOD TRAVELCADE CLUB

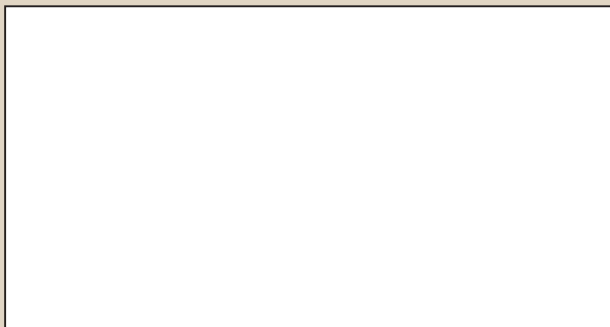
As a Fleetwood owner, you're eligible to become a member of the Fleetwood Travelcade Club. It's a perfect way to meet other Fleetwood owners who love to travel across America and share in the RV lifestyle. Call (877) 577-2560, or visit our website at [www.fleetwoodrv.com/owners\\_clubs](http://www.fleetwoodrv.com/owners_clubs) to learn more, and join the fun.



treadlightly!  
LEAVING A GOOD IMPRESSION



YOUR LOCAL FLEETWOOD DEALER IS:



\*For complete info see your Fleetwood dealer.

©2007. Fleetwood Enterprises, Inc.  
Printed in the USA. Inventory Control Number F108B1, 11/07.  
Model Year 2008, First Edition.

#### IMPORTANT—PLEASE READ

Product information, photography and illustrations included in this publication were as accurate as possible at the time of printing. For further product information and changes, please visit our website at [www.fleetwoodrv.com](http://www.fleetwoodrv.com) or contact your local Fleetwood dealer. Prices, materials, design and specifications are subject to change without notice. All weights, fuel, liquid capacities and dimensions are approximate. Fleetwood has designed its recreational vehicles to provide a variety of uses for customers. Each vehicle features optimal seating, sleeping, storage and fluid capacities. The user is responsible for selecting the proper combination of loads (i.e. occupants, equipment, fluids, cargo, etc.) to ensure that the vehicle's capacities are not exceeded.

### WHY FLEETWOOD?



#### Quality

There's no cutting corners. Skilled craftsmen build every Fleetwood RV for maximum durability and longevity.



#### Trust

More people trust Fleetwood. After all, we've spent over 50 years perfecting RVs, earning the loyalty of generations of RVers.



#### Passion

We're truly passionate about the RV lifestyle. Fleetwood was founded by RV enthusiasts, and that tradition continues today.



#### Safety

You've got precious cargo. So we've engineered dozens of innovative safety features into our motor homes to give you more peace of mind.



#### Service

Help is nearby. When you need an upgrade or repair, you'll find facilities all across North America and more than 1,100 dealers ready to assist you.



#### Warranty

Exclusive RV ownercare warranty. See your Fleetwood dealer for details.

 **FLEETWOOD**  
*Driven to Explore*