

Segment Buster Motor Home

Huge Towing Capacity  
Available W24 Chassis

Standard Full Body Paint

Rock the Box Sound System

KVH Auto Tracking Satellite Dome

Shockin' Blue & Alloy decor



Fiesta®





## Available W24 Workhorse™ Chassis

A true workhorse of a chassis: 340HP, 455 pounds of torque, 6-speed Allison tranny.

Carries up to 6,000 pounds<sup>†</sup> of stuff or tow up to 8,000 pounds...grrrrrrrr

<sup>†</sup> The chassis manufacturer recommends the installation of a supplemental brake control system to activate the brakes on the vehicle or trailer you are towing. Hitch receiver ratings expressed are maximum for the hitch receiver installed and may require the purchase of additional equipment that is dependent on the weight of the towed load. Consult with hitch receiver manufacturer for further information.

## Customize Your X2 With These Options

- Shocking Blue Interior
- Alloy Interior
- "Rock the Box" Package: Kenwood® Radio, Amplifier, Sub-Woofer and Speakers
- Entertainment Package: KVH Auto Tracking Satellite Dish, Sharp® 26" LCD HDTV, Sharp® 15" LCD HDTV, Yamaha® Home Theater System with Ceiling Speakers and Sub-Woofer, and Pullout Sharp® 20" LCD HDTV on the Exterior
- Exterior Component Package: 5' Table, Recessed Lights, Spotlight on Roof, Checkered Flag Awning, Brake Controller and FAT Roof Access Ladder and Extension
- W24 Workhorse™ Chassis with up to 8,000 lb. Towing Capacity<sup>†</sup>
- Fresh Water Capacity of 129 Gallons



**Sharp®  
LCD TV**

High definition, high resolution, 16:9 aspect ratio, 177 degree viewing angle; can you spell awesome picture!!



## Remote Control Spotlight

Spot the choice camping site when arriving after dark.

## Exterior Graphics



**BAD BLUE**



**RADICAL RED**



**SATIN STEEL**



**HOT YELLOW**

## Awesome Front and Rear Caps



### "Rock the Box" Kenwood® Exterior Sound System

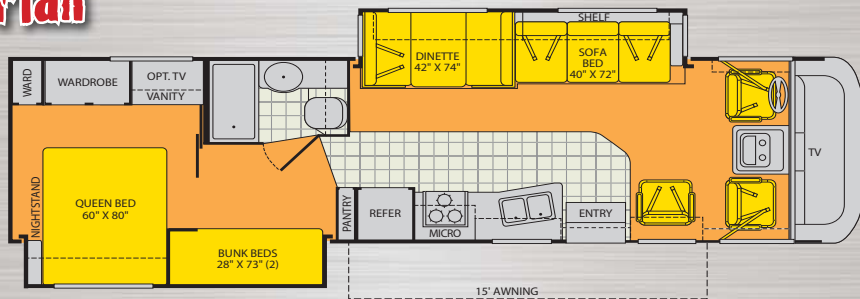
720 watt Kenwood® system with satellite speakers and sub-woofer... ensures you are heard.

### Checkered Flag Awning

Race inspired checkered flag awning looks sweet and matches the trailer.



# 34N Floor Plan



Interior Storage Capacity: 191 cu. ft.  
Exterior Storage Capacity: 152 cu. ft.

## Chassis

MODEL: FORD®/WORKHORSE™

ENGINE: 6.8L Triton V10/8.1L Vortec™ V8

TORQUE: 457 lb-ft @ 3250 RPM /455 lb-ft @ 3200 RPM

ALTERNATOR: 130 Amp/145 Amp

TRANSMISSION: Ford®, 5-Speed Automatic w/Overdrive  
Workhorse™, 6-Speed Automatic w/Overdrive

HORSEPOWER: 362HP/340HP

## Specifications

CHASSIS	FORD®	WORKHORSE™	W24
Engine Displacement (Liters)	6.8	8.1	8.1
Wheelbase (Inches)	228"	228"	228"
GVWR (lbs) <sup>1</sup>	22,000	21,200	22,000
Front GAWR (lbs) <sup>2</sup>	7,500	7,500	9,000
Rear GAWR (lbs) <sup>2</sup>	14,500	14,500	15,500
Base Weight (lbs) <sup>3</sup>	16,500	16,350	17,100
GCWR (lbs)	26,000	26,000	30,000
Hitch Rating Weight (lbs) <sup>†</sup>	5,000	5,000	8,000
Tongue Weight (lbs)	500	500	800
Fuel Capacity (gal)	75	75	75

### DIMENSIONS & CAPACITIES

Overall length <sup>5</sup>	35' 7"	35' 7"	35' 7"
Overall Height (with A/C)	12' 5"	12' 5"	12' 5"
Overall Width (maximum) <sup>6, 7</sup>	102"	102"	102"
Interior Height (maximum)	79"	79"	79"
Interior Width (maximum)	96"	96"	96"
Fresh Water Holding Tank (gal)	85 (129 opt.)	85 (129 opt.)	85 (129 opt.)
Grey Water Holding Tank (gal)	58	58	58
Black Water Holding Tank (gal)	42	42	42
Appliance Propane Tank (gal) (WC) <sup>8</sup>	25	25	25
Water Heater Tank (gal)	6	6	6

Liquid Weight Reference: Water (gal) = (8.3 lbs/3.8 kgs) Fuel (gal) = (6.1 lbs/2.8 kgs)  
Propane (gal) = (4.2 lbs/1.9 kgs)

Metric Conversion: Multiply pounds x 0.453 to obtain kilograms. Multiply gallons x 3.785 to obtain liters. Multiply liters x 61 to obtain cubic inches.

- GVWR (Gross Vehicle Weight Rating) is the maximum permissible weight of this fully loaded motor home. The GVWR is equal to or greater than the sum of the (UVW) unloaded vehicle weight plus the (CCC) cargo carrying capacity\*.
  - GAWR (Gross Axle Weight Rating) is the maximum permissible loaded weight a specific axle is designed to carry.
  - Base Weight is the estimated weight of the motor home without fuel, options, water, cargo or passengers.
  - GCWR (Gross Combined Weight Rating) is the value specified by the motor home manufacturer as the maximum allowable loaded weight of this motor home with its towed vehicle. Towing and braking capacities may be different. Refer to Fleetwood and chassis manufacturer's manuals for complete information.
  - Length measured from front bumper to rear bumper (excludes accessories).
  - Excludes safety equipment and awnings.
  - Motor homes and toy haulers feature a body-width over 96" which will restrict your access to certain roads. Before purchasing, you should research any state and/or province road laws which may affect your usage.
  - Tank manufacturer's listed water capacity (WC). Actual propane capacity is 80% of water listing as required by the safety code.
- † The chassis manufacturer recommends the installation of a supplemental brake control system to activate the brakes on the vehicle or trailer you are towing. Hitch receiver ratings expressed are maximum for the hitch receiver installed and may require the purchase of additional equipment that is dependent on the weight of the towed load. Consult with hitch receiver manufacturer for further information.

N/A = Not Applicable.

**IMPORTANT—PLEASE READ** Product information, photography and illustrations included in this publication were as accurate as possible at the time of printing. For further product information and changes, please visit our website at [www.fleetwoodrv.com](http://www.fleetwoodrv.com) or contact your local Fleetwood dealer. Prices, materials, design and specifications are subject to change without notice. All weights, fuel, liquid capacities and dimensions are approximate. Fleetwood has designed its recreational vehicles to provide a variety of uses for customers. Each vehicle features optimal seating, sleeping, storage and fluid capacities. The user is responsible for selecting the proper combination of loads (i.e.: equipment, fluids, cargo, etc.) to ensure that the vehicle's capacities are not exceeded.