

2008 ICON

Modern luxury meets fuel efficiency.
WE CALL IT ICON. YOU'LL CALL IT AMAZING.

ICON[™]

REDEFINING THE WAY YOU TRAVEL.



BY  **FLEETWOOD**



2008 ICON



REDEFINING THE WAY YOU TRAVEL. **ICON.**

Icon 24D shown in Tiki Bar interior décor with Jackson Cherry wood cabinetry.



A Contemporary rope lighting shows off the curve of the Jackson Cherry veneer cabinetry and enhances the mood.

Cover vehicle shown in Silver Pearl full-body paint.

20 08⁺

A FEAT OF ENGINEERING, PACKED WITH DESIGNER STYLE.

The new Icon breaks the mold by combining luxury, fuel efficiency and drivability. With a nimble chassis powered by Mercedes-Benz®, you'll find it handles more like a fine automobile. While its living quarters are remarkably spacious, thanks to expansive slide-outs for a vehicle of this size. However, Icon's top trait may be its visually arresting style.

B

Take a break from your drive lounging in the roomy cabover area. When not in use, it tilts up to provide even more headroom for the driver.



WHY BUY ICON?

Powered by a **Mercedes-Benz®** 3.0L, 6-cylinder turbo diesel engine, Icon's core foundation is the durable Dodge® Sprinter chassis.

For an **extraordinary driving experience**, Icon offers agile handling, increased fuel efficiency and outstanding comfort.

With its **contemporary interior styling** and clean lines, Icon has been created for connoisseurs of modern design.

The **bold exterior styling** makes a statement on the road or in the driveway.

The DuPont® **full-body paint** application is meticulously applied in two stages for the finest appearance and reflects a very upscale image.



A



B



C



- A** The modern cabinetry design carries over to the dinette, which seats four people comfortably in front of a large window.
- B** At night, the dinette can transform into a comfortable bed with a sleek headboard and footboard.
- C** The galley contains an Apollo Half Time Convection Oven, which cooks food in half the time of a conventional oven, and doubles as a microwave. Coupled with a 3-burner cooktop and refrigerator/freezer, you'd think you were in a chic urban condo.

A LOT OF FUNCTIONALITY PACKED IN A COMPACT SPACE.

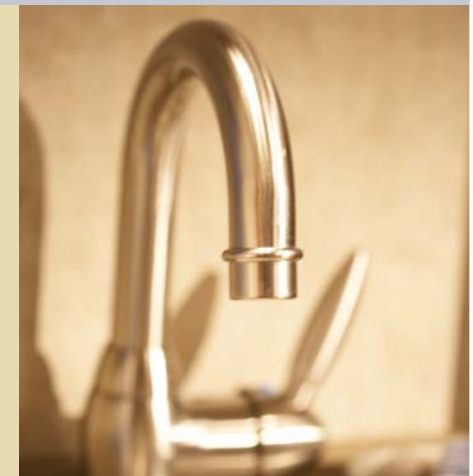
To make the most of Icon's size, we've combined smart, ergonomic space and top-of-the-line components. Best yet, we've done it in high-end style. Every room is fully equipped and dressed up with brushed nickel touches, from the faucet in the galley to the robe hook in the bathroom.

D The bath offers a full shower, china toilet, and ample space for toiletries in the curved vanity and medicine cabinet.

E At the end of a long day exploring, your cushiony double bed awaits (select models). Overhead cabinetry holds your slippers, books and more.



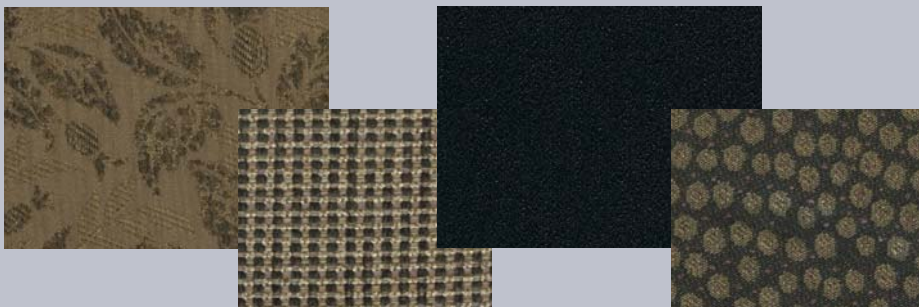
REDEFINING THE WAY YOU TRAVEL. **ICON.**



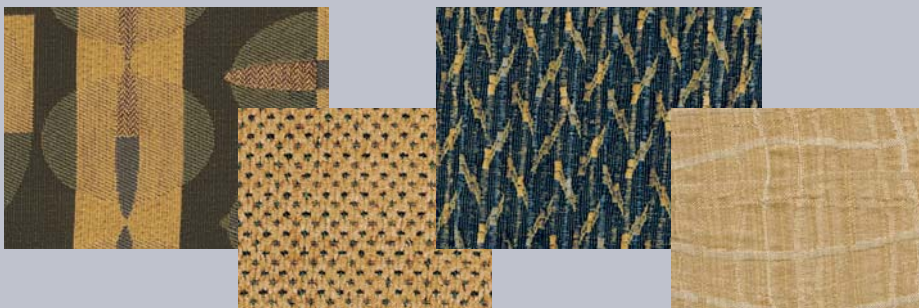
DÉCOR THAT DARES TO BE DIFFERENT.

Icon is full of innovation, and the interior décor is no exception. These smart fabrics are not only full of character, they're long-wearing and feel great to the touch.

CARBON



TIKI BAR



WOOD FINISH



Jackson Cherry

A Don't miss your favorite shows – just turn on the crystal clear 19" LCD TV wherever you are. (Standard TV location varies by model.)

B Your clothing stays neat and tidy in the spacious wardrobe, with a hanging rack to keep the wrinkles away.



REDEFINING THE WAY YOU TRAVEL. **ICON.**

ICON FULL BODY PAINT



BAD BLUE



BLUE PEARL



MINT PEARL



A BOLD LOOK WITH AN AUTOMOTIVE FEEL.

At the heart of Icon lies a Dodge® Sprinter chassis, developed and built by Mercedes-Benz®. The exterior design carries bold, edgy lines to create a cohesive look with an automotive feel.

C Every detail of Icon is refined. Even the rear ladder has been redesigned and finished in brushed aluminum.

D The front cap shows Icon's automotive heritage, with a distinctive grill and sleek headlights.

A MOTORHOME THAT'S TRULY ENJOYABLE TO DRIVE.

With Icon's power, agility and high-tech cockpit, you may find the drive as enjoyable as your trip.



A



No matter what digital media format you use for music, you can play it in Icon – iPod, other MP3 players, USB, SD/memory card, you name it. And that's in addition to the CD player/AM/FM radio with streaming graphics.

A

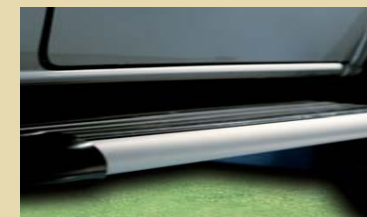
2008

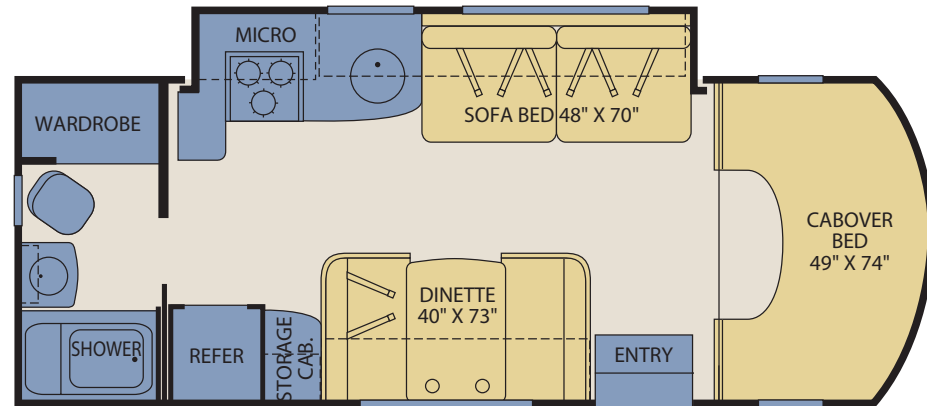
ICON



Vehicle shown in Satin Steel full body paint.

Nimble. Easy to drive. Quiet. These adjectives are not often applied to motor homes, but they describe Icon perfectly. There's very little noise or vibration while driving, and the Mercedes-Benz® diesel engine is practically silent. Icon offers powerful acceleration and responsive maneuvering capabilities. The handling has been enhanced by Adaptive ESP® technology like this is usually found in luxury performance cars. And while driving Icon is quite enjoyable, its fuel efficiency will really make you smile.





Interior Storage Capacity: 43 cu. ft.
Exterior Storage Capacity: 33 cu. ft.

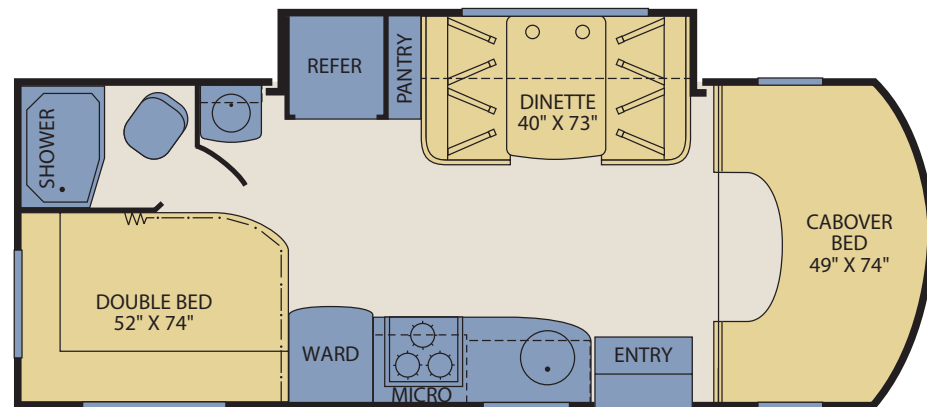
24A

FLOOR

PLANS



B The exterior storage compartment holds chairs, bulky items and more. The pass-through design allows you to access your items from either side.



Interior Storage Capacity: 49 cu. ft.
Exterior Storage Capacity: 45 cu. ft.

24D

Seatbelt configuration may vary depending on options chosen.

REDEFINING THE WAY YOU TRAVEL. **ICON.**

STANDARD FEATURES

INTERIOR

Throughout

- Corian® Solid Surface Countertops with Brushed Aluminum Accent
- Complete TuffPEX Plumbing System
- 12V Water Pump, Demand Operation
- 13,500 BTU Ducted Air Conditioner
- 25,000 BTU Furnace, Wall Mounted Thermostat
- 6 Gallon Water Heater, Electronic Ignition, Propane
- Curved Plywood, Hollow Core Doors and Integrated Face Frames
- Aircraft Style Overhead Construction with Curved Plyform Cabinet Doors and Integrated Accent Lighting
- Auxiliary Battery, Disconnect Switch on Central Monitor Panel
- Wall-to-Wall Linoleum
- Deluxe Roller Bearing, Full Extension Drawer Guides & Transit-Ship Locks
- Water Pump Controller, On/Off Switches at Galley & Lavy
- Quality Constructed Furniture by Flexsteel®
- Water Heater Bypass Valve Fresh Water System Winterization
- GFI Circuit Protection
- AC/DC Load Center w/12V Converter/Battery Charger
- Whole Coach Water Filtration System

Driver Convenience

- Dodge® Sprinter Chassis, Turbo Diesel w/Adaptive ESP®, 3.0L CDI 6-Cylinder, 154HP, Automatic 5-Speed Transmission, Independent Front Suspension
- 3 Point Seat Belts at Driver & Front Passenger Seats
- In-Dash AM/FM/Radio w/CD, iPod Cable w/Full Controls, Aux Input on Face, MP3/WMA, USB Slot, SD/Memory Card Input, Remote Control
- Power Windows & Door Locks
- Driver/Front Passenger Airbag Supplemental Restraint System
- Driver/Front Passenger Adjustable/Reclining Bucket Seats w/Armrest and Comfort Headrest
- Cockpit Area w/Tilt Wheel, Cruise Control, Dome Light, Beverage Cup Holders, Map Pockets, Courtesy Lights
- Folding Key w/Keyless Door Lock
- Cabover Bunk Ladder
- 49" X 74" Lifting Cabover Bed, Privacy Curtain & Sliding Side Windows

Living Room

- 19" LCD TV in Cabover or Midship (Dependent on Floor Plan) with Remote
- Home Entertainment System w/2 Speaker Audio System w/DVD, CD, Aux Input, Alarm, USB Input
- Ceiling Halogen Lights w/Wall Switches
- Day/Night Pleated Shades w/Fabric Wrapped Valance and Brushed Aluminum Accents
- Dinette w/2 Cup Holders, Convertible for Sleeping
- Curved Plyform Dinette Base with Brushed Aluminum Toe Kick and Accent Lighting
- Flexsteel® Fabric Jackknife Sofa Bed w/Armrests (Select Models)
- Overhead Accent Feature Lighting

Galley

- 3 Burner Cooktop w/High Output/Piezo Igniter
- Dometic® 6 cu.ft. Refrigerator/Freezer
- Plyform Laminated Wood Doors and Drawers
- Apollo Half Time Convection Oven w/Integrated Range Hood Fan and Light
- Brushed Aluminum Panel Refrigerator Inserts
- 16" Stainless Steel Round Deep Bowl Sink w/High Rise Single Lever Faucet and Sprayer

Bedroom (24D only)

- Bedspread w/Pillow Shams
- Day/Night Pleated Shades w/Fabric Wrapped Valance and Brushed Aluminum Accents
- Decorative Reading Lights
- Curved Bed Base with Storage Compartment
- 52" x 74" Innerspring Mattress

Bathroom

- Bath Door w/Residential Passage Lock (Select Models)
- China Bowl Toilet w/Hand Sprayer
- Medicine Cabinet w/Wood Plyform Construction/Mirror/Soffit w/Halogen Lighting
- Shower Head w/Flexible Hose Extension
- Skylight/Roof Vent w/12V Fan
- Molded ABS Shower/Tub w/Surround (24A), Shower Pan (24D)
- Residential Style Metal Faucet w/Round Stainless Steel Sink
- Curved Shower Rod w/Roller Bearing Shower Rings w/Curtain
- Brushed Nickel Robe Hook and Towel Holder

EXTERIOR

Throughout

- High Gloss Tuff-Coat® Smooth Fiberglass Exterior
- Outstanding Exterior Graphics and Styling
- Pass-Through Storage Compartment
- Large 1" (Inside Diameter) Water Tank Drain
- Rear Ladder
- Utility Compartment w/Holding Tank Dump Valves
- Debris Awning w/All Slide-Out Rooms
- Full-Body Paint
- Full Size Spare Tire
- Trailer Hitch w/7 Pin Electrical Hook-Up†
- Conveniently Located Fuel Fill on Driver Side B-Pillar
- Dual 6V Deep Cycle Auxiliary Batteries

Body Structure

- Vacu-bond® Floor
- Vacu-bond® Hull Lamination Process
- Royal Tuff-Ply Radius Roof w/Ducted A/C
- Corrosion Resistant Aluminum Tube Hull Framing
- Sidewalls Framed w/1 ½" Aluminum Tubing
- Molded Rear Wheel Trim Flares
- Molded Rear Wall/Ceiling Transition Trim
- Molded Fiberglass Wraparound Front End Cap
- ABS Rear Bumper
- 26" Wide Radius Corner Entry Door w/Window
- Extruded Aluminum Running Boards w/Molded Rubber Inserts

Storage

- Galvanized Battery Compartment Container & Lid
- Painted Aluminum Skin Luggage Doors w/Strut Assist, Paddle Latches, Stainless Steel Hinges
- Luggage Compartment Access Under Bed (24D Only)

OPTIONS

INTERIOR

- 15,000 BTU A/C with Heat Pump
- 15" LCD TV w/Remote Control
- Sirius Satellite Radio® (6 Month Subscription Included)
- Villa Jackknife Sofa Bed (Select Models)
- Fabrica® Area Rugs
- Fantastic Roof Vent (Galley Area)
- 6 Gallon 110V/LP DSI Water Heater
- Ultraleather™ Driver/Front Passenger Seat Covers

EXTERIOR

- Carefree Box Awning
- 5.6" Color Rear Vision Camera w/One-Way Audio
- Onan® 3.6kW Microquiet LP Generator
- Exterior Wash Station
- Heated Holding Tanks

FLEETWOOD ADVANTAGES

- DuPont® Full-Body Paint
- Industry Leading Slide-Out Lengths
- Pass-Through Storage
- Corian® Solid Surface Countertops
- Main Ceiling Features Padded Vinyl

WEIGHTS AND MEASUREMENTS

DODGE® SPRINTER CHASSIS

MODELS

	24A	24D
Engine Displacement (Liters)	3.0	3.0
Wheelbase (Inches)	170"	170"
GVWR (lbs) ¹	11,030	11,030
Front GAWR (lbs) ²	4,080	4,080
Rear GAWR (lbs) ²	7,720	7,720
Base Weight (lbs) ³	N/A	N/A
GCWR (lbs) ⁴	14,530	14,530
Hitch Rating Weight (lbs) [†]	3,500	3,500
Tongue Weight (lbs) [†]	350	350
Fuel Capacity (gal)	26.4	26.4

CHASSIS

Model: Dodge® Sprinter
 Engine: Mercedes-Benz® 3.0L CDI 6-Cylinder
 Torque: 280 lb-ft @ 1200-2400 RPM
 Alternator: 180 Amp
 Horsepower: 154HP
 Transmission: 5-Speed Automatic

DIMENSIONS & CAPACITIES

MODELS

	24A	24D
Overall Length ⁵	25' 2"	25' 2"
Overall Height (with A/C)	11' 4"	11' 4"
Overall Width (maximum) ^{6, 7}	91.5"	91.5"
Interior Height (maximum)	80"	80"
Interior Width (maximum)	88"	88"
Fresh Water Holding Tank (gal)	29	29
Grey Water Holding Tank (gal)	33	33
Black Water Holding Tank (gal)	33	33
Appliance Propane Tank (gal) (WC) ⁸	19	19
Water Heater Tank (gal)	6	6



Liquid Weight Reference: Water (gal) = (8.3 lbs/3.8kgs) Fuel (gal) = 7.1 lbs/3.2 kgs) Propane (gal) = (4.2 lbs/1.9 kgs)
 Metric Conversion: Multiply pounds x 0.453 to obtain kilograms. Multiply gallons x 3.785 to obtain liters. Multiply liters x 61 to obtain cubic inches.

- GVWR (Gross Vehicle Weight Rating) is the maximum permissible weight of this fully loaded motor home. The GVWR is equal to or greater than the sum of the (UVW) unloaded vehicle weight plus the (CCC) cargo carrying capacity*.
- GAWR (Gross Axle Weight Rating) is the maximum permissible loaded weight a specific axle is designed to carry.
- Base Weight is the estimated weight of the motor home without fuel, options, water, cargo or passengers.
- GCWR (Gross Combined Weight Rating) is the value specified by the motor home manufacturer as the maximum allowable loaded weight of this motor home with its towed vehicle. Towing and braking capacities may be different. Refer to Fleetwood and chassis manufacturer's manuals for complete information.
- Length measured from front bumper to rear bumper (excludes accessories).
- Excludes safety equipment and awnings.
- Motor homes feature a body-width over 96" which will restrict your access to certain roads. Before purchasing, you should research any state and/or province road laws which may affect your usage.
- Tank manufacturer's listed water capacity (WC). Actual propane capacity is 80% of water listing as required by the safety code.

† The chassis manufacturer recommends the installation of a supplemental brake control system to activate the brakes on the vehicle or trailer you are towing. Hitch receiver ratings expressed are maximum for the hitch receiver installed and may require the purchase of additional equipment that is dependent on the weight of the towed load. Consult with hitch receiver manufacturer for further information.

N/A = not available at time of printing.

*UVW and CCC are found on the cargo carrying capacity label in each RV.

IMPORTANT— PLEASE READ: Product information, photography and illustrations included in this publication were as accurate as possible at the time of printing. For further product information and changes, please visit our website at www.fleetwoodrv.com or contact your local Fleetwood dealer. Prices, materials, design and specifications are subject to change without notice. All weights, fuel, liquid capacities and dimensions are approximate. Fleetwood has designed its recreational vehicles to provide a variety of uses for its customers. Each vehicle features optimal seating, sleeping, storage and fluid capacities. The user is responsible for selecting the proper combination of loads (i.e. occupants, equipment, fluids, cargo, etc.) to ensure that the vehicle's capacities are not exceeded.



CLASS C DIESEL

RV OWNERCARE*

Limited one-year/15,000-mile coach warranty and three-year/50,000-mile structural warranty, whichever occurs first, and it is fully transferable for the first 12 months. RV OWNERCARE is one of the RV industry's most comprehensive programs and includes systems, appliances, components and construction, with no deductible and no service charge. RV OWNERCARE coverage is provided from a company that will be around in the future to service your needs. See your nearest Fleetwood dealer for a full explanation of benefits and restrictions.

CONTACT US

To locate a dealer near you, visit our website at www.fleetwoodrv.com or call 1-800-444-4905. We can also be contacted at Fleetwood Customer Relations, P.O. Box 1007, Decatur, IN 46733.

FLEETWOOD TRAVELCADE CLUB

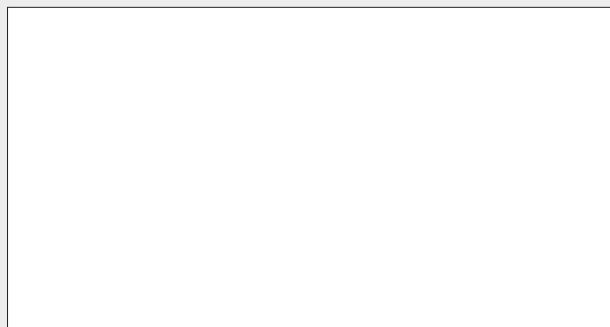
As a Fleetwood owner, you're eligible to become a member of the Fleetwood Travelcade Club. It's a perfect way to meet other Fleetwood owners who love to travel across America and share in the RV lifestyle. Call (877) 577-2560, or visit our website at www.fleetwoodrv.com/owners_clubs to learn more, and join the fun.



treadlightly!
LEAVING A GOOD IMPRESSION



YOUR LOCAL FLEETWOOD DEALER IS:



*For complete info see your Fleetwood dealer.

©2007. Fleetwood Enterprises, Inc.
Printed in the USA. Inventory Control Number IC08B1, 10/07.
Model Year 2008, First Edition.

IMPORTANT—PLEASE READ

Product information, photography and illustrations included in this publication were as accurate as possible at the time of printing. For further product information and changes, please visit our website at www.fleetwoodrv.com or contact your local Fleetwood dealer. Prices, materials, design and specifications are subject to change without notice. All weights, fuel, liquid capacities and dimensions are approximate. Fleetwood has designed its recreational vehicles to provide a variety of uses for customers. Each vehicle features optimal seating, sleeping, storage and fluid capacities. The user is responsible for selecting the proper combination of loads (i.e. occupants, equipment, fluids, cargo, etc.) to ensure that the vehicle's capacities are not exceeded.

WHY FLEETWOOD?



Quality

There's no cutting corners. Skilled craftsmen build every Fleetwood RV for maximum durability and longevity.



Trust

More people trust Fleetwood. After all, we've spent over 50 years perfecting RVs, earning the loyalty of generations of RVers.



Passion

We're truly passionate about the RV lifestyle. Fleetwood was founded by RV enthusiasts, and that tradition continues today.



Safety

You've got precious cargo. So we've engineered dozens of innovative safety features into our motor homes to give you more peace of mind.



Service

Help is nearby. When you need an upgrade or repair, you'll find facilities all across North America and more than 1,100 dealers ready to assist you.



Warranty

Exclusive RV ownercare warranty. See your Fleetwood dealer for details.

 **FLEETWOOD**
Driven to Explore