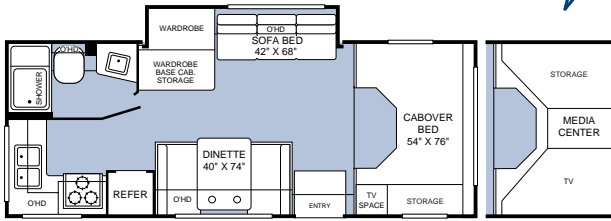




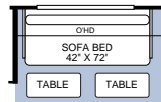
Model 23E



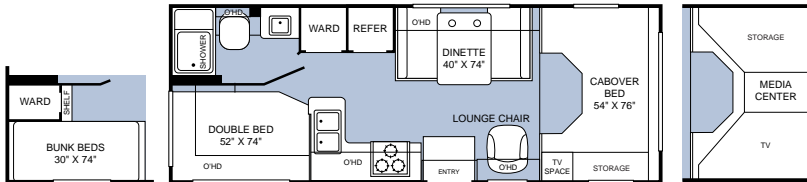
OPT. 086
ENTERTAINMENT CENTER

- Sofa Bed
- Roomy Cabover Bed
- Dinette
- Rear Kitchen
- Large Wardrobe
- Fully Enclosed Bathroom

Model 24D



OPT. 808
SOFA BED W/TABLES

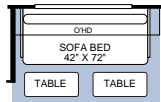


OPT. 861
BUNK BEDS

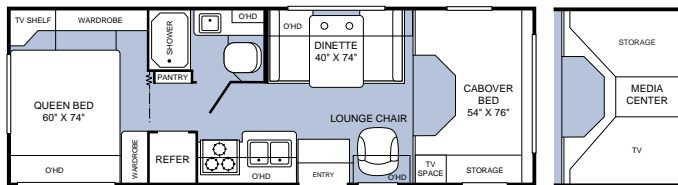
OPT. 086
ENTERTAINMENT CENTER

- Dinette
- Roomy Cabover Bed
- Lounge Chair
- Double Bed or Optional Bunk Beds
- Fully Enclosed Bathroom

Model 26Q



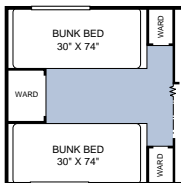
OPT. 808
SOFA BED W/TABLES



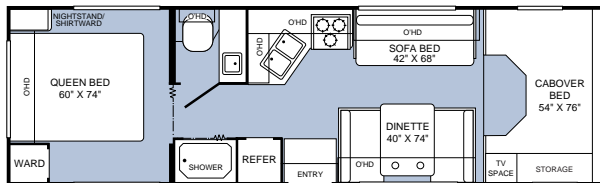
OPT. 086
ENTERTAINMENT CENTER

- Dinette
- Roomy Cabover Bed
- Lounge Chair
- Queen Bed
- Plenty of Wardrobe Storage
- Fully Enclosed Bathroom
- Large Exterior Storage Bay

Model 29V

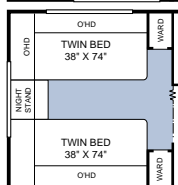


OPT. 863
DOUBLE BUNK BEDS



OPT. 086
ENTERTAINMENT CENTER

- Sofa Bed and Dinette
- Roomy Cabover Bed
- Split Bathroom
- Choice of 3 Bedroom Configurations



OPT. 835
TWIN BEDS W/NIGHTSTAND

Features

- 1 A 5,000 lb. trailer hitch* is available on selected models to bring along your boat, ATVs or other toys.
- 2 Jamboree's high-gloss "Tuff Coat™" fiberglass walls are enhanced with color-coordinated graphics for lasting style.
- 3 Jamboree has a 4 1/4" crowned roof with a one-piece, quality Tuff-Ply™ cover to protect your motor home from the elements.
- 4 Convenient and spacious storage compartments are easy to open and made of non-corrosive polyethylene or galvanized sheet metal liners.
- 5 An optional electric powered entry step provides convenient automatic step extension when the door is opened and retraction when the door is shut.
- 6 Automotive style undercoating protects vital components and chassis from rust and corrosion.
- 7 A drip rail molding on both sides of your Jamboree guides roof water run-off to the front and rear of your coach, away from openings and patio area.
- 8 Optional steel running boards with sturdy formed steel construction, and a protective powder-coated finish, are available for the first step into the cab of your new Jamboree.
- 9 Anti-wicking process, on all of Jamboree's openings and windows, includes multiple seals for prevention of leaks and moisture buildup.
- 10 Velvac® breakaway exterior mirrors are mounted on pivoting arms for safe rotation if impacted. They are also available with optional remote electric adjustment and heated defrost features. (Selected Models)
- 11 The optional skirt paint adds a classic touch to Jamboree's exterior.

Specifications

Ford® Chassis	23E	24D	26Q	29V
Engine Liters	6.8	6.8	6.8	6.8
Wheelbase	158"	158"	176"	198"
GVWR (lbs) (1)	14,050	14,050	14,050	14,050
Front GAWR (lbs) (2)	4,600	4,600	4,600	4,600
Rear GAWR (lbs) (2)	9,450	9,450	9,450	9,450
Base Weight (lbs) (3)	9,899	9,186	9,840	10,140
GCWR (lbs) (4)	19,050	19,050	19,050	19,050
Hitch Rating Weight (lbs)*	5,000	5,000	5,000	5,000
Tongue Weight (lbs)*	500	500	500	500
Fuel Capacity (gal)	55	55	55	55

Dimensions and Capacities

Overall Length (5)	23' 11"	24' 11"	26' 11"	29' 11"
Overall Height (with A/C)-only if standard	10' 9"	10' 9"	10' 9"	10' 9"
Overall Width (maximum) (6)	102"	102"	102"	102"
Interior Height (maximum)	79"	79"	79"	79"
Interior Width (maximum)	96"	96"	96"	96"
Fresh Water Holding Tank (gal)	35	30	30	30
Grey Water Holding Tank (gal)	36	36	34	37
Black Water Holding Tank (gal)	35	35	36	37
Appliance LPG Tank (gal) (WC) (7)	14	14	14	14
Water Heater Tank (gal)	6	6	6	6

Liquid Weight Reference Water (gal) = (8.3 lbs/3.8 kgs) Fuel (gal) = (6.1 lbs/2.8 kgs) LPG (gal) = (4.2 lbs/1.9 kgs)

Metric Conversion

Multiply pounds x 0.453 to obtain kilograms

Multiply gallons x 3.785 to obtain liters

1. GVWR (Gross Vehicle Weight Rating): Means the maximum permissible loaded weight of the motor home. The GVWR is equal to or greater than the sum of the unloaded vehicle weight plus the net carrying capacity.
 2. GAWR (Gross Axle Weight Rating): Means the maximum permissible loaded weight a specific axle is designed to carry.
 3. Base Weight: Means the estimated weight of the motor home without fuel, options, water, cargo or passengers.
 4. GCWR (Gross Combined Weight Rating): Means the value specified by the motor home manufacturer as the maximum allowable loaded weight of this motor home with its towed vehicle. Towing and braking capacities may differ. Refer to Fleetwood and chassis manufacturer manuals for complete information.
 5. Length taken from front bumper to rear bumper (excludes accessories).
 6. Excludes safety equipment and awnings.
 7. Tank Manufacturer's listed water capacity (WC). Actual LPG capacity is 80% of water listing as required by the safety code.
N/A: Information not available at the time of publication.
- * The chassis manufacturer recommends the installation of a supplemental brake control system to activate the brakes on the vehicle or trailer you are towing.

IMPORTANT—PLEASE READ: Product information, photography and illustrations included in this publication were as accurate as possible at the time of printing. For further product information and changes, please visit our website at www.fleetwoodrv.com or contact your local Fleetwood dealer. Prices, materials, design and specifications are subject to change without notice. All weights, fuel, liquid capacities and dimensions are approximate. Fleetwood has designed its recreational vehicles to provide a variety of uses for its customers. Each vehicle features optimal seating, sleeping, storage and fluid capacities. The user is responsible for selecting the proper combination of loads (i.e. occupants, equipment, fluids, cargo, etc.) to ensure that the vehicle's capacities are not exceeded.

Standards

Exterior Automotive

Chassis—Ford® E450, 6.8L Triton™ V10 w/305 hp, Dual Airbags, 4W Anti-Lock Brakes, Automatic 4-Speed Transmission w/Overdrive

Trailer Hitch - Class III (5,000 lbs. Rating)

7-Pin Hitch Plug

Stainless Steel Wheel Liners

Interior Automotive

Power Windows & Door Locks

Flexsteel® Adjustable/Reclining Bucket Seats w/Armrest (Ford)

Chassis Supplied—Heating & Air Conditioning, Cigarette Lighter/12V Power Supply, Intermittent Windshield Wipers, Power Steering w/Tilt Wheel, Cruise Control, Sunvisors (2), Dome Light, Beverage Cup-Holders, Map Pocket

Privacy Curtain Panel

Exterior

High-Gloss Tuff Coat™ Smooth Fiberglass Exterior

1-Pc. Crowned Roof w/Tuff-Ply™ Covering

Corrosion Resistant Aluminum Tube Hull Framing

Vacu-bond® Hull Lamination Process

Undercoating—Automotive Quality Undercarriage Protection

Aluminum Running Boards

Molded Rear Wheel Trim Flares

Molded Rear Wall/Ceiling Transition Trim

Rear Ladder

Breakaway Side Mirrors

AC Duplex GFI Receptacle on Patio Side

Windows—Radius Tinted

Large Storage Bay—Multi-Door Compartment Access w/Smaller Storage Wells for Convenient Cargo Organization, Strut Assisted Doors (26Q Only)

Entry Door w/Screen Door & Deadbolt Lock

Porch Light w/Interior Switch

Interior

54" X 76" Cabover Bed w/Patented Slider Bunk Operation, Privacy Curtain, Roof Vent & Sliding Side Windows

Cabover Bunk Ladder

Ceiling Lights w/Wall Switches at Entry & Lavy

Day/Night Pleated Shades—Living Area

Night Pleated Shades—Bedroom (N/A on 23E)

Cup-holders (2) in Dinette

Large Viewing Window in Dinette

Residential Style Clock

Carpet w/Pad & Vinyl Flooring in Galley & Lavy

Telephone/Modem Jack w/Exterior Jack Input

Cabinetry

Raised Panel Doors w/Hardwood Frames

Brentwood Cherry Woodgrain

Drawer Boxes—Real Wood Construction

Galley

Sink—Residential Size Double Bowl

Faucet—Single Lever Control

Rangehood w/Light & Fan

3-Burner Range w/High-Output/Piezo Ignitor & Oven

Microwave Oven—1.0 cu. ft. w/Touch Panel

Refrigerator/Freezer—Dometic® 6 cu. ft.

Flip-Top Extension (N/A on 23E)

Kitchen Convenience Package—Spice Rack, Knife Holder, Paper Towel Holder, Sink Cover/Cutting Board, Silverware Drawer

Decorative Wall Border

Bath

Shower Surround/Pan—Molded ABS (26Q and 29V Only)

Shower/Tub Surround/Pan—Molded ABS (23E and 24D Only)

Shower Head w/Flexible Hose Extension

Rectangular Sink w/Dual Control Faucet

Medicine Cabinet—Wood Construction

Mirror—Wall Mounted

Towel Bar

Skylight/Roof Vent w/12V Fan

Toilet—Marine Style w/Tissue Roll Holder

Bath Door—White Colonial Panel w/Residential Passage Lock

Bedroom

Bedsread w/Pillow Shams (N/A on 23E)

Mattress—Innerspring (N/A on 23E)

Double Bed (24D Only)

Queen Bed (26Q and 29V Only)

TV Shelf w/12V & Cable Jacks, AC Receptacle (26Q and 29V Only)

Reading Lights—Adjustable (N/A 23E)

Furnishings

Furniture—Quality Construction by Flexsteel®

Sofa—Jackknife w/Armrests & Snack Tray/Convertible for Sleeping (23E and 29V Only)

Dinette—Convertible for Sleeping

Lounge Chair—Swivel Base w/Forward Facing Lock Position (24 and 26Q Only)

Entertainment

Video Ready Package—Retractable TV Antenna, Amplified Antenna Booster, Interior Jacks w/12V & Coax Cable Ports, Coax Cable, Exterior Park Cable Input Jack

Radio (Cab)—AM/FM/Cassette

4 Speakers—(2) in Cab Doors, (2) Ceiling Mounted

Coach Support Systems

Monitor Panel—Auxiliary & Chassis Battery Condition Check, Holding Tank Levels, Fresh Water Tank Level, LP Gas Tank Level, All Level Readings in 1/4 Increments, DSI Water Heater Switch w/Lighted Indicator, Water Pump Switch w/On Indicator Light, Battery Disconnect Switch, Generator Start/Stop Switch & Hour Meter (w/Generator Option)

Auxiliary Battery—12V

Auxiliary Batteries—Dual 6V Deep Cycle (23E Only)

Battery Compartment—Molded Cross-Link Polyethylene Container & Lid Easy Access for Battery Maintenance & Electrical Components Check

Auxiliary Start Circuit—Emergency Start Assist Switch on Dash

Battery Disconnect—Auxiliary Battery(ies), Switch on Monitor Panel

AC/DC Load Center w/12V Converter/Battery Charger

Shore-Line Power Cord—30-Amp, 30' Long, Compartment Storage

Roof Vent—Bedroom (N/A 23E)

Furnace—25,000 BTU, Auto-Ignition, Ducted, Wall Mtd. Thermostat (23E and 24D Only)

Furnace—30,000 BTU, Auto-Ignition, Ducted, Wall Mtd. Thermostat (26Q and 29V)

Fresh Water Plumbing—Cross-Linked Polyethylene Tubing

Water Heater—6 Gallon, Electronic Ignition, LP Gas

Water Heater Bypass Valve—Fresh Water System Winterization

Water Pump—12V, Demand Operation

Water Pump Controller—On/Off Switches at Galley, Lavy & Optional Exterior Wash Unit

Water Tank Drain

City Water Hook-Up

Sewer Hose Compartment—Located Near Holding Tank Dump Valves

Safety

3-Point Seat Belts—Driver and Passenger Front Seats

Driver/Passenger Airbag Supplemental Restraint System

Lap Belts—At Selected Living Area Seating Positions

Smoke/Detector/Alarm

Carbon Monoxide Detector/Alarm

Fire Extinguisher—10 BC

GFI Circuit Protection—Galley, Lavy, Patio Receptacles

Entry Assist Handle

Slide-Out

Living Room—Wardrobe/Sofa w/Debris Awning (23E Only)

Options

Exterior Automotive

Spare Tire

Interior Automotive

Rearview Camera/Monitor System (29V Only)

Custom Dash Appliques

Radio (Cab)—AM/FM/CD

Exterior

Steel Running Boards

Painted Skirts

Power/Heated Side Mirrors

Awning—Patio Cover (USA Only)

Electric Power Entry Step

Wash Unit—Dual Control Faucet, Shower Hose w/Flexible Hose, Water Pump On/Off Switch

Bicycle Rack—Trailer Hitch Receiver Mount

Galley

Water Filtration System

Bedroom

Twin Beds (29V Only)

Bunk Beds w/Cushions (24D Only)

Double Bunk Beds w/Cushions (29V Only)

Entertainment

Satellite Dish—Digital Elevation Sensor w/Manual Lift 13" Color TV and VCR

Entertainment System—27" Panasonic TV, Panasonic Hi-Fi VCR, Media Storage Center

Exterior Entertainment Center—w/AM/FM/CD Player and Auxiliary Speaker, Coax Cable and 12V/110 Receptacles

Coach Support Systems

Air Conditioner—13,500 BTU/Ducted (23E, 24D and 26Q Models Only)

Air Conditioner—15,000 BTU/Ducted (29V Only)

Dual Auxiliary Batteries—Dual 6V (24D, 26Q and 29V Models Only)

For every road you travel, Fleetwood has the RV to fit your high standards and lifestyle. We build the recreational vehicles America wants, accounting for nearly one out of every three RVs on the road today. How do we do it? We call it the **Fleetwood Equation**.

Size + Service + Quality = Value!

Size The world's #1 RV manufacturer

Over the past half-century Fleetwood has grown to become the largest manufacturer of recreational vehicles in the world. Fleetwood remains, year after year, the largest, most influential, innovative and recognized leader in the RV industry.

Service Listening to our customers

With over 1,100 service dealers in the US and Canada, Fleetwood has the largest network in the RV industry. No other RV company comes close to equaling this vital customer support system. Fleetwood RV service dealers have instant, real-time electronic access to your service records as well as parts inventory and warranty repair authorization inquiries. We also provide a customer call center for service and product information so no matter where you travel in North America, professional support and fast answers are always nearby. Call toll free: 1-800-322-8216.



Quality Using only the best materials

At Fleetwood, quality begins at the design stage so every coach is built right, right from the start. Subsequent to design approval, full-functioning prototypes are built, then punished on a test track and subjected to accelerated life cycle tests where a few weeks can equal years of normal use. At the same time, components and systems are test-cycled thousands of times assuring years of problem-free use. Once approved for production, each unit is built by skilled technicians using quality materials and components, many of which are sourced through, or manufactured by, our subsidiary companies such as Gold Shield Fiberglass and Continental Lumber Products.



Fleetwood engineers specify the very best products and appliances from companies such as Coleman®, Dometic®, Flexsteel®, Ford®, Freightliner®, Magic Chef®, Panasonic®, and Workhorse®. These companies are experts in their respective fields and play a significant role as partners, not just suppliers.

All this assures that every Fleetwood RV has the fit, finish and details required by our high standards—as well as yours.

Value Priced right with style

At Fleetwood RV, we look at value as the sum of everything we offer.

- Value is our design, engineering expertise, and innovative manufacturing methods.
- Value is structures and components that are the best in the industry, that meet or exceed government and industry safety standards.
- Value is Ownercare—a one-year/three-year warranty with coverage from a company that will be around in the future to service your needs. Ownercare is one of the RV industry's most comprehensive programs and includes systems and applications, construction, no deductible and no service charge. And it is fully transferable for the first 12 months. See your nearest Fleetwood dealer for a full explanation of benefits and restrictions.
- Value is customer satisfaction. When asked, more experienced RV owners would recommend Fleetwood to a friend than any other brand. Fleetwood RVs consistently hold their value better than most RVs at trade-in time.



Value is peace of mind.

SSQV—Size, Service, Quality, and Value. Together they equate to the very best RV you can buy, and the reason you should purchase a Fleetwood over any other brand.

Require these features when you purchase your next RV... Fleetwood does!

See you on the road!



Join Now!
(877) 577-2560

FLEETWOOD RV™

America's #1 RV Manufacturer! Your local Fleetwood RV dealer is:



www.fleetwoodrv.com

Visit our website to find a dealer near you or learn more about other Fleetwood products. Or call 1-800-444-4905.

FOR CUSTOMER ASSISTANCE, call toll free 1-800-322-8216, visit our website, or you may write to Fleetwood Enterprises, Inc., P.O. Box 7638, Riverside, CA 92513-7638.

IMPORTANT—PLEASE READ: Product information, photography and illustrations included in this publication were as accurate as possible at the time of printing. For further product information and changes, please visit our website at www.fleetwoodrv.com or contact your local Fleetwood dealer. Prices, materials, design and specifications are subject to change without notice. All weights, fuel, liquid capacities and dimensions are approximate. Fleetwood has designed its recreational vehicles to provide a variety of uses for its customers. Each vehicle features optimal seating, sleeping, storage and fluid capacities. The user is responsible for selecting the proper combination of loads (i.e. occupants, equipment, fluids, cargo, etc.) to ensure that the vehicle's capacities are not exceeded.