



Jamboree[®] GT



2004

Explore Jamboree GT's Features and Benefits.

Loaded with Standard Features — Jamboree GT is equipped the way you would order it, truly, it has only three (3) Options. Relaxing is so much easier when you take the work out of it.

Deluxe Interiors Designed like our Class A Coaches — Stylish comfort and practical function provides looks that perform.

One Piece molded Fiberglass Front-End Cap — Beautiful aerodynamic maintenance free appearance. A very "HIGH-END" look.

Laminated Aluminum Basement Truss System — Lighter and stronger than conventional Class C trusses, insulated for reduced temperature/noise transfer.

Powder Coated Painted Steel Running Boards — Much more durable and "foot friendly" than fiberglass, aluminum or galvanized metal alternatives.

EZ STORE™ Slide-Out Storage — Easy and accessible exterior storage without having to "stoop" to get to your belongings.

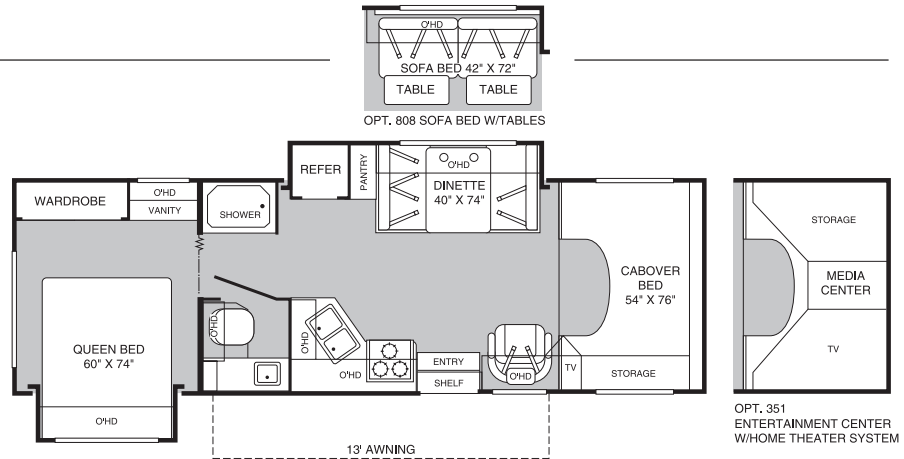
External Access to Dinette Storage — Convenient storage option when packing for a trip.

Painted Aluminum Luggage Doors — High-End appearance, sleek automotive styling, single handle for easy access and insulated.

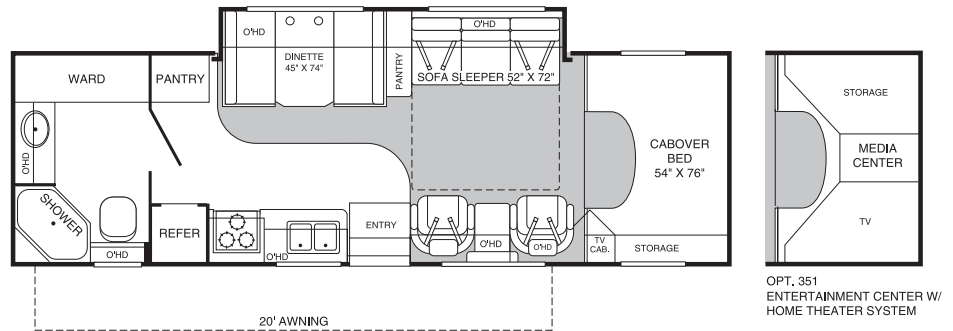
Rear Fuel Fill — Ease of operation when fueling... no more "what side is it on?"

By Fleetwood — a name you know, a name you trust.

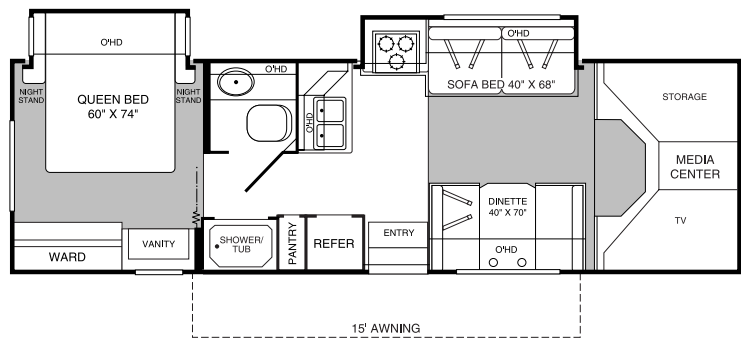
Model 28R



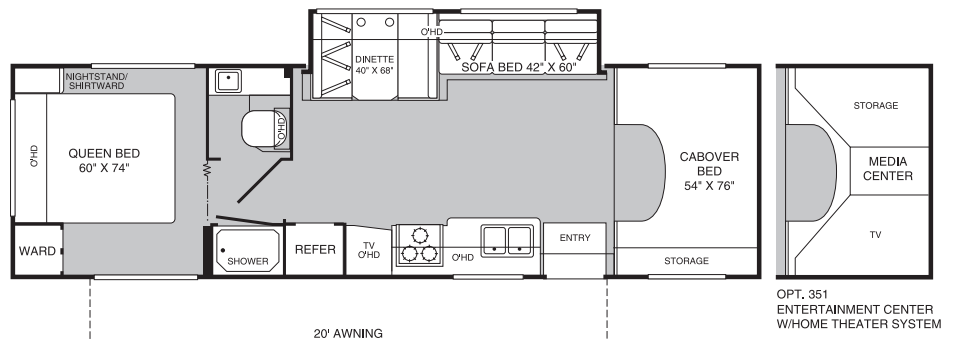
Model 29S



Model 30U



Model 31W



Top Features

- Vacu-Bond® Walls with Smooth High-Gloss Tuff Coat™ Fiberglass
- Molded Fiberglass Front Cap
- Corrosion Resistant Aluminum Tube Hull Framing
- Crowned Roof with Tuff-Ply™ Covering
- Insulated Aluminum Doors with Strut-Assist Action
- Deluxe Exterior Graphics with Painted Skirts
- "Breakaway" Exterior Mirrors with Remote Adjustment and Heat Defrost

- Custom Steel Running Boards
- Alcoa Classic Aluminum Wheels
- Centralized Roto-Cast Utility Compartment
- EZ Store™ Slide-Out Storage Compartment (28R, 29S and 31W only)
- 4.0 KW Onan® Microquiet Generator
- 15,000 BTU AC with In-Ceiling Ducting
- Dometic® Sunchaser Awning
- Auto-Touch Convection Microwave Oven
- Flexsteel® Furniture
- Dometic® 8 Cu. Ft. Double Door Refrigerator

- In-Dash Panasonic® Stereo AM/FM/CD Player
- Satellite Dish with Digital Elevation Sensor
- Flexsteel® Ultraleather™ Bucket Seats

Options

- Entertainment Center with Panasonic® 27" TV and Home Theater Sound System (Standard on 30U)
- Rearview Camera and Monitor
- Exterior Entertainment Center with CD Player and Integrated TV Shelf

Ford® Chassis	28R	29S	30U	31W
Wheelbase	198"	198"	206"	214"
GVWR (lbs) (1)	14,050	14,050	14,050	14,050
Front GAWR (lbs) (2)	4,600	4,600	4,600	4,600
Rear GAWR (lbs) (2)	9,450	9,450	9,450	9,450
Base Weight (lbs) (3)	11,900	11,826	12,250	12,000
GCWR (lbs) (4)	17,550	17,550	17,550	17,550
Hitch Rating Weight (lbs)*	3,500	3,500	3,500	3,500
Tongue Weight (lbs)*	350	350	350	350
Fuel Capacity (gal)	55	55	55	55

Dimensions and Capacities

Overall Length (5)	29' 1"	30' 1"	30' 6"	31' 4"
Overall Height (with A/C)	11' 4"	11' 4"	11' 4"	11' 4"
Overall Width (maximum) (6)	102"	102"	102"	102"
Interior Height (maximum)	79"	79"	79"	79"
Interior Width (maximum)	96"	96"	96"	96"
Fresh Water Holding Tank (gal)	30	30	30	35
Grey Water Holding Tank (gal)	35	37	35	35
Black Water Holding Tank (gal)	42	49	35	35
Appliance LPG Tank (gal) (WC) (7)	14	14	14	14
Water Heater Tank (gal)	6	6	6	6

Liquid Weight Reference: Water (gal) = (8.3 lbs/3.8 kgs) Fuel (gal) = (6.1 lbs/2.8 kgs) LPG (gal) = (4.2 lbs/1.9 kgs)

Metric Conversion: Multiply pounds x 0.453 to obtain kilograms Multiply gallons x 3.785 to obtain liters

1. GVWR (Gross Vehicle Weight Rating): Means the maximum permissible loaded weight of the motor home. The GVWR is equal to or greater than the sum of the unloaded vehicle weight plus the net carrying capacity.
2. GAWR (Gross Axle Weight Rating): Means the maximum permissible loaded weight a specific axle is designed to carry.
3. Base Weight: Means the estimated weight of the motor home without fuel, options, water, cargo or passengers.
4. GCWR (Gross Combined Weight Rating): Means the value specified by the motor home manufacturer as the maximum allowable loaded weight of this motor

home with its towed vehicle. Towing and braking capacities may differ. Refer to Fleetwood and chassis manufacturer manuals for complete information.

5. Length taken from front bumper to rear bumper (excludes accessories).
 6. Excludes safety equipment and awnings.
 7. Tank Manufacturer's listed water capacity (WC). Actual LPG capacity is 80% of water listing as required by the safety code.
- * The chassis manufacturer recommends the installation of a supplemental brake control system to activate the brakes on the vehicle or trailer you are towing.

IMPORTANT — PLEASE READ: Product information, photography and illustrations included in this publication were as accurate as possible at the time of printing. For further product information and changes, please visit our website at www.fleetwoodrv.com or contact your local Fleetwood dealer. Prices, materials, design and specifications are subject to change without notice. All weights, fuel, liquid capacities and dimensions are approximate. Fleetwood has designed its recreational vehicles to provide a variety of uses for its customers. Each vehicle features optimal seating, sleeping, storage and fluid capacities. The user is responsible for selecting the proper combination of loads (i.e. occupants, equipment, fluids, cargo, etc.) to ensure that the vehicle's capacities are not exceeded.

Jamboree GT

RV OWNERCARE...

is a limited one-year/three-year or 15,000 mile warranty, whichever occurs first, and it is fully transferable for the first 12 months.

RV OWNERCARE is one of the RV industry's most comprehensive programs and includes systems, appliances, components, and construction, with no deductible and no service charge.

RV OWNERCARE coverage is provided from a company that will be around in the future to service your needs. See your nearest Fleetwood dealer for a full explanation of benefits and restrictions.

Club Fleetwood...

As a Fleetwood owner, you're eligible to become a member of our owners group, Club Fleetwood. It's a perfect way to meet other Fleetwood owners who love to travel to beautiful resorts and vacation spots all across America. Call (877) 577-2560 and join the fun!



What Drives You?

Maybe it's feeling like you're the only one on Earth. Perhaps it's the unique sense of closeness with the great outdoors. Or, it might be the joy that comes from spending quality time with family and friends.

Whatever the reason, we know that you have a strong drive to experience everything that comes with spending time on the road. And for more than 50 years, we've shared that passion with you.

Because we're RV enthusiasts ourselves, you can see our passion in the vehicles we design and build. Own a Fleetwood, and you'll feel like you're not just traveling, but embarking on an experience unlike any other.

Set your own course for adventure and get out there and explore the world around you. Once you do, you'll see what it is that drives us — it's you.



Your local Fleetwood dealer is:

www.fleetwoodrv.com Visit our website to find a dealer near you or learn more about other Fleetwood products. Or call 1-800-444-4905.



IMPORTANT—PLEASE READ: Product information, photography and illustrations included in this publication were as accurate as possible at the time of printing. For further product information and changes, please visit our website at www.fleetwoodrv.com or contact your local Fleetwood dealer. Prices, materials, design and specifications are subject to change without notice. All weights, fuel, liquid capacities and dimensions are approximate. Fleetwood has designed its recreational vehicles to provide a variety of uses for its customers. Each vehicle features optimal seating, sleeping, storage and fluid capacities. The user is responsible for selecting the proper combination of loads (i.e. occupants, equipment, fluids, cargo, etc.) to ensure that the vehicle's capacities are not exceeded.