

Jamboree GT

Class C



Independence Blue

Full-Body Paint Graphics



Shalestone



Platinum



Iron



Sunfire



Driven to Explore

INTERIOR DECORS

Spa

LIVING/DINING ROOM



Dinette Cushions



Sofa



Ultraleather™ Driver & Front Passenger Seats, Sofa (Optional)

BEDROOM



Bedspread & Headboard



Accent Fabric



Throw Pillow

Blue Topaz

LIVING/DINING ROOM



Dinette Cushions



Sofa



Ultraleather™ Driver & Front Passenger Seats, Sofa (Optional)

BEDROOM



Bedspread & Headboard



Accent Fabric



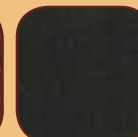
Throw Pillow

Ebony

LIVING/DINING ROOM



Dinette Cushions



Sofa



Ultraleather™ Driver & Front Passenger Seats, Sofa (Optional)

BEDROOM



Bedspread & Headboard



Accent Fabric



Throw Pillow

Wood Finishes



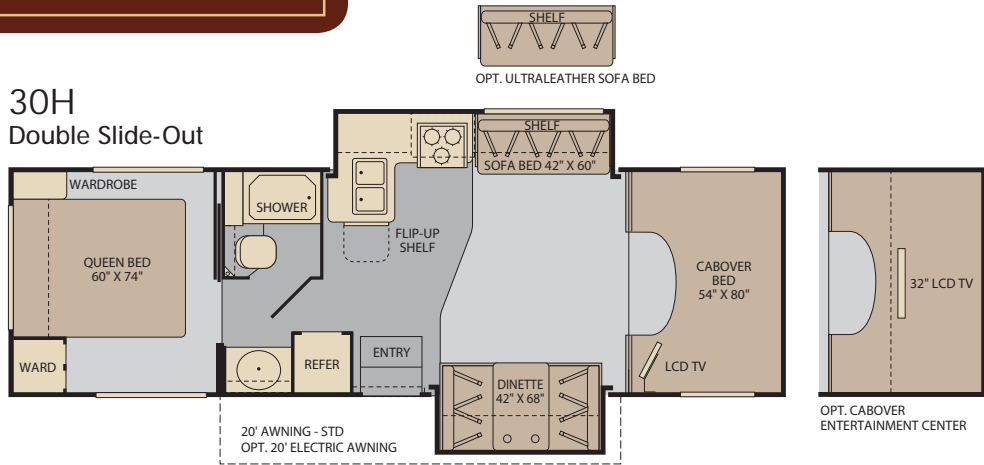
Bijou Cherry



Plantation Cherry

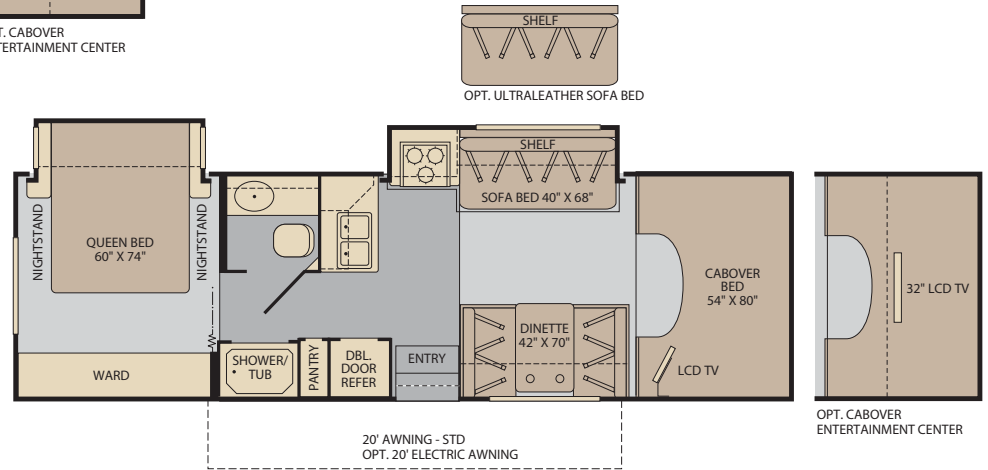
FLOOR PLANS

30H Double Slide-Out



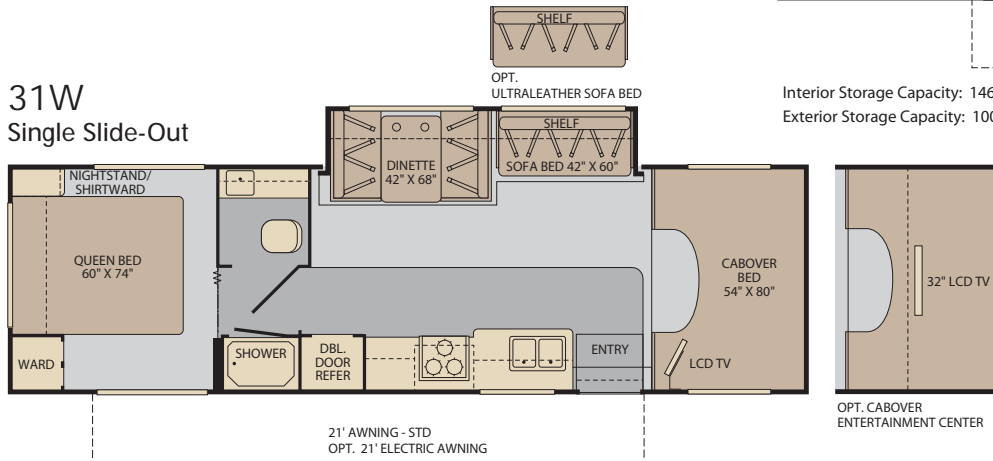
Interior Storage Capacity: 75 cu. ft.
Exterior Storage Capacity: 114 cu. ft.

30U Double Slide-Out



Interior Storage Capacity: 146 cu. ft.
Exterior Storage Capacity: 100 cu. ft.

31W Single Slide-Out



Interior Storage Capacity: 113 cu. ft.
Exterior Storage Capacity: 105 cu. ft.

STANDARD FEATURES

INTERIOR

INTERIOR THROUGHOUT

- Complete TuffPEX Plumbing System
- 12V Water Pump, Demand Operation
- 15,000 BTU Ducted Air Conditioner w/Chill Grille
- 30,000 BTU Furnace, Wall Mounted Thermostat
- 6 Gallon Propane Water Heater w/Electronic Ignition
- Arch Hardwood Overhead Cabinet Doors w/ Raised Panel & Hidden Hinges
- Auxiliary Battery w/Disconnect Switch
- Carpet w/Pad & Vinyl Flooring in Galley, Lavy & Entry
- Deluxe Roller Bearing, Full Extension Drawer Guides & Transit-Ship Locks
- Water Pump Controller w/On/Off Switches at Galley, Lavy & Service Compartment
- Quality Constructed Furniture by Flexsteel®
- Water Heater Bypass Valve Fresh Water System Winterization
- Central Monitor Panel
- GFI Circuit Protection
- AC/DC Load Center w/12V Converter/Battery Charger

DRIVER CONVENIENCE

- 3 Point Seat Belts at Driver & Front Passenger Seats
- Auxiliary Emergency Start Assist Switch on Dash
- In-Dash AM/FM/Radio w/CD Player & 4 Speakers
- Power Windows & Door Locks
- 54" X 80" Cabover Bed w/Privacy Curtain, Roof Vent & Sliding Side Windows
- Cabover Bunk Ladder
- Driver/Front Passenger Airbag Supplemental Restraint System
- Custom Dash Appliqués
- Cockpit Area w/Tilt Wheel, Cruise Control, Dome Light, Beverage Cup Holders, Map Pocket
- Rear Vision Camera

LIVING ROOM

- 19" LCD TV in Cabover with Remote
- Ceiling Lights w/Wall Switches (Entry & Bath)
- Day/Night Pleated Shades
- Dinette w/2 Cup Holders, Convertible for Sleeping
- Sofa Bed w/Armrests

GALLEY

- Corian® Countertops
- 3 Burner Range w/High Output/Piezo Ignitor & Oven
- Decor Wall Border
- Dometic® 8 cu. ft. Refrigerator/Freezer
- Real Wood Drawers
- Flip-Up Countertop Extension (Select Models)
- Kitchen Convenience Package: Spice Rack, Paper Towel Holder, Sink Cover/Cutting Board, and Silverware Drawer
- Convection Microwave Oven w/ Light and Fan
- Stainless Steel Refrigerator Inserts
- Stainless Steel Appliances
- Residential Size Double Bowl Sink w/Single Lever Faucet
- Whole Coach Water Filtration System
- Stainless Steel Cook Top Cover
- Soap Dispenser
- Power Roof Fan-Tastic® Vent Fan

BEDROOM

- Bedspread w/Pillow Shams
- Night Pleated Shades
- Decorative Reading Lights
- Queen Bed w/Innerspring Mattress

BATHROOM

- Corian® Countertops
- Bath Door w/Residential Passage Lock and Towel Bars
- China Bowl Toilet w/Hand Sprayer
- Medicine Cabinet w/Wood Construction
- Shower Head w/Flexible Hose Extension
- Skylight/Roof Vent w/12V Fan
- Wall Mounted Mirror
- Molded ABS Shower/Tub w/Surround
- Residential Style Metal Faucet w/Large Sink
- Glass Shower Door Enclosure

SAFETY/CONVENIENCE

- 10 ABC Fire Extinguisher
- Carbon Monoxide Detector/Alarm
- Exterior & Interior Entry Assist Handle
- Propane Detector/Alarm
- Smoke Detector/Alarm
- Multiple Seatbelt Locations

EXTERIOR

EXTERIOR THROUGHOUT

- High Gloss Tuff-Coat® Smooth Fiberglass Exterior
- Full Body Paint Exterior Graphics and Styling
- Onan® 4.0kW Microquiet Generator
- Large 1" (Inside Diameter) Water Tank Drain
- Rear Ladder
- Utility Compartment w/Exterior Shower & Holding Tank Dump Valves
- Aluminum Basement Truss System
- EZ Glide® Slide-Out Room and Compartment (Select Models)
- Debris Awning Above All Slide-Out Rooms
- Patio Awning
- Full Size Spare Tire
- Trailer Hitch w/7 Pin Electrical Hook-Up'
- Rear Fuel Fill
- Alcoa® Aluminum Wheels
- Dual 6V Deep Cycle Auxiliary Batteries
- Toilet Tank San-T-Flush™ System

BODY STRUCTURE

- Vacu-bond® Floor
- Vacu-bond® Hull Lamination Process
- Royal Tuff-Ply Radius Roof w/Ducted A/C
- Sidewalls Framed with 1½" Aluminum Tubing
- Corrosion Resistant Aluminum Tube Hull Framing
- Molded Rear Wheel Trim Flares
- Molded Rear Wall/Ceiling Transition Trim
- Steel Powder Coated Rear Bumper
- One-Piece Molded Fiberglass Front End Cap
- 26" Wide Radius Corner Entry Door w/ Window
- Powder Coated Steel Running Boards w/ Custom Molded Front Wheel Trims
- Heated Holding Tanks in Basement Compartments
- Full Basement Exterior

STORAGE

- Molded Cross Link Polyethylene Battery Compartment Container & Lid
- Painted Aluminum Skin Luggage Doors w/ Strut Assist, Single Padded Latches, Stainless Steel Hinges

SAFETY/CONVENIENCE

- 30 Amp, 30' Power Cord, Compartment Storage
- AC Duplex GFI Receptacle on Patio Side
- Amber Porch Light w/Interior Switch
- Automotive Safety Glass
- Breakaway Side Mirrors w/Power Adjust & Heat Control
- Entry Door w/Screen Door & Deadbolt Lock
- High Mounted Large Taillights
- Hydraulic 4 Wheel Disk Brakes w/4 Wheel Anti-Lock Brakes
- Power Electric Step
- Radius Tinted Windows

OPTIONS

INTERIOR

- 15,000 BTU A/C with Heat Pump
- Cabover Entertainment System: 32" LCD TV w/Home Theater
- Satellite Radio
- Ultraleather™ Sofa Bed
- Bedroom Roof Vent
- 15" LCD TV (Bedroom)

EXTERIOR

- Exterior Entertainment Center w/AM/FM/CD Player and Auxiliary Speaker, Coax Cable & 12V/110 Receptacles
- Electric Patio Awning
- Auto Locating Satellite Dish

FLEETWOOD ADVANTAGES

- 5 Full-Body Paint Options
- One-Piece Molded Fiberglass Front End Cap
- 3 Interior Decors and 2 Wood Choices Provide 6 Different Interior Looks Tailored to Your Preferences
- 3 Floor Plans from 30' to 31' with Single or Double Slide-Outs to Suit Your RV Lifestyle
- Vacu-bond® Walls with Smooth High Gloss Exterior Tuff-Coat® Fiberglass
- Extended Season Camping with Enclosed/ Heated Water & Holding Tanks

WEIGHTS

MODELS	30H	30U	31W
Engine Displacement (Liters)	6.8	6.8	6.8
Wheelbase (Inches)	206"	206"	214"
GVWR (lbs) ¹	14,500	14,500	14,500
Front GAWR (lbs) ²	5,000	5,000	5,000
Rear GAWR (lbs) ²	9,500	9,500	9,500
GCWR (lbs) ³	19,500	19,500	19,500
Hitch Rating Weight (lbs) ¹	5,000	5,000	5,000
Tongue Weight (lbs) ¹	350	350	350
Fuel Capacity (gal)	55	55	55

DIMENSIONS AND CAPACITIES

MODELS	30H	30U	31W
Overall Length ⁴	30' 10½"	30' 10½"	31' 8½"
Overall Height (with A/C)	11' 7"	11' 7"	11' 7"
Overall Width (maximum) ^{5,6}	102"	102"	102"
Interior Height (maximum)	82"	82"	82"
Interior Width (maximum)	96"	96"	96"
Fresh Water Holding Tank (gal)	50	50	50
Grey Water Holding Tank (gal)	35	35	35
Black Water Holding Tank (gal)	35	35	35
Water Heater Tank (gal)	6	6	6
Appliance Propane Tank (gal) (WC) ⁷	14	14	14

Liquid Weight Reference: Water (gal) = (8.3 lbs/3.8kgs) Fuel (gal) = 6.1 lbs/2.8 kgs) Propane (gal) = (4.2 lbs/1.9 kgs)

Metric Conversion: Multiply pounds x 0.453 to obtain kilograms. Multiply gallons x 3.785 to obtain liters. Multiply liters x 61 to obtain cubic inches.

CHASSIS

Model: Ford® E450	Alternator: 115 Amp
Engine: 6.8L Triton V10	Horsepower: 305HP
Torque: 420 lb-ft @ 3250 RPM	Transmission: 5-Speed Automatic w/Overdrive

- GVWR (Gross Vehicle Weight Rating) is the maximum permissible weight of this fully loaded motor home. The GVWR is equal to or greater than the sum of the (UVW) unloaded vehicle weight plus the (CCC) cargo carrying capacity*.
- GAWR (Gross Axle Weight Rating) is the maximum permissible loaded weight a specific axle is designed to carry.
- GCWR (Gross Combined Weight Rating) is the value specified by the motor home manufacturer as the maximum allowable loaded weight of this motor home with its towed vehicle. Towing and braking capacities may be different. Refer to Fleetwood and chassis manufacturer's manuals for complete information.
- Length taken from front bumper to rear bumper (excludes accessories).
- Excludes safety equipment and awnings.
- Motor homes feature a body-width over 96 which will restrict your access to certain roads. Before purchasing, you should research any state and/or province road laws which may affect your usage.
- Tank manufacturer's listed water capacity (WC). Actual propane capacity is 80% of water listing as required by the safety code.

† The chassis manufacturer recommends the installation of a supplemental brake control system to activate the brakes on the vehicle or trailer you are towing. Hitch receiver ratings expressed are maximum for the hitch receiver installed and may require the purchase of additional equipment that is dependent on the weight of the towed load. Consult with hitch receiver manufacturer for further information.

N/A = not available at time of printing.

*UVW and CCC are found on the cargo carrying capacity label in each RV.

IMPORTANT – PLEASE READ: Product information, photography and illustrations included in this publication were as accurate as possible at the time of printing. For further product information and changes, please visit our website at www.fleetwoodrv.com or contact your local Fleetwood dealer. Prices, materials, design and specifications are subject to change without notice. All weights, fuel, liquid capacities and dimensions are approximate. Fleetwood has designed its recreational vehicles to provide a variety of uses for its customers. Each vehicle features optimal seating, sleeping, storage and fluid capacities. The user is responsible for selecting the proper combination of loads (i.e. occupants, equipment, fluids, cargo, etc.) to ensure that the vehicle's capacities are not exceeded.