

*FLEETWOOD.RV*

*faceArron®*

1 9 9 9

# *E* VOLUTION OF A LEGEND.

At Fleetwood RV, we've been making America's favorite recreational vehicles for nearly 50 years. We've done it by building honest value, rugged dependability and peace of mind into every one of them. The legacy continues with the 1999 Pace Arrow. It's a unique combination of traditional value and refined luxury. Created to give you the chance to chase your dreams wherever they take you, your Pace Arrow is a fresh approach to traveling in style. From the gleaming brass to the rich oak, its residential interior is a sophisticated balance between relaxed elegance and convenient practicality. There's a pantry with pullout baskets, a passenger-side workstation for your desktop computer and day/night pleated shades throughout. The living room fabrics feature flat woven jacquard or tapestries that are as durable as they are elegant. An island queen-width bed is at the heart of the color-coordinated bedroom, and the bathroom features an open, airy skylight shower. There are several floor plans with our EZ Glide™ Room Slide-out System, which effortlessly makes your RV more spacious. Our new EZ Store™ Storage System moves with the slide-out room, so you always have easy access to the storage area below. In other words, Pace Arrow is enough to keep you from ever missing home again.

## 1999 PACE ARROW SPECIFICATIONS

Chevrolet Chassis	31E	33G	34N	35J	35K	37S
Engine CID	454	N/A	N/A	454	454	454
Wheel Base	190"	N/A	N/A	208"/247"	208"/247"	208"/247"
GVWR lbs <sup>1</sup>	16,500	N/A	N/A	20,000	20,000	20,000
GCWR lbs <sup>2</sup>	20,000	N/A	N/A	21,000	21,000	21,000
GAWR (front) lbs <sup>3</sup>	5,500	N/A	N/A	5,500	5,500	5,500
GAWR (rear) lbs <sup>3</sup> (incl. tag)	11,000	N/A	N/A	14,500	14,500	14,500
Hitch Rating/Tongue wt. lbs	3,500/250	N/A	N/A	3,500/250	3,500/250	3,500/250
Fuel Capacity (gal/lbs)	75/450	N/A	N/A	75/450	75/450	75/450

Ford Chassis	31E	33G	34N	35J	35K	37S
Engine CID	415	415	415	415	415	415
Wheel Base	190"	208"	208"	208"	208"	228"
GVWR lbs <sup>1</sup>	18,000	20,500	20,500	20,500	20,500	20,500
GCWR lbs <sup>2</sup>	21,500	24,000	24,000	24,000	24,000	24,000
GAWR (front) lbs <sup>3</sup>	7,000	7,000	7,000	7,000	7,000	7,000
GAWR (rear) lbs <sup>3</sup> (incl. tag)	11,000	13,500	13,500	13,500	13,500	13,500
Hitch Rating/Tongue wt. lbs	3,500/250	3,500/250	3,500/250	3,500/250	3,500/250	3,500/250
Fuel Capacity (gal/lbs)	75/450	75/450	75/450	75/450	75/450	75/450

Dimensions	31E	33G	34N	35J	35K	37S
Length	31' 2"	33' 2"	34'10"	35' 2"	35' 2"	37' 2"
Height (w/roof A/C)	11' 9"	11' 9"	11' 9"	11' 9"	11' 9"	11' 9"
Width	102"	102"	102"	102"	102"	102"
Interior Height	79"	79"	79"	79"	79"	79"
Interior Width	96"	96"	96"	96"	96"	96"

Liquid Capacities (gallons)	31E	33G	34N	35J	35K	37S
Fresh Water Holding	100	100	100	100	100	100
Black Water Holding	50	50	50	50	50	50
Grey Water Holding	50	50	50	50	50	50
Appliance LPG Tank*	25	25	25	25	25	25

<sup>1</sup> GVWR (Gross Vehicle Weight Rating): Maximum permissible weight of this motor home. The GVWR is equal to or greater than the sum of the unloaded vehicle weight plus the net carrying capacity.

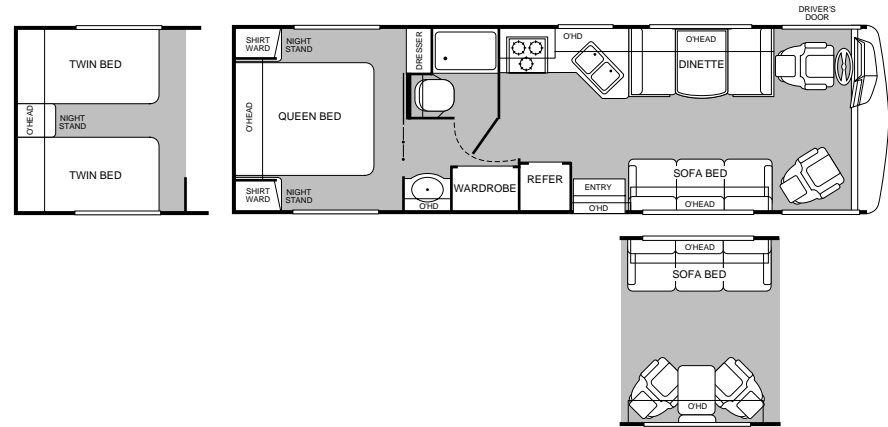
<sup>2</sup> GCWR (Gross Combination Weight Rating): Value specified by the motor home manufacturer as the maximum allowable loaded weight of this motor home with its towed trailer or towed vehicle.

<sup>3</sup> GAWR (Gross Axle Weight Rating): Maximum permissible loaded weight a specific axle is designed to carry.

\*Tank manufacturer's listed water capacity (WC) actual filled. LP capacity is 80% of listing due to safety shut off required on tank.

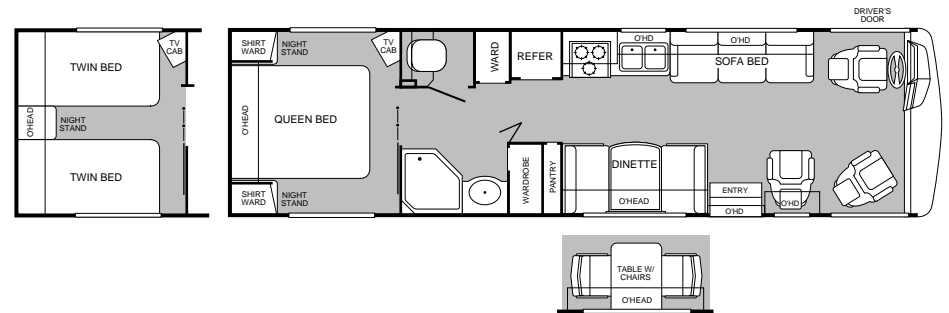
MODEL  
**31E**

- Queen bed or opt'l twin beds
- Split bathroom
- Dinette and sofa bed
- Opt'l sofa bed and lounge chairs
- Mid-cabin entry door



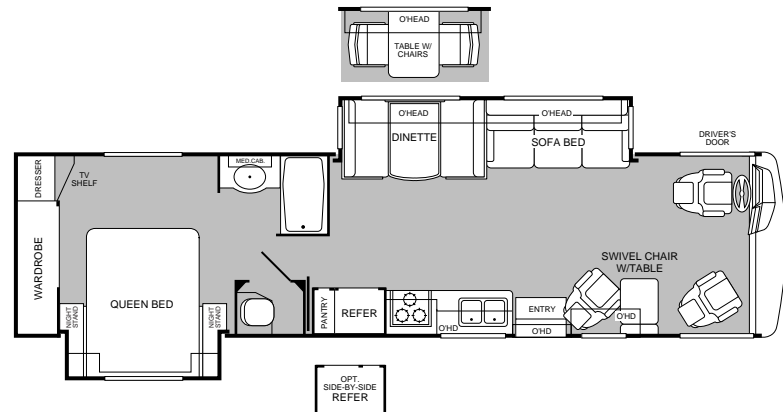
MODEL  
**33G**

- Queen bed or opt'l twin beds
- Dinette or opt'l table w/chairs
- Lounge chair
- Private toilet
- Dual wardrobes



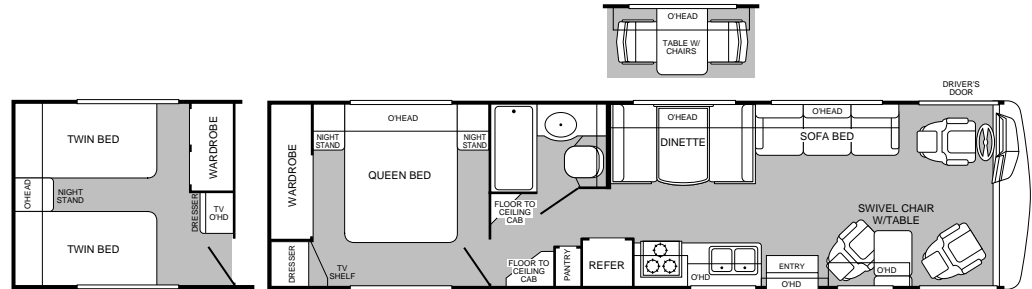
MODEL  
**34N**

- Living room slide-out
- Swivel chair w/table
- Bedroom slide-out
- Extra large wardrobe
- Opt'l side-by-side refrigerator



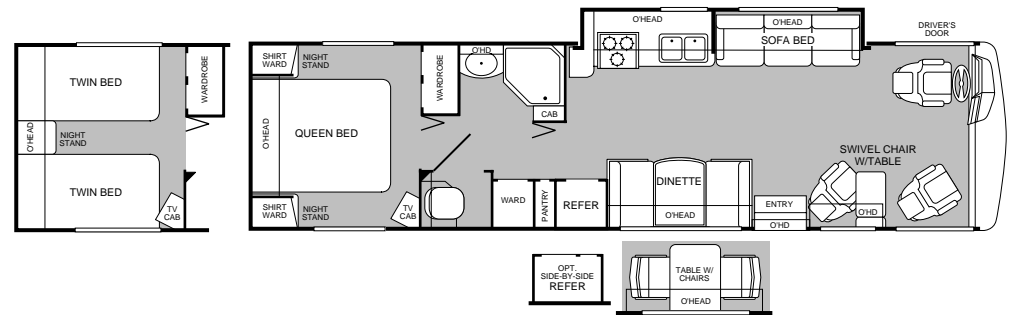
MODEL  
**35J**

- Dinette or opt'l table w/chairs
- Fully enclosed bathroom
- Bedroom wardrobe w/dresser
- Swivel chair w/table
- Opt'l twin beds



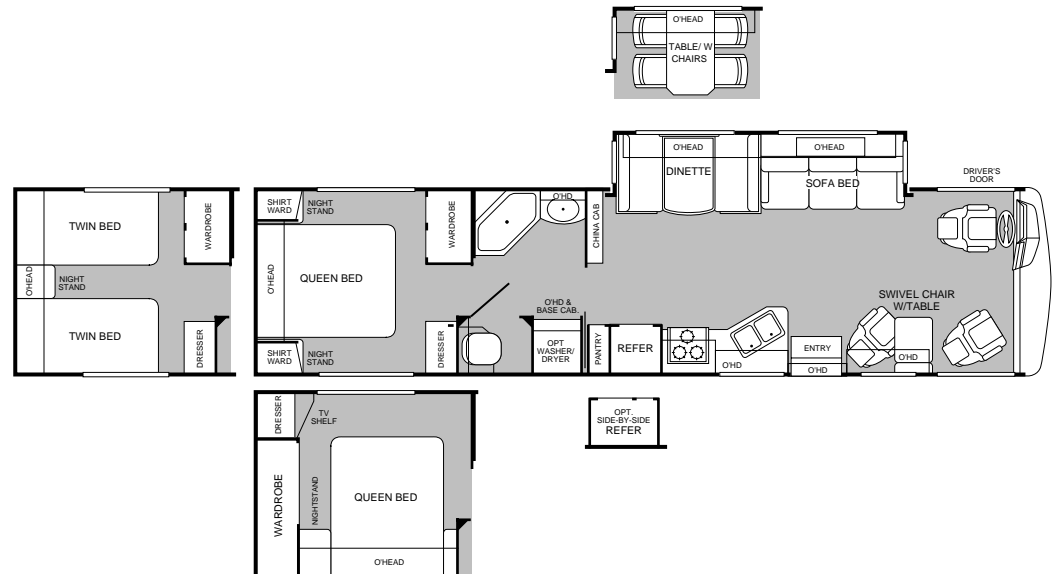
MODEL  
**35K**

- Galley slide-out
- Dinette or opt'l table w/chairs
- Dual wardrobes
- Opt'l side-by-side refrigerator
- Opt'l twin beds



MODEL  
**37S**

- Living room slide-out
- 3 bedroom configurations
- Dinette or opt'l table w/chairs
- Opt'l side-by-side refrigerator
- Opt'l washer/dryer



# 1999 PACE ARROW FEATURES AND AVAILABLE EQUIPMENT

## Exterior Automotive and Electrical, *Standard Equipment*

Large Curved Aerodynamic Windshield	Undercoating	Valve Extenders
Steel Surface on Bulkhead Raised Floor	Windshield Wipers w/Wet Arm	Halogen Headlights
Trailer Hitch w/4-point Electrical Hook-up	Rear Vision Camera	Underhood Utility Light

## Interior Automotive, *Standard Equipment*

Intermittent Wiper Control	Multi-position Sun Visors	Engine Cover Convenience Tray
Driver/Passenger Side Window Shades	Driver's Door w/Manual Window	Cruise Control
Tilt-up Instrument Panel	Low Profile Engine Cover	Auxiliary Start Circuit
Soft Surface Automotive Dash	Battery Disconnect	Auto A/C/Heater Combo
Radio Switch-Main/Aux.	Computer Workstation in Dash	Tilt Steering Wheel
Radio w/Cassette/MX Electronic Tuner	Reclining Captains Chairs	Driver/Passenger Side Panels

## Automotive, *Options*

	31E	33G	34N	35J	35K	37S
Single Roof High Efficiency A/C w/Solar Panels	Opt	Opt	Opt	Opt	Opt	Opt
Dual Roof High Efficiency A/C w/Solar Panels	Opt	Opt	Opt	Opt	Opt	Opt
Digital Satellite System Manual Lift	Opt	Opt	Opt	Opt	Opt	Opt

## Exterior, *Standard Equipment*

Full Fiberglass Front-end Cap	Lower Body Accent Paint	Porch Light
One-piece Swingdown Engine Access Door	Exterior Shower	Spare Tire in Basement
Fiberglass Front Quarter Panels	Power Entry Step	Slider Windows-Dual Pane
Fiberglass Rear Wheel Trim	Aerodynamic Bus Styling	Front Grille
Radius Door Entry w/Deadbolt Latch	Roof Ladder	Pass-through Storage
Insulated Luggage Doors	20' Sewer Hose	Exterior Assist Handle
Awning Rail/Drip Molding (both sides)	Dual Battery Charge Control	Park Cable Receptacle
3 Colorway Graphics to Match Decor	Stainless Steel Wheel Simulators	Lights in Compartments
Polyethylene Luggage Compartment Boxes	Rear View Camera	Gas Lift Strut Supports
Hidden Stainless Steel Catch Rods	Remote Heated Rearview Mirrors	Utility Compartment
Carpeted Luggage Compartments	Single Paddle/Metal Latches	Steel Seal Frames
Continuous One-piece Bulb Seal		

Exterior, <i>Options</i>	31E	33G	34N	35J	35K	37S
Hydraulic Levelers	Opt	Opt	Std	Opt	Std	Std
Awning	Opt	Opt	Opt	Opt	Opt	Opt

## Appliances, *Standard Equipment*

Front 20" TV in Overhead	6-gallon Quick Recovery Water Heater w/D.S.I.	
Single Lever Galley Faucet	22" 3-burner, High-output Cooktop w/Oven	
8-cu. ft. Refrigerator (lg. dbl. doors)	Folding Range Cover	Water Heater Bypass
Demand Water Pump w/Filter	Marine Toilet	A/C Ready
TV Antenna	Phone Jack	Power Bath Vent
Rear Speakers in Bedroom		

## Appliances, *Options*

	31E	33G	34N	35J	35K	37S
Furnace 20m BTU/34m BTU (dual)	N/A	N/A	N/A	N/A	N/A	Std
Furnace 34m BTU	Std	Std	Std	Std	Std	N/A
Light/Power Range Hood	Std	Std	Std	Std	N/A	Std
Microwave	Std	Std	Std	Std	N/A	Std
Convection Microwave	Opt	Opt	Opt	Opt	Std	Opt
Washer/Dryer	N/A	N/A	N/A	N/A	N/A	Opt
12-cu. ft. Side-by-side Refrigerator	N/A	N/A	Opt	N/A	Opt	Opt
w/Ice Maker						

## Platform Construction and Body Structure, *Standard Equipment*

Basement Floor Configuration	Steel Truss System	Vacubond Lower Floor
Heated Water & Holding Tank Compartments	Radius Roof w/Duct for A/C	Vacubond Upper Floor
Vacubond Walls w/Smooth Ext. Fiberglass	Steel Wall/Ceiling Framing	Rubber Roof
Steel Outriggers		

# 1999 PACE ARROW FEATURES AND AVAILABLE EQUIPMENT

## Interior, Standard Equipment

Woven Jacquard Feature Fabrics	Oak-faced Cabinets & Drawers	Crown Molding
Skylight in Tub/Shower	Bedsread w/Decor Pillows	Innerspring Mattress
Brass Finished Cabinet Hardware	Large Double Stainless Steel Sink	Carpet Pad
Wall-to-wall Nylon Carpet	Raised Panel Cabinet Doors	3-point Front Seat Belts
Radius Corner Cabinetry	Roller Guide Drawer Slides w/Transit	Ship Locks
Wood Trim Table & Countertops	Wood Drawers	Vinyl Floor Covering
Slide-out Dinette Bins w/Locks	Wainscot Paneling	Residential Seat Styling
Entry Rail (oak & brass)	Molded Tub/Shower w/One-piece	Enclosure
Window Coverings (day/night shades)	Trash Basket in Galley	Solid Divider Doors
Bright Brass Bath Accessories	Sink Cutting Board	Miniblinds (metal)
3 Interior Decors	Fantastic® Power Roof Vent	
Adjustable Cabinet Shelves (selected cabinets)		

Interior, Options	31E	33G	34N	35J	35K	37S
Glass Shower Door w/Brass Frame	N/A	Std	N/A	N/A	Std	Std
Folding Shower Door	Std	N/A	Std	Std	N/A	N/A
Slide-out Pantry w/Transit Locks	N/A	Std	N/A	N/A	N/A	N/A
Headboard	Std	Std	N/A	N/A	Std	Std
Compact Disc Player	Opt	Opt	Opt	Opt	Opt	Opt
Rear Television w/Remote	Opt	Opt	N/A	N/A	Opt	Opt
Rear TV w/Island Queen Bed	N/A	N/A	Opt	Opt	N/A	Opt
VCR	Opt	Opt	Opt	Opt	Opt	Opt
Sofa Lock	Opt	Opt	Opt	Opt	Opt	Opt
Sofa & Lounge Chairs w/Table	N/A	N/A	Std	Std	Std	Std
Free Standing Dinette w/Chairs	N/A	Opt	Opt	Opt	Opt	Opt
Twin Beds/Nightstands	Opt	Opt	Opt	Opt	Opt	Opt
Island Bed w/Full Wardrobe	N/A	N/A	Std	Std	N/A	Opt

## Interior Lighting, Standard Equipment

Two Fluorescent Ceiling Lights w/Dual Bulb	Wardrobe Lighting	Decor Lighting
Incandescent Lighting	Makeup Lights in Bath	

## Electrical, Standard Equipment

120v/12v Wire Raceway	(2) Water Pump Switching	30-amp Service
Dual 6v/Deep Cycl. 218-amp House Batt.	Wall Switches	VCR Ready
120v/12v AC/DC Convert. Central Elect. Panel w/Charger		Patio Receptacle (GFI)

Electrical, Options	31E	33G	34N	35J	35K	37S
ECC Climate Control	Opt	Opt	Opt	Opt	Opt	Opt
High Efficiency A/C w/Solar Battery Charger	Opt	Opt	Opt	Opt	Opt	Opt
ECC w/Dual A/C	Opt	Opt	Opt	Opt	Opt	Opt
4.0kw Onan® Generator Microlite	Opt	Opt	Opt	Opt	Opt	Opt
5.5kw Onan® Generator	Opt	Opt	Opt	Opt	Opt	Opt
7.0kw Onan® Generator	Opt	Opt	Opt	Opt	Opt	Opt

Slide-out, Options	31E	33G	34N	35J	35K	37S
Galley	N/A	N/A	N/A	N/A	Std	N/A
Living Room	N/A	N/A	Std	N/A	N/A	Std
Bedroom	N/A	N/A	Std	N/A	N/A	N/A

Sleeping Accommodations, Standard	31E	33G	34N	35J	35K	37S
Convertible Sofa	46"x76"	46"x76"	N/A	46"x76"	46"x76"	46"x76"
Sleeper Sofa	N/A	N/A	52"x72"	N/A	52"x72"	52"x72"
Dinette	37"x74"	37"x74"	42"x74"	42"x74"	37"x74"	42"x74"
Queen Bed	60"x80"	60"x80"	60"x80"	60"x80"	60"x80"	60"x80"

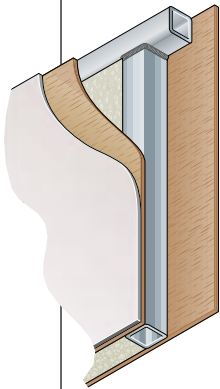
Sleeping Accommodations, Options	31E	33G	34N	35J	35K	37S
Twin Beds w/Nightstand	38"x74"	38"x74"	N/A	38"x74"	38"x74"	38"x74"
Sleeper Sofa	N/A	N/A	N/A	N/A	52"x72"	52"x72"

## Safety, Standard Equipment

Smoke Detector	Carbon Monoxide Detector	LPG Detector
Fire Extinguisher	Emergency Exit Window	

# WHEN THE DUST SETTLES, THERE'S NOT AN RV IN THE WORLD THAT'S TESTED LIKE A FLEETWOOD RV.

If anyone loves to tear an RV apart, it's us. Because at Fleetwood RV nothing's more important than your safety and comfort. While our improvements aren't all visible to the eye, we commit millions of dollars a year in product development and research to build what we believe are the finest RVs in the world.



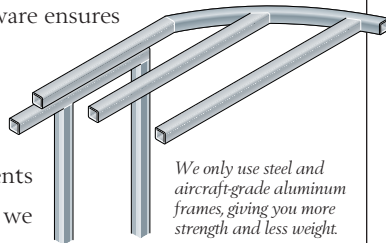
*Vacubond construction ensures that every roof, wall and floor is completely sealed.*

It all starts with advanced computer analysis of new prototype designs. Once built, the prototypes undergo rigorous load bearing and weight distribution stress tests. Stringent load analysis software ensures improved reliability.

Then the relentless testing and re-testing of components begins. In a couple of weeks we can simulate years of real world

use. Slide-out mechanisms have to open and shut thousands of times without a complaint. Seat belts must withstand more than three-ton stress levels without a whimper. And doors have to endure tens of thousands of slammings without losing their composure.

At the end of the day, we've thrown just about anything and everything we can at our units, just to make sure we have the best designed and most thoroughly tested RVs in the world. Then we back them with a limited 1-year/3-year warranty supported by Fleetwood RV dealers throughout the U.S. and Canada. So you have what we believe to be the best-handling, safest, most comfortable RV anywhere.



*We only use steel and aircraft-grade aluminum frames, giving you more strength and less weight.*

Dear Friend,

Here at Fleetwood RV, we have over 200 people working on research and development. But we get our best ideas when we hit the road in our recreational vehicles. Talking to people like you and noticing for ourselves little ways to make RVing more comfortable, more convenient and more fun.



If I had two pieces of free advice to give a friend in the market for an RV, the first would be to get a Fleetwood RV. Not because we need to sell one more. Heck, we sell more than anyone else. But because I know we build the best product out there for the money.

Second, really think about your dealer. He has to be someone you trust for advice, service and accessories. Only the best get to be Fleetwood RV dealers in the first place. Then we work with them to continually improve customer satisfaction. That's why 9 out of 10 owners would recommend their Fleetwood RV to a friend and 9 out of 10 of them would also recommend their Fleetwood RV dealer.

I hope that helps. And I also hope I see you out there, somewhere in this beautiful world, enjoying your new Fleetwood RV while I'm out there doing the same.

John C. Crean

A handwritten signature in blue ink that reads "John C. Crean". The signature is fluid and cursive.

Chairman Emeritus and Founder  
Fleetwood Enterprises, Inc.

*Your local Fleetwood RV dealer is:*

*If your local dealer is not indicated, write to the address below, or call us toll free 24 hours a day at 1-800-444-4905. Or visit our Website at <http://www.fleetwood.com>*

**FLEETWOOD RV**

**America's Favorite Recreational Vehicles**

Fleetwood Enterprises, Inc.  
P.O. Box 2875, Van Nuys, CA 91404-2875

Product information and photography included in this brochure were as accurate as possible at the time of publication. Subsequent refinements may be evident in the actual product. Prices and specifications are subject to change without notice. All fuel and liquid capacities are approximate and dimensions are nominal. Fleetwood has designed its motor home brands to provide a variety of potential uses for its customers. Each unit features the optimum storage, fluid, seating and sleeping capabilities. Though the customer enjoys this potential, he/she also has the responsibility to select the proper combinations of loads without exceeding the chassis weight capacities.