

Pace Arrow

CLASS A GAS

IT'S BEEN ON YOUR WISH LIST
FOR YEARS. ISN'T IT TIME?



2009 PACE ARROW

 FLEETWOOD®

IN A PACE ARROW, YOUR REPUTATION PRECEDES YOU.

Everyone knows Pace Arrow as one of the most luxurious Class A motor homes on the market – and many aspire to own it. That's because inside and out, from the glossy exterior to its stainless steel appliances, Pace Arrow is drop-dead gorgeous. There's no need to invest in upgrades, because this coach has it all, from rich carpeting to supple Ultraleather™ upholstery to sophisticated electronics. It's why Pace Arrow raises the bar above the rest.

Quality



There's no cutting corners. Skilled craftsmen build every Fleetwood RV for maximum durability and longevity.



PACE ARROW



PACE ARROW 38P shown in After Midnight décor with Plantation Cherry wood cabinetry.

Why Buy Pace Arrow?





THE FRONT ENTERTAINMENT SYSTEM puts a big screen and high-quality sound right up front. Enjoy a 26" Samsung® LCD HDTV with a DVD player and home theater sound system, masterfully framed in wood cabinetry.

THE WRAP-AROUND DINETTE (optional) provides a comfortable, restaurant-like setting to enjoy your favorite meals. What's more, the table lowers easily and swivels for the optimal position. How's that for multi-functionality?



Class A All The Way

Pace Arrow sits at the very pinnacle of gas motor homes, with a widespread reputation as one of the most luxurious Class A coaches on the road.

Exceeds Expectations

Discriminating buyers love Pace Arrow, because the finest features and highest quality materials come standard.

Just Like Home

With the appointments of a custom home, Pace Arrow feels comfortably familiar. Except this home can go wherever the wind blows.

Engineered for Comfort

Dozens of features within Pace Arrow are designed to make life easier, more comfortable, and more convenient.

State-of-the-Art Entertainment

Pace Arrow includes an extraordinary entertainment package to bring you crystal-clear, hi-def TV throughout the coach...and even outside.



NOT JUST FOR SHOW. FOR GO.

Pace Arrow is a definite showpiece, an impressive setting to entertain friends and family. That makes it easy to forget that this coach is built for the road. Whether you want to visit Gettysburg or tour Napa Valley vineyards, Pace Arrow can take you there. When you're done exploring the great outdoors, you'll appreciate Pace Arrow's wide - open space inside, thanks to floor plans with double, triple and full-wall slide-outs.

Trust



More people trust Fleetwood. After all, we've spent over 50 years perfecting RVs, earning the loyalty of generations of RVers.



PACE ARROW



OVERHEAD CABINETRY features hardwood, raised-panel doors with an arched design and European-style hidden hinges. Inside, it's deep enough to store full-size plates, and the shelves are adjustable and lined to protect your dishes in transit.

THE DINETTE hosts a romantic dinner for two underneath a big picture window – perfect for a sunset view. Or have friends join you for cards, playing on the polished wood tabletop.





THE 4-DOOR REFRIGERATOR from Dometic® boasts an icemaker and 12 cubic feet of room for your favorite foods. The 4-door style ensures room for trays of hors d'oeuvres. Nearby, the pantry holds your cereal, snacks and ingredients in convenient pull-out baskets for easy loading.



FULLY EXTENDING DRAWERS roll all the way out, so you can store things in the very back. The deep size accommodates your pots and pans, too.



THE GALLEY was designed to please both the interior designer and the chef in you. With rich hardwood cabinetry, brushed nickel hardware and arched glass inserts, it's dressed to impress. While it's fully equipped with a convection microwave, refrigerator, range, oven, and even a coffee maker so you can brew your gourmet blend on the road.



THE MOEN® FAUCET is graceful and practical, with a single-lever control, pull-out sprayer and soap dispenser.

SINK COVERS are made of deluxe solid surface material and dramatically increase your countertop space.





RETREAT TO YOUR PRIVATE OASIS.

Pace Arrow's bedroom suite provides an oasis of comfort, privacy and indulgence after an active day. With its spacious layout and LCD HDTV, it's the perfect place for relaxing. Under a luxurious bedspread, acres of cushy mattress beckon (with a ton of carpeted storage space hidden underneath). Designer lighting is perfect for enjoying a book, with a cup of hot cocoa on your nightstand. With a bedroom like this, you'll enjoy sweet dreams before you even fall asleep.

Passion



We're truly passionate about the RV lifestyle. Fleetwood was founded by RV enthusiasts, and that tradition continues today.



PACE ARROW



THE MIRRORED WARDROBE lets your clothing travel first class, with roomy racks, drawers, and cedar lining. The mirror on the front adds sparkle to the room and a head-to-toe reflection of you.



THE BATHROOM with its richly appointed curved shower has the look and feel of a fine hotel. A Moen® designer-line faucet splashes into the highly polished stainless steel sink, surrounded by a solid surface countertop. There's plenty of storage in the fine wood cabinetry, and elegant lighting ensures that you look your best.



THE BEDROOM SUITE offers your private slice of heaven at the end of the day. Sink into the Restonic® deluxe queen-size pillow top mattress and you'll see why it's one of the most comfortable mattresses made. (King bed option available on select models.)

36D shown in Aged Bronze décor with Plantation Cherry wood cabinetry.



THE BEDROOM ENTERTAINMENT CENTER places a large 19" Samsung® LCD HDTV in the perfect viewing position to enjoy from your cozy bed.

THE WASHER/DRYER (optional) is a must for long journeys on the road. Spin a load while you watch your favorite movie, and close the cabinet doors to hide it away.



NO MATTER WHAT COLOR, IT WOULD LOOK GREAT IN YOUR DRIVEWAY.

Your Pace Arrow looks handsome whether parked in front of your house or traveling down the highway. That's because we carefully apply DuPont® paint in a two-stage process to give the finish that mirror-like shine and incredible durability. Take your pick from seven colors.

SCHEME 1 GRAPHICS*

GRANITE PEARL



CHARCOAL SMOKE



SHALESTONE



IRON



WHITE PEARL



PLATINUM



GOLD RUSH



GOLD RUSH
SHOWN IN SCHEME 2 GRAPHICS



INTERIOR DÉCORS

We've carefully chosen all the fabrics and finishes to work together for an ambience of elegance.

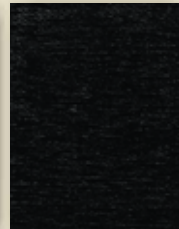
Now all you have to do is select your favorite interior motif and wood finish. If you can.

AFTER MIDNIGHT

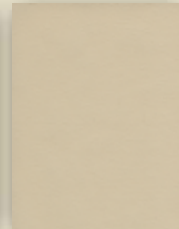
Living/Dining Room



Dinette Cushions



Accent Fabric



Ultraleather™
Driver and Front
Passenger Seats,
Sofa

Bedroom



Bedspread &
Pillow Shams



Accent Fabric

Living/Dining Room



Dinette Cushions



Accent Fabric



Ultraleather™
Driver and Front
Passenger Seats,
Sofa

Bedroom



Bedspread &
Pillow Shams



Accent Fabric

Living/Dining Room



Dinette Cushions



Accent Fabric



Ultraleather™
Driver and Front
Passenger Seats,
Sofa

Bedroom



Bedspread &
Pillow Shams



Accent Fabric

WOOD FINISHES



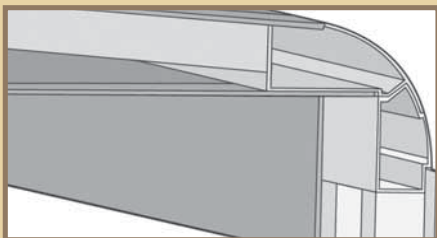
Plantation Cherry



Symphony Cherry

FULLY EQUIPPED WITH AN ARRAY OF OUTSTANDING FEATURES.

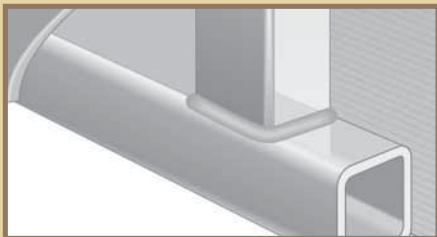
Now that you've seen the inside of Pace Arrow, you probably guessed that the outside boasts fabulous features too. And you'd be right. Here are just a few...you'll have to discover the rest for yourself.



INTERLOCKING CEILING-TO-SIDEWALL CONSTRUCTION helps keep the box square. This assures a proper cabinet fit.



INTERLOCKING FLOOR-TO-SIDEWALL CONSTRUCTION locks tightly to keep out water, dust and noise, and helps eliminate squeaks and rattles.



VACU-BOND® SIDEWALL CONSTRUCTION creates a strong, weather-resistant structure. The sidewalls, floor and ceiling are Vacu-bonded to a durable metal frame, far superior to the pinch roll method our competitors often use.



PACE ARROW

① ELECTRIC PATIO AWNING provides shade, keeps the inside cool, and retracts at the touch of a button.

② 22½" WHEELS of polished aluminum make for a smooth ride and exterior dazzle.

③ TUFF-PLY ROOF is UV resistant and insulated to keep you warm in winter, cool in summer.

④ DUAL AIR CONDITIONERS keeps your coach cool, and special "chill grills" shower you with refreshing cold air.

⑤ DIAMOND SHIELD (optional) is a transparent, 8 mil. urethane film designed to protect your paint finish on the lower front cap.

⑥ ONE-PIECE PANORAMIC WINDSHIELD gives you an unobstructed view of the road and scenery.

⑦ REAR VISION CAMERA transmits a live video feed to a color monitor at the driver's cockpit to help you back up safely.

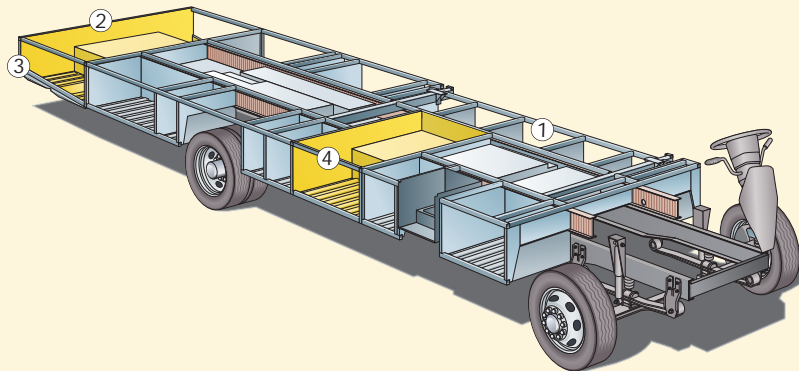
⑧ 4-POINT LEVELING JACKS automatically level your coach at the touch of a button.



Vehicle shown in Gold Rush Scheme 1 exterior graphics.

POWER PLATFORM®. BUILT FOR STRENGTH, STABILITY AND PASS-THROUGH STORAGE.

Fleetwood's patented Power Platform® is the envy of our competitors. The ultra-strong chassis provides enormous storage space, lined with molded plastic for easy cleaning and lit to help you see after dark. The holding tanks are positioned in the bottom to enhance balance, and enclosed so they can be heated in cold weather to help prevent freezing.



- ① EZ Store
- ② Pass-Through Storage Compartment
- ③ Large Towing Capacity†
- ④ Storage Maximizer

Drawings are for illustrative purposes only to highlight aspects of motor home construction. Actual motor home design depends on model and is subject to change.

† The chassis manufacturer recommends the installation of a supplemental brake control system to activate the brakes on the vehicle or trailer you are towing. Hitch receiver ratings expressed are maximum for the hitch receiver installed and may require the purchase of additional equipment that is dependent on the weight of the towed load. Consult with hitch receiver manufacturer for further information.

ENHANCED SAFETY. THE ULTIMATE LUXURY.

To keep you safe, Fleetwood goes above and beyond by integrating dozens of safety features into the Pace Arrow. From four-wheel ABS brakes to multiple safety-belted seating locations to a rear-vision camera to help you back up safely, we've got you covered. You can depend on us for superior construction and safety that goes the distance...no matter how far your journey.

Safety



You've got precious cargo. So we've engineered dozens of innovative safety features into our motor homes to give you more peace of mind.

THE DRIVER'S COCKPIT is ergonomically designed with a tilt steering wheel. The driver and passenger chairs are covered in soft Ultraleather™, and the driver's door provides easy access. The optional power sun visors shade your eyes at the touch of a button.



PASS-THROUGH STORAGE (most models) holds large items such as chairs, sports gear and more — and you can access it from either side of the coach.



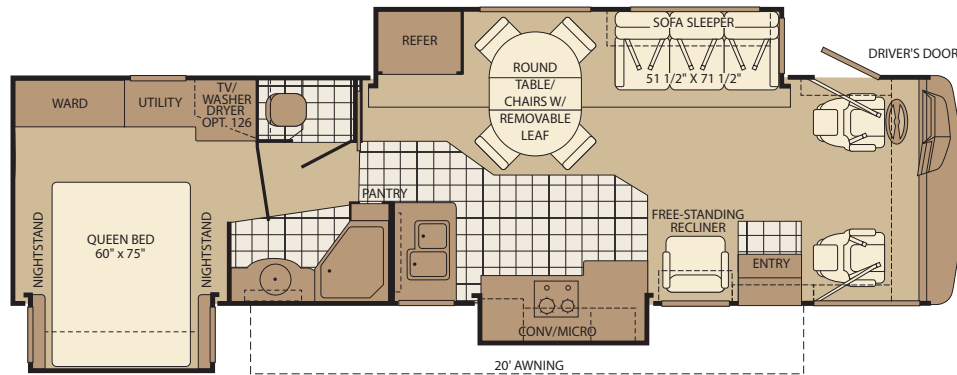
EXTERIOR ENTERTAINMENT CENTER lets you enjoy fresh air and your favorite shows. This option includes a Samsung® 19" LCD HDTV and AM/FM radio with CD player.

THE EZ STORE COMPARTMENT is the perfect place for very long items such as golf equipment. It moves with the slide-out so you don't have to stoop underneath.



PACE ARROW FLOOR PLANS

35A

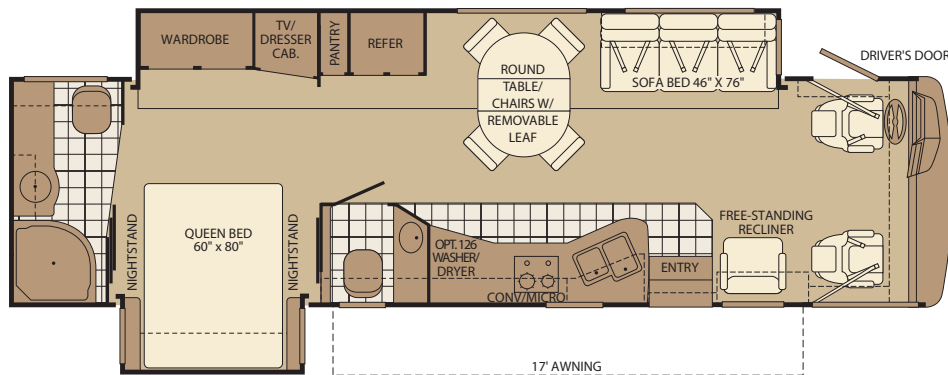


Interior Storage Capacity: 119 cu. ft.

Exterior Storage Capacity: 167 cu. ft.

- Spacious, walk-through bath
- Impressive galley for entertaining
- Available Options: 126, 491, 833, 834

36D



Interior Storage Capacity: 123 cu. ft.

Exterior Storage Capacity: 127 cu. ft.

- Industry leading full-wall slide plan for maximum space
- Added convenience of a bath and a half
- Available Options: 126, 491, 807, 833, 834

Service

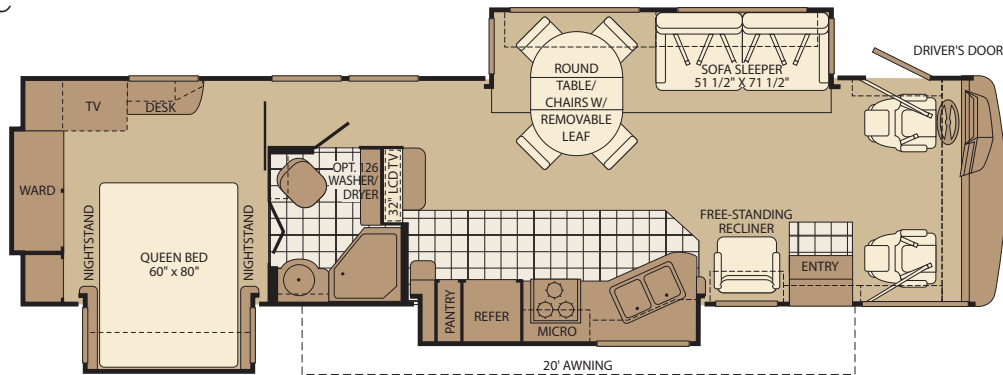


Help is nearby. When you need an upgrade or repair, you'll find Fleetwood dealers all across North America ready to assist you.



PACE ARROW

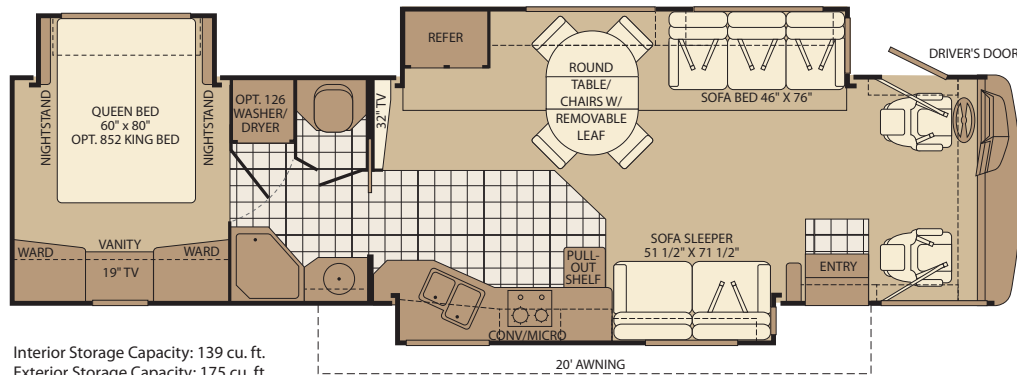
37C



Interior Storage Capacity: 169 cu. ft.
Exterior Storage Capacity: 125 cu. ft.

- Triple slide-outs create an extra spacious interior
- 32" mid-coach LCD HDTV
- Available Options: 126, 491, 833, 834

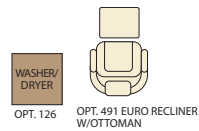
38P



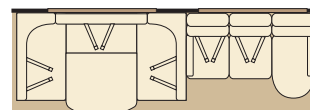
Interior Storage Capacity: 139 cu. ft.
Exterior Storage Capacity: 175 cu. ft.

- Entertain in elegance with the U-dinette and integrated sofa option
- 32" mid-coach LCD HDTV
- Available Options: 126, 632, 833, 834, 852

OPTIONS



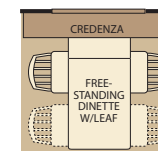
OPT. 126 OPT. 491 EURO RECLINER W/OTTOMAN



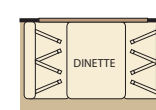
OPT. 632 U-DINETTE W/SOFA



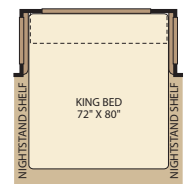
OPT. 807 SOFA SLEEPER



OPT. 833 FREE-STANDING DINETTE WITH CRENZIA



OPT. 834 DINETTE



OPT. 852 KING BED

Seatbelt configuration may vary depending on options chosen.

STANDARD FEATURES

INTERIOR

INTERIOR – THROUGHOUT

- 10 Gallon Quick Recovery Water Heater w/Direct Spark Ignition (Gas/Electric)
- 120V/12V AC/DC Converter Central Electrical Panel
- 20,000/30,000 Btu Dual Furnaces (Except 35A)
- 3 Way Water Pump Switch
- 3 Striking Interior Theme Décor
- 5.5kW Onan® Quiet Generator
- 50 Amp Service
- Alder Stained Drawer Fronts and Raised Panel Cabinet Doors, Arched Designs
- Laminate Flooring
- Automotive Wire Harnesses
- Battery Disconnect System
- Brushed Nickel Finish Cabinet Hardware
- Centralized Monitor Panel w/Slide-Out Controls
- Complete TuffPEX Plumbing System
- Décor Lighting
- Deluxe Roller Bearing, Full Extension Drawer Guides and Transit-Ship Locks
- European Style Hidden Cabinet Door Hinges
- Dual 6V/Deep Cycle House Batteries
- Dual Roof A/C High Efficiency w/Solar Panel and Chill Grills
- Engine Cover Convenience Tray
- Nylon Carpet w/Pad
- Fluorescent Ceiling Lights w/Dual Bulbs
- Halogen Lighting
- Solid Divider Doors
- Telephone Jack-In Dash
- Vinyl Ceiling, Cushioned
- Wall Switches
- Water Heater Bypass
- Whole Coach Water Filtration System
- Wood Drawers
- DSS Manual Lift Satellite Dish

DRIVER CONVENIENCE

- 3 Point Seat Belts at Driver & Front Passenger Seats
- AM/FM Radio w/CD Player, Satellite Radio Ready
- Auto A/C Heater Combo
- Auxiliary Start Circuit
- Computer Workstation In-Dash
- Cruise Control
- Dash Fans
- Intermittent Wipers
- Digital Compass and Outside Temperature Gauge
- Double Swivel Sun Visors w/Map Pockets
- Driver's Door w/Power Window Lift
- Driver/Front Passenger Ultraleather™ Captain's Chairs w/Reclining Back/Slide Controls w/Power Driver Seat
- ICC Switch
- Low Profile Engine Cover
- Radio Switch Main/Auxiliary Power
- Tilt Steering Wheel

LIVING ROOM

- 26" Samsung® LCD HDTV in Front Overhead
- Dual Glazed Slider Windows w/Day/Night Shades
- DVD Home Theater Sound System
- Flush Floor Living Room Slide-Out
- Free-Standing Reclining Chair w/Security Bracket
- TV Antenna
- Ultraleather™ Furniture w/Throw Pillows

GALLEY

- 12 cu.ft. Stainless Steel 4-Door Dometic® Refrigerator w/Ice Maker
- Solid Surface Countertops
- Coffee Maker
- Free-Standing Dinette Table w/Leaf and Four Chairs (2 Folding Chairs)
- Solid Surface Galley Sink
- Mirrored Galley Backsplashes
- Over the Range Convection Microwave Oven, Stainless w/Built-In Rangehood and Light
- Radius Corner Cabinetry
- Hinged Solid Surface Range Cover
- Single Lever Moen® Galley Faucet w/Pullout Sprayer
- Soap Dispenser
- Solid Wood Dinette Table Tops
- Waste Basket
- Fan-Tastic® Power Roof Vent

BEDROOM

- 19" Samsung® LCD HDTV
- Bedspread w/Deluxe Fabric Headboard
- Rear Speakers
- Restonic® Deluxe Pillow Top Innerspring Mattress
- Second Phone Jack
- Wardrobe Lighting
- Wardrobes w/Mirrored Doors, Cedar Lining and Wire Shelf

BATHROOM

- Beveled Mirror in Lavvy (Select Models)
- Brushed Nickel Bath Accessories
- Metal Designer Moen® Lavvy Faucet
- Fan-Tastic® Power Roof Vent
- Molded Acrylic Shower
- Large Polished Stainless Steel Lavvy Sink
- Porcelain Toilet w/Water Saver
- Shower Dispenser for Lotion, Shampoo, Soap, Etc.
- Single Lever Shower Control, Brushed Nickel, w/Slide Adjustable Shower Head and Soap Dish
- Skylight in Tub/Shower
- Solid Wood Lavvy Door
- Toilet Tank San-T-Flush™ System

SAFETY/CONVENIENCE

- 10 ABC Fire Extinguisher
- Carbon Monoxide Detector/Alarm
- Entry Assist Handle
- Propane Detector/Alarm
- Smoke Detector/Alarm
- Child Safety Tether
- Multiple Seatbelt Locations

EXTERIOR

EXTERIOR – THROUGHOUT

- Choice of Colorways in 2 Graphic Schemes
- Accessory Propane Supply w/Hose
- Aluminum Tube Front Grill
- Aluminum Wheels
- Awning Rail/Drip Molding (Both Sides)
- Dual Battery Charge Control
- Dual Chrome Electric Horns
- Dual Patio Receptacles
- Electric Awning
- Fiberglass Front/Rear Caps
- Fiberglass Front Wheel Well Trims
- Flush Mounted Furnace and Water Heater
- Full-Body Paint
- Park Cable Receptacle
- Patio Awning
- Utility Compartment w/Exterior Shower
- Wrap Around Euro Design Taillights
- Heated Water and Holding Tank Compartments
- Mud Flaps
- One-Piece Panoramic Windshield

AUTOMOTIVE

- 4 Point Automatic Leveling Jacks
- 5,000 lb. Trailer Hitch w/7 Pin Electrical Hook-Up (6,000 lb. w/24K GVWR Chassis)*

SAFETY/CONVENIENCE

- Automotive Safety Glass
- Daytime Running Lights
- Double Power Entry Step w/Light
- Dual Halogen Headlights
- Entry Door w/Screen Door and Deadbolt Lock
- Hydraulic 4 Wheel Disk Brakes w/4 Wheel Anti-Lock Brakes
- Large, Heated Remote Rear View Mirrors w/Built-In Side View Cameras
- Porch Light (Doorside and Roadside)
- Color Rear Vision Monitor/Camera
- Roof Ladder
- Single Motor Windshield Wipers w/Wet Arm
- Swing-Up Engine Access Door
- Underhood Utility Lights
- Winterizing Pick-Up Tube

STORAGE

- Continuous One-Piece Compartment Bulb Seal
- Gas Lift Strut Supports
- Insulated Aluminum Luggage Doors w/Single Paddle Metal Latches & Stainless Steel Hinges
- Lighted Luggage Compartments
- Rotomolded Polyethylene Luggage Compartments
- Steel Luggage Door Seal Frames

BODY STRUCTURE

- Aluminum Interlocking Floor/Wall/Ceiling Framing
- Basement Floor Configuration
- Power Platform® Construction
- Royal Tuff-Ply Radius Roof w/Ducted A/C
- Vacu-bond® Upper/Lower Floors
- Vacu-bond® Walls w/Smooth, High Gloss Exterior Fiberglass

OPTIONS

INTERIOR

INTERIOR

- Auto Locating Satellite Dish
- In Motion Satellite Dish

DRIVER CONVENIENCE

- Sirius Satellite Radio® (6 Month Subscription Included)
- Driver/Passenger Shades w/Power Sun Visor

LIVING ROOM

- Sofa Sleeper (36D)

GALLEY

- 2 Burner Cook Top with Sealed Burners
- Fixed Dinette w/Solid Wood Table and Ultraleather™ High Resiliency Foam Cushions
- Free-Standing Dinette w/Credenza
- Slide-Out Dinette Bins w/Optional Fixed Dinette

BEDROOM

- Washer/Dryer (Select Models)
- Queen Bed Air Mattress
- King Bed Air Mattress (Select Models)

EXTERIOR

EXTERIOR

- Dual A/C w/Heat Pump w/Solar Panel on Front A/C
- Diamond Shield Clear Front Protective Mask
- Exterior Entertainment Center w/Samsung® 19" LCD HDTV and AM/FM Radio w/CD Player

AUTOMOTIVE

- Ford® Chassis w/6.8L Triton V10 Engine
- Workhorse™ Chassis 8.1L Vortec™ V8 Engine
- CSA Package**

FLEETWOOD ADVANTAGES

- Best in Class Styling, Graphics and Decors
- Best in Class Floor Plans, Including Full-Wall Slide and Mid-Coach Home Theater
- Best in Class Components and Appliances
- Power Platform® Construction (Fleetwood Exclusive)

** CSA standards may require substitution or deletion to achieve conformance.

WEIGHTS AND MEASUREMENTS

FORD® / WORKHORSE™ CHASSIS

MODELS	35A	36D	37C	38P
Engine Displacement (Liters)	6.8/8.1	6.8/8.1	6.8/8.1	6.8/8.1
Wheelbase (Inches)	228"	228"	242"	242"
GVWR (lbs) ¹	22,000/24,000	22,000/24,000	24,000	24,000
Front GAWR (lbs) ²	7,500/9,000	7,500/9,000	9,000	9,000
Rear GAWR (lbs) ²	14,500/15,500	14,500/15,500	15,500	15,500
GCWR (lbs) ³	26,000/30,000	26,000/30,000	30,000	30,000
Hitch Rating Weight (lbs) ¹	5,000/6,000	5,000/6,000	6,000	6,000
Tongue Weight (lbs) ¹	500/600	500/600	600	600
Fuel Capacity (gal)	75	75	75	75

DIMENSIONS & CAPACITIES

MODELS	35A	36D	37C	38P
Overall Length ⁴	36' 2"	36' 2"	37' 8"	38' 8"
Overall Height (with A/C)	12' 10"	12' 10"	12' 10"	12' 10"
Overall Width (maximum) ^{5, 6}	102"	102"	102"	102"
Interior Height (maximum)	84"	84"	84"	84"
Interior Width (maximum)	96"	96"	96"	96"
Fresh Water Holding Tank (gal)	80	80	80	80
Grey Water Holding Tank (gal)	58	58	58	58
Black Water Holding Tank (gal)	42	42	42	42
Appliance Propane Tank (gal) (WC) ⁷	25	25	25	25
Water Heater Tank (gal)	10	10	10	10

Liquid Weight Reference: Water (gal) = (8.3 lbs/3.8 kgs) Fuel (gal) = (6.1 lbs/2.8 kgs) Propane (gal) = (4.2 lbs/1.9 kgs)
Metric Conversion: Multiply pounds x 0.453 to obtain kilograms. Multiply gallons x 3.785 to obtain liters. Multiply liters x 61 to obtain cubic inches.

- GVWR (Gross Vehicle Weight Rating) is the maximum permissible weight of this fully loaded motor home. The GVWR is equal to or greater than the sum of the (UVW) unloaded vehicle weight plus the (OCCC) occupant cargo carrying capacity*.
- GAWR (Gross Axle Weight Rating) is the maximum permissible loaded weight a specific axle is designed to carry.
- GCWR (Gross Combined Weight Rating) is the value specified by the motor home manufacturer as the maximum allowable loaded weight of this motor home with its towed vehicle. Towing and braking capacities may be different. Refer to Fleetwood and chassis manufacturer's manuals for complete information.
- Length measured from front bumper to rear bumper (excludes accessories).
- Excludes safety equipment and awnings.
- Motor homes feature a body-width over 96" which will restrict your access to certain roads. Before purchasing, you should research any state and/or province road laws which may affect your usage.
- Tank manufacturer's listed water capacity (WC). Actual propane capacity is 80% of water listing as required by the safety code.

CHASSIS

Model: Ford® / Workhorse™

Engine: 6.8L Triton V10/8.1L Vortec™ V8

Transmission: Ford®, 5-Speed Automatic w/Overdrive
Workhorse™, 6-Speed Automatic w/Overdrive

Alternator: 130 Amp/145 Amp

Torque: 457 lb-ft @ 3250 RPM/455 lb-ft @ 3200 RPM

Horsepower: 362HP/340HP

Warranty



Exclusive RV ownercare warranty.
See your Fleetwood dealer for details.

Pace Arrow

CLASS A GAS

- The chassis manufacturer recommends the installation of a supplemental brake control system to activate the brakes on the vehicle or trailer you are towing. Hitch receiver ratings expressed are maximum for the hitch receiver installed and may require the purchase of additional equipment that is dependent on the weight of the towed load. Consult with hitch receiver manufacturer for further information.

N/A = not available at time of printing.

* UVW and OCCC are found on the label containing the federal certification tag in each RV.

IMPORTANT — PLEASE READ: Product information, photography and illustrations included in this publication were as accurate as possible at the time of printing. For further product information and changes, please visit our website at www.fleetwoodrv.com or contact your local Fleetwood dealer. Prices, materials, design and specifications are subject to change without notice. All weights, fuel, liquid capacities and dimensions are approximate. Fleetwood has designed its recreational vehicles to provide a variety of uses for its customers. Each vehicle features optimal seating, sleeping, storage and fluid capacities. The user is responsible for selecting the proper combination of loads (i.e. occupants, equipment, fluids, cargo, etc.) to ensure that the vehicle's capacities are not exceeded.



RV OWNERCARE*

Limited one-year/15,000-mile coach warranty and three-year/50,000-mile structural warranty, whichever occurs first, and it is fully transferable for the first 12 months. RV OWNERCARE is one of the RV industry's most comprehensive programs and includes systems, appliances, components and construction, with no deductible and no service charge. RV OWNERCARE coverage is provided from a company that will be around in the future to service your needs. See your nearest Fleetwood dealer for a full explanation of benefits and restrictions.

CONTACT US

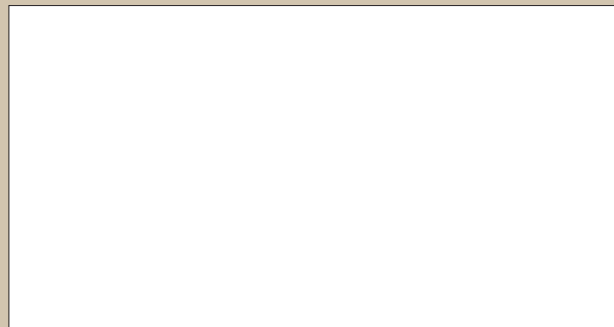
To locate a dealer near you, visit our website at www.fleetwoodrv.com or call 1-800-444-4905. We can also be contacted at Fleetwood Customer Relations, P.O. Box 1007, Decatur, IN 46733.

FLEETWOOD MOTOR HOME CLUBS

As a Fleetwood owner, you're invited to become a member of several Fleetwood motor home clubs. Becoming a club member is the perfect way to meet other Fleetwood owners who love to travel across America and share in the RV lifestyle. Visit our website at www.fleetwoodrv.com/owners_clubs to learn more and join the fun.



YOUR LOCAL FLEETWOOD DEALER IS:



*For complete info see your Fleetwood dealer.

©2008. Fleetwood Enterprises, Inc.
Printed in the USA. Inventory Control Number PA09B1, 08/08.
Model Year 2009, First Edition.

IMPORTANT—PLEASE READ

Product information, photography and illustrations included in this publication were as accurate as possible at the time of printing. For further product information and changes, please visit our website at www.fleetwoodrv.com or contact your local Fleetwood dealer. Prices, materials, design and specifications are subject to change without notice. All weights, fuel, liquid capacities and dimensions are approximate. Fleetwood has designed its recreational vehicles to provide a variety of uses for customers. Each vehicle features optimal seating, sleeping, storage and fluid capacities. The user is responsible for selecting the proper combination of loads (i.e. occupants, equipment, fluids, cargo, etc.) to ensure that the vehicles capacities are not exceeded.

WHY FLEETWOOD?



Quality

There's no cutting corners. Skilled craftsmen build every Fleetwood RV for maximum durability and longevity.



Trust

More people trust Fleetwood. After all, we've spent over 50 years perfecting RVs, earning the loyalty of generations of RVers.



Passion

We're truly passionate about the RV lifestyle. Fleetwood was founded by RV enthusiasts, and that tradition continues today.



Safety

You've got precious cargo. So we've engineered dozens of innovative safety features into our motor homes to give you more peace of mind.



Service

Help is nearby. When you need an upgrade or repair, you'll find Fleetwood dealers all across North America ready to assist you.



Warranty

Exclusive RV ownercare warranty. See your Fleetwood dealer for details.

