



[TRAVEL TRAILERS AND FIFTH WHEELS]

Terry Resort and Terry



**IT'S THAT FEELING A PUPPY GETS
WHEN SOMEBODY ACCIDENTALLY
LEAVES THE GATE OPEN.**

Smooth Fiberglass Walls (Terry) | Functional Floor Plans | Appealing Décors | Superior Construction | Name Brand Components



The Pantry holds snacks, cereal and more on adjustable shelves. That means you can pack enough food to feed your family, and the friends the kids bring over.



The Galley is equipped with trusted brand name appliances you can depend on. Like the big Dometic® double-door refrigerator, the Magic Chef® 3-burner stove with oven and the Atwood® water heater.



The Entertainment Center with available LCD TV and DVD Player lets you put on a movie when the kids need downtime. (Or you need a break from entertaining them.)

FEEL FREE TO WANDER THROUGH THE MEADOW, SMELL THE WILDFLOWERS AND EXPLORE TO YOUR HEART'S CONTENT. TERRY IS WAITING.

The Living Room/Dinette Area is contemporary and elegant, a far cry from old-school camping styles. And the appealing décor is durable, too – we furnished Terry with superior Flexsteel® furniture with a lifetime warranty on the frame.

Terry 250RLS shown in Willow Bend interior décor with Clear Oak wood finish.



The Sofa Bed is the place everybody wants to lounge. At night, it folds down into a bed for two – perfect for a boy and his beloved dog.





The Shirt Ward/TV Stand gives you a place to hang your shirts, while you hang out and watch a little TV. (TV not included.)



The Master Bedroom feels just as comfy as yours at home. After a long day on the river, you can float away on the cushy queen-size bed with innerspring mattress. The other campers can retire to the available single or double bunkhouse (Select models.)

Out in the great outdoors, you don't want to be cramped indoors. So we've designed Terry® with functional floor plans that are comfortable and livable, offering a variety of configurations to suit up to ten people. And of course, a few pets, too.

The Shower and Lavy offer the very best thing about Terry. Your personal bathroom with a toilet, sink, medicine cabinet and a hot shower is always just a step away.



The Shirt Ward and Overhead Storage holds extra clothing, campground guidebooks or camera behind its attractive glass doors.



The Bedroom Entry Door lets you sneak out to sit around the glowing embers of the campfire while the kids sleep inside (select models).





The Entry Assist Handle helps big and little campers get in and out easier. And it folds flat when you're on the road.



Pass-Through Storage (most models) is perfect for oversized items like your dog crate, lawn chairs and cooler. And it's illuminated, so you don't have to rely on the stars to get your gear at night.



Under-Dinette Storage is accessible from the inside or outside of Terry. So it's a great place for puppy food and doggie toys.

You've got stuff? We've got space. From the inside storage compartments to the pass-through storage, Terry has the room to store lots of stuff families need (or want) when camping.

TERRY RESORT™ BIG CAMPING FUN WITH A LOWER PRICE TAG.

When you want to enjoy the outdoor scenery without parting with too much green, Terry Resort is a great choice. You'll enjoy a nice array of features, and it's built with the same high quality that Fleetwood is famous for. We wouldn't put the Terry name to anything less.



Drawing is for illustrative purposes only to highlight aspects of Terry Resort construction. Actual RV design depends on model and is subject to change.

- 1. ENGINEERED RADIUSED CEILING TRUSS** – Helps to ensure strength, water runoff and reduced weight.
- 2. IN-CEILING AIR CONDITIONING DUCT** – Better distributes cool air.
- 3. R7 FIBERGLASS INSULATION** – As in your home, helps to ensure interior comfort in every season.
- 4. ONE-PIECE SEAMLESS SYNTHETIC RUBBER ROOF MEMBRANE** – Provides the ideal weather seal and is warranted for 12 years.
- 5. INTERIOR WALL PANEL** – Features a durable, easy-to-clean, decorative vinyl.
- 6. ARMSTRONG® FLOORING** – Durable, easy to clean from the best name in residential flooring.
- 7. REINFORCED CAMBERED STEEL CHASSIS** – Provides optimal strength, durability, and towing performance.
- 8. ENCLOSED CHASSIS** – Is a durable weather barrier (available).
- 9. OSB ENGINEERED ROOF SUBSTRATE** – Is designed to maximize strength, is sealed to provide moisture resistance and provides a solid backbone for the synthetic rubber roof construction.
- 10. 2" x 3" FLOOR JOIST** – Allows for the placement of in-floor furnace ducting without compromising structural integrity.
- 11. ENGINEERED 5/8" OSB FLOORING** – Provides the dependable decking needed to ensure an adequate foundation. Further stability is added by interlocking these sheets using "tongue and groove" construction.
- 12. 2" x 2" SIDEWALL STUDS 16" ON CENTER** – Utilizing residential framing methods, this is the structural component of our sidewall construction.
- 13. .024" ALUMINUM SIDING** – Complete with a baked-on enamel paint, this aluminum siding offers rigidity while still being affordable.

Exterior Graphics Package offers clean, bold styling and still looks like a million bucks even after lots of long weekends.



FIBERGLASS CONSTRUCTION SETS TERRY APART.

Competitors just can't match the quality of Terry's construction. Terry is built with strong, aluminum-framed, laminated fiberglass exterior sidewalls. Not usually found at this price, they provide insulation and rigidity. The quality continues inside, where we use solid hardwood cabinet doors, and seamless vinyl flooring covering the entire floor (not just the parts you can see). This attention to detail creates superior construction, a polished look and an unbeatable value for the money.



Drawing is for illustrative purposes only to highlight aspects of Terry construction. Actual RV design depends on model and is subject to change.

Cube Speakers in the living room give your camping trip a soundtrack. They're connected to the standard AM/FM/CD stereo and available DVD and MP3 compatible player.

The Enclosed Chassis is standard on Terry and available on Resort. No need to migrate to warmer climates. The enclosed chassis allows heating the holding tanks to help prevent freezing in colder weather.



1. **ENGINEERED RADIUSED CEILING TRUSS** – Helps to ensure strength, water runoff and reduced weight.
2. **IN-CEILING AIR CONDITIONING DUCT** – Better distributes cool air.
3. **R7 FIBERGLASS INSULATION** – As in your home, helps to ensure interior comfort in every season.
4. **ONE-PIECE SEAMLESS SYNTHETIC RUBBER ROOF MEMBRANE** – Provides the ideal weather seal and is warranted for 12 years.
5. **INTERIOR WALL PANEL** – Features a durable, easy-to-clean, decorative vinyl.
6. **ARMSTRONG® FLOORING** – Durable, easy to clean from the best name in residential flooring.
7. **REINFORCED CAMBERED STEEL CHASSIS** – Provides optimal strength, durability, and towing performance.
8. **1 1/2" ALUMINUM TUBING** – Lightweight, structural studs blend proven framing methods with technologically superior materials.
9. **HIGH-DENSITY BLOCK FOAM INSULATION** – Is custom cut to ensure maximum structure and insulation value.
10. **SMOOTH GLOSS FIBERGLASS EXTERIOR SIDING** – This glossy surface is easy-to-clean and adds beauty and structural integrity.
11. **WOOD SUBSTRATE** – Adds structural reinforcement to the exterior fiberglass panel.
12. **ENCLOSED CHASSIS** – Is a durable weather barrier.
13. **OSB ENGINEERED ROOF SUBSTRATE** – Is designed to maximize strength, is sealed to provide moisture resistance and provides a solid backbone for the synthetic rubber roof construction.
14. **2" x 3" FLOOR JOIST** – Allows for the placement of in-floor furnace ducting without compromising structural integrity.
15. **ENGINEERED 5/8" OSB FLOORING** – Provides the dependable decking needed to ensure an adequate foundation. Further stability is added by interlocking these sheets using "tongue and groove" construction.
16. **2" x 2" STUDS 16" ON CENTER (FRONT AND REAR SECTION)** – Utilizing residential framing methods, this is the structural component of our front and rear construction.
17. **AVAILABLE MOLDED FRONT CAP** – Improved aerodynamics and styling.



No matter what direction you go, you'll always have your sense of style. Terry has a polished, contemporary look that's been created by professional interior designers. Who says camping can't be elegant and fun?

INTERIOR DÉCOR CHOICES

A DINETTE CUSHIONS
SOFA (EXCLUDES
BLUE MIST &
WILLOW BEND DÉCORS
IN RESORT)

B SOFA (APPLIES TO
BLUE MIST & WILLOW
BEND DÉCORS IN RESORT)
LIVING ROOM WINDOW
TREATMENTS

C BEDSPREAD
HEADBOARD
PILLOW SHAMS

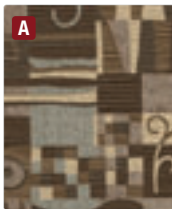
D BEDSPREAD
WINDOW TREATMENTS



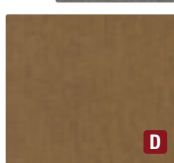
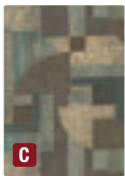
CLEAR OAK

BLUE MIST

LIVING ROOM



BEDROOM

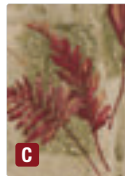


WILLOW BEND

LIVING ROOM

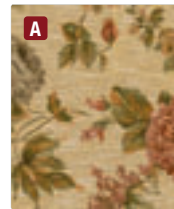


BEDROOM

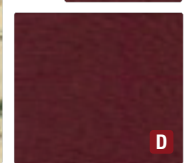
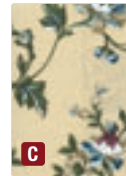


ROSE PETAL

LIVING ROOM

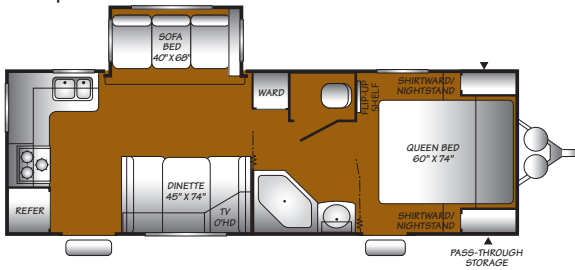


BEDROOM

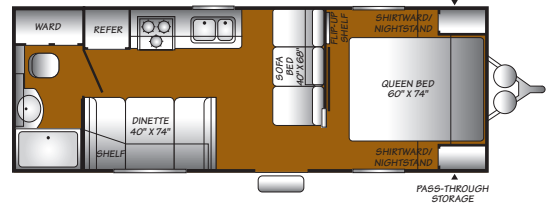


TERRY RESORT TRAVEL TRAILER FLOOR PLANS

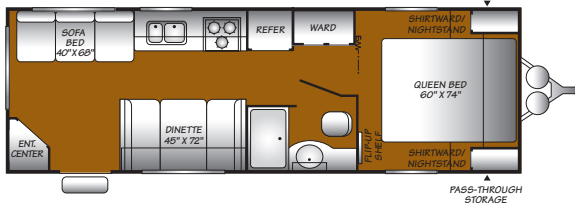
240RKS
Single Slide-Out
Sleeps 6*



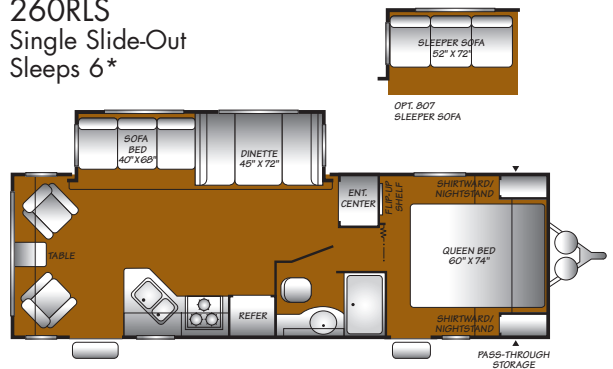
250FQ
Sleeps 6*



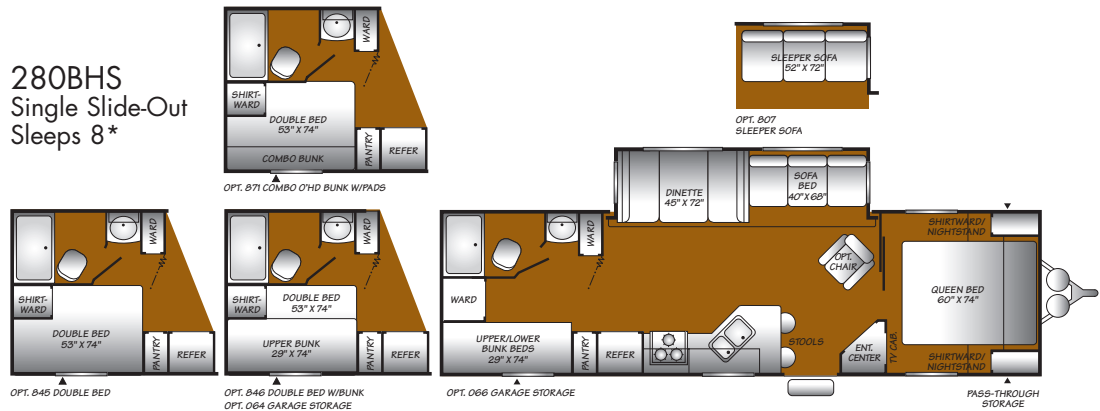
240RL
Sleeps 6*



260RLS
Single Slide-Out
Sleeps 6*



280BHS
Single Slide-Out
Sleeps 8*



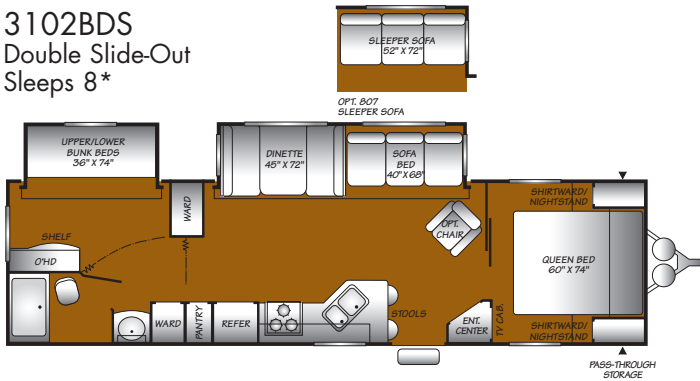
▲ = Exterior Storage

*Sleeping capacity is a variable number and is affected by items such as size of occupant, options and floor plan. Some models are not available in all areas of the country. Please see your local dealer for model availability.

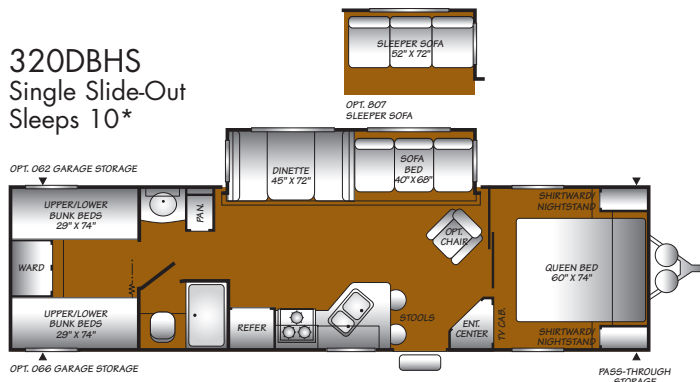
TERRY RESORT TRAVEL TRAILER FLOOR PLANS

TERRY RESORT FIFTH WHEEL FLOOR PLANS

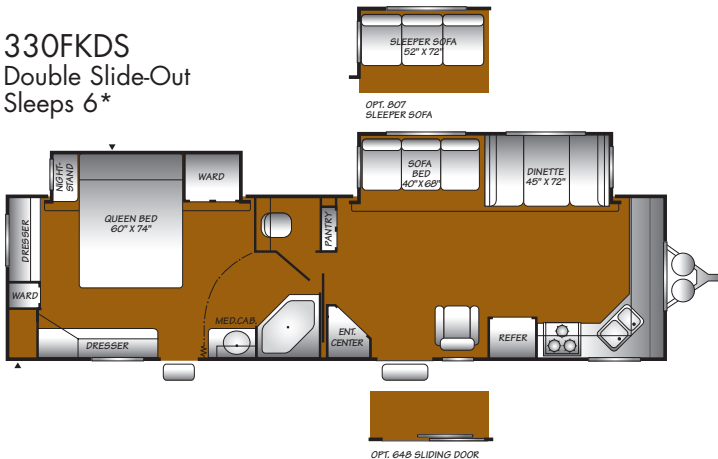
3102BDS
Double Slide-Out
Sleeps 8*



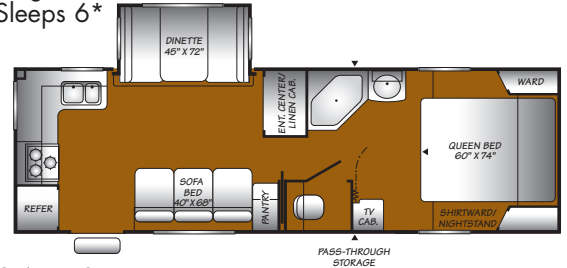
320DBHS
Single Slide-Out
Sleeps 10*



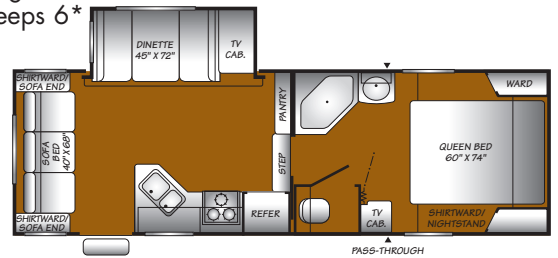
330FKDS
Double Slide-Out
Sleeps 6*



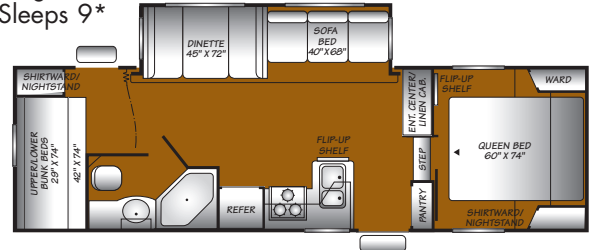
245RKS
Single Slide-Out
Sleeps 6*



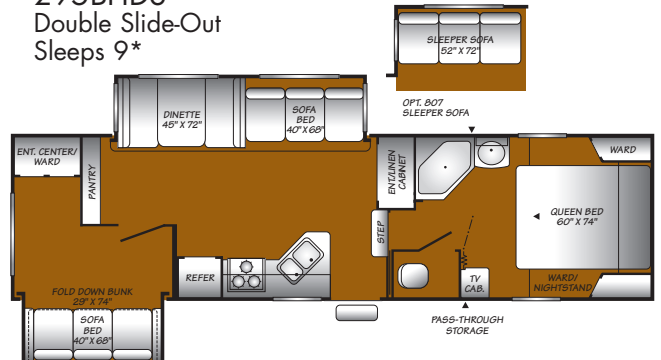
245RLS
Single Slide-Out
Sleeps 6*



2652BS
Single Slide-Out
Sleeps 9*

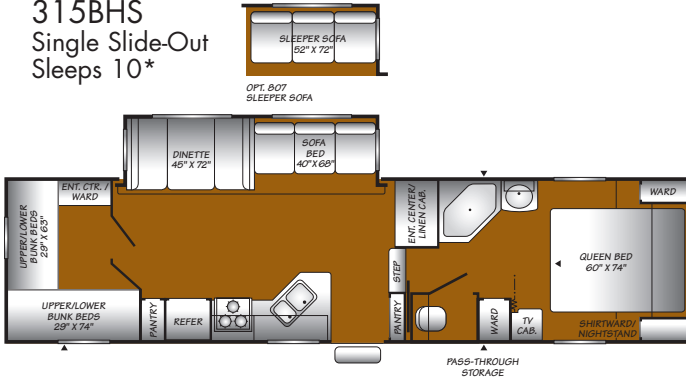


295BHDS
Double Slide-Out
Sleeps 9*

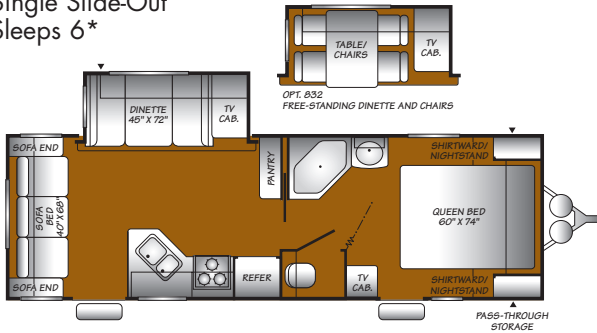


TERRY TRAVEL TRAILER FLOOR PLANS

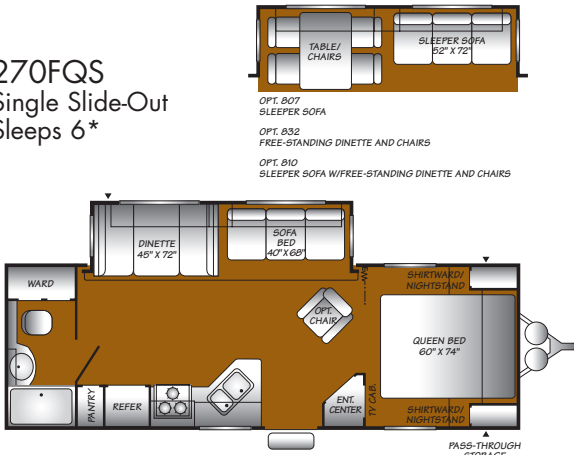
315BHS
Single Slide-Out
Sleeps 10*



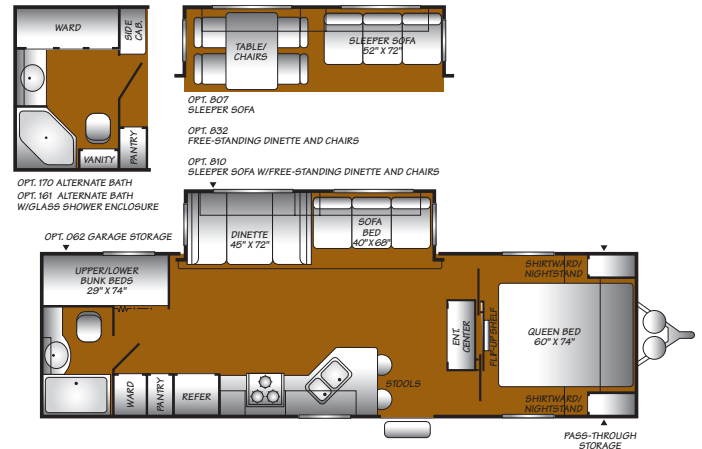
250RLS
Single Slide-Out
Sleeps 6*



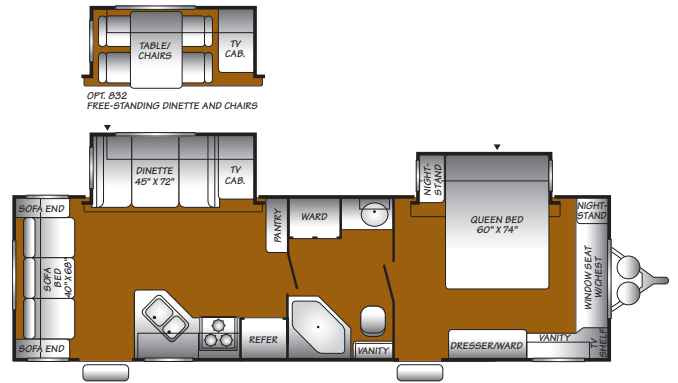
270FQS
Single Slide-Out
Sleeps 6*



280FQS
Single Slide-Out
Sleeps 8*



280RLDS
Double Slide-Out
Sleeps 6*

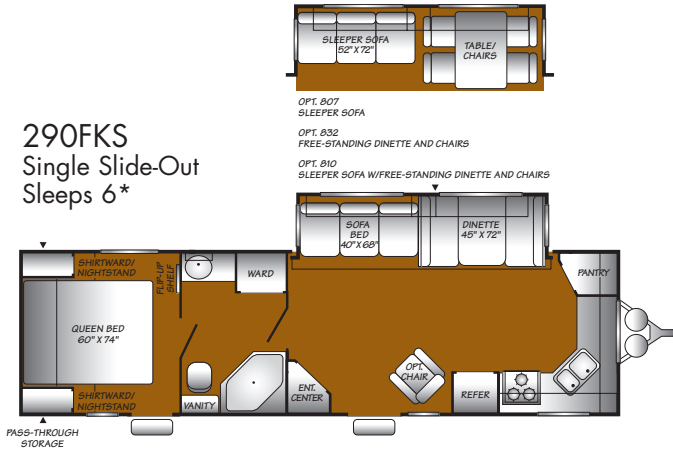


*Sleeping capacity is a variable number and is affected by items such as size of occupant, options and floor plan. Some models are not available in all areas of the country. Please see your local dealer for model availability.

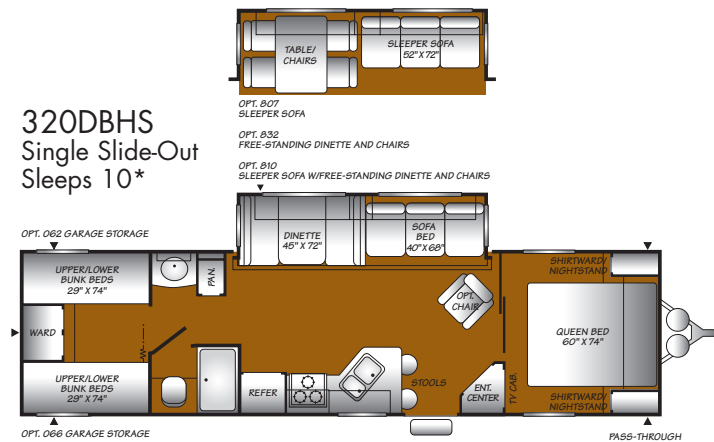
▲ = Exterior Storage

TERRY TRAVEL TRAILER FLOOR PLANS

290FKS
Single Slide-Out
Sleeps 6*



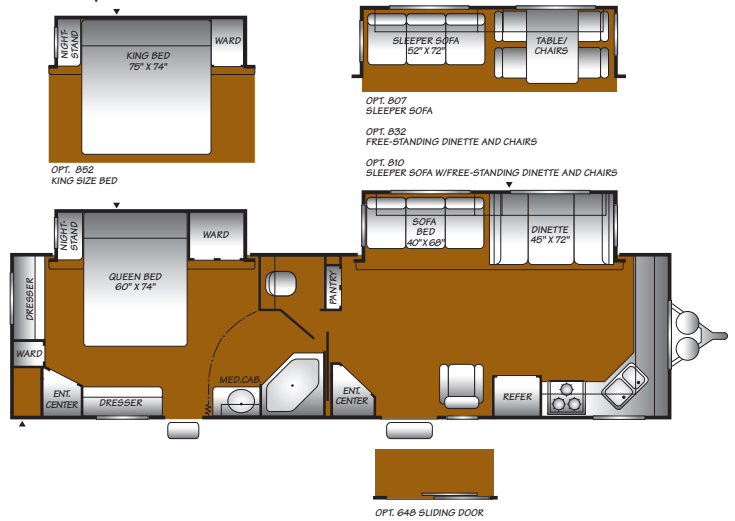
320DBHS
Single Slide-Out
Sleeps 10*



*Sleeping capacity is a variable number and is affected by items such as size of occupant, options and floor plan. Some models are not available in all areas of the country. Please see your local dealer for model availability.

▲ = Exterior Storage

330FKDS
Double Slide-Out
Sleeps 6*

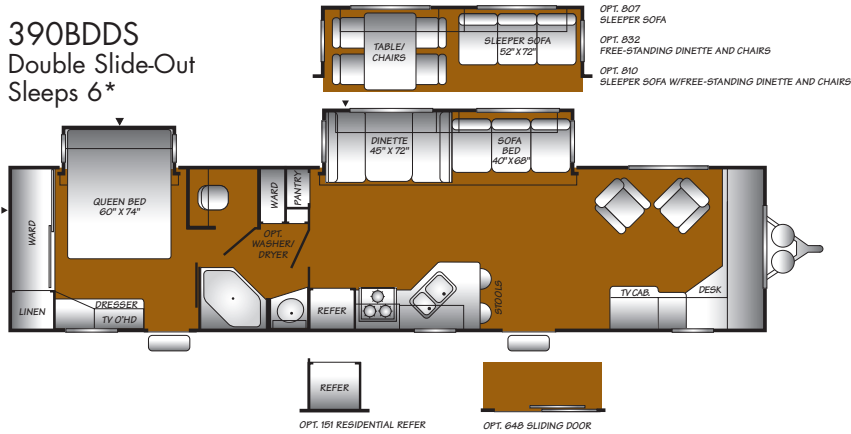


3902BDS
Double Slide-Out
Sleeps 8*

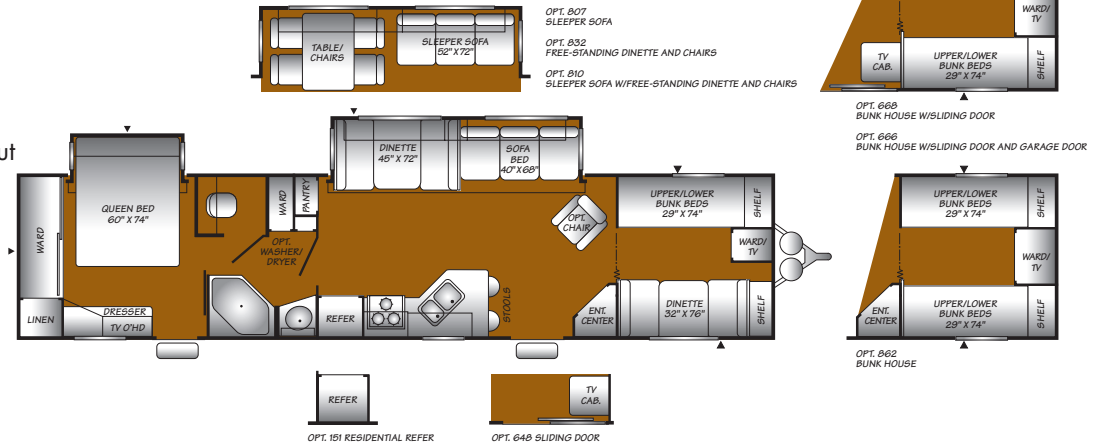


TERRY TRAVEL TRAILER FLOOR PLANS

390BDDS
Double Slide-Out
Sleeps 6*

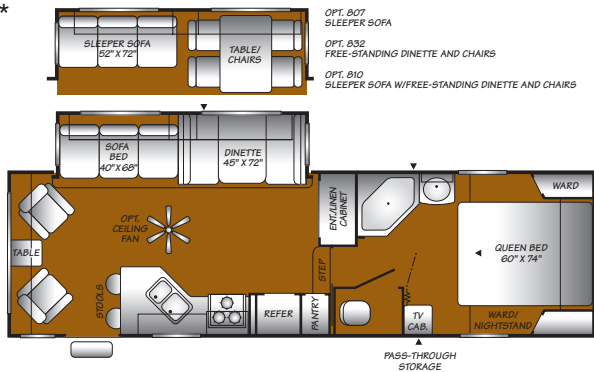


390BHDS
Double Slide-Out
Sleeps 10*

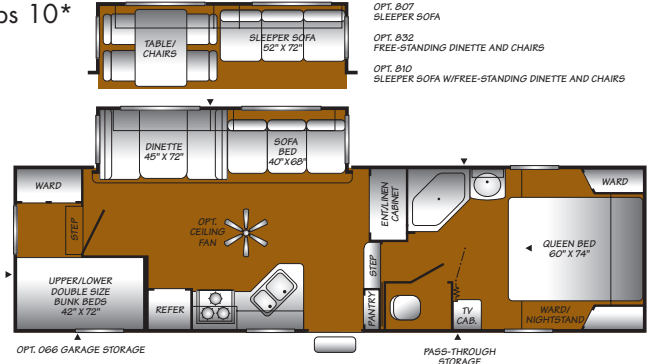


TERRY FIFTH WHEEL FLOOR PLANS

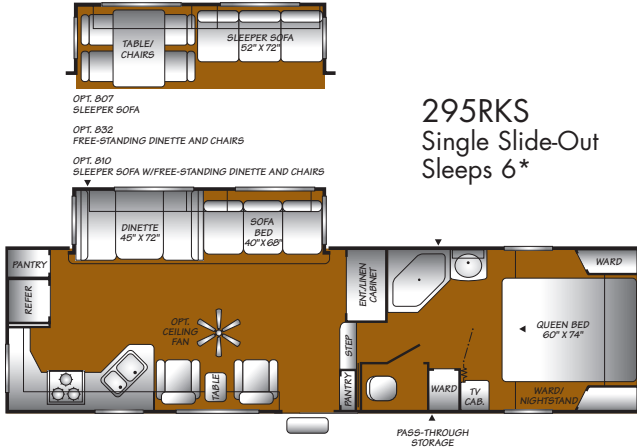
285RLS
Single Slide-Out
Sleeps 6*



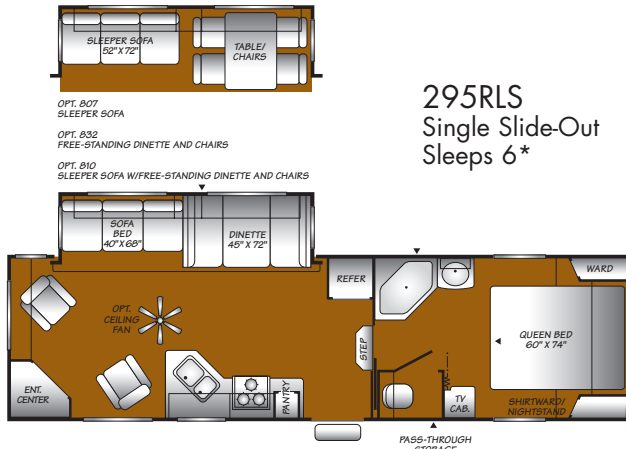
2952BS
Single Slide-Out
Sleeps 10*



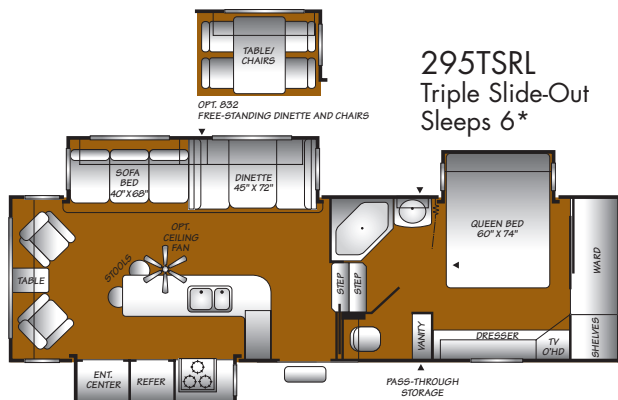
TERRY FIFTH WHEEL FLOOR PLANS



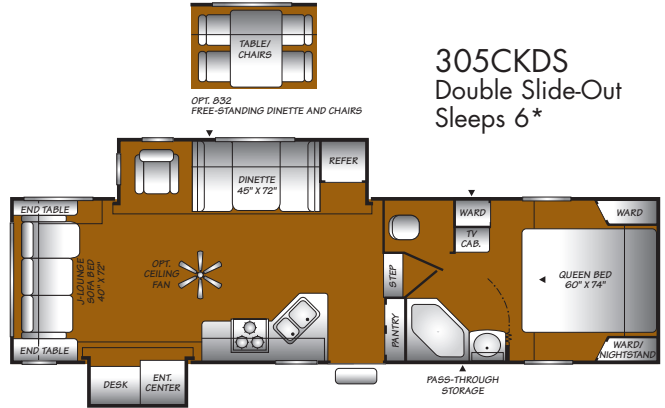
295RKS
Single Slide-Out
Sleeps 6*



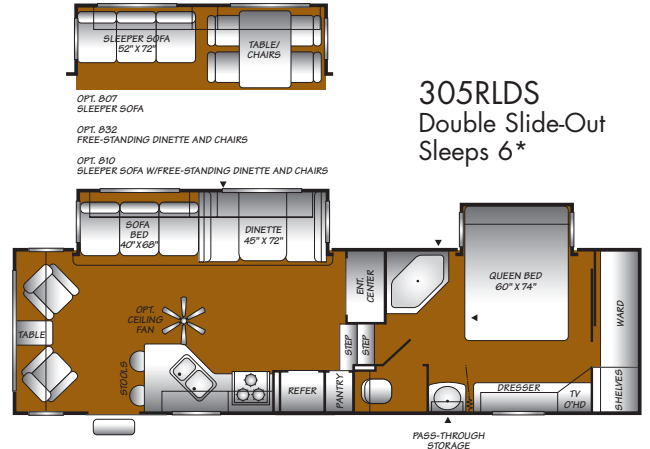
295RLS
Single Slide-Out
Sleeps 6*



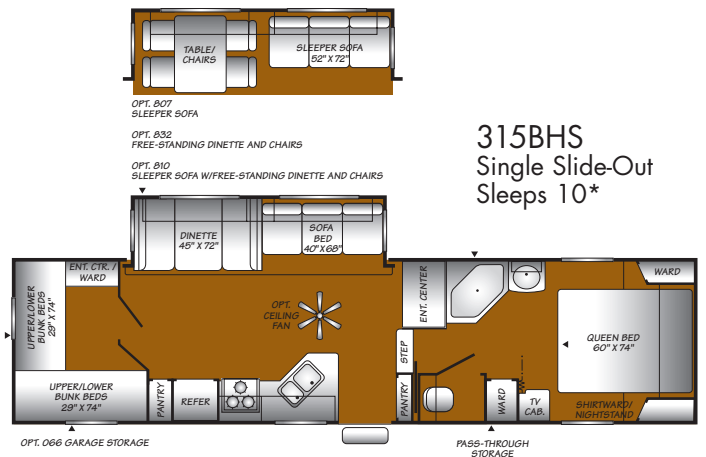
295TSRL
Triple Slide-Out
Sleeps 6*



305CKDS
Double Slide-Out
Sleeps 6*



305RLDS
Double Slide-Out
Sleeps 6*



315BHS
Single Slide-Out
Sleeps 10*

*Sleeping capacity is a variable number and is affected by items such as size of occupant, options and floor plan. Some models are not available in all areas of the country. Please see your local dealer for model availability. ▲ = Exterior Storage

TERRY RESORT AND TERRY - FEATURES

| | RESORT TERRY | | RESORT TERRY | | RESORT TERRY | | RESORT TERRY |
|--|-----------------|--|-----------------|--|-----------------|---|-----------------|
| INTERIOR | | | | | | | |
| • Raised 6 Panel Lavy Door | S S | • Magic Chef® 3-Burner (1-High- Output) 22" Range w/Oven | S S | • Propane Detector/Alarm | S S | STORAGE | |
| • AM/FM Stereo/CD Player w/6 Surround Sound Ceiling Mount Speakers, (4) Living Room, (2) Bedroom, & Sub Woofer | S | • Metal Hi-Rise Faucet | S S | • Smoke Detector/Alarm | S S | • Finished Luggage Door Openings | S S |
| • AM/FM Stereo/CD Player w/2 Living Room Ceiling Mount Recessed Speakers | S | • Pantry w/Adjustable Shelves | S S | EXTERIOR | | • Locking Lined Luggage Compartments w/Lights | S S |
| • AM/FM Stereo/CD with DVD & MP3 Player, 6 Surround Sound Ceiling Mount Speakers, (4) Living Room, (2) Bedroom, & Sub Woofer | O | • Pots & Pans Drawer | S S | • 120V Patio Receptacle | S S | • Radius Luggage Doors | S S |
| • AM/FM Stereo/CD with DVD & MP3 Player, 6 Surround Sound Ceiling Mount Speakers, (4) Living Room, (2) Bedroom, & Sub Woofer | O | • Range Hood w/12V Light & Exhaust Fan | S S | • Dual 30 lb. Propane Cylinders w/Regulator & Auto-Changeover | S S | • Exterior Garage Storage (Select Models) | O O |
| • Decorative Wall Mirrors | S | • Residential Height Countertops | S S | • Extended Pin Box & Power Landing Gear (5th Wheels) | S S | INTERIOR VALUE PACKAGE | O O |
| • HydroFlame Forced Air, Direct Spark Ignition Furnace w/Thermostat | S S | • Sink Cover/Cutting Board | S S | • Front & Rear Colored Skirt End Caps | S | • 13,500 BTU Air Conditioner | X |
| • Oversized Light Switches | S S | • Spice Rack | S S | • Hitch Light | S S | • 3 Bulb Vanity Light | X |
| • Phone Jack & Satellite Ready | S | • Toe Kick | S S | • Laminated Sidewalls | S | • 6-Gallon Propane DSI (Direct Spark Ignition) Water Heater | X X |
| • Slide-Out End Windows | S S | • Upgraded Vinyl Flooring | S S | • Molded Wheel Well Skirts (Color Coordinated to Match Radius Skirt) | S S | • ABS Tub/Shower Walls | X |
| • Solid State Converter w/Built-In Battery Charger | S S | BEDROOM | | • Phone & Satellite Jacks | S | • Additional Sink Cover | X |
| • 6 Gal. Propane/110V DSI (Direct Spark Ignition) Water Heater | O O | • 350 lb. Fixed Bunk Weight Rating (150 lb. Weight Rating for Combo Bunks) | S S | • Quick Drain Holding Tank (Fresh Water) | S S | • Cable TV Hook-Up | X X |
| • Water Heater Bypass | S S | • Angled Front Bedroom Cabinetry (Mid Profile 5th Wheels) | S S | • Radius Truss Roof Rafters | S S | • Microwave w/Electronic Touch Pad | X X |
| • 13,500 BTU Air Conditioner | O S | • Innerspring Mattress | S S | • Split Tank Propane System (5th Wheels) | S S | • Mortise & Tenon Cathedral Arch Flat Panel Cabinet Doors | X |
| • Free Standing Chair (Most Models) | O S | • Lift-Up Bed Platform w/Below Bed Storage (Most Models) | S S | • Welded, Dual Battery Rack (Travel Trailer Models Only) | S S | • Mortise & Tenon Cathedral Arch Raised Panel Cabinet Doors | X |
| • Flat Panel Refrigerator Insert (3 Panel) | O | • Miniblinds Throughout (Except Bunk Windows) | S S | • Fiberglass Exterior Sidewalls | O S | • Range Cover | X X |
| • Raised Panel Refrigerator Insert (6 Panel) | O | • Wardrobes Accommodate Residential Size Clothes Hangers | S S | • Adjustable Hitch Coupler | O O | • Swivel Reading Lights in Bedroom | X |
| • Slide-Out Enhancement Package (Sofa Overhead Cabinets & Large Dinetette Window) | S | • Bedroom Carpet (Most Models) | O S | • Exterior Shower | O O | • Water Purifier | X |
| GALLEY | | • Living Room Carpet (Most Models) | O O | • Roof Ladder | O O | • Porcelain Toilet | X |
| • 12V Dinette Décor Light (Slide-Out Models) | S S | • Upgraded Mattress | O O | • Spare Tire w/Cover | O O | • Porcelain Toilet w/ Sprayer | X |
| • 4 Galley Drawers (Most Models) | S S | BATHROOM | | • Black Tank Flush System | O | EXTERIOR VALUE PACKAGE | O O |
| • 60/40 Sink | S S | • 12V Power Exhaust Roof Vent | S S | • Enclosed Chassis | O S | • 5th Wheel Power Landing Gear | X X |
| • Deluxe Full Extension Roller Bearing Drawer Guides | S | • Medicine Cabinet w/Mirrored Door | S S | • Extreme Edition Package (Extra Insulation in Floor & Ceiling w/Astrofoil in Slide Floor & Around Holding Tanks) | O O | • Double Thickness Insulation | X |
| • Dometic® Double Door Propane/Electric Refrigerator | S S | • Removable Wire Basket (Most Models) | S | BODY STRUCTURE | | • Fiberglass Exterior | X |
| | | • ABS Tub/Shower Enclosure | S S | • Cambered Chassis | S S | • Enclosed Chassis | X |
| | | • Wall-Switched Ceiling Light | S S | • I-Beam Main Rails | S S | • Heated & Enclosed Holding & Water Tanks | X |
| | | • Bathroom Skylight | O O | • One-Piece Seamless Roof | S S | • Enclosed and Heated Water Tank Compartment | X |
| | | SAFETY/CONVENIENCE | | SAFETY/CONVENIENCE | | • Laminated Walls | X |
| | | • Carbon Monoxide Detector/Alarm | S S | • 120V GFI Circuit Protection (Galley/Bath/Patio) | S S | • Lend-a-Hand Assist Handle | X |
| | | • Entry Assist Handle | S S | • 4-Wheel Electric Brakes | S S | • Mud Flaps | X |
| | | • Fire Extinguisher | S S | • Break-Away Emergency Disconnect Brake | S S | • Patio Awning | X X |
| | | | | • Wall Mounted Systems Monitor Panel | S S | • Protected Copper Lines | X |
| | | | | | | • Security Light | X |
| | | | | | | • Stabilizer Jacks (Slide-Out Models) | X X |
| | | | | | | • Tinted Safety Glass Windows | X X |
| | | | | | | • TV Antenna | X X |

S = Standard

O = Optional

TERRY RESORT WEIGHTS AND MEASUREMENTS

| TRAVEL TRAILERS | 240RKS | 240RL | 250FQ | 260RLS |
|--|---------------|---------------|---------------|---------------|
| WEIGHTS | | | | |
| GVWR (lbs) ¹ | 7,500 | 6,700 | 6,500 | 8,600 |
| Gross Dry Weight (lbs) ^{2, 6} | 5,455 | 4,698 | 4,401 | 5,981 |
| Cargo Carrying Capacity (lbs) ^{3, 6} | 2,045 | 2,002 | 2,099 | 2,619 |
| Hitch Dry Weight (lbs) ^{2, 6, 9} | 750 | 604 | 577 | 828 |
| DIMENSIONS & CAPACITIES | | | | |
| Length (Feet & Inches) ^{4, 6, 8} | 27' 9" | 27' 11" | 25' 11" | 29' 0" |
| Height (Feet & Inches) ^{5, 6} | 10' 1" | 9' 11" | 9' 11" | 10' 2" |
| Fresh Water Holding Tank (gal) ^{6, 7} | 50 | 50 | 50 | 50 |
| Grey Water Holding Tank (gal) ^{6, 7} | 40 | 40 | 40 | 40 |
| Black Water Holding Tank (gal) ^{6, 7} | 40 | 40 | 40 | 40 |
| Propane Capacity (lbs) ^{6, 7} | 60 | 60 | 60 | 60 |
| Tire Size (Load Range) | ST205/75R 14C | ST205/75R 14C | ST205/75R 14C | ST225/75R 15C |

| TRAVEL TRAILERS | 280BHS | 3102BDS | 320DBHS | 330FKDS |
|--|---------------|---------------|---------------|---------------|
| WEIGHTS | | | | |
| GVWR (lbs) ¹ | 9,000 | 9,950 | 9,600 | 10,700 |
| Gross Dry Weight (lbs) ^{2, 6} | 5,834 | 7,013 | 6,408 | N/A |
| Cargo Carrying Capacity (lbs) ^{3, 6} | 3,166 | 2,937 | 3,192 | N/A |
| Hitch Dry Weight (lbs) ^{2, 6, 9} | 813 | 741 | 882 | N/A |
| DIMENSIONS & CAPACITIES | | | | |
| Length (Feet & Inches) ^{4, 6, 8} | 32' 0" | 33' 11" | 33' 11" | 34' 10" |
| Height (Feet & Inches) ^{5, 6} | 10' 2" | 10' 4" | 10' 2" | 10' 4" |
| Fresh Water Holding Tank (gal) ^{6, 7} | 50 | 50 | 50 | 50 |
| Grey Water Holding Tank (gal) ^{6, 7} | 40 | 40 | 40 | 40/21 |
| Black Water Holding Tank (gal) ^{6, 7} | 40 | 40 | 40 | 40 |
| Propane Capacity (lbs) ^{6, 7} | 60 | 60 | 60 | 60 |
| Tire Size (Load Range) | ST225/75R 15C | ST225/75R 15D | ST225/75R 15D | ST225/75R 15D |

| FIFTH WHEEL | 245RKS | 245RLS | 2652BS | 295BHDS | 315BHS |
|--|---------------|---------------|---------------|---------------|---------------|
| WEIGHTS | | | | | |
| GVWR (lbs) ¹ | 9,700 | 9,500 | 9,950 | 11,300 | 11,700 |
| Gross Dry Weight (lbs) ^{2, 6} | 6,760 | 6,557 | 6,914 | N/A | N/A |
| Cargo Carrying Capacity (lbs) ^{3, 6} | 2,940 | 2,943 | 3,036 | N/A | N/A |
| Hitch Dry Weight (lbs) ^{2, 6, 9} | 1,247 | 1,116 | 1,530 | N/A | N/A |
| DIMENSIONS & CAPACITIES | | | | | |
| Length (Feet & Inches) ^{4, 6, 8} | 28' 2" | 27' 7" | 29' 8" | 33' 0" | 34' 11" |
| Height (Feet & Inches) ^{5, 6} | 11' 8" | 11' 8" | 11' 8" | 11' 10" | 11' 9" |
| Fresh Water Holding Tank (gal) ^{6, 7} | 50 | 40 | 50 | 40 | 50 |
| Grey Water Holding Tank (gal) ^{6, 7} | 40 | 40/21 | 40 | 40/40 | 40/40 |
| Black Water Holding Tank (gal) ^{6, 7} | 40 | 40 | 40 | 40 | 40 |
| Propane Capacity (lbs) ^{6, 7} | 60 | 60 | 60 | 60 | 60 |
| Tire Size (Load Range) | ST225/75R 15C | ST225/75R 15C | ST225/75R 15C | ST225/75R 15D | ST225/75R 15D |

1. GVWR (Gross Vehicle Weight Rating) is the maximum permissible weight of this trailer when fully loaded. It includes all weight at the trailer axle(s) and tongue or pin.

2. All dry weights are based on the standard model and do not include optional features or equipment.

3. Cargo Carrying Capacity (CCC) is determined by subtracting Gross Dry Weight from GVWR. Cargo Carrying Capacity (CCC) includes all fluids, optional features, equipment, and personal cargo.

4. Length taken from hitch or pin box to rear bumper (excludes accessories). Trailer length includes hitch; fifth wheel includes standard pin box.

5. Actual height may be lower, based on option offerings. Consult with your dealer to obtain actual height for the unit you are interested in.

6. Approximate.

7. Water weight equals 8.3 lbs per gallon. Propane weight equals 4.2 lbs per gallon.

8. Add 10" if equipped with optional spare tire and carrier.

9. Hitch weights are dependent upon how the trailer is equipped with options, on-board cargo and tank fluid levels. Actual hitch weights may be higher or lower than shown. It is recommended that the tow vehicle and hitch for your trailer have sufficient capacity to accommodate actual usage.

N/A = Not available at the time of printing.

* = Estimated weights

IMPORTANT—PLEASE READ

Product information, photography and illustrations included in this publication were as accurate as possible at the time of printing. For further product information and changes, please visit our website at www.fleetwoodrv.com or contact your local Fleetwood dealer. Prices, materials, design and specifications are subject to change without notice. All weights, fuel, liquid capacities and dimensions are approximate. Fleetwood has designed its recreational vehicles to provide a variety of uses for customers. Each vehicle features optimal seating, sleeping, storage and fluid capacities. The user is responsible for selecting the proper combination of loads (i.e., equipment, fluids, cargo, etc.) to ensure that the vehicle's capacities are not exceeded.

| TERRY WEIGHTS AND MEASUREMENTS | | | | | | | | | | | | | | | | | |
|--|--|---------------|--|---------------|--|---------------|--|---------------|--|---------------|--|---------------|--|---------------|--|---------------|--|
| TRAVEL TRAILERS | | 250RLS | | 270FQS | | 280FQS | | 280RLDS | | 290FKS | | | | | | | |
| WEIGHTS | | | | | | | | | | | | | | | | | |
| GVWR (lbs) ¹ | | 7,900 | | 8,000 | | 9,200 | | 9,200 | | 9,200 | | | | | | | |
| Gross Dry Weight (lbs) ^{2, 6} | | 5,931 | | 6,128 | | 6,567 | | 7,235 | | 6,758 | | | | | | | |
| Cargo Carrying Capacity (lbs) ^{3, 6} | | 1,969 | | 1,872 | | 2,633 | | 1,965 | | 2,442 | | | | | | | |
| Hitch Dry Weight (lbs) ^{2, 6, 9} | | 763 | | 850 | | 805 | | 1,156 | | 943 | | | | | | | |
| DIMENSIONS & CAPACITIES | | | | | | | | | | | | | | | | | |
| Length (Feet & Inches) ^{4, 6, 8} | | 28' 11" | | 27' 10" | | 31' 10" | | 31' 10" | | 31' 11" | | | | | | | |
| Height (Feet & Inches) ^{5, 6} | | 10' 2" | | 10' 2" | | 10' 2" | | 10' 2" | | 10' 2" | | | | | | | |
| Fresh Water Holding Tank (gal) ^{6, 7} | | 50 | | 50 | | 50 | | 50 | | 50 | | | | | | | |
| Grey Water Holding Tank (gal) ^{6, 7} | | 40 | | 40 | | 40 | | 40 | | 40/21 | | | | | | | |
| Black Water Holding Tank (gal) ^{6, 7} | | 40 | | 40 | | 40 | | 40 | | 40 | | | | | | | |
| Propane Capacity (lbs) ^{6, 7} | | 60 | | 60 | | 60 | | 60 | | 60 | | | | | | | |
| Tire Size (Load Range) | | ST205/75R 15C | | ST205/75R 15C | | ST225/75R 15C | | ST225/75R 15D | | ST225/75R 15D | | | | | | | |
| TRAVEL TRAILERS | | 320DBHS | | 330FKDS | | 3902BDS | | 390BDDS | | 390BHDS | | | | | | | |
| WEIGHTS | | | | | | | | | | | | | | | | | |
| GVWR (lbs) ¹ | | 9,600 | | 10,700 | | 11,300 | | 11,300 | | 11,300 | | | | | | | |
| Gross Dry Weight (lbs) ^{2, 6} | | 7,076 | | 8,051 | | 8,679 | | 8,679 | | 8,679 | | | | | | | |
| Cargo Carrying Capacity (lbs) ^{3, 6} | | 2,524 | | 2,649 | | 2,621 | | 2,621 | | 2,621 | | | | | | | |
| Hitch Dry Weight (lbs) ^{2, 6, 9} | | 1,010 | | 1,215 | | 888 | | 888 | | 888 | | | | | | | |
| DIMENSIONS & CAPACITIES | | | | | | | | | | | | | | | | | |
| Length (Feet & Inches) ^{4, 6, 8} | | 33' 11" | | 34' 10" | | 39' 7" | | 39' 7" | | 39' 7" | | | | | | | |
| Height (Feet & Inches) ^{5, 6} | | 10' 2" | | 10' 4" | | 10' 4" | | 10' 4" | | 10' 4" | | | | | | | |
| Fresh Water Holding Tank (gal) ^{6, 7} | | 50 | | 50 | | 50 | | 50 | | 50 | | | | | | | |
| Grey Water Holding Tank (gal) ^{6, 7} | | 40 | | 40/21 | | 40 | | 40 | | 40 | | | | | | | |
| Black Water Holding Tank (gal) ^{6, 7} | | 40 | | 40 | | 40 | | 40 | | 40 | | | | | | | |
| Propane Capacity (lbs) ^{6, 7} | | 60 | | 60 | | 60 | | 60 | | 60 | | | | | | | |
| Tire Size (Load Range) | | ST225/75R 15D | | ST225/75R 15D | | ST225/75R 15D | | ST225/75R 15D | | ST225/75R 15D | | | | | | | |
| FIFTH WHEELS | | 285RLS | | 2952BS | | 295RK5 | | 295RL5 | | 295TSRL | | 305CKDS | | 305RLDS | | 315BHS | |
| WEIGHTS | | | | | | | | | | | | | | | | | |
| GVWR (lbs) ¹ | | 9,950 | | 11,300 | | 11,700 | | 11,400 | | 11,500 | | 11,000 | | 11,500 | | 11,700 | |
| Gross Dry Weight (lbs) ^{2, 6} | | 7,864 | | 8,166 | | N/A | | 8,101 | | 8,747 | | N/A | | 8,657 | | 8,527 | |
| Cargo Carrying Capacity (lbs) ^{3, 6} | | 2,086 | | 3,134 | | N/A | | 3,299 | | 2,753 | | N/A | | 2,843 | | 3,173 | |
| Hitch Dry Weight (lbs) ^{2, 6, 9} | | 1,569 | | 1,398 | | N/A | | 1,762 | | 1,918 | | N/A | | 1,608 | | 1,598 | |
| DIMENSIONS & CAPACITIES | | | | | | | | | | | | | | | | | |
| Length (Feet & Inches) ^{4, 6, 8} | | 30' 3" | | 32' 5" | | 32' 7" | | 31' 11" | | 31' 10" | | 33' 3" | | 31' 11" | | 34' 11" | |
| Height (Feet & Inches) ^{5, 6} | | 11' 8" | | 11' 9" | | 12' 0" | | 11' 9" | | 12' 7" | | 12' 0" | | 12' 5" | | 11' 10" | |
| Fresh Water Holding Tank (gal) ^{6, 7} | | 40 | | 50 | | 50 | | 50 | | 40 | | 50 | | 50 | | 50 | |
| Grey Water Holding Tank (gal) ^{6, 7} | | 40/21 | | 40/40 | | 40/40 | | 40/21 | | 40/21 | | 40/21 | | 40/21 | | 40 | |
| Black Water Holding Tank (gal) ^{6, 7} | | 40 | | 40 | | 40 | | 40 | | 40 | | 40 | | 40 | | 40 | |
| Propane Capacity (lbs) ^{6, 7} | | 60 | | 60 | | 60 | | 60 | | 60 | | 60 | | 60 | | 60 | |
| Tire Size (Load Range) | | ST225/75R 15D | | ST225/75R 15D | | ST225/75R 15D | | ST225/75R 15D | | ST225/75R 15D | | ST225/75R 15D | | ST225/75R 15D | | ST225/75R 15D | |

- GVWR (Gross Vehicle Weight Rating) is the maximum permissible weight of this trailer when fully loaded. It includes all weight at the trailer axle(s) and tongue or pin.
- All dry weights are based on the standard model and do not include optional features or equipment.
- Cargo Carrying Capacity (CCC) is determined by subtracting Gross Dry Weight from GVWR. Cargo Carrying Capacity (CCC) includes all fluids, optional features, equipment, and personal cargo.
- Length taken from hitch or pin box to rear bumper (excludes accessories). Trailer length includes hitch; fifth wheel includes standard pin box.
- Actual height may be lower, based on option offerings. Consult with your dealer to obtain actual height for the unit you are interested in.
- Approximate.
- Water weight equals 8.3 lbs per gallon. Propane weight equals 4.2 lbs per gallon.
- Add 10" if equipped with optional spare tire and carrier.
- Hitch weights are dependent upon how the trailer is equipped with options, on-board cargo and tank fluid levels. Actual hitch weights may be higher or lower than shown. It is recommended that the tow vehicle and hitch for your trailer have sufficient capacity to accommodate actual usage.

N/A = Not available at the time of printing.

* = Estimated weights

IMPORTANT—PLEASE READ
Product information, photography and illustrations included in this publication were as accurate as possible at the time of printing. For further product information and changes, please visit our website at www.fleetwoodrv.com or contact your local Fleetwood dealer. Prices, materials, design and specifications are subject to change without notice. All weights, fuel, liquid capacities and dimensions are approximate. Fleetwood has designed its recreational vehicles to provide a variety of uses for customers. Each vehicle features optimal seating, sleeping, storage and fluid capacities. The user is responsible for selecting the proper combination of loads (i.e., equipment, fluids, cargo, etc.) to ensure that the vehicle's capacities are not exceeded.

WHY TERRY?



PASSION

We're truly passionate about the RV lifestyle. Fleetwood was founded by RV enthusiasts, and that tradition continues today.



QUALITY

There's no cutting corners. Skilled craftsmen build every Fleetwood RV for maximum durability and longevity.



SERVICE

Help is nearby. When you need an upgrade or repair, you'll find facilities all across North America and more than 1,100 dealers ready to assist you.



WARRANTY

Exclusive RV Ownercare warranty. See your Fleetwood dealer for details.



TRUST

More people trust Fleetwood. After all, we've spent over 50 years perfecting RVs, earning the loyalty of generations of RVers.

CONTACT US

To locate a dealer near you, visit our website at www.fleetwoodrv.com or call 1-800-444-4905. We can also be contacted at Fleetwood Customer Relations, P.O. Box 1007, Decatur, IN 46733.

FLEETWOOD TRAVELCADE CLUB

As a Fleetwood owner, you're eligible to become a member of the Fleetwood Travelcade Club. It's a perfect way to meet other Fleetwood owners who love to travel across America and share in the RV lifestyle. Call (877) 577-2560 or visit our website at www.fleetwoodrv.com/owners_clubs to learn more and join the fun!

RV OWNERCARE*

See your local dealer for complete details.

IMPORTANT—PLEASE READ

Product information, photography and illustrations included in this publication were as accurate as possible at the time of printing. For further product information and changes, please visit our website at www.fleetwoodrv.com or contact your local Fleetwood dealer. Prices, materials, design and specifications are subject to change without notice. All weights, fuel, liquid capacities and dimensions are approximate. Fleetwood has designed its recreational vehicles to provide a variety of uses for customers. Each vehicle features optimal seating, sleeping, storage and fluid capacities. The user is responsible for selecting the proper combination of loads (i.e.: equipment, fluids, cargo, etc.) to ensure that the vehicle's capacities are not exceeded.

TO OUR CUSTOMERS...

To make sure that you get the maximum satisfaction out of your recreational vehicle purchase, there are several things you should know:

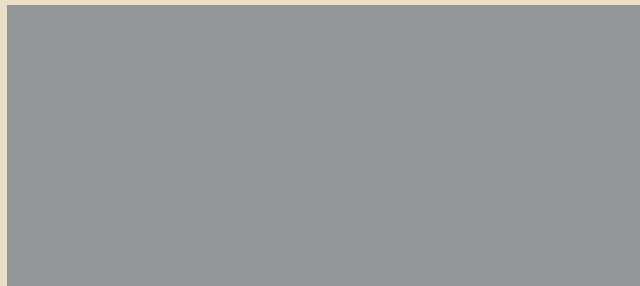
1. Learn all you can about the travel trailer or fifth wheel you're planning to buy. Don't rely on word of mouth. Get the facts about the actual trailer length, width, unloaded weight with options, Gross Vehicle Weight Rating, and Cargo Carrying Capacity. These are usually available in the manufacturer's sales literature or from the Cargo Carrying Capacity Label located in each trailer. Be sure to check this information **before** you decide which unit to buy.

2. Verify the towing capacity of your tow vehicle. If you don't know, or aren't sure, you can ask at your automotive dealership. Be sure to match its tow rating to the loaded (not dry) weight of your trailer. Include the weight of water, additional accessories, clothing, food, and gear. To help Fleetwood travel trailer customers estimate this total weight, our Gross Vehicle Weight Ratings reflect the maximum weight of the trailer when fully loaded for camping. Be sure the weight of the tow vehicle plus the weight of your trailer do not exceed the Gross Combined Weight Rating of the tow vehicle.

Taking these simple steps before you buy will help ensure that your trailer and tow vehicle combination is just what you wanted.

See you on the trail!

Your Local Fleetwood Dealer Is:



treadlightly!
OF TREAD LIGHTLY LLC



*For complete info see your Fleetwood dealer.

©2006. Fleetwood Enterprises, Inc. Printed in the U.S.A.
2nd Edition TE07B2, 11/06.

FLEETWOOD
Travel Trailer Division