

FLEETWOOD.RV

TIOGA[®]

1 9 9 9

A MERICA'S NUMBER ONE MINI MOTOR HOME.

At Fleetwood RV, we've been making America's favorite recreational vehicles for nearly 50 years. We've done it by building honest value, rugged dependability and peace of mind into every one of them. That's exactly what's made Tioga the number one selling mini motor home in the USA. This year, Fleetwood RV is offering both the popular Tioga and the more luxurious Tioga SL. Both deliver more room, more storage and more comfort to more Americans than any other mini motor homes. And with car-like handling, they're remarkably easy to drive. So, whether you're boating, hiking, hunting, skiing, off-roading or camping, Tioga has what it takes to get you there and back in style. Tioga offers a broad range of unique, practical floor plans, including models with our EZ Glide™ Slide-out Room System. And our exclusive Mor-ryde® Suspension Enhancement System* reduces suspension vibration, and also protects against damaging road shock, so Tioga rides smoother and quieter than any other mini motor home on the road. Some models even offer a 4x4 option which allows you to drive confidently in adverse weather conditions. As you can see, the new Tioga is better than ever. Which is probably why it's still the first choice in mini motor homes.

*Selected models.

¹ GVWR (Gross Vehicle Weight Rating): Maximum permissible weight of this motor home. The GVWR is equal to or greater than the sum of the unloaded vehicle weight plus the net carrying capacity.

² GAWR (Gross Axle Weight Rating): Maximum permissible loaded weight a specific axle is designed to carry.

³ GCWR (Gross Combination Weight Rating): Value specified by the motor home manufacturer as the maximum allowable loaded weight of this motor home with its towed trailer or towed vehicle.

⁴ Overall lengths taken from front bumper to rear bumper.

⁵ Tank manufacturer's listed water capacity (WC) actual filled. LP capacity is 80% of listing due to safety shut off required on tank. *Limited by second-stage manufacturer to 3500 lbs over GVWR.

1999 TIOGA SPECIFICATIONS

Ford Chassis	22C	23B	24D	26F	29L	29Z	29H	31T	31W
Engine CID	415	415	415	415	415	415	415	415	415
Wheelbase	138"	158"	158"	176"	190"	190"	214"	214"	214"
GVWR lbs ¹	10,500	11,500	11,500	14,050	14,050	14,050	14,050	14,050	14,050
GAWR lbs (front) lbs ²	3,800	4,600	4,600	4,600	4,600	4,600	4,600	4,600	4,600
GAWR (rear) lbs ²	7,500	7,810	7,810	9,450	9,450	9,450	9,450	9,450	9,450
GCWR lbs ³	14,000*	15,000*	15,000*	17,550*	17,550*	17,550*	17,550*	17,550*	17,550*

Chevrolet Chassis	22C	23B	24D	26F	29L	29Z	29H	31T	31W
Engine CID	454	454	454	N/A	N/A	N/A	N/A	N/A	N/A
Wheelbase	139"	159"	159"	N/A	N/A	N/A	N/A	N/A	N/A
GVWR lbs ¹	12,300	12,300	12,300	N/A	N/A	N/A	N/A	N/A	N/A
GAWR lbs (front) lbs ²	4,300	4,300	4,300	N/A	N/A	N/A	N/A	N/A	N/A
GAWR (rear) lbs ²	8,600	8,600	8,600	N/A	N/A	N/A	N/A	N/A	N/A
GCWR lbs ³	15,800*	15,800*	15,800*	N/A	N/A	N/A	N/A	N/A	N/A

Dimensions	22C	23B	24D	26F	29L	29Z	29H	31T	31W
Overall Length-Ford ⁴	22' 5"	23' 8"	24' 6"	26' 7"	29' 3"	29' 3"	29' 11"	31' 4"	31' 4"
Overall Length-Chevy ⁴	22' 10"	24' 1"	24' 11"	N/A	N/A	N/A	N/A	N/A	N/A
Overall Height w/A/C	131"	131"	131"	138"	138"	138"	138"	138"	138"
Overall Width (max.)	99"	99"	99"	99"	99"	99"	99"	99"	99"
Interior Height (max.)	83"	83"	83"	83"	83"	83"	81"	81"	81"
Interior Width (max.)	96"	96"	96"	96"	96"	96"	96"	96"	96"

Liquid Capacities (gallons)	22C	23B	24D	26F	29L	29Z	29H	31T	31W
Fresh Water/Tank	30	30	37	30	35	35	50	50	40
Grey Water Holding	30	30	30	32	32	32	43	43	43
Black Water Holding	25	30	30	32	32	32	47	47	40
Appliance LPG Tank WC ⁵	14	14	14	14	14	14	14	14	14
Fuel Tank Ford	35	55	55	55	55	55	55	55	55
Fuel Tank Chevy	35	55	55	N/A	N/A	N/A	N/A	N/A	N/A

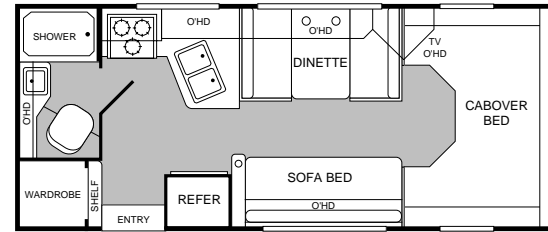
Body Structure, Standard Equipment

Smooth Seamless Fiberglass Sidewalls Crowned Seamless Rubber Roof Basement Storage (26'-31' models)

Body Structure, Options	22C	23B	24D	26F	29L	29Z	29H	31T	31W
Undercoating	Opt	Opt	Opt	Opt	Opt	Opt	Std	Std	Std

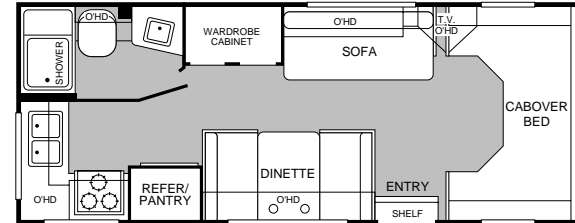
MODEL
22C

- Sofa bed and dinette
- Fully enclosed bathroom
- Double galley sink
- Large wardrobe
- Cabover bed



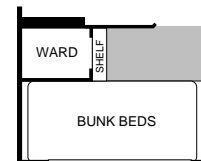
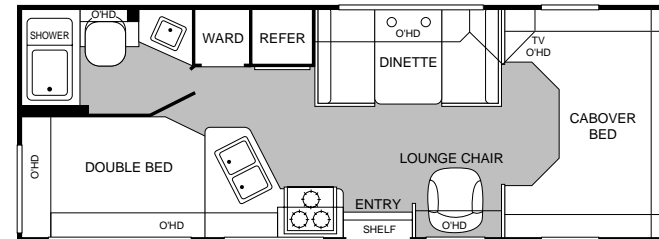
MODEL
23B

- Rear kitchen
- Fully enclosed bathroom
- Sofa bed and dinette
- Double galley sink
- Large wardrobe



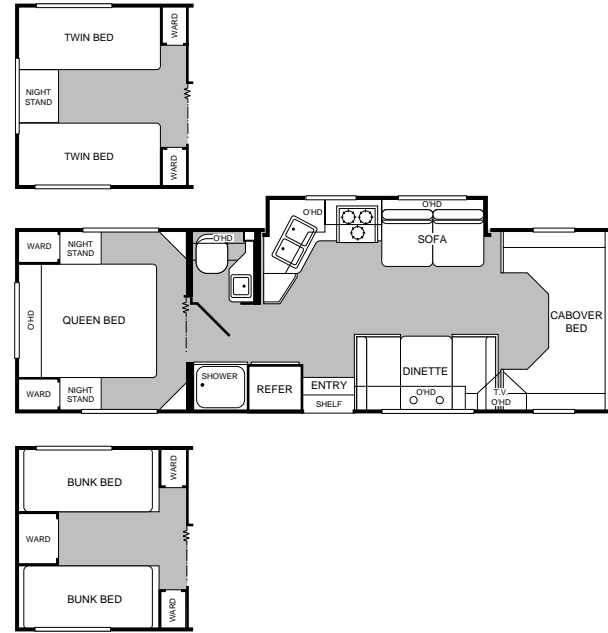
MODEL
24D

- Double bed
- Dinette
- Lounge chair
- Fully enclosed bathroom
- Opt'l bunk beds



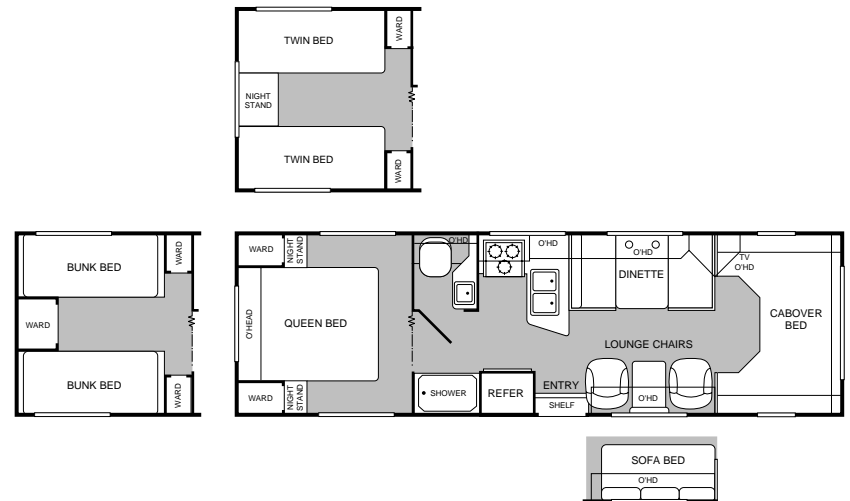
MODEL
29L

- Galley slide-out
- Island queen bed
- Private toilet
- 3 bedroom configurations
- Double galley sink



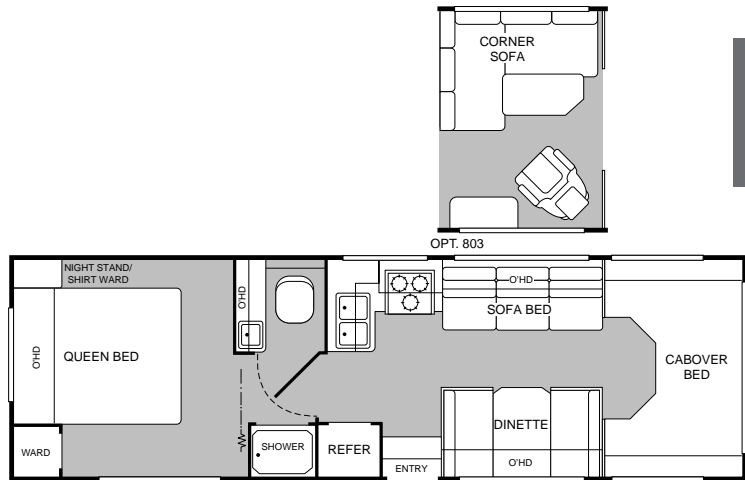
MODEL
29Z

- 3 bedroom configurations
- Dinette
- Private toilet
- Double galley sink



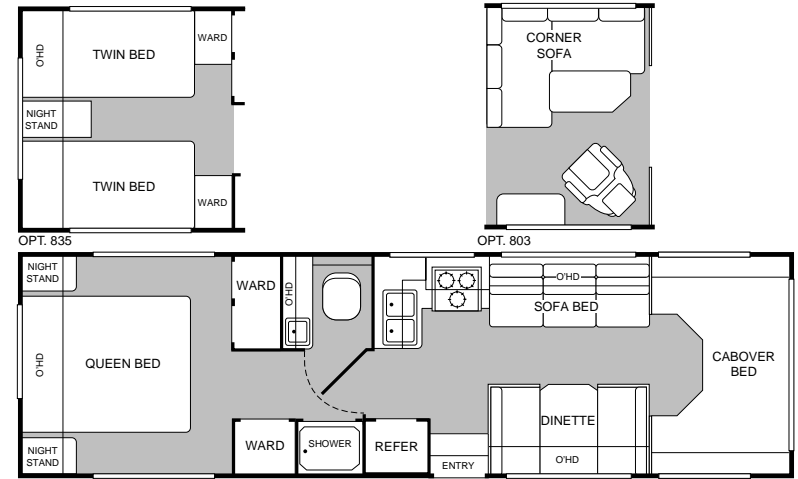
S L M O D E L S

MODEL 29H



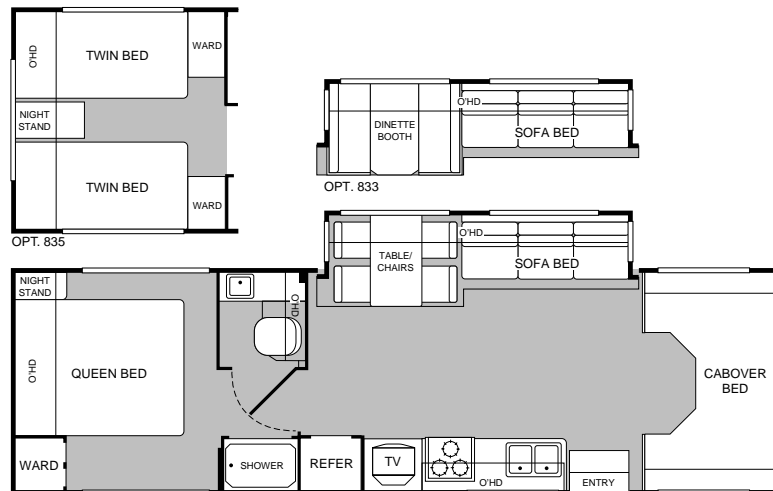
- Island queen bed
- Private toilet
- Dinette and sofa bed
- Double galley sink
- Opt'l corner sofa and lounge chair

MODEL 31T



- Dinette and sofa bed
- Island queen bed
- Private Toilet
- Opt'l corner sofa and lounge chair
- Opt'l twin beds

MODEL 31W



- Living room slide-out
- Island queen bed
- Private toilet
- Opt'l dinette and sofa bed
- Opt'l twin beds

1999 TIOGA FEATURES AND AVAILABLE EQUIPMENT

Exterior Automotive and Electrical, *Standard Equipment*

Trailer Hitch	Chrome-plated Front Bumper	Powder-coated Rear Bumper
Running Boards	GFI Circuit Protection	TV Antenna
Stainless Steel Wheel Simulators (Tioga SL)	GFI Protected Patio Receptacle	12v Lighting System
Chrome Wheel Covers (Tioga)	AC/DC Power Converter	12v Patio Light
Spare Tire		

SL MODELS

Ext. Automotive and Elect., *Options*

	22C	23B	24D	26F	29L	29Z	29H	31T	31W
DSS Satellite Dish	Opt	Opt	Opt	Opt	Opt	Opt	Opt	Opt	Opt
A/C 13.5m	Opt	Opt	Opt	Opt	Opt	Opt	N/A	N/A	N/A
A/C 13.5m w/Solar Battery Charger	Opt	Opt	Opt	Opt	Opt	Opt	N/A	N/A	N/A
A/C 15m w/Solar Battery Charger	N/A	N/A	N/A	N/A	N/A	N/A	Opt	Opt	Opt
Power Entry Step	Opt	Opt	Opt	Opt	Opt	Opt	Opt	Opt	Opt
Exterior Ladder	Opt	Opt	Opt	Opt	Opt	Opt	Opt	Opt	Opt
Mud Flaps	N/A	N/A	N/A	Std	Std	Std	Std	Std	Std
Exterior Shower	Opt	Opt	Opt	Opt	Opt	Opt	Std	Std	Std
Auxiliary Battery	Std	Std	Std	Std	N/A	Std	N/A	N/A	N/A
Dual Auxiliary Batteries	Opt	Opt	Opt	Opt	Std	Opt	Std	Std	Std
Auxiliary Start Circuit	Std	Std	Std	Std	Std	Std	Std	Std	Std
Prewired for 4.0kw Generator	Std	Std	Std	Std	Std	Std	Std	Std	Std
In-floor Heated Tanks	N/A	N/A	N/A	Std	Std	Std	Std	Std	Std
4.0kw Gen-Onan® Microlite	Opt	Opt	Opt	Opt	Opt	Opt	Opt	Opt	Opt
Rear View Camera	N/A	N/A	N/A	N/A	N/A	N/A	Opt	Opt	Opt
Pwr./Heated Rear View Mirrors	N/A	N/A	N/A	N/A	N/A	N/A	Opt	Opt	Opt
Wheel Simulators	Opt	Opt	Opt	Opt	Opt	Opt	Std	Std	Std
Dual Pane Windows	N/A	Opt	Opt	Opt	N/A	Opt	Opt	Opt	N/A
Aux. Battery Disconnect	Opt	Opt	Opt	Opt	Opt	Opt	Opt	Opt	Opt
Steel Running Board	Opt	Opt	Opt	Opt	Opt	Opt	Std	Std	Std
4 Wheel Drive	N/A	Opt	Opt	Opt	N/A	Opt	N/A	N/A	N/A

Interior Automotive, *Standard Equipment*

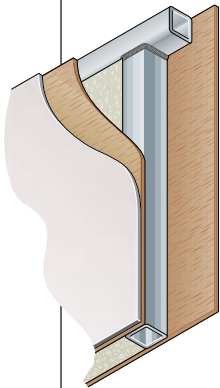
Power Windows/Door Locks	AM/FM Cassette Stereo	Power Steering/Tilt Wheel Cab Air
Conditioner	Dome Light	Windshield Wipers (intermittent)
Cruise Control	Aux 12v Dash Jack	

Interior, *Standard Equipment*

Marine Toilet	Molded Shower Enclosure	Molded Shower Pan
Stainless Steel Double Galley Sink	Carpeting w/Pad	Reclining Bucket Seats
12v Lighting System	Dovetail Drawer Construction	Vinyl Flooring-Galley/Lay
Radius Cornered Countertops	Utensil Tray	12v Bath Vent
Day/Night Pleated Shades (SL models)	Bedsread (on applicable models)	20m BTU Furnace
Water Filter System (SL models)	AC/DC Power Converter/Charger	30m BTU Furnace (SL models)
GFI Circuit Protection	Switch Controlled Lighting	Cabover Ladder
Glass Shower Encl. (on applicable models)	Telephone Jack	TV 20" Color w/Remote (31' W only)

WHEN THE DUST SETTLES, THERE'S NOT AN RV IN THE WORLD THAT'S TESTED LIKE A FLEETWOOD RV.

If anyone loves to tear an RV apart, it's us. Because at Fleetwood RV nothing's more important than your safety and comfort. While our improvements aren't all visible to the eye, we commit millions of dollars a year in product development and research to build what we believe are the finest RVs in the world.



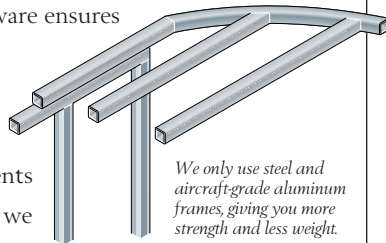
Vacubond construction ensures that every roof, wall and floor is completely sealed.

It all starts with advanced computer analysis of new prototype designs. Once built, the prototypes undergo rigorous load bearing and weight distribution stress tests. Stringent load analysis software ensures improved reliability.

Then the relentless testing and re-testing of components begins. In a couple of weeks we can simulate years of real world

use. Slide-out mechanisms have to open and shut thousands of times without a complaint. Seat belts must withstand more than three-ton stress levels without a whimper. And doors have to endure tens of thousands of slammings without losing their composure.

At the end of the day, we've thrown just about anything and everything we can at our units, just to make sure we have the best designed and most thoroughly tested RVs in the world. Then we back them with a limited 1-year/3-year warranty supported by Fleetwood RV dealers throughout the U.S. and Canada. So you have what we believe to be the best-handling, safest, most comfortable RV anywhere.



We only use steel and aircraft-grade aluminum frames, giving you more strength and less weight.

Dear Friend,

Here at Fleetwood RV, we have over 200 people working on research and development. But we get our best ideas when we hit the road in our recreational vehicles. Talking to people like you and noticing for ourselves little ways to make RVing more comfortable, more convenient and more fun.



If I had two pieces of free advice to give a friend in the market for an RV, the first would be to get a Fleetwood RV. Not because we need to sell one more. Heck, we sell more than anyone else. But because I know we build the best product out there for the money.

Second, really think about your dealer. He has to be someone you trust for advice, service and accessories. Only the best get to be Fleetwood RV dealers in the first place. Then we work with them to continually improve customer satisfaction. That's why 9 out of 10 owners would recommend their Fleetwood RV to a friend and 9 out of 10 of them would also recommend their Fleetwood RV dealer.

I hope that helps. And I also hope I see you out there, somewhere in this beautiful world, enjoying your new Fleetwood RV while I'm out there doing the same.

John C. Crean

Chairman Emeritus and Founder
Fleetwood Enterprises, Inc.

Your local Fleetwood RV dealer is:

If your local dealer is not indicated, write to the address below, or call us toll free 24 hours a day at 1-800-444-4905. Or visit our Website at <http://www.fleetwood.com>

FLEETWOOD RV

America's Favorite Recreational Vehicles

Fleetwood Enterprises, Inc.
P.O. Box 2875, Van Nuys, CA 91404-2875

Product information and photography included in this brochure were as accurate as possible at the time of publication. Subsequent refinements may be evident in the actual product. Prices and specifications are subject to change without notice. All fuel and liquid capacities are approximate and dimensions are nominal. Fleetwood has designed its motor home brands to provide a variety of potential uses for its customers. Each unit features the optimum storage, fluid, seating and sleeping capabilities. Though the customer enjoys this potential, he/she also has the responsibility to select the proper combinations of loads without exceeding the chassis weight capacities.