

BOUNDER® 2013
BOUNDER CLASSIC

BOUNDER® 2013
BOUNDER CLASSIC



 **FLEETWOOD RV** | CLASS A GAS

READY TO ROAM

When you hit the road, Bounder and Bounder Classic give you everything you need. After a long day of driving, playing or exploring, Bounder welcomes you with cozy comfort and all the modern conveniences. Your journey beckons. When you're ready to answer, Bounder will take you there.



▲ BOUNDER 35K shown in Natural Stone interior décor with Toasted Chestnut wood cabinetry



WHY BUY BOUNDER AND BOUNDER CLASSIC?

More Value for Your Money When you compare motor homes, Bounder gives you more for your dollar. It's packed with features and ready to go.

Maximum Functionality Bounder is known as "The Motor Home That Really Works" because it provides straightforward functionality.

Built for Long Trips Go right ahead and plan that cross-country journey. We built Bounder for extended travel.

Trusted Name Bounder has been popular for more than 20 years, with sales unmatched by any other motor home brand.

Fully Equipped Bounder provides the necessities for a comfortable, convenient and safe journey. It includes many features standard that others consider optional.

2013 GRAPHICS AND DÉCOR



Champagne Star



Garnet Opal



Sahara Moon



Shadow Mist

Both inside and out, we offer a wide selection of colors, styles and finishes. From the moment you lay your eyes on a Fleetwood RV, the high-style graphics and décor collection welcome you with gracious beauty and contemporary design. We've paid attention to every detail. So wherever you are, you'll feel right at home.

	CARAMEL SLATE	MIXED CHOCOLATE	NATURAL STONE		CABINETRY
SOFA				BUTTERSCOTCH SPICE	
ACCENT					
BEDSPREAD					
COUNTERTOP				TOASTED CHESTNUT	
FLOORING					
CARPET					

BOUNDER STANDARD FEATURES AND OPTIONS

STANDARD FEATURES

INTERIOR THROUGHOUT

- 120V/12V AC/DC Converter
- Water Pump Switches in Multiple Locations
- 34,000 BTU Furnace
- 10-Gallon Quick Recovery Water Heater w/Direct Spark Ignition (Gas/Electric)
- Complete PEX Plumbing System
- Deluxe Roller Bearing, Full-Extension Drawer Guides and Transit-Ship Locks
- Dual 6V Deep-Cycle House Batteries
- Dual Roof A/C High-Efficiency w/Solar Panel, Heat Pump & Chill Grills
- Energy Management System
- Halogen Lighting
- Solid Divider Doors
- TV Antenna w/Signal Booster
- Full HD Video System
- Wall Switches
- Water Heater Bypass Valve
- Whole-Coach Water Filtration System
- Wood Drawers
- Soft-Touch Vinyl Ceiling
- Computer Workstation In-Dash
- 1,200-Watt Inverter

DRIVER CONVENIENCE

- 3-Point Seatbelts at Driver & Front Passenger Seats
- AM/FM Radio w/CD Player, Satellite Radio-Ready
- Auto A/C Heater Combo
- Auxiliary Start Circuit
- Battery Disconnect Switches
- Cruise Control
- Dash Fans
- Sun Visors
- Driver/Front Passenger Captain's Chairs w/Reclining Back/Slide Controls
- Passenger Chair Footrest
- Intermittent Wiper Control
- Low-Profile Engine Cover
- Monitor Panel in Dash
- Radio Switch Main/Auxiliary Power
- Soft-Surface Automotive Dash
- Tilt Steering Wheel
- Color Rear and Turn Signal Vision System

LIVING ROOM

- 40" LCD HDTV
- DVD Home Theater Sound System
- Entry Assist Handle
- Residential Seat Styling

GALLEY

- Convection Microwave Oven
- 12 cu.ft. Dometic® 4-Door Refrigerator w/Icemaker
- Adjustable Cabinet Shelves (Select Cabinets)
- Demand Water Pump
- Fan-Tastic® Power Roof Vent

- Large Drawers Under Dinette
- Large, Double Stainless-Steel Sink
- Raised-Panel Cabinet Doors
- Single-Lever Galley Faucet w/Pullout Sprayer
- Sink Cover/Cutting Board
- Vinyl Flooring
- Wastebasket
- 3-Burner Cooktop
- Dream Dinette Mechanism
- Solid-Surface Backsplash

BEDROOM

- Bedspread w/Décor Pillows
- Pleated Shades
- Rear Speakers
- Restonic® Innerspring Mattress
- Torque Windows
- 32" LCD HDTV

BATHROOM

- Fan-Tastic® Power Roof Vent w/Wall Switch
- Glass Shower Enclosure w/Skylight & Lower Step Threshold
- Hardwood Bath Door/Trims
- Molded Tub/Shower Enclosure
- Porcelain Toilet w/Water Saver
- Skylight in Tub/Shower
- Toilet Tank San-T-Flush™ System

SAFETY/CONVENIENCE (INTERIOR)

- 10 ABC Fire Extinguisher
- Carbon Monoxide Detector/Alarm
- Propane Detector/Alarm
- Smoke Detector/Alarm
- Child Safety Tether
- Multiple Seatbelt Locations
- 30" Wide Entry Door

EXTERIOR THROUGHOUT

- 5.5 kW Onan® MicroQuiet Generator
- 50-Amp Service
- Dual-Battery Charge Control
- Dual-Pane Windows w/Screens
- Patio Receptacle
- Fiberglass Front/Rear Caps
- 4-Color Full-Body Paint
- Heated Water & Holding Tank Compartments
- One-Piece Panoramic Windshield
- Mud Flaps
- Park Cable Receptacle
- Patio Awning - Electric
- Utility Compartment w/Exterior Shower
- ABS Wheel Well Trims
- TV/12V Jack in Doorside Compartment (Select Models)

AUTOMOTIVE

- 4-Point Automatic Levelers
- Large One-Piece Bonded-in Windshield
- Trailer Hitch w/7-Pin Electrical Hook-Up†
- Underhood Utility Light
- 22.5" Aluminum Wheels
- Wiper System with Large Swept Area

SAFETY/CONVENIENCE (EXTERIOR)

- Wide, 30" Entry Door w/Screen Door & Deadbolt Lock
- Porch Light (Doorside)
- Power Entry Step
- Remote/Heated Rear-View Mirrors w/Side-View Cameras
- Roof Ladder
- Automotive Safety Glass
- Daytime Running Lights
- Hydraulic 4-Wheel Disc Brakes w/4-Wheel Anti-Lock Brakes

STORAGE

- EZ Store Compartment on Living Area Slide-Outs
- Gas Lift Strut Supports
- Hidden, Stainless-Steel Latch Rods
- Insulated Aluminum Luggage Doors w/Single-Paddle Metal Latches & Stainless-Steel Hinges
- Lighted Luggage Compartments
- Pass-Through Storage (Select Models)
- Rotomolded Polyethylene Luggage Compartments
- Side Swinging Luggage Doors (Select Locations)

BODY STRUCTURE

- Aluminum Interlocking Floor/Wall/Ceiling Framing
- Power Platform® Construction (Fleetwood RV Exclusive)
- Basement Floor Configuration
- Radius Roof w/Ducted A/C
- Vacu-Bond® Upper/Lower Floors
- Vacu-Bond® Walls w/Smooth Exterior High-Gloss Fiberglass

OPTIONS

INTERIOR

- CSA Package (Canadian Specs)**
- Washer/Dryer
- Neutral Loss Protection
- DSS Auto-Seek Satellite Dome
- Blu-ray® Home Theater Sound System
- Day/Night Double-Roller Shades

DRIVER CONVENIENCE

- Powered Front Shade

LIVING ROOM

- 32" LCD HDTV in Front Overhead (33C/35K)
- Facing Dinette
- Electric Fireplace
- Free-Standing Dinette w/ Credenza (33C/35K)

GALLEY

- 3-Burner Range w/Oven

BEDROOM

- King Bed (33C)

EXTERIOR

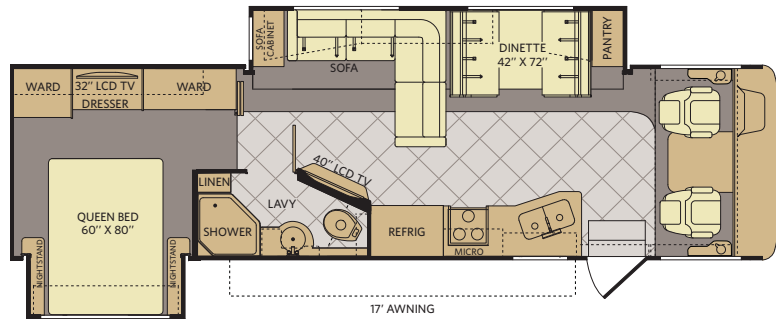
- Front Protective Mask Film
- Exterior Entertainment Center

†Not all options are available on all floor plans. See your Fleetwood dealer for details.

**CSA standards may require substitution or deletion to achieve conformance.

BOUNDER FLOOR PLANS

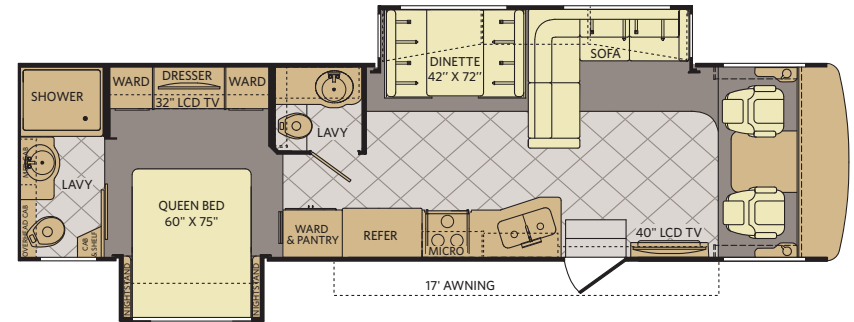
33C



INTERIOR STORAGE CAPACITY: 123 CU. FT.
EXTERIOR STORAGE CAPACITY: 115 CU. FT.

Available options: 087, 093, 113, 126, 139, 830, 833, 852

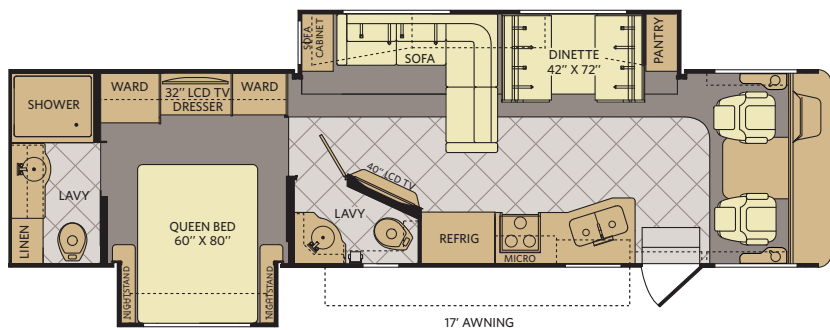
36E



INTERIOR STORAGE CAPACITY: 146 CU. FT.
EXTERIOR STORAGE CAPACITY: 118 CU. FT.

Available options: 093, 113, 126, 139, 192, 830

35K



INTERIOR STORAGE CAPACITY: 126 CU. FT.
EXTERIOR STORAGE CAPACITY: 144 CU. FT.

Available options: 087, 093, 113, 126, 139, 830, 833

FLOOR PLAN OPTIONS



OPT. 087
FRONT 32\"/>



OPT. 093
EXTERIOR
ENTERTAINMENT
CENTER



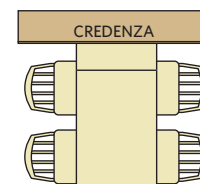
OPT. 113
3-BURNER
RANGE
W/OVEN



OPT. 126
WASHER
/DRYER



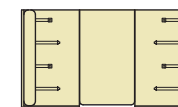
OPT. 139
ELECTRIC FIREPLACE



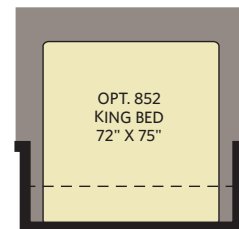
OPT. 833
FREE-STANDING DINETTE
WITH CRENZNA



OPT. 192
SOFA SLEEPER
W/AIR MATTRESS
& FOOTREST



OPT. 830
FACING DINETTE



OPT. 852
KING BED
72\"/>

BOUNDER WEIGHTS & MEASUREMENTS

CHASSIS	POWER PLATFORM®		
MODELS	33C	35K	36E
Engine Displacement (liters)	6.8	6.8	6.8
Wheelbase (inches)	208"	228"	228"
GVWR (lbs) ¹	22,000	22,000	22,000
Front GAWR (lbs) ²	8,000	8,000	8,000
Rear GAWR (lbs) ²	15,000	15,000	15,000
GCWR (lbs) ³	26,000	26,000	26,000
Hitch Rating Weight (lbs) ^{†, ††}	5,000	5,000	5,000
Tongue Weight (lbs) [†]	500	500	500
Fuel Capacity (gal)	80	80	80

POWER PLATFORM® CHASSIS

Model: Ford®
Engine: 6.8L Triton V10
Transmission: 5-Speed, Automatic w/Overdrive

Alternator: 175 Amp
Torque: 457 lb-ft @ 3,250 RPM
Horsepower: 362HP

DIMENSIONS & CAPACITIES

MODELS	33C	35K	36E
Overall Length (inches) ⁴	34' 3"	36' 3"	36' 3"
Overall Height (with A/C)	12' 10"	12' 10"	12' 10"
Overall Width (maximum) ^{5, 6}	102"	102"	102"
Interior Height (maximum)	84"	84"	84"
Interior Width (maximum)	96"	96"	96"
Fresh Water Holding Tank (gal)	85	85	85
Grey Water Holding Tank (gal)	58	58	58
Black Water Holding Tank (gal)	42	42	42
Appliance Propane Tank (gal) (WC) ⁷	25	25	25
Water Heater Tank (gal)	10	10	10

ADDENDUMS

- GVWR (Gross Vehicle Weight Rating) is the maximum permissible weight of this fully loaded motorhome. The GVWR is equal to or greater than the sum of the (UVW) unloaded vehicle weight plus the (OCCC) occupant cargo-carrying capacity.*
- GAWR (Gross Axle Weight Rating) is the maximum permissible loaded weight a specific axle is designed to carry.
- GCWR (Gross Combined Weight Rating) is the value specified by the motorhome manufacturer as the maximum allowable loaded weight of this motorhome with its towed vehicle. Towing and braking capacities may be different. Refer to Fleetwood and chassis manufacturer's manuals for complete information.
- Length measured from front bumper to rear bumper (excludes accessories).
- Excludes safety equipment and awnings.
- Motorhomes feature a body width over 96" which will restrict your access to certain roads. Before purchasing, you should research any state and/or province road laws which may affect your usage.
- Tank manufacturer's listed water capacity (WC). Actual propane capacity is 80% of water listing as required by the safety code.

† The chassis manufacturer recommends the installation of a supplemental brake control system to activate the brakes on the vehicle or trailer you are towing. Hitch receiver ratings expressed are maximum for the hitch receiver installed and may require the purchase of additional equipment that is dependent on the weight of the towed load. Consult with hitch receiver manufacturer for further information.

†† Minimum Towable Load is the available weight, up to GCWR, when the coach is fully loaded to maximum GVWR. However, if the coach is loaded to something less than maximum GVWR, that extra available weight can be added to your Towable Load. For example, if your coach is loaded to 1000lbs less than maximum GVWR, your Towable Load increases accordingly.

* UVW and OCCC are found on the label containing the federal certification tag in each RV.

IMPORTANT—PLEASE READ: Product information, photography and illustrations included in this publication were as accurate as possible at the time of printing. For further product information and changes, please visit our website at www.fleetwoodrv.com or contact your local Fleetwood RV dealer. Prices, materials, design and specifications are subject to change without notice. All weights, fuel, liquid capacities and dimensions are approximate. Fleetwood RV has designed its recreational vehicles to provide a variety of uses for its customers. Each vehicle features optimal seating, sleeping, storage and fluid capacities. The user is responsible for selecting the proper combination of loads (i.e., occupants, equipment, fluids, cargo, etc.) to ensure that the vehicle's capacities are not exceeded.

2013 GRAPHICS AND DÉCOR



Silver Cranberry



Mocha Frost



Black Ice

Both inside and out, we offer a wide selection of colors, styles and finishes. From the moment you lay your eyes on a Fleetwood RV, the high-style graphics and décor collection welcome you with gracious beauty and contemporary design. We've paid attention to every detail. So wherever you are, you'll feel right at home.

	CARAMEL SLATE	MIXED CHOCOLATE	NATURAL STONE	CABINETY
SOFA				
ACCENT				
BEDSPREAD				
COUNTERTOP				
FLOORING				
CARPET				

BUTTERSCOTCH SPICE

TOASTED CHESTNUT

BOUNDER CLASSIC STANDARD FEATURES AND OPTIONS

STANDARD FEATURES

INTERIOR THROUGHOUT

- Dual 11.0/13.5 BTU Ducted Air Conditioners
- Soft-touch Padded Vinyl Ceiling
- Halogen Lighting
- 34,000 BTU Furnace (30,000/20,000 BTU at 36R)
- 6-Gallon Quick-Recovery Water Heater w/Direct Spark Ignition
- Battery Disconnect System
- Automotive A/C Heater Combo
- PEX Plumbing System
- Deluxe Roller Bearing, Full-Extension Drawer Guides
- Wood Cabinet Doors w/Raised Panels at Upper Doors
- Hidden Cabinet Door Hinges
- On-Demand Water Pump w/Filter
- Systems Monitor Panel
- 120V/12V AC/DC Converter
- Central Electrical Panel w/Charger
- Energy Management System
- Wall-Mounted Heat Registers/Floor Registers in Bedroom
- Water Heater Bypass

DRIVER CONVENIENCE

- 3-Point Seatbelts at Driver & Front Passenger Seats
- AM/FM Radio w/CD & Electronic Tuning
- Auxiliary Start Circuit
- Cruise Control
- Flexsteel® Driver Captain's Chair w/Reclining Back/Slide Controls
- Flexsteel® Passenger Chair w/Reclining Back/Slide Controls and Footrest
- Intermittent Wiper Control
- Radio Switch Main/Auxiliary Power
- Tilt Steering Wheel
- 12V Power Jack

LIVING ROOM

- 32" LCD HDTV Mid-Coach Location
- Night Pleated Shades
- Video Control Box
- DVD Home Theater Sound System
- Vinyl Floor Covering in Lavy/Galley/Living Room
- Sofa Bed w/Air Mattress

GALLEY

- 9 cu. ft. Dometic® Refrigerator
- 3-Burner Range w/17" Oven
- 30" Microwave
- Fan-Tastic® Power Roof Vent
- Large Stainless-Steel Double Sink
- High-Rise Faucet
- Wood Drawer Construction
- Whole-Coach Water Filtration System
- Dream Dinette Table

BEDROOM

- Wardrobe w/Mirrored Doors
- Innerspring Mattress
- Rear TV Receptacle
- Adjustable Reading Lights

BATHROOM

- Porcelain Marine Toilet
- Molded ABS Shower/Tub w/Surround
- Power Bath Vent
- Skylight in Tub/Shower
- Glass Shower Door (Standard on 34B, 36R, Optional on 30T)
- Shower Curtain (30T)
- Medicine Cabinet w/Adjustable Shelves
- Vanity Lights
- Toilet Tank San-T-Flush™ System

SAFETY/CONVENIENCE (INTERIOR)

- 10 ABC Fire Extinguisher
- Carbon Monoxide Detector/Alarm
- Propane Detector/Alarm
- Smoke Detector/Alarm
- Interior Entry Grab Handle
- Multiple Seatbelt Locations

EXTERIOR THROUGHOUT

- Full Body Paint
- 50 Amp Service
- 5.5 kW Onan® MicroQuiet Generator
- Amber Porch Light
- Awning Rail/Drip Molding (Both Sides)
- Exterior Wash Unit
- Power/Heated Rear-View Mirrors
- Full Basement Configuration
- Pass-Through Basement Storage with Side-Swing Doors for Easy Access
- Dometic® Patio Awning
- 30" Wide Entry Door
- Roof Ladder
- TV Antenna w/Signal Booster
- ABS Front/Rear Wheel Well Trims
- 4-Point Automatic Levelers
- Dual 6V Deep-Cycle 217 Amp Auxiliary Batteries
- Tinted Dual-Pane Windows

AUTOMOTIVE

- Halogen Headlights w/Polycarbonate Lens
- Rear Fuel Fill
- Trailer Hitch w/7-Pin Electrical Hook-Up†
- 5,000 lb. Towing Capacity†
- 19.5" Stainless-Steel Wheel Simulators
- New Wiper System w/Larger Swept Area
- Air-Ride Suspension (Freightliner® Chassis)

SAFETY/CONVENIENCE (EXTERIOR)

- Deadbolt Latch on Entry Door
- Dual-Battery Charge Control
- High-Mounted Taillights
- Exterior Lighted Entry Assist Handle
- One-Piece Swing-Down Engine Access Door
- Park Cable Receptacle

- Patio Receptacle
- Power Entry Step
- Automotive Safety Glass
- Daytime Running Lights
- Hydraulic 4-Wheel Disk Brakes w/4-Wheel ABS (Ford® Chassis)
- Full Air Brakes w/ABS (Freightliner® Chassis)

STORAGE

- Large, Exterior Pass-Through Storage Compartments
- Lighted Luggage Compartments
- Insulated, Side-Swing Luggage Doors
- Rotomolded Polyethylene Luggage Compartments
- Continuous One-Piece Compartment Bulb Seal

BODY STRUCTURE

- Aluminum Interlocking Floor/Wall/Ceiling Framing
- Vacu-Bond® Floor and Ceiling
- Vacu-Bond® Walls w/Smooth High-Gloss Exterior Fiberglass
- Fiberglass Front/Rear Cap
- Windshield Bonded to Fiberglass Front Cap
- Radius Roof w/Ducted A/C
- Power Platform® Construction (Fleetwood Exclusive)



OPTIONS

INTERIOR

- Bedroom LCD TV
- Dual Flat-Panel TV Package (34B)
- King Bed (34B, 36R)
- Dual Wardrobes (34B)
- Glass Shower Door (30T)
- CSA Package (Canadian Specs)**

EXTERIOR

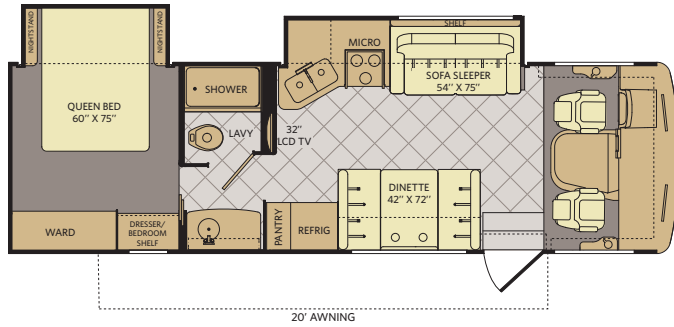
- Front Protective Mask Film
- Additional Fresh Water Storage (30T, 34B, 34M)
- Exterior Chrome Package

†Not all options are available on all floor plans. See your Fleetwood dealer for details.

**CSA standards may require substitution or deletion to achieve conformance.

BOUNDER CLASSIC FLOOR PLANS

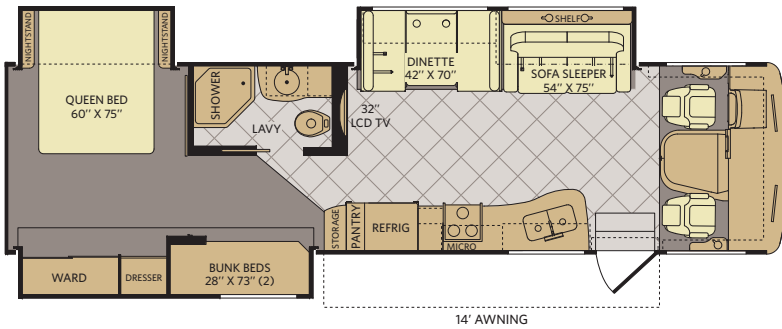
30T



INTERIOR STORAGE CAPACITY: 160 CU. FT.
EXTERIOR STORAGE CAPACITY: 103 CU. FT.

Available options: 084

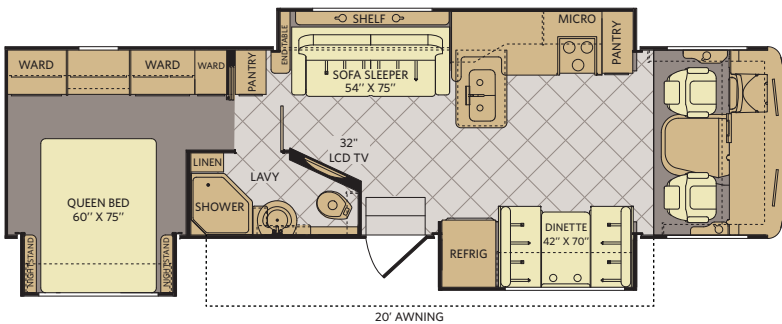
34B



INTERIOR STORAGE CAPACITY: 144 CU. FT.
EXTERIOR STORAGE CAPACITY: 167 CU. FT.

Available options: 012, 084, 157, 852, 883

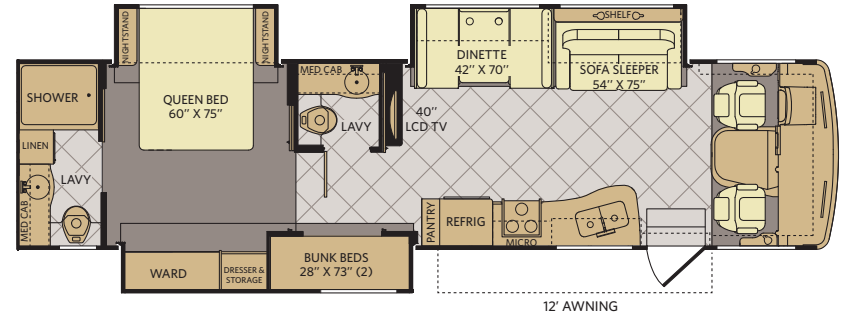
34M



INTERIOR STORAGE CAPACITY: 134 CU. FT.
EXTERIOR STORAGE CAPACITY: 167 CU. FT.

Available options: 084, 191, 852

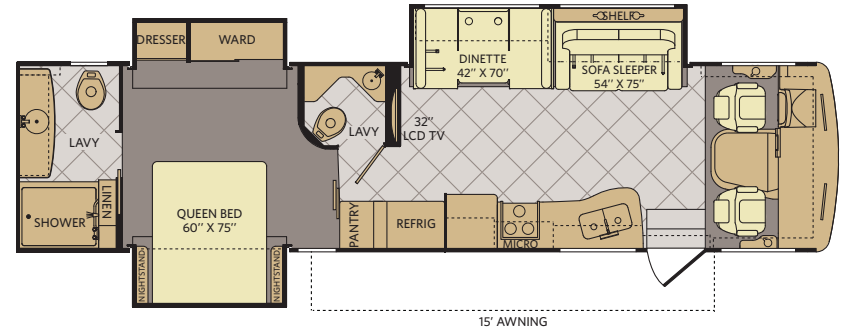
36H



INTERIOR STORAGE CAPACITY: 150 CU. FT.
EXTERIOR STORAGE CAPACITY: 180 CU. FT.

Available options: 084, 157, 852

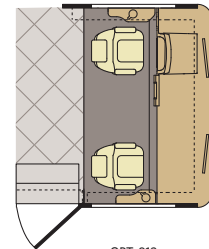
36R



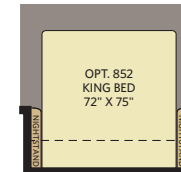
INTERIOR STORAGE CAPACITY: 169 CU. FT.
EXTERIOR STORAGE CAPACITY: 180 CU. FT.

Available options: 012, 084, 852

FLOOR PLAN OPTIONS



OPT. 012
FREIGHTLINER®
FRONT ENGINE DIESEL



OPT. 852
KING BED
72\"/>

OPT. 157
DUAL PANEL TVS



OPT. 883
DUAL WARDROBE

BOUNDER CLASSIC WEIGHTS & MEASUREMENTS

CHASSIS	FORD®			FORD®/FREIGHTLINER®	
MODELS	30T	34M	36H	34B	36R
Engine Displacement (liters)	6.8	6.8	6.8	6.8/6.7	6.8/6.7
Wheelbase (inches)	190"	228"	228"	228"	228"
GVWR (lbs) ¹	18,000	22,000	22,000	22,000	22,000
Front GAWR (lbs) ²	7,000	8,000	8,000	8,000/9,350	8,000/9,350
Rear GAWR (lbs) ²	12,000	15,000	15,000	15,000/17,000	15,000/17,000
GCWR (lbs) ³	23,000	26,000	26,000	26,000	26,000
Hitch Rating Weight (lbs) ^{†, ††}	5,000	5,000	5,000	5,000	5,000
Tongue Weight (lbs) [†]	500	500	500	500	500
Fuel Capacity (gal)	80	80	80	80	80

POWER PLATFORM® FORD® CHASSIS

Model: Ford®
Engine: 6.8L Triton V10 Gas
Torque: 457 lb-ft @ 3,250 RPM
Transmission: Ford® 5-Speed, Automatic w/Overdrive

Alternator: 175 Amp
Horsepower: 362HP

POWER PLATFORM® FREIGHTLINER® CHASSIS

Model: Freightliner® MC Series
Engine: Cummins® ISB Diesel 6.7L
Torque: 560 lb-ft @ 1,600 RPM
Transmission: Allison® 1000 MH 6-Speed, Auto

Alternator: 160 Amp
Horsepower: 240HP

DIMENSIONS & CAPACITIES

MODELS	30T	34M	36H	34B	36R
Overall Length (inches) ⁴	30' 7"	35' 7"	37' 7"	35' 7"	37' 7"
Overall Height (with A/C)	12'	12'	12'	12'	12'
Overall Width (maximum) ^{5, 6}	102"	102"	102"	102"	102"
Interior Height (maximum)	79"	79"	79"	79"	79"
Interior Width (maximum)	96"	96"	96"	96"	96"
Fresh Water Holding Tank (gal)	50	50	85	50	85
Grey Water Holding Tank (gal)	40	40	40	40	40
Black Water Holding Tank (gal)	30	30	30	30	30
Appliance Propane Tank (gal) (WC) ⁷	20	20	20	20	20
Water Heater Tank (gal)	6	6	6	6	6

ADDENDUMS

- GVWR (Gross Vehicle Weight Rating) is the maximum permissible weight of this fully loaded motorhome. The GVWR is equal to or greater than the sum of the (UVW) unloaded vehicle weight plus the (OCCC) occupant cargo-carrying capacity.
- GAWR (Gross Axle Weight Rating) is the maximum permissible loaded weight a specific axle is designed to carry.
- GCWR (Gross Combined Weight Rating) is the value specified by the motorhome manufacturer as the maximum allowable loaded weight of this motorhome with its towed vehicle. Towing and braking capacities may be different. Refer to Fleetwood and chassis manufacturer's manuals for complete information.
- Length measured from front bumper to rear bumper (excludes accessories).
- Excludes safety equipment and awnings.
- Motorhomes feature a body width over 96" which will restrict your access to certain roads. Before purchasing, you should research any state and/or province road laws which may affect your usage.
- Tank manufacturer's listed water capacity (WC). Actual propane capacity is 80% of water listing as required by the safety code.

† The chassis manufacturer recommends the installation of a supplemental brake control system to activate the brakes on the vehicle or trailer you are towing. Hitch receiver ratings expressed are maximum for the hitch receiver installed and may require the purchase of additional equipment that is dependent on the weight of the towed load. Consult with hitch receiver manufacturer for further information.

†† Minimum Towable Load is the available weight, up to GCWR, when the coach is fully loaded to maximum GVWR. However, if the coach is loaded to something less than maximum GVWR, that extra available weight can be added to your Towable Load. For example, if your coach is loaded to 1000lbs less than maximum GVWR, your Towable Load increases accordingly.

* UVW and OCCC are found on the label containing the federal certification tag in each RV.

IMPORTANT—PLEASE READ: Product information, photography and illustrations included in this publication were as accurate as possible at the time of printing. For further product information and changes, please visit our website at www.fleetwoodrv.com or contact your local Fleetwood RV dealer. Prices, materials, design and specifications are subject to change without notice. All weights, fuel, liquid capacities and dimensions are approximate. Fleetwood RV has designed its recreational vehicles to provide a variety of uses for its customers. Each vehicle features optimal seating, sleeping, storage and fluid capacities. The user is responsible for selecting the proper combination of loads (i.e., occupants, equipment, fluids, cargo, etc.) to ensure that the vehicle's capacities are not exceeded.

WHY FLEETWOOD RV?



Quality

There's no cutting corners. Skilled craftsmen build every Fleetwood RV for maximum durability and longevity.



Trust

More people trust Fleetwood RV. After all, we've spent over 60 years perfecting RVs, earning the loyalty of generations of RVers.



Passion

We're truly passionate about the RV lifestyle. Fleetwood RV was founded by RV enthusiasts, and that tradition continues today.



Safety

You've got precious cargo. So we've engineered dozens of innovative safety features into our motor homes to give you more peace of mind.



Service

Help is nearby with 24/7 emergency Fleetwood RV Trusted Roadside Assistance*. And when you need an upgrade or repair, you'll find Fleetwood RV dealers all across North America ready to assist you.



Warranty

Exclusive RV OwnerCare warranty. See your Fleetwood RV dealer for details.

* All 2013 Fleetwood RV motorhomes include a 1-year emergency Fleetwood RV Trusted Roadside Assistance membership. For complete info, see your Fleetwood RV dealer.

**For complete info, see your Fleetwood RV dealer.

www.FleetwoodRV.com



RV OWNERCARE**

Limited one-year/15,000-mile coach warranty and three-year/45,000-mile structural warranty, whichever occurs first, and it is fully transferable for the first 12 months. RV OWNERCARE is one of the RV industry's most comprehensive programs and includes systems, appliances, components and construction, with no deductible and no service charge. RV OWNERCARE coverage is provided by a company that will be around in the future to service your needs. See your nearest Fleetwood RV dealer for a full explanation of benefits and restrictions.

CONTACT US

To locate a dealer near you, visit our website at www.fleetwoodrv.com or call 1-800-322-8216. We can also be contacted at Fleetwood RV Customer Relations, P.O. Box 1007, Decatur, IN 46733.

IMPORTANT—PLEASE READ

Product information, photography and illustrations included in this publication were as accurate as possible at the time of printing. For further product information and changes, please visit our website at www.fleetwoodrv.com or contact your local Fleetwood RV dealer. Prices, materials, design and specifications are subject to change without notice. All weights, fuel, liquid capacities and dimensions are approximate. Fleetwood RV has designed its recreational vehicles to provide a variety of uses for customers. Each vehicle features optimal seating, sleeping, storage and fluid capacities. The user is responsible for selecting the proper combination of loads (i.e., occupants, equipment, fluids, cargo, etc.) to ensure that the vehicle's capacities are not exceeded.



ALLIED SPECIALTY VEHICLES

FLEETWOOD RV IS AN
ALLIED SPECIALTY VEHICLE COMPANY.



YOUR LOCAL FLEETWOOD RV DEALER IS:

©2012. Fleetwood RV, Inc.
Printed in the USA. Inventory Control Number BBC13B2, 09/12.
Model Year 2013, Second Edition.