

BOUNDER® CLASSIC DIESEL

2013

FLEETWOOD RV | CLASS A



Silver Cranberry



Black Ice



Mocha Frost

TOP FEATURES

- Sony® Home Theater Surround Sound System
- 30" Entry Door
- One-Piece Panoramic Windshield
- Soft-Touch Vinyl Ceiling
- Air-Ride Suspension
- Air Brakes
- Hidden Cabinet Hinges
- King Bed (Optional)
- Halogen Lighting

WEIGHTS & MEASUREMENTS

CHASSIS MODELS	FREIGHTLINER®	
	34B	36R
Wheelbase (inches)	228"	228"
GVWR (lbs) ¹	22,000	22,000
Front GAWR (lbs) ²	9,350	9,350
Rear GAWR (lbs) ²	17,000	17,000
GCWR (lbs) ³	26,000	26,000
Hitch Rating Weight (lbs) ¹	5,000	5,000
Tongue Weight (lbs) ¹	500	500
Fuel Capacity (gal)	80	80

FREIGHTLINER® CHASSIS

Model: Freightliner® MC Series
Engine: Cummins® ISB Diesel 6.7L
Transmission: Allison® 1000 MH 6-speed Auto

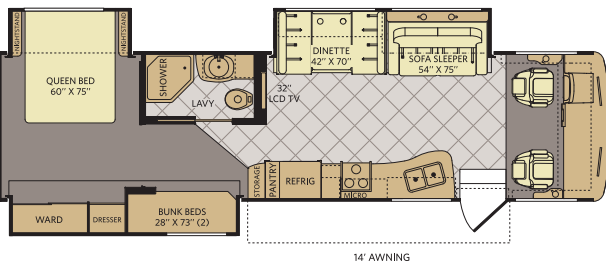
Alternator: Delco Remy 160 AMP
Torque: 560 lb-ft @ 1,600 RPM
Horsepower: 240

DIMENSIONS & CAPACITIES

MODELS	34B	36R
Overall Length ⁴	35' 7"	37' 7"
Overall Height (with A/C)	12'	12'
Overall Width (maximum) ^{5,6}	102"	102"
Interior Height (maximum)	79"	79"
Interior Width (maximum)	96"	96"
Fresh Water Holding Tank (gal)	50	85
Grey Water Holding Tank (gal)	40	40
Black Water Holding Tank (gal)	30	30
Appliance Propane Tank (gal) (WC) ⁷	20	20
Water Heater Tank (gal)	6	6

Liquid Weight Reference:
 Water (gal) = (8.3 lbs/3.8 kgs) Fuel (gal) = (6.1 lbs/2.8 kgs) Propane (gal) = 4.2 lbs/1.9 kgs
Metric Conversion:
 Multiply pounds x 0.453 to obtain kilograms. Multiply gallons x 3.785 to obtain liters.
 Multiply liters x 61 to obtain cubic inches.

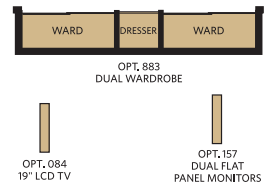
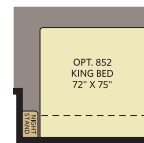
34B



INTERIOR STORAGE CAPACITY: 144 CU. FT.
 EXTERIOR STORAGE CAPACITY: 167 CU. FT.

Available options: 084, 157, 852, 883

OPTIONS



RV OWNERCARE**

Limited one-year/15,000-mile coach warranty and three-year/45,000-mile structural warranty, whichever occurs first, and it is fully transferable for the first 12 months. RV OWNERCARE is one of the RV industry's most comprehensive programs and includes systems, appliances, components and construction, with no deductible and no service charge. RV OWNERCARE coverage is provided by a company that will be around in the future to service your needs. See your nearest Fleetwood RV dealer for a full explanation of benefits and restrictions.

**All 2012 Fleetwood RV motor homes include a 1-year membership to Coach-Net. For complete info, see your Fleetwood RV dealer.

IMPORTANT—PLEASE READ

Product information, photography and illustrations included in this publication were as accurate as possible at the time of printing. For further product information and changes, please visit our website at www.fleetwoodrv.com or contact your local Fleetwood RV dealer. Prices, materials, design and specifications are subject to change without notice. All weights, fuel, liquid capacities and dimensions are approximate. Fleetwood RV has designed its recreational vehicles to provide a variety of uses for customers. Each vehicle features optimal seating, sleeping, storage and fluid capacities. The user is responsible for selecting the proper combination of loads (i.e., occupants, equipment, fluids, cargo, etc.) to ensure that the vehicle's capacities are not exceeded.

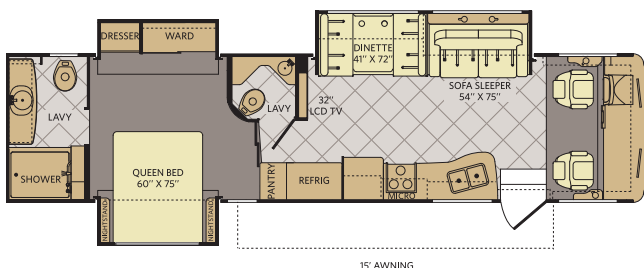
ADDENDUMS

1. GVWR (Gross Vehicle Weight Rating) is the maximum permissible weight of this fully loaded motor home. The GVWR is equal to or greater than the sum of the (UVW) unloaded vehicle weight plus the (OCCC) occupant carrying capacity.[†]
2. GAWR (Gross Axle Weight Rating) is the maximum permissible loaded weight a specific axle is designed to carry.
3. GCWR (Gross Combined Weight Rating) is the value specified by the motor home manufacturer as the maximum allowable loaded weight of this motor home with its towed vehicle. Towing and braking capacities may be different. Refer to Fleetwood and chassis manufacturer's manuals for complete information.
4. Length measured from front bumper to rear bumper (excludes accessories).
5. Excludes safety equipment and awnings.
6. Motor homes feature a body width over 96" which will restrict your access to certain roads. Before purchasing, you should research any state and/or province road laws which may affect your usage.
7. Tank manufacturer's listed water capacity (WC). Actual propane capacity is 80% of water listing as required by the safety code.

[†] The chassis manufacturer recommends the installation of a supplemental brake control system to activate the brakes on the vehicle or trailer you are towing. Hitch receiver ratings expressed are maximum for the hitch receiver installed and may require the purchase of additional equipment that is dependent on the weight of the towed load. Consult with hitch receiver manufacturer for further information.

* UVW and OCCC are found on the label containing the federal certification tag in each RV.

36R



INTERIOR STORAGE CAPACITY: 169 CU. FT.
 EXTERIOR STORAGE CAPACITY: 180 CU. FT.

Available options: 084, 852

FLEETWOOD RV