



Flair®

FLEETWOOD® RV

Fitted and finished with Flair!

What's the first thing that comes to mind when you think about the most important feature of your motor home? Is it affordability, top-of-the-line features, or space and versatility? Chances are it's a blend of all these characteristics, which is what the engineers at Fleetwood had in mind when they developed prototypes for what would become the company's most economical Class A coach.

Flair is one full-featured motor home that packs more than its weight in conveniences and engineering technology. To begin with, Flair's steel-caged construction provides superior strength and rigidity, limiting coach flex on uneven terrain. Equally impressive is Flair's full fiberglass front cap, skirts, and a bumper which is powder-coated to help prevent chipping. And just to let you know that Flair can handle its share of work; an up to 5,000 lb. capacity pre-wired tow hitch, skid plates for undercarriage protection, and optional automatic levelers equip the exterior for any encounter.

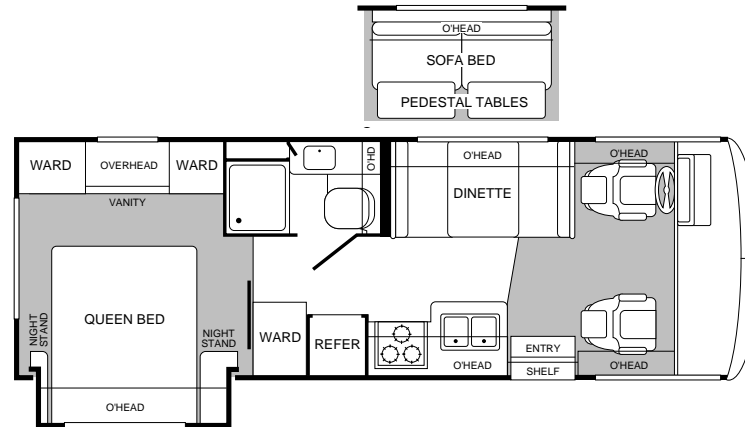
Flair doesn't miss on the creature comforts either: offering day/night shades and a ducted roof air system with optional electronic climate control for the comfort of you and all your little creatures.

With everything Flair's got going for it, it's no wonder it's one of our most popular Class A motor homes on the road today. For versatility and long-lasting value that's a perfect fit with your family, nothing can compare with Flair.

2000 Flair Floor Plans

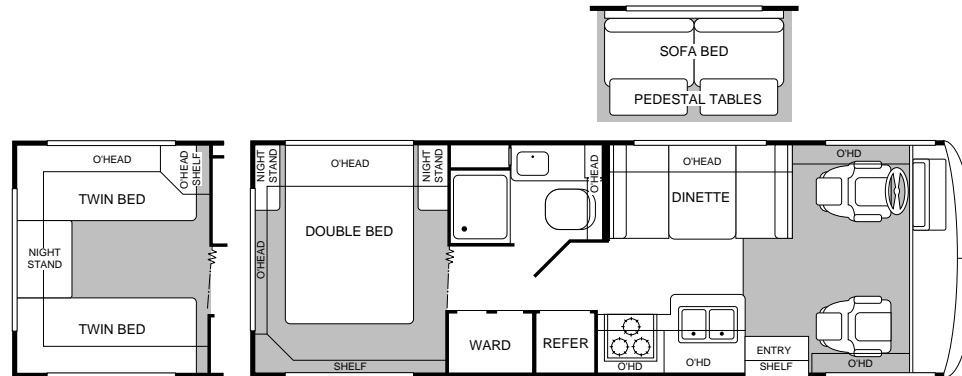
NEW FOR
2000

MODEL 25F



- Dinette or Optional Sofa Bed with Pedestal Tables
- Plenty of Wardrobe Storage
- Island Queen Bed
- Vanity in Bedroom
- Fully Enclosed Bathroom

MODEL 25Y



- Dinette or Optional Sofa Bed with Pedestal Tables
- Double Door Wardrobe
- Island Double Bed
- Optional Twin Beds with Nightstand
- Fully Enclosed Bathroom

MODEL 30H



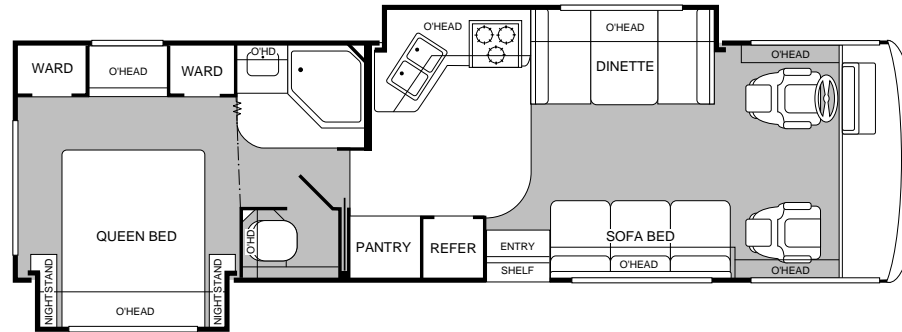
- Dinette and Sofa Bed
- Lounge Chair
- Island Queen Bed
- Optional Twin Beds
- Private Tub/Shower
- Optional SmartRoom®

SmartRoom® converts easily from a bedroom to an office or to 30 sq. ft. of floor space to use however you wish. Actual cabinetry and design varies by product and floor plan.

NEW FOR
2000

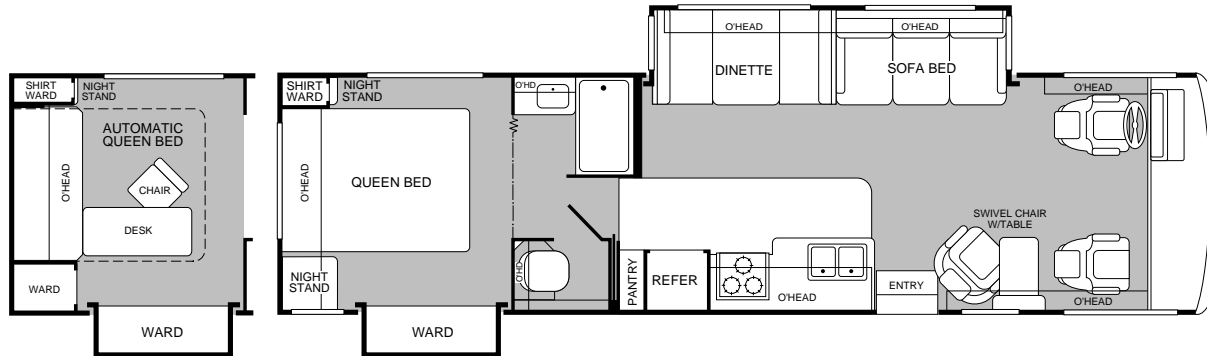
MODEL 31A

- Galley/Living Room Slide-Out
- Bedroom Slide-Out
- Island Queen Bed
- Private Toilet



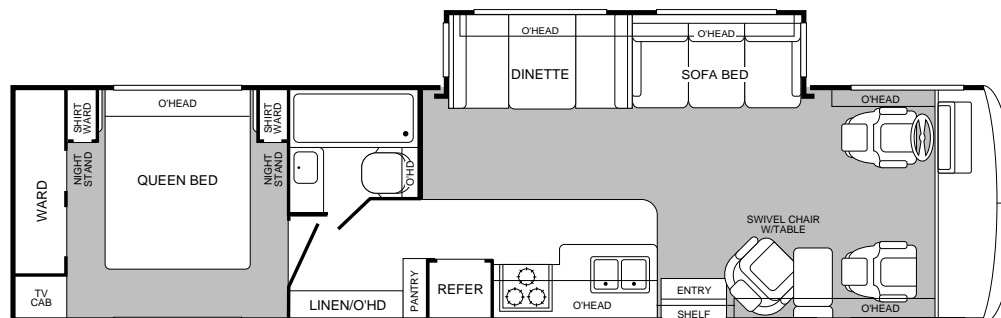
MODEL 32V

- Living Room Slide-Out
- Swivel Chair with Table
- Wardrobe Slide-Out
- Island Queen Bed
- Private Toilet
- Optional SmartRoom®



MODEL 34D

- Living Room Slide-Out
- Swivel Chair with Table
- Island Queen Bed
- Large Wardrobe
- Fully Enclosed Bathroom



2000 Flair Standard Features

EXTERIOR AUTOMOTIVE

Tinted Windshield
Undercoating
Stainless Steel Wheel Simulators
Valve Extenders
Steel Surface on Bulkhead
Trailer Hitch with 4-Point Electrical Hook-up
Halogen Headlights
Under-Floor Spare Tire
Dual Battery Charge Control
Single Motor Windshield Wipers with Wet Arm

INTERIOR AUTOMOTIVE

Intermittent Wiper Control
Double Swivel Sun Visors with Map Pockets
Engine Cover Convenience Tray
Cruise Control
Radio with Cassette AM/FM/MX—Electronic Tuning
Tilt Steering Wheel
Auxiliary Start Circuit
Battery Disconnect System
Auto A/C Heater Combo
Battery Powered Radio Switch—Main/Auxiliary
Driver/Passenger Side Magazine Rack
Driver/Passenger Captain's Chairs with Reclining Back/Slide Controls
3-Point Seat Belts on Driver/Passenger Seats

PLATFORM CONSTRUCTION

Basement Floor Configuration
Heated Water & Holding Tank Compartments
Carpeted, Galvanized Luggage Compartments
Steel Truss System

ELECTRICAL

Patio Receptacle in Luggage Compartment
120V/12V AC/DC Converter Central Electrical Panel with Charger
Water Pump Switch
4.0kW Onan® Generator
30-amp Service
Dual 6V/Deep-Cycle 218 amp House Batteries
VCR Ready
Rear TV Receptacle

APPLIANCES

20" Panasonic® TV in Front Overhead
Smoke Detector
LP Detector
CO Detector
Furnace 35M BTU
6-Gallon Quick Recovery Water Heater with D.S.I.
16" 3-Burner, High-Output Range with Oven
Light/Power Range Hood & Monitor Panel
Folding Range Cover
Single A/C with Solar Panel
Water Heater Bypass
Marine Toilet
1-cu.ft. Microwave with Electric Touch Pad
6-cu.ft. Dometic® Double Door Refrigerator
Single-Lever Galley Faucet
Demand Water Pump with Filter
Power Bath Vent
TV Antenna
Video Control Box
Fire Extinguisher
Rear Speakers in Bedroom
Telephone Jack
12V Jack

INTERIOR

3 Interior Decors
Skylight in Tub/Shower
Wall-to-Wall Carpet with Pad—Living & Bedroom
Vinyl Floor Covering—Galley & Bath
Wood Drawers (Dovetail Construction)
Roller Guide Drawer Slides with Transit Ship Locks
Brass Finished Cabinet Hardware
Seat Belts at Designated Seating Positions
Shades—Day/Night in Living, Night in Bedroom
Bedsprad
Innerspring Mattress
Slide-Out Dinette Bins with Locks
Cabinet Doors & Drawers
Window Covering
Bright Brass Bath Accessories
Entry Rail (Oak & Brass)
Raised Panel, Overhead Cabinet Doors
Adjustable Cabinet Shelves (Selected Cabinets)
Sink Cutting Board
Large, Double Stainless-Steel Sink

EXTERIOR

Fiberglass Front Cap
One-Piece, Swing-Down Engine Access Door
Fiberglass Front Grille
ABS Front/Rear Wheel Well Trim
Entry Door with Deadbolt Latch
Slider Windows Throughout
Flair Logo Badging
4-Point Manual Hydraulic Levelers (On Slide-Out Models)
Roof Ladder
Exterior Assist Handle
Exterior Rear View Mirrors
20' Sewer Hose
TV Antenna
Park Cable Receptacle
Awning Rail/Drip Molding (Both Sides)
Power Entry Step
Exterior Shower
Porch Light
3 Colorway Graphics to Match Decor
Lower Body Accent Panel

INTERIOR LIGHTING

Decor Lighting
Incandescent Lighting
Make-Up Lights in Bath

EXTERIOR STORAGE

Insulated Luggage Doors
Single-Paddle/Metal Latches
Continuous One-Piece Bulb Seals
Gas Lift Strut Supports—One Per Door
Steel Seal Frames
Carpeted Luggage Compartments

BODY STRUCTURE

Vacubond Upper/Lower Floor
Vacubond Walls with Smooth Exterior Fiberglass
Radiused Roof with Ducted A/C & Flat Interior
Rubber Roof
Steel Floor/Wall/Ceiling Framing
Power Platform II



Product information and photography included in this brochure were as accurate as possible at the time of publication. For the most current product information and changes, please visit our Website at www.fleetwood.com or contact your local Fleetwood dealer. Subsequent refinements may be evident in the actual product. Prices and specifications are subject to change without notice. All fuel and liquid capacities are approximate and dimensions are nominal. Fleetwood has designed its motor home brands to provide a variety of potential uses for its customers. Each unit features the optimum storage, fluid, seating and sleeping capabilities. Though the customer enjoys this potential, he/she also has the responsibility to select the proper combinations of loads without exceeding the chassis weight capacities.

New Flair Features For 2000

Our engineering may set us apart from the rest. But the things you'll notice most, when you and your family take a trip, are the top-of-the-line features. This year we have, once again, added to an already large list of features with the following:

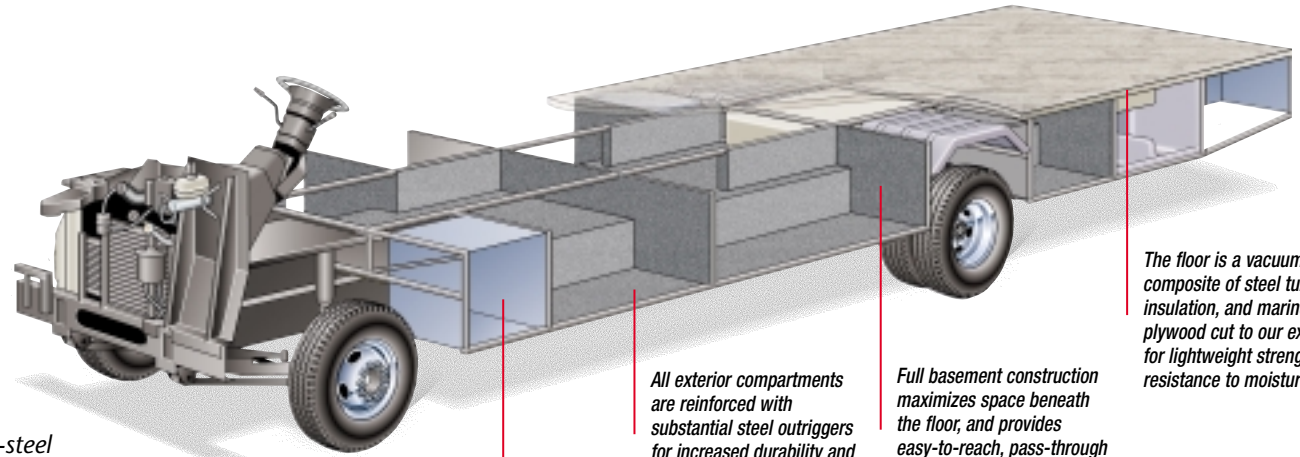
- **80" Bed in Most Models**
- **Dovetail Drawer Construction**
- **Newly Designed Exterior Graphics**
- **Range Cover—Expanded Counter Space**
- **Driver's Compartment Features a Convenient Storage Area for Maps and a Multi-Use Power Port**
- **Optional Compact Disc Player**

2000 Flair Options

						
EXTERIOR AUTOMOTIVE	25F	25Y	30H	31A	32V	34D
Workhorse Chassis 7.4L Vortec Engine	Opt	Opt	Opt	N/A	N/A	Opt
Ford Chassis 6.8L Engine	N/A	N/A	Opt	Opt	Opt	Opt
EXTERIOR	25F	25Y	30H	31A	32V	34D
Awning - USA	Opt	Opt	Opt	Opt	Opt	Opt
4-pt. Manual Hydraulic Levelers—Workhorse	Std	N/A	Opt	N/A	N/A	Std
4-pt. Manual Hydraulic Levelers—Ford	N/A	N/A	Opt	Std	Std	Std
Heated Remote Rear View Mirrors	Opt	Opt	Opt	Opt	Opt	Opt
Rear Vision Camera	Opt	Opt	Opt	Opt	Opt	Opt
INTERIOR	25F	25Y	30H	31A	32V	34D
SmartRoom®	N/A	N/A	Opt	N/A	Opt	N/A
Shower Curtain	Std	Std	N/A	N/A	N/A	Std
Folding Shower Door	N/A	N/A	Std	N/A	N/A	N/A
Shower Door with Bright Brass Frame	N/A	N/A	N/A	Std	Std	N/A
Molded Shower Pan ABS with Folding Door	N/A	N/A	Std	N/A	N/A	N/A
Molded Shower Pan ABS with Door	N/A	N/A	N/A	Std	Std	N/A
Molded Tub ABS with Shower Curtain	N/A	N/A	N/A	N/A	N/A	Std
Solid Divider Doors	Std	Std	Std	N/A	Std	Std
APPLIANCES	25F	25Y	30H	31A	32V	34D
Fantastic® Power Roof Vent	Opt	Opt	Opt	Opt	Opt	Opt
8-cu.ft. Dometic® Double Door Refrigerator—AC/Gas	Opt	Opt	Opt	Opt	Opt	Opt
Compact Disc Player	Opt	Opt	Opt	Opt	Opt	Opt
VCR/VHS	Opt	Opt	Opt	Opt	Opt	Opt
Satellite Dish	Opt	Opt	Opt	Opt	Opt	Opt
SLEEPING ACCOMMODATIONS (STANDARD)	25F	25Y	30H	31A	32V	34D
Sofa Bed	N/A	N/A	46"x 72"	46"x 72"	46"x 66"	46"x 66"
Dinette	40"x 74"	40"x 74"	40"x 74"	40"x 74"	40"x 74"	40"x 74"
Queen Bed	60"x 74"	N/A	60"x 80"	60"x 74"	60"x 80"	60"x 80"
Double Bed	N/A	53"x 74"	N/A	N/A	N/A	N/A
SLEEPING ACCOMMODATIONS (OPTIONAL)	25F	25Y	30H	31A	32V	34D
SmartRoom®	N/A	N/A	60"x 74"	N/A	60"x 74"	N/A
Sofa Bed with Pedestal Tables	46"x 72"	46"x 72"	N/A	N/A	N/A	N/A
Twin Beds with Nightstand	N/A	30"x 74"	30"x 74"	N/A	N/A	N/A
SLIDE-OUT	25F	25Y	30H	31A	32V	34D
Living Room—Dinette/Sofa	N/A	N/A	N/A	N/A	Std	Std
Galley—Galley/Sofa	N/A	N/A	N/A	Std	N/A	N/A
Bedroom Wardrobe—Closet/Organizer	N/A	N/A	N/A	N/A	Std	N/A
Bedroom—Bed	Std	N/A	N/A	Std	N/A	N/A
ELECTRICAL	25F	25Y	30H	31A	32V	34D
CSA 4.0kW Generator—Onan® Microlite	Opt	Opt	Opt	Opt	Opt	Opt
CSA ECC w/Dual A/C with 5.0kW Generator Upgrade	N/A	N/A	Opt	Opt	Opt	Opt
ECC w/Dual A/C with 5.0kW Generator Upgrade	N/A	N/A	Opt	Opt	Opt	Opt
CSA Package—Ford	N/A	N/A	Opt	Opt	Opt	Opt
CSA Package—Workhorse	Opt	Opt	Opt	N/A	N/A	Opt

The Power Platform II Makes The Difference

Flair's quality begins long before the features come on board. We begin by building on our exclusive Power Platform II, a unique truss design welded together using tubular steel that's durable, strong and dependable. The result is a quiet and nearly flawless ride, increased floor strength, and substantially more storage space below. An all-steel foundation further reduces stress loads on the sidewalls and minimizes chassis flex on uneven roads.



Drawing is for illustrative purpose only to highlight aspects of motor home construction. Actual motor home design depends on model and is subject to change.

Easy access compartments let you get to Flair's batteries.

All exterior compartments are reinforced with substantial steel outriggers for increased durability and years of cargo carrying.

Full basement construction maximizes space beneath the floor, and provides easy-to-reach, pass-through storage. Heated compartments enclose the water tanks.

The floor is a vacuum-bonded composite of steel tubing, foam insulation, and marine-grade plywood cut to our exact specs for lightweight strength and resistance to moisture.

2000 Flair Specifications

FORD CHASSIS	NEW FOR 2000					
	25F	25Y	30H	31A	32V	34D
Engine LD	N/A	N/A	6.8L	6.8L	6.8L	6.8L
Wheel Base	N/A	N/A	190"	208"	208"	208"
GVWR lbs/kgs (1)	N/A	N/A	18,000/8,165	20,500/9,299	20,500/9,299	20,500/9,299
Front GAWR lbs/kgs (2)	N/A	N/A	7,000/3,175	7,000/3,175	7,000/3,175	7,000/3,175
Rear GAWR lbs/kgs (2)	N/A	N/A	11,000/4,989	13,500/6,123	13,500/6,123	13,500/6,123
Base Weight lbs/kgs (3)	N/A	N/A	13,500/6,123	TBD	15,380/6,976	15,785/7,160
GCWR lbs/kgs (4)	N/A	N/A	23,000/10,433	25,500/11,567	25,500/11,567	25,500/11,567
Hitch Rating/Tongue Weight lbs	N/A	N/A	5,000/500	5,000/500	5,000/500	5,000/500
Hitch Rating/Tongue Weight kgs	N/A	N/A	2,268/227	2,268/227	2,268/227	2,268/227
Fuel Capacity gal/lbs	N/A	N/A	75/450	75/450	75/450	75/450
Fuel Capacity gal/kgs	N/A	N/A	75/204	75/204	75/204	75/204

WORKHORSE CHASSIS	NEW FOR 2000					
	25F	25Y	30H	31A	32V	34D
Engine CID	454	454	454	N/A	N/A	454
Wheel Base	158 1/2"	158 1/2"	190"	N/A	N/A	208"/247"
GVWR lbs/kgs (1)	14,800/6,713	14,800/6,713	16,500/7,484	N/A	N/A	20,000/9,072
Front GAWR lbs/kgs (2)	5,500/2,495	5,500/2,495	5,500/2,495	N/A	N/A	5,500/2,495
Rear GAWR lbs/kgs (2)	10,000/4,536	10,000/4,536	11,000/4,989	N/A	N/A	14,500/6,577
Base Weight lbs/kgs (3)	TBD/TBD	11,325/5,137	12,400/5,625	N/A	N/A	TBD
GCWR lbs/kgs (4)	18,300/8,301	18,300/8,301	20,000/9,072	N/A	N/A	21,000/9,525
Hitch Rating/Tongue Weight lbs	3,500/250	3,500/250	3,500/250	N/A	N/A	3,500/250
Hitch Rating/Tongue Weight kgs	1,588/113	1,588/113	1,588/113	N/A	N/A	1,588/113
Fuel Capacity gal/lbs	60/360	60/360	75/450	N/A	N/A	75/450
Fuel Capacity gal/kgs	60/163	60/163	75/204	N/A	N/A	75/204

DIMENSIONS	NEW FOR 2000					
	25F	25Y	30H	31A	32V	34D
Overall Length	25' 11"	26' 0"	31' 6"	32' 0"	33' 0"	35' 0"
Overall Height	11' 10"	11' 10"	11' 10"	11' 10"	11' 10"	11' 10"
Overall Width (maximum)	102"	102"	102"	102"	102"	102"
Interior Height (maximum)	79"	79"	79"	79"	79"	79"
Interior Width (maximum)	96"	96"	96"	96"	96"	96"

STORAGE CAPACITY (CU.FT.)	NEW FOR 2000					
	25F	25Y	30H	31A	32V	34D
Exterior (Ford/Workhorse) Est.	N/A/49	N/A/49	88/88	TBD/N/A	112/N/A	130/TBD

LIQUID CAPACITIES (GALLONS/LITERS)	NEW FOR 2000					
	25F	25Y	30H	31A	32V	34D
Fresh Water	75/284	100/379	75/284	80/303	80/303	80/303
Water Heater	6/23	6/23	6/23	6/23	6/23	6/23
Body-Waste Holding	50/189	50/189	50/189	50/189	50/189	50/189
Grey-Water Holding	45/170	50/189	50/189	50/189	50/189	50/189
Appliance LPG Tank (wc/see note)	25/95	25/95	25/95	25/95	25/95	25/95

Note: Tank manufacturer's listed water capacity (wc). Actual filled LP capacity is 80% of listing due to safety shutoff required on tank.

- GVWR (Gross Vehicle Weight Rating): Means the maximum permissible weight of this motor home. The GVWR is equal to or greater than the sum of the unloaded vehicle weight plus the net carrying capacity.
- GAWR (Gross Axle Weight Rating): Means the maximum permissible loaded weight a specific axle is designed to carry.
- Base Weight: Means the weight of the motor home without fuel, options, water, cargo, or passengers.
- GCWR (Gross Combination Weight Rating): Means the value specified by the motor home manufacturer as the maximum allowable loaded weight of this motor home with its towed trailer or towed vehicle. Towing and braking capacities may differ. Refer to Fleetwood and chassis manufacturer manuals for complete information.

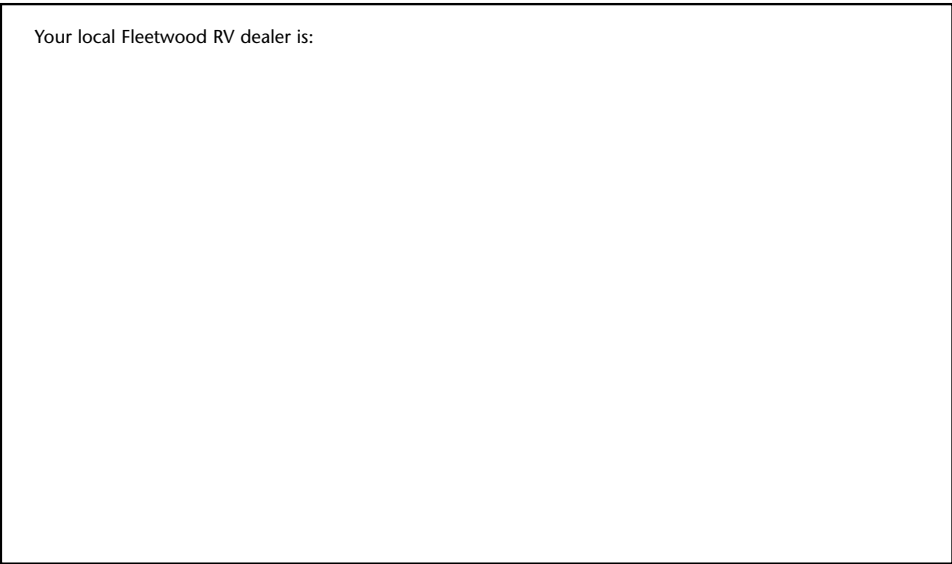
FLEETWOOD® RV

Fleetwood Enterprises, Inc.
RV Marketing
P.O. Box 7638
Riverside, CA 92513-7638



Flair
FLEETWOOD RV

Your local Fleetwood RV dealer is:



TO FIND A FLEETWOOD DEALER near you, call 24 hours a day at 1-800-444-4905 or visit our Website at www.fleetwood.com

FOR CUSTOMER ASSISTANCE, call toll free 24 hours a day at 1-800-322-8216, visit our Website, or you may write to Fleetwood Enterprises, Inc., P.O. Box 7638, Riverside, CA 92513-7638.

Product information and photography included in this brochure were as accurate as possible at the time of publication. For the most current product information and changes, please visit our Website at www.fleetwood.com or contact your local Fleetwood dealer. Subsequent refinements may be evident in the actual product. Prices and specifications are subject to change without notice. All fuel and liquid capacities are approximate and dimensions are nominal. Fleetwood has designed its motor home brands to provide a variety of potential uses for its customers. Each unit features the optimum storage, fluid, seating and sleeping capabilities. Though the customer enjoys this potential, he/she also has the responsibility to select the proper combinations of loads without exceeding the chassis weight capacities.

© 1999 Fleetwood Enterprises, Inc.

Inventory Control Number 170002/2nd Edition 12/99



This award certifies that Fleetwood has met Ford's rigid quality standards for modifying a Ford chassis.