

JAMBOREE SPORT® / SEARCHER®

2015

CLASS C GAS



JAMBOREE SPORT®
SEARCHER®

 FLEETWOOD RV

JAMBOREE SPORT 2015



BAY ISLAND FROST



TANGLED CHOCOLATE

TOP FEATURES

- Hardwood Cabinet Doors with Hidden Hinges
- LED TVs
- Bunk Bed and Breakfast Feature (Select Models)
- One-Piece Molded Front Cap
- High-Gloss Exterior Fiberglass (Select Locations)

- Full Basement Storage
- Flexsteel® Furniture
- Radius Roof with Ducted A/C (Select Models)
- PEX Plumbing System

OPTIONS

OPT. 079
FRONT
19" LED TV &
DVD PLAYER

OPT. 084
BEDROOM
19" LED TV

OPT. 093
EXTERIOR
ENTERTAINMENT
CENTER

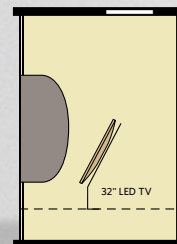
OPT. 097
BUNK AREA
19" LED TV

OPT. 157
DUAL PANEL
MONITORS

OPT. 351
CABOVER 32" LED TV
ENTERTAINMENT CENTER

WARD
W/LOWER DRESSER

OPT. 860/864
DINETTE W/ SWING DOWN BUNK
30" X 70" DINETTE / 28" X 70" BUNK



OPT. 167
32" LED TV
SWING-ARM HOME
ENTERTAINMENT CENTER

JAMBOREE SEARCHER 2015



STANDARD

TOP FEATURES

- Hardwood Cabinet Doors with Hidden Hinges
- LED TVs
- One-Piece Molded Front Cap
- High-Gloss Exterior Fiberglass

- Full Basement Storage
- Radius Roof with Ducted A/C (Select Models)
- PEX Plumbing System

OPTIONS

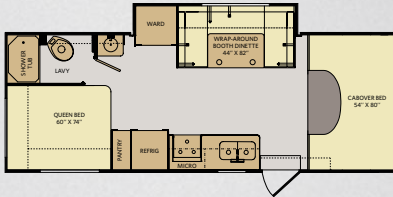
OPT. 078
FRONT
19" LED TV

OPT. 093
EXTERIOR
ENTERTAINMENT
CENTER

OPT. 113
3-BURNER
COOKTOP
W/OVEN

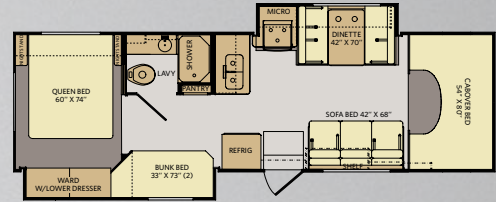
OPT. 160
FRONT 26"
LED TV

25G



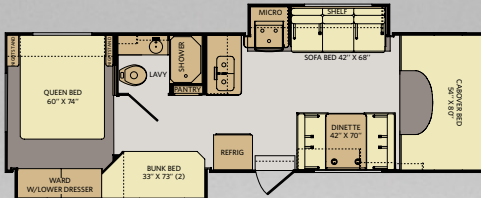
AVAILABLE OPTIONS: 079, 084, 093, 167, 351

31A



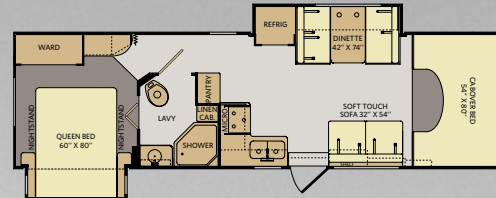
AVAILABLE OPTIONS: 079, 084, 093, 097, 157, 167, 351, 860/864

31D



AVAILABLE OPTIONS: 079, 084, 093, 097, 157, 167, 351, 860/864

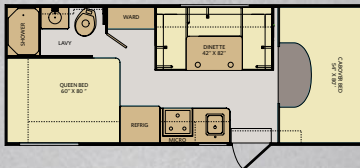
31M



AVAILABLE OPTIONS: 079, 084, 093, 167, 351

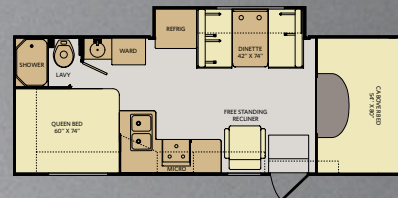
BAY ISLAND FROST						CABINETRY
SOFA	ACCENT	BEDSPREAD	COUNTERTOP	FLOORING	CARPET	BUTTERNUT
						CINNABAR
						SPICE
TANGLED CHOCOLATE						
SOFA	ACCENT	BEDSPREAD	COUNTERTOP	FLOORING	CARPET	

23B



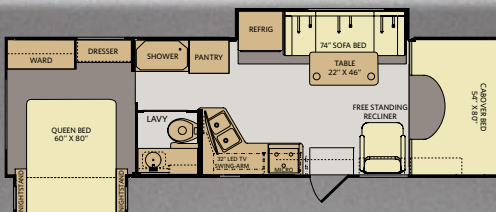
AVAILABLE OPTIONS: 078, 093

25K



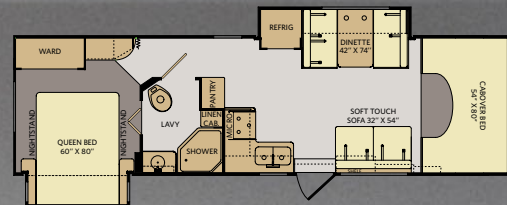
AVAILABLE OPTIONS: 078, 093, 113, 160

29A

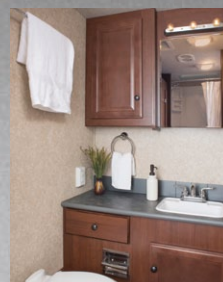


AVAILABLE OPTIONS: 093, 113

31M



AVAILABLE OPTIONS: 078, 093, 113, 160



JAMBOREE SEARCHER 29A WITH SPICE WOOD CABINETRY

JAMBOREE SPORT				
CHASSIS	E450			
MODELS	25G	31A	31D	31M
Wheelbase (inches)	176"	214"	214"	218"
GVWR (lbs) ¹	14,500	14,500	14,500	14,500
Front GAWR (lbs) ²	5,000	5,000	5,000	5,000
Rear GAWR (lbs) ²	9,500	9,500	9,500	9,500
GCWR (lbs) ³	19,500	19,500	19,500	19,500
Hitch Rating Weight (lbs) ^{†, ††}	5,000	5,000	5,000	5,000
Tongue Weight (lbs) [‡]	500	350	350	350
Fuel Capacity (gal)	55	55	55	55

JAMBOREE SEARCHER				
CHASSIS	E350	E350/E450	E450	
MODELS	23B	25K	29A	31M
Wheelbase (inches)	158"	176"	206"	218"
GVWR (lbs) ¹	12,500	12,500/14,500	14,500	14,500
Front GAWR (lbs) ²	5,000	5,000	5,000	5,000
Rear GAWR (lbs) ²	8,500	8,500/9,500	9,500	9,500
GCWR (lbs) ³	17,500	17,500/19,500	19,500	19,500
Hitch Rating Weight (lbs) ^{†, ††}	5,000	5,000	5,000	5,000
Tongue Weight (lbs) [‡]	500	500	350	350
Fuel Capacity (gal)	40	40/55	55	55

DIMENSIONS & CAPACITIES				
MODELS	25G	31A	31D	31M
Overall Length ⁴	26' 2.5"	31' 8.5"	31' 8.5"	32' 5.5"
Overall Height (with A/C)	11' 6"	11' 6"	11' 6"	11' 6"
Overall Width (maximum) ^{5, 6}	102"	102"	102"	102"
Interior Height (maximum)	82"	82"	82"	82"
Interior Width (maximum)	96"	96"	96"	96"
Patio Awning Size	17' 3"	10'	10'	14'
Interior Capacity (cu. ft.)	102	110	110	126
Exterior Capacity (cu. ft.)	100	104	104	102
Fresh Water Tank (gal)	50	60	60	60
Grey Water Tank (gal)	37	35	35	35
Black Water Tank (gal)	36	35	35	35
Propane Tank (gal) (WC) ⁷	14	14	14	14
Water Heater Tank (gal)	6	6	6	6

DIMENSIONS & CAPACITIES				
MODELS	23B	25K	29A	31M
Overall Length ⁴	24' 4.5"	26' 2.5"	30' 9.5"	32' 5.5"
Overall Height (with A/C)	11' 6"	11' 6"	11' 6"	11' 6"
Overall Width (maximum) ^{5, 6}	102"	102"	102"	102"
Interior Height (maximum)	82"	82"	82"	82"
Interior Width (maximum)	96"	96"	96"	96"
Patio Awning Width	11'	17' 3"	14'	14'
Interior Storage (cu. ft.)	79	87	134	126
Exterior Storage (cu. ft.)	88	100	98	102
Fresh Water Tank (gal)	50	50	60	60
Grey Water Tank (gal)	36	37	35	35
Black Water Tank (gal)	36	36	35	35
Propane Tank (gal) (WC) ⁷	14	14	14	14
Water Heater Tank (gal)	6	6	6	6

FORD® E350 CHASSIS (23B, 25K)

Engine: 5.4L V8
Transmission: 5-Speed Automatic w/Overdrive

Alternator: 120 Amp
Torque: 350 lb-ft @ 3,250 RPM
Horsepower: 255HP

FORD® E450 CHASSIS

Engine: 6.8L Triton V10
Transmission: 5-Speed Automatic w/Overdrive

Alternator: 120 Amp
Torque: 420 lb-ft @ 3,250 RPM
Horsepower: 305HP



JAMBOREE SPORT 31M SHOWN IN BAY ISLAND FROST DÉCOR WITH CINNABAR WOOD CABINERY

Addendums

- GVWR (Gross Vehicle Weight Rating) is the maximum permissible weight of this fully loaded motorhome. The GVWR is equal to or greater than the sum of the (UVW) unloaded vehicle weight plus the (OCCC) occupant cargo-carrying capacity¹.
- GAWR (Gross Axle Weight Rating) is the maximum permissible loaded weight a specific axle is designed to carry.
- GCWR (Gross Combined Weight Rating) is the value specified by the motorhome manufacturer as the maximum allowable loaded weight of this motorhome with its towed vehicle. Towing and braking capacities may be different. Refer to Fleetwood and chassis manufacturer's manuals for complete information.
- Length measured from front bumper to rear bumper (excludes accessories).
- Excludes safety equipment and awnings.
- Motorhomes feature a body width over 96" which will restrict your access to certain roads. Before purchasing, you should research any state and/or province road laws which may affect your usage.
- Tank manufacturer's listed water capacity (WC). Actual propane capacity is 80% of water listing as required by the safety code.

[†] The chassis manufacturer recommends the installation of a supplemental brake control system to activate the brakes on the vehicle or trailer you are towing. Hitch receiver ratings expressed are maximum for the hitch receiver installed and may require the purchase of additional equipment that is dependent on the weight of the towed load. Consult with hitch receiver manufacturer for further information.

* UVW and OCCC are found on the label containing the federal certification tag in each RV.

^{††} The Minimum Towable Load of this vehicle is the available weight capacity, up to GCWR, when the coach is fully loaded to maximum GVWR. However, if the coach is loaded to something less than maximum GVWR, that extra available weight capacity can be added to your Towable Load. For example, if your coach is loaded to 1000lbs less than maximum GVWR, your Towable Load increases accordingly. Do not exceed the hitch rating weight, GVWR or GCWR.

IMPORTANT—PLEASE READ

Product information, photography and illustrations included in this publication were as accurate as possible at the time of printing. For further product information and changes, please visit our website at www.fleetwoodrv.com or contact your local Fleetwood RV dealer. Prices, materials, design and specifications are subject to change without notice. All weights, fuel, liquid capacities and dimensions are approximate. Fleetwood RV has designed its recreational vehicles to provide a variety of uses for customers. Each vehicle features optimal seating, sleeping, storage and fluid capacities. The user is responsible for selecting the proper combination of loads (i.e., occupants, equipment, fluids, cargo, etc.) to ensure that the vehicle's capacities are not exceeded.

CONTACT US

To locate a dealer near you, visit our website at www.fleetwoodrv.com or call 1-800-322-8216. We can also be contacted at Fleetwood RV Customer Relations, P.O. Box 1007, Decatur, IN 46733.

** All 2015 Fleetwood RV motorhomes include a 1-year emergency roadside assistance membership. For complete info, see your Fleetwood RV dealer.

©2014 Allied Recreation Group Inc. Printed in USA. Inventory Control Number JASP_JAS15B2, 09/14. Model Year 2015, Second Edition.

FleetwoodRV.com



ALLIED RECREATION GROUP

