

2010

# PROVIDENCE<sup>®</sup>

CLASS A DIESEL

*If the world is your oyster,  
you've just found your pearl.*

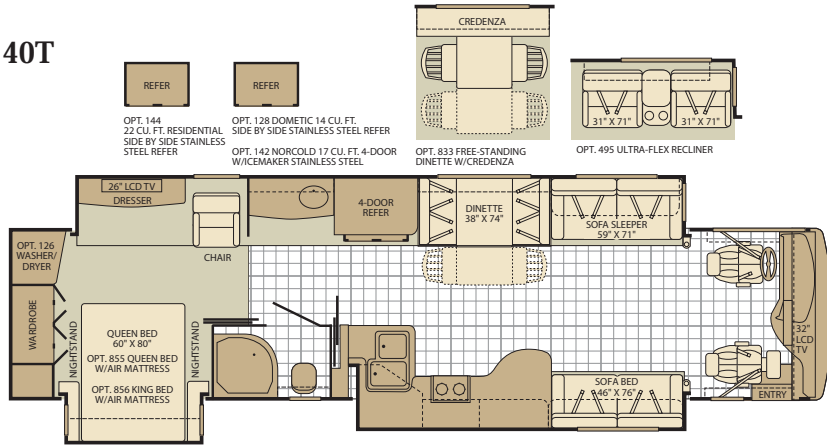


2010 PROVIDENCE

 **FLEETWOOD RV**

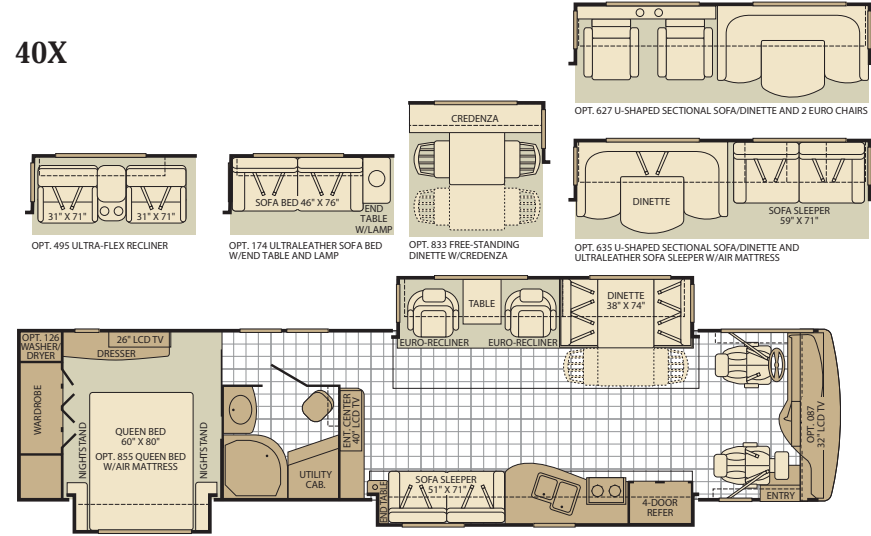
# PROVIDENCE FLOOR PLANS

40T



Interior Storage Capacity: 197 cu. ft.  
Exterior Storage Capacity: 242 cu. ft.

40X

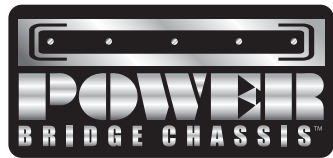


Interior Storage Capacity: 195 cu. ft.  
Exterior Storage Capacity: 242 cu. ft.

Seatbelt configuration may vary depending on options chosen.

## Power Bridge Chassis™. Part Hercules, part Einstein. All yours.

It's strong. It's smart. And it's here to change the way you travel. Created with your every need in mind, the all-new Power Bridge Chassis brings you sleek engineering, a smooth ride and convenience like you've never imagined. Feast your eyes on storage compartments so big, you'll never have to unpack. Experience balance and handling so incredible, you'll never want the trip to end. With so many surprises built-in to every nook and cranny, it's the soul of the ultimate RV. Harness the power.

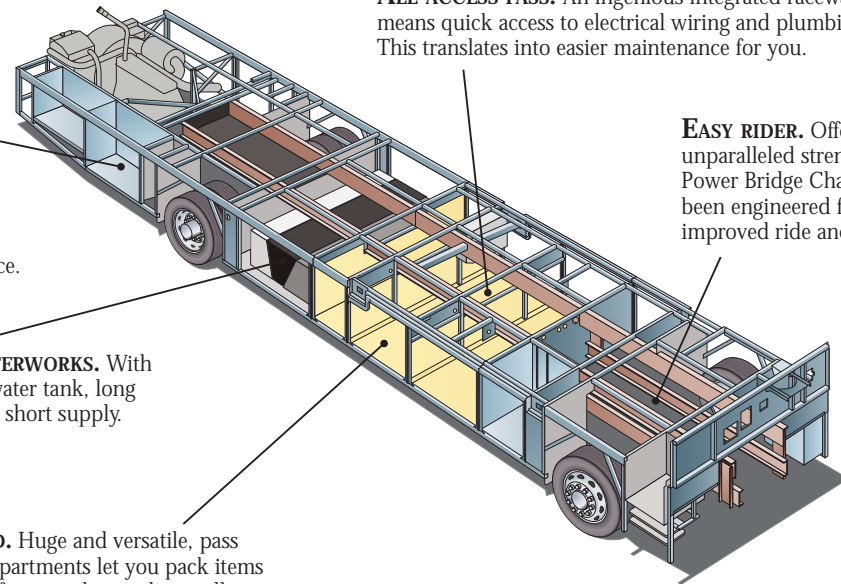


Drawings are for illustrative purposes only to highlight aspects of motor home construction. Actual motor home design depends on model and is subject to change.

**WASTE NOT, WANT NOT.**  
The Power Bridge Chassis is more than just a well-oiled machine. Every available inch is configured to maximize your storage capacity – so you'll never want for extra space.

**TURN ON THE WATERWORKS.** With a super-sized fresh water tank, long showers are never in short supply.

**OPEN AS THE ROAD.** Huge and versatile, pass through storage compartments let you pack items side to side, back to front, and even diagonally.



**ALL ACCESS PASS.** An ingenious integrated raceway means quick access to electrical wiring and plumbing. This translates into easier maintenance for you.

**EASY RIDER.** Offering unparalleled strength, the Power Bridge Chassis has been engineered for an improved ride and handling.

# PROVIDENCE REATURES AND OPTIONS

## STANDARD FEATURES

### INTERIOR

- 20,000/30,000 Btu Dual Furnaces
- 84" Interior Ceiling Height
- Complete TuffPEX Plumbing System
- Crown Molding w/Decorative Corner Caps
- Deluxe Day/Night Roller Blinds
- Deluxe Roller Bearing, Full Extension Drawer Guides & Transit-Ship Locks
- Demand Water Pump w/Filter
- Dual Roof Mounted, High Efficiency A/C w/Heat Pumps, Chill Grill w/Solar Panel & on Front A/C
- Solid Wood Face Frame Cabinets
- Hardwood Cabinet Doors/Drawers
- Plush Wall-to-Wall Carpet w/Carpet Pad
- Solid Surface Countertops and Sink Covers
- Vinyl Padded Ceiling
- Wall Switches (Includes Switches for Ceiling Lights & Vents)
- Water Heater Bypass
- Whole Coach Water Filtration System
- Wood Finish Return Air Intake for Furnace
- 16 Gallon Output Water Heater
- Central Vacuum System

### DRIVER CONVENIENCE

- Adjustable 3 Point Seat Belts at Driver & Front Passenger Seats (with adjustable shoulder straps)
- Clarion® AM/FM/CD Stereo w/Navigation, Sirius Satellite Radio® Ready
- Color Back-Up Monitor w/Side Cameras Integrated in Mirrors
- Auxiliary Start Circuit
- Backlit Switches & Gauges
- Battery Disconnect System
- CB Radio Ready
- Cruise Control
- Driver/Passenger Powered Side Shades
- Driver/Front Passenger Ultraleather™ Captain's Chairs w/Reclining Back/Slide Controls/Power/Heated/Adjustable Arms
- Denso® High-Output Auto A/C Heater Combo
- Passenger Armrest w/Integrated Magazine Rack
- Passenger Seat w/Power Footrest & Adjustable Armrest
- Power Driver/Front Passenger Sun Visors
- Radio Switch Main/Auxiliary Power
- Soft Surface Automotive Dash
- Smart Wheel with Tilt/Telescoping Steering Wheel

### GALLEY

- 1.4 cu.ft. Convection Microwave Oven w/Stainless Steel Front
- Dometic® 12 cu.ft. 4 Door Stainless Steel Refrigerator w/Ice Maker and Water Dispenser
- 2 Burner, High-Output Electric Flat Panel Cook Top
- Adjustable Cabinet Shelves (Select Cabinets)
- Fan-Tastic® Power Roof Vent w/Wall Switch

- Full 18x18 Tile From Entry to Bedroom
- Large, Double Stainless Steel Sink
- Single Lever Galley Faucet w/Pullout Sprayer
- Six Person Pull-Out Dinette Table (Select Models)
- Slide-Out Dinette Bins w/Latches
- Soap & Lotion Dispensers
- Under Galley Shelving & Wastebasket
- Window Over Sink

### LIVING ROOM

- Sony® 32" LCD HDTV (40" 40X Model)
- DSS/Mobil Auto Tracking Satellite Dish (Covered)
- Sony® DVD Home Theater Sound System w/Hidden Surround Sound Speakers
- Full 18 x 18 Tile from Entry to Bedroom
- Flexsteel® Residential Seat Styling
- TV Antenna w/Signal Booster
- Ultraleather™ Sofa Bed (40T)
- Ultraleather™ Sofa Sleeper
- Ultraleather™ Love Seat

### BEDROOM

- Bedspread w/Decor Pillows
- Cabinet Storage Above the Bed
- Coffe Ceiling
- Mirrored Wardrobe Doors
- Remote Generator Start
- Restonic® Deluxe Pillow Top Innerspring Mattress
- Ventilated Rear Wardrobe w/Cedar Lining, Carpeted Floor & Wire Organizer
- Wardrobe Lighting
- Bedroom Entertainment Center w/Samsung® 26" LCD HDTV

### BATHROOM

- Cabinet Toe Kicks
- Fan-Tastic® Power Roof Vent w/Wall Switch
- Hardwood Bath Door/Trims
- Lighted Assist Handle
- Molded Shower Enclosure w/Skylight
- Porcelain Toilet w/Water Saver
- Stainless Steel Sink

### SAFETY/CONVENIENCE

- Carbon Monoxide Detector/Alarm
- Energy Management System (EMS) w/Soft Start
- Fire Extinguisher
- Multiple Seatbelt Locations
- Propane Detector/Alarm
- Smoke Detector/Alarm
- Neutral Loss Protection

### EXTERIOR

- Entertainment Center w/Sony® 32" LCD HDTV & High Output Stereo System
- Diamond Shield Clear Front Protective Mask
- 120V/12V AC/DC Converter
- 120V/12V Wire Raceways
- 2000 Watt Pure Sine Wave Inverter w/Remote
- 4 Point Automatic Levelers
- 50 Dual Leg Amp Service
- 8.0 kW Onan® Quiet Diesel Generator

- Awning Rail/Drip Molding (Both Sides)
- Dual Battery Charge Control
- Dual Pane Windows w/Screens
- Fiberglass Front Quarter Panels
- Fiberglass Front/Rear Caps w/High Mounted Taillights
- Fiberglass Wheel Well Trims
- Full-Body Paint
- Remote/Heated Rear View Mirrors
- Utility Compartment w/Exterior Shower
- Water Pump Switch (Multiple Locations)
- Weather Pro Power Awnings (Patio Awning Includes Wind Sensor)
- Front & Mid Coach Docking Lights

### AUTOMOTIVE

- 10,000 lb. Weight Distributing Hitch Receiver w/7 Pin Electrical Hook-Up†
- 360HP Cummins® ISC 8.3L Engine
- Aluminum Wheels
- Dual Fuel Fill (One on Each Side)
- Fog Lamps
- Spartan® Chassis
- Large One-Piece Bonded-in Windshield
- Mud Flaps
- Color Rear & Side Vision Cameras w/Monitor in Radio
- Single Motor Diesel Equipment Windshield Wipers w/Wet Arm
- Tire Valve Extenders
- Underhood Utility Light
- Chrome Spotlight w/Remote Control

### SAFETY/CONVENIENCE

- Automatic Generator Start System
- 4 Wheel ABS Air Brakes
- 20' Sewer Hose
- Automotive Safety Glass
- Central Electrical Panel
- Daytime Running Lights
- Doorside Patio Receptacle
- Entry Door w/Screen Door & Deadbolt Lock
- Four 6V/Deep Cycle House Batteries
- Six w/Residential Refrigerator Option w/Additional Inverter
- Keyless Entry Remote
- Lighted Entry Assist Handle
- Park Cable Receptacle
- Dual Porch Lights (Doorside)
- Power Entry Step
- Roof Ladder
- Toilet Tank San-T-Flush™ System
- Touch Sensor Tank Monitoring System

### STORAGE

- Continuous One-Piece Compartment Bulb Seal
- Hidden, Stainless Steel Latch Rods
- Insulated Aluminum Luggage Doors w/Single Paddle Metal Latches & Stainless Steel Hinges
- Lighted Luggage Compartments

- Pass Through Storage
- Side Swinging Luggage Doors

### BODY STRUCTURE

- Aluminum Interlocking Floor/Wall/Ceiling Framing
- Color Coordinated Royal Tuff-Ply Roof
- Heated Water & Holding Tank Compartments
- Royal Tuff-Ply Radius Roof w/Ducted A/C
- Vacu-bond® Upper/Lower Floors
- Full-Wall Slide (Patent Pending)
- Power Bridge Chassis™ (Fleetwood Exclusive)

## OPTIONS

- CSA Package (Canadian Specs)\*\*
- Heat Pumps
- Stackable Washer/Dryer
- Washer/Dryer Combo

### GALLEY

- 14 cu.ft. Dometic® Stainless Steel Frost-Free Refrigerator
- Free-Standing Dinette w/Credenza
- GE® 22 cu.ft. Residential Refrigerator w/Two Additional Batteries & Additional Inverter (No Extra Charge)

### LIVING ROOM

- Sony® LCD HDTV in Front Overhead (40Q, 40X)
- Ultraleather™ Sofa Sleeper w/Air Mattress
- Leather Euro Recliner Free-Standing (Select Models)
- Desk

### BEDROOM

- Queen Adjustable Air Mattress
- King Adjustable Air Mattress (40Q, 40T)

### EXTERIOR

- Exterior Grill and Kitchenette
- Window Awning Package

## FLEETWOOD RV ADVANTAGES

- 360HP Cummins® ISC 8.3L Engine
- Vacu-bond® Walls w/Smooth High Gloss Exterior Tuff-Coat® Fiberglass
- Power Bridge Chassis™ (Fleetwood RV Exclusive)
- Large One-Piece Bonded-in Windshield
- Pass Through Storage
- Side Swinging Luggage Doors (Select Doors)
- Sony® 32" LCD HDTV in Living Room, Sony® 26" LCD HDTV in Bedroom
- Sony® Surround Sound DVD/AM/FM System
- Deluxe Roller Bearing, Full Extension Drawer Guides
- 84" Interior Ceiling Height

\*\*CSA standards may require substitution or deletion to achieve conformance.

# PROVIDENCE WEIGHTS AND MEASUREMENTS

## SPARTAN® CHASSIS

MODELS	40T	40X
Engine Displacement (Liters)	8.3	8.3
Wheelbase (Inches)	276"	276"
GVWR (lbs) <sup>1</sup>	32,000	32,000
Front GAWR (lbs) <sup>2</sup>	12,000	12,000
Rear GAWR (lbs) <sup>2</sup>	20,000	20,000
GCWR (lbs) <sup>3</sup>	42,000	42,000
Hitch Rating Weight (lbs) <sup>†</sup>	10,000	10,000
Tongue Weight (lbs) <sup>†</sup>	1,000	1,000
Fuel Capacity (gal)	100	100

### Liquid Weight Reference:

Water (gal) = (8.3 lbs/3.8 kgs) Fuel (gal) = (7.1 lbs/3.2 kgs) Propane (gal) = (4.2 lbs/1.9 kgs)

### Metric Conversion:

Multiply pounds x 0.453 to obtain kilograms. Multiply gallons x 3.785 to obtain liters.

Multiply liters x 61 to obtain cubic inches.

## DIMENSIONS & CAPACITIES

MODELS	40T	40X
Overall Length <sup>4</sup>	41' 6"	41' 6"
Overall Height (with A/C)	12' 10"	12' 10"
Overall Width (maximum) <sup>5,6</sup>	102"	102"
Interior Height (maximum)	84"	84"
Interior Width (maximum)	96"	96"
Fresh Water Holding Tank (gal)	100	100
Grey Water Holding Tank (gal)	75	75
Black Water Holding Tank (gal)	50	50
Appliance Propane Tank (gal) (WC) <sup>7</sup>	37.5	37.5
Water Heater Tank (gal)	10	10

**Model:** Spartan®

**Engine:** Cummins® ISC 8.3L

**Transmission:** Allison® 3000MH 6-Speed w/Electronic Shifter

**Alternator:** 170 Amp Leece Neville®

**Torque:** 1050 lbs-ft

**Horsepower:** 360HP

- GVWR (Gross Vehicle Weight Rating) is the maximum permissible weight of this fully loaded motor home. The GVWR is equal to or greater than the sum of the (UVW) unloaded vehicle weight plus the (OCCC) occupant cargo carrying capacity\*.
  - GAWR (Gross Axle Weight Rating) is the maximum permissible loaded weight a specific axle is designed to carry.
  - GCWR (Gross Combined Weight Rating) is the value specified by the motor home manufacturer as the maximum allowable loaded weight of this motor home with its towed vehicle. Towing and braking capacities may be different. Refer to Fleetwood and chassis manufacturer's manuals for complete information.
  - Length measured from front bumper to rear bumper (excludes accessories).
  - Excludes safety equipment and awnings.
  - Motor homes feature a body-width over 96" which will restrict your access to certain roads. Before purchasing, you should research any state and/or province road laws which may affect your usage.
  - Tank manufacturer's listed water capacity (WC). Actual propane capacity is 80% of water listing as required by the safety code.
- † The chassis manufacturer recommends the installation of a supplemental brake control system to activate the brakes on the vehicle or trailer you are towing. Hitch receiver ratings expressed are maximum for the hitch receiver installed and may require the purchase of additional equipment that is dependent on the weight of the towed load. Consult with hitch receiver manufacturer for further information.
- \* UVW and OCCC are found on the label containing the federal certification tag in each RV.

**IMPORTANT — PLEASE READ:** Product information, photography and illustrations included in this publication were as accurate as possible at the time of printing. For further product information and changes, please visit our website at [www.fleetwoodrv.com](http://www.fleetwoodrv.com) or contact your local Fleetwood dealer. Prices, materials, design and specifications are subject to change without notice. All weights, fuel, liquid capacities and dimensions are approximate. Fleetwood has designed its recreational vehicles to provide a variety of uses for its customers. Each vehicle features optimal seating, sleeping, storage and fluid capacities. The user is responsible for selecting the proper combination of loads (i.e. occupants, equipment, fluids, cargo, etc.) to ensure that the vehicle's capacities are not exceeded.

\*For complete info see your Fleetwood RV dealer.

©2010. Fleetwood RV, Inc.

Printed in the USA. Inventory Control Number PRO10F1, 1/10.

Model Year 2010, First Edition.

