

FLEETWOOD.RV

Southwind[®]
BY **FLEETWOOD.RV**

1 9 9 9

HOME IS WHEREVER THE WIND TAKES YOU

At Fleetwood RV, we've been making America's favorite recreational vehicles for nearly 50 years. We've done it by building honest value, rugged dependability and peace of mind into every one of them. With its uniquely sophisticated design, Southwind is the perfect way to travel the world in style. Imagine waking to see the sun skipping across Matagorda Bay, sleeping in the shadow of Red Rocks, or walking to your favorite fishing hole. Of course, Southwind gives you more than the great outdoors. It gives you a great indoors, too. A galley equipped with name-brand appliances and Corian[®] countertops. The elegant touch of rich paneling and oak plank floors. A luxurious queen-size island bed and picture windows that make the master bedroom a dream come true. And with our new EZ Glide[™] Room Slide-out System, some models offer even more living space at the touch of a button. Plus, our EZ Store[™] Storage System moves with the slide-out room, so you have easy access to the storage area below. All of which makes Southwind the ultimate combination of substance and style. After all, just because you ride like the wind, doesn't mean you shouldn't live like a king.

1999 SOUTHWIND SPECIFICATIONS

Chevrolet Chassis	32V	34L	34N	35S	36T	36Z
Engine CID	N/A	454	N/A	454	454	454
Wheel Base	N/A	208	N/A	208	190	190
GVWR lbs ¹	N/A	16,500	N/A	20,000	20,000	20,000
GCWR lbs ²	N/A	20,000	N/A	21,000	21,000	21,000
GAWR (front) lbs ³	N/A	5,500	N/A	5,500	5,500	5,500
GAWR (rear) lbs ³ (incl. tag)	N/A	11,000	N/A	14,500	14,500	14,500
Hitch Rating/Tongue wt. lbs	N/A	3,500/250	N/A	3,500/250	3,500/250	3,500/250
Fuel Capacity (gal/lbs)	N/A	75/450	N/A	75/450	75/450	75/450

Ford Chassis	32V	34L	34N	35S	36T	36Z
Engine CID	415	415	415	415	415	415
Wheel Base	208	208	208	228	228	228
GVWR lbs ¹	20,500	20,500	20,500	20,500	20,500	20,500
GCWR lbs ²	25,500	25,500	25,500	25,500	25,500	25,500
GAWR (front) lbs ³	7,000	7,000	7,000	7,000	7,000	7,000
GAWR (rear) lbs ³ (incl. tag)	13,500	13,500	13,500	13,500	13,500	13,500
Hitch Rating/Tongue wt. lbs	5,000/500	5,000/500	5,000/500	5,000/500	5,000/500	5,000/500
Fuel Capacity (gal/lbs)	75/450	75/450	75/450	75/450	75/450	75/450

Dimensions	32V	34L	34N	35S	36T	36Z
Length	32' 7"	34' 7"	34' 9"	35' 7"	36' 7"	36' 7"
Height (w/roof A/C)	11'11"	11'11"	11'11"	11'11"	11'11"	11'11"
Width	102"	102"	102"	102"	102"	102"
Interior Height	79"	79"	79"	79"	79"	79"
Interior Width	96"	96"	96"	96"	96"	96"

Liquid Capacities (gallons)	32V	34L	34N	35S	36T	36Z
Fresh Water	60	80	80	60	70	70
Black Water Holding	42	42	42	42	42	42
Grey Water Holding	58	58	58	58	58	58
Appliance LPG Tank*	25	25	25	25	25	25

¹ GVWR (Gross Vehicle Weight Rating): Maximum permissible weight of this motor home. The GVWR is equal to or greater than the sum of the unloaded vehicle weight plus the net carrying capacity.

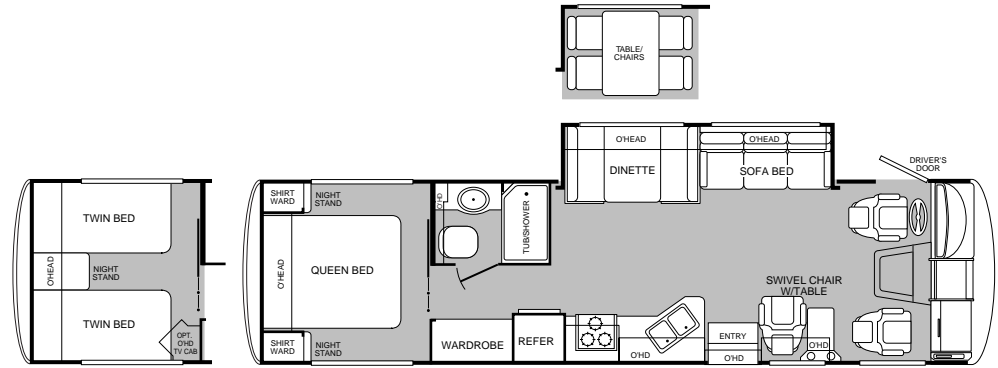
² GCWR (Gross Combination Weight Rating): Value specified by the motor home manufacturer as the maximum allowable loaded weight of this motor home with its towed trailer or towed vehicle.

³ GAWR (Gross Axle Weight Rating): Maximum permissible loaded weight a specific axle is designed to carry.

*Tank manufacturer's listed water capacity (WC) actual filled. LP capacity is 80% of listing due to safety shut off required on tank.

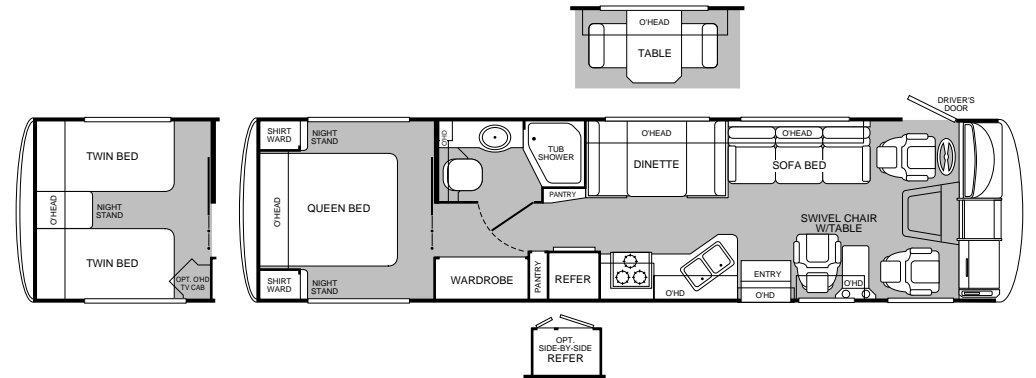
MODEL
32V

- Living room slide-out
- Fully enclosed bathroom
- Swivel chair w/table
- Dinette or opt'l table w/chairs
- Large tub/shower



MODEL
34L

- Dinette or opt'l table w/chairs
- Fully enclosed bathroom
- Swivel chair w/table
- Dual pantries
- Opt'l side-by-side refrigerator



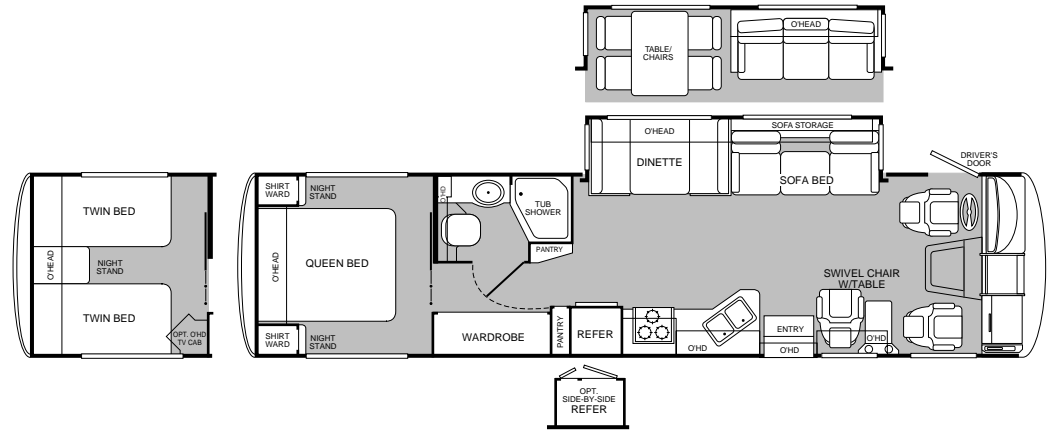
MODEL
34N

- Living room slide-out
- Opt'l bedroom slide-out
- Dinette w/opt'l table/chairs
- Swivel chair w/table
- Separate lavy and shower



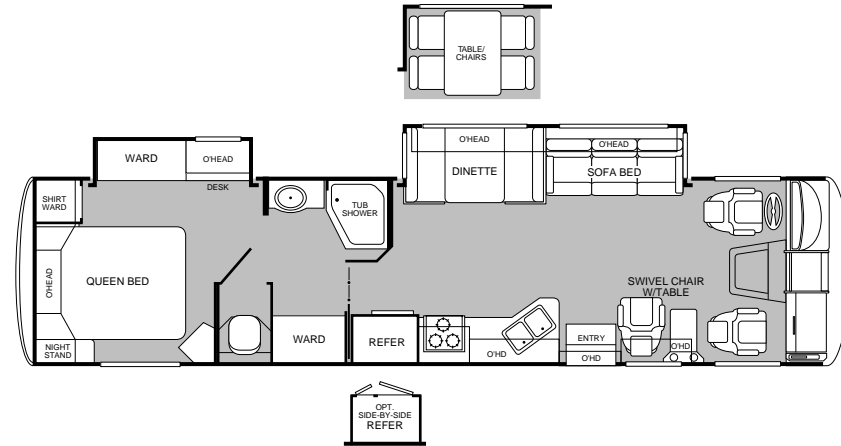
MODEL
35S

- Living room slide-out
- Dinette or opt'l table w/chairs
- Dual pantries
- Opt'l side-by-side refrigerator
- Opt'l twin beds



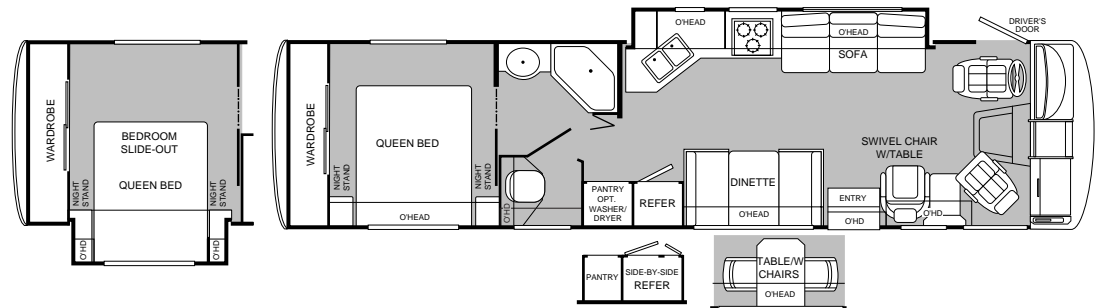
MODEL
36T

- Living room slide-out
- Ward slide-out
- Dinette or opt'l table w/chairs
- Private toilet
- Opt'l side-by-side refrigerator



MODEL
36Z

- Living room/galley slide-out
- Opt'l bedroom slide-out
- Queen bed
- Private toilet
- Opt'l side-by-side refrigerator



1999 SOUTHWIND FEATURES AND AVAILABLE EQUIPMENT

Exterior Automotive and Electrical, *Standard Equipment*

Large Curved Aerodynamic Windshield	Undercoating	Valve Extenders
Mud Flaps	Underhood Utility Light	Steel Surface on Firewall
Trailer Hitch w/4-point Electrical Hook-up	Halogen Headlights	Fog Lamps
Windshield Wipers w/Wet Arm	Rear Vision Camera	

Interior Automotive, *Standard Equipment*

Intermittent Wiper Control	Multi-position Sun Visors	Engine Cover Convenience Tray
Driver/Passenger Side Window Sun Shades	Driver's Door w/Window	Cruise Control
Engine Cover Low Profile	Reclining Captains Chairs	Auto A/C/Heater Combo
Auxiliary Start Circuit	Battery Disconnect	Tilt-up Instrument Panel
Radio Switch-Main/Aux.	Soft Surface Automotive Dash	Tilt Steering Wheel
Computer Work Station in Dash	Radio w/Cassette/MX Electronic Tuner	

Automotive, *Options*

	32V	34L	34N	35S	36T	36Z
4-point Hydraulic Levelers	Std	Opt	Std	Std	Std	Std

Exterior, *Standard Equipment*

Full Fiberglass Front-end Cap	Full Fiberglass Rear Cap	Fiberglass Rear Wheel Trim
Fiberglass Front Quarter Panels	Lower Body Accent Paint	Slider Windows
Aerodynamic Bus Styling	Single Paddle/Metal Latches	Front Grille
Radius Entry Door w/Deadbolt Latch	Gas Lift Strut Supports	Utility Compartment
Remote Ext. Rearview Mirror	Exterior Assist Handle	Roof Ladder
Awning Rail/Drip Molding (both sides)	Park Cable Receptacle	Power Entry Step
2 Colorway Graphics to Match Decor	Exterior Shower	Porch Light
Hidden Stainless Steel Latch Rods	Insulated Luggage Doors	Lights in Compartments
One-piece Swingdown Engine Access Door	Continuous One-piece Bulb Seal	Stainless Steel Wheel Simulators
Steel Seal Frames		

Exterior, *Options*

	32V	34L	34N	35S	36T	36Z
Pass-through Storage	N/A	Std	N/A	N/A	N/A	N/A
Hydraulic Levelers	Std	Opt	Std	Std	Std	Std
Awning	Opt	Opt	Opt	Opt	Opt	Opt
Satellite Dish	Opt	Opt	Opt	Opt	Opt	Opt

Interior, *Standard Equipment*

Woven Jacquard Feature Fabrics	2 Interior Decors	Skylight in Tub/Shower
Wall-to-wall Nylon Carpet	Adjustable Cabinet Shelves	Carpet Pad
Vinyl Floor Covering	Raised Panel Cabinet Doors	Solid Divider Doors
Radius Cornered Cabinetry	3-point Front Seat Belts	Wood Drawers
Brass Finished Cabinet Hardware	Reclining Bucket Seats	Miniblinds (metal)
Bedsread w/Decor Pillows	Innerspring Mattress	Crown Molding
Corian® Galley Countertops	Cabinet Doors & Drawers	Headboard
Plank Wood Flooring in Galley	Beveled Mirrors	Cedar Lining in Wardrobe
Slide-out Dinette Bins w/Locks	Window Coverings	Bath Door/Trims
Wood Trim Tabletop	Trash Basket in Galley	Molded Tub/Shower
Bright Brass Bath Accessories	Residential Seat Styling	Entry Rail (oak & brass)
Roller Guide Drawer Slides w/Trans. Ship Locks	Large Double Stainless Steel Sink	Sink Cutting Board

Interior, *Options*

	32V	34L	34N	35S	36T	36Z
Glass Shower Door w/Bright Brass Frame	N/A	Std	Std	Std	Std	Std
Folding Shower Door	Std	N/A	N/A	N/A	N/A	N/A
Compact Disc Player	Opt	Opt	Opt	Opt	Opt	Opt
Rear Television w/Remote	Opt	Opt	Opt	Opt	Opt	Opt
VCR	Opt	Opt	Opt	Opt	Opt	Opt
Lounge Recliner	Opt	N/A	Opt	Opt	Opt	Opt
Freestanding Dinette & Chairs	Opt	N/A	Opt	Opt	Opt	N/A
Twin Beds/Nightstands	Opt	Opt	N/A	Opt	N/A	N/A
Dinette Table w/Ext. Freestanding	N/A	Opt	N/A	N/A	N/A	Opt
TV Cabinet-Rear Bed	Opt	Opt	N/A	Opt	Opt	N/A
Leather Driver/Passenger w/Power Driver	Opt	Opt	Opt	Opt	Opt	Opt
Slide-out Pantry w/Transit Lock	Std	Std	N/A	Std	Std	N/A

1999 SOUTHWIND FEATURES AND AVAILABLE EQUIPMENT

Interior Lighting, *Standard Equipment*

Fluorescent Ceiling Light w/Dual Bulb	Wardrobe Lighting	Decor Lighting
Incandescent Lighting	Wall Sconces	Makeup Lights in Bathroom

Appliances, *Standard Equipment*

Front 20" TV In Overhead	6-gallon Quick Recovery Water Heater w/D.S.I.	
22" 3-burner, High-output Cooktop w/Oven	Light/Power Rangehood & Monitor Panel	
Folding Range Cover	Dual Roof High Efficiency A/C w/Solar Panel	
Water Heater Bypass	Marine Toilet	Microwave
8-cu. ft. Refrigerator (lg. dbl. doors)	Single Lever Galley Faucet	Water Filter w/Faucet
Demand Water Pump w/Filter	Power Bath Vent	Phone Jack
Fantastic® Power Roof Vent	Rear Speakers in Bedroom	

Appliances, *Options*

	32V	34L	34N	35S	36T	36Z
Furnace 20m BTU/20m BTU (dual)	N/A	Std	N/A	Std	N/A	Std
Furnace 34m BTU	Std	N/A	N/A	N/A	N/A	N/A
Double Door Refrigerator w/Ice Maker	Opt	Opt	Opt	Opt	Opt	Std
Convection Microwave	Opt	Opt	Opt	Opt	Opt	Std
Washer/Dryer	N/A	N/A	N/A	N/A	Opt	Opt

Electrical, *Standard Equipment*

Patio Receptacle (GFI)	120v/12v Wire Raceway	VCR Ready
Water Pump Switching	5.5kw Generator	30-amp Service
Dual 6v/Deep Cycle 217-amp House Battery	ECC Climate Control	Wall Switches
120v/12v AC/DC Convert. Central Elect. Panel w/Charger		

Electrical, *Options*

	32V	34L	34N	35S	36T	36Z
7.0kw Generator	Opt	Opt	Opt	Opt	Opt	Opt

Platform Construction and Body Structure, *Standard Equipment*

Basement Floor Configuration	Heated Water & Holding Tank Compartments	
Polyethylene Luggage Compartment Boxes	Steel Outriggers	Steel I-beams
Vacubond Walls w/Smooth Ext. Fiberglass	Box Vibration Isolators	Vacubond Lower Floor
Vacubond Upper Floor	Aluminum Wall/Ceiling Framing	Rubber Roof
Interlocking Aluminum Extrusions	Radius Roof w/Duct for A/C	

Slide-out, *Options/Standard Equipment*

	32V	34L	34N	35S	36T	36Z
Living Room	Std	N/A	Std	Std	Std	N/A
Galley	N/A	N/A	N/A	N/A	N/A	Std
Bedroom	N/A	N/A	Opt	N/A	N/A	Opt
Wardrobe	N/A	N/A	N/A	N/A	Std	N/A

Safety Equipment, *Standard Equipment*

Smoke Detector	Carbon Monoxide Detector	LPG Detector
Fire Extinguisher	Emergency Exit Window	

Sleeping Accommodations, *Std. Equipment*

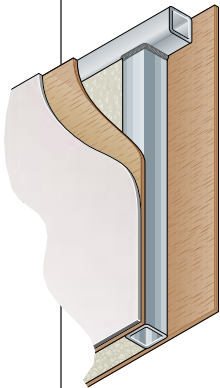
	32V	34L	34N	35S	36T	36Z
Easy Convertible Sofa 46" x 76"	N/A	Std	N/A	Std	N/A	Std
Sofa Sleeper 46" x 68"	Std	N/A	Std	N/A	Std	N/A
Dinette 39" x 74"	N/A	Std	N/A	N/A	N/A	Std
Dinette 41" x 74"	N/A	N/A	Std	Std	Std	N/A
Dinette 41" x 70"	Std	N/A	N/A	N/A	N/A	N/A
Queen Bed 60" x 75"	Std	Std	Std	Std	Std	Std

Sleeping Accommodations, *Options*

	32V	34L	34N	35S	36T	36Z
Freestanding Dinette	Opt	Opt	Opt	Opt	Opt	Opt
Twin Beds 39" x 79"	Opt	Opt	N/A	Opt	N/A	N/A
Sofa Sleeper 46" x 68"	N/A	N/A	N/A	Opt	N/A	N/A
Bedroom Slide-out 60" x 80"	N/A	N/A	Opt	N/A	N/A	Opt

WHEN THE DUST SETTLES, THERE'S NOT AN RV IN THE WORLD THAT'S TESTED LIKE A FLEETWOOD RV.

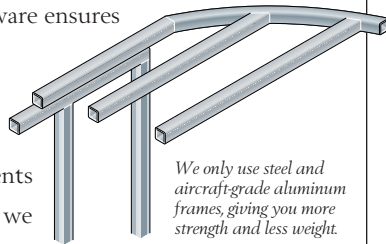
If anyone loves to tear an RV apart, it's us. Because at Fleetwood RV nothing's more important than your safety and comfort. While our improvements aren't all visible to the eye, we commit millions of dollars a year in product development and research to build what we believe are the finest RVs in the world.



Vacubond construction ensures that every roof, wall and floor is completely sealed.

It all starts with advanced computer analysis of new prototype designs. Once built, the prototypes undergo rigorous load bearing and weight distribution stress tests. Stringent load analysis software ensures improved reliability.

Then the relentless testing and re-testing of components begins. In a couple of weeks we can simulate years of real world



We only use steel and aircraft-grade aluminum frames, giving you more strength and less weight.

use. Slide-out mechanisms have to open and shut thousands of times without a complaint. Seat belts must withstand more than three-ton stress levels without a whimper. And doors have to endure tens of thousands of slammings without losing their composure.

At the end of the day, we've thrown just about anything and everything we can at our units, just to make sure we have the best designed and most thoroughly tested RVs in the world. Then we back them with a limited 1-year/3-year warranty supported by Fleetwood RV dealers throughout the U.S. and Canada. So you have what we believe to be the best-handling, safest, most comfortable RV anywhere.

Dear Friend,

Here at Fleetwood RV, we have over 200 people working on research and development. But we get our best ideas when we hit the road in our recreational vehicles. Talking to people like you and noticing for ourselves little ways to make RVing more comfortable, more convenient and more fun.



If I had two pieces of free advice to give a friend in the market for an RV, the first would be to get a Fleetwood RV. Not because we need to sell one more. Heck, we sell more than anyone else. But because I know we build the best product out there for the money.

Second, really think about your dealer. He has to be someone you trust for advice, service and accessories. Only the best get to be Fleetwood RV dealers in the first place. Then we work with them to continually improve customer satisfaction. That's why 9 out of 10 owners would recommend their Fleetwood RV to a friend and 9 out of 10 of them would also recommend their Fleetwood RV dealer.

I hope that helps. And I also hope I see you out there, somewhere in this beautiful world, enjoying your new Fleetwood RV while I'm out there doing the same.

John C. Crean

Chairman Emeritus and Founder
Fleetwood Enterprises, Inc.

Your local Fleetwood RV dealer is:

If your local dealer is not indicated, write to the address below, or call us toll free 24 hours a day at 1-800-444-4905. Or visit our Website at <http://www.fleetwood.com>

FLEETWOOD RV

America's Favorite Recreational Vehicles

Fleetwood Enterprises, Inc.
P.O. Box 2875, Van Nuys, CA 91404-2875

Product information and photography included in this brochure were as accurate as possible at the time of publication. Subsequent refinements may be evident in the actual product. Prices and specifications are subject to change without notice. All fuel and liquid capacities are approximate and dimensions are nominal. Fleetwood has designed its motor home brands to provide a variety of potential uses for its customers. Each unit features the optimum storage, fluid, seating and sleeping capabilities. Though the customer enjoys this potential, he/she also has the responsibility to select the proper combinations of loads without exceeding the chassis weight capacities.