

# Southwind

CLASS A GAS



Champagne Star



Blue Topaz



Fire Storm



Satin Steel



White Shadow



Café Milan

## INTERIOR DÉCORS

### Spa

LIVING/DINING ROOM



Dinette Cushions



Sofa



Ultraleather™  
Driver & Front  
Passenger  
Seats,  
Sofa (optional)

BEDROOM



Bedspread &  
Headboard



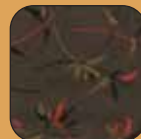
Accent Fabric



Throw Pillows

### Ebony

LIVING/DINING ROOM



Dinette Cushions



Sofa



Ultraleather™  
Driver & Front  
Passenger  
Seats,  
Sofa (optional)

BEDROOM



Bedspread &  
Headboard



Accent Fabric



Throw Pillows

### Blue Topaz

LIVING/DINING ROOM



Dinette Cushions



Sofa



Ultraleather™  
Driver & Front  
Passenger  
Seats,  
Sofa (optional)

BEDROOM



Bedspread &  
Headboard



Accent Fabric



Throw Pillows

Wood Finishes



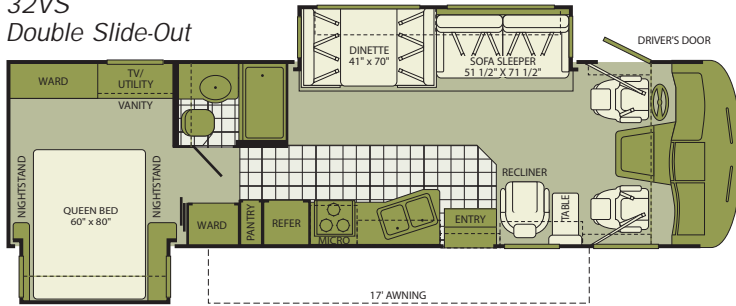
Symphony Cherry



Plantation Cherry

# FLOOR PLANS

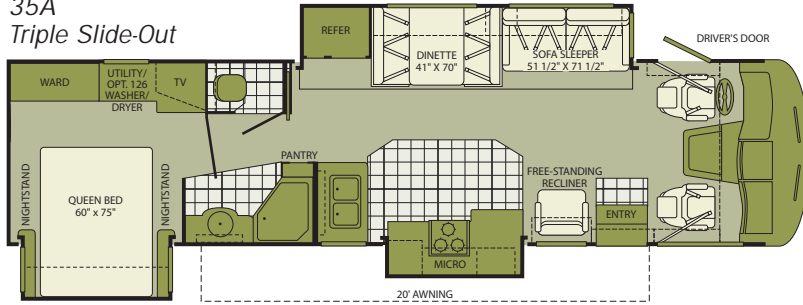
32VS  
Double Slide-Out



Interior Storage Capacity: 144 cu. ft.  
Exterior Storage Capacity: 112 cu. ft.

Available Options: 122, 149, 491, 700, 832, 833

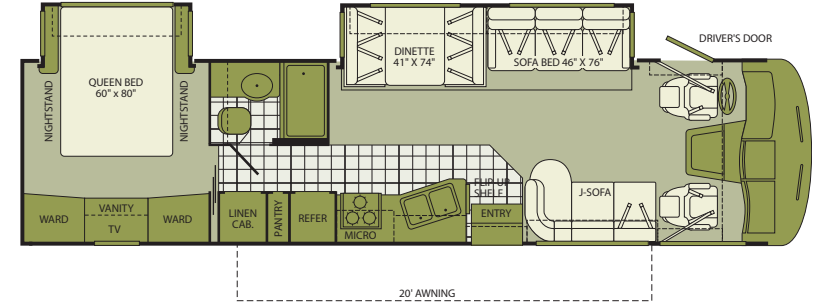
35A  
Triple Slide-Out



Interior Storage Capacity: 143 cu. ft.  
Exterior Storage Capacity: 108 cu. ft.

Available Options: 122, 126, 149, 491, 700, 832, 833

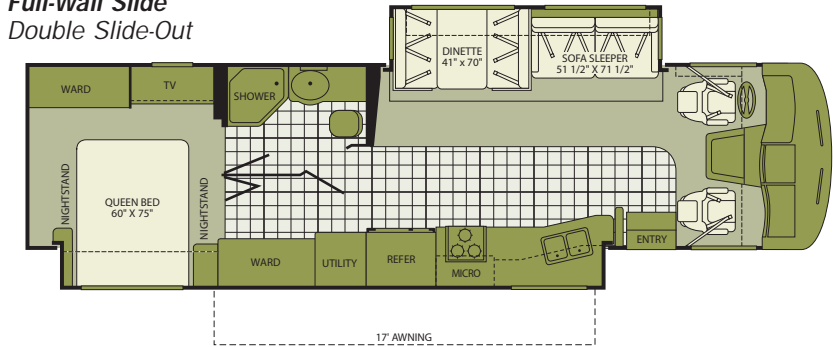
34G  
Double Slide-Out



Interior Storage Capacity: 163 cu. ft.  
Exterior Storage Capacity: 136 cu. ft.

Available Options: 122, 149, 700, 807, 832, 833, 852

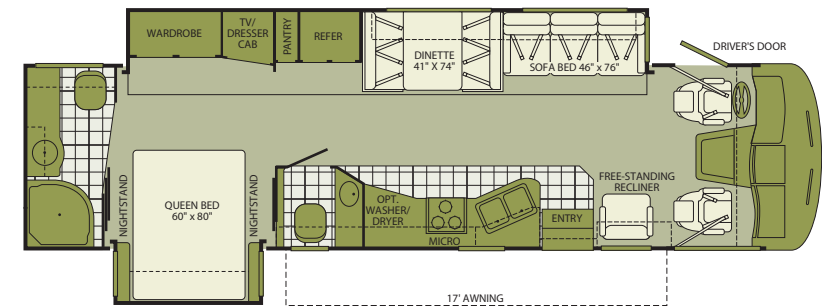
35J  
Full-Wall Slide  
Double Slide-Out



Interior Storage Capacity: 173 cu. ft.  
Exterior Storage Capacity: 87 cu. ft.

Available Options: 122, 126, 149, 631, 700, 832, 833, 852

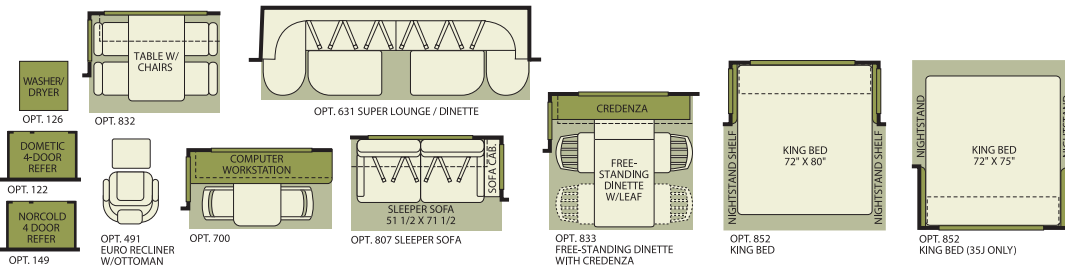
36D  
Full-Wall Slide  
Double Slide-Out



Interior Storage Capacity: 156 cu. ft.  
Exterior Storage Capacity: 105 cu. ft.

Available Options: 122, 126, 149, 491, 700, 807, 832, 833

# OPTIONS



Seatbelt configuration may vary depending on options chosen.

## STANDARD FEATURES

### INTERIOR

#### INTERIOR - THROUGHOUT

- 10 Gallon Quick Recovery Water Heater w/Direct Spark Ignition (Gas/Electric)
- 20,000/30,000 Btu Dual Furnaces (36D)
- 3 Interior Decors
- 34,000 Btu Furnace (32VS, 34G, 35A, & 35J)
- Beveled Mirrors
- Plantation Cherry Wood Grain or Symphony Cherry Wood Grain
- Complete TuffPEX Plumbing System
- Deluxe Roller Bearing, Full Extension Drawer Guides & Transit-Ship Locks
- Demand Water Pump w/Filter
- Dual 6V Deep Cycle House Batteries
- Dual Roof A/C High Efficiency w/Solar Panel and Chill Grills
- Telephone Jack In-Dash
- Vinyl Ceiling, Cushioned
- Water Heater Bypass
- Whole Coach Water Filtration System
- 7' Interior Ceiling Height
- Fluorescent Ceiling Lights w/Dual Bulbs & Wood Trim
- DVD Home Theater Sound System

#### DRIVER CONVENIENCE

- 3 Point Seat Belts at Driver & Front Passenger Seats
- AM/FM Radio w/CD Player, Satellite Radio Ready w/Auxiliary Inputs
- Auto A/C Heater Combo
- Auxiliary Start Circuit
- Computer Workstation In-Dash
- Cruise Control
- Dash Fans
- Double Swivel Sun Visors w/Map Pockets
- Power Front Windshield Shade
- Engine Cover Convenience Tray
- Intermittent Wiper Control
- Radio Switch Main/Auxiliary Power
- iPod Docking Station
- Tilt Steering Wheel
- Battery Disconnect System
- Driver/Front Passenger Ultraleather™ Captain's Chairs w/Power Driver Seat
- DSS Manual Lift Satellite Dish
- Driver's Door w/Power Window Lift

#### GALLEY

- 1.4 cu.ft. Microwave Oven
- 3 Burner, High Output Range w/Oven
- 8 cu.ft. Dometic® Double Door Refrigerator
- Brushed Nickel Finish Cabinet Hardware
- Double Bowl Stainless Steel Sink
- Fan-Tastic® Power Roof Vent
- Radius Corner Cabinetry
- Range Cover Flush Mount
- Single Lever Moen® Faucet w/Sprayer
- Sink Cover/Cutting Board

- Skylight
- Solid Surface Counter Tops
- Waste Basket
- Slide-Out Dinette Bins w/Latches

#### LIVING ROOM

- 26" LCD HDTV
- Day/Night Pleated Shades
- Free-Standing Lounge Recliner (N/A on 34G, Optional on 35J)
- Residential Seat Styling

#### BEDROOM

- LCD HDTV
- Bedspread w/Decor Pillows
- Headboard
- Pleated Shades
- Rear Speakers
- Restonic® Deluxe Pillow Top Innerspring Mattress
- Dual Pane Torque Windows
- Accessory Package (Hair Dryer, Vacuum & Flashlight)

#### BATHROOM

- Poreclain Lavy Sink
- Moen® Lavy Faucet
- Fan-Tastic® Power Roof Vent
- Make-Up Lights
- Molded Tub/Shower Enclosure
- Porcelain Toilet w/Water Saver
- Skylight in Tub/Shower
- Toilet Tank San-T-Flush™ System
- Vinyl Flooring

#### SAFETY/CONVENIENCE

- Carbon Monoxide Detector/Alarm
- Child Safety Tether
- New Wider Entry Door
- Entry Assist Handle
- Multiple Seatbelt Locations
- Propane Detector/Alarm
- Smoke Detector/Alarm
- 10 ABC Fire Extinguisher

#### EXTERIOR

##### EXTERIOR - THROUGHOUT

- 120V/12V AC/DC Converter Central Electrical Panel
- 6 Colorway Graphic Schemes
- 3 Way Water Pump Switch
- 5.5 kW Onan® MicroQuiet Generator
- 50 Amp Service
- Aluminum Tube Front Grill
- Awning Rail/Drip Molding (Both Sides)
- Dual Pane Windows w/Screens
- Dual Patio Receptacles
- Fiberglass Front/Rear Caps
- Full-Body Paint
- Halogen Headlights
- Heated Water & Holding Tank Compartments

- Large, Curved Aerodynamic One-Piece Bonded-In Windshield
- Mud Flaps
- Park Cable Receptacle
- Patio Awning
- Single Motor Windshield Wipers w/Wet Arm
- Slide Topper Awnings
- Steel Outriggers
- TV Antenna w/Signal Booster
- Molded Front Quarter Panels

#### AUTOMOTIVE

- 4 Point Hydraulic Automatic Levelers
- Trailer Hitch w/7 Pin Electrical Hook-Up†

#### SAFETY/CONVENIENCE

- Automotive Safety Glass
- Daytime Running Lights
- Entry Door w/Screen Door & Deadbolt Lock
- Hydraulic 4 Wheel Disk Brakes w/4 Wheel Anti-Lock Brakes
- Large, Heated Remote Rear View Mirrors
- Porch Light (Doorside)
- Power Entry Step
- Color LCD Rear Vision Camera w/One-Way Audio
- Roof Ladder
- Underhood Utility Lights
- Utility Compartment w/Exterior Shower
- Winterizing Pick-Up Tube
- Lighted Entry Assist Handle

#### STORAGE

- Continuous One-Piece Compartment Bulb Seal
- Gas Lift Strut Supports
- Side Swinging Luggage Doors (Select Locations)
- Lighted Luggage Compartments
- Pass Through Storage (Select Models)
- Rotomolded Polyethylene Luggage Compartments
- Steel Luggage Door Seal Frames

#### BODY STRUCTURE

- Aluminum Interlocking Floor/Wall/Ceiling Framing
- Basement Floor Configuration
- Power Platform® Construction (Fleetwood Exclusive)
- Royal Tuff-Ply Radius Roof w/Ducted A/C
- Vacu-bond® Upper/Lower Floors
- Vacu-bond® Walls w/Smooth, High Gloss Tuff-Coat® Exterior Fiberglass

## OPTIONS

#### INTERIOR

- Neutral Loss Protection
- 1200 Watt Inverter

#### DRIVER CONVENIENCE

- Auto-Locating Satellite Dish
- CB Radio Ready
- Sirius Satellite Radio® (6 Month Subscription Included)

#### GALLEY

- 4 Door Dometic® Refrigerator w/Ice Maker
- Convection Microwave Oven
- Dinette Table w/Free-Standing Chairs
- Dinette/Computer Workstation
- Norcold® 4 Door Refrigerator w/Ice Maker
- Free-Standing Dinette w/Credenza
- Washer/Dryer (Select Models)

#### LIVING ROOM

- Hide-A-Bed Sofa
- Leather Euro Recliner w/Ottoman (Select Floorplans)
- Sofa w/Footrest
- Ultraleather™ Sofa Bed
- Ultraleather™ Hide-A-Bed
- Ultraleather™ Lounge Recliner
- Ultraleather™ Sofa w/Footrest

#### BEDROOM

- King Bed Air Mattress (Select Models)
- Queen Bed Air Mattress (Select Models)

#### EXTERIOR

- Side View Camera System
- CSA Package (Canadian Specs)\*\*
- Dual A/C w/Heat Pump w/Solar Panel on Front A/C
- Diamond Shield Clear Front Protective Mask
- Electric Awning Weather Pro (32VS, 34G, 36D & 35J)
- Exterior Entertainment Center

#### AUTOMOTIVE

- Workhorse™ Chassis w/ 8.1L Vortec™ Engine
- Ford® Chassis w/6.8L Triton® V10 Engine

## FLEETWOOD ADVANTAGES

- Power Platform® Construction (Fleetwood Exclusive)
- Pass Through Storage
- Contemporary Styling and Decor, Interior and Exterior
- Multiple Floor Plans, Including Unique Full-Wall Slide Plans
- Up to 6,000 lbs. Towing Capacity†
- Side Swinging Luggage Doors (Select Locations)

\*\* CSA standards may require substitution or deletion to achieve conformance.

## WEIGHTS & MEASUREMENTS

### FORD® CHASSIS / WORKHORSE™ CHASSIS

| MODELS                                 | 32VS    | 34G     | 35A           | 35J     | 36D           |
|----------------------------------------|---------|---------|---------------|---------|---------------|
| Engine Displacement (Liters)           | 6.8/8.1 | 6.8/8.1 | 6.8/8.1       | 6.8/8.1 | 6.8/8.1       |
| Wheelbase (Inches)                     | 208"    | 228"    | 228"          | 228"    | 228"          |
| GVWR (lbs) <sup>1</sup>                | 22,000  | 22,000  | 22,000/24,000 | 22,000  | 22,000/24,000 |
| Front GAWR (lbs) <sup>2</sup>          | 7,500   | 7,500   | 7,500/9,000   | 7,500   | 7,500/9,000   |
| Rear GAWR (lbs) <sup>2</sup>           | 14,500  | 14,500  | 14,500/15,500 | 14,500  | 14,500/15,500 |
| GCWR (lbs) <sup>3</sup>                | 26,000  | 26,000  | 26,000/30,000 | 26,000  | 26,000/30,000 |
| Hitch Rating Weight (lbs) <sup>†</sup> | 5,000   | 5,000   | 5,000/6,000   | 5,000   | 5,000/6,000   |
| Tongue Weight (lbs) <sup>†</sup>       | 500     | 500     | 500/600       | 500     | 500/600       |
| Fuel Capacity (gal)                    | 75      | 75      | 75            | 75      | 75            |

### DIMENSIONS & CAPACITIES

| MODELS                                         | 32VS    | 34G     | 35A     | 35J     | 36D     |
|------------------------------------------------|---------|---------|---------|---------|---------|
| Overall Length <sup>4</sup>                    | 33' 5"  | 35' 11" | 36' 5"  | 36' 11" | 36' 5"  |
| Overall Height (with A/C)                      | 12' 10" | 12' 10" | 12' 10" | 12' 10" | 12' 10" |
| Overall Width (maximum) <sup>5, 6</sup>        | 102"    | 102"    | 102"    | 102"    | 102"    |
| Interior Height (maximum)                      | 84"     | 84"     | 84"     | 84"     | 84"     |
| Interior Width (maximum)                       | 96"     | 96"     | 96"     | 96"     | 96"     |
| Fresh Water Holding Tank (gal)                 | 80      | 80      | 80      | 80      | 80      |
| Grey Water Holding Tank (gal)                  | 58      | 58      | 58      | 58      | 58      |
| Black Water Holding Tank (gal)                 | 42      | 42      | 42      | 42      | 42      |
| Appliance Propane Tank (gal) (WC) <sup>7</sup> | 25      | 25      | 25      | 25      | 25      |
| Water Heater Tank (gal)                        | 10      | 10      | 10      | 10      | 10      |

**Liquid Weight Reference:** Water (gal) = (8.3 lbs/3.8kgs) Fuel (gal) = 6.1 lbs/2.8 kgs) Propane (gal) = (4.2 lbs/1.9 kgs)

**Metric Conversion:** Multiply pounds x 0.453 to obtain kilograms. Multiply gallons x 3.785 to obtain liters. Multiply liters x 61 to obtain cubic inches.

### CHASSIS

**Model:** Ford®/Workhorse™

**Engine:** 6.8L Triton V10/8.1L Vortec™ V8

**Transmission:** Ford®, 5-Speed Automatic w/Overdrive

Workhorse™, 6-Speed Automatic w/Overdrive

**Alternator Amps:** 130 Amp/145 Amp

**Torque:** 457 lb-ft @ 3250 RPM/455 lb-ft @3200 RPM

**Horsepower:** 362HP/340HP

- GVWR (Gross Vehicle Weight Rating) is the maximum permissible weight of this fully loaded motor home. The GVWR is equal to or greater than the sum of the (UVW) unloaded vehicle weight plus (OCCC) occupant and cargo carrying capacity\*.
- GAWR (Gross Axle Weight Rating) is the maximum permissible loaded weight a specific axle is designed to carry.
- GCWR (Gross Combined Weight Rating) is the value specified by the motor home manufacturer as the maximum allowable loaded weight of this motor home with its towed vehicle. Towing and braking capacities may be different. Refer to Fleetwood and chassis manufacturer's manuals for complete information.
- Length measured from front bumper to rear bumper (excludes accessories).
- Excludes safety equipment and awnings.
- Motor homes feature a body-width over 96" which will restrict your access to certain roads. Before purchasing, you should research any state and/or province road laws which may affect your usage.
- Tank manufacturer's listed water capacity (WC). Actual propane capacity is 80% of water listing as required by the safety code.

† The chassis manufacturer recommends the installation of a supplemental brake control system to activate the brakes on the vehicle or trailer you are towing. Hitch receiver ratings expressed are maximum for the hitch receiver installed and may require the purchase of additional equipment that is dependent on the weight of the towed load. Consult with hitch receiver manufacturer for further information.

N/A = not available at time of printing.

\*UVW and OCCC are found on the label containing the federal certification tag in each RV.

**IMPORTANT — PLEASE READ:** Product information, photography and illustrations included in this publication were as accurate as possible at the time of printing. For further product information and changes, please visit our website at [www.fleetwoodrv.com](http://www.fleetwoodrv.com) or contact your local Fleetwood dealer. Prices, materials, design and specifications are subject to change without notice. All weights, fuel, liquid capacities and dimensions are approximate. Fleetwood has designed its recreational vehicles to provide a variety of uses for its customers. Each vehicle features optimal seating, sleeping, storage and fluid capacities. The user is responsible for selecting the proper combination of loads (i.e. occupants, equipment, fluids, cargo, etc.) to ensure that the vehicle's capacities are not exceeded.