



THE SPIRIT OF ADVENTURE

It's the simple pleasures that make traveling worthwhile. With fresh, functional comfort, Southwind is ready for anything, which means there's always something to discover. Don't forget to pack your sense of adventure—in Southwind, the journey is as memorable as the destination.



▲ SOUTHWIND 32VS shown in Chocolate Bisque interior décor with Brown Sugar wood cabinetry



WHY BUY SOUTHWIND?

Contemporary Styling With its clean, modern style, Southwind's interior is spacious, comfortable, and feels like home.

Full-Body Paint Southwind projects a high-quality image with dazzling, full-body paint and striking exterior graphics.

Entertainment Centers With big LCD HDTVs in both the living room and the bedroom, your entertainment options are as wide open as the road.

Comfort and Convenience Camping in Southwind doesn't mean roughing it. You'll enjoy comfortable furniture, brand-name appliances and high-end components.

Power Platform® Construction Fleetwood's patented platform is not only super-strong, it provides an amazing amount of storage, including pass-through storage on select models.

2012 GRAPHICS AND DÉCOR

Southwind



Antique Frost



Morning Fog



Sierra Stream



Vapor Mist

Both inside and out, we offer a wide selection of colors, styles and finishes. From the moment you lay your eyes on a Fleetwood RV, the high-style graphics and décor collection welcome you with gracious beauty and contemporary design. We've paid attention to every detail. So wherever you are, you'll feel right at home.

| | CHESTNUT RAVEN | CHOCOLATE BISQUE | | CABINETRY |
|------------|----------------|------------------|-------------|-----------|
| SOFA | | | WARM HONEY | |
| ACCENT | | | | |
| BEDSPREAD | | | BROWN SUGAR | |
| COUNTERTOP | | | | |
| FLOORING | | | BROWN SUGAR | |
| CARPET | | | | |

STANDARD FEATURES AND OPTIONS

STANDARD FEATURES

INTERIOR THROUGHOUT

- 10-Gallon Quick Recovery Water Heater w/Direct Spark Ignition (Gas/Electric)
- 20,000/30,000 BTU Dual Furnaces (35J, 36D)
- 34,000 BTU Furnace (32VS)
- Complete PEX Plumbing System
- Deluxe Roller Bearing, Full-Extension Drawer Guides & Transit-Ship Locks
- Demand Water Pump w/Filter
- Dual Roof A/C High-Efficiency w/Solar Panel, Heat Pump and Chill Grills
- Vinyl Ceiling, Cushioned
- Full HD Video System
- Water Heater Bypass
- Whole Coach Water Filtration System
- 7' Interior Ceiling Height
- Halogen Ceiling Lights
- 1,200-Watt Inverter

DRIVER CONVENIENCE

- 3-Point Seat Belts at Driver & Front Passenger Seats
- AM/FM Radio w/CD Player, Satellite Radio-Ready w/Auxiliary Inputs
- Auto A/C Heater Combo
- Auxiliary Start Circuit
- Computer Workstation In-Dash
- Cruise Control
- Dash Fans
- Power Front Windshield Shade
- Engine Cover Convenience Tray
- Intermittent Wiper Control
- Radio Switch Main/Auxiliary Power
- Tilt Steering Wheel
- Battery Disconnect System
- Driver/Front Passenger - Faux Leather Seats Captain's Chairs w/Power Driver Seat
- DSS Manual Lift Satellite Dish

GALLEY

- Convection Microwave Oven
- 3-Burner, High-Output Cooktop
- 12 cu.ft. 4-Door Refrigerator w/Icemaker
- Brushed-Nickel Finish Cabinet Hardware
- Double-Bowl Stainless Steel Sink
- Fan-Tastic® Power Roof Vent
- Radius Corner Cabinetry
- Range Cover Flush Mount
- Single-Lever Moen® Faucet w/Sprayer
- Sink Cover/Cutting Board
- Solid-Surface Countertops
- Solid-Surface Backsplash
- Wastebasket
- Slide-Out Dinette Bins w/Latches

LIVING ROOM

- 32" LCD HDTV
- Dual 32" LCD HDTV (35J)
- DVD Home Theater Sound System
- Day/Night Pleated Shades
- Free-Standing Euro Chair w/Ottoman (Select Models)
- Residential Seat Styling
- Sofa Bed w/Air Mattress

BEDROOM

- 22" LCD HDTV
- Bedspread w/Décor Pillows
- Headboard
- Pleated Shades
- Rear Speakers
- Restonic® Deluxe Pillow-Top Innerspring Mattress

BATHROOM

- Porcelain Lavy Sink
- Moen® Lavy Faucet
- Fan-Tastic® Power Roof Vent
- Make-Up Lights
- Molded Tub/Shower Enclosure
- Porcelain Toilet w/Water Savers
- Toilet Tank San-T-Flush™ System
- Tile Flooring

SAFETY/CONVENIENCE (INTERIOR)

- Carbon Monoxide Detector/Alarm
- Child Safety Tether
- 30" Wide Entry Door
- Entry Assist Handle
- Multiple Seatbelt Locations
- Propane Detector/Alarm
- Smoke Detector/Alarm
- 10 ABC Fire Extinguisher

EXTERIOR THROUGHOUT

- 120V/12V AC/DC Converter Central Electrical Panel
- 4 Graphic Color Choices
- 3-Way Water Pump Switch
- 5.5 kW Onan® MicroQuiet Generator
- 50 Amp Service
- Aluminum Tube Front Grill
- Awning Rail/Drip Molding (Both Sides)
- Dual-Pane Windows w/Screens
- Dual Patio Receptacles
- Fiberglass Front/Rear Caps
- Full-Body Paint
- Halogen Headlights
- Heated Water & Holding Tank Compartments
- One-Piece Panoramic Windshield
- Mud Flaps
- Park Cable Receptacle
- Patio Awning - Electric

- Single-Motor Windshield Wipers w/Wet Arm
- Slide Topper Awnings
- Steel Outriggers
- TV Antenna w/Signal Booster
- Molded Front Quarter Panels

AUTOMOTIVE

- 4-Point Automatic Levelers
- Trailer Hitch w/7-Pin Electrical Hook-Up

SAFETY/CONVENIENCE (EXTERIOR)

- Automotive Safety Glass
- Daytime Running Lights
- Hydraulic 4-Wheel Disk Brakes w/4-Wheel Anti-Lock Brakes
- Large, Heated Remote Rear-View Mirrors w/Side-View Cameras
- Porch Light (Doorside)
- Power Entry Step
- Color LCD Rear-Vision Camera w/One-Way Audio
- Roof Ladder
- Underhood Utility Lights
- Utility Compartment w/Exterior Shower
- Winterizing Pick-Up Tube
- Lighted Entry Assist Handle

STORAGE

- Continuous One-Piece Compartment Bulb Seal
- Gas Lift Strut Supports (Select Locations)
- Side Swinging Luggage Doors (Select Locations)
- Lighted Luggage Compartments
- Pass-Through Storage (Select Models)
- Rotomolded Polyethylene Luggage Compartments

BODY STRUCTURE

- Aluminum Interlocking Floor/Wall/Ceiling Framing
- Basement Floor Configuration
- Power Platform® Construction (Fleetwood Exclusive)
- Radius Roof w/Ducted A/C
- Vacu-Bond® Upper/Lower Floors
- Vacu-Bond® Walls w/Smooth, High-Gloss Exterior Fiberglass

OPTIONS

INTERIOR

- Neutral Loss Protection
- Auto-Locating Satellite Dish
- Blu-ray® Home Theater Sound System
- Day/Night Double-Roller Shades

GALLEY

- Free-Standing Dinette w/Credenza

- Washer/Dryer (36D, 35J)
- 3 Burner, High-Output Range w/Oven

LIVING ROOM

- Facing Dinette
- Free-Standing Dinette w/Credenza
- Sofa Sleeper w/Air Mattress & Footrest
- 40" LED Mid-Ship TV (32VS)
- Free-Standing Recliner (32VS, 36D)

BEDROOM

- Queen Bed Air Mattress
- King Bed (35J)
- Bunk Beds w/TV/DVD Player (35J)

EXTERIOR

- CSA Package (Canadian Specs)**
- Diamond Shield Clear Front Protective Mask

AUTOMOTIVE

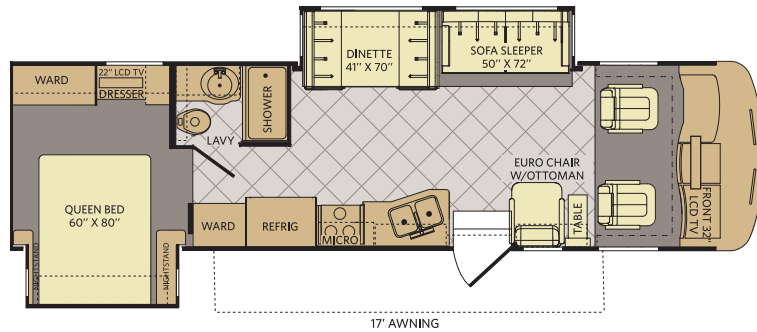
- Ford® Chassis w/6.8L Triton® V10 Engine

*Not all options are available on all floor plans. See your Fleetwood dealer for details.

**CSA Standards may require substitution or deletion to achieve conformance

FLOOR PLANS

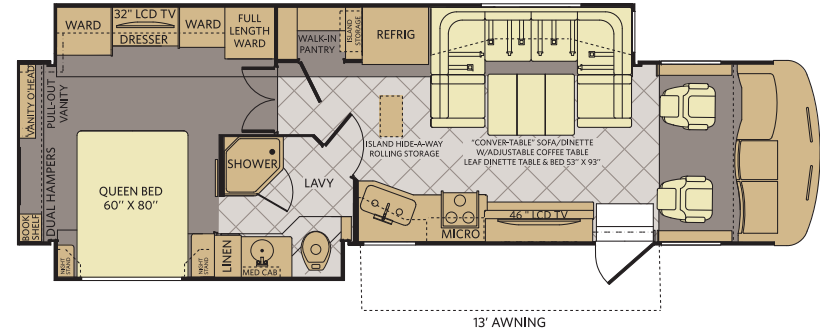
32VS



INTERIOR STORAGE CAPACITY: 144 CU. FT.
EXTERIOR STORAGE CAPACITY: 112 CU. FT.

▲ Available options: 113, 192, 345, 490, 830, 833

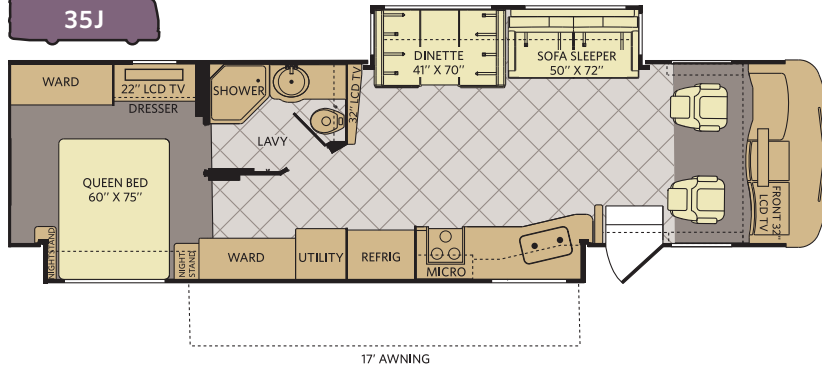
36S



INTERIOR STORAGE CAPACITY: 132 CU. FT.
EXTERIOR STORAGE CAPACITY: 100 CU. FT.

▲ Available options: 093, 113, 126, 139, 852

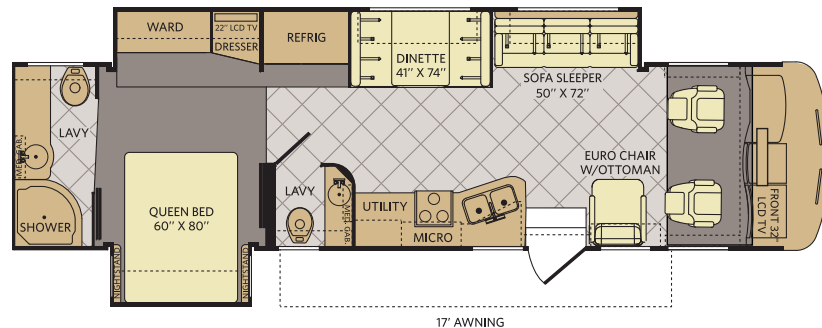
35J



INTERIOR STORAGE CAPACITY: 173 CU. FT.
EXTERIOR STORAGE CAPACITY: 87 CU. FT.

▲ Available options: 113, 126, 192, 830, 833, 852, 866

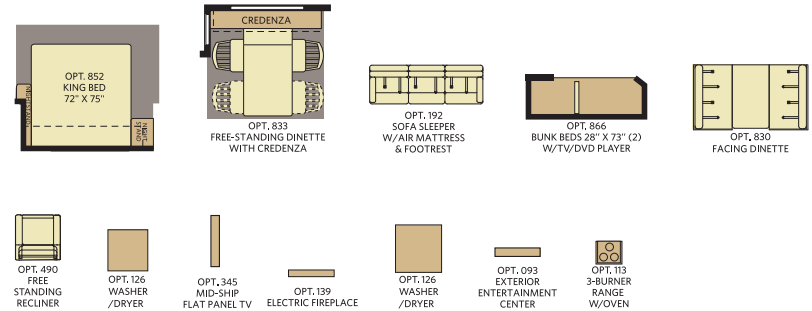
36D



INTERIOR STORAGE CAPACITY: 145 CU. FT.
EXTERIOR STORAGE CAPACITY: 105 CU. FT.

▲ Available options: 113, 126, 192, 490, 830, 833

FLOOR PLAN OPTIONS



WEIGHTS & MEASUREMENTS

| CHASSIS | FORD® | | | |
|--|--------|--------|--------|--------|
| MODELS | 32VS | 35J | 36D | 36S |
| Engine Displacement (liters) | 6.8 | 6.8 | 6.8 | 6.8 |
| Wheelbase (inches) | 208" | 228" | 228" | 228" |
| GVWR (lbs) ¹ | 22,000 | 22,000 | 22,000 | 22,000 |
| Front GAWR (lbs) ² | 8,000 | 8,000 | 8,000 | 8,000 |
| Rear GAWR (lbs) ² | 15,000 | 15,000 | 15,000 | 15,000 |
| GCWR (lbs) ³ | 26,000 | 26,000 | 26,000 | 26,000 |
| Hitch Rating Weight (lbs) [†] | 5,000 | 5,000 | 5,000 | 5,000 |
| Tongue Weight (lbs) [†] | 500 | 500 | 500 | 500 |
| Fuel Capacity (gal) | 80 | 80 | 80 | 80 |

FORD CHASSIS

Model: Ford®
Engine: 6.8L Triton V10
Transmission: Ford®, 5-Speed, Automatic w/Overdrive

Alternator: 175 Amp
Torque: 457 lb-ft @ 3,250 RPM
Horsepower: 362HP

DIMENSIONS & CAPACITIES

| MODELS | 32VS | 35J | 36D | 36S |
|--|---------|---------|---------|---------|
| Overall Length (inches) ⁴ | 33' 5" | 36' 11" | 36' 5" | 36' 5" |
| Overall Height (with A/C) | 12' 10" | 12' 10" | 12' 10" | 12' 10" |
| Overall Width (maximum) ^{5,6} | 102" | 102" | 102" | 102" |
| Interior Height (maximum) | 84" | 84" | 84" | 84" |
| Interior Width (maximum) | 96" | 96" | 96" | 96" |
| Fresh Water Holding Tank (gal) | 80 | 85 | 80 | 80 |
| Grey Water Holding Tank (gal) | 58 | 58 | 58 | 58 |
| Black Water Holding Tank (gal) | 42 | 42 | 42 | 42 |
| Appliance Propane Tank (gal) (WC) ⁷ | 25 | 25 | 25 | 25 |
| Water Heater Tank (gal) | 10 | 10 | 10 | 10 |

Liquid Weight Reference:

Water (gal) = (8.3 lbs/3.8 kgs) Fuel (gal) = (6.1 lbs/2.8 kgs) Propane (gal) = (4.2 lbs/1.9 kgs)

Metric Conversion:

Multiply pounds x 0.453 to obtain kilograms. Multiply gallons x 3.785 to obtain liters.

Multiply liters x 61 to obtain cubic inches.

- GVWR (Gross Vehicle Weight Rating) is the maximum permissible weight of this fully loaded motor home. The GVWR is equal to or greater than the sum of the (UVW) unloaded vehicle weight plus the (OCCC) occupant cargo-carrying capacity.*
 - GAWR (Gross Axle Weight Rating) is the maximum permissible loaded weight a specific axle is designed to carry.
 - GCWR (Gross Combined Weight Rating) is the value specified by the motor home manufacturer as the maximum allowable loaded weight of this motor home with its towed vehicle. Towing and braking capacities may be different. Refer to Fleetwood and chassis manufacturer's manuals for complete information.
 - Length measured from front bumper to rear bumper (excludes accessories).
 - Excludes safety equipment and awnings.
 - Motor homes feature a body width over 96" which will restrict your access to certain roads. Before purchasing, you should research any state and/or province road laws which may affect your usage.
 - Tank manufacturer's listed water capacity (WC). Actual propane capacity is 80% of water listing as required by the safety code.
- † The chassis manufacturer recommends the installation of a supplemental brake control system to activate the brakes on the vehicle or trailer you are towing. Hitch receiver ratings expressed are maximum for the hitch receiver installed and may require the purchase of additional equipment that is dependent on the weight of the towed load. Consult with hitch receiver manufacturer for further information.
- * UVW and OCCC are found on the label containing the federal certification tag in each RV.

IMPORTANT—PLEASE READ: Product information, photography and illustrations included in this publication were as accurate as possible at the time of printing. For further product information and changes, please visit our website at www.fleetwoodrv.com or contact your local Fleetwood RV dealer. Prices, materials, design and specifications are subject to change without notice. All weights, fuel, liquid capacities and dimensions are approximate. Fleetwood RV has designed its recreational vehicles to provide a variety of uses for its customers. Each vehicle features optimal seating, sleeping, storage and fluid capacities. The user is responsible for selecting the proper combination of loads (i.e., occupants, equipment, fluids, cargo, etc.) to ensure that the vehicle's capacities are not exceeded.

WHY FLEETWOOD RV?



Quality

There's no cutting corners. Skilled craftsmen build every Fleetwood RV for maximum durability and longevity.



Trust

More people trust Fleetwood RV. After all, we've spent over 60 years perfecting RVs, earning the loyalty of generations of RVers.



Passion

We're truly passionate about the RV lifestyle. Fleetwood RV was founded by RV enthusiasts, and that tradition continues today.



Safety

You've got precious cargo. So we've engineered dozens of innovative safety features into our motor homes to give you more peace of mind.



Service

Help is nearby with 24/7 emergency roadside assistance through **Coach-Net**.^{**} And when you need an upgrade or repair, you'll find Fleetwood RV dealers all across North America ready to assist you.



Warranty

Exclusive RV ownercare warranty.
See your Fleetwood RV dealer for details.

^{*}All 2012 Fleetwood RV motor homes include a 1-year membership to Coach-Net.

^{**}For complete info, see your Fleetwood RV dealer.



RV OWNERCARE^{**}

Limited one-year/15,000-mile coach warranty and three-year/45,000-mile structural warranty, whichever occurs first, and it is fully transferable for the first 12 months. RV OWNERCARE is one of the RV industry's most comprehensive programs and includes systems, appliances, components and construction, with no deductible and no service charge. RV OWNERCARE coverage is provided by a company that will be around in the future to service your needs. See your nearest Fleetwood RV dealer for a full explanation of benefits and restrictions.

CONTACT US

To locate a dealer near you, visit our website at www.fleetwoodrv.com or call 1-800-322-8216. We can also be contacted at Fleetwood RV Customer Relations, P.O. Box 1007, Decatur, IN 46733.

FLEETWOOD RV MOTOR HOME CLUBS

As a Fleetwood RV owner, you're invited to become a member of several Fleetwood RV motor home clubs. Becoming a club member is the perfect way to meet other Fleetwood owners who love to travel across America and share in the RV lifestyle. Visit our website at www.fleetwoodrv.com/owners_clubs to learn more and join the fun.



YOUR LOCAL FLEETWOOD RV DEALER IS:

©2011. Fleetwood RV, Inc.
Printed in the USA. Inventory Control Number SW12B1, 8/11.
Model Year 2012, First Edition.