

WE PREDICT A REIGN OF FUN WITH STORM.[®]

Storm[®] has just arrived, bringing more of what you want at a sticker price that redefines value in a Class A motor home.

Hiking, fishing, biking, golf...Storm will take you where you want to go in style. For a smooth and nearly flawless ride, this wide-body RV sits on a Power Platform II that minimizes chassis flex, even on bumpy roads. A steel-truss design allows substantial space below for sports gear.

When it comes to interior room, Storm doesn't hold back here either. With living room, dinette and bedroom slide-outs, it could easily be thought of as your second home. There's even storage drawers under the family-size dinette. A Magic Chef[®] 16" 3-burner range/oven, a microwave with electronic touch pad, and a 6 cu. ft. Dometic[®] double-door

refrigerator provide all the accommodations you need to prepare gourmet meals.

Don't forget, even though this motor home will take you away from it all, you can stay connected. When caught in a Storm, the dash-mounted workstation has computer hookups so you'll have access to the internet and the ability to e-mail family and friends.* There's also an additional telephone jack in the bedroom.

You want more? View your favorite shows on the 20" Panasonic[®] TV with interior-controlled antenna, video control box and park cable-ready receptacle.

So with all of this going for you, we forecast exciting adventures with Storm.



* Not intended for use while in transit. Unsecured items are hazardous during traveling.



STORM FEATURES FOR 2002

Our engineering may set us apart from the rest, but the things you'll notice most when you and your family take a trip, are the top-of-the-line features. Here are but a few of the items that make life on the road with Storm memorable.



Front entertainment center with 20" Panasonic® color TV, and optional VCR are just some of the many Storm features.



An optional electronic climate control system with dual A/C controls enables a separate climate in the front and rear of the coach.



Every Storm comes prewired for an optional Winegard® satellite dish.



Fill Storm up on either side of the pump with a rear fuel-fill location, especially convenient when towing a vehicle.

Carpeted storage compartments are non-corrosive to prevent rusting.

A coach-length, aluminum drip rail prevents discoloring of the sidewall.

Practical, single die-cast metal paddle latches are flush-mounted for a luggage door system that's durable and easy-to-operate.

Anti-wicking process, on all of Storm's openings and windows, includes multiple seals for prevention of leaks and moisture buildup.

Our swing-down engine access door makes it easy to check Storm's fluid levels and electrical panel.



Storm's standard 4.0kW ultra-quiet Onan® generator provides 110V service and comes with a 3-year warranty. (Optional 5.5kW generator shown)



The driver's cockpit is user friendly with automotive-style gauges and easy-to-reach controls.



Storm's basement space includes lots of storage for your gear.



2002 SPECIFICATIONS

FORD® CHASSIS	30H	31A	31W	34D
Engine LD	6.8L	6.8L	6.8L	6.8L
Wheelbase	190"	208"	208"	208"
GVWR (lbs) (1)	18,000	20,500	20,500	20,500
Front GAWR (lbs) (2)	7,000	7,000	7,000	7,000
Rear GAWR (lbs) (2)	11,000	13,500	13,500	13,500
Base Weight (lbs) (3)	13,420	15,370	16,000	15,670
GCWR (lbs) (4)	23,000	25,500	25,500	25,500
Hitch Rating Weight (lbs)*	5,000	5,000	5,000	5,000
Tongue Weight (lbs)*	500	500	500	500
Fuel Capacity (gal)	75	75	75	75

WORKHORSE® CHASSIS	30H	31A	31W	34D
Engine LD	8.1L	N/A	N/A	N/A
Wheelbase	190"	N/A	N/A	N/A
GVWR (lbs) (1)	17,000	N/A	N/A	N/A
Front GAWR (lbs) (2)	6,000	N/A	N/A	N/A
Rear GAWR (lbs) (2)	11,000	N/A	N/A	N/A
Base Weight (lbs) (3)	12,700	N/A	N/A	N/A
GCWR (lbs) (4)	20,500	N/A	N/A	N/A
Hitch Rating Weight (lbs)*	3,500	N/A	N/A	N/A
Tongue Weight (lbs)*	350	N/A	N/A	N/A
Fuel Capacity (gal)	75	N/A	N/A	N/A

DIMENSIONS AND CAPACITIES	30H	31A	31W	34D
Length (5)	31' 6"	32'	32'	35'
Height (with A/C)	11' 10"	11' 10"	11' 10"	11' 10"
Width (maximum) (6)	102"	102"	102"	102"
Interior Height (maximum)	79"	79"	79"	79"
Interior Width (maximum)	96"	96"	96"	96"

LIQUID CAPACITIES (GALLONS)	30H	31A	31W	34D
Fresh Water Holding Tank (gal)	70	70	70	70
Grey Water Holding Tank (gal)	50	50	50	50
Black Water Holding Tank (gal)	50	50	50	50
Appliance LPG Tank (gal) (WC) (7)	25	25	25	25
Water Heater Tank (gal)	6	6	6	6

Liquid Weight Reference Metric Conversion

Water (gal/ltrs) = (8.3 lbs/3.8 kgs)
Multiply pounds x 0.453 to obtain kilograms

Fuel (gal/ltrs) = (6.1 lbs/2.8 kgs)

LPG (gal/ltrs) = (4.5 lbs/2.0kgs)
Multiply gallons x 3.785 to obtain liters

1. GVWR (Gross Vehicle Weight Rating): Means the maximum permissible loaded weight of the motor home. The GVWR is equal to or greater than the sum of the unloaded vehicle weight plus the net carrying capacity.
2. GAWR (Gross Axle Weight Rating): Means the maximum permissible loaded weight a specific axle is designed to carry.
3. BW (Base Weight): Means the weight of the motor home without fuel, options, water, cargo or passengers.
4. GCWR (Gross Combined Weight Rating): Means the value specified by the motor home manufacturer as the maximum allowable loaded weight of this motor home with its towed vehicle. Towing and braking capacities may differ. Refer to Fleetwood and chassis manufacturer manuals for complete information.

5. Overall length measured from forward most body point or bumper to rear most body point or rear bumper.
Add 6" for rear mounted spare tire.
Add 1" for rear ladder.

6. Excludes safety equipment and awnings.

7. Tank Manufacturer's listed water capacity (WC). Actual LPG capacity is 80% of water listing as required by the safety code.

N/A: Not available on this model.

* The chassis manufacturer recommends the installation of a supplemental brake control system to activate the brakes on the vehicle or trailer you are towing.

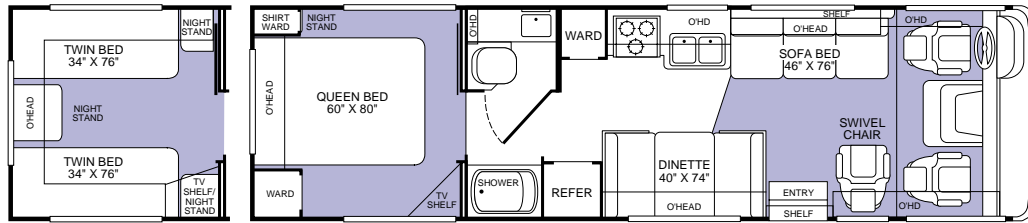
IMPORTANT—PLEASE READ: Product information, photography and illustrations included in this publication were as accurate as possible at the time of printing. For further product information and changes, please visit our website at www.fleetwoodrv.com or contact your local Fleetwood dealer. Prices, materials, design and specifications are subject to change without notice. All weights, fuel, liquid capacities and dimensions are approximate. Fleetwood has designed its recreational vehicles to provide a variety of uses for its customers. Each vehicle features optimal seating, sleeping, storage and fluid capacities. The user is responsible for selecting the proper combination of loads (i.e. occupants, equipment, fluids, cargo, etc.) to ensure that the vehicle's capacities are not exceeded.



STORM FLOOR PLANS FOR 2002

MODEL 30H

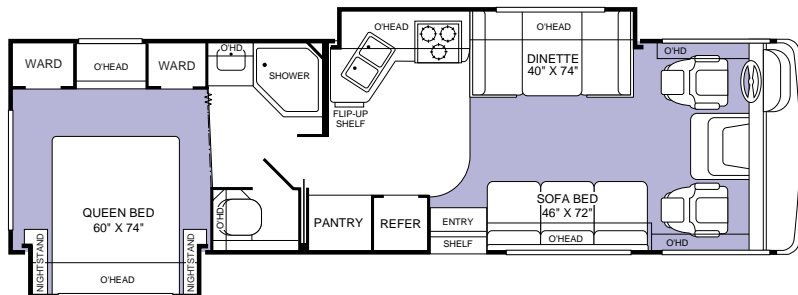
- Island Queen Bed
- Private Toilet and Lavy
- Sofa Bed
- Optional Twin Beds
- Dinette
- Swivel Chair



TWIN BED OPT. 835

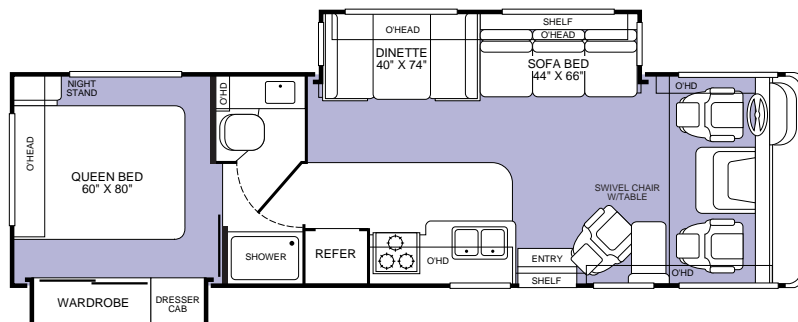
MODEL 31A

- Bedroom Slide-Out with Island Queen Bed
- Private Toilet
- Galley/Dinette Slide-Out
- Bedroom Feature Cabinets with Integrated Vanity
- Spacious Pantry
- Sofa Bed



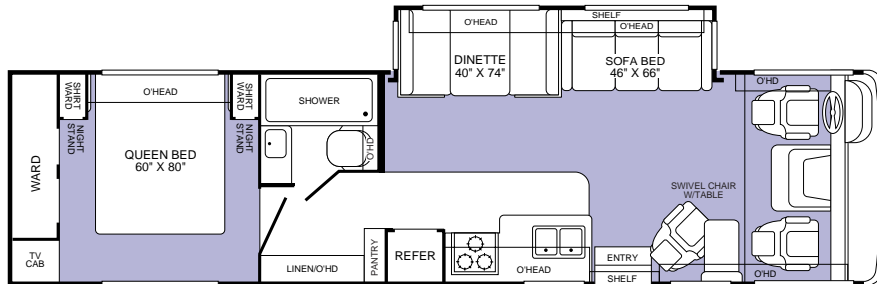
MODEL 31W

- Island Queen Bed
- Private Toilet and Lavy
- Living Room Slide-Out with Dinette and Sofa Bed
- Wardrobe Slide-Out with Dresser
- Swivel Chair with Table



MODEL 34D

- Island Queen Bed
- Dual Nightstands and Shirt Wards
- Spacious Wardrobe
- Fully Enclosed Bathroom
- Living Room Slide-Out with Dinette and Sofa Bed
- Swivel Chair with Table



2002 OPTIONS

APPLIANCES	30H	31A	31W	34D
Panasonic® VCR/VHS	OPT	OPT	OPT	OPT
Winegard® Satellite Dish	OPT	OPT	OPT	OPT
Compact Disc Player	OPT	OPT	OPT	OPT
Fan-Tastic® Power Roof Vent	OPT	OPT	OPT	OPT
Rear Panasonic® Television with Remote	OPT	OPT	OPT	OPT
ELECTRICAL	30H	31A	31W	34D
Electronic Climate Control with Dual A/C w/5.5kW Generator Upgrade*	OPT	OPT	OPT	OPT
CSA Package-Workhorse®	OPT	N/A	N/A	N/A
CSA Package-Ford®	OPT	OPT	OPT	OPT
CSA Electronic Climate Control with Dual A/C w/5.5kW Generator Upgrade*	OPT	OPT	OPT	OPT
EXTERIOR	30H	31A	31W	34D
Awning-USA	OPT	OPT	OPT	OPT
4-Pt Manual Hydraulic Levelers-Workhorse®	OPT	N/A	N/A	N/A
4-Pt Manual Hydraulic Levelers-Ford®	OPT	STD	STD	STD
Heated Remote Rear View Mirrors	OPT	OPT	OPT	OPT
EXTERIOR AUTOMOTIVE	30H	31A	31W	34D
Workhorse® Chassis 8.1L Engine	OPT	N/A	N/A	N/A
Ford® Chassis 6.8L Engine	OPT	OPT	OPT	OPT
Rear Vision Camera	OPT	OPT	OPT	OPT
INTERIOR	30H	31A	31W	34D
Shower Curtain	N/A	N/A	N/A	STD
Pleated Shower Door	STD	N/A	STD	N/A
Shower Door with Bright Brass Frame	N/A	STD	N/A	N/A
SLIDE-OUT	30H	31A	31W	34D
Living Room-Dinette/Sofa	N/A	N/A	STD	STD
Bedroom Wardrobe-Closet/Organizer	N/A	N/A	STD	N/A
Bedroom-Bed	N/A	STD	N/A	N/A
Galley-Galley/Sofa	N/A	STD	N/A	N/A

*Recommended for extreme temperatures and high humidity conditions.

STANDARD FEATURES

FLEETWOOD® RV

APPLIANCES

- Front 20" Panasonic® TV in Overhead
- Smoke Detector/Alarm
- LPG Detector/Alarm
- CO Detector/Alarm
- Furnace 35M BTU
- 6-Gallon Quick Recovery Water Heater with D.S.I.
- Water Heater Bypass
- 16" 3-Burner, High-Output Range with Oven
- Light/Power Range Hood & Monitor Panel
- Folding Range Cover
- Single, Front Area, A/C with Solar Panel
- Marine Toilet
- 1-cu. ft. Microwave with Electronic Touch Pad
- 6-cu. ft. Dometic® Double Door Refrigerator
- Single-Lever Galley Faucet
- Demand Water Pump with Filter
- Power Bath Vent
- TV Antenna
- Video Control Box
- Fire Extinguisher
- Telephone Jack in Dash and Bedroom
- 12V Jack

BODY STRUCTURE

- Vacubond Upper/Lower Floor
- Vacubond Walls with Smooth Exterior Fiberglass
- Radius Roof with Ducted A/C & Flat Interior
- Royal Tuff-Ply™ Roof
- Steel Floor/Wall/Ceiling Framing

ELECTRICAL

- Patio Receptacle in Luggage Compartment
- 120V/12V AC/DC Converter Central Electrical Panel with Charger
- Water Pump Switch
- 4.0kW Onan® Generator
- 30-amp Service
- Dual 6V/Deep-Cycle 218-amp House Batteries
- VCR Ready
- Rear TV Receptacle

EXTERIOR

- Fiberglass Front Cap
- Fiberglass Front Bumper

EXTERIOR (CONT.)

- Aluminum Front Grille
- ABS Front/Rear Wheel Well Trim
- Swing-Down Engine Access Door
- Entry Door with Deadbolt Latch
- Slider Windows in Living Room
- Jalousie Windows in Bedroom
- Roof Ladder
- Exterior Assist Handle
- Exterior Rear View Mirrors
- 20' Sewer Hose
- TV Antenna
- Park Cable Receptacle
- Awning Rail/Drip Molding (Both Sides)
- Power Entry Step
- Exterior Shower
- Porch Light
- 3 Colorway Graphics to Match Decor
- Storm Logo Badging

EXTERIOR AUTOMOTIVE

- Tinted Windshield
- Undercoating
- Stainless Steel Wheel Simulators
- Valve Extenders
- Steel Surface on Bulkhead
- Trailer Hitch with 7-Point Electrical Hook-up*
- Halogen Headlights
- Under-Floor Spare Tire (Selected Models)
- Dual Battery Charge Control
- Single Motor Windshield Wipers with Wet Arm

EXTERIOR STORAGE

- Insulated Luggage Doors
- Single-Paddle/Metal Latches
- Continuous One-Piece Bulb Seals
- Gas Lift Strut Supports—One Per Door
- Steel Seal Frames
- Carpeted Luggage Compartments
- Lighted Luggage Compartments

INTERIOR

- 4 Interior Decors
- Skylight in Tub/Shower
- Wall-to-Wall Carpet with Pad—Living & Bedroom
- Vinyl Floor Covering—Galley & Bath
- Wood Drawers

INTERIOR (CONT.)

- Roller Guide Drawer Slides with Transit Ship Locks
- Brass-Finished Cabinet Hardware
- Reclining Bucket Seat/Lounge
- Seat Belts at Designated Seating Positions
- Shades—Day/Night in Living, Night in Bedroom
- Bedspread
- Restonic® Innerspring Mattress
- Slide-Out Dinette Bins with Locks
- Window Covering
- ABS Molded Shower Pan
- Bright Brass Bath Accessories
- Entry Rail (Oak & Brass)
- Sink Cutting Board
- Large, Double Stainless Steel Sink
- Adjustable Cabinet Shelves (Selected Cabinets)
- Solid Divider Doors

INTERIOR AUTOMOTIVE

- Intermittent Wiper Control
- Double Swivel Sun Visors with Map Pockets
- Cruise Control
- Radio with Cassette AM/FM/MX—Electronic Tuning
- Auxiliary Start Circuit
- Battery Disconnect System
- Auto A/C Heater Combo
- Battery-Powered Radio Switch—Main/Auxiliary
- Driver/Passenger Side Magazine Rack
- Tilt Steering Wheel
- Driver/Passenger Captain's Chairs with Reclining Back/Slide Controls
- 3-Point Seat Belts on Driver/Passenger Seats

INTERIOR LIGHTING

- Decor Lighting
- Incandescent Lighting
- Make-Up Lights in Bath

PLATFORM CONSTRUCTION

- Basement Floor Configuration
- Heated Water & Holding Tank Compartments
- Carpeted, Galvanized Luggage Compartments
- Steel Truss System
- Power Platform II

*The chassis manufacturer recommends the installation of a supplemental brake control system to activate the brakes on the vehicle or trailer you are towing.

Why would you buy anything else?

FLEETWOOD RV

For every road you travel, Fleetwood has the RV to fit your high standards and lifestyle. We build the recreational vehicles America wants, accounting for nearly one out of every three RVs on the road today. How do we do it? We call it the **Fleetwood Equation**.

Size + Service + Quality = Value!

Size *The world's #1 RV manufacturer*

For over a half-century Fleetwood has grown to become the **largest manufacturer of recreational vehicles in the world**. And stands today as the only RV manufacturer in the **Fortune 500**. You won't find our nearest competitor in even the top 1,000. Fleetwood remains, year after year, the largest, most influential, innovative and recognized leader in the RV industry.

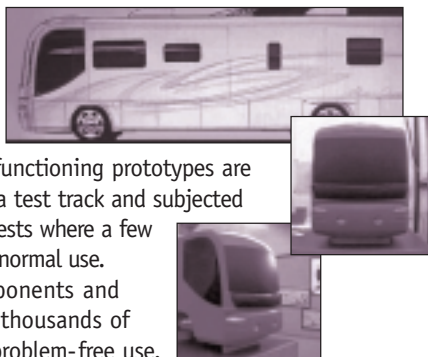
Service *Listening to our customers*

With over 1,100 service dealers in the US and Canada, Fleetwood has the largest network in the RV industry. No other RV company comes close in equaling this vital customer support system. Fleetwood RV service dealers have instant, real-time electronic access to your service records as well as parts inventory and warranty repair authorization inquiries. We also provide a 24-hour customer call center for service and product information so no matter where you travel in North America, professional support and fast answers are always nearby. Call toll free 24 hours a day: **1-800-322-8216**.



Quality *Using only the best materials*

At Fleetwood, quality begins at the design stage so every coach is built right, right from the start. Subsequent to design approval, full-functioning prototypes are built, then punished on a test track and subjected to accelerated life cycle tests where a few weeks can equal years of normal use. At the same time, components and systems are test-cycled thousands of times assuring years of problem-free use.



Once approved for production, each unit is built by skilled technicians using quality materials and components, many of which are sourced through, or manufactured by, our subsidiary companies such as Gold Shield Fiberglass and Continental Lumber Products.



Fleetwood engineers specify the very best products and appliances from companies such as Coleman®, Dometic®, Flexsteel®, Ford®, Freightliner®, Magic Chef®, Panasonic®, and Workhorse®. Companies that are experts in their respective fields and play a significant role as partners, not just suppliers.

All this assures that every Fleetwood RV has the fit, finish and details required by our high standards—as well as yours.

Value *Priced right with style*

At Fleetwood RV, we look at value as the sum of everything we offer.

- **Value** is our design, engineering expertise, and innovative manufacturing methods.
- **Value** is structures and components that are the best in the industry, that meet or exceed government and industry safety standards.
- **Value** is Ownercare—a one-year/three-year warranty with coverage from a company that will be around in the future to service your needs. Ownercare is one of the RV industry's most comprehensive programs and includes systems and applications, construction, no deductible and no service charge. And it is fully transferable for the first 12 months. See your nearest Fleetwood dealer for a full explanation of benefits and restrictions.
- **Value** is customer satisfaction. When asked, more experienced RV owners would recommend Fleetwood to a friend than any other brand. Fleetwood RVs consistently hold their value better than most RVs at trade-in time.



Value is peace of mind.

SSQV—Size, Service, Quality, and Value. Together they equate to the very best RV you can buy, and the reason you should purchase a Fleetwood over any other brand.

Require these features when you purchase your next RV... Fleetwood does!

See you on the road!

Limited One-Year/Three-Year Warranty

For Motor Homes Manufactured by subsidiaries of Fleetwood Enterprises, Inc., sold in the United States and Canada

Coverage Provided

Your new motor home, including the structure, plumbing, heating, electrical systems, all appliances and equipment installed by the manufacturer, is warranted under normal use to be free from manufacturing defects in material or workmanship. Appearance imperfections or damage to paint, graphics, exterior materials, or upholstery that may have occurred prior to delivery are normally corrected during the inspection process at the manufacturing plant or at the dealership.

The warranty extends to the first retail purchaser and his transferee(s) and begins on the date of original retail delivery or the date the motor home is first placed into service as a rental, commercial or demonstrator unit (whichever occurs first). The warranty extends for the following periods:

1. For all defects (other than structural) the warranty extends for a period of one year from such date or until the unit has received 15,000 total miles of use as determined by the mileage shown on the odometer (whichever occurs first).
2. For structural defects, 3 years; structural defects are limited to the following: roof structure, sub-floor structure, exterior walls, interior walls and ceilings.

Written notice of defects must be given to the selling dealer or manufacturer not later than ten (10) days after the expiration of the warranty period.

Owner's Obligation

The owner is responsible for normal maintenance as described in the Owner's Information Package; however, minor adjustments (such as cabinet latches, TV antenna control, etc.) will be performed by the dealer during the first 90 days of warranty coverage. Thereafter, such adjustments are the responsibility of the owner as normal maintenance unless required as a direct result of repair or replacement of a defective part under this warranty.

If a problem occurs which the owner believes is covered by this warranty, the owner shall contact the selling dealer, or the Fleetwood Service Center, giving sufficient information to resolve the matter. The owner shall deliver the motor home to the dealer or the Fleetwood Service Center location for warranty service.

FLEETWOOD® RV

The World's #1 RV Manufacturer

Fleetwood Enterprises, Inc. • RV Marketing • P.O. Box 7638 • Riverside, CA 92513-7638

Your local Fleetwood RV dealer is:

Dealer's Obligation

By agreement with the manufacturer, the dealer is obligated to maintain the motor home prior to retail sale, to perform a detailed predelivery inspection and to repair or replace any parts necessary to correct defects in material or workmanship.

When the Dealer Does Not Resolve the Problem

If the dealer is unable or unwilling to resolve a problem which the owner is convinced is covered by the warranty, the owner should contact the Fleetwood Service Center at the address listed below and provide the Fleetwood Service Center with a description in writing of the problem and attempts made to resolve it.

Manufacturer's Obligations

Upon receipt of notice of a claim, where the dealer was unable or unwilling to resolve the problem the Fleetwood Service Center will repair or replace any parts necessary to correct defects in material or workmanship or will take other appropriate action as may be required.

What is Not Covered By This Warranty

This warranty does not cover:

1. The automotive chassis system (including the chassis and drive train), tires and batteries, which are covered by the separate warranties of the respective manufacturers of these components.
2. Defects caused by or related to:
 - a. Abuse, misuse, negligence or accident;
 - b. Failure to comply with instructions contained in the Owner's Information Package;
 - c. Alteration or modification of the motor home;
 - d. Environmental conditions (salt, hail, chemicals in the atmosphere, etc.)
3. Normal deterioration due to wear or exposure, such as fading of fabrics or drapes, carpet wear, etc.
4. Normal maintenance and service items, such as light bulbs, fuses, wiper blades, lubricants, etc.
5. Motor homes on which the odometer reading has been altered.
6. Transportation to and from dealer or Fleetwood Service Center location, loss of time, inconvenience, commercial loss, loss of use, towing charges, bus fares, vehicle rental, incidental charges such as telephone calls, or hotel bills, or other incidental or consequential damages.

Some states do not allow the exclusion of limitation of incidental or consequential damages, so the above limitation exclusion may not apply to you.

This warranty gives you specific legal rights, and you may also have other rights, which vary from state to state.

The manufacturer is not responsible for any undertaking, representation or warranty made by any dealer or other person beyond those expressly set forth in this warranty.

www.fleetwoodrv.com

Visit our website to find a dealer near you or learn more about other Fleetwood products. Or call 1-800-444-4905.

FOR CUSTOMER ASSISTANCE, call toll free 24 hours a day at 1-800-322-8216, visit our website, or you may write to Fleetwood Enterprises, Inc., P.O. Box 7638, Riverside, CA 92513-7638.

IMPORTANT—PLEASE READ: Product information, photography and illustrations included in this publication were as accurate as possible at the time of printing. For further product information and changes, please visit our website at www.fleetwoodrv.com or contact your local Fleetwood dealer. Prices, materials, design and specifications are subject to change without notice. All weights, fuel, liquid capacities and dimensions are approximate. Fleetwood has designed its recreational vehicles to provide a variety of uses for its customers. Each vehicle features optimal seating, sleeping, storage and fluid capacities. The user is responsible for selecting the proper combination of loads (i.e. occupants, equipment, fluids, cargo, etc.) to ensure that the vehicle's capacities are not exceeded.