

*Break Free and Explore.*



2007  
**STORM**  
CLASS A GAS



Power Platform Construction | Large Tank Capacities | Basement Storage | EZ Store

## *Well Designed.*

Enjoy a comfortable atmosphere on the road, thanks to Storm's spacious floor plan layouts. Relax in cozy Flexsteel® furniture with a lifetime warranty on the frame and take advantage of features like full extension hardware, giving you full access to the drawers for maximum storage room.



Storm 34F shown in Pacific Pearl interior décor with Windsor Birch wood finish.



#### THE CHILL GRILL

is a great feature that circulates cold air into the coach on those warm days.



#### THE FLEXSTEEL® RECLINER

(available, swivel chair is standard) is very comfortable and features a convenient fold away table perfect for reading a book, using a laptop or enjoying a snack.



#### ENTERTAINMENT CENTER

features a 24" TV and available DVD/VCR combo making it easy to watch your favorite movies wherever you are.



#### THE LARGE DINETTE

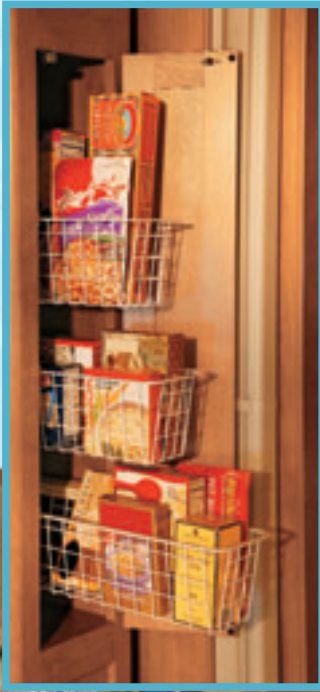
includes spacious seating for four, a large window for a great view, convenient pull-out drawers for storage and integrated cup holders.



#### THE FLEXSTEEL® JACKKNIFE SOFA

has a lifetime warranty on the frame, and features integrated cup holders.





**CONVENIENT OVERHEAD STORAGE**  
above the sink provides plenty of room  
for full-size plates and dishes.



**CONVENIENT PULL-OUT BASKETS**  
(select models) in the galley pantry, slide in/out with  
ease for storing your non-perishable food items.



## *Convenient Cooking.*

Storm makes cooking easy thanks to it's well equipped galley, providing the conveniences of home wherever you go. Take full advantage of the durable and scratch resistant stainless steel





#### **STORM'S BEDROOM**

features a comfortable innerspring queen-size mattress, pleated shades, convenient bedside tables, reading lights, and plenty of storage for clothing and extras.



#### **A FUNCTIONAL DESK AREA**

beneath the bedroom TV comes equipped with phone and power jacks to easily set up your laptop (TV is available).



#### **A LARGE WARDROBE WITH MIRRORED DOORS** can hold plenty of clothing, shoes or accessories.



#### **THE BATHROOM**

includes a skylight in the shower, 3-bulb vanity lighting and a mirrored door medicine cabinet that provides plenty of room to store your bathroom supplies.

sink for easy cleanup. Preparing a meal is a breeze with the high output 3-burner range with stove and the 8 cu. ft. Dometic® refrigerator is ideal for storing food and beverages. Other features include a Fan-Tastic® roof fan for ventilation and adjustable cabinet shelves so you can customize your storage needs.

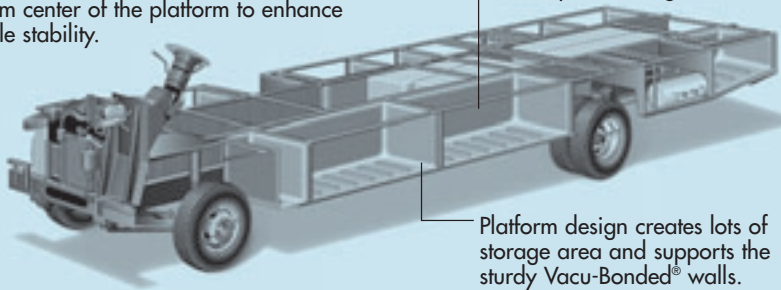
# POWER STRENGTH RELIABILITY

## POWER PLATFORM CONSTRUCTION

Fleetwood's patented Power Platform begins with two 10-in. steel I-beams welded lengthwise to the chassis. From the beams, steel outriggers extend outward. Together, they create a basement for fluid tanks and storage while supporting the floor, walls and roof with a rigid metal frame. This complements the chassis to make it even stronger.

Holding tanks are positioned in the bottom center of the platform to enhance vehicle stability.

Holding tanks are enclosed between the upper and lower basement floors. This allows them to be heated to hamper freezing in cold weather.



Platform design creates lots of storage area and supports the sturdy Vacu-Bonded® walls.

\*Drawings are for illustrative purpose only to highlight aspects of motor home construction. Actual motor home design depends on model and is subject to change.

## WHY FLEETWOOD?



### PASSION

We're truly passionate about the RV lifestyle. Fleetwood was founded by RV enthusiasts, and that tradition continues today.



### QUALITY

There's no cutting corners. Skilled craftsmen build every Fleetwood RV for maximum durability and longevity.



### SERVICE

Help is nearby. When you need an upgrade or repair, you'll find facilities all across North America and more than 1,100 dealers ready to assist you.



### WARRANTY

Exclusive RV Ownercare warranty. See your Fleetwood dealer for details.



### TRUST

More people trust Fleetwood. After all, we've spent over 50 years perfecting RVs, earning the loyalty of generations of RVers.

### AN EXTERIOR AWNING

is standard and provides great protection from the weather, so you can enjoy your surroundings rain or shine.

### TUFF-PLY ROOF

is UV resistant, durable, easy to clean, and doesn't scratch like many competitors' fiberglass or aluminum roofs.

### THE REAR FUEL FILL

allows you to fill up no matter what side of the pump you're on.

### TUFF-COAT® EXTERIOR FIBERGLASS SIDEWALLS

are Vacu-bonded® into a strong composite structure, as opposed to competitors' thin fiberglass laminate.

### STORAGE COMPARTMENTS

are lighted and include single paddle latches, gas-lift strut supports, stainless-steel hinges and insulated aluminum doors.



Vehicle shown in Pacific Pearl.





#### THE DRIVER'S AREA

features an AM/FM radio with CD player, easy to read gauges, convenient map storage and cup holders.

#### EZ STORE COMPARTMENTS

allow for storage of oversized or bulky items and conveniently move with the slide-out for easy access to your gear.



#### THE STYLISH REAR CAP

looks great, featuring a convenient roof ladder for easy roof access and a rear fuel fill, making it easy to fill your Storm no matter what side of the pump you are on.

#### THE REAR VISION CAMERA

(available) provides a live feed to the driver's dash and one way audio to easily communicate while backing up.



#### ONAN® 4.0 KW MICRO QUIET GENERATOR

runs very quietly compared to other generators (5.5 kW generator is shown above and is standard on the 34F).



#### THE UTILITY COMPARTMENT

provides a central place to empty your holding tanks and includes a water sprayer for quick clean up. For convenience, the compartment is lighted and components are clearly marked.



# Three Interiors to Select From. The Choice is Yours.

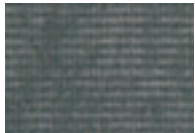
Choose from three stylish interior décor motifs with color coordinating exterior graphics.

## STORM EXTERIOR/INTERIOR COLOR CHOICES



### PACIFIC PEARL

Living/Dining Room



Sofa Bed



Dinette Cushions & Throw Pillow



Swivel Chair

Bedroom



Bedspread



Pillow Shams

### INTERIOR WOOD FINISH



Windsor Birch

### OLIVE FOG

Living/Dining Room



Sofa Bed

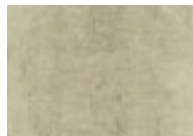


Dinette Cushions & Throw Pillow



Swivel Chair

Bedroom



Bedspread



Pillow Shams

### BRYCE CANYON

Living/Dining Room



Sofa Bed & Swivel Chair

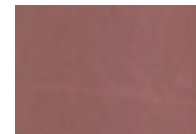


Dinette Cushions & Throw Pillow

Bedroom



Bedspread

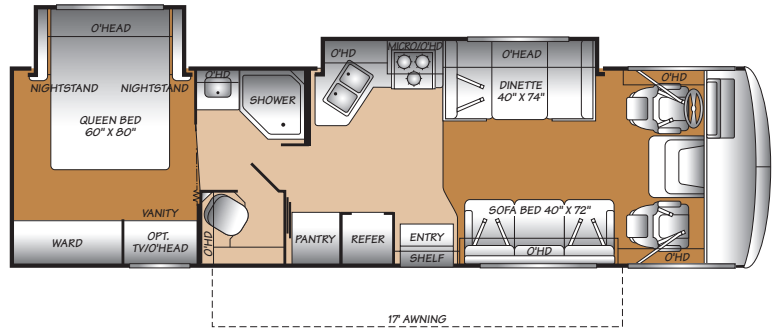


Pillow Shams



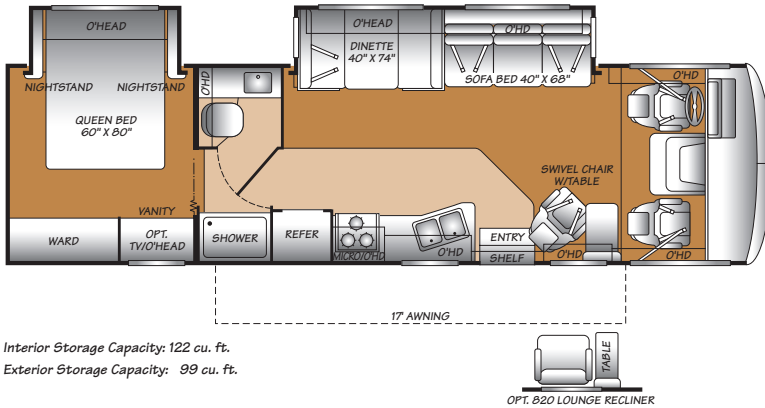
# Floor Plans

**31A**  
Double Slide-Out  
Sleeping Accommodations: 4\*



Interior Storage Capacity: 136 cu. ft.  
Exterior Storage Capacity: 96 cu. ft.

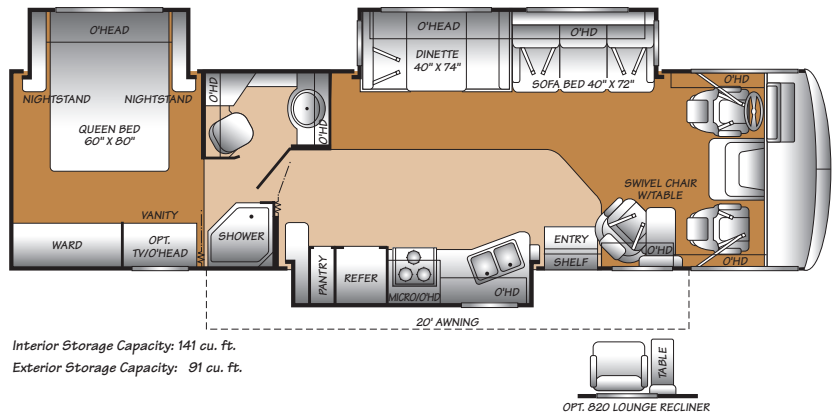
**31W**  
Double Slide-Out  
Sleeping Accommodations: 4\*



Interior Storage Capacity: 122 cu. ft.  
Exterior Storage Capacity: 99 cu. ft.

OPT. B20 LOUNGE RECLINER

**34F**  
Triple Slide-Out  
Sleeping Accommodations: 4\*



Interior Storage Capacity: 141 cu. ft.  
Exterior Storage Capacity: 91 cu. ft.

OPT. B20 LOUNGE RECLINER

\* Sleeping accommodations are based on designed sleeping areas and may be greater than Sleeping Capacity Weight Rating (SCWR) found on the Cargo Carrying Capacity label located in each RV. Sleeping accommodations are based on standard layout. Optional furniture may increase or decrease sleeping accommodations.

Seatbelt configuration may vary depending on options chosen.

# STANDARD FEATURES AND OPTIONS

## INTERIOR

### THROUGHOUT

- **Deluxe Roller Bearing, Full Extension Drawer Guides**
- **Plush Wall-to-Wall Carpet w/Carpet Pad**
- 120V/12V AC/DC Converter
- 3 Interior Décors
- 3-Way Water Pump Switch
- 34,000 BTU Furnace (30,000/20,000 BTU on 34F)
- 6-Gallon, Quick-Recovery Water Heater with Direct Spark Ignition
- Central Electrical Panel
- Coordinated Cabinet Hardware
- Demand Water Pump w/Filter
- Dual Battery Charge Control
- Electronic Climate Control Systems (34F)
- Real Wood Construction Drawers
- Solid Divider Doors
- Telephone Jack Under Passenger Side Dash
- Wall Switches
- Water Heater Bypass

### DRIVER CONVENIENCE

- **AM/FM Radio w/CD Player**
- **Driver/Front Passenger Captain's Chairs with Reclining Back/Slide Controls**
- 3-Point Seat Belts at Driver & Front Passenger Seats
- Automotive A/C Heater Combo
- Auxiliary Start Circuit
- Battery Shut-Off Switch
- Cruise Control
- Double Swivel Sun Visors w/Map Pockets
- Interior Lighting
- Intermittent Wiper Control
- Low Profile Engine Cover
- Map Lights (Driver & Passenger)
- Monitor Panel
- Radio Switch-Main/Auxiliary Power
- Soft-Surface Automotive Dash
- Tilt Steering Wheel
- Video Control Center

### LIVING ROOM

- **Day/Night Pleated Shades**
- **Flexsteel® Furniture**
- **Front 24" TV in Overhead**
- Incandescent Lighting
- Residential Seat Styling
- TV Antenna

Bold Denotes Fleetwood's Key Features

### GALLEY

- **1.0 cu. ft. Microwave Oven w/Electronic Touch Pad**
- **8 cu. ft. Dometic® Double Door Refrigerator**
- **Large, Double Stainless Steel Sink**
- 3-Burner High-Output Range w/Oven
- Adjustable Cabinet Shelves (Select Cabinets)
- Fan-Tastic® Power Roof Vent
- Flat Panel Base Cabinet Doors
- Folding Range Cover
- Radius Corner Cabinetry
- Raised-Panel Cabinet Doors
- Rangehood w/Light & Fan
- Single-Lever Faucet
- Solid Surface Countertop Edging
- Vinyl Flooring
- Wastebasket

### BEDROOM

- **Restonic® Innerspring Mattress**
- Bedsread w/Decor Pillows
- Decor Lighting
- Framed Mirror on Rear Wall
- Rear Speakers
- Second Phone Jack

### BATHROOM

- **Skylight in Tub/Shower**
- **Toilet Tank San-T-Flush™ System**
- Coordinated Bath Accessories
- Marine Toilet
- Molded Tub/Shower Enclosure
- Vinyl Flooring

### SAFETY/CONVENIENCE

- 10 ABC Fire Extinguisher
- Carbon Monoxide Detector/Alarm
- Propane Detector/Alarm
- Smoke Detector/Alarm

## EXTERIOR

### THROUGHOUT

- **3 Colorway Graphics to Match Decor**
- **Awning Rail/Drip Molding (Both Sides)**
- **Fiberglass Front/Rear Caps**
- 30-amp Service
- 4.0kW Onan® MicroQuiet Generator (Select Models)
- 5.5kW Onan® Generator (34F)
- ABS Wheel Well Trims
- Dual Patio Receptacles

- Large Headlamps
- Mud Flaps
- Park Cable Receptacle
- Patio Awning
- Radius Roof w/Ducted A/C
- Roof A/C High Efficiency w/Solar Panel (Dual A/C on 34F)
- Roof Ladder
- Single Motor Windshield Wipers w/Wet Arm
- Spare Tire
- Steel Surface on Bulkhead

### AUTOMOTIVE

- Dual 6V w/Deep-Cycle House Batteries
- Trailer Hitch with 7-Point Electrical Hook-Up†
- Valve Stem Extenders
- Wheel Simulators

† The chassis manufacturer recommends the installation of a supplemental brake control system to activate the brakes on the vehicle or trailer you are towing. Hitch receiver ratings expressed are maximum for the hitch receiver installed and may require the purchase of additional equipment that is dependant on the weight of the towed load. Consult with hitch receiver manufacturer for further information.

### SAFETY/CONVENIENCE

- **Power Entry Step**
- Entry Assist Handle
- Entry Door w/Screen Door & Deadbolt Lock
- Porch Light (Doorside)
- Remote Heated Rear View Mirrors
- Utility Compartment w/Exterior Shower

### BODY STRUCTURE

- **Royal Tuff-Ply Roof**
- **Vacu-bond® Upper/Lower Floors**
- Aluminum Interlocking Floor/Wall/Ceiling Framing
- Basement Floor Configuration
- Coach Vibration Isolators
- Heated Water & Holding Tank Compartments
- Large, Curved Aerodynamic Bonded Windshield

### STORAGE

- **EZ-Store Compartment on Living Area Slide-Outs**
- Basement Storage
- Continuous One-Piece Compartment Bulb Seal
- Hidden, Stainless Steel Latch Rods
- Insulated Aluminum Luggage Doors w/Single Paddle Metal Latches & Stainless-Steel Hinges
- Lighted Luggage Compartments
- Rotomolded Polyethylene Luggage Compartments

**IMPORTANT – PLEASE READ:** Product information, photography and illustrations included in this publication were as accurate as possible at the time of printing. For further product information and changes, please visit our website at [www.fleetwoodrv.com](http://www.fleetwoodrv.com) or contact your local Fleetwood dealer. Prices, materials, design and specifications are subject to change without notice. All weights, fuel, liquid capacities and dimensions are approximate. Fleetwood has designed its recreational vehicles to provide a variety of uses for its customers. Each vehicle features optimal seating, sleeping, storage and fluid capacities. The user is responsible for selecting the proper combination of loads (i.e. occupants, equipment, fluids, cargo, etc.) to ensure that the vehicle's capacities are not exceeded.





## OPTIONS

### THROUGHOUT (EXTERIOR)

- 5.5kW Generator Upgrade w/Electronic Climate Control & Dual A/C (31A & 31W)
- Digital Satellite System Manual Lift/Digital Image

### BEDROOM

- Television

### DRIVER CONVENIENCE

- Dual Glazed Windows
- Rear Vision Camera
- Ultraleather™ Driver & Passenger Chairs

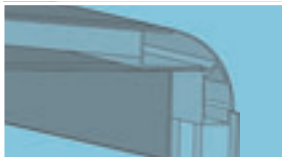
### LIVING ROOM

- DVD/VCR Combo Player
- Lounge Recliner

### AUTOMOTIVE

- 4-Point Automatic Leveling Jacks
- Ford® Chassis w/6.8L Triton® V10 Engine
- Workhorse™ Chassis w/8.1L Vortec™ Engine

## SETTING THE STANDARD IN MOTOR HOME QUALITY.



Inter-locking Ceiling-to-Sidewall Connection



Inter-locking Floor-to-Sidewall Connection



Vacu-Bond® Sidewall Construction

- Fleetwood® prototypes are exposed to thousands of miles of durability testing. Those components that don't survive are redesigned until they do. This sets our standard in safety and durability.
- Royal Tuff-Ply roofing technology is one of the most durable roofing materials on the market and also reflects sunlight to reduce chalking. White roof material minimizes heat build-up, keeping the temperature cool and comfortable.
- Reliable TuffPEX® plumbing runs throughout each vehicle creating a durable seal on all internal tubing. TuffPEX® tubing is easy to install, tough, will not crack if frozen, flexible and corrosion resistant. The TuffPEX® system is an industry leader in quality plumbing.
- For each outer wall, Fleetwood uses one seamless, solid piece of its exclusive Tuff-Coat® fiberglass composite. It resists UV rays, cracks and impacts. Our products look newer longer and that's a big plus at resale time.
- To assure a strong, weather-resistant structure, Fleetwood Vacu-bonds® all sidewalls, floors and ceilings to a durable aluminum or steel frame. The Vacu-bond® process is unmatched by many competitors.

## Weights and Measurements

### FORD®/WORKHORSE™

	31A	31W	34F
Engine Displacement (Liters)	6.8/8.1	6.8/8.1	6.8/8.1
Wheelbase (Inches)	208/208	208/208	228/228
GVWR (lbs) <sup>1</sup>	20,500/20,700	20,500/20,700	22,000/22,000
Front GAWR (lbs) <sup>2</sup>	7,000/7,500	7,000/7,500	7,500/8,000
Rear GAWR (lbs) <sup>2</sup>	13,500/13,500	13,500/13,500	14,500/14,500
Base Weight (lbs) <sup>3</sup>	16,300/16,350	16,300/16,350	17,450/17,600
GCWR (lbs) <sup>4</sup>	25,500/25,700	25,500/25,700	26,000/26,000
Hitch Rating Weight (lbs)†	5,000/5,000	5,000/5,000	5,000/5,000
Tongue Weight (lbs)†	500/500	500/500	500/500
Fuel Capacity (gal)	75/75	75/75	75/75

### DIMENSIONS AND CAPACITIES

Overall Length <sup>5</sup>	32' 2"	32' 2"	34' 8"
Overall Height (with A/C)	12' 0"	12' 0"	12' 0"
Overall Width (maximum) <sup>6,7</sup>	102"	102"	102"
Interior Height (maximum)	79"	79"	79"
Interior Width (maximum)	96"	96"	96"
Fresh Water Holding Tank (gal)	80	80	100
Grey Water Holding Tank (gal)	58	58	58
Black Water Holding Tank (gal)	42	42	42
Appliance Propane Tank (gal) (WC) <sup>8</sup>	25	25	25
Water Heater Tank (gal)	6	6	6

Liquid Weight Reference: Water (gal) = (8.3 lbs/3.8 kgs) Fuel (gal) = (6.1 lbs/2.8 kgs)  
Propane (gal) = (4.2 lbs/1.9 kgs)

Metric Conversion: Multiply pounds x 0.453 to obtain kilograms. Multiply gallons x 3.785 to obtain liters.

### CHASSIS

Model: Ford®/Workhorse™

Engine: 6.8L Triton® V10/8.1L Vortec™ V8

Horsepower: 362HP/340HP

Torque: 457 lb-ft @ 4750 RPM/455 lb-ft @3200 RPM

Transmission: 5-Speed Automatic with Overdrive/  
6-Speed Automatic with Overdrive

Alternator Amps: 130 Amp/145 Amp

Tires: 245/70R 19.5(F)/245/70R 19.5(G)

1. GVWR (Gross Vehicle Weight Rating): is the maximum permissible loaded weight of this fully loaded motor home. The GVWR is equal to or greater than the sum of the unloaded vehicle weight plus the cargo carrying capacity.
2. GAWR (Gross Axle Weight Rating): is the maximum permissible loaded weight a specific axle is designed to carry.
3. Base Weight: is the estimated weight of the motor home without fuel, options, water, cargo or passengers.
4. GCWR (Gross Combined Weight Rating): is the value specified by the motor home manufacturer as the maximum allowable loaded weight of this motor home with its towed vehicle. Towing and braking capacities may differ. Refer to Fleetwood and chassis manufacturer manuals for complete information.
5. Length taken from front bumper to rear bumper (excludes accessories).
6. Excludes safety equipment and awnings.
7. Motor homes feature a body-width over 96" which will restrict your access to certain roads. Before purchasing, you should research any state and/or province road laws which may affect your usage.
8. Tank manufacturer's listed water capacity (WC). Actual propane capacity is 80% of water listing as required by the safety code.

† The chassis manufacturer recommends the installation of a supplemental brake control system to activate the brakes on the vehicle or trailer you are towing. Hitch receiver ratings expressed are maximum for the hitch receiver installed and may require the purchase of additional equipment that is dependant on the weight of the towed load. Consult with hitch receiver manufacturer for further information.



### RV OWNERCARE\*

Limited one-year/15,000-mile coach warranty and three-year/50,000-mile structural warranty, whichever occurs first, and it is fully transferable for the first 12 months. RV OWNERCARE is one of the RV industry's most comprehensive programs and includes systems, appliances, components and construction, with no deductible and no service charge. RV OWNERCARE coverage is provided from a company that will be around in the future to service your needs. See your nearest Fleetwood dealer for a full explanation of benefits and restrictions.

### CONTACT US

To locate a dealer near you, visit our website at [www.fleetwoodrv.com](http://www.fleetwoodrv.com) or call 1-800-444-4905. We can also be contacted at Fleetwood Customer Relations, P.O. Box 1007, Decatur, IN 46733.

### FLEETWOOD TRAVELCADE CLUB

As a Fleetwood owner, you're eligible to become a member of the Fleetwood Travelcade Club. It's a perfect way to meet other Fleetwood owners who love to travel across America and share in the RV lifestyle. Call (877) 577-2560, or visit our website at [www.fleetwoodrv.com/owners\\_clubs](http://www.fleetwoodrv.com/owners_clubs) to learn more, and join the fun.

### YOUR LOCAL FLEETWOOD DEALER IS



\*For complete info see your Fleetwood dealer.

©2006. Fleetwood Enterprises, Inc.  
Printed in the USA. Inventory Control Number ST07B1, 7/06.  
Model Year 2007, First Edition.

### IMPORTANT—PLEASE READ

Product information, photography and illustrations included in this publication were as accurate as possible at the time of printing. For further product information and changes, please visit our website at [www.fleetwoodrv.com](http://www.fleetwoodrv.com) or contact your local Fleetwood dealer. Prices, materials, design and specifications are subject to change without notice. All weights, fuel, liquid capacities and dimensions are approximate. Fleetwood has designed its recreational vehicles to provide a variety of uses for customers. Each vehicle features optimal seating, sleeping, storage and fluid capacities. The user is responsible for selecting the proper combination of loads (i.e. occupants, equipment, fluids, cargo, etc.) to ensure that the vehicle's capacities are not exceeded.



treadlightly!  
LEAVING A GOOD IMPRESSION



 **FLEETWOOD**  
*Driven to Explore*