

TERRA® / TERRASE

2015

CLASS A GAS



TERRA® / TERRASE

 FLEETWOOD RV

TERRA 2015



NATURAL TAUPE

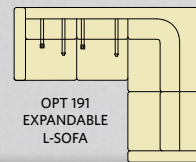
OPTIONS



OPT. 121
CONVECTION
MICRO

OPT. 084 (31TS)
19" LED TV

OPT. 084 (35K)
28" LED TV



OPT. 191
EXPANDABLE
L-SOFA

OPT. 093
EXTERIOR
ENTERTAINMENT
CENTER

OPT. 351
32" LED TV
ENTERTAINMENT
CENTER

OPT. 217
HIDE-A-LOFT
DROP DOWN
QUEEN BED 60" X 80"

TOP FEATURES

- Ford® 22,000lb chassis w/362HP V10
- One-Piece Windshield
- Fiberglass Rear Cap
- Dual ducted air conditioners w/chill grills
- LED TVs

- Hardwood Cabinet Doors w/Hidden Hinges
- Soft-Touch Ceiling
- Hide-A-Loft Drop Down Queen Bed (Optional)

- High-Gloss Exterior Fiberglass
- Full Basement Storage
- Villa® Furniture
- Solid-Surface Countertops
- Full-Body Paint (Optional)



STATELY STERLING



STANDARD

TERRA® SE 2015



LUMINOUS NIGHT

OPTIONS

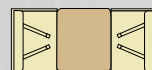
OPT. 084
BEDROOM
19" LED TV

OPT. 093
EXTERIOR
ENTERTAINMENT
CENTER

OPT. 097
BUNK AREA
19" LED TV

OPT. 157
DUAL PANEL TV'S

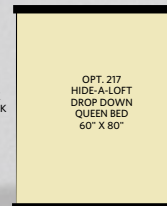
OPT. 351
32" LED TV
ENTERTAINMENT
CENTER



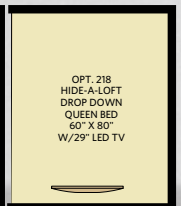
OPT. 860/864
DINETTE W/ SWING DOWN BUNK
30" X 70" DINETTE / 28" X 70" BUNK



OPT. 830
FACING DINETTE



OPT. 217
HIDE-A-LOFT
DROP DOWN
QUEEN BED
60" X 80"



OPT. 218
HIDE-A-LOFT
DROP DOWN
QUEEN BED
60" X 80"
W/29" LED TV

TOP FEATURES

- Ford® 18,000lb chassis w/362HP V10
- One-Piece Windshield
- Hardwood Cabinet Doors w/Hidden Hinges
- Composite Tile Flooring
- LED TVs

- Bunk Bed and Breakfast (31C)
- Hide-A-Loft Drop Down Queen Bed (Optional)
- High-Gloss Exterior Fiberglass
- Full Basement Storage

- Flexsteel® Furniture
- PEX Plumbing System
- Soft-Touch Ceiling

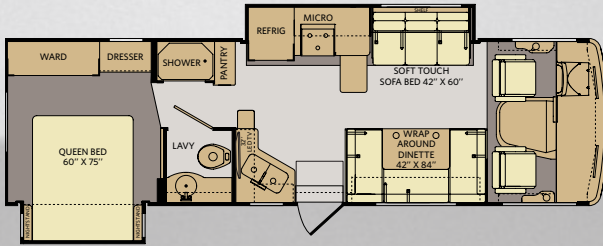


TOFFEE TANGO



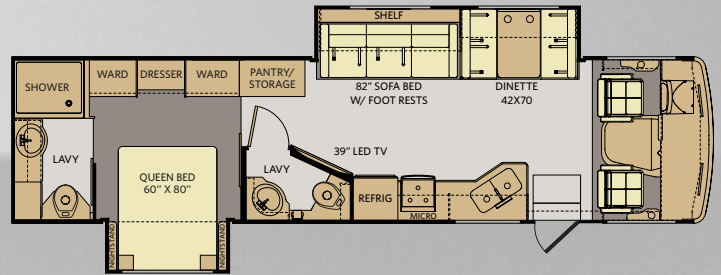
STANDARD

31TS



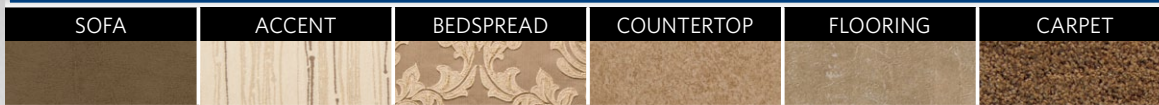
AVAILABLE OPTIONS: 084, 093, 121, 217, 351

35K

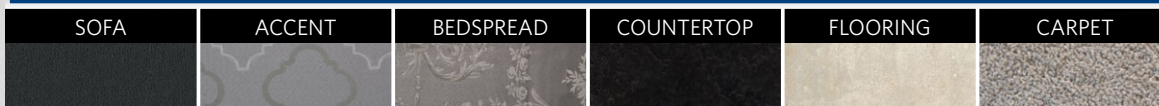


AVAILABLE OPTIONS: 084, 093, 121, 191, 217

NATURAL TAUPE



STATELY STERLING

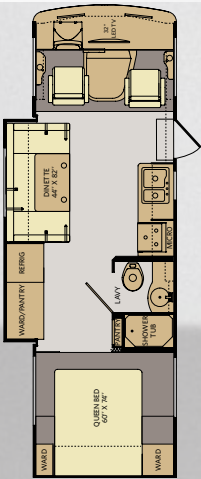


CABINETY

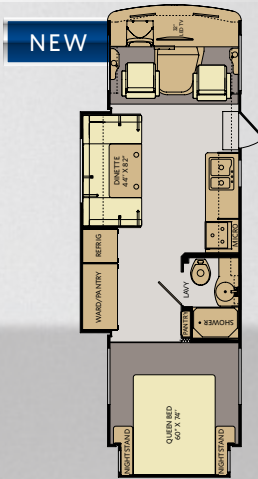
BUTTERNUT

CINNABAR

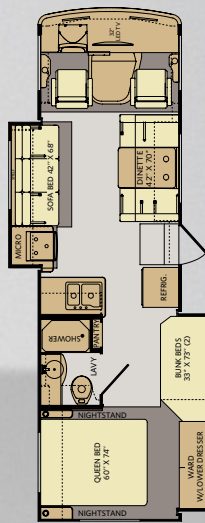
SPICE



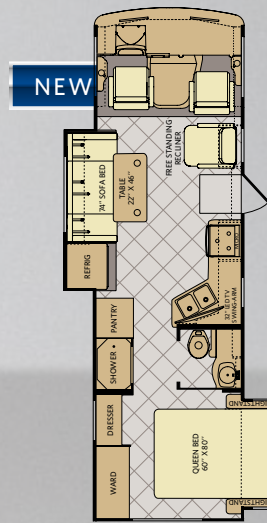
29G

Available options:
084, 093, 218, 351

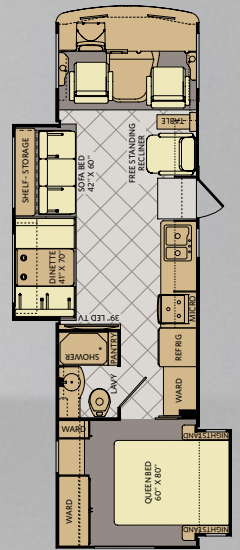
29Y

Available options:
084, 093, 218, 351

31C

Available options:
084, 093, 097, 157,
218, 351, 860, 864

31E

Available options:
084, 093, 217, 830

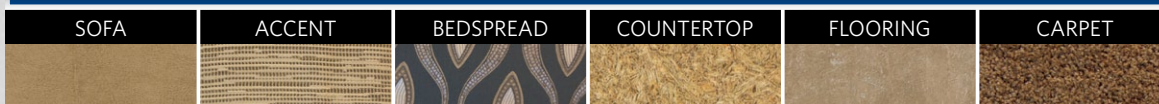
33S

Available options:
084, 093, 170, 217

LUMINOUS NIGHT



TOFFEE TANGO



CABINETY

BUTTERNUT

CINNABAR

SPICE

TERRA		
CHASSIS		
MODELS	31TS	35K
Wheelbase (inches)	208"	228"
GVWR (lbs) ¹	22,000	22,000
Front GAWR (lbs) ²	8,000	8,000
Rear GAWR (lbs) ²	15,000	15,000
GCWR (lbs) ³	26,000	26,000
Hitch Rating Weight (lbs) ^{†, ††}	5,000	5,000
Tongue Weight (lbs) [†]	500	500
Fuel Capacity (gal)	80	80

TERRA SE					
CHASSIS					
MODELS	29G	29Y	31C	31E	33S
Wheelbase (inches)	178"	178"	190"	178"	208"
GVWR (lbs) ¹	18,000	18,000	18,000	18,000	18,000
Front GAWR (lbs) ²	7,000	7,000	7,000	7,000	7,000
Rear GAWR (lbs) ²	12,000	12,000	12,000	12,000	12,000
GCWR (lbs) ³	23,000	23,000	23,000	23,000	23,000
Hitch Rating Weight (lbs) ^{†, ††}	5,000	5,000	5,000	5,000	5,000
Tongue Weight (lbs) [†]	500	500	350	350	500
Fuel Capacity (gal)	80	80	80	80	80

DIMENSIONS & CAPACITIES		
MODELS	31TS	35K
Overall Length ⁴	31' 2"	36' 2"
Overall Height (with A/C)	12'	12'
Overall Width (maximum) ^{5, 6}	102"	102"
Interior Height (maximum)	82"	82"
Interior Width (maximum)	96"	96"
Patio Awning Width	16'	18'
Interior Storage (cu. ft.)	136	74
Exterior Storage (cu. ft.)	102	127
Fresh Water Tank (gal)	60	60
Grey Water Tank (gal)	35	37
Black Water Tank (gal)	35	37
Propane Tank (gal) (WC) ⁷	14	14
Water Heater Tank (gal)	6	6

DIMENSIONS & CAPACITIES					
MODELS	29G	29Y	31C	31E	33S
Overall Length (inches) ⁴	28' 8"	28' 8"	31'	29' 11"	32' 9"
Overall Height (with A/C)	12'	12'	12'	12'	12'
Overall Width (maximum) ^{5, 6}	102"	102"	102"	102"	102"
Interior Height (maximum)	82"	82"	82"	82"	82"
Interior Width (maximum)	96"	96"	96"	96"	96"
Patio Awning Width	18'	14'	11' 5"	14'	18'
Interior Storage (cu. ft.)	125	110	116	132	138
Exterior Storage (cu. ft.)	132	132	104	185	112
Fresh Water Tank (gal)	60	60	60	60	60
Grey Water Tank (gal)	35	35	35	35	35
Black Water Tank (gal)	35	35	35	35	37
Appliance Propane Tank (gal) (WC) ⁷	14	14	14	14	14
Water Heater Tank (gal)	6	6	6	6	6

FORD® CHASSIS

Engine: 6.8L Triton V10
Transmission: Ford® 5-Speed Automatic w/Overdrive

Alternator: 175 Amp
Torque: 457 lb-ft @ 3,250 RPM
Horsepower: 362HP

FORD® CHASSIS

Engine: 6.8L Triton V10
Transmission: Ford® 5-Speed Automatic w/Overdrive

Alternator: 175 Amp
Torque: 457 lb-ft @ 3,250 RPM
Horsepower: 362HP



TERRA 31TS SHOWN IN NATURAL TAUPE DÉCOR WITH SPICE WOOD CABINETRY



TERRA SE 33S SHOWN IN LUMINOUS NIGHT DÉCOR WITH SPICE WOOD CABINETRY

Addendums

- GVWR (Gross Vehicle Weight Rating) is the maximum permissible weight of this fully loaded motorhome. The GVWR is equal to or greater than the sum of the (UVW) unloaded vehicle weight plus the (OCCC) occupant cargo-carrying capacity[†].
- GAWR (Gross Axle Weight Rating) is the maximum permissible loaded weight a specific axle is designed to carry.
- GCWR (Gross Combined Weight Rating) is the value specified by the motorhome manufacturer as the maximum allowable loaded weight of this motorhome with its towed vehicle. Towing and braking capacities may be different. Refer to Fleetwood and chassis manufacturer's manuals for complete information.
- Length measured from front bumper to rear bumper (excludes accessories).
- Excludes safety equipment and awnings.
- Motorhomes feature a body width over 96" which will restrict your access to certain roads. Before purchasing, you should research any state and/or province road laws which may affect your usage.
- Tank manufacturer's listed water capacity (WC). Actual propane capacity is 80% of water listing as required by the safety code.

[†] The chassis manufacturer recommends the installation of a supplemental brake control system to activate the brakes on the vehicle or trailer you are towing. Hitch receiver ratings expressed are maximum for the hitch receiver installed and may require the purchase of additional equipment that is dependent on the weight of the towed load. Consult with hitch receiver manufacturer for further information.

* UVW and OCCC are found on the label containing the federal certification tag in each RV.

^{††} The Minimum Towable Load of this vehicle is the available weight capacity, up to GCWR, when the coach is fully loaded to maximum GVWR. However, if the coach is loaded to something less than maximum GVWR, that extra available weight capacity can be added to your Towable Load. For example, if your coach is loaded to 1000lbs less than maximum GVWR, your Towable Load increases accordingly. Do not exceed the hitch rating weight, GVWR or GCWR.

IMPORTANT—PLEASE READ

Product information, photography and illustrations included in this publication were as accurate as possible at the time of printing. For further product information and changes, please visit our website at www.fleetwoodrv.com or contact your local Fleetwood RV dealer. Prices, materials, design and specifications are subject to change without notice. All weights, fuel, liquid capacities and dimensions are approximate. Fleetwood RV has designed its recreational vehicles to provide a variety of uses for customers. Each vehicle features optimal seating, sleeping, storage and fluid capacities. The user is responsible for selecting the proper combination of loads (i.e., occupants, equipment, fluids, cargo, etc.) to ensure that the vehicle's capacities are not exceeded.

CONTACT US

To locate a dealer near you, visit our website at www.fleetwoodrv.com or call 1-800-322-8216. We can also be contacted at Fleetwood RV Customer Relations, P.O. Box 1007, Decatur, IN 46733.

** All 2015 Fleetwood RV motorhomes include a 1-year emergency roadside assistance membership. For complete info, see your Fleetwood RV dealer.

©2014 Allied Recreation Group Inc. Printed in USA.
 Inventory Control Number TRA-TRASE15B2, 10/14. Model Year 2015, Second Edition.

FleetwoodRV.com



ALLIED RECREATION GROUP

