

TIOGA RANGER® 2013

CLASS C GAS | 



Rustic Trail

TOP FEATURES

- Glazed Hardwood Cabinet Doors with Hidden Hinges
- Bunk Bed and Breakfast Feature (Select Models)
- One-Piece Molded Front Cap
- High-Gloss Exterior Fiberglass
- Full Basement Storage
- Flexsteel® Furniture
- Radius Roof with Ducted A/C (Select Models)
- PEX Plumbing System
- Full-Body Paint (Optional)



Mocha Latte

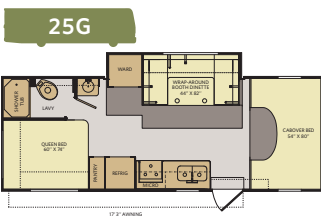


Cinnamon Cream



Standard

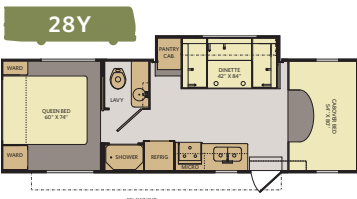
JAMOCHA EBONY	SPICED COFFEE	CABINTRY
		BUTTERSCOTCH SPICE
		TOASTED CHESTNUT



25G

Available options:
027, 079, 084, 167, 351, 664

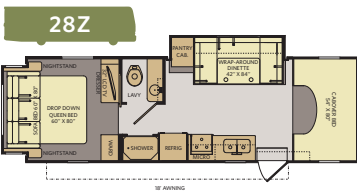
INTERIOR STORAGE CAPACITY: 102 CU. FT.
EXTERIOR STORAGE CAPACITY: 100 CU. FT.



28Y

Available options:
027, 079, 084, 167, 351, 664

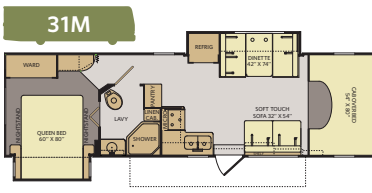
INTERIOR STORAGE CAPACITY: 93 CU. FT.
EXTERIOR STORAGE CAPACITY: 144 CU. FT.



28Z

Available options:
027, 079, 167, 351, 664

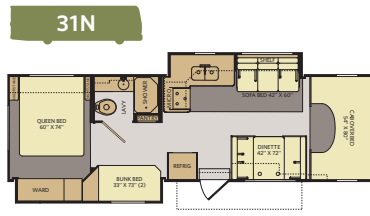
INTERIOR STORAGE CAPACITY: 126 CU. FT.
EXTERIOR STORAGE CAPACITY: 102 CU. FT.



31M

Available options:
027, 079, 084, 167, 351, 664

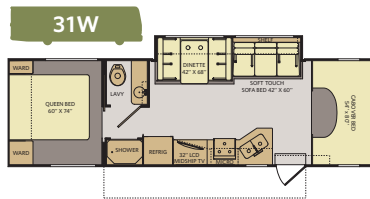
INTERIOR STORAGE CAPACITY: 126 CU. FT.
EXTERIOR STORAGE CAPACITY: 102 CU. FT.



31N

Available options:
079, 084, 097, 157, 167, 351, 860/864

INTERIOR STORAGE CAPACITY: 119 CU. FT.
EXTERIOR STORAGE CAPACITY: 104 CU. FT.

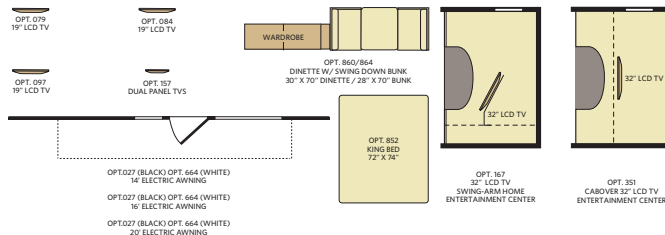


31W

Available options:
027, 084, 664

INTERIOR STORAGE CAPACITY: 74 CU. FT.
EXTERIOR STORAGE CAPACITY: 126 CU. FT.

OPTIONS



WEIGHTS & MEASUREMENTS

CHASSIS	FORD®					
MODELS	25G	28Y	28Z	31M	31N	31W
Engine Displacement (liters)	6.8	6.8	6.8	6.8	6.8	6.8
Wheelbase (inches)	176"	198"	198"	218"	214"	214"
GVWR (lbs) ¹	14,500	14,500	14,500	14,500	14,500	14,500
Front GAWR (lbs) ²	5,000	5,000	5,000	5,000	5,000	5,000
Rear GAWR (lbs) ²	9,500	9,500	9,500	9,500	9,500	9,500
GCWR (lbs) ³	19,500	19,500	19,500	19,500	19,500	19,500
Hitch Rating Weight (lbs) ⁴	5,000	5,000	5,000	5,000	5,000	5,000
Tongue Weight (lbs) ⁵	500	500	500	350	350	350
Fuel Capacity (gal)	55	55	55	55	55	55

FORD® E450 CHASSIS

Model: Ford® E450
Engine: 6.8L Triton V10
Transmission: 5-Speed Automatic w/Overdrive

Alternator: 120 Amp
Torque: 420 lb-ft @ 3,250 RPM
Horsepower: 305HP

DIMENSIONS & CAPACITIES

MODELS	25G	28Y	28Z	31M	31N	31W
Overall Length ⁴	26' 2.5"	29' 2.5"	29' 2.5"	32' 5.5"	31' 8.5"	31' 7.5"
Overall Height (with A/C)	11' 6"	11' 6"	11' 6"	11' 6"	11' 6"	11' 6"
Overall Width (maximum) ^{5,6}	102"	102"	102"	102"	102"	102"
Interior Height (maximum)	82"	82"	82"	82"	82"	82"
Interior Width (maximum)	96"	96"	96"	96"	96"	96"
Fresh Water Holding Tank (gal)	50	50	50	60	60	60
Grey Water Holding Tank (gal)	37	37	37	35	35	37
Black Water Holding Tank (gal)	36	37	37	35	35	36
Appliance Propane Tank (gal) (WC) ⁷	14	14	14	14	14	14
Water Heater Tank (gal)	6	6	6	6	6	6

Liquid Weight Reference:

Water (gal) = (8.3 lbs/3.8 kgs) Fuel (gal) = (6.1 lbs/2.8 kgs) Propane (gal) = 4.2 lbs/1.9 kgs

Metric Conversion:

Multiply pounds x 0.453 to obtain kilograms. Multiply gallons x 3.785 to obtain liters.
 Multiply liters x 61 to obtain cubic inches.



CONFIGURE A COACH THE WAY YOU WANT!

COLORS • FLOOR PLANS • OPTIONS • DÉCOR

www.FLEETWOODRV.COM



FLEETWOOD RV IS AN ALLIED SPECIALTY VEHICLE COMPANY.

Addendums

- GVWR (Gross Vehicle Weight Rating) is the maximum permissible weight of this fully loaded motor home. The GVWR is equal to or greater than the sum of the (UVW) unloaded vehicle weight plus the (OCCC) occupant cargo-carrying capacity*.
- GAWR (Gross Axle Weight Rating) is the maximum permissible loaded weight a specific axle is designed to carry.
- GCWR (Gross Combined Weight Rating) is the value specified by the motor home manufacturer as the maximum allowable loaded weight of this motor home with its towed vehicle. Towing and braking capacities may be different. Refer to Fleetwood and chassis manufacturer's manuals for complete information.
- Length measured from front bumper to rear bumper (excludes accessories).
- Excludes safety equipment and awnings.
- Motor homes feature a body width over 96" which will restrict your access to certain roads. Before purchasing, you should research any state and/or province road laws which may affect your usage.
- Tank manufacturer's listed water capacity (WC). Actual propane capacity is 80% of water listing as required by the safety code.

† The chassis manufacturer recommends the installation of a supplemental brake control system to activate the brakes on the vehicle or trailer you are towing. Hitch receiver ratings expressed are maximum for the hitch receiver installed and may require the purchase of additional equipment that is dependent on the weight of the towed load. Consult with hitch receiver manufacturer for further information.

* UVW and OCCC are found on the label containing the federal certification tag in each RV.

†† The Minimum Towable Load of this vehicle is the available weight capacity, up to GCWR, when the coach is fully loaded to maximum GVWR. However, if the coach is loaded to something less than maximum GVWR, that extra available weight capacity can be added to your Towable Load. For example, if your coach is loaded to 1000lbs less than maximum GVWR, your Towable Load increases accordingly. Do not exceed the hitch rating weight, GVWR or GCWR.

IMPORTANT—PLEASE READ

Product information, photography and illustrations included in this publication were as accurate as possible at the time of printing. For further product information and changes, please visit our website at www.fleetwoodrv.com or contact your local Fleetwood RV dealer. Prices, materials, design and specifications are subject to change without notice. All weights, fuel, liquid capacities and dimensions are approximate. Fleetwood RV has designed its recreational vehicles to provide a variety of uses for customers. Each vehicle features optimal seating, sleeping, storage and fluid capacities. The user is responsible for selecting the proper combination of loads (i.e., occupants, equipment, fluids, cargo, etc.) to ensure that the vehicle's capacities are not exceeded.

CONTACT US

To locate a dealer near you, visit our website at www.fleetwoodrv.com or call 1-800-322-8216. We can also be contacted at Fleetwood RV Customer Relations, P.O. Box 1007, Decatur, IN 46733.



** All 2013 Fleetwood RV motorhomes include a 1-year emergency roadside assistance membership. For complete info, see your Fleetwood RV dealer.

©2012 Fleetwood RV Inc. Printed in USA. Inventory Control Number TIRGR13F1, 04/12. Model Year 2013, First Edition.