

NEXT LEVEL®  
2008



HOLIDAY RAMBLER®

*This is Living®*

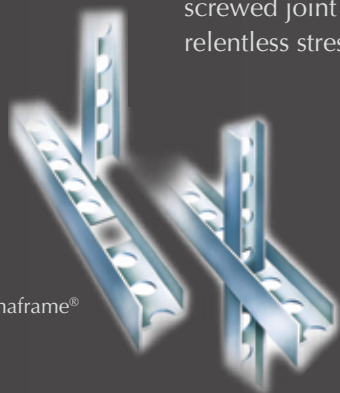




NEXT LEVEL®



The Next Level fifth wheel features Holiday Rambler's exclusive Alumaframe® Superstructure. Our revolutionary system of aluminum H and C-Channel crossmembers runs the entire length of the unit, with double-welded intersections for added strength. This rigid design is both lighter and sturdier than wood or tubular aluminum frames – and much more reliable than butt-welded or screwed joint designs. From dirt roads to potholes, you can count on Alumaframe® to handle the relentless stresses of the road and provide superior structural integrity for many years to come.



Alumaframe®



Wood

Aluminum  
(Butt-Welded)

Alumaframe®  
(C-Channel)



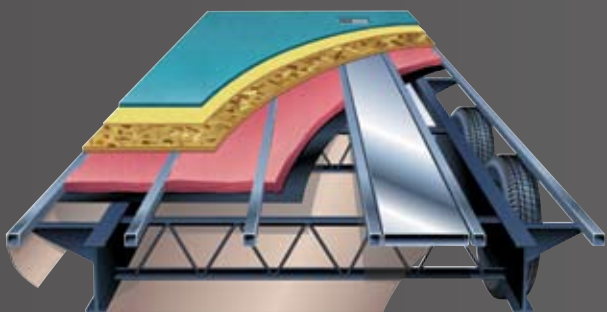
#### 9-LAYER ROOF (top to bottom)

- Peaked roof with BriteTek™ roof material
- Luaun backer
- Thick, tapered bead foam insulation
- Aluminum double I-beam superstructure filled with fiberglass insulation
- Vapor barrier
- Structure foam: thermal insulative barrier
- Vapor barrier
- Luaun backer
- Vinyl ceiling

## STAY COOL ON THE INSIDE

Holiday Ramblers are cooler than other RVs – literally. When put to the test in a thermal chamber, temperatures inside other RVs rose almost 30% more every hour than the Holiday Rambler model.\* The secret lies in our exclusive, multi-layer insulation which blocks heat out, keeping the inside nice and cool.

\* Test performed by an independent testing facility, Based on measurements taken every 15 minutes.

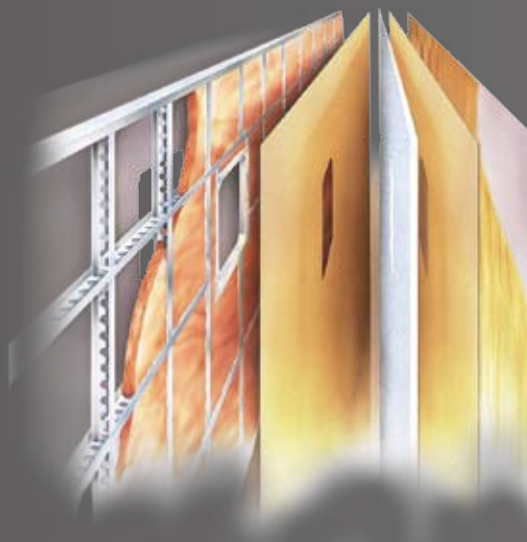


### 6-LAYER FLOOR: "WORKS IN THE BASEMENT"

The underside of your fifth wheel features a 6-layer floor and a fully enclosed, heated and protective underbelly. The underbelly encloses the wiring harness and fresh water tanks. It helps protect the fluids from freezing and improves the overall insulation of the coach. The underbelly's outer shell is made of rugged composite material that withstands damage from road debris. By smoothing out the undercarriage, the underbelly provides an unrestricted air flow that results in easier towing and improved gas mileage. In addition, the frame is coated with a rust-inhibiting, electro deposit ion coating.

### 6-LAYER EXTERIOR WALL (left to right)

- Smooth .040 aluminum is standard; high-gloss gel coat fiberglass is optional
- Interlocking C-Channel filled with 1-1/2" fiberglass insulation bonded in place so it doesn't sag or leave spaces uninsulated
- Vapor barrier
- Bead foam adds comfort, saves energy and provides a thermal insulative barrier
- Vapor barrier
- Interior paneling







## BODY CONSTRUCTION: FEATURES

- 102" Wide Body
- Alumaframe Construction
- Z-Frame Platform  
(N/A: 30SK, 34SKS, 35SKS, 38SKS)
- Smooth .040 Aluminum Exterior Walls
- Front Molded Fiberglass Cap
- 3/8" Foam Core, Thermal Barrier Laminated Sidewall Structure
- Spare Tire Prep with Carrier Frame Recessed into Underbelly
- 1-1/2" Steel Framed Sub-Floor
- Steel Framed and Insulated Bathroom Floor
- 9-Flush Mounted Tie-Downs - 2500 lb Capacity
- Polished Anodized Diamond Plate Cargo Wall Protector
- Aluminum Roof Structure with Double I-Beam Roof Rafter 16" On-Center
- 9-Layer Roof and 6-Layer Sidewall Construction
- Brite TEK™ Exterior Roof Material
- Shock Absorbers
- 15" Radial Tires (N/A: 30SK)
- Stylized 15" Aluminum Wheels with Chrome Center Hub
- Enclosed and Heated Underbelly
- PVC Floor in Alcove Storage Area (N/A: 30SK, 34SKS, 35SKS, 38SKS)
- Linoleum Flooring in Alcove Storage Area (30SK, 34SKS, 35SKS, 38SKS)
- Gel Coat, Insulated Oversized Exterior Storage Door with Gas Struts (N/A: 30SK, 34SKS, 35SKS, 38SKS)
- Beaver Tail Floor
- 2500 lb. Rated Ramp Door

## OPTIONS

- Recessed Spare Tire with Sport Wheel
- Flip Over Transition Ramp
- Smooth Gel Coat Fiberglass Sidewalls
- Electric Winch - With Tether Remote (30SK, 34SKS, 35SKS, 38SKS)

## APPLIANCES AND ACCESSORIES: FEATURES

- 8 cu.ft. 2-Way Refrigerator
- Raised 6 Panel Wood Refrigerator Door Insert
- High Output 3-Burner Range with Oven
- Microwave with Touch Control
- Roll-Out Pantry with Cabinet with 3 Baskets (N/A: 30SK, 34SKS, 35SKS)
- 23" LCD Color TV with Remote and Mounting Brackets Living Area (38SKD)
- 27" LCD Color TV with Remote and Mounting Brackets Living Area (N/A: 38SKD)
- 14.5" LCD Color TV with Remote Control in Bedroom
- Satellite Radio
- Cargo Electric Queen Bed with 2-24" Flush Mount Clothes Hangers (N/A: 38FKD, 38SKD)
- Cargo Double Electric Queen Bunk Bed with Fold-Over Sofa with 2-24" Flush Mount Clothes Hangers (N/A: 38FKD, 38SKD)
- Built in Vacuum with Deluxe Tools

## OPTIONS

- 10 cu. ft. 2 way Refrigerator
- Convection Microwave

## FURNITURE: FEATURES

- Queen Bed in Slide-Out with Front Wardrobe and Chest of Drawers (N/A: 30SK)
- Queen Bed with Shirt Closet and Nightstand (30SK)
- Polyethylene Indoor/Outdoor Table (N/A: 38FKD, 38SKD)
- One (1) 76" Flip-Over Jackknife Sofa with Quick Release and Embroidered Logo - Road Side (N/A: 38FKD, 38SKD)
- One (1) Jackknife Sofa - Roadside (38FKD, 38SKD)
- Two (2) 24" Flush Mount Clothes Hangers
- One (1) Booth Dinette (38FKD, 38SKD)
- 40" x 60" Flip-Over Jackknife Dinette with Quick Release and Embroidered Logo - Curbside (N/A: 38FKD, 38SKD)
- Hide-A-Bed Sofa (38FKD, 38SKD)
- Second Flip-Over Jackknife Sofa with Quick Release and Embroidered Logo - Road Side (N/A with Cargo Electric Bed option)
- Flip-Over Jackknife Sofa in Cargo Area with Quick Release and Embroidered Logo - Road Side (38FKD, 38SKD)
- Two (2) Additional Barrel Chairs (34SKS, 35SKS, 38SKS)

## OPTIONS

- Queen Bed Slide-Out with Chest of Drawers, Decorative Slide-out Fascia and Overhead Storage (38FKD, 38SKD)

## WINDOWS / DOORS AND AWNINGS: FEATURES

- Checkered Flag Texturized Fabric Awning
- Tinted Skylight in Bathroom
- Window in Stool Room (N/A: 30SK, 34SKS, 35SKS)
- Dual Pane Windows
- Rear Entry Door (N/A: 30SK, 34SKS, 35SKS)
- Electric Patio Awning with Metal Cover
- Slide-Out Awning (N/A: 30SK, 34SKS, 35SKS)
- Kitchen Slide-out Cover (38SKD)
- Bedroom Slide-out Cover (N/A: 30SK)
- Rear Door Awning
- Swing-Out Entry Door Handle

**ELECTRICAL SYSTEMS AND LIGHTS: FEATURES**

- 12V Sirius Ready AM/FM Weather Band Receiver with CD/DVD Player with 4 Interior 3-Way Speakers, 2 Polypropylene Waterproof Marine Speakers, 720 watt Amplifier, 10" Subwoofer and Interior/Exterior RF Remote Capability
- Electrical Management System (50AMP/12V With 55 AMP Conv.)
- Four (4) Exterior Recessed Docking Lights
- LED Tail Lights
- Disconnect and Battery Box
- Cable TV, Telephone and Electrical Outlet Hook-up in Basement Storage
- Cable TV/DSS/VCR Ready with Video Box
- Solar Prep
- TV Antenna with Cable Box
- Emergency Pump Station Shut-Off Switch (with Optional Pump Station)
- Dual Exterior Cable/Satellite Receptacle

**OPTIONS**

- One 12v Deep Cycle Battery with Disconnect
- Two 12v Deep Cycle Battery with Disconnect
- Inverter - 600 watt (Requires Two Batteries)
- Generator Prep 5.5KW-20 gal\*\* Fuel Tank, Remote Switch with Hour Meter, Fuel Gauge
- 5.5 kw Marquis Gold Gas Onan Generator with 20 gallon\*\* Tank (Prep Required)
- Door Side Pump Station with 40 Gallon Tank, Timer Switch and Fuel Gauges in Utility Center

**INTERIOR: FEATURES**

- Newport Cherry Cabinets
- Laminate Kitchen Countertop - Galley and Lavatory
- Linoleum in Kitchen, Bath and Entry
- Utility Center by Entrance Door (Systems Monitor Panel, Water Pump, Water Heater, S/O Switches, Fuel Pump Timer, Gauges and Exterior Light Switches)

**OPTIONS**

- Decors: Cactus, Coffee
- Kitchen Countertop Extension
- Surged Carpet for Cargo Area (N/A: 38FKD, 38SKD)
- Cargo Privacy Screen (Standard on 38SKD)
- Utility Center - Folding Table with Shelves (Available with Divider Wall) (N/A: 30SK, 35SKS, 38SKS)

**PLUMBING AND L.P. SYSTEMS: FEATURES**

- Large Stainless Steel Kitchen Sink with Brushed Nickel Single Handle Pull-out Faucet
- 10-Gallon L.P. Gas/Electric Water Heater with Electronic Ignition (DSI)
- Stainless Steel Bathroom Sink with Brushed Nickel Faucet
- Brushed Nickel Shower Hose and Head
- ABS Tub/Shower with Curtain (38SKS)
- ABS Shower with One-Piece Surround and Curtain (N/A: 38SKS)
- Lighted Water management System with Drain, Spray-Port Water Sprayer with 15' Polyurethane Hose, Outside Shower with Hot and Cold, Soap Dispenser, Paper Towel Holder
- Water Heater By-pass Kit

- No-Fuss Flush Holding Tank Rinsing System
- Two 30 lb. L.P. Tanks with Automatic Changeover and Cover

**OPTIONS**

- Shower with Sliding Glass Door (38SKS)
- ABS Shower with One-Piece Surround with Glass Door (38SKS)

**HEATING, VENTS AND AIR CONDITIONING: FEATURES**

- One Carrier 13,500 BTU Rooftop Air Conditioner with Dehumidifier and Remote Control
- 35M BTU Hydroflame Electronic Ignition Furnace (30SK)
- 40M BTU Hydroflame Electronic Ignition Furnace (N/A: 30SK)
- Ducted Heating System
- Wire Prep and Ducting for 2nd A/C with Optional 50 amp Service

**OPTIONS**

- One Carrier 15,000 BTU Rooftop A/C ILO 13,500 BTU with Dehumidifier and Remote Control
- Second Carrier 13,500 BTU Rooftop A/C with Dehumidifier and Remote Control in Cargo Area (Requires 50 amp Service Opt.)

**WINDOWS TREATMENTS: FEATURES**

- Pleated Day/Blackout Shades in Living Area and Bedroom (N/A: 30SK, 34SKS, 35SKS, 38SKS)

**ADVANTAGE PACKAGE**

- 5 Year Structural Warranty
- Z-Frame Construction (N/A: 30SK, 34SKS, 35SKS, 38SKS)
- Alumaframe Superstructure
- Steel Framed Floor
- Recessed Spare Tire Carrier
- Alaskan Package (Enclosed and Heated Underbelly, Heated Alcove Storage Area, Insulated Bathroom Floor, 9-Layer Roof and 6-Layer Sidewall)
- Independent Front Power Landing Jacks (N/A: 30SK, 34SKS, 35SKS)
- Polished Anodized Diamond Plate Cargo Wall Protector
- Heavy Duty Protective PVC Flooring in Cargo Area

Due to continuous product improvement, please see the website for the latest in standards and options, specifications, and technical data. Go to [www.holidayrambler.com](http://www.holidayrambler.com).



# NEXT LEVEL®



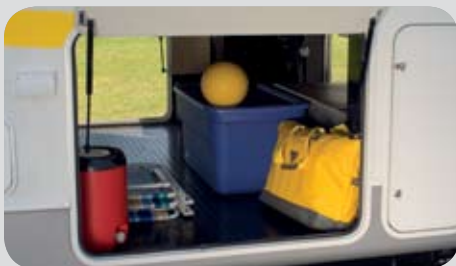
You'll find plenty of storage throughout the Next Level, including new cabinets in the loft area (available on select floorplans).



Add a lightweight, corrosion-resistant, 40-gallon aluminum fuel tank so you're always ready to roll.



Add the cargo screen to let in fresh air without bringing in dirt, dust and bugs.



The Next Level's new Z-Frame Superstructure creates 122 cubic feet of unobstructed pass-through storage. So there's room for all your gear — and then some.



Two weatherproof exterior speakers mean you can keep the music going as you're loading, fueling-up or just kicking back under the stars.



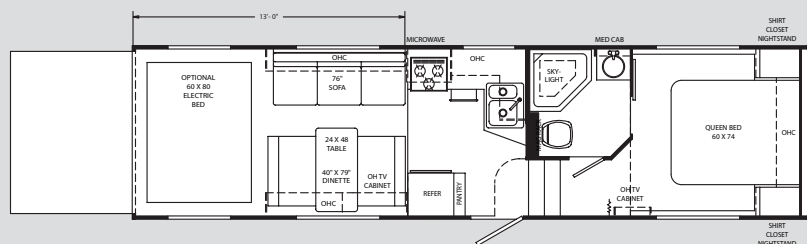
The optional built-in vacuum keeps all your floors clean, from the kitchen linoleum to the bedroom carpet. And it makes getting rid of dust and sand in the cargo area easy, too.

Weights*	30SK	34SKS	35SKS	38SKS	38FKD	38SKD
Gross Vehicle Weight Rating	16,950	16,950	16,950	16,950	18,000	18,000
Hitch Weight	2,120	2,770	2,795	2,868	3,050	2,950
Axle(s) Weight	5200 (3)	5200 (3)	5200 (3)	5200 (3)	5200 (3)	5200 (3)
Unloaded Vehicle Weight	9,710	10,910	11,050	11,030	12,570	13,750
Net carrying Capacity (NCC)	7,240	6,040	5,900	5,920	5,430	TBD
Tire Size and Load Range	15" D	15" D	15" D	15" D	15" D	15" D
Measurements						
Overall Length	32' 6"	35' 6"	37' 10"	39' 10"	39' 10"	39' 10"
Overall Height (Including A/C)	12' 8"	12' 8"	12' 7"	12' 9"	13'	13'
Exterior Width	102"	102"	102"	102"	102"	102"
Tank Capacities						
Water Heater	10	10	10	10	10	10
Grey Tank	50	50	50	50	50/50	50/50
Black Tank	50	50	50	50	50	50
Fresh Tank (2 - 65 gallon)	130	130	130	130	130	130
L.P. Tank**	30 (2)	30 (2)	30 (2)	30 (2)	30 (2)	30(2)

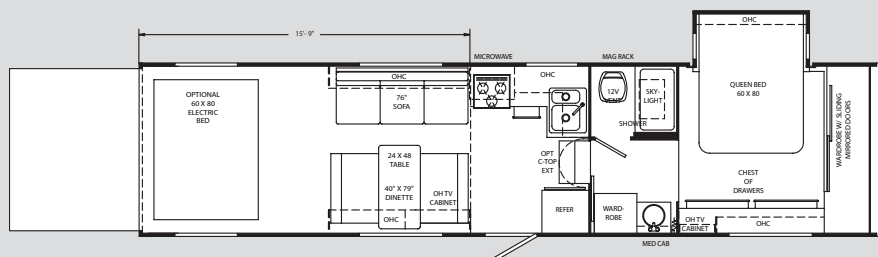
\* Weights may vary by options.

\*\* Tank manufacturer's listed water capacity (WC). Actual filled LP capacity is 80% of listing due to safety shut off required on tank.

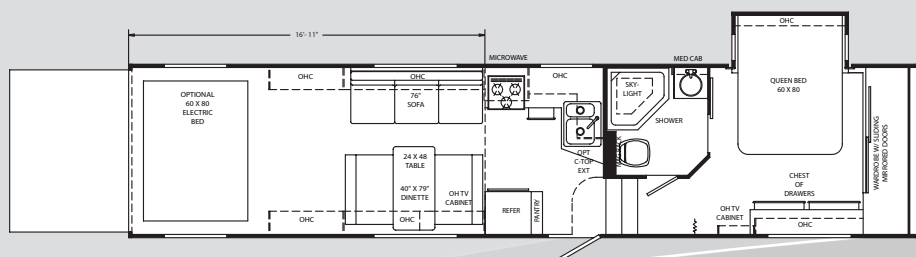
The actual overall length of the recreational vehicle may differ from that indicated in the brochure due to variances in the manufacturing process and/or installed components. The actual length may be greater or less than that indicated. Due to the large variety of options and floorplan arrangements available to our customers, actual weights for each unit can differ significantly. Holiday Rambler provides a weight sticker on each unit we produce which includes that unit's tank capacities and approximate weight. Consult your local Holiday Rambler dealer for unit availability and further information. The information printed in this brochure reflects product design, fabrication, and component parts at the date of printing. The manufacturer reserves the right, at any time, to make changes in product design or material or component specifications as its sole option, without notice. This includes the substitution of components of a different brand or trade name which will result in comparable performance. All information printed in this brochure is subject to change after the date of printing. Some features shown or mentioned in this brochure are optional and may only be available in selected floorplans. Photographs may show props or decorations that are not standard equipment on Holiday Rambler models. Holiday Rambler, the Holiday Rambler logo and its design, are registered trademarks. All other products and company names are trademarks and/or registered trademarks of their respective holders. While the color of the motorhome's exterior and the interior fabrics depicted in this sales brochure are fair and reasonable depictions, the colors depicted may not be an exact match of the actual colors because of the variances in photo-processing and variances caused by inserting the photographs within the sales brochure. Due to product improvements, changes during the model year and/or transcription errors that may occur, information represented within this brochure may not be accurate at the time of your purchase. If certain information is significant to your purchasing decision, please confirm the information with your dealer prior to submitting your order. Component part and appliance manufacturers issue limited warranties covering those portions of the recreational vehicle not covered by the Limited Warranties issued by Monaco Coach Corporation. To learn which specific component parts and appliances are excluded from the Limited Warranties issued by Monaco Coach Corporation, please contact your selling dealership or Monaco Coach Corporation directly, or review the warranty packet inside the recreational vehicle.



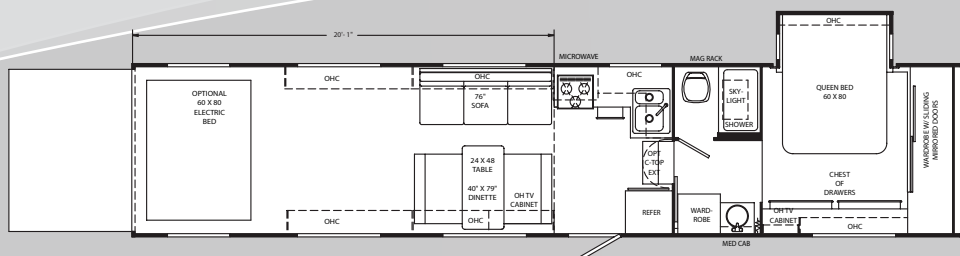
30SK



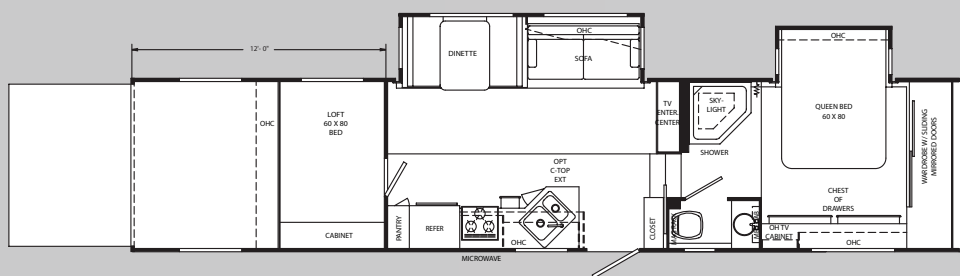
34SKS



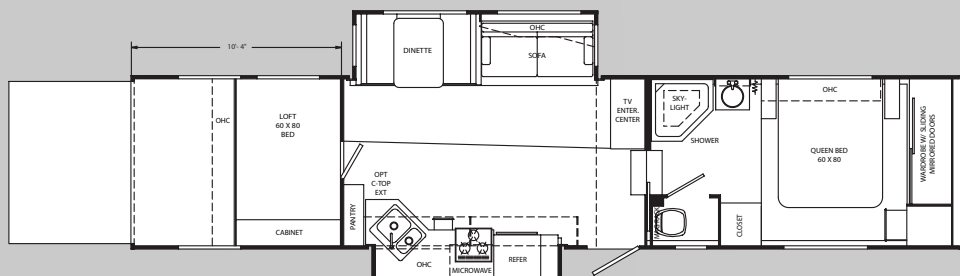
35SKS



38SKS



38FKD



38SKD





NEXT LEVEL®  
2008

## BEING DIFFERENT MAKES ALL THE DIFFERENCE.

At Monaco Coach Corporation, we always strive to be the best. And that means thinking outside the box. Giving you more of what you want in an RV. Like our exclusive Roadmaster chassis. PanaSuite™ full-wall slides. And programs like Monaco Financial Services and 24/7 roadside assistance. No other manufacturer can match Monaco's offerings. No one even comes close. Why not discover the difference for yourself? Visit [www.monacodifferent.com](http://www.monacodifferent.com)

**"No other manufacturer can match Monaco's offerings.  
No one even comes close."**



*Kay*  
KAY TOOLSON, CEO

### WARRANTIES

12 MONTH basic limited warranty

5 YEAR limited warranty on aluminum or steel frame  
structure of sidewall, roof, front and rear cap

Applies to certain models. See owner's manual for complete details.



ASSISTANCE

SALES • TECH • ROADSIDE



WE'RE HERE. ANYTIME, EVERY TIME.

- Reach us anytime — literally — via our live customer support line.
- Drive in to one of our 350 Service Centers.
- Enjoy the first year free when you enroll in our Owner Advantage Roadside Assistance Program.
- See where it all begins with a tour of one of our facilities in Indiana or Oregon. Call 1-800-650-7337 or 1-800-634-0855 to find out more.



HOLIDAYRAMBLER.COM

Log on to our website anytime, night or day. It's your link to everything Holiday Rambler, including product news and updates, club events, dealer and service center info and much more. Take it for a test drive today.

606 Nelson's Parkway Wakarusa, IN 46573  
[www.holidayrambler.com](http://www.holidayrambler.com) | 800-245-4778



HOLIDAY RAMBLER®

*This is Living®*



MONACO COACH CORPORATION



Monaco is traded on the New York Stock Exchange under the listing MNC.  
© 2007, Monaco Coach Corporation 07/07 HR\_08NEXTL Litho in USA.