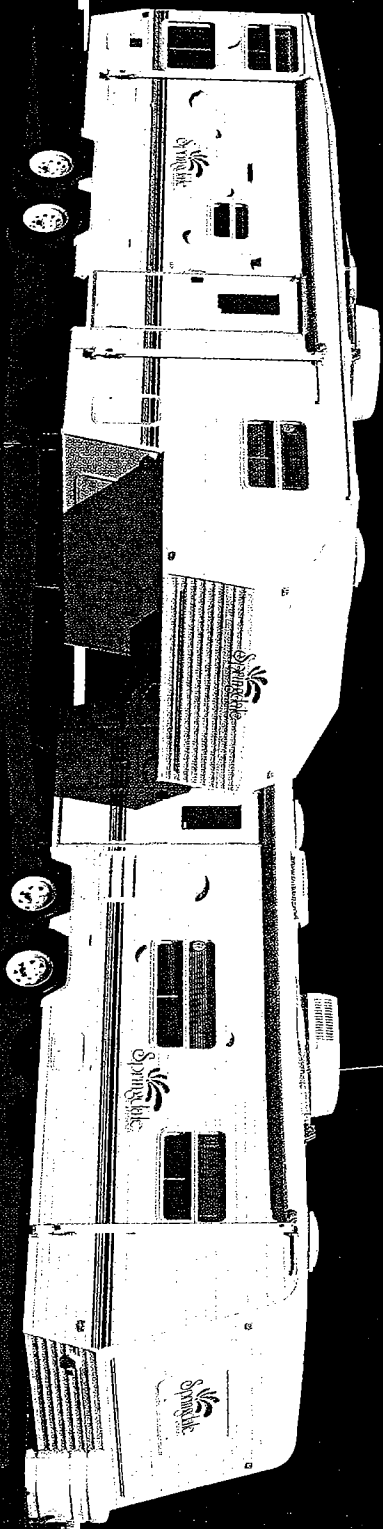


Springdale™ *2000*

by Keystone






At your request . . .

Travel Trailers & Fifth Wheels



Springdale[™]
by Keystone

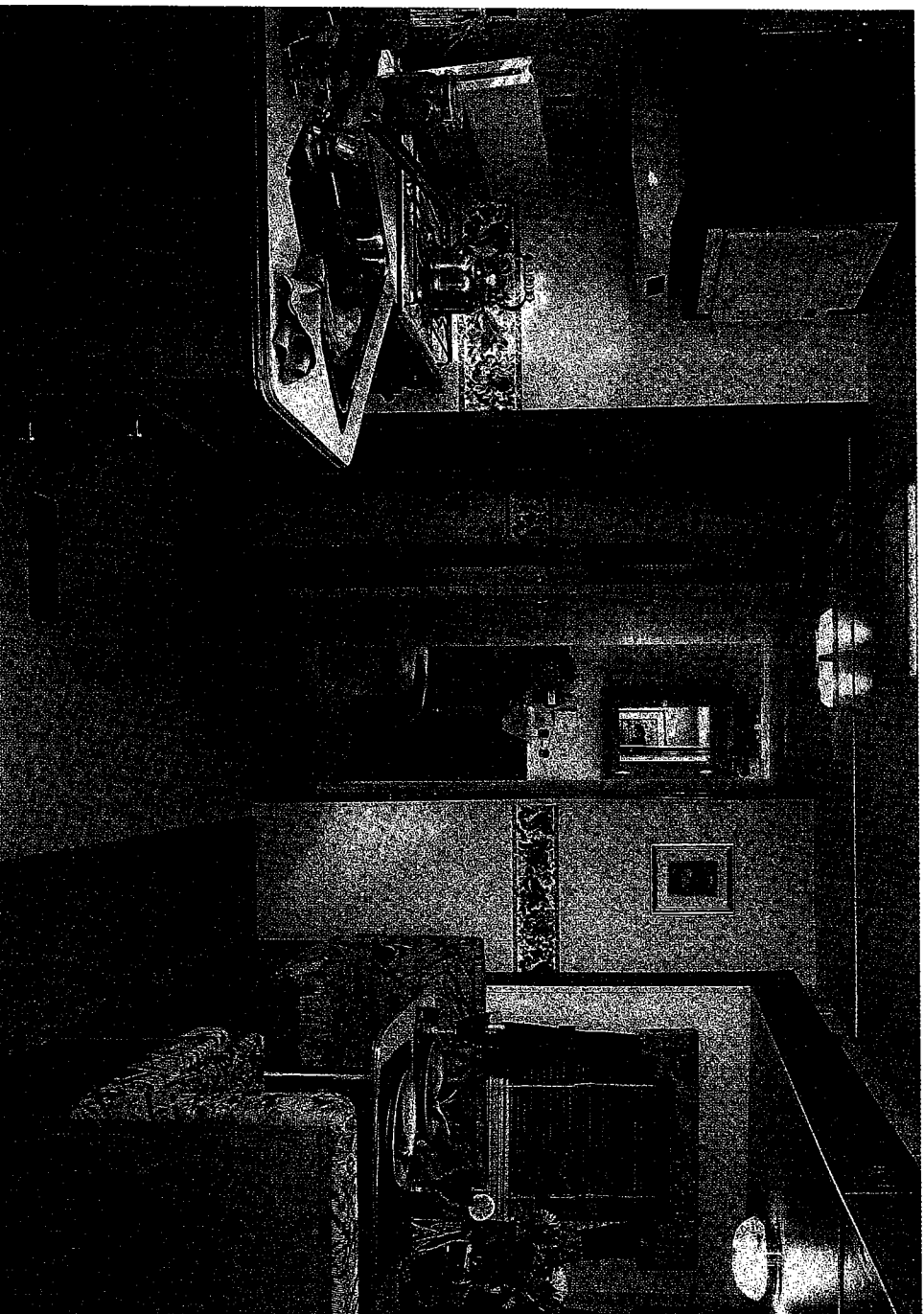


Comfort

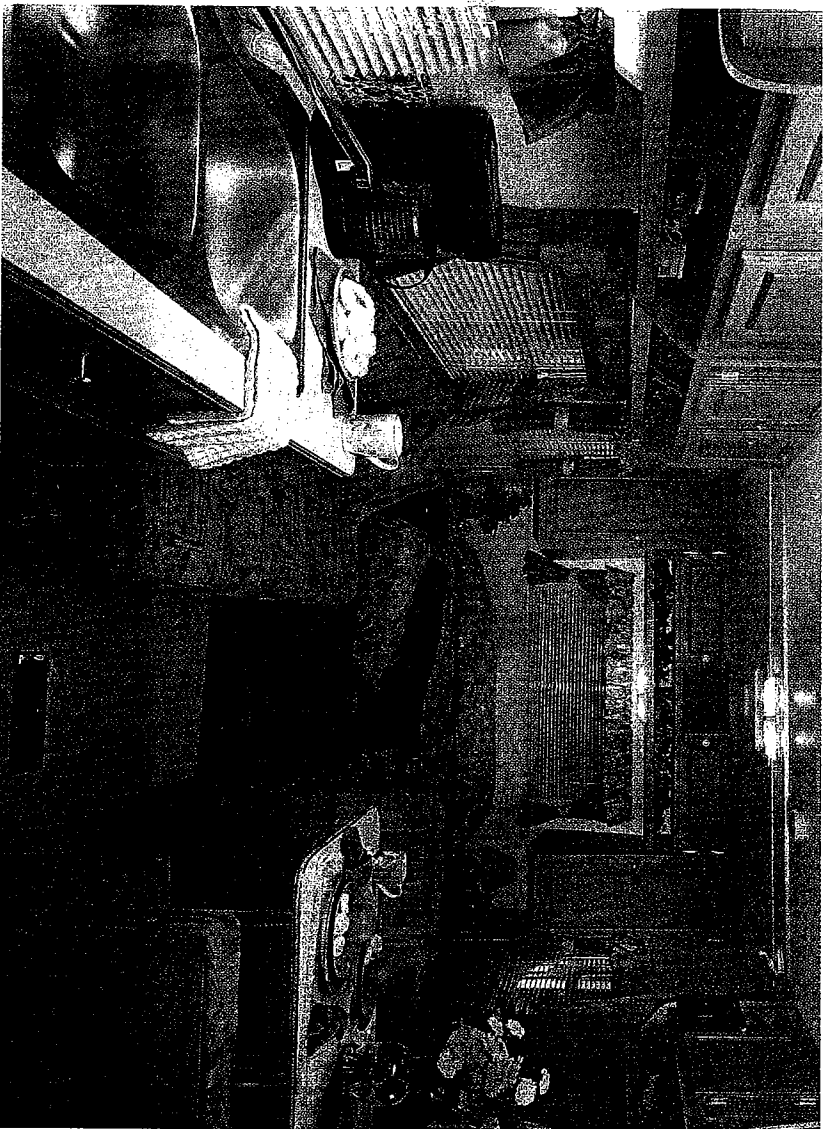
If you think
the RV life style is
“roughing it,”
look at the beautiful
Springdale...
and think again.

With Springdale, traveling is comfortable, easy, and carefree. From ease of towing to the many interior details you've said you are looking for, the Springdale line of travel trailers and fifth wheels delivers the best value, dollar for dollar, on the market today.

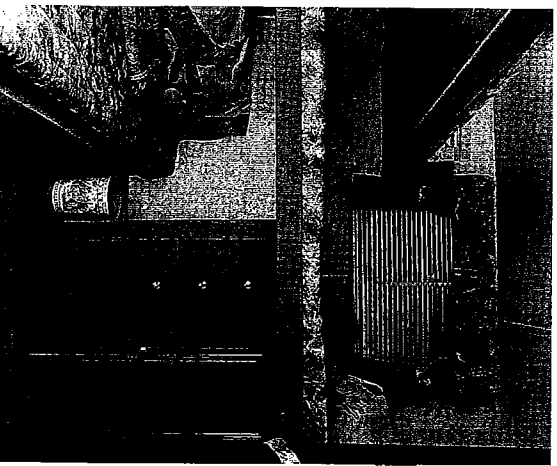
Created with Keystone integrity from the inside out, Springdales are built for permanence with residential construction methods like solid floors, studs on 16" centers, engineered truss roof rafters, and floor-ducted heating. Sturdy exterior features like the triple-sealed, one-piece roof and the flush-mounted rock-guard front awning keep your Springdale beautiful even after the most rugged outdoor adventure. It's time to come home to Springdale.



The 295 BHLGL Springdale Travel Trailer Floorplan with Slide-Out Sofa and Dinette. You'll enjoy designer touches like the wood-grained slide-out face and upholstered valances, and full-height overhead cabinets with integrated open shelves. Style and comfort can be affordable, and Springdale proves it!

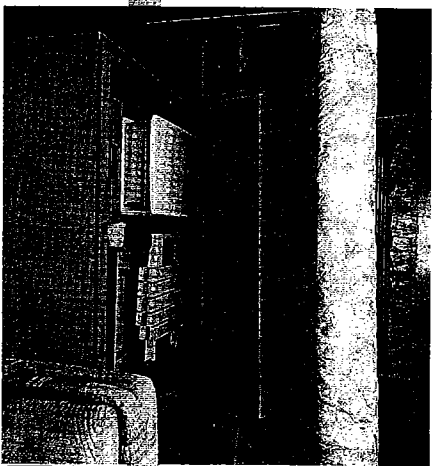


Choose your Springdale from a wide variety of floorplans. Shown here, the open floorplan of the 245 FBL offers space, comfort and features usually found only in much higher priced models. Springdales are available in five stylish interior color schemes. And the easy-care fabrics, counters, and floor coverings allow you to focus on the important things of life...



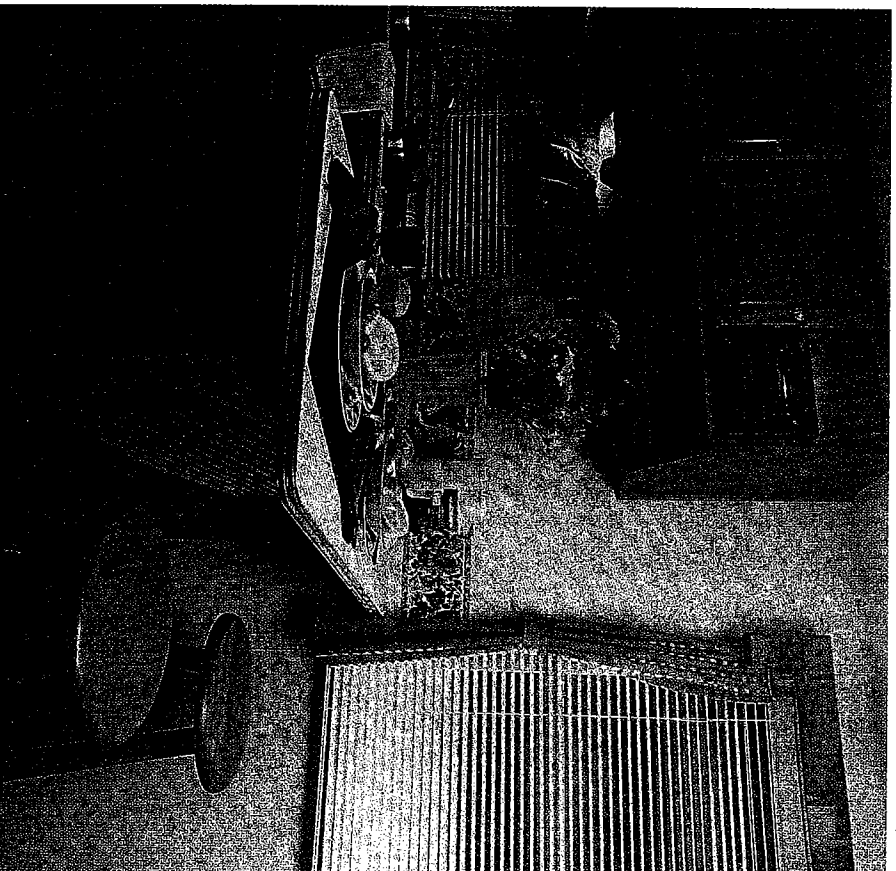
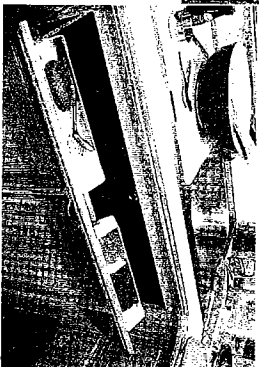
Large families love our triple bunk, 290 3BL Floorplan. It sleeps nine, and there's always ample wardrobe space. There are five drawers in the bedroom alone.

Barstool Option, available in the 295BHLGL and 370BHLGL Travel Trailers and the 245FWRLLS Fifth Wheel. Notice how this option allows extra counter space, a priority in our designs because you've said that's what you are looking for.



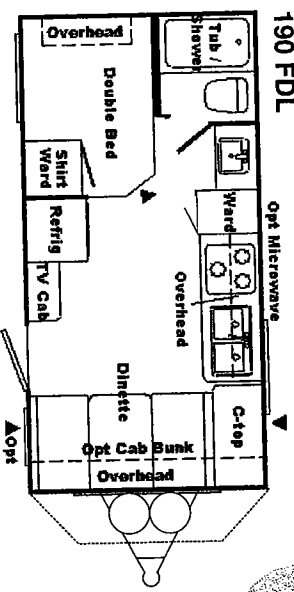
You'll love the convenience of these tip-out trays under the sink area. Don't you wish you had these at home?

Underbed Storage is part of Springdale's easy life. Here's where you'll place large items and anything you don't want to bend or fold, with no water tanks to get in your way.

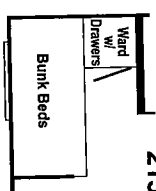


Travel Trailer Floorplans

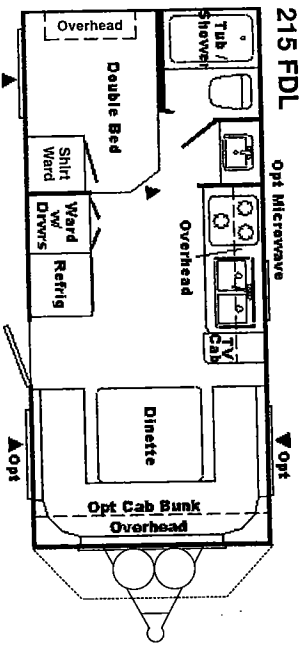
190 FDL



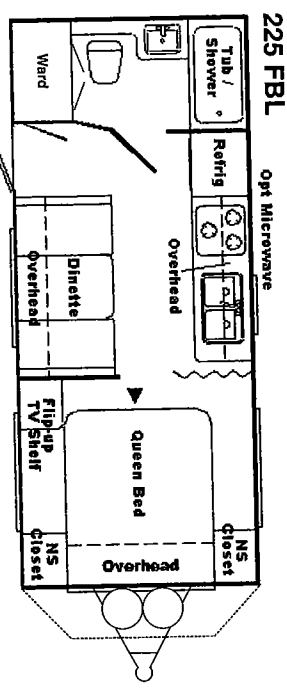
Opt. Bunks: 190 FDL
215 FDL



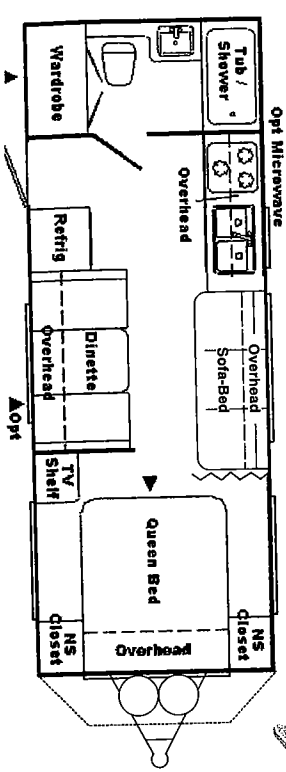
215 FDL



225 FBL



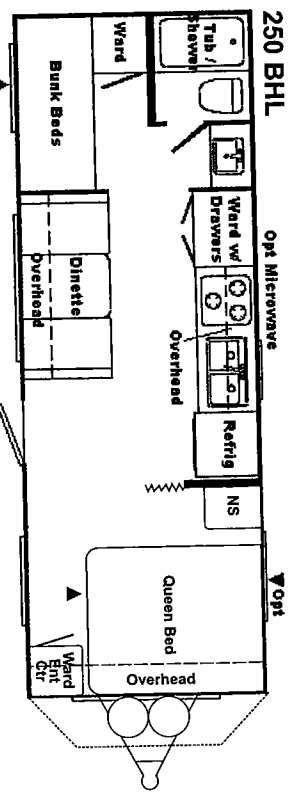
245 FBL



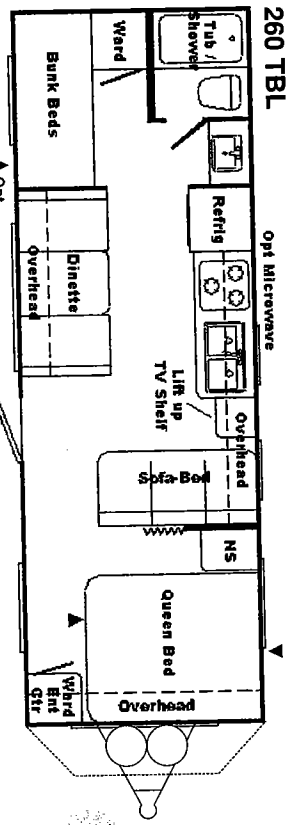
*There's a Springdale
Floorplan for
Every Life Style...
At a Price
You Can Afford!*

= Optional ABS Cap
with Enclosed LP
& Storage

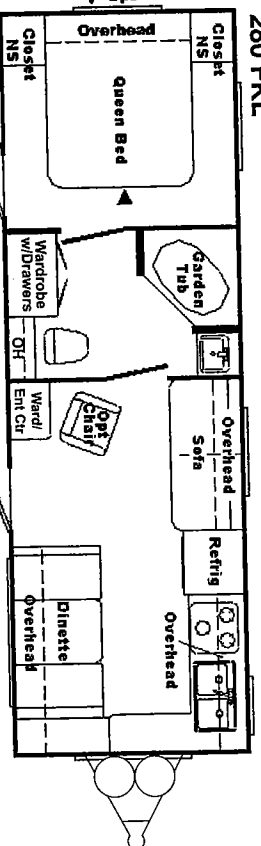
250 BHL



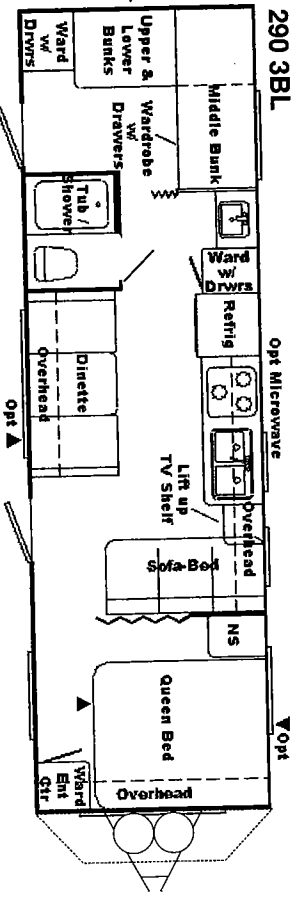
260 TBL



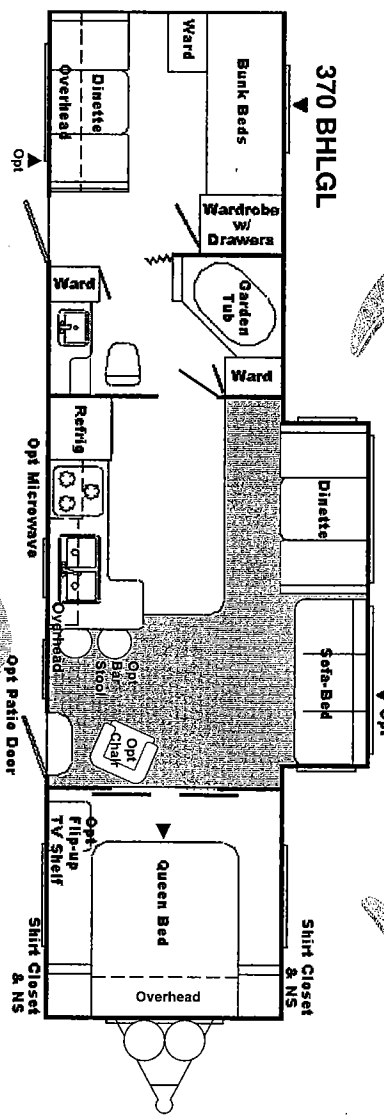
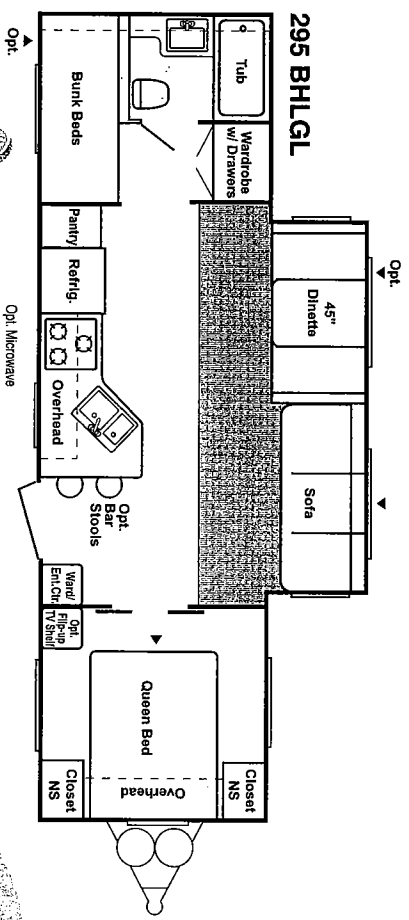
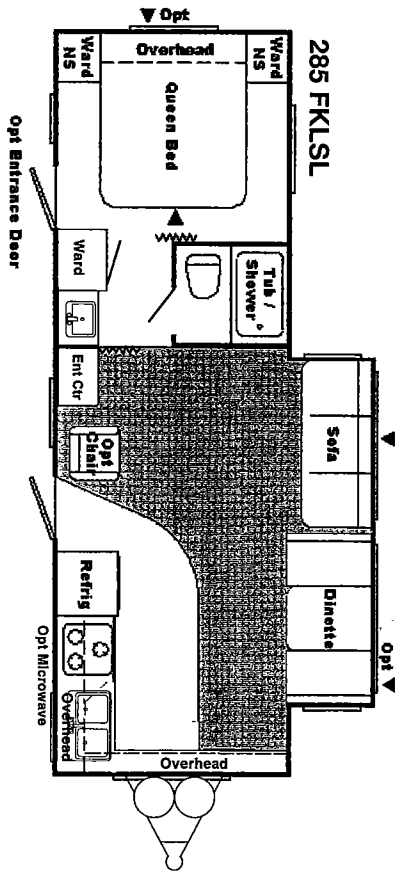
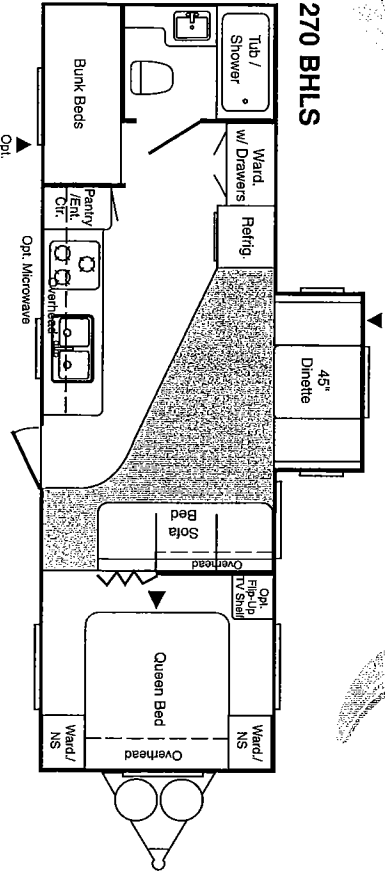
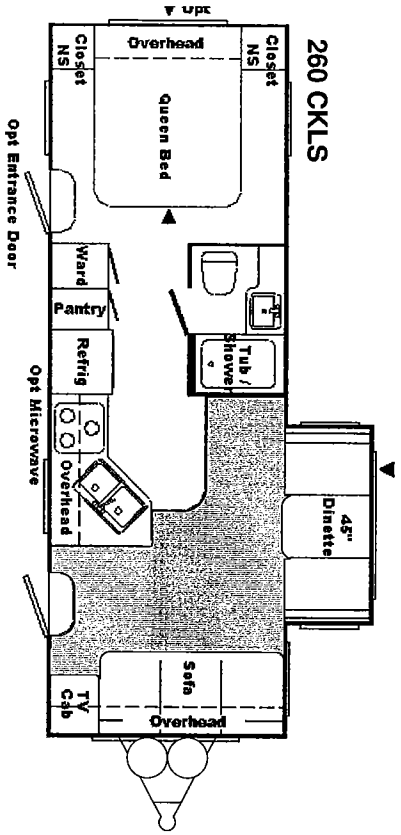
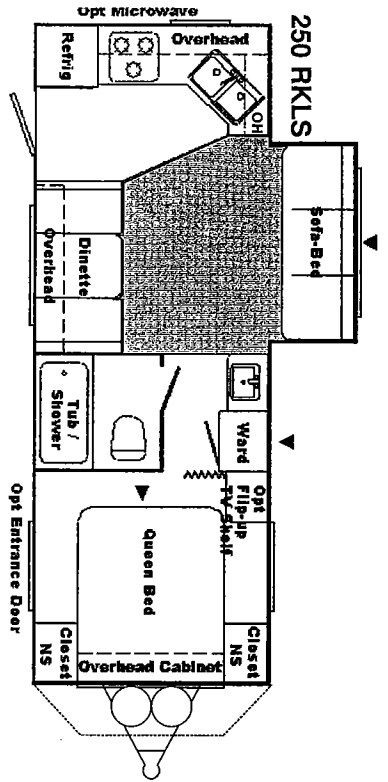
280 FKL



290 3BL



With Slide-Outs



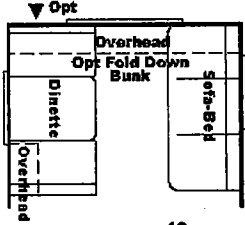
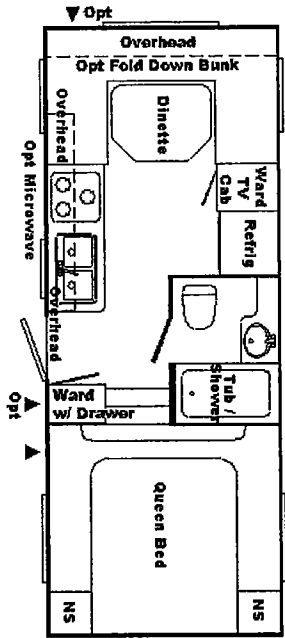
▼ = Storage

▼ Opt. = Optional Storage

You'll Find Plenty of Storage Space In Every Springdale. And you can even add more as an option!

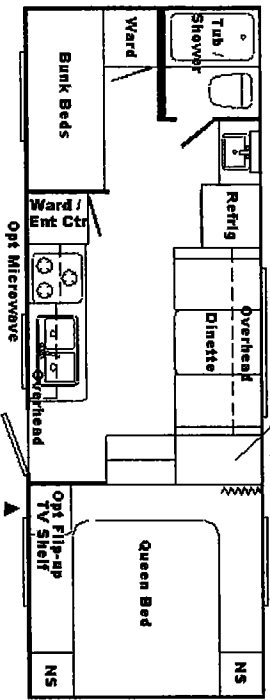
Fifth Wheel Floorplans

225 FWRDL

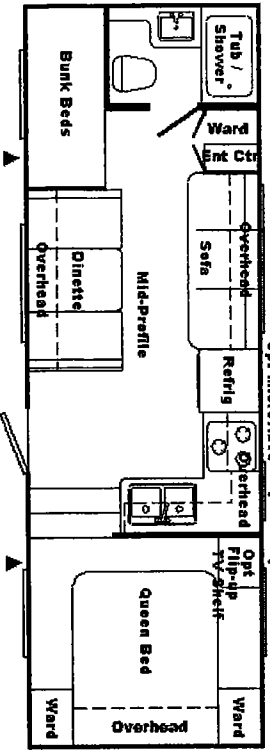


Sofa/Dinette Option in place of "U" Dinette

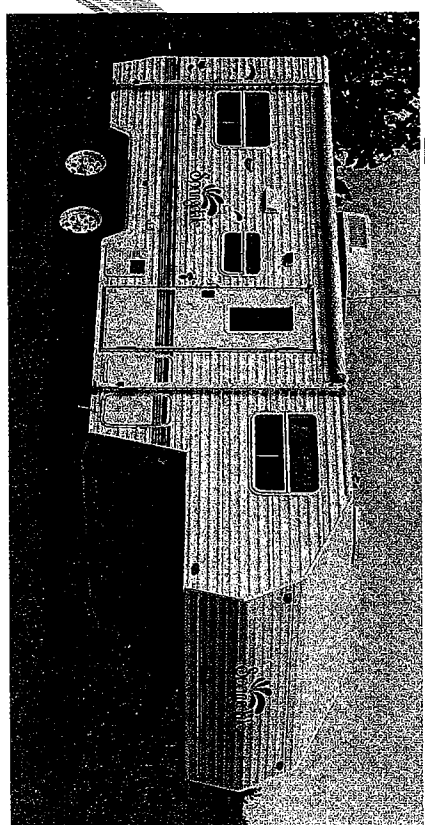
230 FWBHL



260 FWBHL

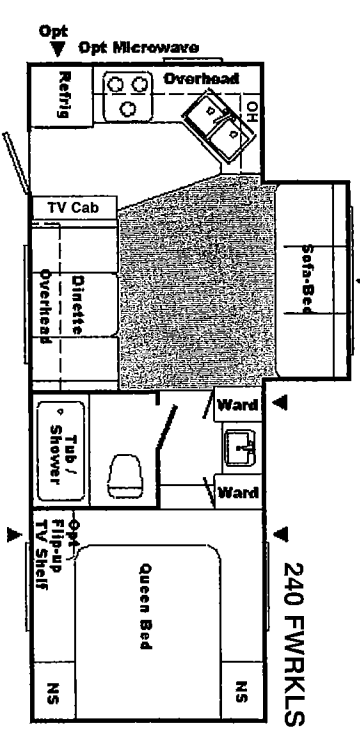


Springdale IS Easy to Tow. Most Models Can be Pulled by A 1/2-Ton Truck



With Slide-Outs

240 FWRKLS



245 FWRLLS

