

Mountaineer Montana™

2001

The Choice of Experienced RVers



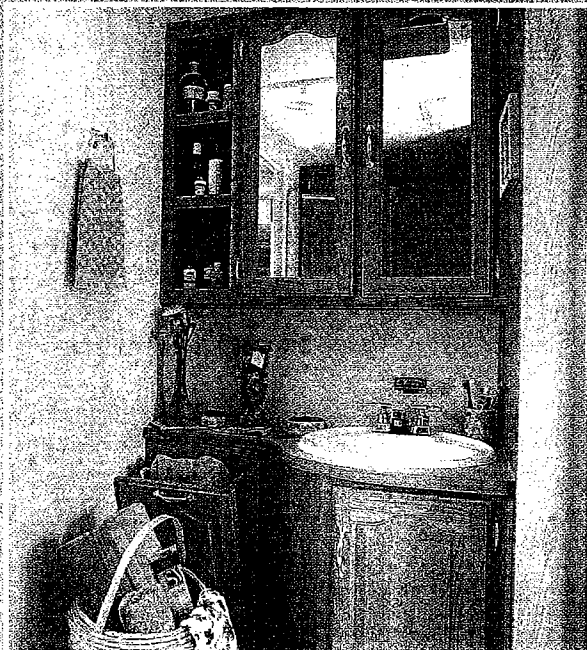
"Built by people who know RVing"



Above, the Mountaineer 305FKS, in Autumn Ridge. We've given Mountaineer 2" of additional head room to create a more open feeling. This allows for a much taller slide room complete with "plate depth" overhead cabinets. Notice the tall residential cabinets and abundant counter space.

Comfort . . .

Montana Mountaineer is built by people who know RVing. We have created the Mountaineer with the all of the desirable features, down to the smallest detail, that we know we would like in our own travel trailer. You will recognize the care we have taken to make the Mountaineer the travel trailer of your dreams — meticulous attention to detail inside and out, stunning exterior decor, and the easy-to-maintain, stylish interior design. Mountaineer is available in five floor plans and three beautiful color schemes — Autumn Ridge, Spring Floral and Harbor Blue.



Features you'll always find in a Mountaineer bathroom — large sinks, spacious medicine cabinets, ample storage.

Towability . . .



Montana Mountaineer's Total Surround® welded aluminum framing includes the walls, roof and floor. The benefits of aluminum framing versus wood framing are many. First, we especially like the tremendous weight savings the aluminum provides. Montana products are well known for their great towing characteristics, and one reason is that we are about 600 – 1,000 lbs. lighter than most wood-framed trailers.

Exterior Features

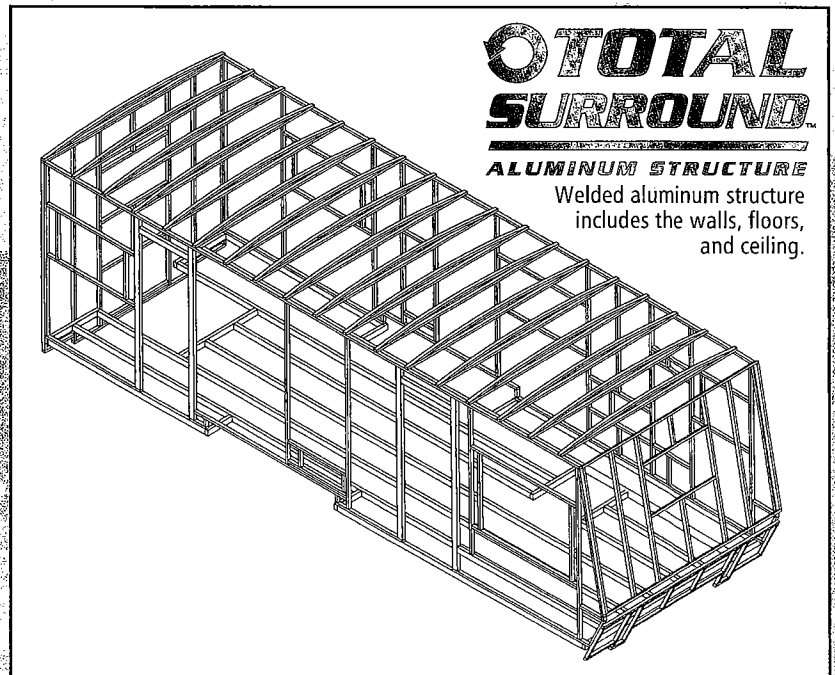
- Totally welded aluminum-framed walls, roof and floor
- Aluminum exterior with screw fasteners
- Laminated 2" thick sidewalls
- Block foam insulation
- Foam-core insulation
- Radius baggage doors with inside fasteners
- Extra wide 30" entrance door
- Smooth-operating, easy-to-use entrance steps
- Radius wrap lower walls
- "Easy-to-Lube" axles (pkg.)
- Deluxe patio awning (pkg.)
- Enclosed and heated, below-floor fresh water tank
- One-piece, fully decked rubber roof
- Tinted windows
- Aluminum bumper cover
- Outstanding exterior storage

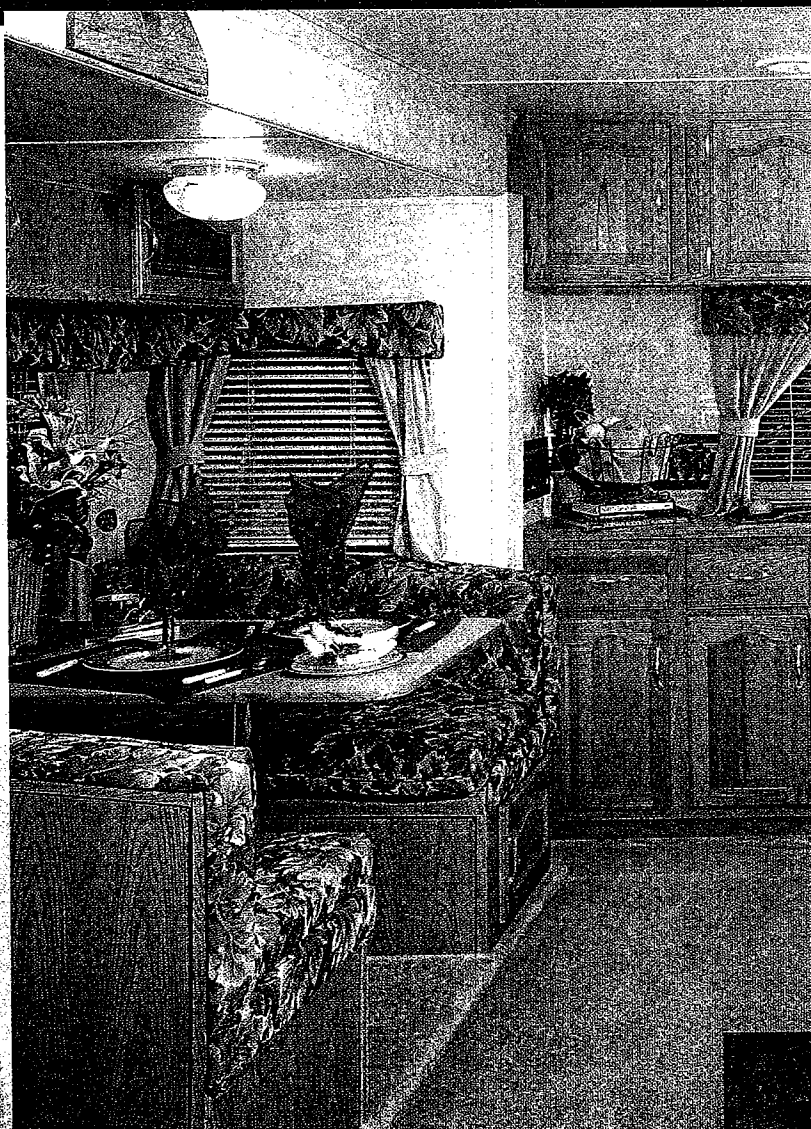
Structural Integrity . . .

Another significant benefit to aluminum is the long life and structural integrity it provides. Aluminum is not damaged by water and its strength is legendary in aircraft usage. Although aluminum is more costly than wood, it is simply the ideal raw material for building a trailer that will offer years of trouble-free use.

Adding to the benefits of aluminum is a construction process that is second to none. We laminate our sidewalls with block foam insulation, then screw (rather than staple) our aluminum outer skin to metal backers in the sidewalls.

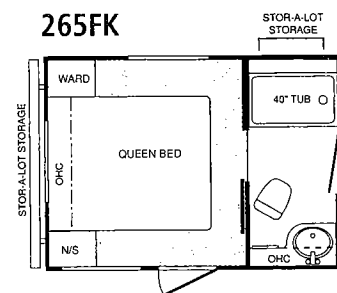
This combines the benefits of a lightweight exterior skin with the durability and insulating value of a 2" thick laminated wall.



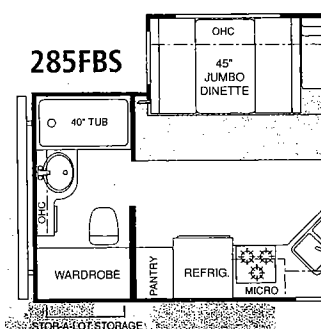


All Mountaineers feature a 45" wide jumbo dinette

265FK



285FBS



Interior Features

Living Area

- 6'8" interior head room
- 28-oz. carpeting and upholstery with fabric protector
- Solid oak cabinet doors with cathedral tops
- Entertainment center
- Heavy duty steel drawer glides with ball bearing rollers
- Tall slide room with overhead cabinets
- Swivel rocker (305, 315)
- Decorative jack knife sofa
- Mini blinds
- 12V rechargeable flashlight near exit (pkg.)

Kitchen

- Oak edge counter top
- Cabinet toe kicks (pkg.)
- Lighted range hood with fan
- Wide deep drawers - real wood
- Residential-size overhead cabinets
- Sink cover cutting board (1)

- Garbage can
- Oak knife holder in counter top
- Silverware tray
- Swing-Out Dinette (265)
- White acrylic kitchen sink with high-arch faucet (pkg.)
- Fluorescent light above sink

Bathroom

- Thetford foot pedal toilet (pkg.)
- Larger residential-size bath sink
- Extra-large bathtub
- Medicine cabinet - large mirrored
- Decorative shower curtain
- Corner shower w/glass enclosure (305, 315)

Bedroom

- Deluxe innerspring mattress (pkg.)
- Quilted bedspread and 2 pillow shams
- Overhead TV shelf and outlet
- Huge amount of storage under bed



Hi Nicole & Jim,

The Mountaineer life is carefree in our beautiful travel trailer. We're not home but not as soon as we planned.

Jack & J

P.S.

It's so easy to tow!

Appliances

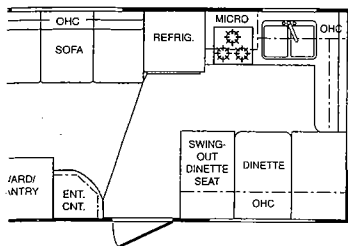
- Double-door refrigerator
- RV microwave oven (pkg.)
- AM/FM stereo cassette with four speakers (pkg.)
- 13,500 BTU ducted roof air conditioner with wall mount thermostat and "Quick Cool" (pkg.)
- High-output range with automatic ignitor and 22" oven (pkg.)
- TV antenna and booster (pkg.)

Utilities

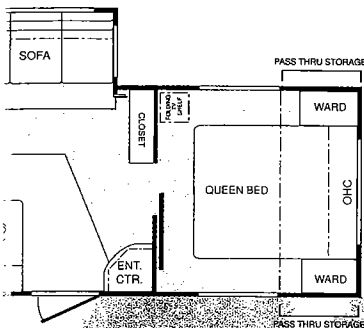
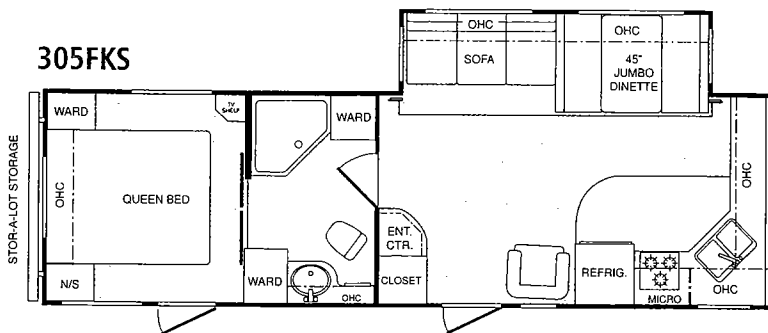
- Water pump
- 6-circuit breaker
- System
- 45-gallon
- 30-gallon
- Automatic
- In-
- Ph
- Ca

Great storage and a ha sliding tr

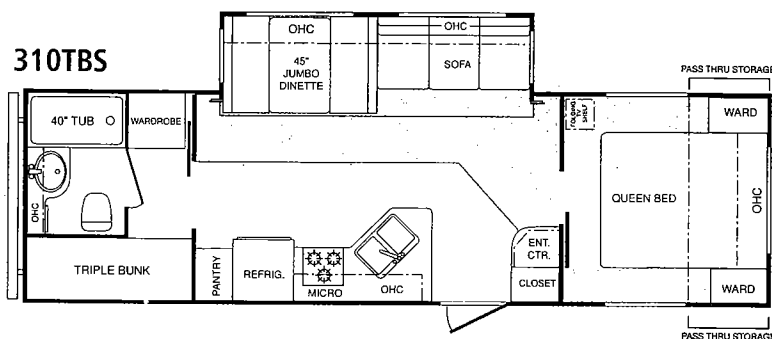
FLOORPLANS



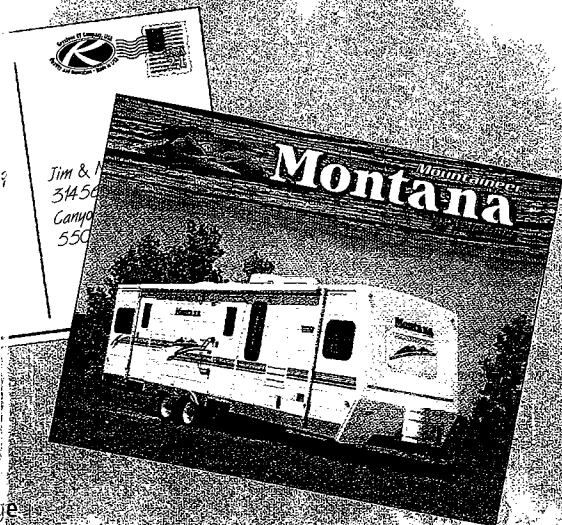
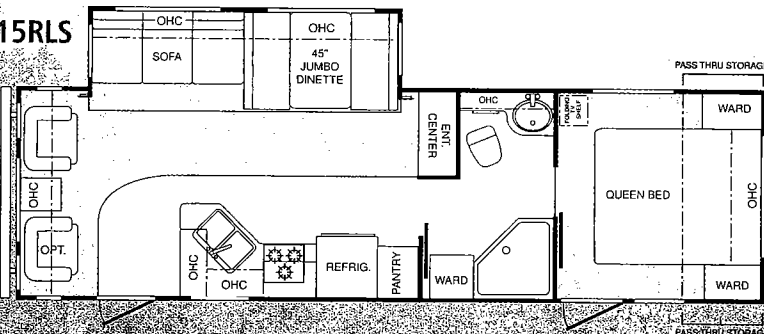
305FKS



310TBS



315RLS



Specifications

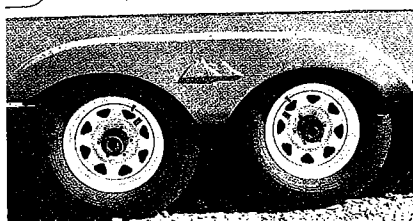
MODEL NAME	265FK	285FBS	305FKS	310TBS	315RLS
GVWR	7760	9700	9780	9540	9760
GROSS DRY WT. (UVW)	4811	5960	6160	6545	6600
CARRYING CAPACITY	2949	3740	3620	2995	3160
HITCH	760	980	980	740	960
DRY AXLE WEIGHT	4280	5560	5480	6320	6200
EXTERIOR LENGTH	28' 3"	29' 3"	31' 3"	31' 9"	32' 9"
EXTERIOR WIDTH	8'	8'	8'	8'	8'
EXTERIOR HEIGHT — TOP of A/C	10' 6"	10' 11"	10' 11"	10' 11"	10' 11"
FRESH WATER CAPACITY	45	45	45	45	45
WASTE WATER CAPACITY	38	38	38	38	38
GREY WATER CAPACITY	38	38	76	38	76
LPG CAPACITY (LB)	60	60	60	60	60
TIRE SIZE	205/75R15	225/75R15	225/75R15	225/75R15	225/75R15

Due to continuous product improvement, modifications may be made without prior notification or obligation.
UNLOADED-VEHICLE-WEIGHT is calculated as base unit with standard equipment only.

heater by-pass kit (pkg.)
on gas/electric DSI water heater
ns.monitor panel
ip convertor
ip power cord
ratic ignition furnace with
r ducting
jack
TV hook-up



Safety grab handle and easy-to-use triple entry step.



Easy-To-Lube AL-KO™ Axles make it simple to maintain your Montana suspension.

OPTIONS

Exterior

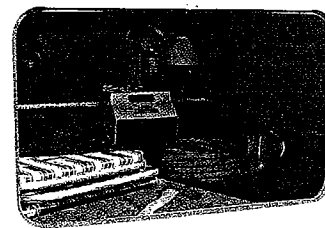
- Crank-down stabilizer jacks (4)
- Power tongue jack
- Fold-away entry/exit handle
- Security light, door side
- Security light, road side
- Safety glass windows
- Slide awning — main
- Double entry step at rear door
- 15" spare tire and carrier
- Front fiberglass cap with aluminum exterior
- Fiberglass walls and front cap
- Heated holding tanks

Decor

- Day/night shades
- Second swivel rocker
- Free-standing dinette with 4 chairs
- Garden tub w/glass enclosure (305FKS and 315 RLS mandatory option)
- Skydome over tub or shower
- Sleeper sofa (slideroom models)
- Planked kitchen floor
- Raised oak refrigerator front
- Range cover
- Second sink cover

Equipment

- 15,000 BTU A/C with "Quick Cool"
- Bedroom 13,500 BTU A/C
- Wire and frame for bedroom A/C
- Bookshelf, AM/FM, CD, Stereo Cassette
- Fantastic vent fan (kitchen or bedroom)
- Large double-door refrigerator
- Large double-door refrigerator with icemaker
- 10-gal. gas/electric water heater (N/A 265FK)



Huge, fully-lined, "Stor-A-Lot" storage compartment with exterior and under bed interior access.

"Moving to Montana" Package

- 13,500 BTU ducted A/C
- Microwave
- Stereo
- Awning
- TV antenna
- Customer Convenience Group*

* Customer Convenience Group:
Tinted windows, easy-lube hubs, rechargeable flashlight, water heater by-pass, foot pedal toilet, high arch faucet, auto ignition range, LP bottle cover, cabinet toe kicks, mattress upgrade.



Keystone Story

Montana's spectacular success in the marketplace is reaching historical proportions. Since its introduction less than three years ago, Montana has become one of the top-selling travel trailers and fifth wheels in the nation as well as in Canada.

Our formula for this success has been straight-forward. From the beginning, we have believed that our customers should have a large voice in our design, styling, and features. We listen very closely to owner feedback and respond quickly. Further, we run our company with minimal "corporate" overhead, allowing us to offer more features in the Montana than any comparable travel trailer and fifth wheel in the nation.

The results are seen every day among the thousands of happy Montana owners who travel along the highways of North America. On behalf of everyone here at Montana, I hope you will enjoy our product as much as we have enjoyed creating it for you.

Your Montana Mountaineer Dealer:

Sincerely,

R. J. Smith
General Manager

Montana • A Division of Keystone RV Company



**Keystone RV
Company**

17400 Hackberry Drive Goshen, IN 46526
(219) 642-4590 www.keystone-montana.com

Product information and photography are as accurate as possible at the time of publication. Colors and finishes are photographic representations and may appear differently when viewing actual materials. Some features shown are optional. Features, prices and specifications are subject to change without notice. 11/00