

Outback

by LITE WAY

2003

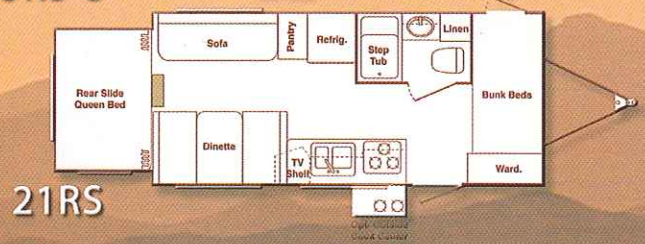
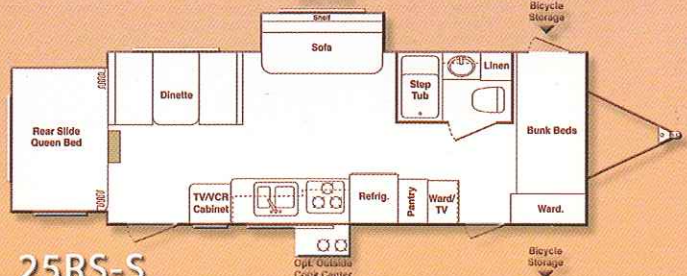
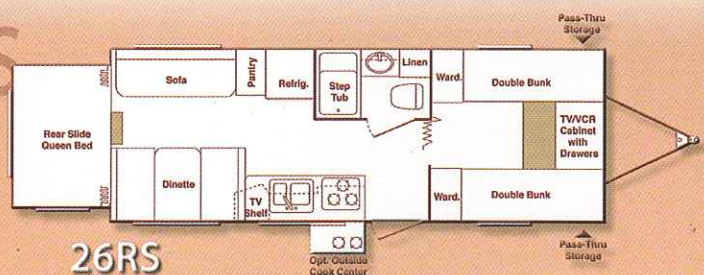
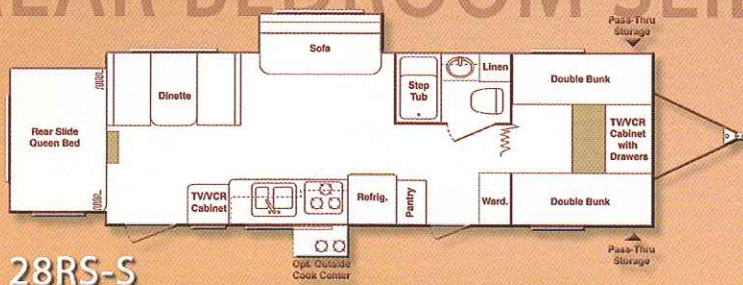


Together With Family...
...Priceless Memories



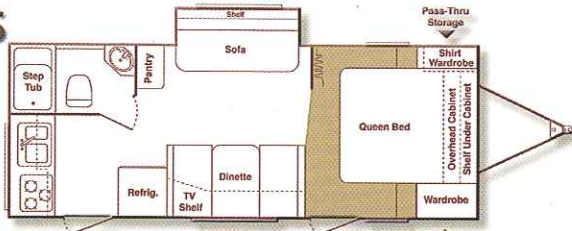
Outback's interiors feature the ultimate expandable living space without the weight and the length to tow.
(25RS-S shown above)

REAR BEDROOM SLIDES

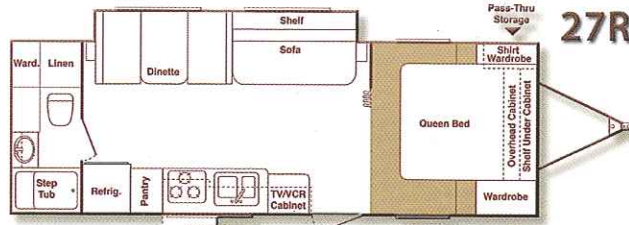


Outback's exclusive outdoor cook center is permanently attached and opens with ease. A built-in cutting board/counter and flip-out towel bar alongside the stovetop will expand your cooking area.

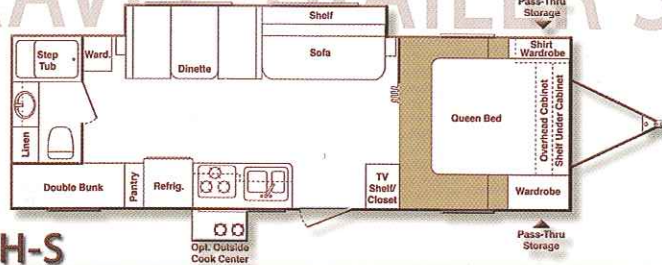
25FB-S



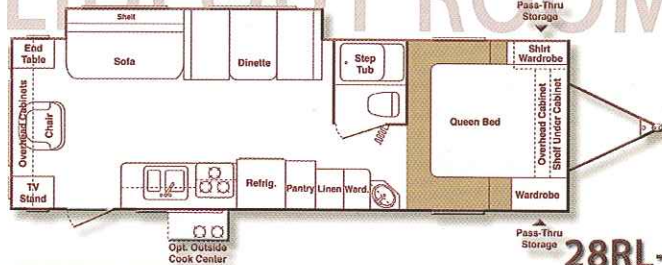
27RB-S



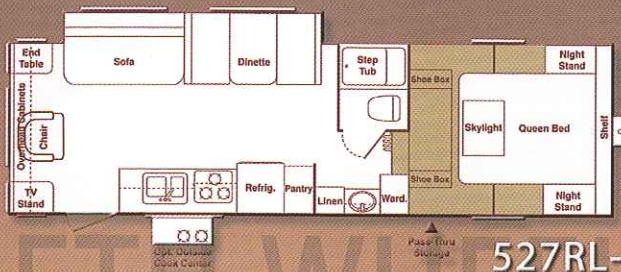
28BH-S



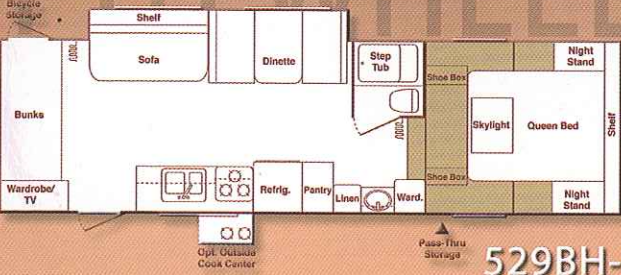
28RL-S



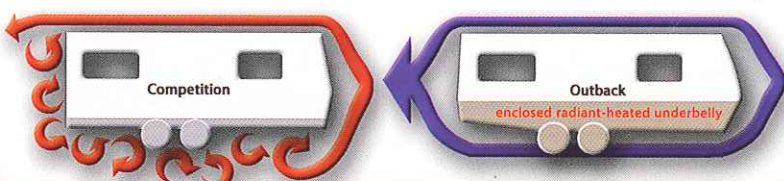
527RL-S



529BH-S



This gorgeous kitchen will feel like home with its rich residential look; notice the raised panel cabinetry and the impressive storage capacity. (25RS-S shown above)



Not your typical RV microwave... it's a residential style microwave, up to 8 inches lower than the standard, so it's easier for you to reach and see what's cooking.

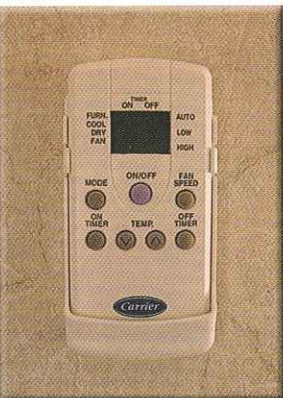
Outback's exterior design with the enclosed underbelly creates less air turbulence for easier towing. Outback's exclusive below-floor radiant heat ducts will extend your camping season and increase your interior storage space.



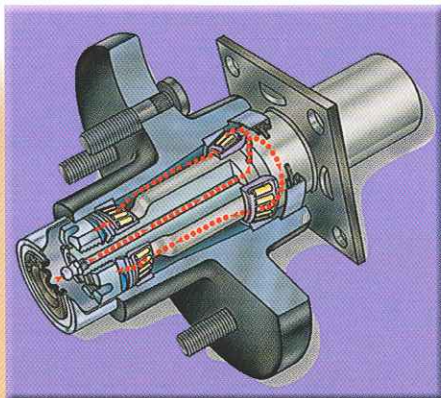
Outback's exterior pass-through storage features a large pull-out drawer for an effortless reach to all your camping items. There's plenty of room for long and narrow cargo as well.

	21RS	25FB-S	25RS-S	26RS	27RB-S	28BH-S	28RL-S	28RS-S	527RL-S	529BH-S
Total Dry Weight	3990	4130	4655	4480	4880	4930	4900	5190	5780	N/A
Carrying Capacity	1510	1870	1345	1520	2120	2070	2100	1810	2120	N/A
Weight	360	440	440	600	520	560	760	460	1200	N/A
Exterior Length	22'1"	25'2"	25'10"	26'5"	28'	29'4"	29'10"	29'4"	28'2"	29'4"
Exterior Width	8'	8'	8'	8'	8'	8'	8'	8'	8'	8'
Int. Height-Top of A/C	9'11"	9'11"	9'11"	9'11"	10'1"	10'1"	10'1"	10'1"	10'11"	10'11"
Fresh Water Tank (Gal.)	38	38	38	38	38	38	38	38	38	38
Grey Water Tank (Gal.)	30	30	30	30	30	30	30	30	30	30
Waste Water Tank (Gal.)	30	30	30	30	30	30	30	30	30	30
Capacity (lb.)	60	60	60	60	60	60	60	60	60	60
Size	205-14	205-14	205-14	205-14	205-14	205-14	205-14	205-14	205-14	205-14





Carrier brand, remote operated A/C and climate control system



AL-KO Ultralube Axles, service without disassembling



All-aluminum light weight constructed for durability and longevity



Utilizing aluminum interior framework for strength and precision bunk dinette and-bed bases

Appliances & Equipment

- 2-door refrigerator
- 3-burner range
- 6-gallon water heater
- 30,000 BTU furnace
- Water heater bypass kit
- 1-piece molded acrylic countertops and sinks
- Flush fit sink covers
- Hi-rise faucet in galley
- Monitor panel
- Compression waterline fittings

Electrical

- Patio light with amber lens
- Ceiling lights with wall switches
- Outside 120-volt receptacle
- 30-amp. power cord
- 45-amp. converter
- Double-battery brackets
- Hitch light
- Trunk light

Exterior

- Fiberglass exterior
- PDM rubber roof
- Jalousie windows at dinette and sofa
- 30-lb. LP bottles
- Drip rails with drip caps
- Radius entrance doors
- Grab handles at entrance doors

Running Gear

- 14" bias ply trailer tires
- White wheels with chrome cap and chrome rings
- 10" electric brakes
- Leaf spring "equalizing" suspension system
- 8" I-beam frame, totally powder-coated

Interior

- Grab handles inside at entrance doors
- Water, soil and stain-resistant fabrics
- Custom-designed box valances
- Miniblinds on all windows
- Armstrong® flooring
- Carpet in bedrooms
- Large overhead cabinets
- "Thermofoil" raised panel cabinet doors
- Residential style concealed cabinet door hinges
- Wood side drawers with residential-style drawer guides
- Upholstered headboard
- Portable Acrylic dinette table with folding legs for exterior use

Bath

- Power roof vent
- 1-piece molded acrylic lavatory sink with sink cover
- Skylight over tub (travel trailer only)
- Grab handle at bathtub

Other Popular Options

- 6 gal. gas/electric DSI water heater...2 lbs.
- Oven.....30 lbs.
- 4-stabilizer jacks.....24 lbs.
- Outside shower.....3 lbs.
- 2 security lights.....2 lbs.
- Tub surround12 lbs.
- Outside cook center.....30 lbs.
- 14" spare tire kit.....40 lbs.
- Stove cover.....2 lbs.
- Exterior storage drawer36 lbs.
- Fifth wheel power front jacks.....7 lbs.



Sweeping Edge, Aerodynamically Designed for Light 1/2 Ton Trucks

Comfort Package: 13,500 ducted A/C, AM/FM/CD stereo, awning, TV antenna/cable, microwave: Approx. Weight, 200 lbs.

Designer Package: oval mirror, wall border, cloth shower curtain, sofa pillows, bathroom accessories, brass coat hooks, utensil rack, innerspring mattress, bedspread, LP/battery cover, chrome bumper cover, raised panel refrigerator, catch-all tray, recessed cutting board, paper towel holder, laundry hamper: Approx. Weight, 30 lbs.

Your Favorite Outback Dealer: