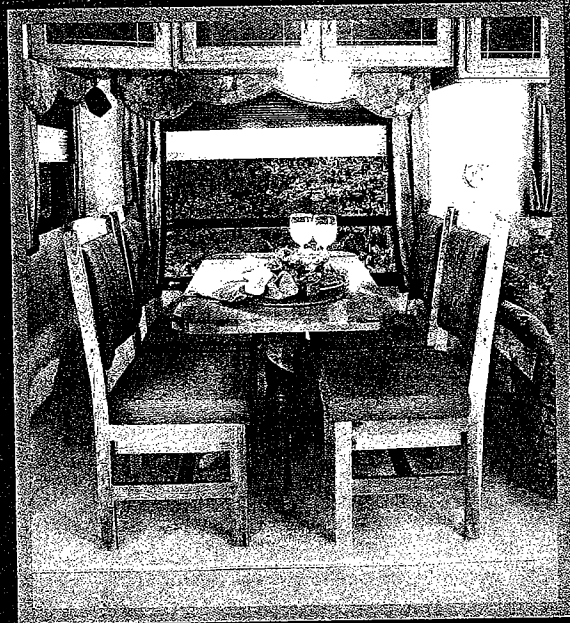
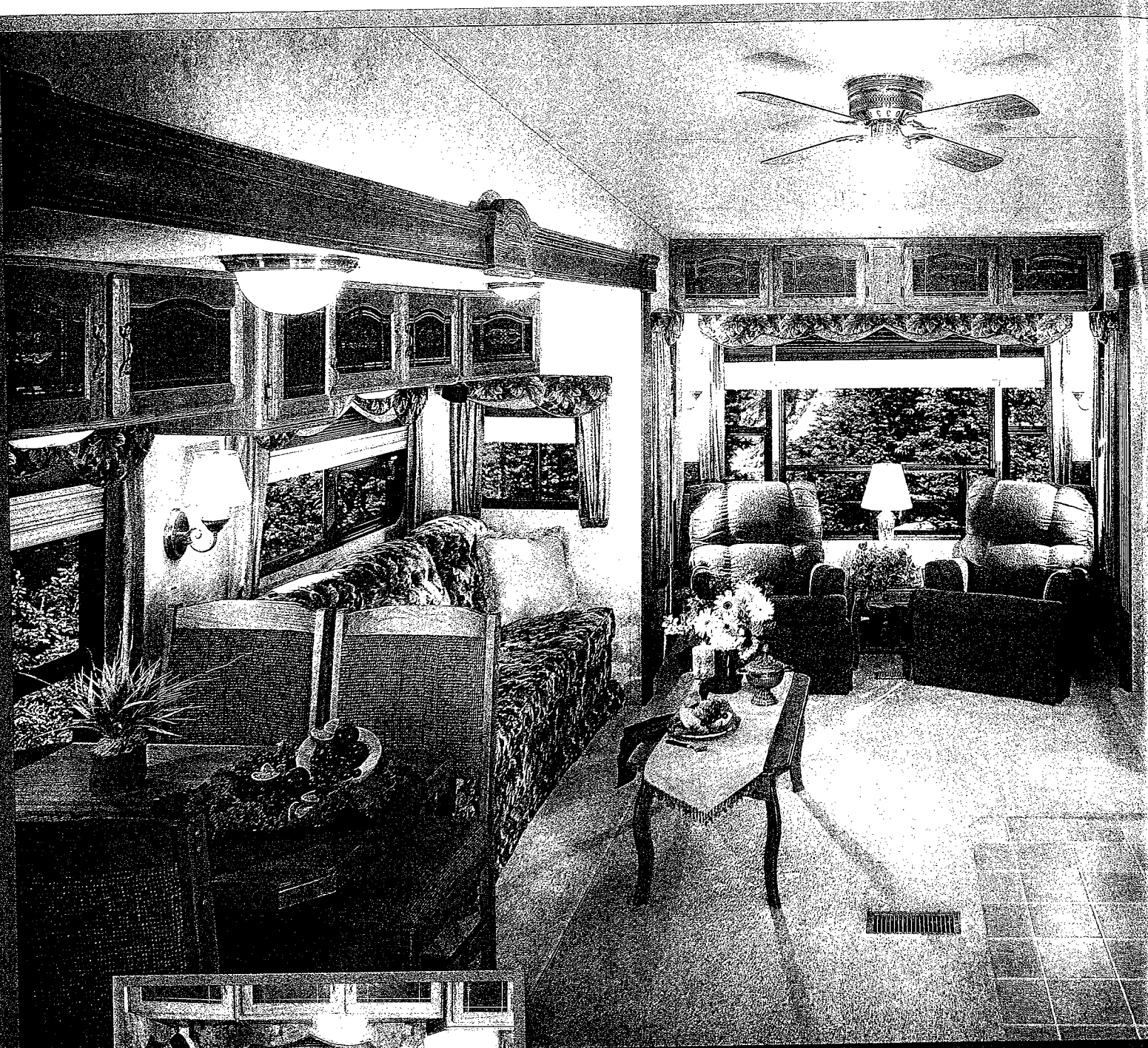


Montana




"Built by People who know RVing"





Montana's 3670 RL floor plan is the most open of all our interiors. Shown above in the elegant Spruce décor, the 3670 RL glows with a traditional, yet spacious atmosphere. Extra tall recliners provide you with the perfect place to chat, watch television or take a little snooze. The "Spacemaker" free-standing dinette, shown at left, features a tabletop which slides forward and back on either side so it is easier to enter and leave the dining area. The elegant, single-pedestal design allows ample leg room under the table. You'll find plenty of additional storage under the hinged seat cushions. Upon close observation, you will recognize the quality of this American-made dinette ensemble to be truly premium.



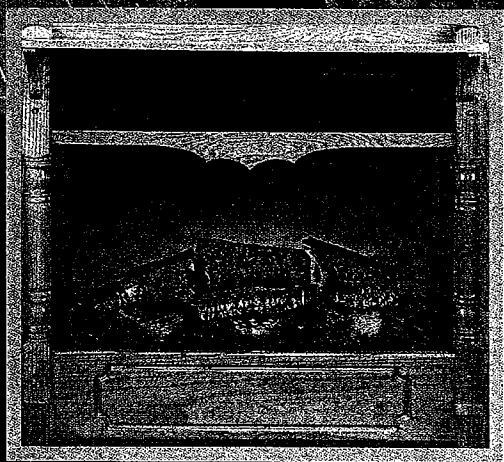
Move Up To Montana.

At Montana, we believe that, with the right inspiration, you can achieve greatness at most anything —even if it's vacationing, adventuring or just relaxing. We're inspired to build fifth wheels that will enable you to easily achieve all three.

To do this, we know we must build a fifth wheel that provides continuing pleasure over the long haul and in every aspect of the ownership experience. This has been our goal ever since we introduced the Montana.

Montana is the envy of the industry and the Number One choice in North America because we bring together concepts other manufacturers find mutually exclusive—convenience, comfort, quality, innovation and value—and offer it all to you in breathtaking floor plans and interior décors.

It's easy to see why the Montana is the standard against which all other fifth wheels are measured.



Imagine the pleasure of this 5,100 BTU electric fireplace whenever you want to enjoy a touch of cozy warmth.

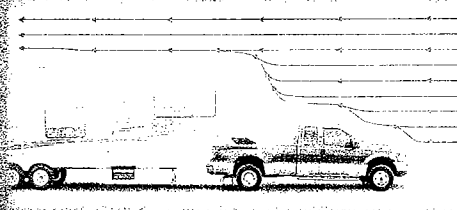


Quality.

A Montana's appearance speaks of class-leading style and comfort. But we are not satisfied with mere good looks. So, we build the Montana as tough and durable as it is beautiful. Realizing that the final quality of the Montana is a direct result of the quality of everything that goes into it, Montana's engineers analyze every component to ensure years of trouble-free usage.

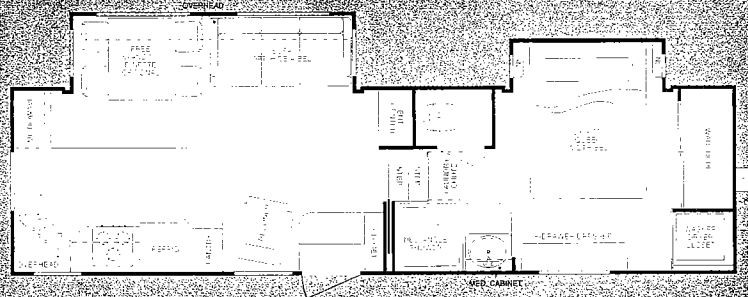
Not everyone offers quality features like Total Surround Aluminum Plus™ framing, all-steel drawer guides complete with roller ball bearings or real wood trim moldings. Other manufacturers find it easier to talk about quality than to create it. Montana's Old World craftsmen are the finest in the industry and continually strive to provide a level of "fit-and-finish" second to none. Your peace of mind is assured because you are purchasing an RV worthy of its established reputation for quality.

Towability.

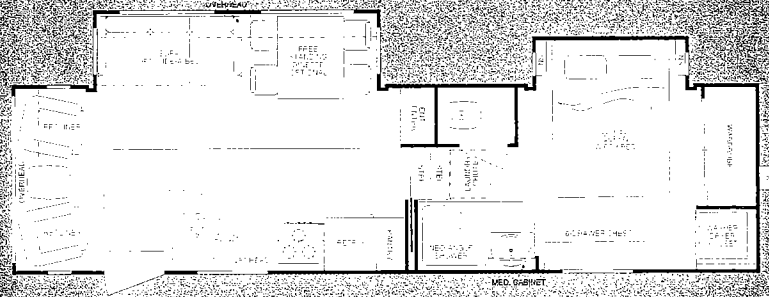


With its unique design, the Montana fifth wheel is engineered with great weight distribution and a low center of gravity to spread the load. Further, the Montana fifth wheel is designed with great aerodynamics. The "aerodynamic" design of the Montana fifth wheel is designed to spread the load around the fifth wheel instead of under it. Better aerodynamics result in less sway, stress-free towing and increased fuel economy.

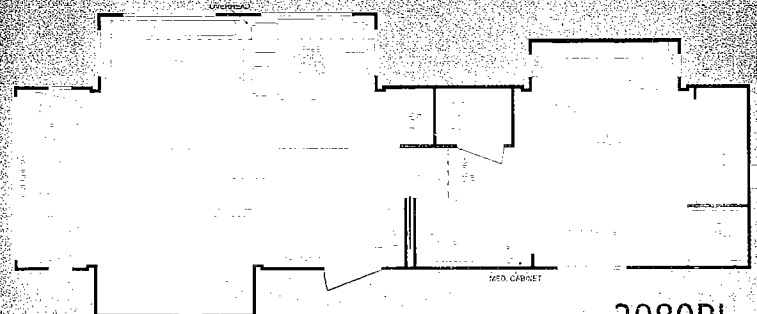
Floorplans.



2950RK



2955RL



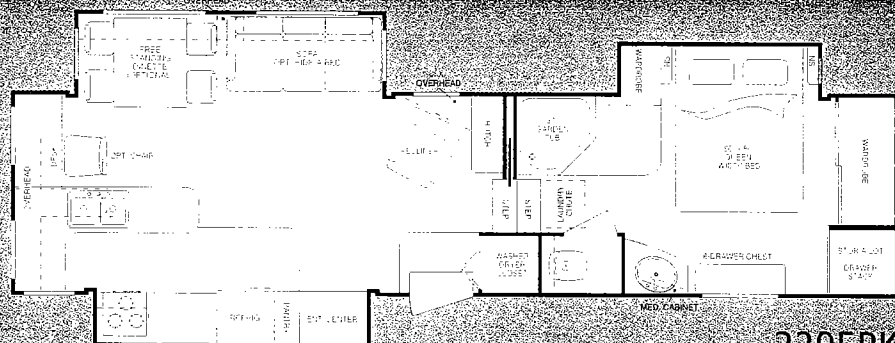
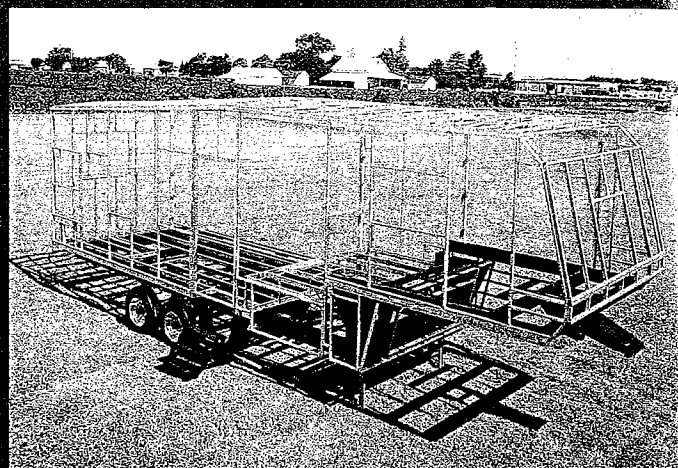
2980RL

The innovative 3650 RK floor plan creates a unique kitchen and living environment unlike any other fifth wheel. Enter the fabulous gourmet kitchen with double slide rooms and an island bar. Notice the generous amount of kitchen counter space and residential-style cabinetry, designed for maximum storage. The spacious living room features an L-shaped hide-a-bed and a matched pair of residential swivel rockers. Oversize windows allow you to enjoy the scenery while you relax. This model shown in the Desert Sunset décor.

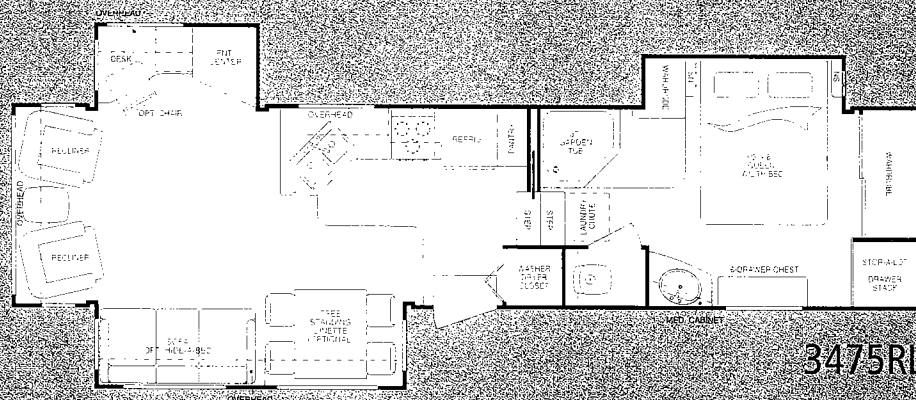
Visit the Montana Owners' Club website,
independently created and maintained by
Montana fifth wheel owners, at
www.montanaowners.com

TOTAL SURROUND™ ALUMINUM PLUS

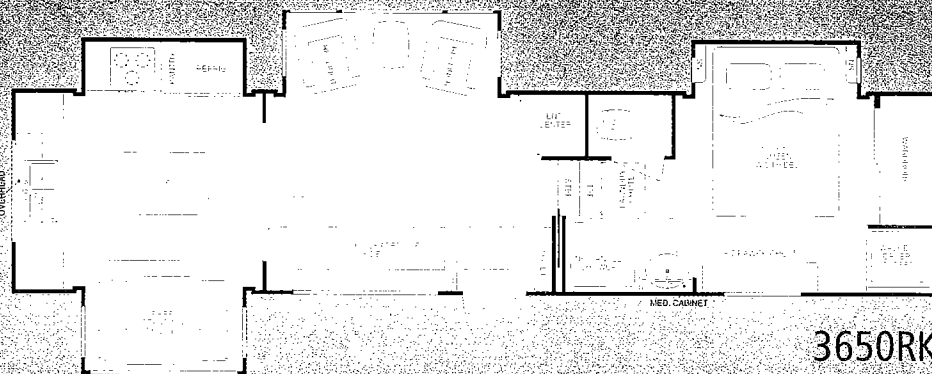
Many Fifth Wheel brands claim to be aluminum framed, but to cut costs most manufacturers use wood framed floors and roofs. At Montana, that's not the case. We build 100% aluminum framing in all the walls and floors, PLUS we utilize state-of-the-art lightweight, machine-fabricated steel rafters in the roof. In addition, for added strength and smoother exterior finish, our one-piece sidewalls are 2" thick and laminated! Check out the difference. You'll be impressed.



3295RK



3475RL



3650RK

Light Bu



We don't recommend driving a truck over the wall of your RV, but isn't it nice to know you could?

