

TRAVEL TRAILERS & FIFTH WHEELS

Cougar

WHERE LUXURY & LIGHTWEIGHT MEET
BY KEYSTONE WESTERN EDITION

DSI
15th Annual RVDA DEALER
SATISFACTION INDEX

#1

In Class
for 8
Straight
Years



BY KEYSTONE

Cougar



REMOVABLE DINETTE TABLES



320 SRX

COUGAR DEN

Cougar is driven by the people whose opinions we value most, our customers. We start by listening to the customer's expectations and what they identify as the keys to quality workmanship. We then incorporate the customer's expectations and desired features into the design of the RV.

The natural result of this process is innovation, fresh ideas, new technologies, unique features and better ways of creating performance, style and convenience.

Team Cougar

Sit down and relax in this Cougar Den and you may not want to leave. The Cougar Den features first of its kind All-Window slideout room with two removable dinette tables that seat up to six. Other Den features include recliner positioned near the 32" LCD HDTV (mounted on swing arm), air mattress sofa with storage below, and residential furniture with rounded edges and pillow-back feel, combined with soft indirect/direct recessed lighting.

Shown in Autumn Night décor and available on the 320SRX.

The 276 RLS in Bayleaf boasts incredible looks and elegant style. Hardwood cabinets, day/night shades, speckled carpet and large windows make this unit one of our most popular.

SPACIOUS INTERIOR



276 RLS

#1

Laminated
Travel Trailer
& Fifth Wheel
in the
World!

32" LCD TV



LUXURY SIDE AISLE BATHS... FOR ULTIMATE PRIVACY

Seven new models with enclosed side aisle baths continue to separate Cougar from our industry competitors. These private bathrooms and bedrooms were created with maximum privacy in mind. Take a look at these models and see which one fits your individual needs.

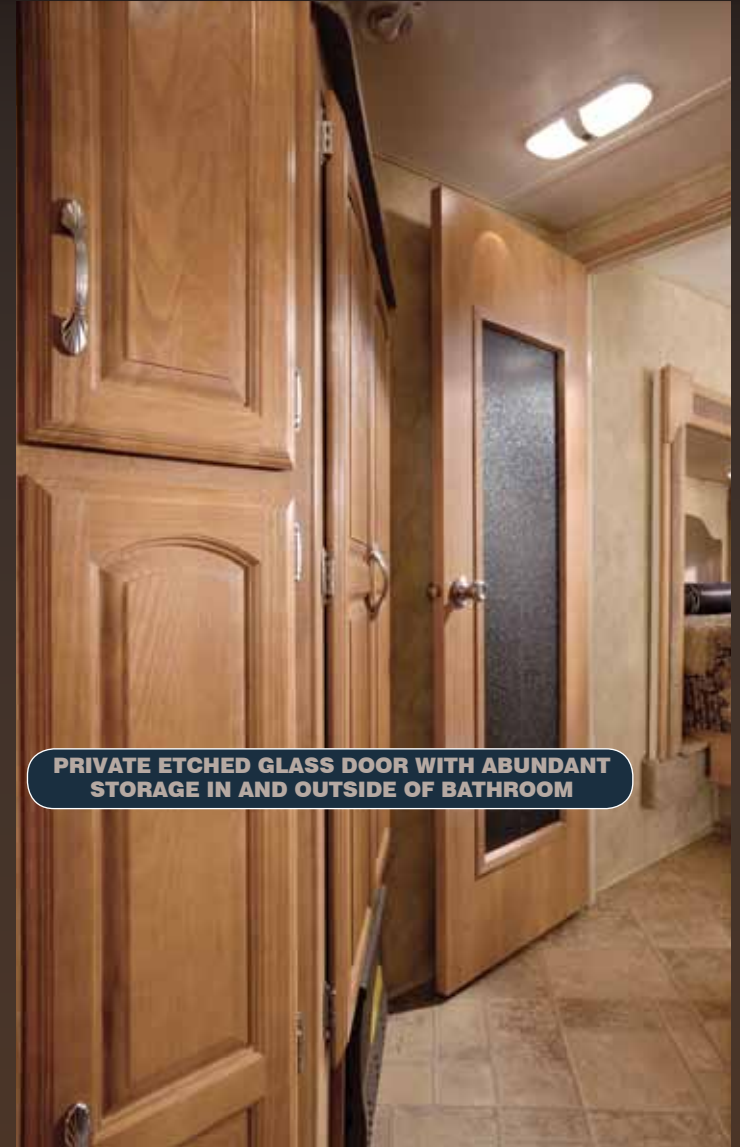
293 SAB



FULLY-ENCLOSED BATHROOM



PRIVATE ETCHED GLASS DOOR WITH ABUNDANT STORAGE IN AND OUTSIDE OF BATHROOM



BUNK HOUSES... MORE FOR YOUR MONEY

Passion plays a huge part in the success of anything you do. For 10 straight years we have taken that passion and created some of the best floorplans in the industry. This year is no different. See for yourself why Cougar bunkhouses can't be beat.



NEW OVERSIZED BUNKS WITH "TRUNDLE BED"

293 SAB

The new 322 QBS is the first fifth wheel to feature an off-door spacious side aisle bath *and* a wardrobe slide in the bunk room. This creates a private front room for the kids while also giving a private enclosed bathroom.



NEW QUAD BUNK TRIPLE SLIDE. MORE STORAGE THAN ANYONE IN ITS CLASS

322 QBS

TAKE IT WITH YOU

Imagine putting your "toy" in an RV that feels like home. Cougar's SRX model features unprecedented residential feel while offering a bunk room for your kids as well as a place to haul your toys.



LOCK-UP YOUR TOYS



60" WIDE RAMP DOOR



ADJUSTABLE RAMP LEGS



KITCHEN STORAGE IS KING



COUNTERTOP EXTENSION



DUAL POTS AND PANS DRAWER

276 RLS



COUGAR KITCHENS DAZZLE. OUR FOCUS IS FROM YOUR FEEDBACK.

Our Executive Kitchen Includes:

1. Huge Pantries - Best in Class
2. Utensil Drawer - All Models
3. Two Pots and Pans Drawers - Most Models
4. Large Counter Extension - Most Models
5. Sink Covers - Create More Counter Space
6. Lazy Susan - Most Models
7. 22" Extra-Large Oven
8. Dedicated Trash Can Storage - All Fifth Wheels, N/A 278
9. Rich Solid Wood Cabinets - Elegant and Durable
10. Dark Counter Tops - Adds Warmth and Great Looks
11. Six-Panel Residential Oak Refrigerator Front
12. Residential full extension kitchen drawer glides with steel ball bearings
13. Upper cabinet doors with gas struts

FEATURES THAT YOU AND YOUR FAMILY WILL LOVE



The E-Z Camp Cougar remote helps set up camp with the touch of a button.



Setting up and taking down your awning is easier than ever with the all new Cougar electric awning.



All Cougar fifth wheels come standard with the original "Hitch Vision" and docking lights.



Cougar features dedicated trash can storage in almost every floor plan.



The Cougar docking station conveniently locates and protects your outside hook ups for quick and easy set up. *(FW only)*



Cougar provides an outside LP gas hook-up standard on all models. Our 1/2 Ton Series travel trailers offer the convenient Cougar cook center.



All Cougars have a fully enclosed and heated underbelly with enclosed gate valves.



Outside speakers are standard on all Cougars.



Another Cougar first: The rear storage rack provides a quick slide-away storage alternative. *(N/A on certain floorplans)*



Cougar's sofa converts into an air mattress bed. The mattress is inflated/deflated by an electric pump. The bottom of the sofa serves as a storage drawer.



Standard with a best in class 32" LCD and swing arm. *(FW only)*



Cougar provides an outside entertainment hook-up in the pass through storage of each fifth wheel.



Oversized pots and pans drawers make storing large items simple. *(Most models)*



Cougar uses full extension steel ball bearing drawer guides

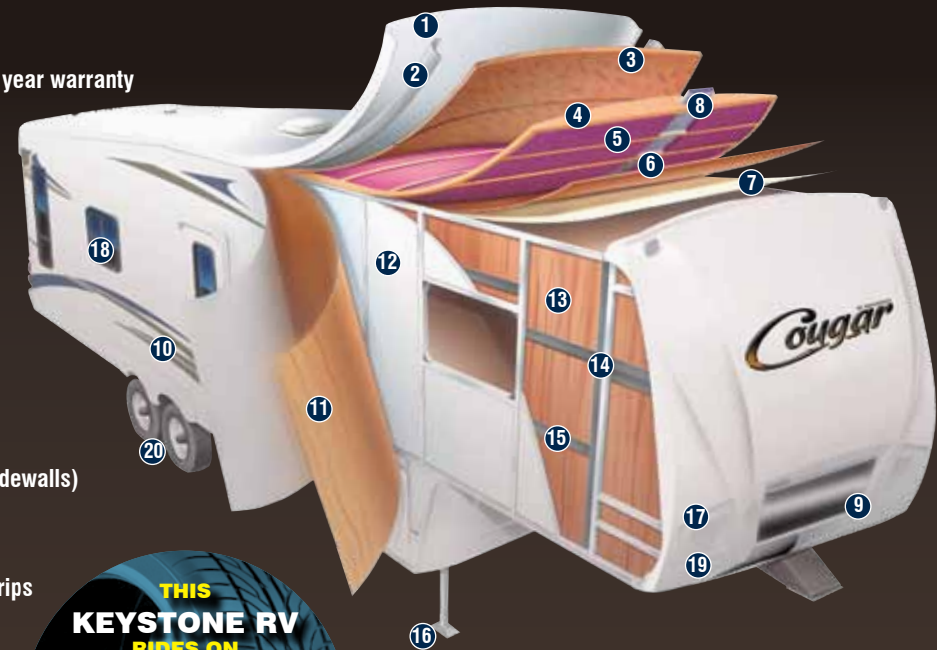


Cougar provides quick release snap jacks. Standard on all Cougar fifth wheels.

FIFTH WHEEL CONSTRUCTION

(5-SIDED ALUMINUM SUPER STRUCTURE)

- ① One-piece EPDM rubber roof membrane with 12 year warranty
- ② Radius roof transition molding
- ③ 3/8" roof decking
- ④ 5" fabricated rafters on 16" centers
- ⑤ Fiberglass insulation
- ⑥ Ceiling decking luan backer
- ⑦ Vinyl ceiling panel
- ⑧ Triple insulated, foam-core air conditioning duct
- ⑨ Hitch Vision (Patent Pending)
- ⑩ Gel-coated filon fiberglass
- ⑪ 1/8" luan board
- ⑫ Solid block insulating foam (R-14, Roof - R-9, Sidewalls)
- ⑬ Interior decorator board
- ⑭ 2" welded aluminum wall studs
- ⑮ Electro-galvanized sheet (EGS) metal backing strips
- ⑯ Easy access adjustable snap jack pins
- ⑰ Increased turning radius
- ⑱ Tinted safety glass windows
- ⑲ Docking lights
- ⑳ Ultra-lube axles



Cougar is equipped with a cable and satellite hook-up.



Cougar comes outfitted with a black tank flush hook-up. This feature keeps the black tank clean and trouble free.



With Cougar's 22" oven you can cook a full sized turkey, try that in our competitor's 16" oven.



FLOOR (R-14)

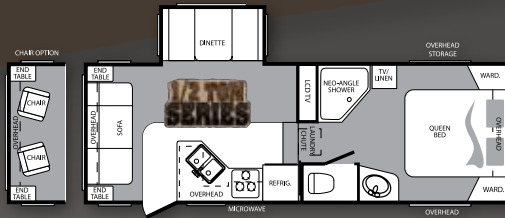
- ① 8" and 10" steel "rolled" I-beam
- ② 3" welded aluminum floor
- ③ 3" large-capacity heat duct
- ④ 1/4" enclosed underbelly
- ⑤ Welded steel cross members
- ⑥ Full radius wrap aluminum enclosure
- ⑦ Moisture barrier
- ⑧ Fiberglass insulation
- ⑨ 5/8" seamless floor decking
- ⑩ Residential-grade carpeting with stain protectant
- ⑪ 2" heat duct from furnace into underbelly
- ⑫ Heated, enclosed water lines

WESTERN FIFTH WHEELS & TRAVEL TRAILERS

8 YEARS IN A ROW, NORTH AMERICA'S TOP SELLING LIGHTWEIGHT LUXURY FIFTH WHEEL

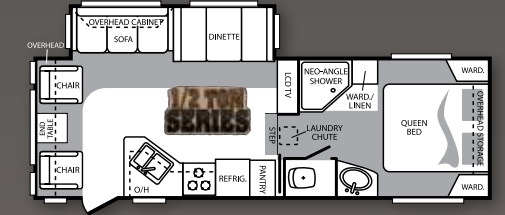
244 RLS

Weight	6630
Hitch	1220
Length	26' 9"



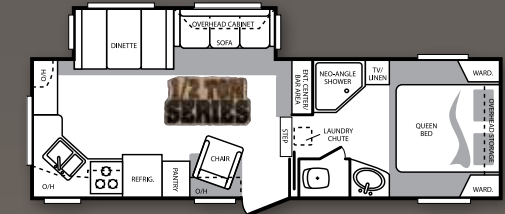
276 RLS

Weight	7220
Hitch	1380
Length	28' 9"



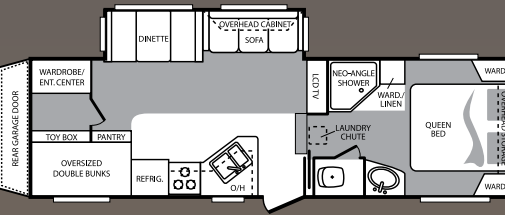
278 RKS

Weight	7200
Hitch	1140
Length	28' 8"



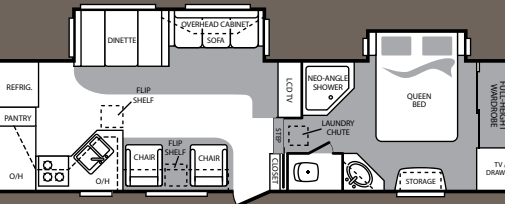
281 BHS

Weight	7936
Hitch	1535
Length	32' 7"



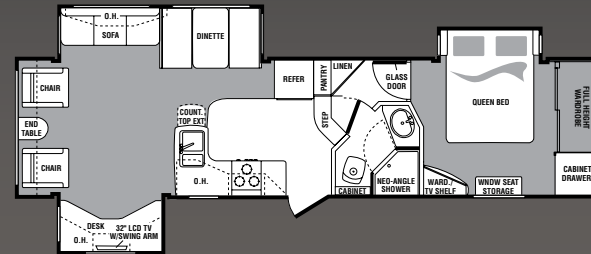
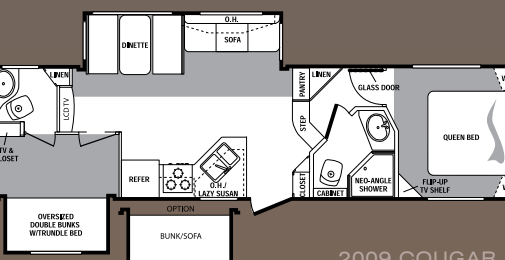
292 RKS

Weight	8441
Hitch	1660
Length	33'



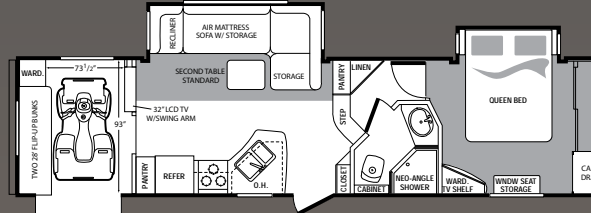
293 SAB

Weight	8786
Hitch	1375
Length	33' 5"



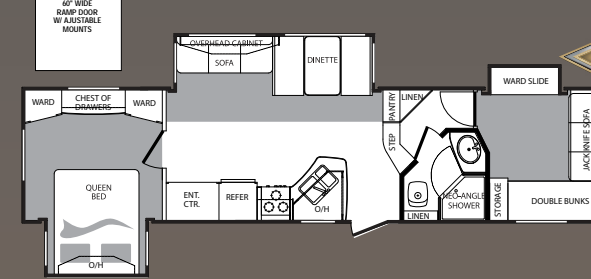
318 SAB

Weight	9132
Hitch	1500
Length	34' 7"



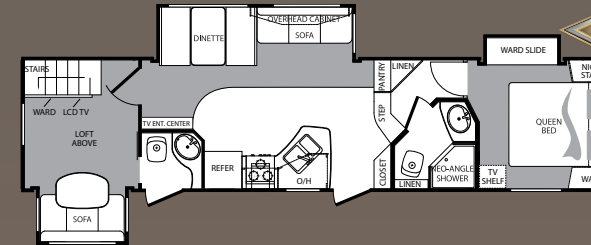
320 SRX

Weight	9117
Hitch	1920
Length	35' 3"



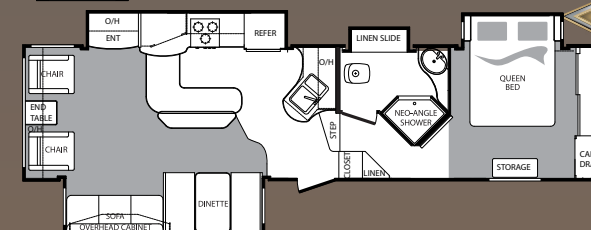
322 QBS

Weight	9435
Hitch	1460
Length	36' 6"



324 RLB

Weight	9925
Hitch	1515
Length	36' 3"

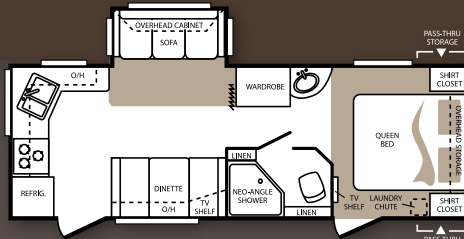


326 MKS

Weight	9990
Hitch	1565
Length	36' 2"

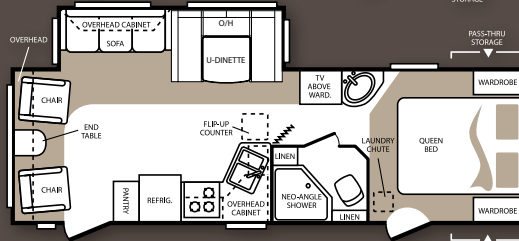
24 RKSWE

Weight	5460
Hitch	450
Length	27' 3"



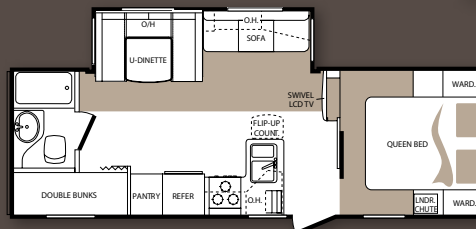
25 RLSWE

Weight	6170
Hitch	480
Length	29' 6"



26 BHSWE

Weight	5805
Hitch	575
Length	28' 11"



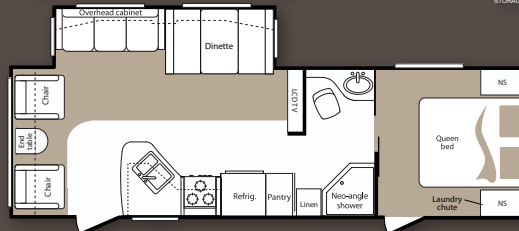
26 BRSWE

Weight	6475
Hitch	680
Length	31' 2"



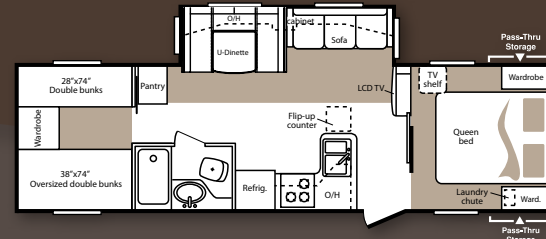
27 RLSWE

Weight	6190
Hitch	425
Length	30' 6"



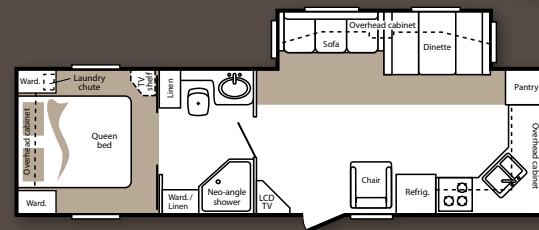
29 BHSWE

Weight	6302
Hitch	850
Length	32' 6"



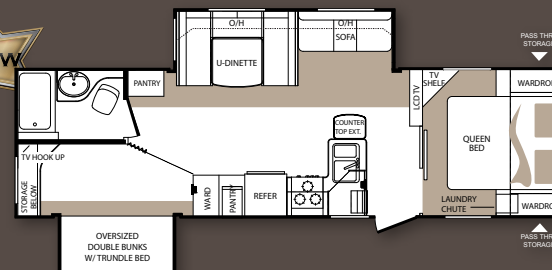
29 FKSWE

Weight	6190
Hitch	980
Length	32' 6"



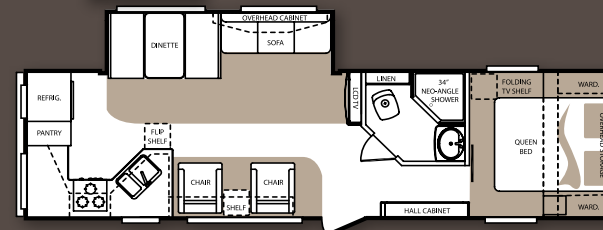
30 BHSWE

Weight	6840
Hitch	710
Length	33'



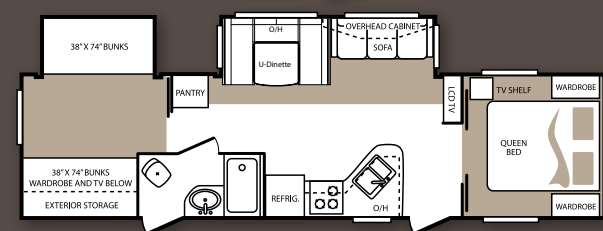
30 RKSWE

Weight	TBD
Hitch	TBD
Length	TBD



32 BHSWE

Weight	7200
Hitch	800
Length	35' 3"



Model	244RLS	276RLS	278RKS	281BHS	292RKS	293SAB	318SAB	320SRX	322QBS	324RLB	326MKS	24RKSWE	25RLSWE	26BHSWE	26BRSWE	27RLSWE	29BHSWE	29FKSWE	30BHSWE	30RKSWE	32BHSWE
Shipping Weight	6630	7220	7200	7936	8441	8786	9132	9117	9435	9925	9990	5460	6170	5940	6475	6190	6302	6190	6840	TBD	7200
Carrying Capacity	3390	2960	2740	2399	3379	2710	2528	2963	2185	1750	1975	2340	1630	1860	1325	1610	1498	1610	1360	TBD	1060
Hitch	1220	1380	1140	1535	1660	1410	1500	1920	1460	1515	1565	450	480	680	680	425	850	980	710	TBD	800
Length	26' 9"	28' 9"	28' 8"	32' 7"	33'	33' 5"	34' 7"	35' 3"	36' 6"	36' 3"	36' 2"	27' 3"	29' 6"	28' 11"	31' 2"	30' 6"	32' 6"	32' 6"	33'	TBD	35' 3"
Height	11' 8"	11' 8"	11' 8"	12'	12'	12'	12'	12'	12'	12'	12'	11' 1"	11' 1"	11' 1"	11' 1"	10' 11"	10' 11"	10' 11"	10' 11"	TBD	10' 11"
Fresh Water	60	60	60	60	60	60	60	60	60	60	60	60	60	60	60	60	60	60	60	TBD	60
Waste Water	38	38	38	38	38	76	38	38	38	76	38	38	38	38	38	38	38	38	38	TBD	38
Gray Water	76	76	76	76	76	76	76	76	76	76	76	76	38	76	76	76	38	76	76	TBD	38

COUGAR STANDARDS

- 5-sided aluminum construction
- Residential porcelain toilet with foot pedal
- Ultra lube hubs on axles (all models)
- Snap jack pins (all Fifth Wheels)
- All Fifth Wheel models at or under 12' exterior height (except 324 RLB)
- 30,000 BTU furnace
- One-piece seamless rubber roof
- All windows in main slideout open

"CAMPING IN STYLE" PACKAGE

- Day and Night Shades
- Laundry chute (some models)
- Black trim safety glass windows (tinted to keep the sun out)
- Microwave oven with turn style
- Aluminum framed sidewalls, floor, front and rear walls
- 13,500 BTU air conditioner
- Raised-panel cabinet doors

VALUE PACKAGE

- True home CD/DVD system with speakers and separate zones (12-Volt compatible); MP3 player hookup on stereo
- Gas/electric water heater with quick recovery
- Residential tiled shower/tub surround
- TV antenna
- Satellite/Cable hook-up
- Gel coated filon fiberglass
- Full walk-on roof
- Fiberglass walls
- Rear stabilizer jacks

SAFETY MUST-HAVES

- Manual backup on all main slideouts
- T-mold bulb seals on all slideouts to keep slider sweeps on your slideout (stays on in hot weather)
- LP sensor
- Smoke detector
- Fire extinguisher
- Carbon monoxide detector

DRY CAMPING FEATURES

- 12 Volt stereo/MP3 compatible
- Large fresh, grey & black tanks on all models
- All slide-out lights are 12 Volt
- Space for dual batteries
- Under 12' exterior height (on most models) to stay clear of low hanging limbs
- Entire underbelly enclosed to keep debris off tanks, water lines, etc.
- All lights 12V compatible

COUGAR OPTIONS

- 32" LCD TV (all models)*
- Outside speakers*
- Black tank flush*
- Electric awning*
- E-Z Camp Cougar remote*
- Entertainment storage hook-up (Fifth Wheels only)*
- Outside LP quick connect*
- Radial tires*
- Polar package*
- Big Mountain package (8 cu. ft. refrigerator, 16" wheels, shock absorbers) (Bed-slide FW only)
- Slide in/out bike/storage rack (320 SRX model)
- Air mattress sofa with storage
- Super sofa with air mattress and recliner (320 only)
- Swivel rocker (244, 25RLSWE, 27RLSWE, 276, 278, 29FKWE, 292, 30RKSWE, 318, 326)
- Second swivel rocker
- Free standing dinette
- 15,000 BTU A/C

CONVENIENCE PACKAGE

- Outside shower*
- Residential refrigerator front*
- Spare tire*
- XL grab handle*

* Mandatory option

DECOR OPTIONS



AUTUMN NIGHT



BAYLEAF



SEDONA SUEDE



2642 Hackberry Drive, Goshen, Indiana 46526 • 574-535-2100

Product information is as accurate as possible as of the date of publication of this brochure. Features, floor plans, and specifications are subject to change without notice. Please also consult Keystone's web site at keystonerv.com for more current product information and specifications. Tow Vehicle Disclaimer: CAUTION: Owners of Keystone recreational vehicles are solely responsible for the selection and proper use of tow vehicles. All customers should consult with a motor vehicle manufacturer or their dealer concerning the purchase and use of suitable tow vehicles for Keystone products. Keystone disclaims any liability or damages suffered as a result of the selection, operation, use or misuse of a tow vehicle. KEYSTONE'S LIMITED WARRANTY DOES NOT COVER DAMAGE TO THE RECREATIONAL VEHICLE OR THE TOW VEHICLE AS A RESULT OF THE SELECTION, OPERATION, USE OR MISUSE OF THE TOW VEHICLE. March 2009



“Cougar is redefining casual luxury with the introduction of “Sedona Suede” interior decor. “Autumn Night” is a color infused neutral coloring with a traditional look. “Bayleaf” takes green to a brighter, richer level by combining rich, textured chenille with a classic tapestry accented by warm beige and cayenne. Our goal is to create “practical” luxury with each interior by bringing the best from home fashion into each Cougar Travel Trailer and Fifth Wheel.”

Cougar Interior Design Team

DARE TO COMPARE

- #1 selling fifth wheel in its class (8 years in a row)
- Highest trade-in and resale value in the industry on average
- Hitch Vision (patent pending) front cap with docking lights
- Exclusive factory installed bike/storage rack on most Fifth Wheels and Travel Trailers
- Fully enclosed, underbelly with heated and enclosed dump valves
- 16.2 gallons per hour – quick recovery water heater (great for bunkhouses)
- Oversized pass-thru storage doors on both sides of each coach (with divider from front battery compartment)
- Slideout seal is mounted in a “T” track (no sticky tape to hold slide seals on)
- Cougar – Executive Chef Kitchen
- Easy access laundry chute (most models)
- Porcelain - foot flush toilets
- Solid lambrequin leg window treatments with Day and Night Shades standard on all models
- Extra large picture window at all dinettes, slide-out windows open for cross ventilation
- Five side welded aluminum super structure
- R9 sidewall insulation, R14 floor and ceiling insulation and R15 astrofoam in the slideout
- Fully ducted air conditioning featuring triple insulated, foil wrapped, light weight ducts
- 12 Volt compatible for dry camping