

BULLET

A NEW ERA IN ULTRA LITES

BULLET



Lightweight Vehicles

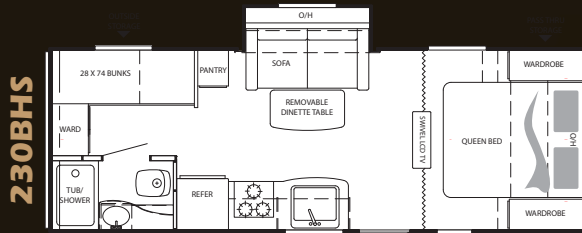


Crossover Vehicles

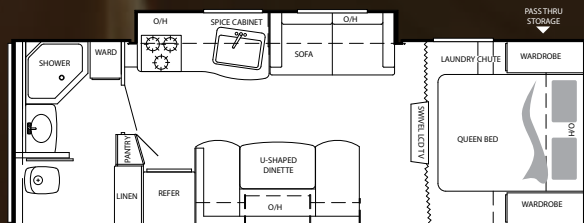


1/2 Ton Trucks

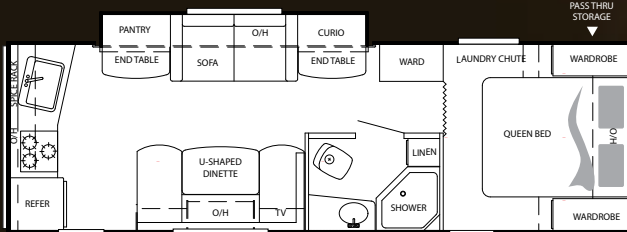




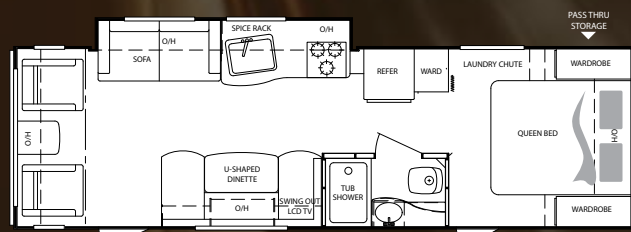
230BHS



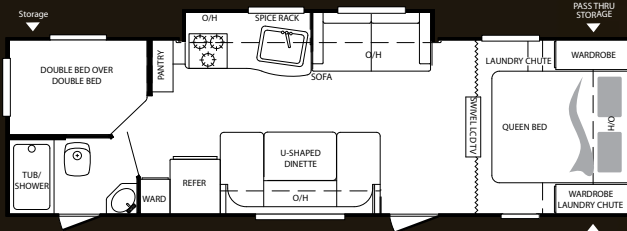
246RBS



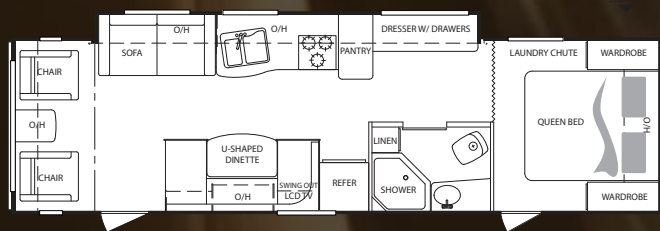
250RKS



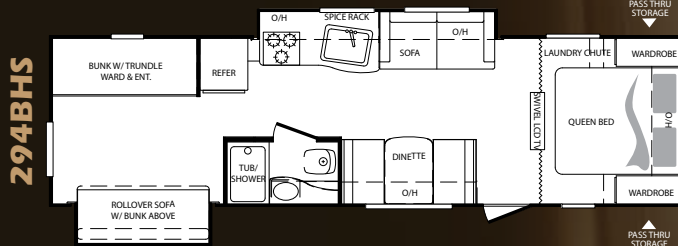
278RLS



281BHS

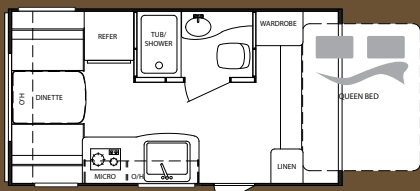


288RLS

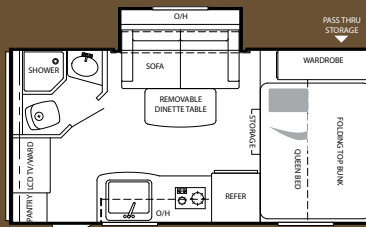


294BHS

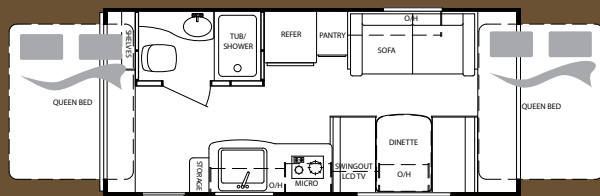
MICRO SERIES



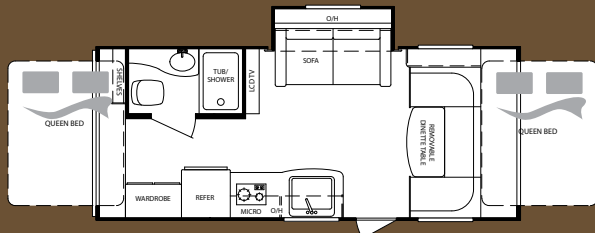
151EXP



180FBS



188EXP



200EXP



2642 Hackberry Drive
Goshen, Indiana 46526
(574) 535-2100

A KEYSTONE RV COMPANY
www.keystonerv.com



Product information is as accurate as possible as of the date of publication of this brochure. Features, floor plans, and specifications are subject to change without notice. Please also consult Keystone's web site at keystonerv.com for more current product information and specifications. **Tow Vehicle Disclaimer.** CAUTION: Owners of Keystone recreational vehicles are solely responsible for the selection and proper use of tow vehicles. All customers should consult with a motor vehicle manufacturer or their dealer concerning the purchase and use of suitable tow vehicles for Keystone products. Keystone disclaims any liability or damages suffered as a result of the selection, operation, use or misuse of a tow vehicle. KEYSTONE'S LIMITED WARRANTY DOES NOT COVER DAMAGE TO THE RECREATIONAL VEHICLE OR THE TOW VEHICLE AS A RESULT OF THE SELECTION, OPERATION, USE OR MISUSE OF THE TOW VEHICLE. 11/2009

	230BHS	246RBS	250RKS	278RLS	281BHS	288RLS	294BHS	151EXP	180FBS	188EXP	200EXP
Shipping Weight	4360	4795	4885	4900	5090	TBD	5575	TBD	3555	TBD	4090
Carrying Capacity	2115	1624	1590	2555	2425	TBD	2025	TBD	1645	TBD	2365
Hitch	290	475	415	475	455	515	540	TBD	290	TBD	455
Ext. Length	27'	27' 11"	29' 7"	30' 6"	31' 8"	33' 8"	33' 4"	TBD	19' 10"	TBD	23' 7"
Ext. Width	8'	8'	8'	8'	8'	8'	8'	TBD	8'	TBD	8'
Ext. Height	10' 3"	10' 3"	10' 3"	10' 3"	10' 3"	10' 5"	10' 5"	TBD	10' 3"	TBD	10' 3"
Fresh Water	41	41	41	41	41	41	41	TBD	40	TBD	41
Waste Water	30	30	30	30	30	30	30	TBD	30	TBD	30
Grey Water	30	30	30	30	30	30	30	TBD	30	TBD	30
LPG	40	40	40	40	40	40	40	TBD	40	TBD	40