

WESTERN EDITION

Cougar
by Keystone

FIFTH WHEELS

www.keystone-cougar.com

Cougar by Keystone



WHERE LUXURY & LIGHTWEIGHT MEET



Cougar
by Keystone



IT IS OUR GOAL TO GIVE EVERY COUGAR A RESIDENTIAL LOOK AND FEEL WITH ADDED FEATURES THAT YOU AND YOUR FAMILY WILL APPRECIATE.

- Large Bathroom Sink
- Porcelain Foot Flush Toilet
- Residential Bedroom and Bathroom Door Heights
- LED Vanity Mirror Lights
- Residential Comfort Camp III Pillow Top Mattress (Silver Label Edition)
- Unbeatable Wardrobe Storage
- Large Vanity Mirror
- Largest Picture Windows in its Class with Day and Night Shades



331MKSWE (SHOWN IN AUBURN DECOR AND WITH OPTIONAL FIREPLACE)



331MKSWE

Designed with Your Family's Needs in Mind



327RESWE (SHOWN IN AUTUMN NIGHT DECOR)

- Custom Colored Fiberglass Front Cap
- Upgraded Residential Beauflor® Resilient Flooring
- Solid Surface Countertops
- Graphics Package
- Upgraded Comfort Camp III Mattress (Silver Label Edition)
- Main Entry Step Light
- Battery Disconnect



THE 327RESWE HAS QUICKLY BECOME ONE OF OUR MOST POPULAR MODELS.

The interior boasts an abundance of storage space and its residential elegance is topped off by extra large windows (all of which open for cross ventilation).



AVAILABLE ON COUGAR 327RESWE AND 331MKSWE

EXCLUSIVE

Cougar's one of a kind ottoman functions as a foot rest, storage area, coffee table or even as a sofa extension.

Having guests? Simply slide the ottoman under the sofa and fold out the air mattress hide-a-bed for a great night's sleep.

Storage, Comfort and Convenience

SRX



325SRXWE LIVING AREA (SHOWN IN AUTUMN NIGHT DECOR)



Plenty of room for golf cart, four wheeler, dirt bikes or full dressed cruiser.

COUGAR 325SRXWE GARAGE



ADJUSTABLE RAMP LEGS

Part of what has made Cougar such a success over the years is our ability to incorporate customers wants and needs into a variety of floorplans. The Cougar 325SRXWE combines a garage model fifth wheel with a residential main living area. This creates the perfect unit for a variety of hobbies.

Variety

COUGAR

4

WWW.KEystone-COUGAR.COM



LOOK FOR WALK
AROUND VIDEOS
ON OUR WEBSITE!



327RESWE KITCHEN

COUGAR "EXECUTIVE CHEF KITCHEN" INCLUDES:

- | | | |
|--------------------------------------|---|---|
| ① Countertop Extension – Most Models | ⑤ 22" Oven | ⑨ 8 Cubic Foot Refrigerator – N/A on 1/2 Ton Series |
| ② Sink Covers | ⑥ Easy to Reach Microwave Oven | ⑩ Best in Class Pantry Storage |
| ③ Dedicated Trash Can Storage | ⑦ Solid Cherry Wood Cabinet Doors and Drawers | ⑪ Full Extension Drawer Guides |
| ④ Large Solid Surface Countertop | ⑧ Gas Struts on Overhead Cabinet Doors | ⑫ Utensil Drawer – All Models |
| | | ⑬ Pots and Pans Drawers – Most Models |



KITCHEN STORAGE



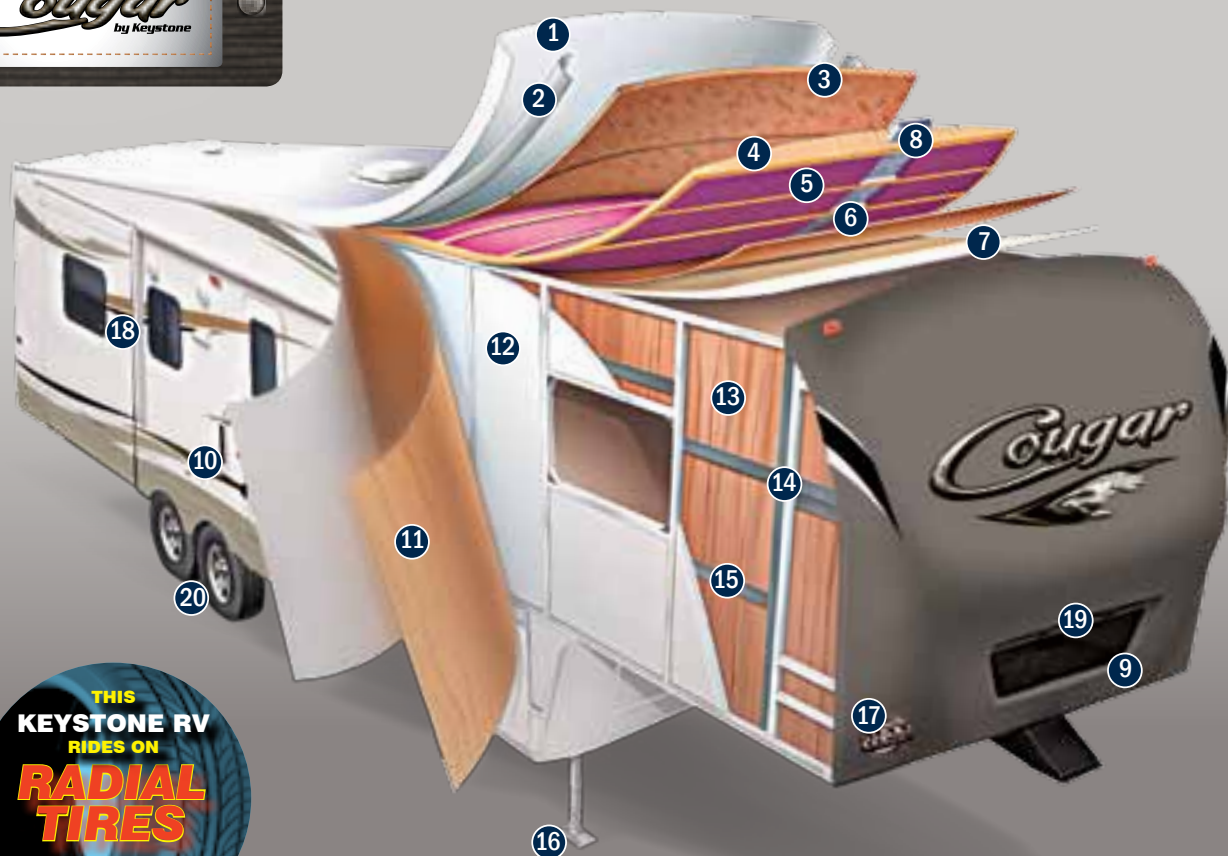
Cougar's commitment to having the **best storage in its class** is evident in the deep pots and pan drawers as well as our large easy to reach pantries.



COUGAR FIFTH WHEELS HAVE SET A HIGHER STANDARD WITH **BEST IN CLASS** PASS THROUGH STORAGE.

Maximum Storage Capacity

Cougar
by Keystone



(5-SIDED ALUMINUM SUPER STRUCTURE)

- 1 One-piece EPDM rubber roof membrane with 12 year warranty
- 2 Radius roof transition molding
- 3 3/8" roof decking
- 4 5" fabricated rafters on 16" centers
- 5 Fiberglass insulation (R-14)
- 6 Ceiling decking Luan backer
- 7 Vinyl ceiling panel
- 8 Triple insulated, foam-core air conditioning duct
- 9 Hitch Vision (Patented)
- 10 Gel-coated Filon® fiberglass sidewall
- 11 1/8" Luan board (second layer in select models)
- 12 Solid block foam insulation (R-9)
- 13 Interior decorator wall board
- 14 2" welded aluminum wall studs
- 15 Electro-galvanized sheet (EGS) metal backing strips
- 16 Easy access adjustable snap jack pins
- 17 Increased "Max Turn" turning radius
- 18 Tinted safety glass windows
- 19 Docking lights
- 20 E-Z lube axles

THIS
KEYSTONE RV
RIDES ON
**RADIAL
TIRES**

MEETS OR EXCEEDS ALL U.S.
DEPARTMENT OF TRANSPORTATION
(D.O.T.) SAFETY STANDARDS

FLOOR (R-14) + (R-15)

- 1 8" and 10" Steel "rolled" I-beam
- 2 3" Welded aluminum floor joists
- 3 3" Large-capacity insulated heat duct
- 4 1/4" Enclosed underbelly
- 5 Welded steel cross members
- 6 Full radius wrap aluminum enclosure
- 7 Woven moisture and vapor barrier
- 8 Fiberglass insulation (R-14)
- 9 5/8" Seamless floor decking
- 10 Carpet padding
- 11 Residential-grade carpeting with stain protectant
- 12 2" Heat duct from furnace into underbelly
- 13 Heated, enclosed water lines
- 14 Astro-Foil insulation barrier (R-15)
- 15 Upgraded residential Beauflor® resilient flooring



Cougar Construction

Cougar
by Keystone

PATENTED
**HITCH
VISION**
"NO LOOKING
BACK"



COUGAR "HITCH VISION"

Hitch Vision moves the dial forward in what customers expect from an RV. There's no looking back!

Hitch Vision gives the fifth wheel user complete confidence to back up and align their truck to Cougar's extended hitch pin using only the built-in mirror for guidance. Dual automotive LED docking lights, which can be controlled by the E-Z Camp Cougar Remote, allow you to load or unload camping gear day or night. (Hitch Vision also comes in handy when using the E-Z Camp Cougar Remote to raise and lower landing gear.)

Once you've used Hitch Vision, "there's no looking back" to the inconvenience of turning or straining to see your fifth wheel.

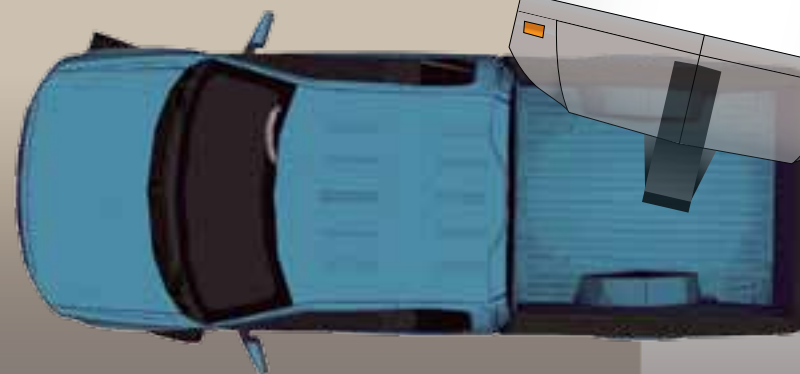


MAX TURN

Combining focused design and unique product specifications, Max Turn Technology is the leader in optimum turn radius:

Unlike the competition, Cougar uses continuous contoured tubular steel for optimum strength and support behind the engineered tapered fiberglass front cap.

Also, Cougar is equipped with a heavy duty extended hitch. Combined - Max Turn Technology makes turning and maneuvering a breeze.



LOOK FOR WALK
AROUND VIDEOS
ON OUR WEBSITE!

Advancing the Industry

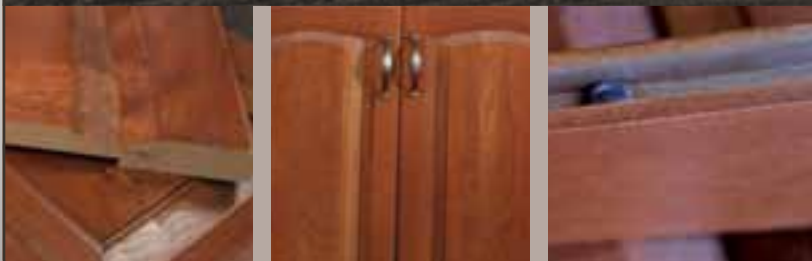
Cougar
by Keystone



COUGAR HAS EARNED THE DSI AWARD AN UNPRECEDENTED 5 YEARS IN A ROW!

THE DSI (DEALER SATISFACTION INDEX) AWARD RATES THE LEVEL OF SATISFACTION THE DEALERS HAVE IN A MANUFACTURER. IT RATES MANUFACTURERS IN MANY AREAS SUCH AS: PRODUCT DESIGN, PRODUCT RELIABILITY & QUALITY, WARRANTY SUPPORT, AND PARTS SUPPORT.

SELECT GRADE CHERRY WOOD



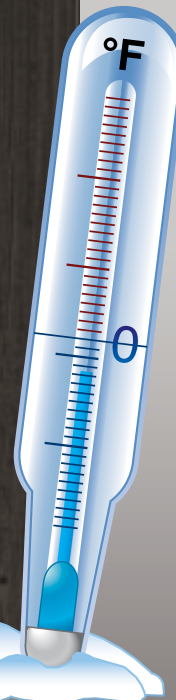
At Cougar we are always trying to think of new ways to add value. With the new "Cougar Cherry" cabinet doors we were the first in our class to use true select grade cherry wood on ALL our doors and drawers. We also use teflon spacer balls in all of our cabinet doors to prevent warping, bending and cracking.



ZERO° DEGREE RATED

Cougar has been zero degree tested. The Polar Package Plus allows you to camp to zero degrees without worry of your tanks or water lines freezing up.

We also add upgraded insulation to our slide-out floors to control the hot and cold exchange and unlike our competition we merge our skirt metal to the I-Beam for complete enclosure of your fifth wheel underbelly.



CONTROL EVERYTHING WITH THE COUGAR E-Z CAMP REMOTE

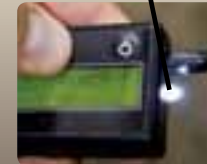


Docking Light



Landing Gear

Electric Slide Out



High Emittance
LED Flashlight

Electric Awning



Cougar Command Center features back lighted switches and conveniently places all of your controls in one place.



Cougar comes outfitted with a black tank flush hook-up. This feature keeps the black tank clean and trouble free.



EXCLUSIVE



ROCKFORD FOSGATE STEREO

CD/DVD, AM/FM, MP3, AUX INPUT, USB PORT

NEW!



MOR/ryde Suspension comes standard on all Cougar fifth wheels.

**32" LCD TV
BEST IN CLASS
WITH SWING ARM**



These slam baggage doors offer added security and convenience while providing better insulation.



Cougar offers an optional fireplace in the 318, 323, 325, 327, 330 and 331 floorplans



Another Cougar first: The rear storage rack provides a quick slide-away storage alternative. (N/A 276 and 325)



The Cougar docking station conveniently locates and protects your outside hook ups for quick and easy set up. Also includes battery disconnect. (FW only)



Cougar's oversized sofa converts into a true 60" x 80" queen sized air mattress bed which is easy to inflate and deflate by an electric pump.



Cougar provides an outside LP gas hook-up that is standard on all models.

**ADJUSTABLE
SMART
SLIDE
FREE STANDING
DINETTE**

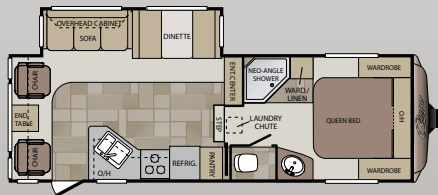


The exclusive "Smart Slide" free standing table slides back and forth to increase space between seating and the fixed dinette table.

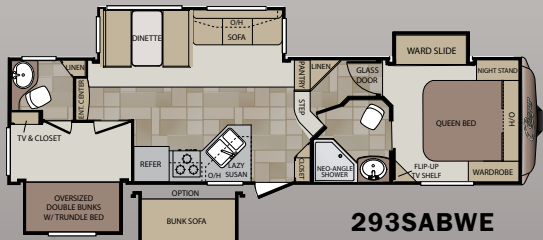


The Cougar Advantage

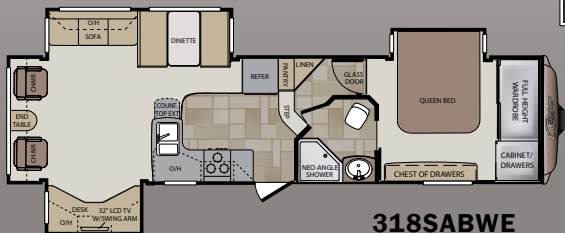
FIFTH WHEELS



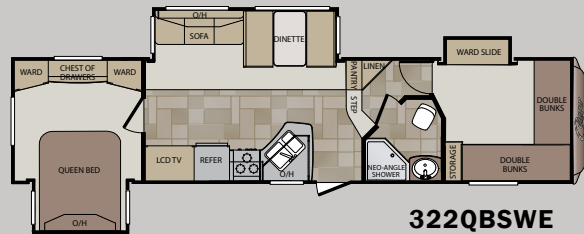
276RLSWE



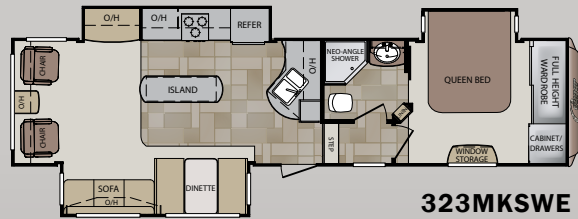
293SABWE



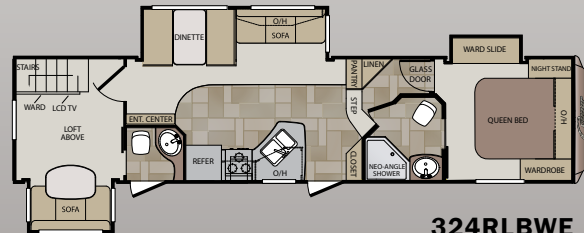
318SABWE



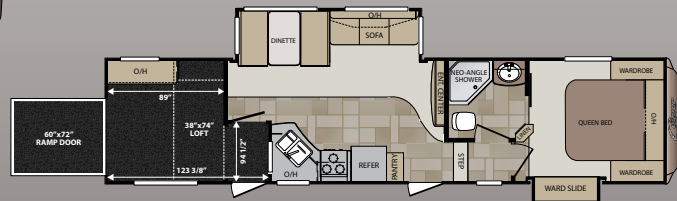
322QBSWE



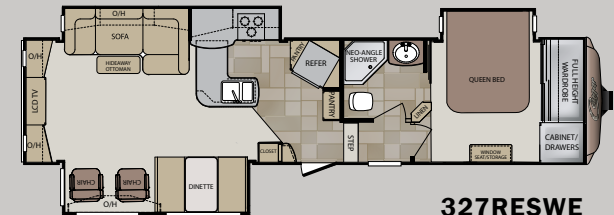
323MKSWE



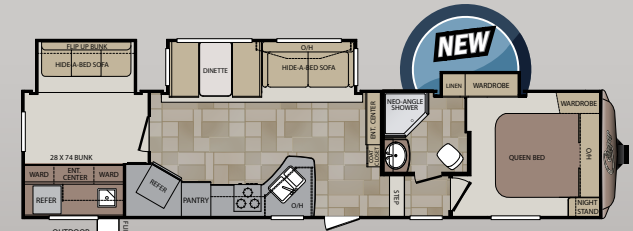
324RLBWE



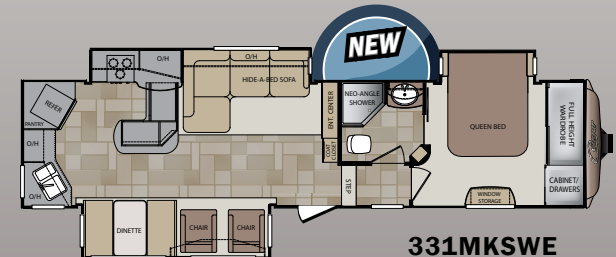
325SRXWE



327RESWE



330RBKWE



331MKSWE

FIFTH WHEELS

MODEL	276RLSWE	293SABWE	318SABWE	322QBSWE	323MKSWE	324RLBWE	325SRXWE	327RESWE	330RBKWE	331MKSWE
Shipping Weight	7143	9128	9467	9395	9676	10081	9317	10131	9945	9980
Carrying Capacity	3037	2802	2513	2580	2279	1849	2883	1814	2320	2110
Hitch	1380	1530	1580	1575	1585	1530	1800	1545	1865	1690
Length	28' 9"	33' 5"	34' 7"	36' 6"	36' 1"	36' 3"	36' 7"	36' 5"	37' 4"	36' 6"
Height	11' 8"	12' 3"	12'	12'	12'	13'	13'	12'	12' 10"	12'
Fresh Water	60	60	60	60	60	60	60	60	60	60
Waste Water	38	76	38	38	38	76	38	38	38	38
Gray Water	76	76	76	76	76	76	76	76	76	76
LPG Capacity	60	60	60	60	60	60	60	60	60	60
Awning Length	19'	17'	16'	17'	11'	17'	17'	12'	19'	11'



VIEW SNAPSHOT PHOTOS OF
FLOORPLAN INTERIORS AT
WWW.KEystone-COUGAR.COM

COUGAR STANDARDS

- Residential porcelain toilet with foot pedal
- E-Z lube hubs on axles (all models)
- Snap jack pins (all fifth wheels)
- All Fifth Wheel models at or under 12' exterior height (except 324, 325)
- 30,000 BTU furnace
- One-piece seamless rubber roof
- All windows in main slide out open
- Cherry wood cabinet doors
- Solid hardwood slide fascia

"CAMPING IN STYLE"*

PACKAGE

- Day and Night Shades
- Laundry chute (some models)
- Black trim safety glass windows (tinted to keep the sun out)
- Microwave oven with turn style
- Aluminum framed sidewalls, floor, front and rear walls, slide rooms
- 13,500 BTU air conditioner
- Raised-panel cabinet doors
- Cougar Comfort Camp III pillow top mattress

VALUE PACKAGE*

- True home CD/DVD system with speakers and separate zones (12-Volt compatible); MP3 player hookup on stereo
- Gas/electric water heater with quick recovery
- Residential shower/tub surround
- TV antenna
- Satellite/Cable hook-up
- Gel coated Filon® fiberglass
- Full walk-on roof
- Fiberglass walls
- Rear stabilizer jacks
- MOR/ryde CRE/3000 Suspension
- Max Turn Technology front cap (fifth wheels only)

CONVENIENCE PACKAGE

- Outside shower*
- Residential refrigerator front*
- Spare tire*
- XL grab handle*

STANDARDS, OPTIONS AND DECORS

SAFETY MUST-HAVES*

- Manual backup on all main slide outs
- T-Mold bulb seals on all slide outs to keep slider sweeps on your slide out (stays on in hot weather)
- LP sensor
- Smoke detector
- Fire extinguisher
- Carbon monoxide detector

DRY CAMPING FEATURES

- 12 Volt stereo/MP3 compatible
- Large fresh, gray & black tanks (all models)
- All slide-out lights are 12 Volt
- Space for dual batteries
- Under 12' exterior height (most models)
- Entire underbelly enclosed to keep debris off tanks, water lines, etc.
- All lights 12V compatible

COUGAR OPTIONS

- 32" LCD TV (fifth wheels only)*
- Outside speakers*
- Black tank flush*
- Electric awning*
- Cougar remote*
- Entertainment storage hook-up (fifth wheels only)*
- Outside LP quick connect*
- Radial tires*
- Polar Package Plus*
- 8 cu. ft. refrigerator* (N/A on 276)
- 16" wheels* (N/A on 276)
- Dual pane windows
- 19" LCD TV (324, 322, 325)*
- Slide in/out bike/storage rack* (N/A on 325, 276)
- Air mattress sofa with storage
- 50 Amp service*
- Swivel rocker
- Slam latch baggage doors*

- Fireplace (318, 323, 325, 327, 330, 331 only)
- Second swivel rocker
- "Smart Slide" free standing dinette (mandatory in 327RES)
- 15,000 BTU A/C
- Aluminum wheels
- Recliners (327, 318, 326, 292 only)

SILVER LABEL PACKAGE*

- Custom colored fiberglass front cap
- Upgraded residential Beauflor® resilient flooring
- Solid surface countertops
- Silver label graphics package
- Upgraded Comfort Camp III pillow top mattress (silver label edition)
- Main entry step light
- Battery disconnect

* Mandatory option



DARE TO COMPARE

- #1 selling fifth wheel in its class (11 years in a row)
- Highest trade-in and resale value in the industry on average
- Hitch Vision (patented) front cap with docking lights & Max Turn Technology (fifth wheels only)

- Exclusive factory installed bike/storage rack on most fifth wheels and travel trailers
- Fully enclosed, underbelly with heated and enclosed dump valves
- 16.2 Gallons per hour – quick recovery water heater (great for bunkhouses)
- Oversized pass-thru storage doors
- Slide out seal is mounted in a "T" track (no sticky tape to hold slide seals on)
- Solid surface countertops

- Extra large slide-out windows open for cross ventilation
- Panoramic picture window at all dinettes
- Day/night shades
- Porcelain foot flush toilets
- Five side welded aluminum super structure
- R-9 sidewall, R-14 roof, R14+R15 floor insulation and R-15 astro-foil in the slide out
- Fully ducted air conditioning featuring triple insulated, foil wrapped, light weight ducts

- 12 Volt compatible for dry camping
- Outside docking station (fifth wheels only)
- Back lit inside command center (most fifth wheels)
- True cherry wood cabinet doors
- Cougar remote with flashlight
- Polar package plus
- Full extension drawer guides
- Black tank flush
- Battery disconnect



LOOK FOR WALK
AROUND VIDEOS
ON OUR WEBSITE!

Discover Which Options are Right for You