

SUPER LITE TRAVEL TRAILERS • SUPER LITE FIFTH WHEELS • BEST IN CLASS FIFTH WHEELS

**LAREDO**  
By Keystone

# LAREDO

*By Keystone*

**DSI**  
Annual RVDA DEALER  
SATISFACTION INDEX  
AWARD WINNER



**SUPER LITE  
TRAVEL TRAILERS**



**SUPER LITE  
FIFTH WHEELS**



**LIFE-SIZE  
FIFTH WHEELS**



## LIFE-SIZE FEATURES



# LAREDO

By Keystone



## **SUPER LITE TRAVEL TRAILERS**

Aerodynamically designed, feature-packed light weight travel trailer.

..... see page 3



## **SUPER LITE FIFTH WHEELS**

Aerodynamically designed, feature-packed light weight fifth wheel.

..... see page 6



## **LIFE-SIZE FIFTH WHEELS**

Aerodynamically designed, "best in class" easy to tow luxury fifth wheel.

..... see page 10

**MORE BEST IN CLASS FEATURES  
THAN THE COMPETITION**



**294RK SUPER LITE TRAVEL TRAILER**  
Shown in Sunset Decor





# SUPER-LITE TRAVEL TRAILERS



## INTERIOR FEATURES

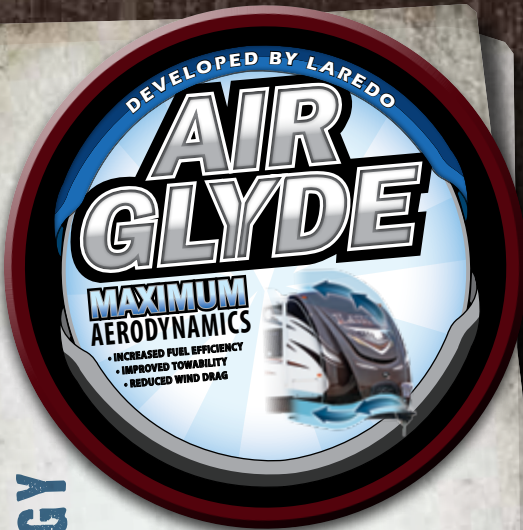
- A. 40" LCD HDTV
- B. Arched Roof Rafters
- C. Outside Kitchen
- D. Residential High Rise Faucet
- E. Large Single Basin Sink
- 80" Wide U-Shaped Dinette
- Residential 60" x 80" Queen Bed
- 50" Wide, 6' Tall Shower
- Ready for Second Air Conditioner
- 50 amp service

## EXTERIOR FEATURES

- Fiberglass Front Cap with Air Glyde Technology
- Power Tongue Jack
- Power Adjustable Awning
- Aluminum Wheels
- Cable Jack and 110V Outlet
- Black Tank Flush
- Motion Sensor Porch Light



# AIR GLYDE TECHNOLOGY



Laredo front caps are designed to aggressively deflect wind from all angles (see FIGURE A). With a 20% more aerodynamic front cap, wind drag is reduced and fuel mileage is increased.

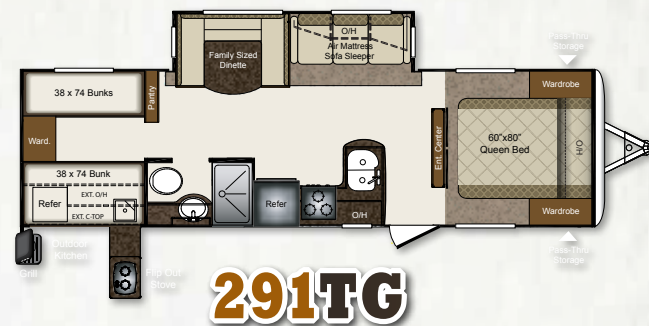
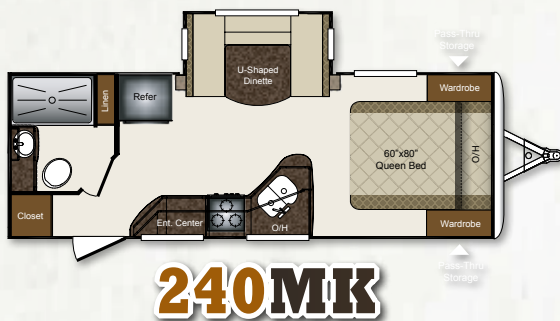


# CONSTRUCTION



- |   |  |                                      |
|---|--|--------------------------------------|
| 1 Gel Coated Filon Exterior             | 9 2nd Layer Floor Decking with Staggered Seams | 18 Roof Decking                      |
| 2 Luan Layer                            | 10 Hi-Density Block Foam Insulation            | 19 R-11 Insulation                   |
| 3 Hi-Density Block Foam Insulation      | 11 Aluminum Floor Studs                        | 20 5" Crowned / Stamped Roof Trusses |
| 4 Interior Wallboard                    | 12 3rd Layer Floor Decking                     | 21 Sloped Slide Roof                 |
| 5 Total Aluminum Frame                  | 13 Moisture Barrier Wrap                       | 22 Wiper Seals                       |
| 6 Residential Grade Carpet and Linoleum | 14 Fiberglass Batten Insulation                | 23 Bulb Seal in T-Track              |
| 7 Carpet Padding                        | 15 Underbelly Heat Duct                        | 24 Air Glyde Front Cap w/LP Storage  |
| 8 1st Layer Floor Decking               | 16 PACO I-Beam Frame                           | 25 EZ Lube Axles                     |
|   | 17 One Piece Rubber Roof                       | 26 Radial Tires                      |
|   |  | 27 Radius Entry Steps                |





TRAVEL TRAILERS	240MK	291TG	294RK	296RL	301RL	303TG	308RE
SHIPPING WEIGHT	5300	6535	6780	6720	6825	7365	7265
CARRYING CAPACITY	1900	1665	1720	1780	2175	1635	1735
HITCH WEIGHT	590	860	850	820	910	820	760
EXTERIOR LENGTH	27' 7"	33' 3"	34' 8"	33' 9"	34' 4"	35' 8"	35' 6"
EXTERIOR WIDTH	8'	8'	8'	8'	8'	8'	8'
EXT. HEIGHT - A/C TOP	10' 7"	11' 1"	11' 1"	11' 1"	11' 1"	11' 1"	11' 1"
FRESH WATER (GAL.)	43	43	43	43	43	43	43
WASTE WATER (GAL.)	30	30	30	30	30	30	30
GRAY WATER (GAL.)	30	30	60	30	60	30	30
LP CAPACITY (LBS.)	60	60	60	60	60	60	60





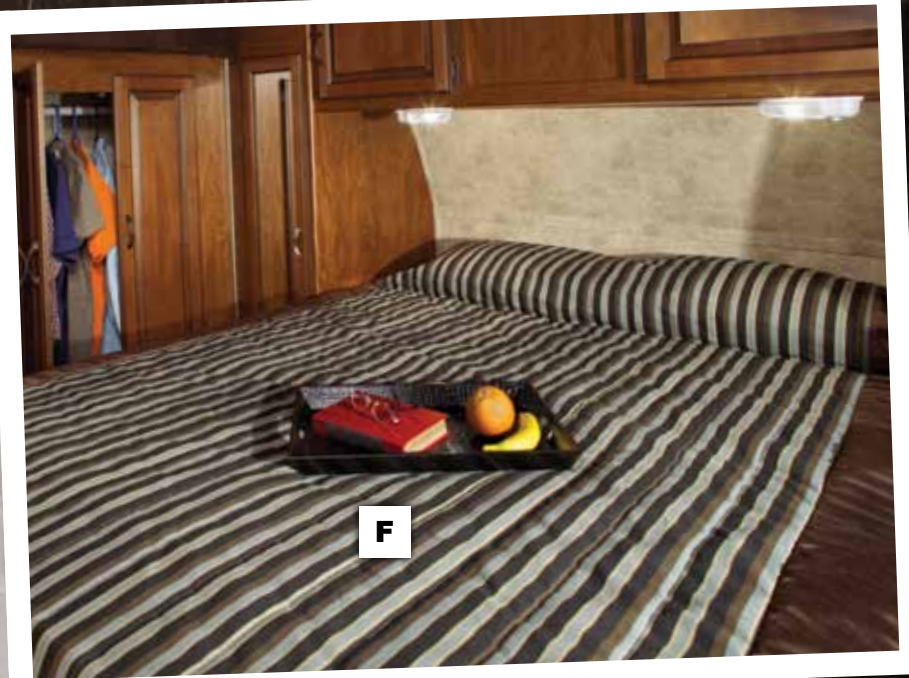
A

B

C

D





## SUPER-LITE FIFTH WHEELS



### INTERIOR FEATURES

- A. 8 CU. FT. Refrigerator with Raised Panel Fronts
- B. Raised Panel Cabinet Throughout
- C. 12V DVD/CD/AM/FM/MP3 Player
- D. Crown Molding
- E. 50" Wide, 6' Tall Shower
- F. Queen Size Pillow Top Mattress
- High Rise Faucet
- Kitchen Backsplash

### EXTERIOR FEATURES

- Water Works Utility Center
- Electric Awning
- Equa-Flex Suspension
- Heated Pass-Thru Storage
- Hitch Assist Mirror w/2 LED Lights
- Electric Jacks and Landing Gear
- Separate Battery Compartment

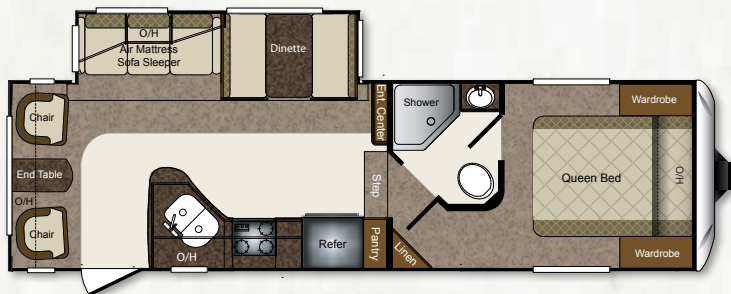


## SUPER-LITE FIFTH WHEELS



- |                                    |  |                                      |
|------------------------------------|--|--------------------------------------|
| 1 Gel Coated Filon Exterior        | 9 2nd Layer Floor Decking with Staggered Seams | 20 5" Crowned / Stamped Roof Trusses |
| 2 Luan Layer                       | 10 Hi-Density Block Foam Insulation            | 21 Sloped Slide Roof                 |
| 3 Hi-Density Block Foam Insulation | 11 Aluminum Floor Studs                        | 22 Wiper Seals                       |
| 4 Interior Wallboard               | 12 3rd Layer Floor Decking                     | 23 Bulb Seal in T-Track              |
| 5 Total Aluminum Frame             | 13 Moisture Barrier Wrap                       | 24 Max Turn Aerodynamic Front Cap    |
| 6 Residential Grade Linoleum       | 14 Fiberglass Batten Insulation                | 25 EZ Lube Axles                     |
| 7 Carpet Padding                   | 15 Underbelly Heat Duct                        | 26 Equa-Flex Suspension System       |
| 8 1st Layer Floor Decking          | 16 PACO I-Beam Frame                           | 27 Radial Tires                      |
|                                    | 17 One Piece Rubber Roof                       | 28 Radius Entry Steps                |
|                                    | 18 Roof Decking                                |                                      |
|                                    | 19 R-11 Insulation                             |                                      |

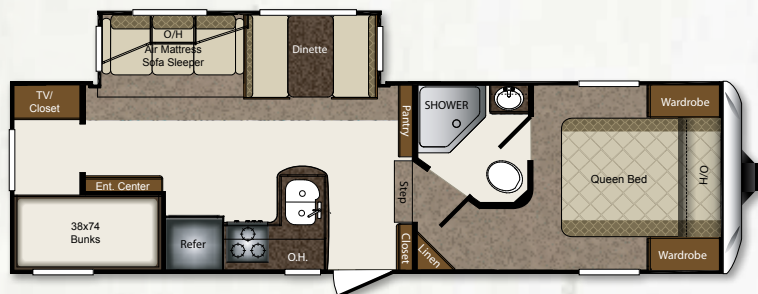




**264SRL**



**268SRE**



**275SBH**



**289SRE**



Image 2/8  
Optional free-standing dinette



Get the free app at  
<http://gettag.mobi>  
and scan this tag.

### SCAN FOR SNAPSHOTS

Scan the QR code above and look for the camera symbol to view interior snapshot photos on our website.

SL FIFTH WHEELS	264SRL	268SRE	275SBH	289SRE
SHIPPING WEIGHT	6910	7365	7120	7735
CARRYING CAPACITY	3090	2635	2880	2265
HITCH WEIGHT	1255	1435	1195	1395
EXTERIOR LENGTH	30' 1"	29' 9"	30' 8"	31'
EXTERIOR WIDTH	8'	8'	8'	8'
EXT. HEIGHT - A/C TOP	12' 3"	12' 3"	12' 3"	12' 3"
FRESH WATER (GAL.)	45	45	45	45
WASTE WATER (GAL.)	30	30	30	30
GRAY WATER (GAL.)	60	60	60	30
LP CAPACITY (LBS.)	60	60	60	60

**WWW.KEystone-LAREDO.COM**



# LAREDO

By Keystone



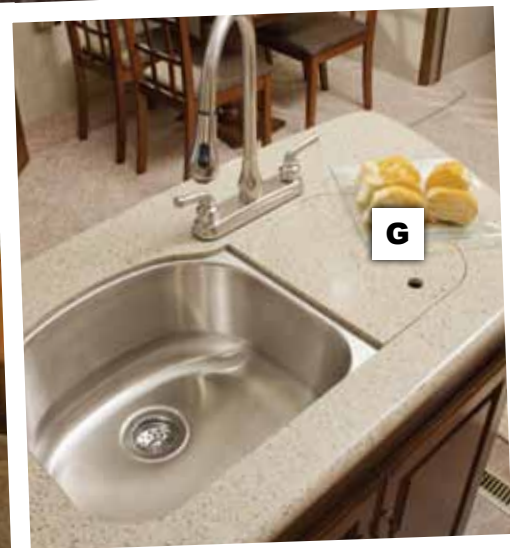
B

D

A

C





## LIFE-SIZE FIFTH WHEELS



### INTERIOR FEATURES

- A. 40" LCD HDTV
- B. Stainless Steel Sink
- C. Flooring with 2 Year Cold Crack Warranty and 7 Year Performance Warranty
- D. Flush Mount Sink with High Rise Faucet
- E. Huge 60" Shower (select models)
- F. King Size Pillowtop Mattress (select models)
- G. Solid Surface Countertops

### EXTERIOR FEATURES

- Fiberglass Front Cap with Max Turn Technology
- Power Adjustable Awning
- 50 AMP Service
- "Saddle" Style Pass-Thru Storage
- 16" Radial Tires
- 8 Lug Aluminum Wheels
- 10" Main Frame Rails
- Heated Storage Compartment



# CONSTRUCTION

## WALL CONSTRUCTION (R-9)

1. Gel-coated fiberglass exterior
2. 1/8" Luan wood backer
3. Hi-density block foam insulation
4. Radius window corner blocks
5. 2" Welded aluminum sidewall studs
6. High-gloss front fiberglass cap
7. Metal backing strips

## ROOF CONSTRUCTION (R-28)

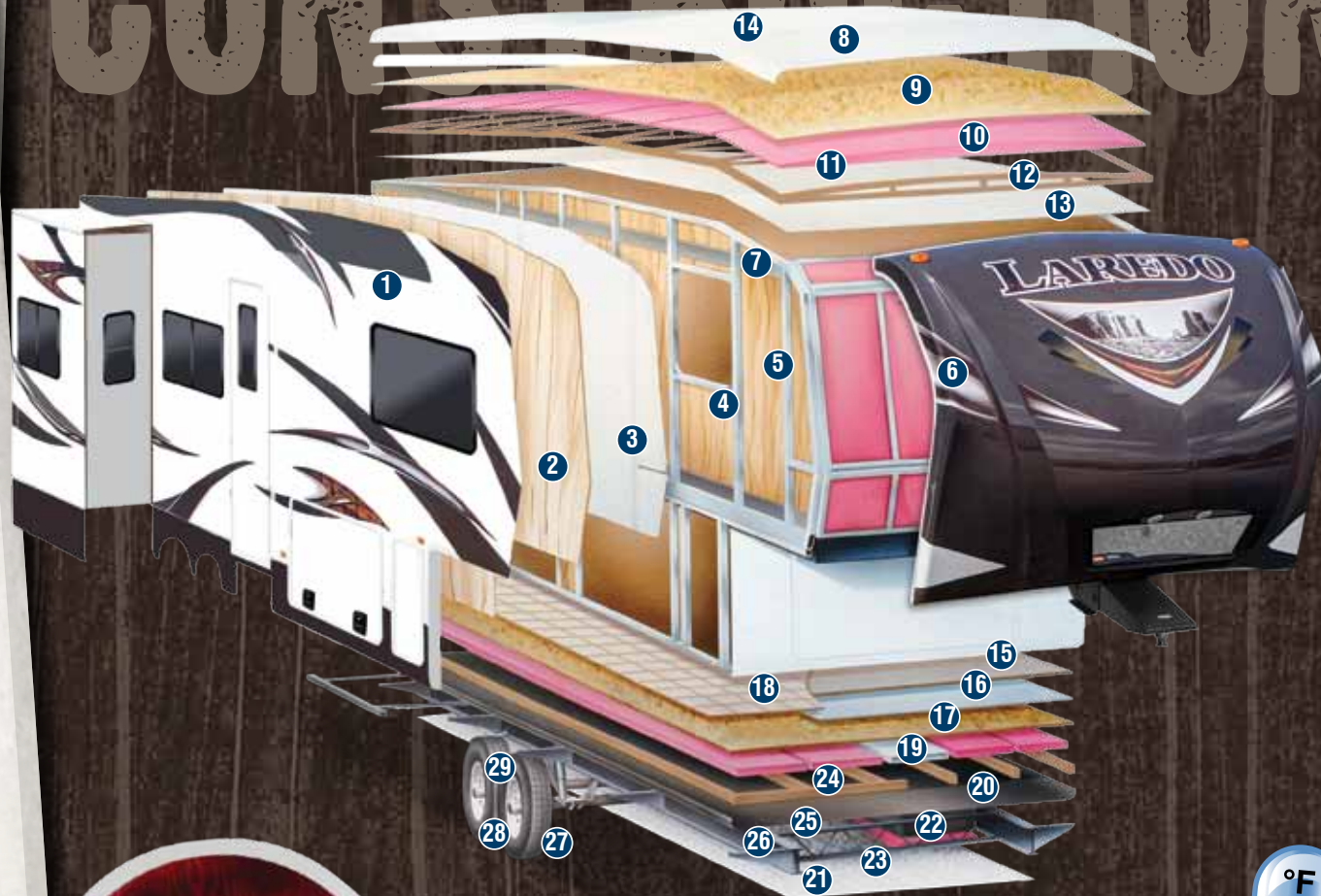
8. One-piece EPDM rubber roof with 12-year warranty
9. 3/8" Fully walkable roof decking
10. Fiberglass batten insulation - 2 layers
11. Heat reflective Astro foil insulation
12. 5" "Snow Load" roof trusses
13. Ceiling decking with vinyl protection
14. Vented attic

## FLOOR CONSTRUCTION (R-30)

15. Residential grade carpet with stain protection
16. Residential grade carpet padding
17. 5/8" Seamless wood floor decking
18. Residential grade linoleum
19. In-floor ducted heat
20. Darco wrap (main floor)
21. Astro foil bubble insulation
22. Fiberglass batten insulation - 2 layers
23. One-piece, fluted polypropylene fully enclosed sub-floor
24. 3" floor joists on 16" centers
25. Therma Shield 37 holding tank enclosure

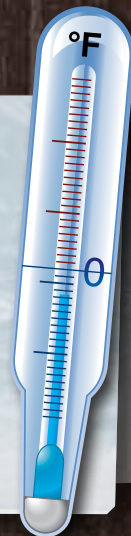
## TIRE & CHASSIS

26. 10" steel powder coated I-beam frame
27. 16" radial tires
28. EZ Lube axles
29. E-Z Flex Suspension

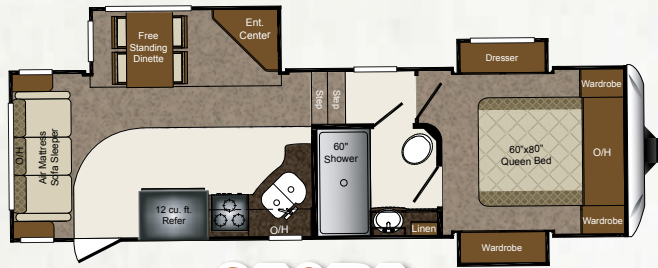


## EXPAND YOUR COMFORT ZONE

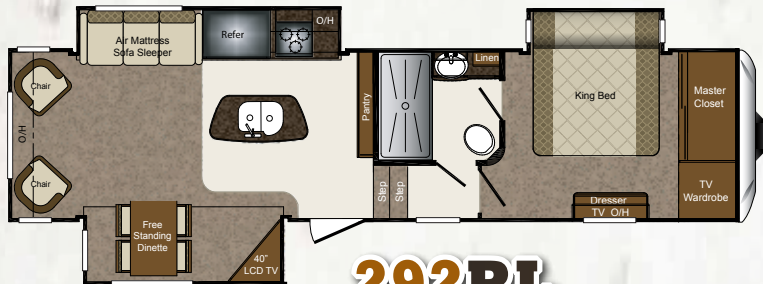
Laredo's exclusive Comfort Zone Climate System provides industry leading protection from extreme early and late season temperature variations. The 35,000 btu furnace, heated pass through storage area, and insulation values unmatched by our competition allow you to enjoy your Laredo a little longer each camping season.







**250RL**



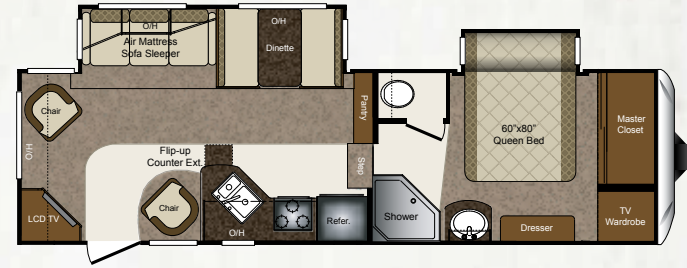
**292RL**



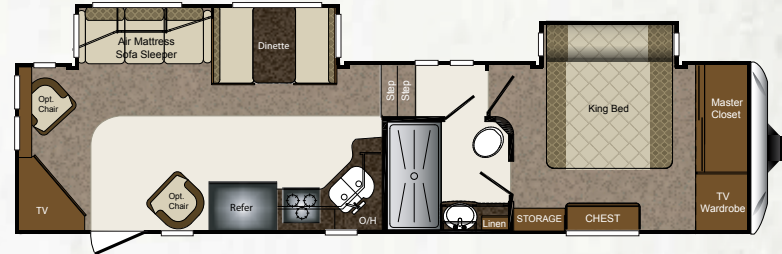
**321BH**



**335TG**



**266RL**



**300RL**



**329RE**

FIFTH WHEELS	250RL	266RL	292RL	300RL	321BH	329RE	335TG
SHIPPING WEIGHT	8435	8515	9970	TBD	10295	10815	10559
CARRYING CAPACITY	3065	2985	2530	TBD	2705	2185	2441
HITCH WEIGHT	1910	1900	2100	TBD	1980	1925	1935
EXTERIOR LENGTH	30' 3"	30' 5"	34' 4"	34' 11"	36'	37' 2"	37' 8"
EXTERIOR WIDTH	8'	8'	8'	8'	8'	8'	8'
EXT. HEIGHT - A/C TOP	12' 4"	12' 4"	12' 7"	12' 7"	12' 7"	12' 7"	12' 7"
FRESH WATER (GAL.)	55	55	55	55	55	55	55
WASTE WATER (GAL.)	40	40	40	40	75	40	40
GRAY WATER (GAL.)	40	40	72	40	75	75	110
LP CAPACITY (LBS.)	60	60	60	60	60	60	60



**LAREDO**  
By Keystone

# SUPER LITE FEATURES TRAVEL TRAILERS

Our heated and enclosed underbelly helps extend the camping season while also improving fuel mileage by reducing drag under the coach.



Aluminum alloy wheels offer light weight, durability, and look great traveling down the open road.



50 amp and wired/braced for 2nd A/C



The large single basin kitchen sink allows enough size and depth for washing pots & pans.



Residential 60 x 80 queen beds are a luxury not offered by most light weight travel trailers.



The high rise faucet allows larger items to fit into the sink, plus adds a modern look and a touch of elegance to the kitchen.



Huge 50" shower really makes you feel at home.



40" LCD HDTV that makes it easy to view from all angles



80" Wide u-shaped booth dinette



The vaulted ceiling adds 5" of interior height to the Laredo travel trailers.



Solid surface countertops with matching sink covers are paired with a faucet with pullout sprayer.



Residential queen beds (60"X80"), and flush floor upper decks are a luxury not offered by most other mid-profile fifth wheels.



40" LCD HDTV that makes it easy to view from all angles



# FIFTH WHEEL FEATURES



30" Wide entry door



No need to worry about running out of hot water with our 12 Gallon DSI hot water heater.



Huge 60" shower is a best in its class feature that really makes you feel at home.



Get 12 cu. ft. of cool food storage space without sacrificing all of the square footage in your kitchen.



6,000 lb. axles



50 AMP service, ready for second air conditioner



16" 8-lug aluminum alloy wheels, offer light weight strength, and a great look traveling down the highway.



Heated pass-thru storage with wet storage bin. Easy to access with slam latches on doors and about 100 cu. ft. of pass-through storage (N/A on Super Lites).



## BUY LOCALLY

### PURCHASING YOUR RV LOCALLY

It's up to you where you purchase your new Laredo, but may we suggest your local dealer? Not only does it help your local economy and provide jobs, but it will also give you an opportunity to develop a service relationship with someone that will come to know you and your coach. Congratulations on finding the best built, best equipped, best value in the industry, and happy travels!



HAZELNUT



OLIVE



NEW EARTH

## STANDARDARDS AND OPTIONS

### EXTERIOR

ThermaShield 37 holding tank enclosure			FW
Fully enclosed underbelly	TT	SF	FW
Heated, enclosed holding tanks & gate valves	TT	SF	FW
Oversized lighted pass-thru storage	TT	SF	FW
Roto-cast storage for wet or greasy items			FW
Exterior shower w/hot & cold water	TT	SF	FW
Folding entry assist handle	TT	SF	FW
Exterior marine grade speakers	TT	SF	FW
Rain gutters w/downspouts	TT	SF	FW
Security light	TT	SF	FW
Motion sensor light	TT		FW
Rear ladder			FW
Triple entrance steps	TT	SF	FW
Electric front jacks w/adjustable snap pins		SF	FW
Aerodynamic front cap with Hitch Assist Mirror & 2 LED lights w/Max Turn Technology		SF	FW
Outside 110V outlet & TV connection	TT	SF	FW

### TIRES & CHASSIS

Powder-coated I-beam frame	TT	SF	FW
Tube style bumper w/sewer hose storage	TT	SF	FW
Electric slideout system w/manual override	TT	SF	FW
Adjustable extended hitch pin		SF	FW
Radial tires	TT	SF	FW
EZ lube axles	TT	SF	FW
12" electric brakes			FW
Full-size spare tire	TT	SF	FW

TT = TRAVEL TRAILER

SF = SUPER LITE FIFTH WHEELS

FW = FIFTH WHEELS

### INTERIOR

#### Living Area

Dinette w/storage below		SF	FW
Extra wide 80" u-shaped dinette	TT		
6' 3" slide room height			FW
Ventilating windows on slideout end walls	TT	SF	FW
Overhead cabinets in slide rooms	TT	SF	FW
Residential grade carpet and padding	TT	SF	FW
Stain resistant fabrics	TT	SF	FW
Pleated shades	TT	SF	FW
Designer window treatments	TT	SF	FW
Raised panel mortise & tenon cabinet doors	TT	SF	FW
Entertainment center w/TV cabinet	TT	SF	FW

#### Kitchen

Residential-size overhead cabinets	TT	SF	FW
Dual sink covers	TT	SF	FW
Single basin sink	TT	SF	
60/40 deep-bowl sink			FW
High-rise faucet	TT	SF	FW
Linoleum floor with cold crack warranty	TT	SF	FW
Ball bearing full extension drawer guides	TT	SF	FW

#### Bathroom

Oversized shower w/glass door (select models)	TT	SF	FW
Tub surround w/shelves	TT	SF	FW
Foot pedal flush porcelain toilet	TT	SF	FW
Medicine cabinet	TT	SF	FW
Skylight over bath	TT	SF	FW
Power roof vent	TT	SF	FW

#### Bedroom

60" x 80" innerspring mattress	TT		FW
Bedspread w/matching headboard		SF	FW
Wardrobe storage	TT	SF	FW
TV hook-up	TT	SF	FW
Reading lights	TT	SF	FW

### APPLIANCES

12V AM/FM/CD/DVD home theater system w/ surround sound effect speakers	TT	SF	FW
Double door refrigerator w/wood inserts	TT	SF	FW
Microwave with carousel	TT	SF	FW
Range hood and light	TT	SF	FW
13,500 BTU ducted A/C	TT	SF	FW
High output range w/auto igniter	TT	SF	FW

### UTILITIES

2-30 lb. LP bottles w/auto changeover	TT	SF	FW
35,000 BTU high-output furnace w/auto ignition			FW
Water heater bypass kit	TT	SF	FW
Systems monitor panel	TT	SF	FW
Cable & satellite connections	TT	SF	FW

### SAFETY

Break away switch	TT	SF	FW
Tinted safety glass windows	TT	SF	FW
GFI receipts	TT	SF	FW
Carbon monoxide detector	TT	SF	FW
Smoke alarm	TT	SF	FW
Propane gas leak detector	TT	SF	FW
Fire extinguisher	TT	SF	FW

### LIFE-SIZE PACKAGE

12 cu ft refer (most floorplans)			FW
16" Radial Tires			FW
12 Gallon gas/electric water heater			FW
6,000 lb axles			FW
King Bed (292RL, 300RL)			FW
LED Ceiling Lights			FW
Oversize Stainless Steel Sink			FW
High-Arch pull down kitchen faucet			FW
60" Residential Shower (most floorplans)			FW
40" LCD TV (most floorplans)	TT	SF	FW
8 cu ft refer with hardwood face	TT	SF	FW
6'3" Slide out height	TT	SF	
80" Residential Queen Mattress	TT	SF	
50 Amp Service	TT	SF	
Arched Ceiling	TT	SF	
50" Residential Shower (most floorplans)	TT	SF	
Aluminum Wheels	TT	SF	
Radial Tires w/ Aluminum Wheels	TT	SF	

\*Mandatory Package

**LAREDO**  
By Keystone

WWW.KEYSTONE-LAREDO.COM

Member  
**RVIA**  
RECREATION VEHICLE  
INDUSTRY ASSOCIATION

Go RVing  
Life's A Trip

YOUR LOCAL DEALER:



www.keystonerv.com

2642 Hackberry Drive | PO BOX 2000  
Goshen, Indiana 46527-2000  
(574) 535-2100



Get the free app at  
<http://gettag.mobi>  
and scan this tag.

SEPTEMBER 2012

Product information is as accurate as possible at the date of publication of this brochure. Features, floor plans, and specifications are subject to change without notice. Please also consult Keystone's web site at [keystonerv.com](http://keystonerv.com) for more current product information and specifications. Tow Vehicle Disclaimer. CAUTION: Owners of Keystone recreational vehicles are solely responsible for the selection and proper use of tow vehicles. All customers should consult with a motor vehicle manufacturer or their dealer concerning the purchase and use of suitable tow vehicles for Keystone products. Keystone disclaims any liability or damages suffered as a result of the selection, operation, use or misuse of a tow vehicle. KEYSTONE'S LIMITED WARRANTY DOES NOT COVER DAMAGE TO THE RECREATIONAL VEHICLE OR THE TOW VEHICLE AS A RESULT OF THE SELECTION, OPERATION, USE OR MISUSE OF THE TOW VEHICLE. 9/2012