

WINNEBAGO MINNIE WINNIE... '74
we build confidence



WINNEBAGO
Winnebago Industries, Inc.

MINNIE WINNIE: The go-anywhere mini motor home.

Minnie Winnie is your fun-in-the-sun and around-the-town machine all rolled into one. You get the easy drivability of a car with automatic transmission, power brakes and steering, and a big 360 cubic-inch V-8 as standard equipment.

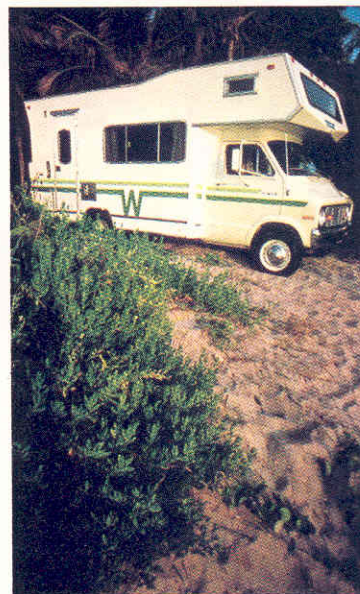
When the Minnie Winnie isn't running around town, it takes you and the whole crew off to faraway places or on short weekend jaunts, surrounded by all the comforts of home—including a bath, kitchen and lots of sleeping space.

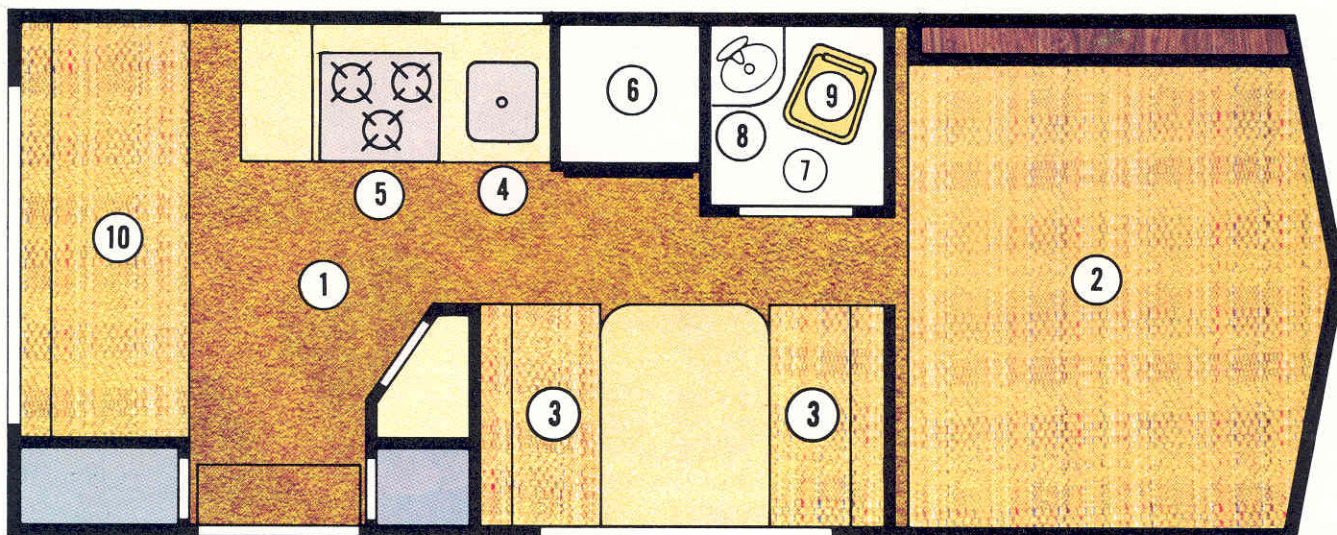
Minnie Winnie also surrounds you with a durable protective shell, our exclusive

Thermo-Panel®* construction. It features an outer layer of rustproof aluminum and an inner wall of tough paneling bonded to a thick core of solid insulating material. This is the same construction used in all Winnebago motor homes and travel trailers, and proven in over a billion owner-driven miles.

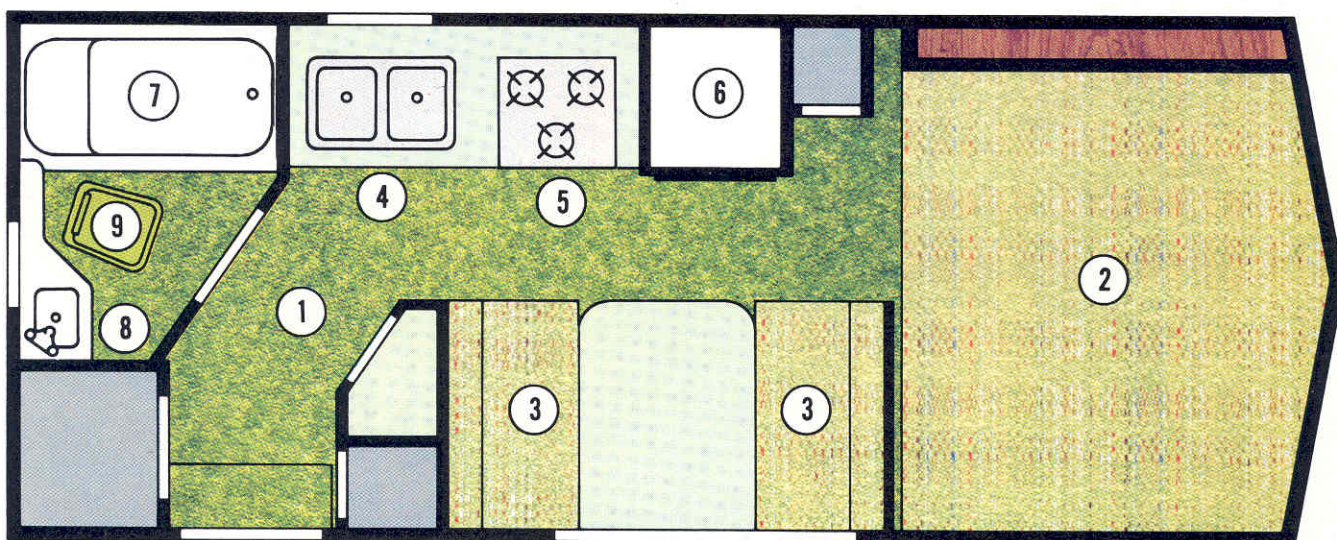
And this year we've built in additional steel for even greater strength and durability. So wherever you ask it to go, you know your Minnie Winnie can take it. That's Winnebago Confidence.

*"Thermo-Panel" is a registered trademark of Winnebago Industries, Inc.





MINNIE WINNIE RG



MINNIE WINNIE RB

The little MINNIE WINNIE is big on livability

Choose from two popular floor plans, both giving fully self-contained living as standard equipment. Complete kitchens featuring deluxe 3-burner stove with automatic oven, 4 cubic-foot gas/electric refrigerator, 30 gallon water system and quick-recovery water heater. And complete baths with built-in lavatory, marine-type toilet and phone head shower.

Our RG (rear gauchero) plan is long on living and sleeping space. You have both the gauchero and dinette which convert to beds, plus the big overhead front bed.

RB stands for rear bath. And what a bath our Minnie Winnie RB has! Complete with a luxurious bathtub/shower combination, lavatory and

marine-type toilet. The dinette converts to a bed and you can order a twin bunk to pick up even more sleeping space.

Both of these Minnie Winnie plans give you a long list of standard equipment (see inside). Compare. And stop to consider that you're getting Winnebago's proven reliability, nationwide service, and complete warranty.

You're getting Winnebago Confidence.

GUIDE TO MINNIE WINNIE FLOOR PLANS:

(1) Mini shag carpet (2) Bed over driver's compartment (3) Dinette (4) Stainless steel sink (5) Stove and oven (6) Refrigerator (7) Shower or tub and shower combination (8) Lavatory (9) Toilet (10) Gauchero

SPECIFICATIONS: Length: 19'9" / Width: 7'10" / Exterior height: 9'10" / Interior height: 6'6" / Curbside wet weight: 7,210 lbs. / Dodge MBH-300 chassis / Wheel base: 127" / 360 cubic-inch V-8 engine / Automatic transmission / Power steering / Power brakes / Electronic ignition / Tires: 8.00 x 16.5D, 8-ply front, 8.00 x 16.5C, 6 ply rear duals / 60 Amp alternator / 70 Amp-hour battery / Sleeping capacity: (RG) 6; (RB) 4 standard, 5 optional

The Pines







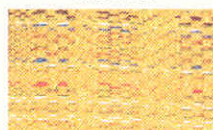
Choose from 3 interior color schemes

The Minnie Winnie interiors are something you can be truly proud to own. Shown, from right to left are: Canyon Gold, Glade Green, and Desert Sand. Interiors so striking, some people flip a coin to make their choice.

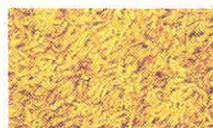
And you should see how they rhyme with our wormy-pecan vinylface paneling accented with smart brass handles and drawer pulls. At Winnebago, we make our own interiors. Including seats, cushions, mattresses and curtains. Choose confidently knowing that you'll be getting the finest of fabrics *and* workmanship.



Canyon Gold Interior



Fabric



Carpet



Drapes



Counter Top



Kitchen Wall

Glade Green Interior



Fabric



Carpet



Drapes



Counter Top

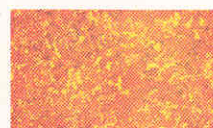


Kitchen Wall

Desert Sand Interior



Fabric



Carpet



Drapes



Counter Top



Kitchen Wall

Surface Accents
All Interiors



Walls



Bathroom Wall



MINNIE WINNIE STANDARD EQUIPMENT

Safety Features:

- ☐ Clearance lights comply with Federal and SAE regulations
- ☐ Backup lights, parking lights, turn signals and safety flashers
- ☐ Tinted windows and windshield
- ☐ Door lock complies with National Highway Safety Bureau standard number 206
- ☐ Quick-release rear window
- ☐ Fire extinguisher

Automotive Features:

- ☐ 360 cubic-inch Dodge V-8 engine
- ☐ Automatic transmission
- ☐ Power steering
- ☐ Power brakes
- ☐ 60 Amp alternator
- ☐ Twin 70 Amp-hour batteries
- ☐ 25 gallon gas tank
- ☐ Spare tire cover

Driver's Compartment:

- ☐ Armrests for driver and front passenger
- ☐ Ash tray for driver's compartment
- ☐ Glove box door and light
- ☐ Sunvisors
- ☐ Deluxe high-output automotive heater
- ☐ Interior rearview mirror
- ☐ Windshield washers and electric wipers
- ☐ Twin outside rear view mirrors
- ☐ Vinyl blackout curtain

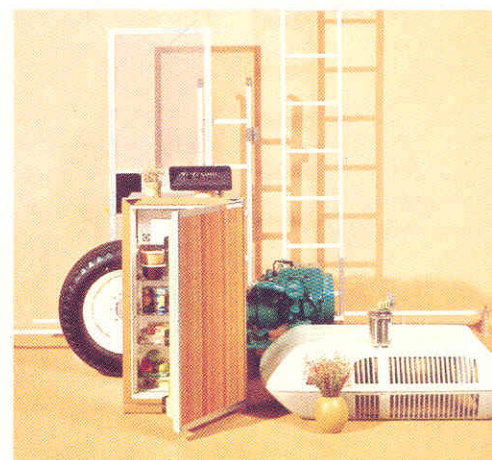
Kitchen Features:

- ☐ Stainless steel galley sink
- ☐ Deluxe 3-burner LP gas range with oven
- ☐ 4 cubic-foot gas/electric refrigerator
- ☐ Galley extension (RG only)

Livability Features:

- ☐ 16,000 BTU forced air furnace
- ☐ Carpeting in the living area
- ☐ 30 gallon water system
- ☐ 6 gallon water heater
- ☐ Built-in lavatory in the bath
- ☐ Bathtub/shower combination (RB only)
- ☐ Shower curtain
- ☐ Flexible phone-head shower
- ☐ Marine toilet
- ☐ 21 gallon holding tank
- ☐ Electric 12-volt converter
- ☐ 12-volt interior lights
- ☐ Roomy wardrobe
- ☐ Dinette converts into 74" x 39" bed
- ☐ Front overhead bed (size: 84" x 58")
- ☐ Twin 20 lb. LP gas bottles
- ☐ Outside luggage compartment
- ☐ 25' 110-volt power cord entrance
- ☐ Fire extinguisher
- ☐ Radius cornered windows

MINNIE WINNIE OPTIONAL EQUIPMENT



Exterior Options:

- ☐ Voltage converter with battery charger
- ☐ Automatic LP regulator
- ☐ Screen door
- ☐ TV antenna
- ☐ Ladder and luggage rack
- ☐ Undercoating
- ☐ Storm windows
- ☐ Trailer hitch
- ☐ 2500-watt power plant and hourmeter
- ☐ Spare tire
- ☐ 10,000 BTU roof air conditioner

Interior Options:

- ☐ Holding/water tank gauges
- ☐ 6 cubic-foot gas/electric refrigerator
- ☐ AM radio
- ☐ 23,000 BTU forced-air furnace
- ☐ 28,000 BTU forced-air furnace
- ☐ Bath and galley package (RG only)
- ☐ Power vent package (RB only)
- ☐ Power roof vent in bath
- ☐ Power stove hood vent
- ☐ Twin bunk right side (RB only)
- ☐ Bunk ladder
- ☐ Water conditioner
- ☐ Cruise control
- ☐ Automotive air

You can have confidence in our coast to coast service and complete warranty.

Winnebago service wasn't born yesterday. We have an established service network of over 300 authorized dealers from coast to coast and in Canada and Alaska. To these Winnebago dealers, motor homing isn't a sideline. It's a full-time job and they're in it to stay. That's why you can count on factory-trained service men who are as capable at tackling a problem as they are performing normal maintenance.

Winnebago is very proud of its network of sales and service dealers... the largest motor home service organization in the nation. Quite frankly, we feel that a top-notch service organization geared to your needs is as important as a quality product in assuring us of a long list of satisfied customers.

Experienced service, proven dependability, and a complete warranty. You get all this from Winnebago, America's largest selling manufacturer of motor homes. And you get one thing more: Winnebago Confidence.

WINNEBAGO®

We build confidence

Winnebago Industries, Inc.
Forest City, Iowa 50436

Cover photo taken at Jensen Beach, Florida

WINNEBAGO WARRANTY

Winnebago Industries, Inc., warrants each new Winnebago Motor Home (excluding chassis, 110 volt power plant, and tires), Travel Trailer (excluding tires) or Camper Coach to the original purchaser as follows:

- For the life time of the unit—Winnebago Industries' exclusive "Thermo-Panel" Construction is warranted against defects in lamination for the lifetime of the Winnebago Motor Home Body, Travel Trailer, or Camper Coach.
- For the period of one year from the date of purchase—air compressor, air conditioner (auto), air conditioner (roof), antenna, axles (TT), auxiliary battery (MH), battery (TT), brake assembly (TT), converter, speed control, demand pump, furnace, hitch (TT), LP gas bottle(s), power range hood, pre-finished panelling, range, radio, refrigerator, sink, stereo, vacuum cleaner, gauges, water conditioner, toilet, and water heater.
- For the period of 90 days from the date of purchase—carpet, cushion foam, compartment doors, drainage hose, driver and passenger seats, electrical systems, cushion fabric, fire extinguisher, plastic refrigerator interior door, faucets, light fixtures, plumbing system, switches, shower door, shower head, vinyl, jack (MH), sealants, LP gas valves, and windows.

Any part of the Winnebago Motor Home, Travel Trailer or Camper Coach subject to this warranty which is found to be defective in material or workmanship, will be repaired or replaced, at Winnebago Industries' option, by the selling dealer without charge for parts or labor. If the selling dealer has ceased to do business as an authorized Winnebago dealer or the owner is traveling or has moved to a different locality and cannot return to the selling dealer, the owner may obtain warranty repairs or replacement at any authorized Winnebago Dealership.

Winnebago Industries, Inc., cannot, however, and does not accept any responsibility in connection with any of its Motor Homes, Travel Trailers, or Camper Coaches when they have been altered outside of its own factory. If the purchaser shall use or allow to be used in the Motor Home, Travel Trailer or Camper Coach, equipment and/or parts not made or supplied by Winnebago Industries, Inc., then this warranty shall become void, if failure is a result of improper installation or adaption.

Winnebago Industries, Inc., does not undertake responsibility to any purchaser of its products for any undertaking, representation or warranty made by dealers selling its products beyond those herein expressed.

This express warranty is the only warranty applicable to the Winnebago Motor Home, Travel Trailer, or Camper Coach and is expressly in lieu of any warranties otherwise implied by law (including but not limited to implied warranties of merchantability or fitness for any particular purpose). The remedies available under this express warranty shall be the only remedies available to the purchaser-user with respect to defects in material or workmanship.

Without regard to the alleged defect, Winnebago Industries, Inc., under any circumstances, does not assume any responsibility for loss of time, inconvenience or other consequential damage including, but not limited to, expense for gasoline, telephone, travel, lodging, loss or damage to personal property or loss of revenue.

Winnebago Industries, Inc., reserves the right to make changes in design and changes or improvements upon its products without imposing any obligation upon itself to install the same upon its products theretofore manufactured.

It is the obligation of each Winnebago dealer to provide full service for owners of Winnebago Motor Homes, including Winnebago installed and/or approved components as to all aspects of said products. If the dealer is unable to provide said service at his place of business, the dealer will, at his own expense, secure said service for you from other firms authorized to service the various components in your Winnebago Motor Home.

All descriptive and pictorial representations of the products in this brochure are believed to be current at the time of publication. However, due to continued product improvement and changes in suppliers, design and production, accuracy cannot be guaranteed.

Therefore, equipment, colors, material specifications, and model availability are subject to change without notice. Please contact your authorized Winnebago dealer for current model specifications.

