

© 1911
© 1911

Introducing Elán dan, exquisite new expression of motor
home elegance from Winnebago.

Elán dan is beauty. Grace. And twenty-nine feet of the finest
luxury features you will see on any motor home today.

Artistically crafted in a colonial provincial theme.

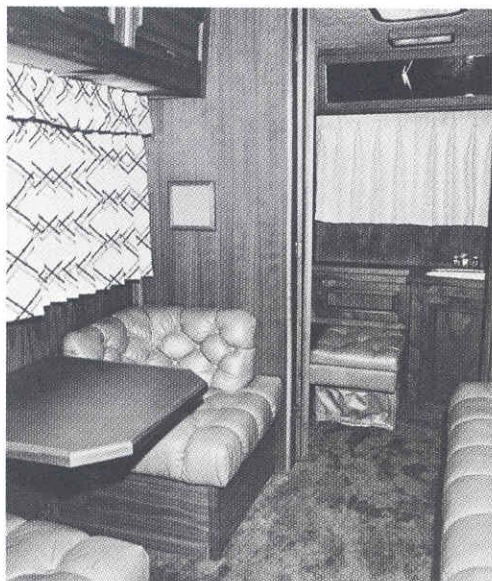
Rich features like hand rubbed oil finish walnut interiors.

Hand stitched leathers. Hand embroidered crewel draperies.

Sculptured carpeting. Counters adorned with gleaming copper
insets. Indirect lighting. Simulated wood burl trim and
chrome wheels for a distinctive exterior look.

And luxury convenience features like fore and aft lounges,
a microwave oven, two eight-track stereo tape systems with
four speakers to each system, a color television set, a
blender and ice crusher.

Of course Elán dan comes with the necessities for luxury
living. You would expect that of a motor home of this mark.
And Elán dan is available by custom order. You would expect
that too.



SPECIFICATIONS: Length: 29' 1" / Width: 7' 7.5" /
 Exterior height: 10' 6" / Interior height: 6' 5½" /
 Gross Vehicle Weight Rating: 14,500 lbs. / Estimated
 curbside wet weight: 12,300 lbs. / Wheelbase: 178" /
 440 cubic inch engine / Fuel tank capacity: 36 gal.
 main tank, 29 gal. auxiliary tank / Dual holding
 tank capacity: 84 gal. / Fresh water capacity: 71
 gal.

WINNEBAGO®

Winnebago Industries, Inc. • P.O. Box 152, Forest City, Iowa 50436

Due to continued product improvement and changes in suppliers, design and production, accuracy cannot be guaranteed in descriptive and pictorial representation of the products in this brochure. While they are believed to be current at the time of publication, equipment, colors, material specifications, and model availability are subject to change without notice. Please contact your authorized Winnebago dealer for current model specifications.