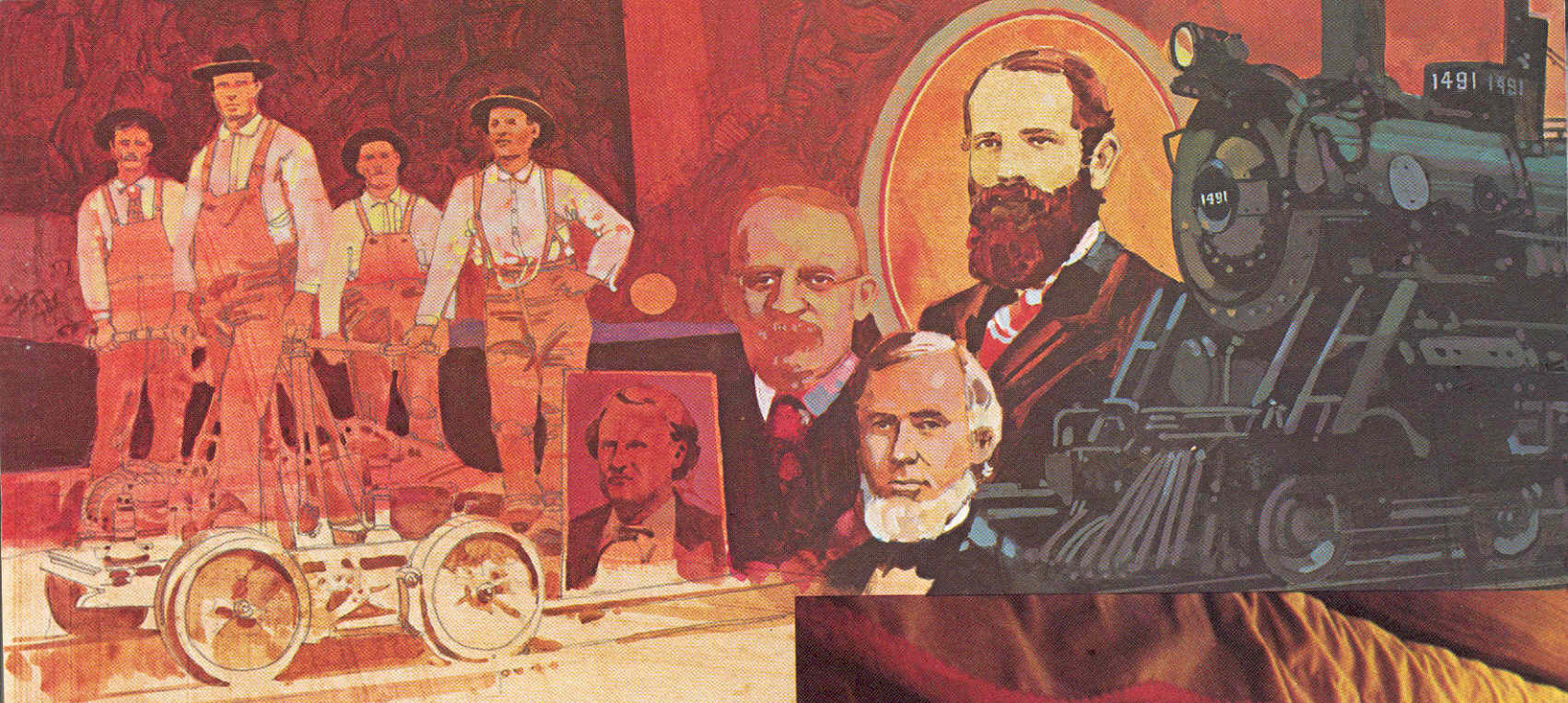


the age of railroading elegance takes to the road

SunflyerTM limited



T. BOONWALTER



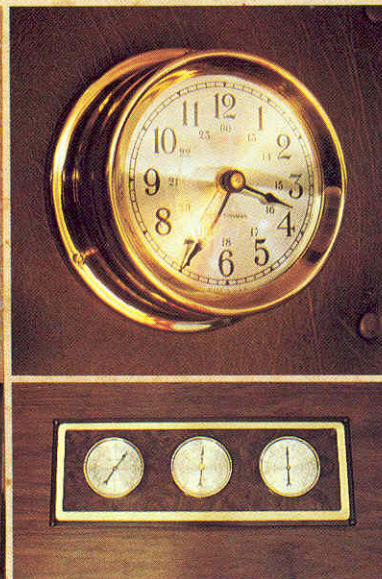
**Great places, the magic time.
Roll with the Sunflyer.**

It happens to all of us now and then. The weather is unkind to the ski slopes or the golf course. The trip to work has become so routine that sometimes you often don't remember driving there. The days have grown blah and the nights ho-hum. Suddenly there's an irresistible call to the timeless mountains, the whispering woods or the gentling sea shore. As urgent as it is to get away, it isn't enough just to go. You've worked hard and you owe yourself a special escape.

It was for you the Sunflyer was created. It grew out of one of the most lavish styles America has known, the personal railroad cars of the financial magnates of an earlier era, where rich plushes and velvets and brocades were used with a lavish hand. When the magic times come, roll to the great places in the unrestrained elegance of the Sunflyer

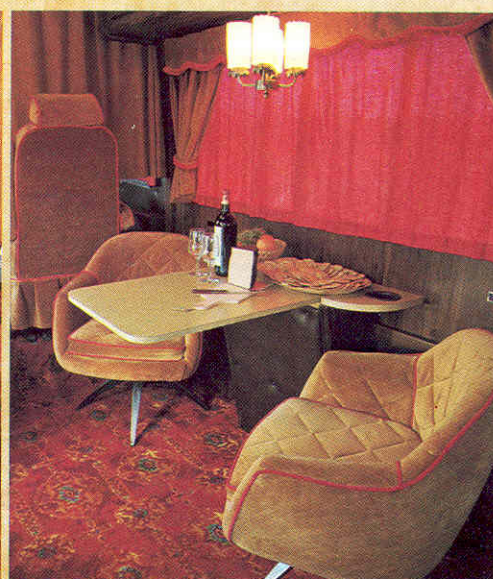






Victorian
touches and
contemporary
convenience. That's
Sunflyer.

In the first days of railroading, everything depended on the mechanics and the laborers. Next came the financiers who combined the countless little lines into empires. It became a common practice for the millionaires of that time to travel in their own private rail cars. Predictably, these were richly decorated, in keeping with their owners' wealth. It is from that time and opulent style that the Sunflyer has drawn its decor. Yet with all these graceful touches of lush Victorian interiors, there are the best of modern conveniences. The two make a happy blend, contributing to a style of travel uniquely its own.



The color scheme is predominantly in tones of Golden Spike, with accents of Signal Red or Mountain Pass Blue, and warm hickory paneling.

The kitchen is an achievement in compact planning. Offsetting the sleek efficiency of the double stainless steel sink, the range and hood is the lush brocaded pattern of the washable wall covering. A power center for the blender and ice crusher is built into the counter top. The built-in refrigerator provides plenty of storage space for foods and beverages.

In the engineer's cab are two very comfortable swivel chairs and all the controls.

There are special touches throughout the Sunflyer, such as the railroad-style brass-plated wall clock and the weather center with barometer, hygrometer and thermometer.

The front lounge features two swivel chairs in quilted velvet and a fold-away table.

The second lounge has two storing tables and a large couch, also in quilted Golden Spike velvet, which easily converts to a bed. With the second convertible couch, the Sunflyer sleeps four.

The bathroom, complete with tub and shower, would have been the envy of the railroad barons.

There are even more great features in the Sunflyer; an authentic-looking engine bell, lighted entry assist handle, AM/FM Stereo radio with tape, TV antenna, luggage rack and access ladder, and ceiling finished in acoustical tile.

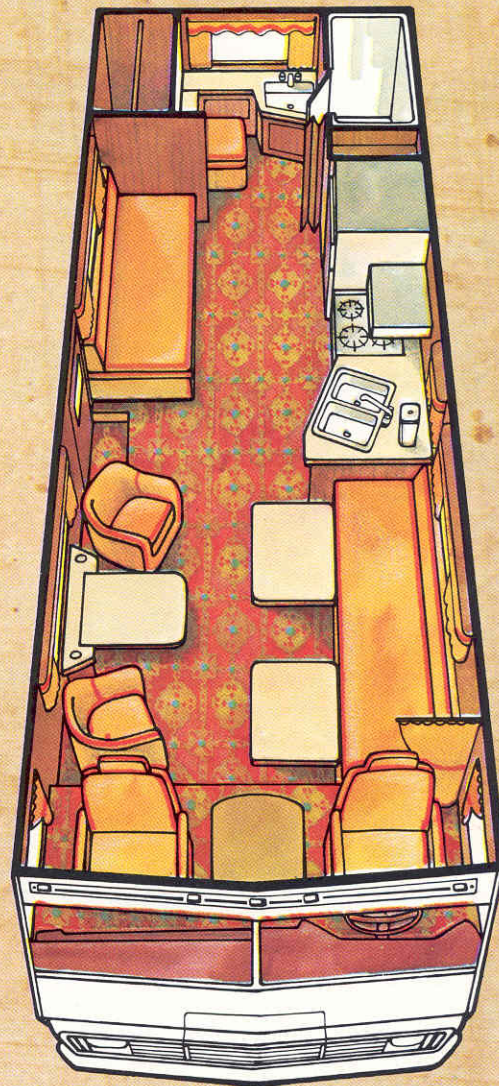
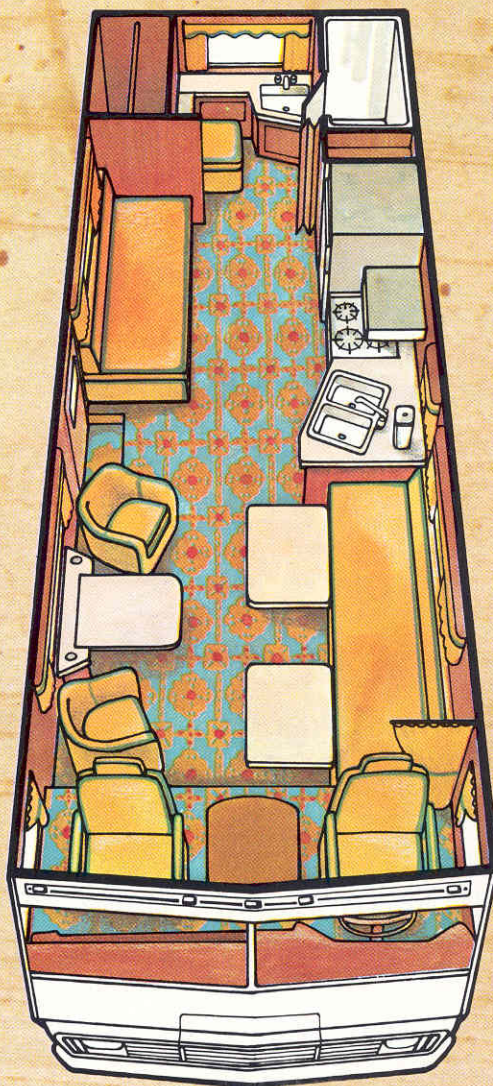
Outside, the flair of the Sunflyer is very much in evidence. Atop the cab are twin air horns with enough carrying power to clear any crossing, and a remote control swivel spotlight.

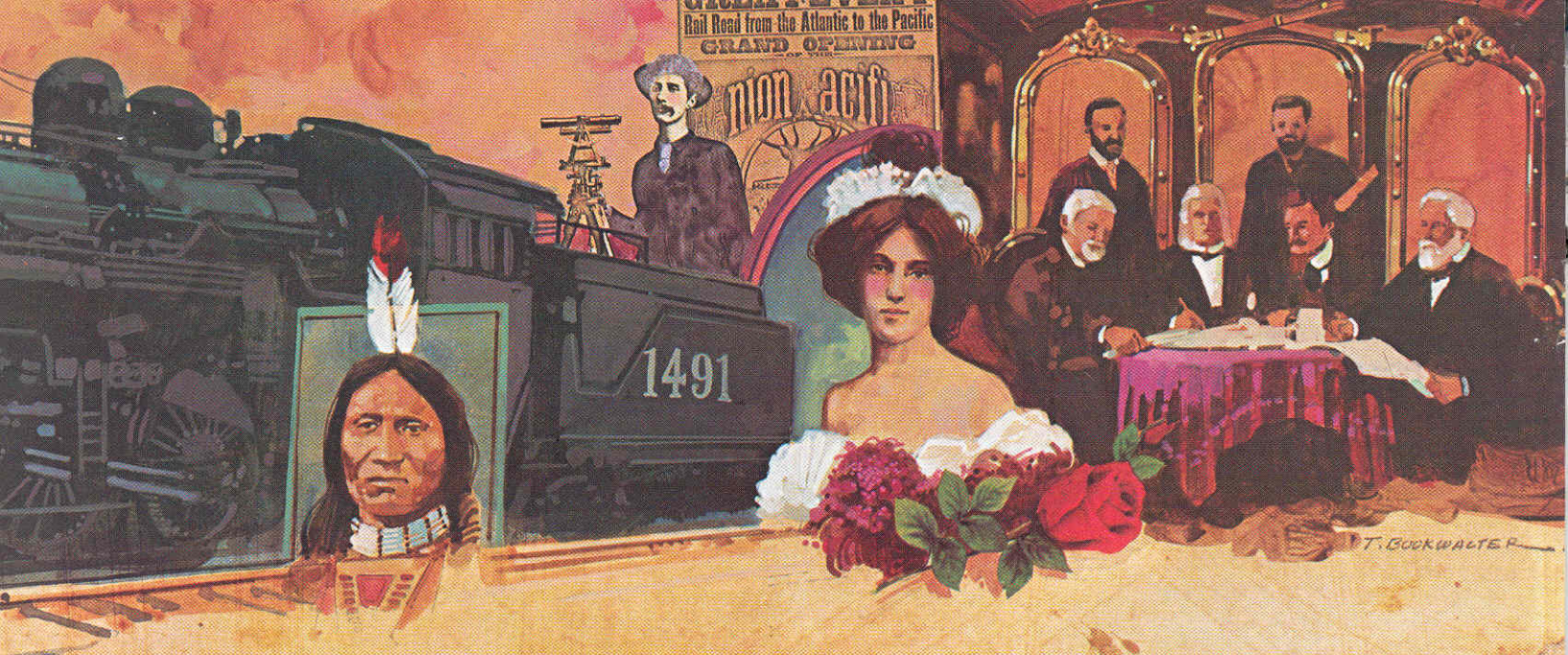
When you pass them on the road, they're going to know who went by. The brightly colored molded spare tire cover makes sure of that.



lanned for the practical gypsy.

You've seen the elegant features. Now see how Sunflyer puts them all together to create a masterpiece of luxurious livability. Entry, through a door with delicately etched glass panel, is between the front and rear lounges. At the very front, of course, is the engineer's cab. Directly behind that is the large lounge, which has a long sofa, two easy chairs and three store-away tables, a perfect conversation and dining center. Next in line you have the compact, yet complete, kitchen, a second convertible couch and at the rear, the bathroom. No, storage space hasn't been overlooked. There are kitchen cabinets, bathroom vanity and a large wall closet. There's even an efficient air conditioning system, forced air furnace, cruise control, fire extinguisher, tinted safety glass windows and many more happy surprises. All the Sunflyer really lacks is you.





eatures to accommodate the most selective traveler.

Chassis

- ☐ Chevrolet P30 series chassis
- ☐ Rugged steel channel frame rails
- ☐ 158.5" wheelbase ☐ Dual rear wheels
- ☐ Heavy duty rated rear leaf springs ☐ Front coil springs

Automotive

- ☐ 454 cubic-inch Chevrolet engine
- ☐ 3-speed turbo-hydraulic transmission ☐ Cruise control
- ☐ Power steering ☐ RV Thumpless tires ☐ Aluminized exhaust system
- ☐ Jack and tools ☐ Spare tire carrier with molded cover ☐ Trailer hitch
- ☐ Rear mud flaps ☐ Chrome bumpers ☐ 80 amp. battery ☐ 2 auxiliary 105 amp. deep cycle batteries
- ☐ Sunvisors ☐ Automotive air conditioner ☐ Auxiliary gas tank (total combined capacity of 75 gals)
- ☐ Dual air horns ☐ Wheel covers

Safety

- ☐ Fire extinguisher (2 B.C.)
- ☐ Tinted windows ☐ L.P. leak detector
- ☐ Inside and outside rear view mirrors ☐ Outside assist handle with light
- ☐ Remote control spotlight ☐ Safety/Floor courtesy lighting

Construction

- ☐ Thermo-steel[®] construction incorporating hat-channel steel ensures maximum strength and safety, plus excellent insulation and meets federal proposed standards for urban bus transit.

Convenience and comfort

- ☐ Black out curtain ☐ Ash trays and cigarette lighter ☐ 83 lb. permanent mount LP tank with gauge
- ☐ Screen Door ☐ AM-FM Stereo Radio with Tape and Clock
- ☐ 4,000 watt generator ☐ 13,500 BTU roof air conditioner ☐ Weather Center
- ☐ 28,000 BTU forced air furnace ☐ Outside temperature gauge
- ☐ 5,000 BTU roof air heat element ☐ Holding tanks and water gauge
- ☐ 6 gallon Motor Aid water heater ☐ 110/12 volt electrical system
- ☐ Exterior luggage compartment ☐ TV antenna ☐ Ground fault interrupter
- ☐ Demand water system ☐ 60 gallon fresh water storage
- ☐ Marine toilet ☐ Dual holding tanks ☐ Sewer hose and storage
- ☐ Shower with flexible head ☐ Luggage rack and access ladder
- ☐ Armrests and headrests ☐ Beverage tray ☐ Medicine cabinet w/mirror
- ☐ Vacuum cleaner ☐ Converter/battery charger ☐ Laundry bag in lavatory cabinet

Kitchen and Dinette

- ☐ 4 burner range with fashionable glass faced oven and power hood
- ☐ 8 cu. ft. electric refrigerator
- ☐ Blender/Ice crusher ☐ Double sink ☐ Sink cover

Sleeping

Both front and rear lounges covert to two person sleeping areas. Curtains for front windshield. Also an aisle privacy curtain to separate the front and rear sleeping areas.



Triple the average motor home protection.

The 1977 Itasca Owner Protection Plan is already an industry phenomenon. It'll cover you for no less than three years or 36,000 miles. And not just on a few isolated parts, either. We'll cover the inside, the outside, the underside—anything operational, except normal replacement items like spark plugs and oil filters.

In fact, if you keep your 1977 Itasca serviced regularly, we'll assure you that for three years or 36,000 miles, no repair job resulting from a mechanical malfunction will ever cost you more than \$25. And for the first year or 12,000 miles—Itasca's Limited Warranty period—it won't even cost you a penny.

Due to continued product improvement and changes in suppliers, design and production, accuracy cannot be guaranteed in descriptive and pictorial representation of the products in this brochure. While they are believed to be current at the time of publication, equipment, colors, material specifications, and model availability are subject to change without notice. Please contact your authorized Itasca dealer for current model specifications.

Itasca

HOME OF THE 3-YEAR/36,000-MILE OWNER PROTECTION PLAN

A Division of Winnebago Industries, Inc.

A DIVISION OF WINNEBAGO INDUSTRIES, INC.
P.O. Box 555/Forest City, Iowa 50436/Telephone (515) 582-2636

Printed in U.S.A. Form No. 112-SF-377-50-IG



Copyright 1977