

We've
got a plan
for you.



WINNEBAGO®

Brave and Minnie Winnie

The spice of recreational vehicle life is the refreshing variety in exploring the outdoors. This year, Winnebago's Brave and Minnie Winnie models bring more of that variety indoors to offer you an exciting new selection of affordable motor homes.

Brave and Minnie Winnie...the names are ever enduring. Still the ones owners trust for maximum return on their RV investment.

This year's Brave sports a streamlined new exterior and two big, spacious floor plans in 23-foot and 26-foot lengths. Yet they're priced like many minis, these full-size motor homes. So you can imagine what a bargain our minis are, the Minnie Winnie 20RG and 23RB.

Because of Winnebago's experience, these new models have the features owners most want to have. And because they're built by the nation's leading builder of quality motor homes, that means more features than most.

Brave this year offers two basic floor plans. The 23RG has a convertible couch in the back, the bigger 26RT has twin beds there instead. Minnie Winnie has a 20-footer with a convertible couch in the back, or a 23-foot motor home with a big bath in the rear.

Make a quick trip to your dealer, however, and more nice selections evolve. And if he doesn't have them available, he can help you order what you want.

What we're talking about is detailed on the next page. The inside story on Brave and Minnie Winnie this year. You'll notice basic plans, sure, but you'll see that they're by no means static. Considering how they can be equipped, with what and where. Either right

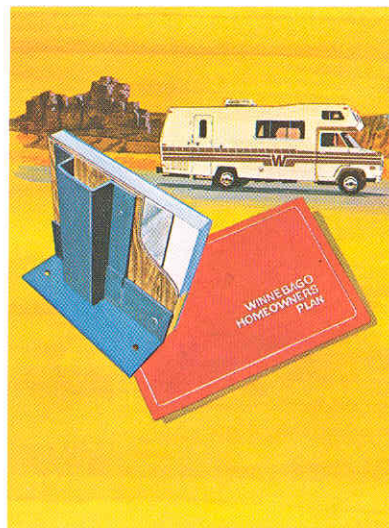
from your dealer—or ordered with his help—there are a number of interesting ways Brave or Minnie Winnie can fit a plan to yours.

An affordable line to match your budget; an exciting line offering new variety too. That's one chapter of the best-selling story on Brave and Minnie Winnie this year. But, like any best-seller, there is depth to the overall saga.

At Winnebago, expert engineering and construction are backed by a continuing safety program, including crash tests, to prove the strength of our famous Thermo-Steel® construction. This plus higher resale value, service dealers across the country, and a strong warranty help make up our comprehensive homeowner's plan (your dealer has complete details). These are just a few reasons why Winnebago owners sleep better. And we haven't even mentioned our comfortable beds.

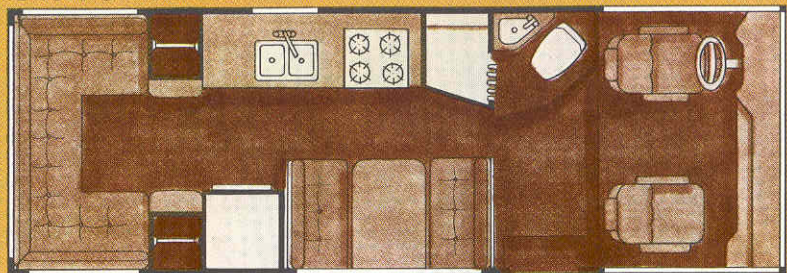
Compare all that's standard on a Winnebago before you make your plan.

Only Winnebago offers this comprehensive package of protection that follows your motor home wherever you travel. A security network of over 300 service centers across the country... a customer relations department to answer your questions... a sound engineering and safety program... higher resale value... it's all included in the Plan. And certainly the warranty is another vital part. We believe Winnebago's limited warranty is one of the best. And it's honored coast-to-coast.

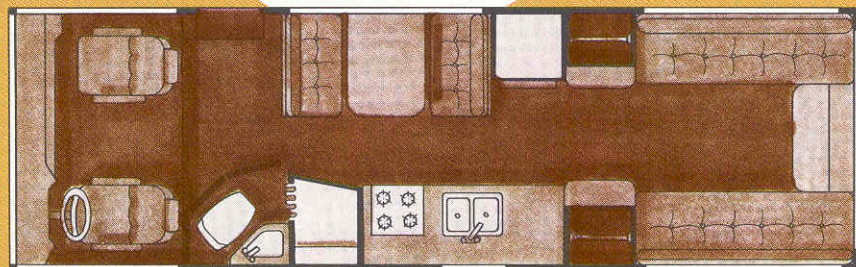
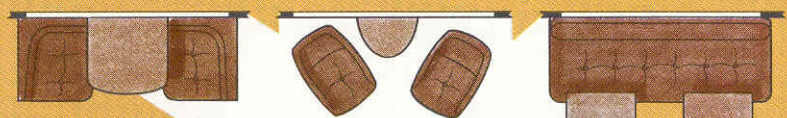


Beautiful interiors have always been an important part of the Winnebago story. This year's coordinated groupings for Brave and Minnie Winnie are a decorator's delight. Gorgeous shades of rust, green-gold, and blue-camel tastefully complemented with buff ceilings, butcher block countertops, ivory brick backsplashes, sculptured carpeting and easy-to-clean vinyl clad paneling in a rich hickory design. Exterior color striping coordinates with the interior decor of your choice...and all fabrics, materials and components are selected by expert interior designers from only the best.

Brave 23RG



Brave 26RT



All Brave models

Lounge chairs and table to replace dinette. Convertible couch with two tables to replace dinette.

Brave 23RG

Rear pedestal table.

Brave 26RT

Rear horseshoe lounge with pedestal table to replace rear twin beds.

Side couch RH with two swivel chairs and fold-out table LH to replace rear twin beds.

Side couch RH with vanity and swivel chair LH to replace rear twin beds.

Side couch RH with two lounge chairs and table to replace rear twin beds.

Two swivel chairs with folding table to replace dinette.

Minnie Winnie 20RG

Dinette standard.

Convertible couch with two tables to replace dinette.

Rear pedestal table.

Lounge chairs and table to replace dinette.

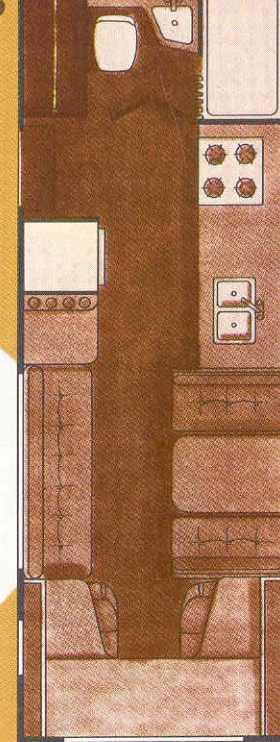
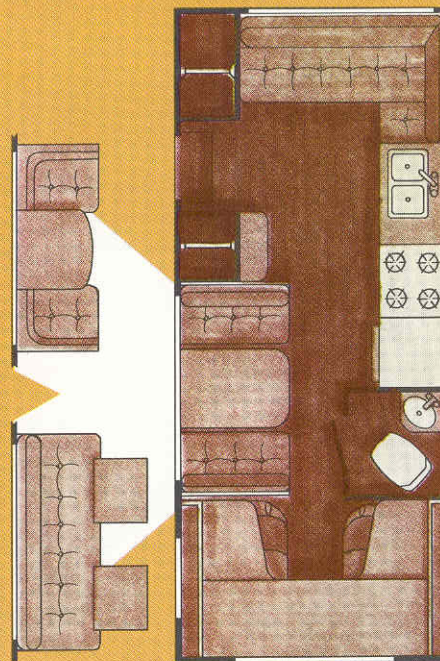
Minnie Winnie 23RB

Convertible couch standard.

Lounge chairs and table to replace couch.

Swivel chairs and folding table to replace couch.

Minnie Winnie 20RG



Specifications

MODELS

	Brave 23RG	Brave 26RT	MW 20RG	MW 23RB
Length:	22'11"	25'11"	20'5"	22'11"
Wheelbase:	137"	159"	127"	145"
Int. width:	91"	91"	89½"	89½"
Height:	10'3"	10'3"	111"	111"
Height, int.	6'6 3/8"	6'6 3/8"	80"	80"
GVWR (lbs.):	11,000	12,000	9,000	10,500
V8 engine (cu. in.):	360	360	360	360
Batteries (Amp.):	70	70	70	70
Aux. battery (Amp.):	105	105	105	105
Fuel capacity (gal.):	45	45	35	35
LPG tanks (lbs.):	42	42	42	42

MODELS

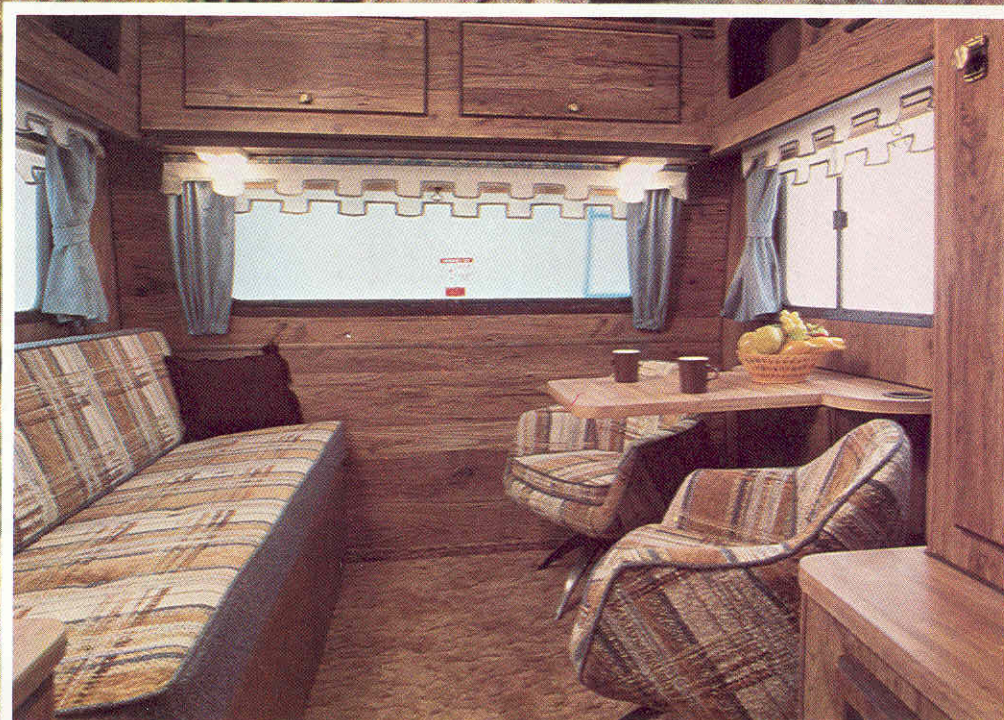
	Brave 23RG	Brave 26RT	MW 20RG	MW 23RB
Fresh water capacity (gal.):	45	45	32	32
Sleeping capacity				
Std.	4	4	5	5
Opt.	6	6	5	5
Refrigerator (cu. ft.)	6	6	6	6
Water heater (gal.)	6	6	6	6
Furnace (BTU)	19,000	19,000	19,000	19,000
Holding tank capacity (gal.)				
Main	24.5	24.5	16	21
Aux.	18.5	18.5	23	8

A large, layered red rock formation, possibly a butte or mesa, dominates the center of the image. The rock shows distinct horizontal strata. At the very top is a flat, rectangular rock slab. The sky is a clear, pale blue. In the bottom right corner, the front of a white train with red stripes is visible. A small person is standing at the base of the rock formation in the lower center.

We've
got a plan
for you.



Convertible couch is standard on the Brave 23RG. Notice the generous overhead cabinetry on the sides and in the back.



A side couch, two swivel chairs, and a folding table are optional to replace the standard twin bed arrangement in the Brave 26RT.



There are a lot of reasons why you'll sleep better in a Winnebago



Interior space in the Minnie Winnie 20RG is surprising for a motor home of this size.



Swivel chairs and a folding table are an optional choice to replace the standard couch on the Minnie Winnie 23RB.

Additional Standard Features

Driver's compartment ■ Two wall mounted ashtrays (Brave); ashtray (Minnie Winnie)

■ Cigarette lighter ■ Inside rearview mirror ■ AM radio with clock and four 10-oz. speakers (Brave); same without clock (Minnie Winnie) ■ Window screens (Brave) ■ Two sunvisors (Minnie Winnie).

Chassis: ■ Painted bumpers (Brave); chrome front bumper with rear painted bumper incorporating sewer hose storage (Minnie Winnie) ■ RV thumpless tires ■ Spare wheel and carrier ■ Jack and tools.

Appliances: ■ Forced air furnace with decorative grille ■ Four burner range with fashionable black oven ■ Three-way gas/electric refrigerator ■ Non-power bath vent ■ Non-power stove vent.

Bath: ■ Carpeting (except MW20RG) ■ Color coordinated lavatory, shower-tub combination, and marine toilet ■ Lighted mirror (Brave) ■ Mirror (Minnie Winnie) ■ Shower curtain and track ■ Flexible head shower ■ Solid bath door ■ Tissue holder ■ Towel bar/door stiffener.

Kitchen: ■ Double stainless steel sink with cover ■ Brick backsplash ■ Galley extension (MW 20RG) ■ Trash container or allotted space (MW 20RG).

Sleeping and Lounging: Brave ■ Rear cabinet bunk with mattress ■ Dinette that converts to bed located mid right side ■ Rear convertible couch with side bolsters and hampers (23RG) ■ Rear twin beds with bolsters and nightstand (26RT).

Minnie Winnie ■ Full-size front overhead fold-out bunk and hampers ■ Dinette that converts to bed ■ Rear pull-out bed (20RG) Couch that converts to bed at front right side (23RB).

Convenience: ■ Inside assist straps ■ Mirror wall in dinette (Brave) ■ Screen door ■ Sprung overhead door hinges and positive cabinet latches ■ Front bunk curtain (Minnie Winnie).

Exterior: ■ Lockable water and gas fills ■ Two rearview mirrors ■ Sewer hose and storage ■ 2" sidewall construction ■ Tinted windows ■ Retractable entrance step ■ Steel reinforced floor (Minnie Winnie).

Electrical: ■ Deep cycle battery ■ Battery charger-converter.

Utility and Safety: ■ Demand water system ■ Permanent frame-mounted LPG system with gauge and leak sensor ■ Fire extinguisher (2 B.C.).

WINNEBAGO®

Winnebago Industries, Inc.

P.O. Box 152 Forest City, Iowa 50436

Brave and Minnie Winnie options for the plan of your choice.

	Models			
	Brave 23RG	Brave 26RT	MW 20RG	MW 23RB
Automotive air cond.	O	O	O	O
440 V8 engine	O	O	NA	O
Cruise control (440 only)	O	O	NA	O
Armrests, headrests	O	O	O	O
Battery voltage & vacuum gauges	O	O	O	O
AM/FM multiplex radio with 8-Track	O	O	O	O
40-channel CB radio with antenna	O	O	O	O
Double co-pilot seat	O	O	NA	NA
Headrest for double co-pilot seat	O	O	NA	NA
Two sunvisors	O	O	S	S
California emissions	O	O	O	O
Spare tire & cover	O	O	O	O
Class I trailer hitch	O	O	O	O
Wheel covers	O	O	NA	NA
Beverage tray	O	O	O	O
Bath & galley package (Includes medicine cabinet, power bath & stove vents)	O	O	O	S
22,000 BTU forced air furnace with electronic ignition	O	O	O	O
28,000 BTU forced air furnace with electronic ignition	O	O	O	O
8 cu. ft. 3-way gas/elec. refrigerator with double door	O	O	NA	O
Front pull-down bunk with privacy curtain	O	O	NA	NA
Black-out curtain	O	O	O	O
Room divider curtain	O	O	NA	NA
Luggage rack & ladder	O	O	O	O
TV antenna with jack	O	O	O	O
11,000 BTU roof air cond.	O	O	O	O
13,500 BTU roof air cond.	O	O	NA	NA
Second 105 Amp deep cycle battery	O	O	NA	NA
Generator prep kit (Includes louvered door, steel tray, insulation, wiring & gas line)	O	O	O	O
3,000 watt generator with hourmeter	NA	NA	O*	O
4,000 watt generator with hourmeter	O	O	NA	NA
Roof air heating element (with 13,500 BTU only)	O	O	NA	NA
Monitor panel for holding tank & water tank levels	O	O	O	O
83 lb. permanent frame-mounted LPG system	O	O	NA	O
Heavy Duty 10,200 GVWR Chassis	NA	NA	O	NA
Vinyl Floor Covering	O	O	O	O

O—Optional S—Standard NA—Not Available

Winnebago's continuing program of product improvement makes specifications, equipment, model availability and prices subject to change without notice. Some items shown may be extra cost options.

*Optional on Heavy Duty Chassis only.