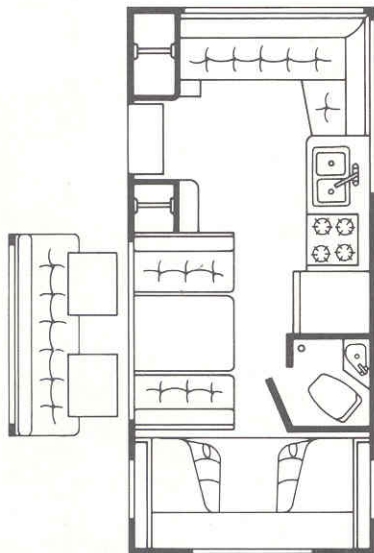


Sundancer optional floor plan arrangements.

Design your own
interior with Itasca's
modular system.

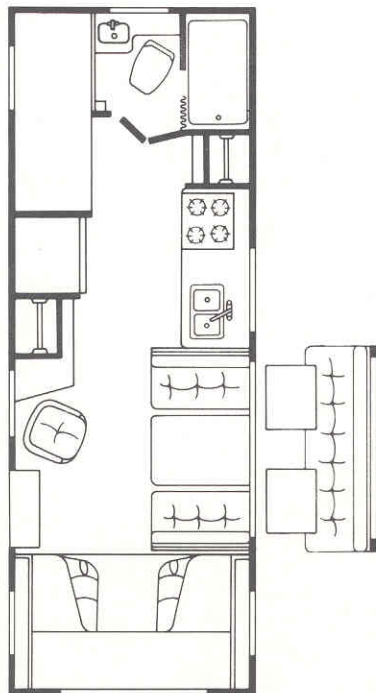
Itasca Sundancer 20RG

Convertible couch with
pedestal table replaces the
dinette.



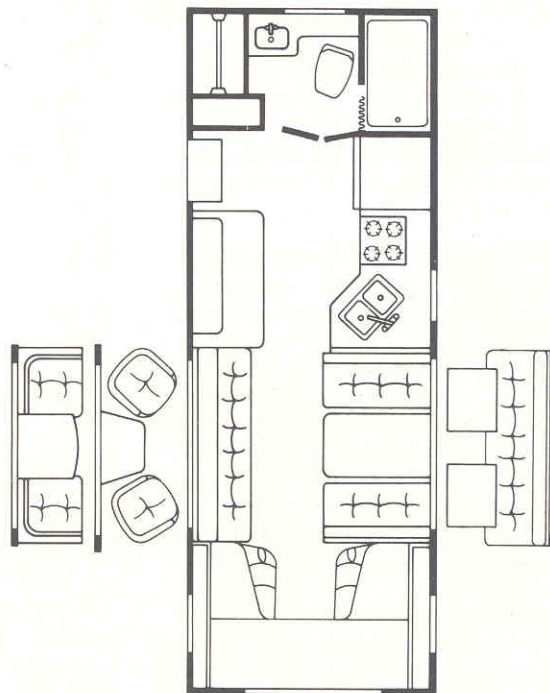
Itasca Sundancer 24RH

Convertible couch with
pedestal table replaces the
dinette.



Itasca Sundancer 25RB

Sprung couch replaces dinette.
Lounge chairs and table replace couch.
Swivel chairs and folding table replace couch.



Itasca®

A Division of
Winnebago Industries, Inc.

P.O. Box 555
Forest City, Iowa 50436
Telephone (515) 582-2636



Itasca SundancerTM Specifications

What we build in

Below are Sundancer's standard features.

Driver's Compartment: Ashtray and cigarette lighter • Inside rearview mirror • Beverage tray • AM radio with four 10-oz. speakers • Window screens • Two sunvisors • Tilt steering wheel (except 20 RG)

Chassis: Chrome front bumper • 50 Amp battery • Six RV thumpless tires • Spare wheel and carrier • Jack and tools • Two mudflaps

Appliances: Forced air furnace with decorative grill • Four burner range with oven • Three-way gas/electric refrigerator • Water heater

Bath: Color coordinated lavatory, shower-tub combination, and marine toilet • Shower curtain and track • Flexible head shower • Mirror • Solid bath door • Tissue holder • Towel bar

Kitchen: Double stainless steel sink with covers • Silverware tray drawer

Sleeping and Lounging:

20 RG Rear gauchio • Dinette converts to bed • Front overhead bunk

24 RH Rear bunks • Front overhead bunk • Dinette converts to bed

25 RB Convertible couch • Dinette converts to bed • Front overhead bunk

Convenience: Screen door • Sprung overhead door hinges and positive cabinet latches • Tinted windows

Exterior: Lockable water fill • Sewer hose and storage • Sidewall construction—2" with interior steel framework • Retractable entrance step with non-slip surface • Lighted assist handle • Color coordinated stripes

Electrical: Deep cycle battery • Battery charger-converter

Utility and Safety: Demand water system • Permanent mount LPG system with gauge • Fire extinguisher (2 B.C.)

What you add on

Increase your motor home pleasure with these options.

	MODELS		
	20 RG	24 RH	25 RB
Automotive air cond.	O	O	O
Cruise control	O	O	O
AM/FM Multiplex radio with 8-Track	O	O	O
40-Channel CB radio with antenna	O	O	O
California emissions	O	O	O
400 V-8 engine	O	NA	NA
Spare tire & cover	O	O	O
Class 1 trailer hitch	O	O	O
Radial tires	NA	O	O
Front wrap-around curtain	O	O	S
Room divider curtain	NA	O	NA
Luggage rack & ladder	O	O	O
TV antenna with jack	O	O	O
11,000 BTU roof air cond.	O	O	O
13,500 BTU roof air cond.	NA	O	O
Second 105 amp deep cycle battery	O	O	O
Generator prep. kit: Includes louvered door, steel floor, insulation, wiring & gas line	O	O	O
3,000 watt generator & Hourmeter	O	NA	NA
4,000 watt generator & Hourmeter	NA	O	O
Roof air heating element (comes with 13,500 BTU roof air only)	NA	O	O
Monitor panel for holding & water tanks	O	O	S
Microwave oven	O	O	O

O—Optional this model

S—Standard this model, no extra cost

NA—Not available this model

SPECIFICATIONS	MODELS		
	20 RG	24 RH	25 RB
Length	20'8"	24'	24'6½"
Wheelbase	125"	157"	157"
Interior Width	91"	91"	89.5"
Height	111"	111"	110"
Height, interior	80"	80"	77"
GVWR (lbs.)	10,200	11,000	11,000
V-8 engine (cu. in.)	350	350	350
Batteries (Amp.)	105	105	105
Fuel capacity (Gal.)	33	40	40
LPG tanks (lbs.)	42	42	42
Fresh water capacity (Gal.)	28	50	60
Sleeping capacity			
Standard	5	5	5
Optional	6	6	5
Refrigerator (cu. ft.)	6	6	6
Water heater (Gal.)	6	6	6
Furnace (BTU)	19,000	19,000	22,000
Holding tank capacity (Gal.)			
Main	16	38	32
Aux.	22	24	25

Itasca's continuing program of product improvement makes specifications, equipment, model availability and prices subject to change without notice.

*Certain equipment and specifications may vary on units sold in Canada.
Ask your dealer for specific details.*