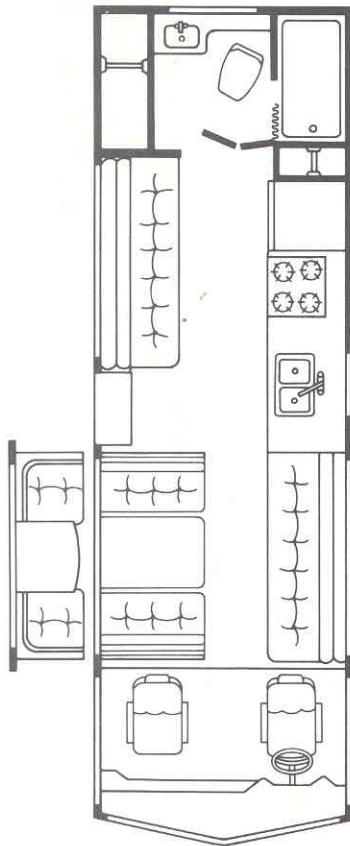


Sunflyer optional floor plan arrangements.

Design your own
interior with Itasca's
modular system.

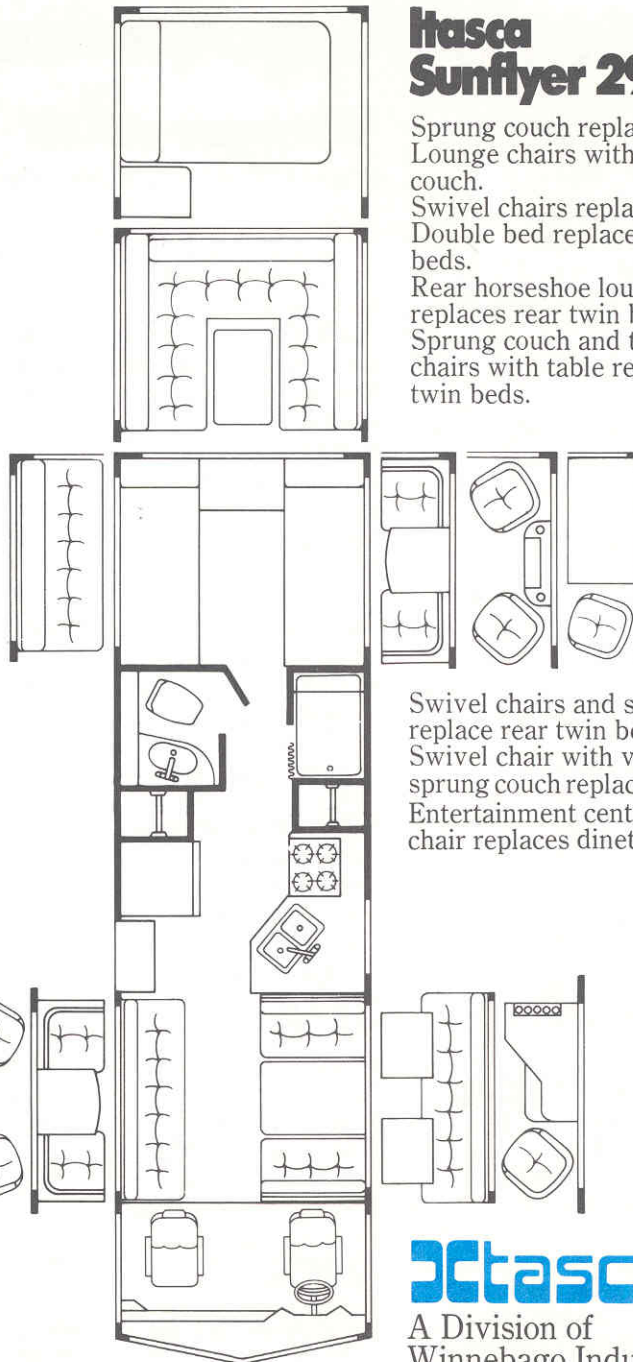
Itasca Sunflyer 26RB

Lounge chairs and table
replace dinette.



Itasca Sunflyer 29RT

Sprung couch replaces dinette.
Lounge chairs with table replace
couch.
Swivel chairs replace couch.
Double bed replaces rear twin
beds.
Rear horseshoe lounge with table
replaces rear twin beds.
Sprung couch and two lounge
chairs with table replace rear
twin beds.



Swivel chairs and sprung couch
replace rear twin beds.
Swivel chair with vanity and
sprung couch replace rear twin beds.
Entertainment center with swivel
chair replaces dinette.

Itasca[®]

A Division of
Winnebago Industries, Inc.

P.O. Box 555
Forest City, Iowa 50436
Telephone (515) 582-2636

SPECIFICATIONS	MODELS	
	26 RB	29 RT
Length	26'4"	29'11"
Wheelbase	158.5"	178"
Interior width	91"	91"
Height	106.6"	107.5"
Height, interior	77.5"	78.5"
GVWR (lbs.)	12,300	14,500
V-8 engine (cu. in.)	454	454
Automotive battery (Amp.)	80	80
Batteries (Amp.)	105	105

	26 RB	29 RT
Fuel capacity (Gal.)	36	40
LPG tanks (lbs.)	83	83
Fresh water capacity (Gal.)	54	70
Sleeping capacity		
Standard	5	5
Optional	7*	6
Refrigerator (cu. ft.)	8	8
Water heater (Gal.)	6	6
Furnace (BTU)	24,000	30,000
Holding tank capacity (Gal.)		
Main	32	32
Aux.	25	25

*weight restricted

Itasca Sunflyer® Specifications

What we build in

Below are Sunflyer's standard features.

Driver's Compartment: Two wall mounted ashtrays • Cigarette lighter • Armrests and headrests • Inside rearview mirror • Beverage tray • AM radio with clock and four 10-oz. speakers • Window screens • Two sunvisors • Tilt steering wheel • Swivel reclining high back seats • Battery voltage and vacuum gauges • Map light

Chassis: Bright bumpers • 80 Amp battery • Six RV thumpless tires • Spare wheel and carrier • Jack and tools • Two rear mudflaps

Appliances: Forced air furnace with electronic ignition and decorative grill • Four burner range and full size oven with black glass door • Three-way gas/electric refrigerator with double door • Power bath vent • Power stove vent

Bath: Carpeting • Color coordinated lavatory, shower-tub combination, and marine toilet • Deluxe lighted medicine cabinet • Shower curtain and track • Flexible head shower • Solid bath door • Tissue holder • Towel bar door stiffener

Kitchen: Double stainless steel sink with covers

Sleeping and Lounging:

26RB Dinette converts to bed

• Two sprung couches

29RT Rear twin beds with nightstand • Sprung couch • Dinette converts to bed

Convenience: Inside assist strap • Screen door • Sprung overhead door hinges and positive cabinet latches • Room divider curtains • Floorline lighting

Exterior: Lockable water and gas fills • Two rearview mirrors • Sewer hose and storage • Sidewall construction: 26RB has 2" steel-in-wall construction; 29RT has 2" steel cage construction • Tinted windows • Retractable entrance step with non-slip surface • Lighted assist handle

Electrical: Deep cycle battery • Battery charger-converter • Pull-out battery tray

Utility and Safety: Demand water system • Permanent mount LPG system with gauge and leak tester • Fire extinguisher (2 B.C.)

What you add on

Increase your motor home pleasure with these options.

	MODELS	
	26 RB	29 RT
Automotive air cond.	0	0
Cruise control	0	0
AM/FM Multiplex radio with 8-Track	0	0
40-Channel CB radio with antenna	0	0
Highback double co-pilot seat with armrests	0	0
California emissions	0	0
Spare tire & cover	0	0
Class 1 trailer hitch	0	0
Radial tires	0	0
Luggage rack & ladder	0	0
TV antenna with jack	0	0
11,000 BTU roof air cond.	0	0
Second 11,000 BTU roof air cond.	NA	0
13,500 BTU roof air cond.	0	0
Second 13,500 BTU roof air cond.	NA	0
Second 105 amp deep cycle battery	0	0
Two 90 amp maintenance free batteries	0	0
Generator prep. kit: Includes louvered door, steel floor, insulation, wiring & gas line	0	0
4,000 watt generator & Hourmeter	0	0
5,000 watt generator & Hourmeter	0	0
6,500 watt generator & Hourmeter	0	0
Roof air heating element (comes with 13,500 BTU roof air only)	0	0
Deluxe monitor panel	0	0
Microwave oven	0	0
30,000 BTU furnace with electric ignition	0	S
34,000 BTU furnace with electric ignition	NA	0
Auxiliary rear auto heater & motoraid water heater package	0	0
Auxiliary fuel tank	0	0
Front pull down bunk with curtain	0	0
Front wrap-around curtain	0	0
Room divider curtain	0	NA
Winnebago storage box	0	0

O—Optional this model

S—Standard this model, no extra cost

NA—Not available this model

Itasca's continuing program of product improvement makes specifications, equipment, model availability and prices subject to change without notice.

Certain equipment and specifications may vary on units sold in Canada. Ask your dealer for specific details.